



GLOBAL CHART OUTLOOK

13th August 2019
Global Equities

Swiss SPI 200 constituent stocks – listed according to the Score (range from 100% to 0%, 40%-60% is neutral)

100%	WARTECK N	WARN.S
100%	SWISS PRIME SITE	SPSN.S
100%	BVZ HOLDING AG	BVZN.S
100%	ALLREAL HLD N	ALLN.S
100%	PERFECT HOLDING	PRFN.S
100%	ZURICH INSURANCE	ZURN.S
100%	MOBIMO HLDG	MOBN.S
100%	PSP CH PRPTY N	PSPN.S
100%	VAUDOISE VERS N	VAHN.S
100%	EDISUN POWER	ESUN.S
100%	BELLEVUE GRP N	BBN.S
100%	SWISS FIN&PROP	SFPN.S
100%	NESTLE SA	NESN.S
100%	MCH GROUP AG	MCHN.S
100%	ZUG ESTATE HLD	ZUGN.S
100%	GLARNER KB N	GLKBN.S
100%	THURGAUER KB PS	TKBP.S
100%	HIAG IMMOBILIEN	HIAG.S
100%	INTERSHOP N	ISN.S
100%	INVESTIS N	IREN.S
100%	GALENICA	GALE.S
100%	VIFOR PHARMA	VIFN.S
100%	LASTMINUTE ORD	LMN.S
94%	VALORA N	VALN.S
94%	LINDT & SP PS	LISP.S
94%	BALOISE HLD N	BALN.S
94%	JUNGFRAUBAHN N	JFN.S
94%	BFW LIEGENSCH N	BLIN.S
94%	SCHINDLER PS	SCHP.S
94%	SCHINDLER N	SCHN.S
89%	CPH CHEM&PAPER	CPHN.S
89%	ARUNDEL AG	ARONL.S
89%	GURIT I	GUR.S
89%	SWISSQUOTE GRP N	SQN.S
89%	ROCHE HOLDING AG	ROG.S
89%	APG SGA	APGN.S
89%	ZEHNDER I	ZEHN.S
83%	VILLARS N	VILN.S
83%	TECAN HLD N	TECN.S
83%	BACHEM HOLD N	BANB.S
83%	LONZA GRP AG N	LONN.S
83%	PARTNERS GROUPAG	PGHN.S
83%	SIG COMB GRP N	SIGNC.S
83%	SWISS RE N	SRENH.S
83%	PLAZZA AG	PLANZ.S
83%	LANDIS GYR	LANDI.S
78%	GR KTBK PS	GRKP.S
78%	CHAM GROUP AG	CHAMA.S
78%	SPICE PRIV AG	SPCE.S
78%	BASILEA PHARMA	BSLN.S
78%	SUNRISE N	SRCG.S
78%	WALLISER KTBK	WKB.S
72%	LINDT & SP N	LISN.S

72%	INFICON N	IFCN.S
72%	SONOVA H AG	SOON.S
72%	PEACH PROP	PEAN.S
72%	BURKHALTER AG	BRKN.S
67%	AIRESES SA	AIRE.S
67%	AEVIS HOLDING SA	AEVS.S
67%	GRP MINOTERIES	GMI.S
67%	ZUEBLIN N	ZUBN.S
67%	FLUGHAFEN ZURICH	FHZN.S
67%	IDORSIA N	IDIA.S
61%	CIE FIN TR I	CFT.S
61%	ORIOR N	ORON.S
56%	BK LINTH LLB AG	LINN.S
56%	PERROT DUVAL I	PEDU.S
56%	SENSIRION N	SENSI.S
50%	AMS	AMS.S
50%	SWISSCOM N	SCMN.S
50%	BARRY CALLEBAUT	BARN.S
50%	SIEGFRIED N	SFZN.S
50%	ALSO HLD AG	ALS.N
50%	ROMANDE ENERGIE	HREN.S
50%	ORASCOM DEV H	ODHN.S
50%	CEMBRA MONEY BAN	CMBN.S
44%	ZUGER KB I	ZG.S
44%	YPSOMED HOLDING	YPSN.S
39%	KUEHNE & NAGEL	KNIN.S
33%	NOVARTIS N	NOVN.S
33%	EVOLVA HOLD AG	EVE.S
33%	CALIDA HLD N	CALN.S
33%	IVF HARTMANN	VBSN.S
33%	BLACKSTONE RES	BLS.S
33%	WISEKEY N	WIHN.S
28%	O FUSSLI N	OFN.S
28%	VETROPACK I	VET.S
28%	SCHWEITER I	SWTQ.S
28%	DORMAKABA HOLD	DOKA.S
28%	DAETWYL I	DAE.S
28%	MEYER BURGER N	MBTN.S
28%	POENINA	PNHO.S
28%	MEIER TOBLER GRO	METG.S
28%	VARIA US PROP	VARN.S
28%	CEVA LOGISTICS N	CEVAL.S
28%	KLINGELNBERG N	KLIN.S
22%	PANALPINA WELT	PWTN.S
22%	ELMA N	ELMN.S
22%	TAMEDIA N	TAMN.S
22%	HELVETIA HLDG	HELN.S
22%	VALIANT N	VATN.S
22%	SWISS LIFE HLDG	SLHN.S
22%	EMS-CHEMIE N	EMSN.S
22%	SANTHERA PHARMA	SANN.S
22%	GEBERIT N1	GEBN.S
22%	LECLANCHE N	LECN.S

22%	RICHEMONT N	CFR.S
22%	BQ CANT DU JURA	BCJ.S
22%	VP BANK AG	VPBN.S
17%	PHOENIX I	PM.S
17%	CICOR TECH	CICN.S
17%	ADVAL TECH N	ADV.N
17%	BASLER KTBK PS	BSKP.S
17%	GIVAUDAN N	GIVN.S
17%	ST GALLER KB N	SGKN.S
17%	LUZERNER KB N	LUKN.S
17%	CLARIANT N	CLN.S
17%	SWATCH GROUP N	UHRN.S
17%	SWATCH GROUP I	UHR.S
17%	BCV N	BCVN.S
17%	DUFREY AG	DUFN.S
17%	IMPLENIA N	IMPLN.S
17%	METALL ZUG	METN.S
17%	ZUR ROSE GROUP N	ROSEG.S
17%	ARYZTA AG	ARYN.S
17%	TITL BN BERG N	TIBN.S
17%	CONZZETA HLDNG I	CONC.S
17%	KUROS BIOSCIENCE	KURN.S
17%	OBSEVA SA/d	OBSV.O
17%	BC GENEVE P	BCGE.S
17%	MEDACTA GROUP	MOVE.S
17%	NEWRON PHARMA N	NWRN.S
17%	LIECH LANDBK	LLBN.S
11%	BELIMO HOLDING N	BEAN.S
11%	CI COM SA I	CIE.S
11%	FISCHER N	FIN.S
11%	SCHLATTER N	STRN.S
11%	BUCHER N	BUCN.S
11%	RIETER N	RIEN.S
11%	SCHMOLZ+BICKENB	STLN.S
11%	PRIVATE EQUITY N	PEHN.S
11%	GAVAZZI CARLO I	GAV.S
11%	CREALOGIX HLDG	CLXN.S
11%	CS GROUP AG	CSGN.S
11%	ADECCO N	ADE.N
11%	LAFARGEHOLCIM	LHN.S
11%	ABB LTD N	ABBN.S
11%	KUDELSKI	KUD.S
11%	TEMENOS N	TEMN.S
11%	EMMI N	EMMN.S
11%	EFG INT N	EFGN.S
11%	LEM HOLDING N	LEHN.S
11%	U-BLOX N	UBXN.S
11%	RELIEF THERAPEUT	RLFB.S
11%	JULIUS BAER N	BAER.S
11%	GAM N	GAMH.S
11%	ARBONIA AG	ARBNO.S
11%	ALCON N	ALCC.S
11%	MOBILEZONE HLD I	MOZN.S

11%	VAT GROUP N	VACN.S
11%	COMET HOLDING	COTNE.S
11%	ASMALL WORLD N	ASWN.S
6%	MIKRON N	MIKN.S
6%	SCHAFFNER N	SAHN.S
6%	TORNOS HOLDING N	TOHN.S
6%	STRAUMANN HLD N	STMN.S
6%	VONTOBEL N	VONN.S
6%	BOBST GRP N	BOBNN.S
6%	BB BIOTECH ORD	BION.S
6%	HOCHDORF N	HOCN.S
6%	LALIQUE	LLQ.S
6%	POLYPHOR N	POLN.S
6%	DKSH N	DKSH.S
6%	BKW N	BKWB.S
6%	MOLECULAR PARTNE	MOLN.S
6%	SIKA	SIKA.S
6%	COSMO PHARM N	COPN.S
0%	KTM INDUSTRIES/d	KTMI.VI
0%	OC OERLIKON CORP	OERL.S
0%	SNB N	SNBN.S
0%	HYPO BK LENZB N	HBLN.S
0%	BASELAND KTBK	BLKB.S
0%	STARRAG N	STGN.S
0%	STADLER RAIL	SRAIL.S
0%	SGS N	SGSN.S
0%	ZWAHLEN & MAYR	ZWM.S
0%	VON ROLL I	ROL.S
0%	FORBO N	FORN.S
0%	HIGHL EVNT & ENT	HLEE.S
0%	INTERROLL N	INRN.S
0%	FEINTOOL N	FTON.S
0%	BERNER KB N	BEKN.S
0%	KOMAX N	KOMN.S
0%	ASCAM N	ASCN.S
0%	PARGESA I	PARG.S
0%	COLTENE N	CLTN.S
0%	BURCKHARDT	BCHN.S
0%	LOGITECH	LOGN.S
0%	VZ HOLDING N	VZN.S
0%	HUBER & S N	HUBN.S
0%	SULZER N	SUN.S
0%	KARDEX I	KARN.S
0%	AUTONEUM N	AUTON.S
0%	LEONTEQ	LEON.S
0%	BOSSARD N	BOS.S
0%	SFS GROUP	SFSN.S
0%	UBS GROUP N	UBSG.S
0%	BELL FOOD GROUP	BELL.S
0%	VALARTIS GROUP	VLRT.S
0%	MEDARTIS	MEDA.S
0%	CASSIOPEA N	SKIN.S

Swiss Market Index 20 constituent stocks

SCORE	COMPANY	RIC	PRICE	LT	MT	ST	COMMENT	DATE BOUGHT	PRICE BOUGHT	PROFIT or LOSS
11%	ABB LTD N	ABBN.S	18.07	uo	-	-	Turning down from major resistance at 18.30.			
11%	ADECCO N	ADEN.S	52.10	o	-	-				
11%	ALCON N	ALCC.S	57.91	na	-	uu+				
11%	CS GROUP AG	CSGN.S	11.05	o	-	-	see chart			
22%	GEBERIT N1	GEBN.S	436.40	do	-	-	Must rise above 435.50 and 438 to trigger a short-term buy signals.			
17%	GIVAUDAN N	GIVN.S	2'597.00	uo	-	uo				
11%	LAFARGEHOLCIM	LHN.S	46.63	o	-	-	Supports are 45.50 / 45 and 43.			
83%	LONZA GRP AG N	LONN.S	347.00	+	uu+	uu+	Hold.	11.06.2019	329.50	5.31%
100%	NESTLE SA	NESN.S	106.40	+	+	uu+	see chart			
33%	NOVARTIS N	NOVN.S	88.96	+	-	-	see chart	24.05.2019	85.55	3.99%
22%	RICHEMONT N	CFR.S	76.48	+	-	-	Major supports are 75.50 and 70.50.			
89%	ROCHE HOLDING AG	ROG.S	272.20	uu+	uu+	u+	see chart	24.05.2019	272.10	0.04%
0%	SGS N	SGSN.S	2'400.00	-	-	-				
6%	SIKA	SIKA.S	139.35	-	-	uo				
22%	SWISS LIFE HLDG	SLHN.S	466.50	do	-	-				
83%	SWISS RE N	SRENH.S	97.50	u+	uu+	u+	Remains in the large triangle from April with resistance at 98.50 and 101.			
50%	SWISSCOM N	SCMN.S	482.10	u+	-	uu+				
17%	SWATCH GROUP I	UHR.S	269.10	-	uo	-	Take the minor profit of 4.2%. A break of 264 would signal 255 or lower.	18.06.2019	257.80	4.38%
0%	UBS GROUP N	UBSG.S	10.37	-	-	-	Remains in the downtrend unless 10.50 is recovered.			
100%	ZURICH INSURANCE	ZURN.S	350.00	+	uu+	uu+	see chart			

Swiss Performance Index 200 stocks – listed alphabetically (A-Co)

SCORE	COMPANY	RIC	PRICE	LT	MT	ST	COMMENT	DATE BOUGHT	PRICE BOUGHT	PROFIT or LOSS
11%	ABB LTD N	ABBN.S	18.07	uo	-	-	Turning down from major resistance at 18.30.			
11%	ADECCO N	ADEN.S	52.10	o	-	-				
17%	ADVAL TECH N	ADVN.S	166.00	-	-	uu+				
67%	AEVIS HOLDING SA	AEVS.S	12.60	+	uo	+				
67%	AIREIS SA	AIRE.S	1.23	-	+	+				
11%	ALCON N	ALCC.S	57.91	na	-	uu+				
100%	ALLREAL HLD N	ALLN.S	179.60	+	+	uu+	Hold.	02.07.2019	169.80	5.77%
50%	ALSO HLD AG	ALSN.S	140.00	+	do	dd-				
50%	AMS	AMS.S	41.57	+	do	d-				
89%	APG SGA	APGN.S	272.00	uu+	+	+				
11%	ARBONIA AG	ARBNO.S	10.98	o	-	d-				
89%	ARUNDEL AG	ARONL.S	2.16	u+	uu+	uu+				
17%	ARYZTA AG	ARYN.S	0.77	o	-	o				
0%	ASCOM N	ASCN.S	10.04	-	-	-				
11%	ASMALLWORLD N	ASWN.S	2.07	o	dd-	dd-				
0%	AUTONEUM N	AUTON.S	100.40	-	-	d-				
83%	BACHEM HOLD N	BANB.S	135.40	+	uu+	uu+				
94%	BALOISE HLD N	BALN.S	179.80	+	u+	uu+				
50%	BARRY CALLEBAUT	BARN.S	1'960.00	+	-	uu+				
0%	BASELLAND KTBK	BLKB.S	906.00	-	dd-	dd-				
78%	BASILEA PHARMA	BSLN.S	37.16	uo	u+	uu+				
17%	BASLER KTBK PS	BSKP.S	71.60	-	o	-				
6%	BB BIOTECH ORD	BION.S	61.75	-	-	uo				
17%	BC GENEVE P	BCGE.S	198.00	dd-	do	dd-				
17%	BCV N	BCVN.S	726.00	-	uo	d-				
11%	BELIMO HOLDING N	BEAN.S	5'010.00	do	-	-				
0%	BELL FOOD GROUP	BELL.S	262.50	-	-	-				
100%	BELLEVUE GRP N	BBN.S	21.40	+	+	uu+				
0%	BERNER KB N	BEKN.S	225.00	-	-	dd-				
94%	BFW LIEGENSCH N	BLIN.S	43.80	+	+	+				
56%	BK LINTH LLB AG	LINN.S	478.00	do	do	+				
6%	BKW N	BKWB.S	64.10	-	-	uo				
33%	BLACKSTONE RES	BLS.S	1.10	uo	o	do				
6%	BOBST GRP N	BOBNN.S	47.86	-	-	o				
0%	BOSSARD N	BOS.S	132.70	-	-	dd-				
22%	BQ CANT DU JURA	BCJ.S	56.00	do	d-	d-				
11%	BUCHER N	BUCN.S	280.80	o	-	-				
0%	BURCKHARDT	BCHN.S	236.00	-	-	dd-				
72%	BURKHALTER AG	BRKN.S	76.80	u+	uu+	u+	Sell signal if 73 is broken.	30.07.2019	73.80	4.07%
100%	BVZ HOLDING AG	BVZN.S	935.00	u+	uu+	u+				
33%	CALIDA HLD N	CALN.S	27.90	-	o	+				
0%	CASSIOPEA N	SKIN.S	39.60	d-	-	-				
50%	CEMBRA MONEY BAN	CMBN.S	94.35	+	do	-				
28%	CEVA LOGISTICS N	CEVAL.S	29.65	o	do	dd-				
78%	CHAM GROUP AG	CHAMA.S	431.00	+	+	+				
11%	CI COM SA I	CIE.S	2.34	o	-	-				
17%	CICOR TECH	CICN.S	47.50	o	-	uo				
61%	CIE FIN TR I	CFT.S	102.00	uo	uu+	uu+				
17%	CLARIANT N	CLN.S	17.56	-	uo	-				
0%	COLTENE N	CLTN.S	79.60	-	-	-				
11%	COMET HOLDING	COTNE.S	89.00	o	-	-				
17%	CONZZETA HLDNG I	CONC.S	784.00	-	-	u+	BUY signals if the resistances at 790 / 810 are broken.			
6%	COSMO PHARM N	COPN.S	82.80	-	-	o				

SPI Index 200 constituent stocks - alphabetically (Co-La)

SCORE	COMPANY	RIC	PRICE	LT	MT	ST	COMMENT	DATE BOUGHT	PRICE BOUGHT	PROFIT or LOSS
89%	CPH CHEM&PAPER	CPHN.S	84.20	uo	uu+	uu+				
11%	CREALOGIX HLDG	CLXN.S	92.20	-	-	uu+				
11%	CS GROUP AG	CSGN.S	11.05	o	-	-	see chart			
28%	DAETWYL I	DAE.S	145.20	o	uo	-				
6%	DKSH N	DKSH.S	48.66	-	-	o				
28%	DORMAKABA HOLD	DOKA.S	701.00	o	uo	-				
17%	DUFREY AG	DUFN.S	82.26	d-	do	-				
100%	EDISUN POWER	ESUN.S	151.00	+	+	+				
11%	EFG INT N	EFGN.S	6.00	o	-	-				
22%	ELMA N	ELMN.S	410.00	+	-	d-				
11%	EMMI N	EMMN.S	831.00	-	-	+				
22%	EMS-CHEMIE N	EMSN.S	613.50	+	-	-				
33%	EVOLVA HOLD AG	EVE.S	0.18	-	uo	u+	Short-term buy signal if o.1820 is broken. Medium-term buy if o.20 is cleared.			
0%	FEINTOOL N	FTON.S	58.40	-	-	d-				
11%	FISCHER N	FIN.S	802.00	o	-	-				
67%	FLUGHAFEN ZURICH	FHZN.S	181.50	+	+	-	Sell the position if the supports at 177 and 174 are broken. Lower support is 167.	11.06.2019	173.30	4.73%
0%	FORBO N	FORN.S	1'446.00	-	-	-				
100%	GALENICA	GALE.S	52.70	+	+	uu+				
11%	GAM N	GAMH.S	3.67	o	-	-				
11%	GAVAZZI CARLO I	GAV.S	260.00	o	-	-	Likely to fall to 238.			
22%	GEBERIT N1	GEBN.S	436.40	do	-	-	Must rise above 435.50 and 438 to trigger a short-term buy signals.			
17%	GIVAUDAN N	GIVN.S	2'597.00	uo	-	uo				
100%	GLARNER KB N	GLKBN.S	31.00	u+	+	+				
78%	GR KTBK PS	GRKP.S	1'455.00	do	+	do				
67%	GRP MINOTERIES	GMI.S	366.00	-	uu+	uu+				
89%	GURIT I	GUR.S	1'070.00	+	+	do				
22%	HELVETIA HLDG	HELN.S	124.20	o	-	-				
100%	HIAG IMMOBILIEN	HIAG.S	134.50	+	+	+				
0%	HIGHL EVNT & ENT	HLEE.S	18.40	-	-	-				
6%	HOCHDORF N	HOCN.S	73.00	-	-	o				
0%	HUBER & S N	HUBN.S	72.70	-	-	-				
0%	HYPO BK LENZB N	HBLN.S	4'480.00	dd-	dd-	dd-				
67%	IDORSIA N	IDIA.S	22.20	+	uo	uu+				
17%	IMPLENIA N	IMP.N.S	27.50	-	-	u+				
72%	INFICON N	IFCN.S	605.50	+	u+	do	Sell the position if 596 is broken. A break of 585 would signal 550.	30.07.2019	610.00	-0.74%
0%	INTERROLL N	INRN.S	1'790.00	-	-	-				
100%	INTERSHOP N	ISN.S	510.00	+	+	+				
100%	INVESTIS N	IREN.S	70.00	+	u+	u+				
33%	IVF HARTMANN	VBSN.S	153.00	do	do	do				
11%	JULIUS BAER N	BAER.S	38.15	o	-	-				
94%	JUNGFRAUBAHN N	JFN.S	148.20	+	+	+				
0%	KARDEX I	KARN.S	138.00	-	-	d-				
28%	KLINGELNBERG N	KLIN.S	33.30	o	-	uu+				
0%	KOMAX N	KOMN.S	170.20	-	-	d-				
0%	KTM INDUSTRIES/d	KTMI.VI	49.60	dd-	dd-	d-				
11%	KUDELSKI	KUD.S	6.30	do	dd-	dd-				
39%	KUEHNE & NAGEL	KNIN.S	139.95	+	do	-				
17%	KUROS BIOSCIENCE	KURN.S	1.56	uo	-	o				
11%	LAFARGEHOLCIM	LHN.S	46.63	o	-	-	Supports are 45.50 / 45 and 43.			
6%	LALIQUE	LLQ.S	39.80	-	-	do				
83%	LANDIS GYR	LANDI.S	81.05	+	u+	u+				
100%	LASTMINUTE ORD	LMN.S	33.50	+	+	+				
22%	LECLANCHE N	LECN.S	1.63	-	uo	uo				

SPI Index 200 constituent stocks - alphabetically (La-Se)

SCORE	COMPANY	RIC	PRICE	LT	MT	ST	COMMENT	DATE BOUGHT	PRICE BOUGHT	PROFIT or LOSS
11%	LEM HOLDING N	LEHN.S	1'268.00	do	dd-	dd-	Sell signal if 1252 is broken.	11.02.2019	1166.00	8.75%
0%	LEONTEQ	LEON.S	31.82	-	dd-	dd-	Sell only if 29.80 is broken. Support is 28.50 and 26.50.	30.07.2019	34.00	-6.41%
17%	LIECH LANDBK	LLBN.S	61.00	-	-	u+				
72%	LINDT & SP N	LISN.S	80'800.00	+	+	-				
94%	LINDT & SP PS	LISP.S	7'400.00	+	+	+				
0%	LOGITECH	LOGN.S	37.90	-	-	-				
83%	LONZA GRP AG N	LONN.S	347.00	+	uu+	uu+	see chart	11.06.2019	329.50	5.31%
17%	LUZERNER KB N	LUKN.S	434.00	-	o	d-				
100%	MCH GROUP AG	MCHN.S	23.00	+	+	uu+				
17%	MEDACTA GROUP	MOVE.S	85.50	-	do	-				
0%	MEDARTIS	MEDA.S	48.60	-	-	-				
28%	MEIER TOBLER GRO	METG.S	15.50	o	do	dd-				
17%	METALL ZUG	METN.S	2'080.00	-	o	dd-				
28%	MEYER BURGER N	MBTN.S	0.43	uo	-	+				
6%	MIKRON N	MIKN.S	7.80	d-	-	o				
11%	MOBILEZONE HLD I	MOZN.S	9.30	-	-	u+				
100%	MOBIMO HLDG	MOBN.S	270.00	+	+	uu+	Hold.	02.07.2019	263.00	2.66%
6%	MOLECULAR PARTNE	MOLN.S	12.86	-	-	uo	Must rise above 13.45 to signal a turnaround.			
100%	NESTLE SA	NESN.S	106.40	+	+	uu+	see chart			
17%	NEWRON PHARMA N	NWRN.S	6.00	-	uo	-				
33%	NOVARTIS N	NOVN.S	88.96	+	-	-	see chart	24.05.2019	85.55	3.99%
28%	O FUSSLI N	OFN.S	90.00	do	do	dd-				
17%	OBSEVA SA/d	OBSV.O	8.97	uo	-	uo				
0%	OC OERLIKON CORP	OERL.S	9.13	-	-	-				
50%	ORASCOM DEV H	ODHN.S	14.80	o	u+	uo	Must hold >14 or the major trend will turn down. Supports at 13.35, 12.60, 12.20 and 10.	11.06.2019	13.96	6.02%
61%	ORIOR N	ORON.S	80.90	+	+	o				
22%	PANALPINA WELT	PWTN.S	210.40	+	-	-				
0%	PARGESA I	PARG.S	69.40	-	-	-				
83%	PARTNERS GROUPAG	PGHN.S	788.40	+	+	-				
72%	PEACH PROP	PEAN.S	32.30	+	u+	uo	Sell the position if 31 is broken. Supports are 30, 29 and 27.80.	27.06.2019	34.10	-5.28%
100%	PERFECT HOLDING	PRFN.S	0.02	u+	uu+	uu+				
56%	PERROT DUVAL I1	PEDU.S	138.00	+	do	do				
17%	PHOENIX I	PM.S	428.00	-	do	dd-				
83%	PLAZZA AG	PLANZ.S	255.00	+	+	+				
28%	POENINA	PNHO.S	45.90	o	uo	-				
6%	POLYPHOR N	POLN.S	4.54	-	-	o				
11%	PRIVATE EQUITY N	PEHN.S	58.00	-	-	uu+				
100%	PSP CH PRPTY N	PSPN.S	124.20	+	+	+	Reaching the long-term resistance at 126 / 130. Downturn if 120 is broken.			
11%	RELIEF THERAPEUT	RLFB.S	0.00	-	-	u+				
22%	RICHEMONT N	CFR.S	76.48	+	-	-	Major supports are 75.50 and 70.50.			
11%	RIETER N	RIEN.S	127.30	o	-	d-				
89%	ROCHE HOLDING AG	ROG.S	272.20	uu+	uu+	u+	see chart	24.05.2019	272.10	0.04%
50%	ROMANDE ENERGIE	HREN.S	1'230.00	+	do	d-	Hold.	10.09.2018	1230.00	0.00%
22%	SANTHERA PHARMA	SANN.S	13.94	+	-	-				
6%	SCHAFFNER N	SAHN.S	207.00	-	-	o				
94%	SCHINDLER N	SCHN.S	221.20	+	+	uu+				
94%	SCHINDLER PS	SCHP.S	224.90	+	+	u+				
11%	SCHLATTER N	STRN.S	39.80	o	d-	-				
11%	SCHMOLZ+BICKENB	STLN.S	0.33	-	-	uu+				
28%	SCHWEITER I	SWTQ.S	930.00	o	do	-				
56%	SENSIRION N	SENSI.S	35.20	-	u+	o				
0%	SFS GROUP	SFSN.S	70.95	-	-	-				
0%	SGS N	SGSN.S	2'400.00	-	-	-				

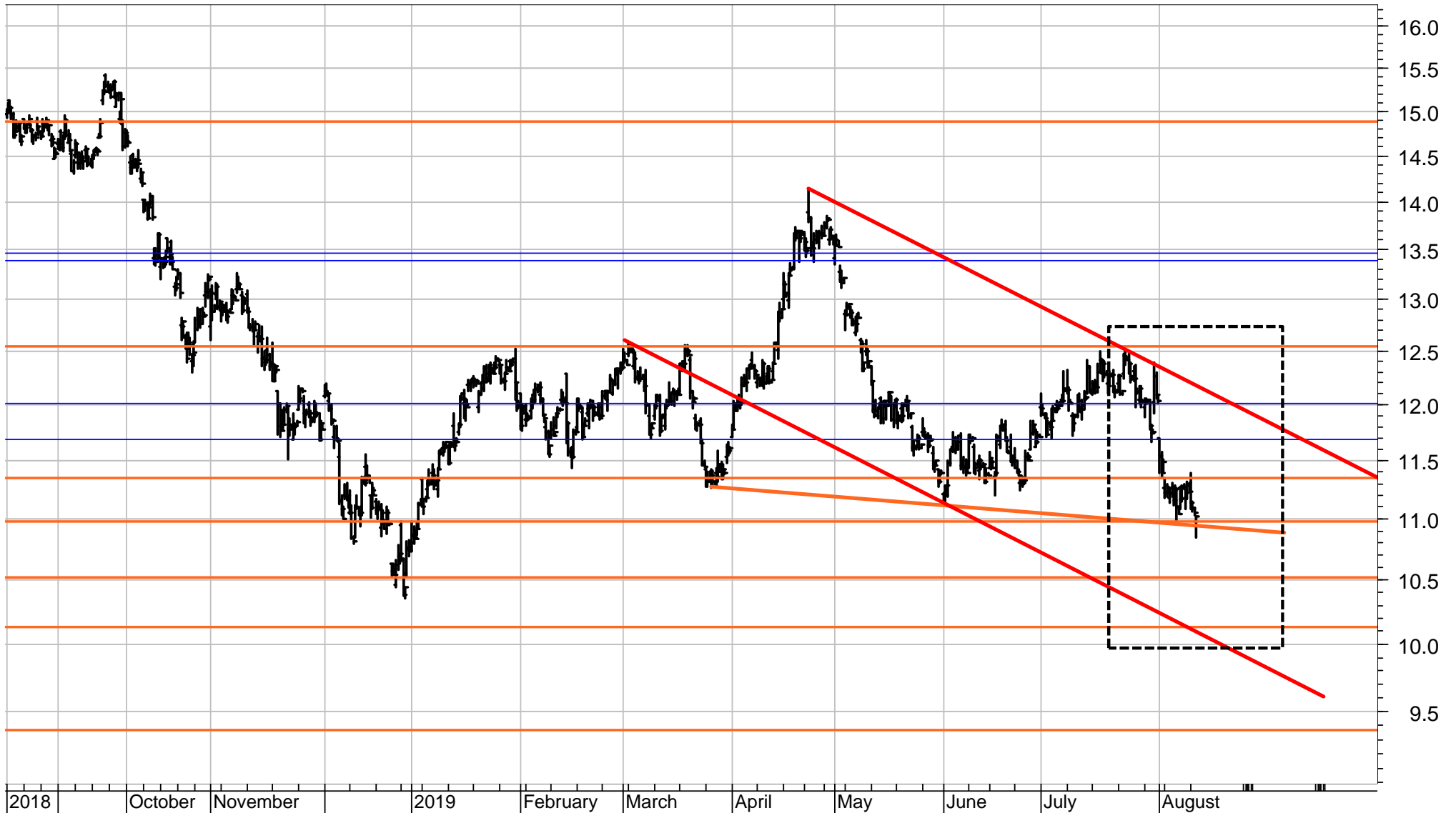
SPI Index 200 constituent stocks - alphabetically (Sf-Z)

SCORE	COMPANY	RIC	PRICE	LT	MT	ST	COMMENT	DATE BOUGHT	PRICE BOUGHT	PROFIT or LOSS
50%	SIEGFRIED N	SFZN.S	359.00	-	+	-				
83%	SIG COMB GRP N	SIGNC.S	12.20	+	+	+	Correction must hold >12.05, 11.90 or a break of 11.60 would signal a new downturn.	24.07.2019	11.20	8.93%
6%	SIKA	SIKA.S	139.35	-	-	uo				
0%	SNB N	SNBN.S	4'825.00	-	-	-				
72%	SONOVA H AG	SOON.S	226.20	+	+	uo				
78%	SPICE PRIV AG	SPCE.S	22.20	+	+	+				
17%	ST GALLER KB N	SGKN.S	423.00	-	o	dd-				
0%	STADLER RAIL	SRAIL.S	43.10	na	-	-	Broke 43.70 and is falling to 41.70.			
0%	STARRAG N	STGN.S	45.60	d-	-	d-				
6%	STRAUMANN HLD N	STMN.S	792.80	-	-	uo				
0%	SULZER N	SUN.S	91.45	-	-	-				
78%	SUNRISE N	SRCG.S	73.65	u+	+	do	Likely to have peaked around 75. Watching for a short-term correction.			
17%	SWATCH GROUP I	UHR.S	269.10	-	uo	-	Take the minor profit of 4.2%. A break of 264 would signal 255 or lower.	18.06.2019	257.80	4.38%
17%	SWATCH GROUP N	UHRN.S	50.10	-	uo	-				
100%	SWISS FIN&PROP	SFPN.S	94.50	+	+	+				
22%	SWISS LIFE HLDG	SLHN.S	466.50	do	-	-				
100%	SWISS PRIME SITE	SPSN.S	93.85	+	+	uu+	Reaching the long-term resistance at 96 / 101. Downturn if 90 is broken.	09.01.2019	82.20	14.17%
83%	SWISS RE N	SRENH.S	97.50	u+	uu+	u+	Remains in the large triangle from April with resistance at 98.50 and 101.			
50%	SWISSCOM N	SCMN.S	482.10	u+	-	uu+				
89%	SWISSQUOTE GRP N	SQN.S	43.66	uu+	u+	uu+	Must rise above 46 / 47.50 to signal a major upturn.			
22%	TAMEDIA N	TAMN.S	107.00	+	-	-				
83%	TECAN HLD N	TECN.S	254.00	+	uu+	uu+				
11%	TEMENOS N	TEMN.S	164.00	o	-	-				
100%	THURGAUER KB PS	TKBP.S	108.50	+	+	+				
17%	TITL BN BERG N	TIBN.S	328.00	-	uo	-				
6%	TORNOS HOLDING N	TOHN.S	7.75	-	-	o				
11%	U-BLOX N	UBXN.S	71.15	o	d-	-	Must hold above 71 or the long-term downtrend is likely to resume.			
0%	UBS GROUP N	UBSG.S	10.37	-	-	-	Remains in the downtrend unless 10.50 is recovered.			
0%	VALARTIS GROUP	VLRT.S	10.10	-	-	-				
22%	VALIANT N	VATN.S	102.40	-	uo	uo				
94%	VALORA N	VALN.S	274.50	+	+	+	Sell signal if 268 is broken. Could retrace to 262 or 253.	03.05.2019	267.15	2.75%
28%	VARIA US PROP	VARN.S	36.30	o	do	dd-				
11%	VAT GROUP N	VACN.S	112.00	do	-	-				
100%	VAUDOISE VERS N	VAHN.S	510.00	+	+	uu+				
28%	VETROPACK I	VET.S	2'045.00	-	o	+				
100%	VIFOR PHARMA	VIFN.S	157.05	+	uu+	uu+	Hold.	11.06.2019	143.10	9.75%
83%	VILLARS N	VILN.S	800.00	u+	+	+				
0%	VON ROLL I	ROL.S	0.98	-	-	-				
6%	VONTOBEL N	VONN.S	51.30	-	-	uo	Falling to long-term support at 51 / 50.50. If broken, expect to see 47.			
22%	VP BANK AG	VPBN.S	154.00	+	dd-	-				
0%	VZ HOLDING N	VZN.S	297.00	-	-	-				
78%	WALLISER KTBK	WKB.S	118.00	uo	+	+				
100%	WARTECK N	WARN.S	1'980.00	+	+	+				
33%	WISEKEY N	WIHN.S	2.39	o	do	uo				
44%	YPSOMED HOLDING	YPSN.S	128.00	u+	uo	uo				
89%	ZEHNDER I	ZEHN.S	36.85	+	+	do	Turning down from the resistance at 38.30 / 38.80.			
67%	ZUEBLIN N	ZUBN.S	26.60	+	uu+	-				
100%	ZUG ESTATE HLD	ZUGN.S	1'885.00	+	+	+				
44%	ZUGER KB I	ZG.S	6'140.00	do	+	dd-				
17%	ZUR ROSE GROUP N	ROSEG.S	93.10	uo	-	o				
100%	ZURICH INSURANCE	ZURN.S	350.00	+	uu+	uu+	see chart			
0%	ZWAHLEN & MAYR	ZWM.S	250.00	-	-	-				

CS GROUP – 240-minute chart

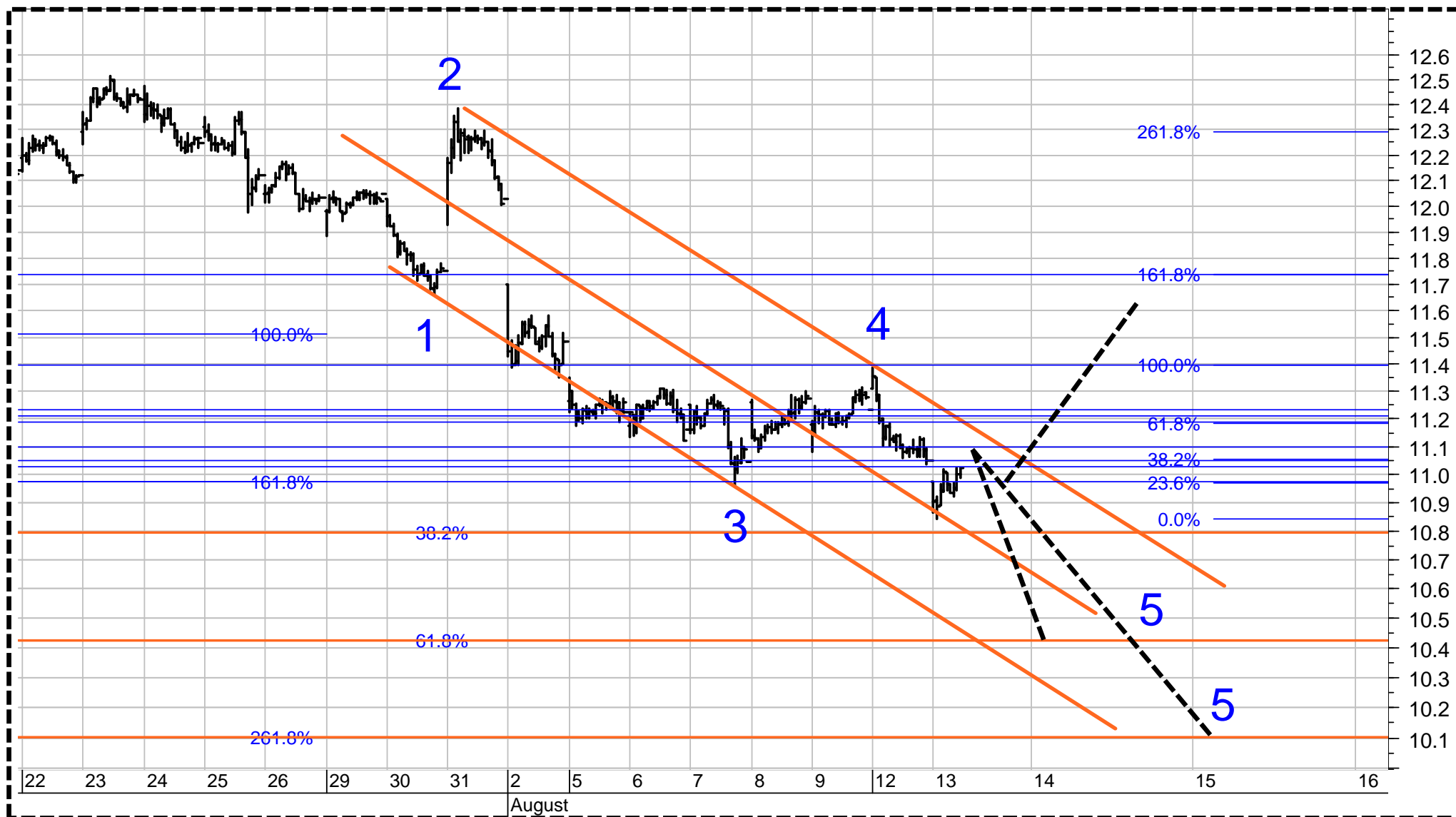
CSG is testing support at 11, a break of which will signal 10.50 or 10.10.
A break of 10.10 could activate the support at 9.35.

See the details of the latest downleg (within the dashed circle) on the next page.



CS GROUP – 30-minute chart

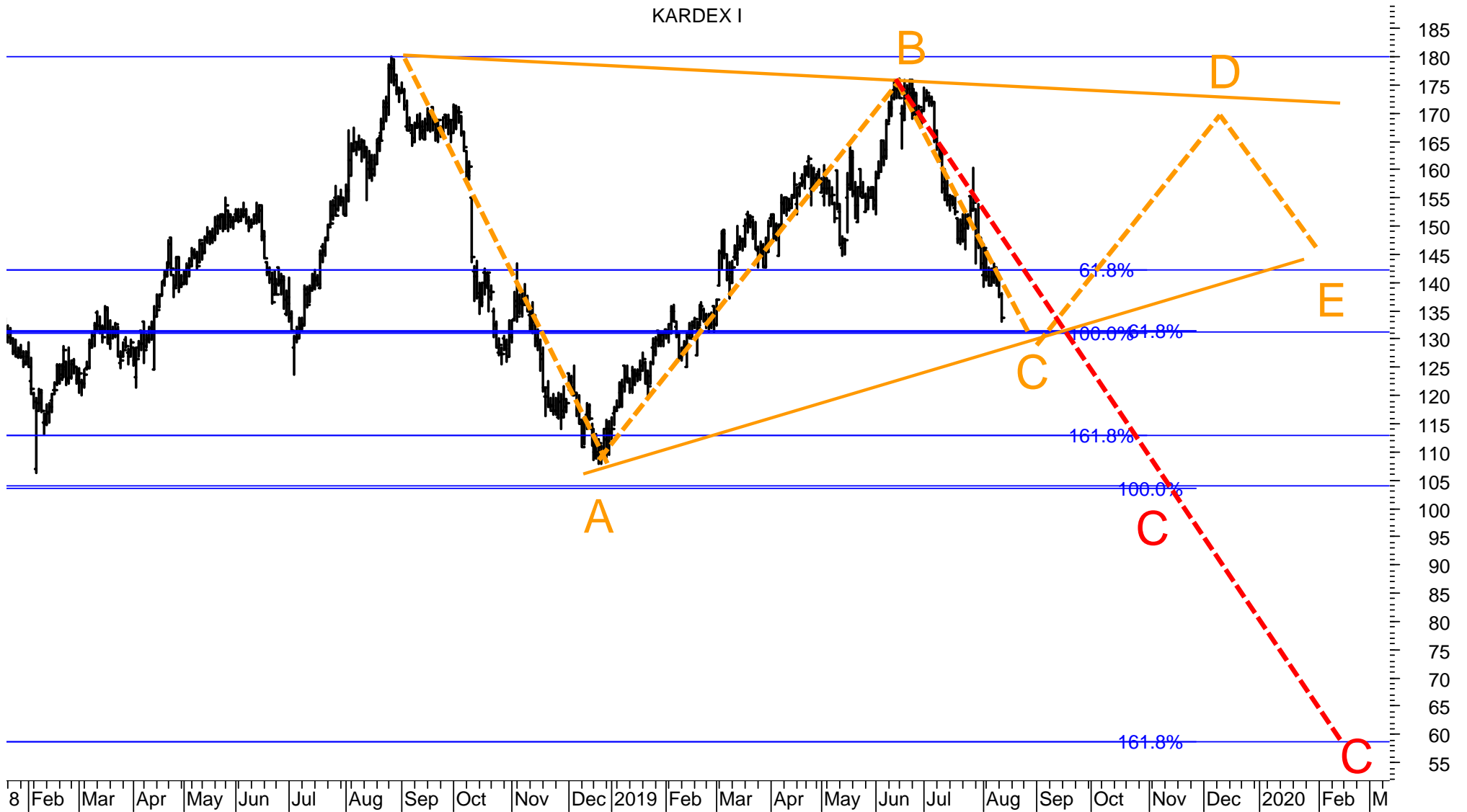
CSG could be tracing out Wave 5 within the five-wave downleg from July.
Wave 5 could register a low at 10.80 or 10.40 or 10.10.
It would take a rally above 11.10 / 11.25 to signal a short-term upturn.



KARDEX – daily chart

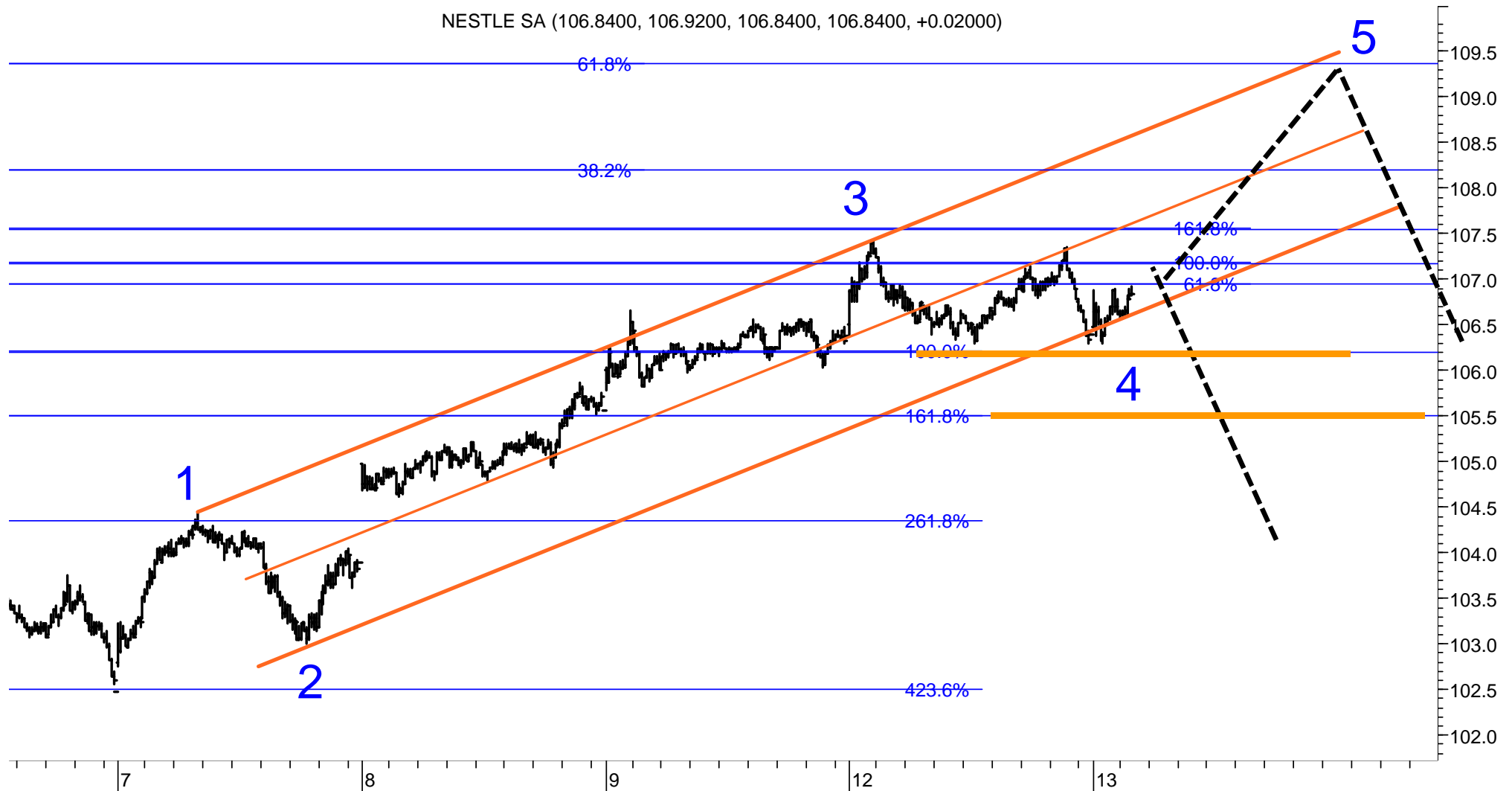
Kardex fell to the major support just above 130.

A break of 130 could trigger more selling to the support at 113 / 103 (C = 1 x A) or 58 (C = 1.618 x A)



NESTLE – 5-minute chart

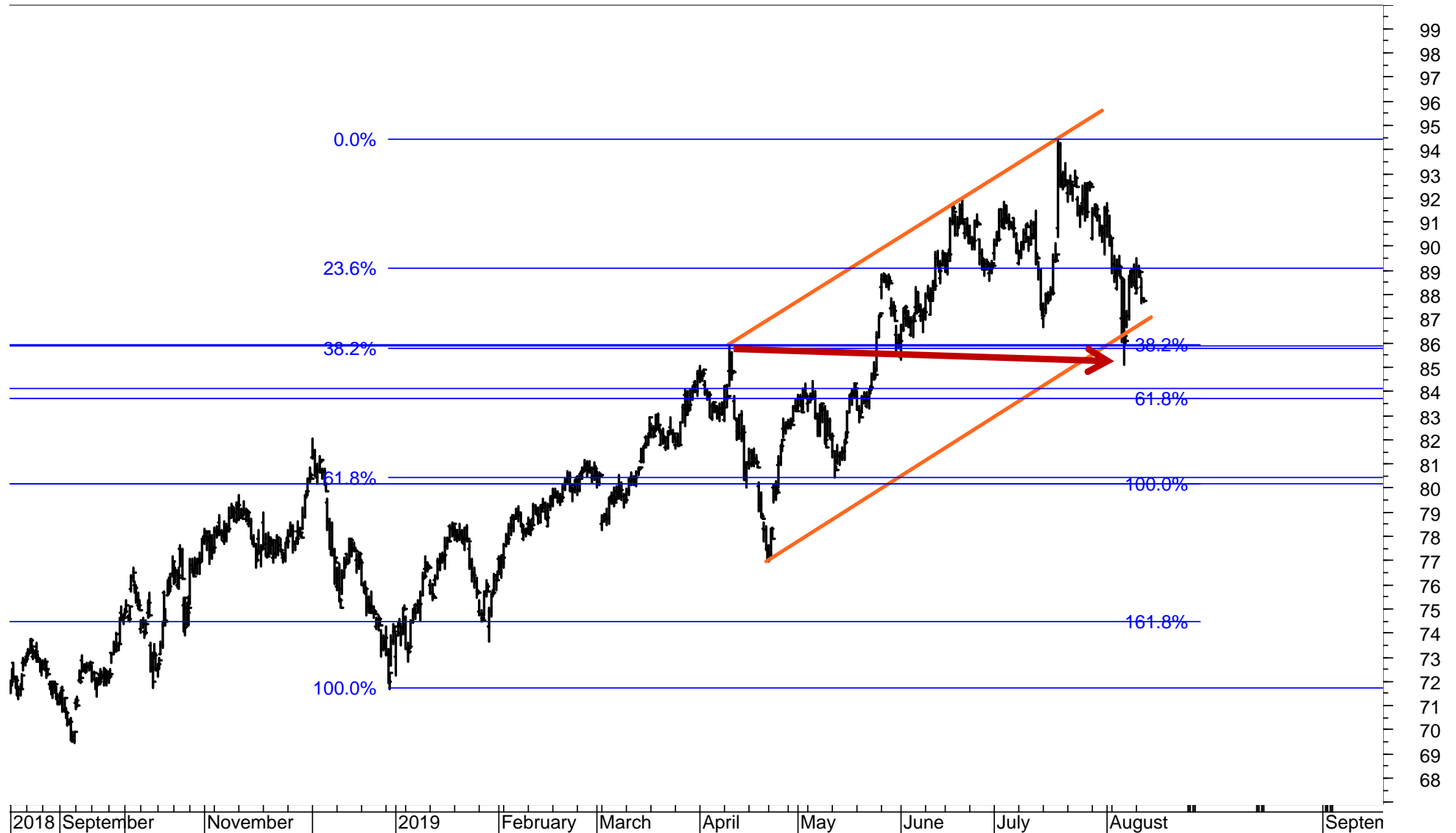
Nestlé is likely to form Wave 4 within the uptrend from early August. Wave 5 could push Nestlé towards 109.50. I expect the stock to register another top around this level. Clearly, a break of 106.20 / 105.50 would signal that a serious price correction or a medium-term downturn is already unfolding.



NOVARTIS – 240-minute chart

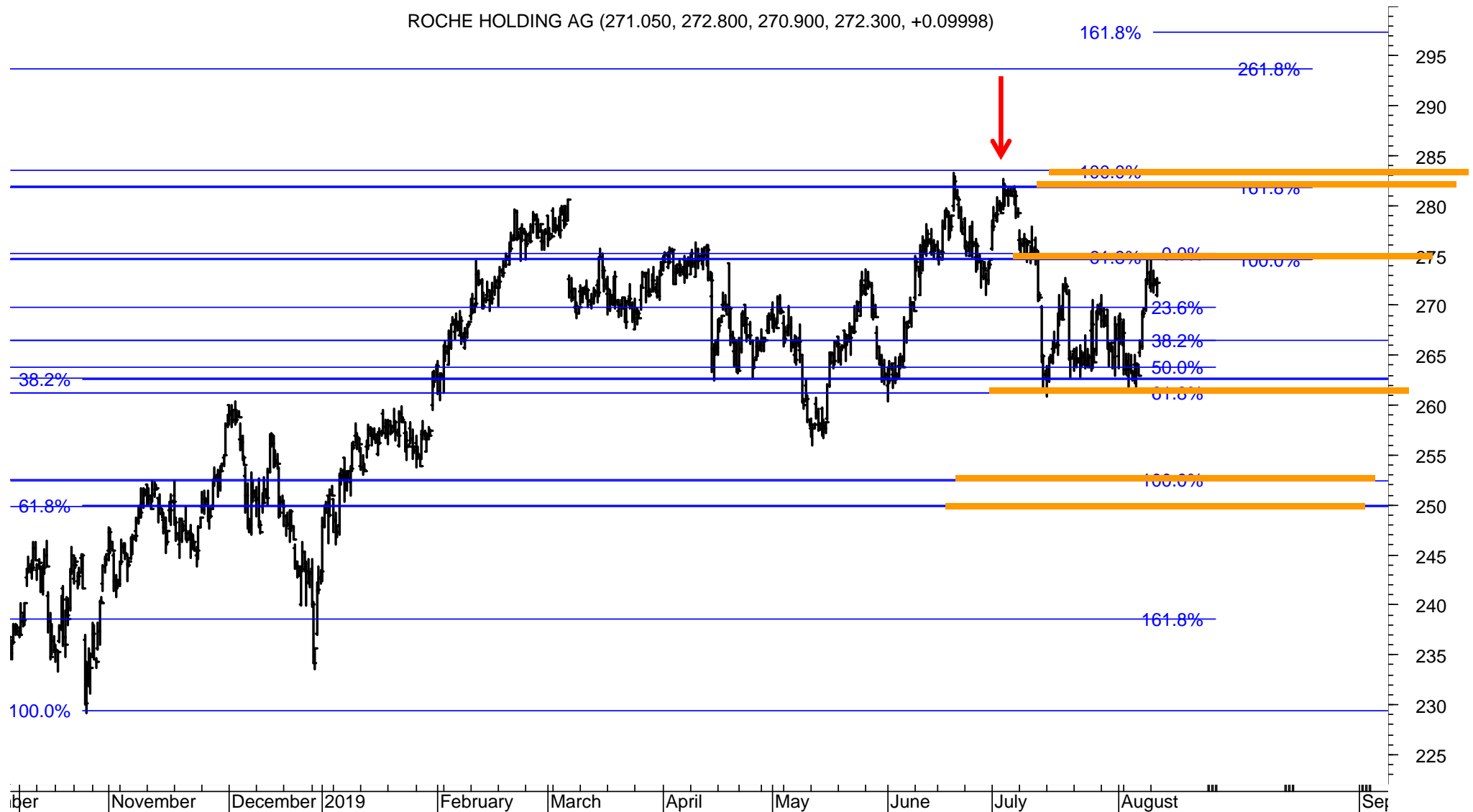
Novartis sold off from 94.50 to 85. The overlapping of the August-low with the April-high could be evidence that the stock is topping medium term.

A break of 84 / 83.50 would signal 80, a break of which could activate the supports at 74 / 71.50.



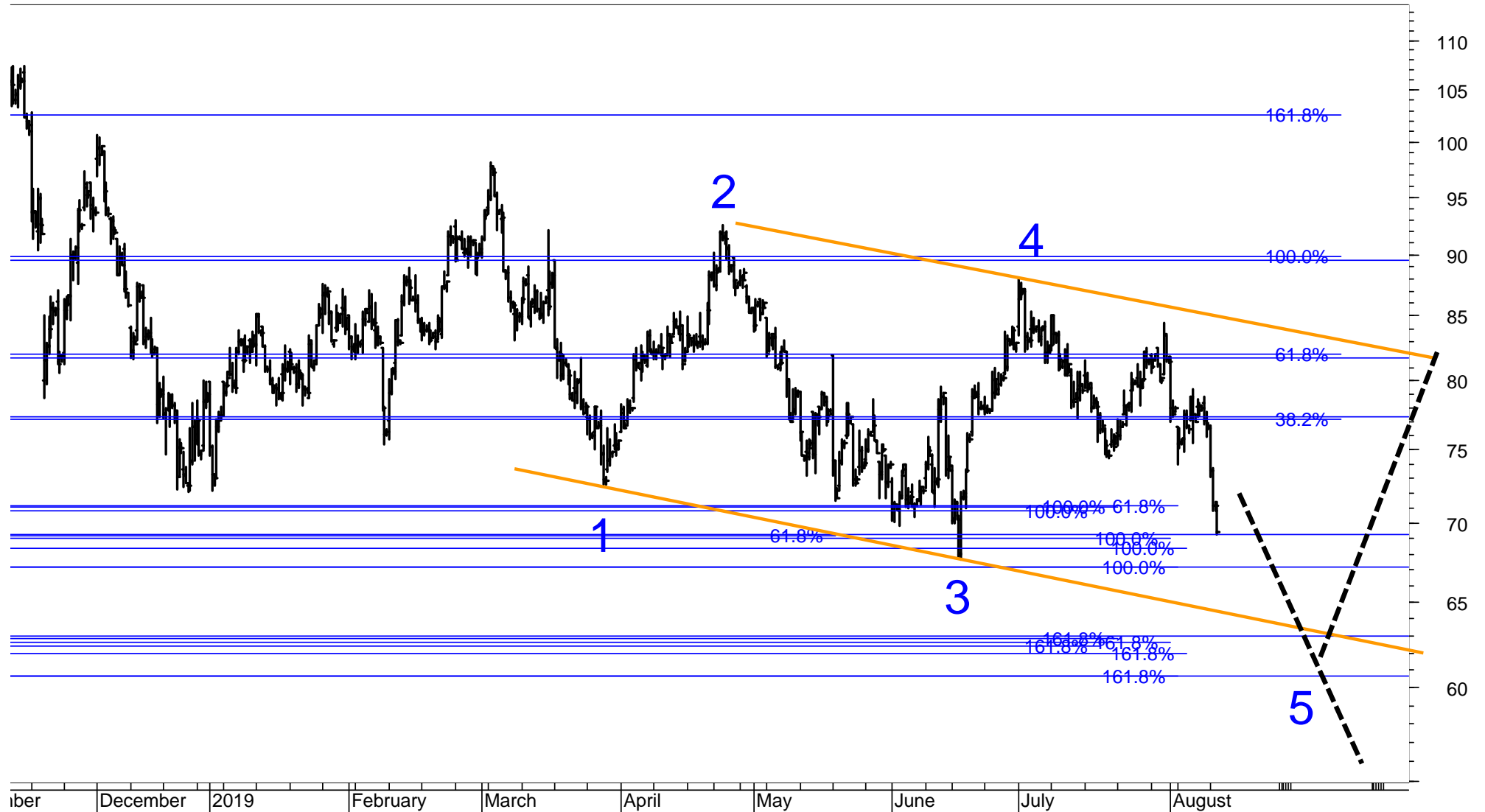
ROCHE GS – 240-minute chart

Roche is testing major resistance at 275. It must rise above this level to prove that the uptrend is not over yet. The risk is that the uptrend has peaked with a failure on 3.7.2019 at 282.70. A major decline would be signaled if 266 and 261 is broken. Next major support is at 252 / 250.



UBLOX – 240-minute chart

Ublox could be tracing out Wave 5, down to 67 or 60.
It would take a rise above 77.50 to signal a major upturn of the long-term trend.



ZURICH INSURANCE – daily chart

Zurich managed to turn up just above the major support at 329.
It could be forming a Wedge with next resistance at 355 / 358 or 370 / 375.
Sell signals would be triggered if 342, 337 and 328 are broken.

ZURICH INSURANCE (349.000, 351.300, 347.500, 348.000, -2.00000)



STOXX 200 stocks – listed according to the Score (range from 100% to 0%, 40%-60% is neutral)

100%	BAYER (XET)	BAYGn.DE
100%	CARLSBERG B	CARLb.CO
100%	ESSILORLUXOTTICA	ESLX.PA
100%	GENMAB	GEN.CO
100%	ICA GRUPPEN	ICAA.ST
100%	NOVO NORDISK 'B'	NOVOb.CO
100%	ORSTED	ORSTED.CO
100%	VINCI	SGEF.PA
94%	AIR LIQUIDE	AIRP.PA
94%	ASTRAZENECA	AZN.L
94%	BRITISH AMERICAN TOBACCO	BATS.L
94%	CASTELLUM	CAST.ST
94%	COMPASS GROUP	CPG.L
94%	HENKEL PREF. (XET)	HNGGn.DE
94%	NATIONAL GRID	NG.L
94%	RWE (XET)	RWEGn.DE
94%	TEL2 B	TEL2b.ST
94%	VIVENDI	VIV.PA
94%	VODAFONE GROUP	VOD.L
89%	FABEGE	FABG.ST
89%	INNOGY (XET)	IGY.DE
89%	LOOMIS B	LOOMb.ST
89%	NESTE	NESTE.HE
89%	PHILIPS ELTN.KONINKLIJKE	PHG.AS
83%	ANHEUSER-BUSCH INBEV	ABI.BR
83%	BEIERSDORF (XET)	BEIG.DE
83%	DEUTSCHE BOERSE (XET)	DBIGn.DE
83%	DIAGEO	DGE.L
83%	ENDESA	ELE.MC
83%	FASTIGHETS BALDER B	BALDb.ST
83%	GLAXOSMITHKLINE	GSK.L
83%	IBERDROLA	IBE.MC
83%	MERCK KGAA (XET)	MRCGn.DE
83%	ORKLA	ORK.OL
83%	RELX	REL.L
83%	SCHIBSTED A	SBSTA.OL
83%	SKANSKA B	SKAb.ST
83%	TELENOR	TEL.OL
78%	AAK	AAK.ST
78%	COLOPLAST B	COLOb.CO
78%	DANONE	DANO.PA
78%	ELEKTA B	EKTab.ST
78%	KONE 'B'	KNEBV.HE
67%	ACCOR	ACCP.PA
67%	AMBU B	AMBUb.CO
67%	ASML HOLDING	ASML.AS
67%	ASSA ABLOY B	ASSAb.ST
67%	INDITEX	ITX.MC
67%	KINNEVIK B	KINVb.ST
61%	NOKIA	NOKIA.HE

56%	CD PROJECT RED	CDR.WA
50%	AIRBUS	AIR.PA
50%	ESSITY B	ESSITYb.ST
50%	FERRARI (MIL)	RACE.MI
50%	IMPERIAL BRANDS	IMB.L
50%	KONINKLIJKE AHOLD DELHA	AD.AS
50%	SALMAR	SALM.OL
44%	UNILEVER (UK)	ULVR.L
39%	DEUTSCHE POST (XET)	DPWGn.DE
39%	ELECTROLUX B	ELUXb.ST
39%	ENEL	ENEI.MI
39%	GETINGE B	GETIb.ST
39%	VONOVIA (XET)	VNAn.DE
33%	ADIDAS (XET)	ADSGn.DE
33%	DSV 'B'	DSV.CO
33%	INFINEON TECHS. (XET)	IFXGn.DE
33%	MUENCHENER RUCK. (XET)	MUVGn.DE
28%	AENA SME	AENA.MC
28%	DEUTSCHE BANK (XET)	DBGn.DE
28%	ENGIE	ENGIE.PA
28%	EPIROC A	EPIRa.ST
28%	GJENSIDIGE FORSIKRING	GJFS.OL
28%	INTESA SANPAOLO	ISP.MI
28%	NATURGY ENERGY	NTGY.MC
28%	PANDORA	PNDORA.CO
28%	TELIA COMPANY	TELIA.ST
28%	TRYG	TRYG.CO
22%	ATLAS COPCO A	ATCOa.ST
22%	CHRISTIAN DIOR	DIOR.PA
22%	CRH (DUB)	CRH.I
22%	DOMETIC GROUP	DOMETIC.ST
22%	HEINEKEN	HEIN.AS
22%	HEINEKEN HOLDING	HEIO.AS
22%	HERMES INTL.	HRMS.PA
22%	HUSQVARNA B	HUSQb.ST
22%	INVESTOR B	INVEb.ST
22%	LINDE (XET)	LINI.DE
22%	LVMH	LVMH.PA
22%	NIBE INDUSTRIER B	NIBEb.ST
22%	PERNOD-RICARD	PERP.PA
22%	SAFRAN	SAF.PA
22%	SCHNEIDER ELECTRIC	SCHN.PA
22%	YARA INTERNATIONAL	YAR.OL
17%	AKER BP	AKERBP.OL
17%	BASF (XET)	BASFn.DE
17%	BOLIDEN ORD SHS	BOL.ST
17%	COVESTRO (XET)	iCOV.DE
17%	HEXPOL B	HPOLb.ST
17%	LUNDIN PETROLEUM	LUPE.ST
17%	PEUGEOT	PEUP.PA

17%	ROYAL BANK OF SCTL.GP.	RBS.L
17%	SAAB B	SAABb.ST
17%	SOCIETE GENERALE	SOGN.PA
17%	SWEDISH ORPHAN BIOVITRU	SOBIV.ST
17%	THALES	TCFP.PA
17%	TRELLEBORG B	TRELb.ST
11%	A P MOLLER MAERSK B	MAERSKb.CO
11%	ALLIANZ (XET)	ALVG.DE
11%	ASSICURAZIONI GENERALI	GASI.MI
11%	ASSOCIATED BRIT.FOODS	ABF.L
11%	AXA	AXAF.PA
11%	BANK POLSKA KASA OPIEKI	PEO.WA
11%	BNP PARIBAS	BNPP.PA
11%	CONTINENTAL (XET)	CONG.DE
11%	DANSKE BANK	DANSKE.CO
11%	FIAT CHRYSLER AUTOS.	FCHA.MI
11%	HEIDELBERGCEMENT (XET)	HEIG.DE
11%	INDUSTRIVARDEN A	INDUa.ST
11%	MICHELIN	MICP.PA
11%	PKO BANK	PKO.WA
11%	PRUDENTIAL	PRU.L
11%	PZU GROUP	PZU.WA
11%	SAMPO 'A'	SAMPO.HE
11%	SKF B	SKFb.ST
11%	STANDARD CHARTERED	STAN.L
11%	VESTAS WINDSYSTEMS	VWS.CO
11%	VOLKSWAGEN PREF. (XET)	VOWG_p.DE
11%	WIRECARD (XET)	WDIG.DE
6%	ERICSSON B	ERICb.ST
6%	KERING	PRTP.PA
6%	KINDRED GROUP SDR	KINDSdb.ST
6%	NORDEA BANK (OME)	NDASE.ST
6%	SAP (XET)	SAPG.DE
6%	SVENSKA HANDELSBANKEN A	SHBa.ST
6%	SWEDBANK A	SWEDa.ST
6%	SWEDISH MATCH	SWMA.ST
6%	TESCO	TSCO.L
6%	UNILEVER	UNA.AS
6%	WFD UNIBAIL RODAMCO STA	URW.AS
0%	ABN AMRO BANK	ABNd.AS
0%	ADYEN	ADYEN.AS
0%	ALFA LAVAL	ALFA.ST
0%	AMADEUS IT GROUP	AMA.MC
0%	ANGLO AMERICAN	AAL.L
0%	ARCELORMITTAL	MT.AS
0%	BANCO SANTANDER	SAN.MC
0%	BARCLAYS	BARC.L
0%	BBV.ARGENTARIA	BBVA.MC
0%	BHP GROUP	BHPb.L
0%	BMW (XET)	BMWG.DE

0%	BP	BP.L
0%	BT GROUP	BT.L
0%	CHRISTIAN HANSEN HOLDING	CHRH.CO
0%	DAIMLER (XET)	DAIGn.DE
0%	DASSAULT SYSTEMES	DAST.PA
0%	DEUTSCHE LUFTHANSA (XET)	LHAGn.DE
0%	DEUTSCHE TELEKOM (XET)	DTEGn.DE
0%	DNB	DNB.OL
0%	E ON N (XET)	EONGn.DE
0%	EDF	EDF.PA
0%	ENI	ENI.MI
0%	EQUINOR	EQNR.OL
0%	FRESENIUS (XET)	FREG.DE
0%	FRESENIUS MED.CARE (XET)	FMEGn.DE
0%	GLENCORE	GLEN.L
0%	GN STORE NORD	GN.CO
0%	HEXAGON B	HEXAb.ST
0%	HSBC HOLDINGS	HSBA.L
0%	ING GROEP	INGA.AS
0%	ISS	ISS.CO
0%	JYSKE BANK	JYSK.CO
0%	KBC GROUP	KBC.BR
0%	KGHM	KGH.WA
0%	LLOYDS BANKING GROUP	LLOY.L
0%	L'OREAL	OREP.PA
0%	NORSK HYDRO	NHY.OL
0%	NOVOZYMES B	NZYMb.CO
0%	ORANGE	ORAN.PA
0%	PLKNC.NAFTOWY ORLEN	PKN.WA
0%	POLISH OIL AND GAS	PGN.WA
0%	RECKITT BENCKISER GROUP	RB.L
0%	REPSOL YPF	REP.MC
0%	RIO TINTO	RIO.L
0%	ROYAL DUTCH SHELL A	RDSa.AS
0%	SANDVIK	SAND.ST
0%	SANOFI	SASY.PA
0%	SANTANDER BANK POLSKA	SPL1.WA
0%	SECURITAS B	SECUb.ST
0%	SIEMENS (XET)	SIEGn.DE
0%	SIEMENS (XET) HEALTHINEEF	SHLGn.DE
0%	SIMCORP	SIM.CO
0%	SKANDINAVISKA ENSKILDA B	SEBa.ST
0%	STOREBRAND	STB.OL
0%	SUBSEA 7	SUBC.OL
0%	SVENSKA CELLULOZA AKTIEB	SCAb.ST
0%	TELEFONICA	TEF.MC
0%	TGS-NOPEC GEOPHS.	TGS.OL
0%	THYSSENKRUPP (XET)	TKAGn.DE
0%	TOTAL	TOTF.PA
0%	VOLVO B	VOLVb.ST

STOXX 200 stocks – listed alphabetically (A-Infineon)

SCORE	COMPANY	RIC	PRICE	LT	MT	ST
11%	A P MOLLER MAERSK B	MAERSKb.CO	6'960.00	o	-	-
78%	AAK	AAK.ST	195.85	+	+	u+
0%	ABN AMRO BANK	ABNd.AS	15.89	-	-	-
67%	ACCOR	ACCP.PA	38.35	u+	+	-
33%	ADIDAS (XET)	ADSGn.DE	261.70	+	-	-
0%	ADYEN	ADYEN.AS	670.00	-	-	-
28%	AENA SME	AENA.MC	164.30	u+	-	uo
94%	AIR LIQUIDE	AIRP.PA	123.35	+	u+	uu+
50%	AIRBUS	AIR.PA	125.20	+	uo	-
17%	AKER BP	AKERBP.OL	229.20	-	uo	-
0%	ALFA LAVAL	ALFA.ST	168.50	-	-	-
11%	ALLIANZ (XET)	ALVG.DE	200.25	o	-	-
0%	AMADEUS IT GROUP	AMA.MC	68.74	-	-	-
67%	AMBU B	AMBUb.CO	104.55	-	u+	uu+
0%	ANGLO AMERICAN	AAL.L	1'817.40	-	-	-
83%	ANHEUSER-BUSCH INBEV	ABI.BR	86.22	+	+	d-
0%	ARCELORMITTAL	MT.AS	11.83	-	-	-
67%	ASML HOLDING	ASML.AS	186.16	+	+	-
67%	ASSA ABLOY B	ASSAb.ST	215.30	+	+	-
11%	ASSICURAZIONI GENERALI	GASI.MI	16.04	do	-	-
11%	ASSOCIATED BRIT.FOODS	ABF.L	2'333.00	o	-	dd-
94%	ASTRAZENECA	AZN.L	7'330.00	+	+	+
22%	ATLAS COPCO A	ATCOa.ST	270.00	+	-	-
11%	AXA	AXAF.PA	21.60	o	-	-
0%	BANCO SANTANDER	SAN.MC	3.55	d-	-	-
11%	BANK POLSKA KASA OPIEKI	PEO.WA	97.20	o	-	-
0%	BARCLAYS	BARC.L	141.48	d-	-	-
17%	BASF (XET)	BASFn.DE	58.00	-	uo	-
100%	BAYER (XET)	BAYGn.DE	63.76	u+	u+	uu+
0%	BBV.ARGENTARIA	BBVA.MC	4.28	-	-	-
83%	BEIERSDORF (XET)	BEIG.DE	108.50	+	uu+	uu+
0%	BHP GROUP	BHPB.L	1'797.40	-	-	-
0%	BMW (XET)	BMWG.DE	60.83	-	d-	-
11%	BNP PARIBAS	BNPP.PA	39.67	o	-	-
17%	BOLIDEN ORD SHS	BOL.ST	204.00	-	uo	-
0%	BP	BP.L	500.80	-	-	-
94%	BRITISH AMERICAN TOBACCO	BATS.L	3'053.50	+	+	uu+
0%	BT GROUP	BT.L	172.18	-	-	-
100%	CARLSBERG B	CARLb.CO	973.40	+	uu+	uu+
94%	CASTELLUM	CAST.ST	195.55	+	+	u+
56%	CD PROJECT RED	CDR.WA	220.00	u+	uu+	-
22%	CHRISTIAN DIOR	DIOR.PA	447.80	u+	-	-
0%	CHRISTIAN HANSEN HOLDING	CHRH.CO	545.80	-	-	-
78%	COLOPLAST B	COLOb.CO	794.00	+	+	uo
94%	COMPASS GROUP	CPG.L	2'073.00	+	+	u+
11%	CONTINENTAL (XET)	CONG.DE	110.98	o	d-	-
17%	COVESTRO (XET)	iCOV.DE	39.42	-	uo	-
22%	CRH (DUB)	CRH.I	28.55	u+	-	-
0%	DAIMLER (XET)	DAIGn.DE	42.35	d-	-	-
78%	DANONE	DANO.PA	77.78	+	+	uu+

SCORE	COMPANY	RIC	PRICE	LT	MT	ST
11%	DANSKE BANK	DANSKE.CO	93.28	uo	-	-
0%	DASSAULT SYSTEMES	DAST.PA	128.40	-	-	-
28%	DEUTSCHE BANK (XET)	DBKGn.DE	6.30	do	do	-
83%	DEUTSCHE BOERSE (XET)	DB1Gn.DE	127.80	+	+	uu+
39%	DEUTSCHE POST (XET)	DPWGN.DE	28.53	u+	uo	-
0%	DEUTSCHE TELEKOM (XET)	DTEGn.DE	14.46	-	-	d-
83%	DIAGEO	DGE.L	3'424.00	+	uu+	u+
0%	DNB	DNB.OL	150.25	-	-	-
22%	DOMETIC GROUP	DOMETIC.ST	84.40	+	-	-
33%	DSV 'B'	DSV.CO	616.00	+	-	-
0%	E ON N (XET)	EONGn.DE	8.39	-	-	-
0%	EDF	EDF.PA	10.50	-	-	-
39%	ELECTROLUX B	ELUXb.ST	222.70	o	uo	uu+
78%	ELEKTA B	EKTAb.ST	134.25	+	+	do
83%	ENDESA	ELE.MC	23.09	+	uu+	u+
39%	ENEL	ENEI.MI	6.06	+	d-	uo
28%	ENGIE	ENGIE.PA	13.31	o	uo	-
0%	ENI	ENI.MI	13.17	-	-	-
28%	EPIROC A	EPIRa.ST	96.34	do	o	-
0%	EQUINOR	EQNR.OL	149.40	-	-	-
6%	ERICSSON B	ERICb.ST	83.24	-	-	uo
100%	ESSILORLUXOTTICA	ESLX.PA	128.50	+	+	+
50%	ESSITY B	ESSITYb.ST	284.70	+	-	u+
89%	FABEGE	FABG.ST	155.20	+	+	uu+
83%	FASTIGHETS BALDER B	BALDb.ST	337.00	+	+	uu+
50%	FERRARI (MIL)	RACE.MI	141.90	+	o	-
11%	FIAT CHRYSLER AUTOS.	FCHA.MI	11.60	uo	-	-
0%	FRESENIUS (XET)	FREG.DE	42.26	-	-	-
0%	FRESENIUS MED.CARE (XET)	FMEG.DE	59.40	-	-	-
100%	GENMAB	GEN.CO	1'275.50	+	+	uu+
39%	GETINGE B	GETIb.ST	138.45	+	-	o
28%	GJENSIDIGE FORSIKRING	GJFS.OL	169.85	+	-	uo
83%	GLAXOSMITHKLINE	GSK.L	1'669.20	+	+	-
0%	GLENCORE	GLEN.L	230.85	-	-	-
0%	GN STORE NORD	GN.CO	308.50	-	-	-
11%	HEIDELBERGCEMENT (XET)	HEIG.DE	59.90	o	-	-
22%	HEINEKEN	HEIN.AS	94.54	+	-	-
22%	HEINEKEN HOLDING	HEIO.AS	89.00	u+	-	-
94%	HENKEL PREF. (XET)	HNKG.DE	91.90	+	+	uu+
22%	HERMES INTL.	HRMS.PA	615.40	u+	-	-
0%	HEXAGON B	HEXAb.ST	449.30	-	-	-
17%	HXPOL B	HPOLb.ST	69.95	-	o	-
0%	HSBC HOLDINGS	HSBA.L	611.00	d-	-	-
22%	HUSQVARNA B	HUSQb.ST	81.00	+	-	-
83%	IBERDROLA	IBE.MC	8.89	+	+	+
100%	ICA GRUPPEN	ICAA.ST	437.60	+	+	+
50%	IMPERIAL BRANDS	IMB.L	2'083.50	-	+	-
67%	INDITEX	ITX.MC	26.34	+	+	-
11%	INDUSTRIVARDEN A	INDUa.ST	205.20	do	-	-
33%	INFINEON TECHS. (XET)	IFXGn.DE	16.06	-	u+	-

STOXX 200 stocks – listed alphabetically (ING-Z)

SCORE	COMPANY	RIC	PRICE	LT	MT	ST
0%	ING GROEP	INGA.AS	8.50	-	-	-
89%	INNOGY (XET)	IGY.DE	43.27	+	+	o
28%	INTESA SANPAOLO	ISP.MI	1.84	o	do	-
22%	INVESTOR B	INVEb.ST	440.00	+	-	-
0%	ISS	ISS.CO	183.75	-	-	-
0%	JYSKE BANK	JYSK.CO	196.55	-	-	-
0%	KBC GROUP	KBC.BR	52.04	-	-	-
6%	KERING	PRTP.PA	448.80	-	-	uo
0%	KGHM	KGH.WA	79.30	-	-	-
6%	KINDRED GROUP SDR	KINDsdb.ST	50.70	-	-	uo
67%	KINNEVIK B	KINVB.ST	246.80	uu+	uu+	uu+
78%	KONE 'B'	KNEBV.HE	51.90	+	u+	uu+
50%	KONINKLIJKE AHOLD DELHAI	AD.AS	20.35	-	u+	-
22%	LINDE (XET)	LINI.DE	172.50	+	-	-
0%	LLOYDS BANKING GROUP	LLOY.L	48.74	-	-	-
89%	LOOMIS B	LOOMB.ST	329.40	u+	uu+	uo
0%	L'OREAL	OREP.PA	234.50	-	-	-
0%	DEUTSCHE LUFTHANSA (XET)	LHAG.DE	14.13	-	-	-
17%	LUNDIN PETROLEUM	LUPE.ST	283.20	-	o	-
22%	LVMH	LVMH.PA	356.55	u+	-	-
11%	MICHELIN	MICP.PA	95.00	o	-	-
83%	MERCK KGAA (XET)	MRCG.DE	94.50	uu+	+	uu+
33%	MUENCHENER RUCK. (XET)	MUVGn.DE	217.80	u+	-	uu+
94%	NATIONAL GRID	NG.L	847.40	+	+	u+
28%	NATURGY ENERGY	NTGY.MC	23.44	-	uo	+
89%	NESTE	NESTE.HE	30.62	uu+	u+	uu+
22%	NIBE INDUSTRIER B	NIBEb.ST	132.35	+	-	-
61%	NOKIA	NOKIA.HE	4.75	o	+	d-
6%	NORDEA BANK (OME)	NDASE.ST	60.30	-	-	o
0%	NORSK HYDRO	NHY.OL	27.64	-	-	-
100%	NOVO NORDISK 'B'	NOVOb.CO	336.45	u+	uu+	u+
0%	NOVOZYMES B	NZYMb.CO	280.40	-	-	-
0%	ORANGE	ORAN.PA	13.26	-	-	d-
83%	ORKLA	ORK.OL	77.76	+	uu+	u+
100%	ORSTED	ORSTED.CO	647.40	+	+	uu+
28%	PANDORA	PNDORA.CO	231.70	o	o	-
22%	PERNOD-RICARD	PERP.PA	156.70	uu+	-	-
17%	PEUGEOT	PEUP.PA	19.89	-	uo	-
89%	PHILIPS ELTN.KONINKLIJKE	PHG.AS	41.46	+	+	o
11%	PKO BANK	PKO.WA	38.90	uo	-	-
0%	PLKNC.NAFTOWY ORLEN	PKN.WA	89.28	d-	dd-	-
0%	POLISH OIL AND GAS	PGN.WA	4.81	-	d-	-
11%	PRUDENTIAL	PRU.L	1'477.00	uo	-	-
11%	PZU GROUP	PZU.WA	40.19	o	-	-
0%	RECKITT BENCKISER GROUP	RB.L	6'127.00	-	-	-
83%	RELX	REL.L	1'946.50	+	uu+	uu+
0%	REPSOL YPF	REP.MC	12.96	-	-	-
0%	RIO TINTO	RIO.L	4'040.50	-	-	-
17%	ROYAL BANK OF SCTL.GP.	RBS.L	201.00	-	uo	-
0%	ROYAL DUTCH SHELL A	RDSa.AS	25.57	-	-	-

SCORE	COMPANY	RIC	PRICE	LT	MT	ST
94%	RWE (XET)	RWEG.DE	25.39	+	+	+
17%	SAAB B	SAABb.ST	289.00	-	uo	-
22%	SAFRAN	SAF.PA	127.15	u+	-	-
50%	SALMAR	SALM.OL	410.50	uo	u+	uo
11%	SAMPO 'A'	SAMPO.HE	37.67	-	-	uu+
0%	SANDVIK	SAND.ST	136.20	-	-	-
0%	SANOFI	SASY.PA	73.82	-	-	-
0%	SANTANDER BANK POLSKA	SPL1.WA	305.00	-	-	-
6%	SAP (XET)	SAPG.DE	106.34	d-	-	uo
83%	SCHIBSTED A	SBSTA.OL	243.20	u+	+	u+
22%	SCHNEIDER ELECTRIC	SCHN.PA	73.06	+	-	-
0%	SECURITAS B	SECUB.ST	145.10	-	-	-
0%	SIEMENS (XET)	SIEGn.DE	88.62	-	-	-
0%	SIEMENS (XET) HEALTHINEER	SHLG.DE	35.98	dd-	dd-	dd-
0%	SIMCORP	SIM.CO	575.00	-	-	-
0%	SKANDINAVISKA ENSKILDA B	SEBa.ST	85.14	-	-	-
83%	SKANSKA B	SKAb.ST	176.20	+	+	-
11%	SKF B	SKFb.ST	149.35	o	-	-
17%	SOCIETE GENERALE	SOGN.PA	21.79	-	o	-
11%	STANDARD CHARTERED	STAN.L	614.20	o	-	-
0%	STOREBRAND	STB.OL	55.00	-	-	-
0%	SUBSEA 7	SUBC.OL	85.46	-	-	-
0%	SVENSKA CELLULOZA AKTIEB	SCAb.ST	74.82	-	d-	d-
6%	SVENSKA HANDELSBANKEN A	SHBa.ST	85.52	-	-	uo
6%	SWEDBANK A	SWEDa.ST	126.05	-	-	uo
6%	SWEDISH MATCH	SWMA.ST	374.50	-	-	uo
17%	SWEDISH ORPHAN BIOVITRU	SOBIV.ST	180.00	-	o	-
94%	TELE2 B	TEL2b.ST	137.70	+	u+	uu+
0%	TELEFONICA	TEF.MC	6.25	-	-	-
83%	TELENOR	TEL.OL	182.90	+	+	+
28%	TELIA COMPANY	TELIA.ST	41.26	do	o	-
6%	TESCO	TSCO.L	216.80	-	-	uo
0%	TGS-NOPEC GEOPHS.	TGS.OL	201.00	-	-	-
17%	THALES	TCFP.PA	101.00	-	uo	-
0%	THYSSENKRUPP (XET)	TKAG.DE	9.95	-	-	-
0%	TOTAL	TOTF.PA	43.23	-	-	-
17%	TRELLEBORG B	TRELb.ST	124.80	-	uo	-
28%	TRYG	TRYG.CO	202.40	+	-	uo
6%	WFD UNIBAIL RODAMCO STA	URW.AS	127.00	-	-	o
44%	UNILEVER (UK)	ULVR.L	4'927.50	+	-	uu+
6%	UNILEVER	UNA.AS	51.30	-	-	uo
11%	VESTAS WINDSYSTEMS	VWS.CO	535.40	o	-	-
100%	VINCI	SGEF.PA	94.00	+	uu+	uu+
94%	VIVENDI	VIV.PA	26.05	u+	uu+	uu+
94%	VODAFONE GROUP	VOD.L	148.32	+	+	+
11%	VOLKSWAGEN PREF. (XET)	VOWG_p.DE	140.96	o	-	-
0%	VOLVO B	VOLVb.ST	131.95	d-	-	-
39%	VONOVA (XET)	VNA.n.DE	44.65	uo	o	+
11%	WIRECARD (XET)	WDIG.DE	142.25	do	-	-
22%	YARA INTERNATIONAL	YAR.OL	381.30	+	-	-

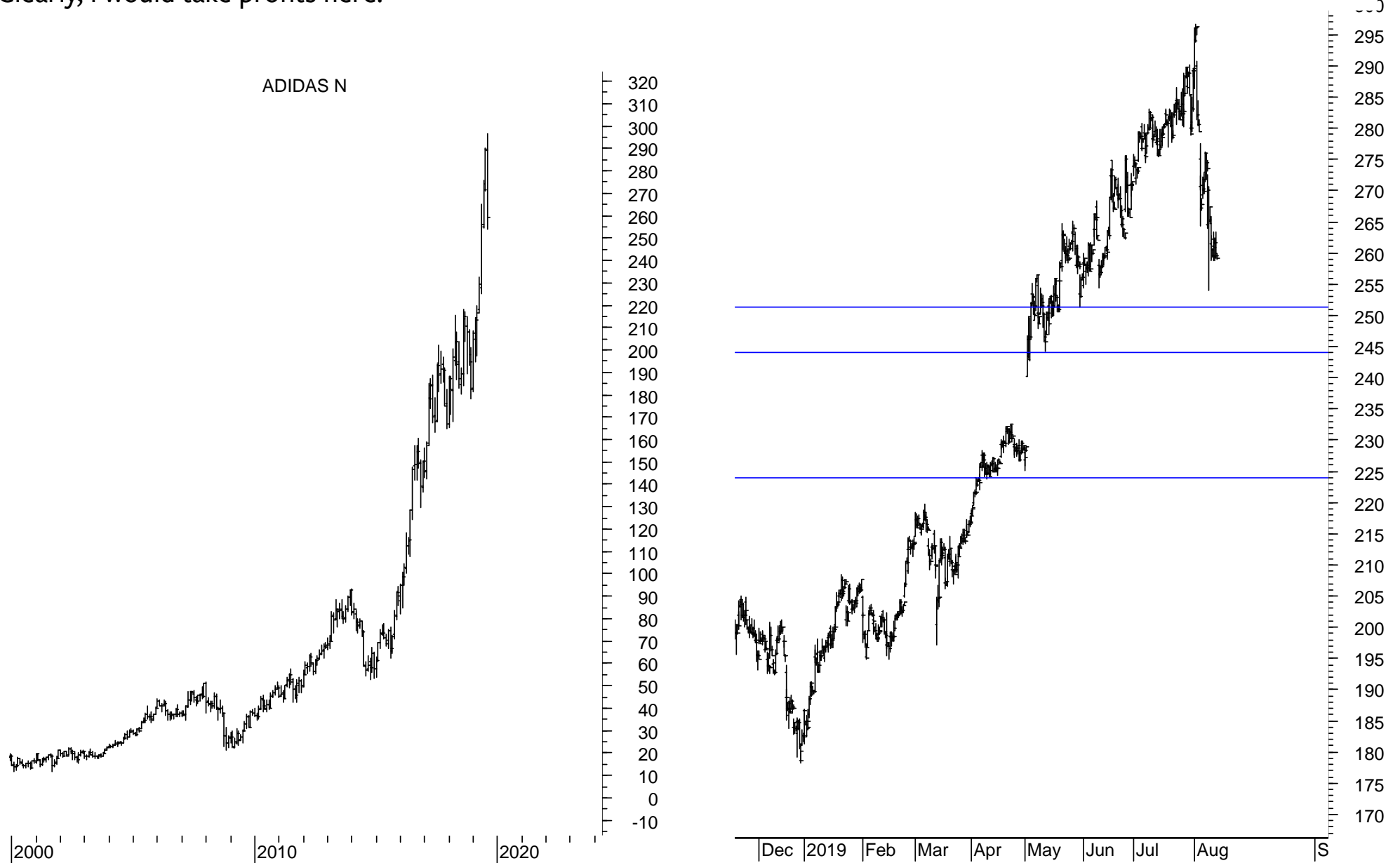
Eurostoxx 50 constituent stocks - listed to Score (left) and alphabetically (right)

100%	BAYER (XET)
100%	ESSILORLUXOTTICA
100%	VINCI
94%	AIR LIQUIDE
94%	VIVENDI
89%	PHILIPS ELTN.KONINKLIJKE
83%	ANHEUSER-BUSCH INBEV
83%	IBERDROLA
78%	DANONE
67%	ASML HOLDING
67%	INDITEX
61%	NOKIA
50%	AIRBUS
50%	KONINKLIJKE AHOLD DELHA
39%	DEUTSCHE POST (XET)
39%	ENEL
33%	ADIDAS (XET)
33%	MUENCHENER RUCK. (XET)
28%	ENGIE
28%	INTESA SANPAOLO
22%	CRH (DUB)
22%	LINDE (XET)
22%	LVMH
22%	SAFRAN
22%	SCHNEIDER ELECTRIC
17%	BASF (XET)
17%	SOCIETE GENERALE
11%	ALLIANZ (XET)
11%	AXA
11%	BNP PARIBAS
11%	VOLKSWAGEN PREF. (XET)
6%	KERING
6%	SAP (XET)
6%	UNILEVER
6%	WFD UNIBAIL RODAMCO STA
0%	AMADEUS IT GROUP
0%	BANCO SANTANDER
0%	BBV.ARGENTARIA
0%	BMW (XET)
0%	DAIMLER (XET)
0%	DEUTSCHE TELEKOM (XET)
0%	ENI
0%	FRESENIUS (XET)
0%	ING GROEP
0%	L'OREAL
0%	ORANGE
0%	SANOFI
0%	SIEMENS (XET)
0%	TELEFONICA
0%	TOTAL

SCORE	COMPANY	RIC	PRICE	LT	MT	ST	COMMENT
83%	ANHEUSER-BUSCH INBEV	ABI.BR	86.22	+	+	d-	Testing support at 84.50, a break of which would signal 82 or 77.50.
33%	ADIDAS (XET)	ADSGn.DE	261.70	+	-	-	The bubble could be bursting.
50%	AIRBUS	AIR.PA	125.20	+	uo	-	Sell signals if the supports at 118 and 113 are broken.
94%	AIR LIQUIDE	AIRP.PA	123.35	+	u+	uu+	New downgradings if the supports at 120 and 117 are broken.
11%	ALLIANZ (XET)	ALVG.DE	200.25	o	-	-	
0%	AMADEUS IT GROUP	AMA.MC	68.74	-	-	-	
67%	ASML HOLDING	ASML.AS	186.16	+	+	-	
11%	AXA	AXAF.PA	21.60	o	-	-	
17%	BASF (XET)	BASFn.DE	58.00	-	uo	-	
100%	BAYER (XET)	BAYGn.DE	63.76	u+	u+	uu+	
0%	BBV.ARGENTARIA	BBVA.MC	4.28	-	-	-	
0%	BMW (XET)	BMWG.DE	60.83	-	d-	-	Testing the mega support at 59.50 / 57.
11%	BNP PARIBAS	BNPP.PA	39.67	o	-	-	
22%	CRH (DUB)	CRH.I	28.55	u+	-	-	
0%	DAIMLER (XET)	DAIGn.DE	42.35	d-	-	-	
78%	DANONE	DANO.PA	77.78	+	+	uu+	Watching the supports at 77, 76.20 and 74.80.
39%	DEUTSCHE POST (XET)	DPWGn.DE	28.53	u+	uo	-	
0%	DEUTSCHE TELEKOM (XET)	DTEGn.DE	14.46	-	-	d-	
39%	ENEL	ENEL.MI	6.06	+	d-	uo	
28%	ENGIE	ENGIE.PA	13.31	o	uo	-	
0%	ENI	ENI.MI	13.17	-	-	-	
100%	ESSILORLUXOTTICA	ESLX.PA	128.50	+	+	+	Close to long-term resistance 132 / 135. Next resistance is 155.
0%	FRESENIUS (XET)	FREG.DE	42.26	-	-	-	
83%	IBERDROLA	IBE.MC	8.89	+	+	+	Could signal 9.50 or 10 if 9.00 / 9.10 is broken.
67%	INDITEX	ITX.MC	26.34	+	+	-	
0%	ING GROEP	INGA.AS	8.50	-	-	-	
28%	INTESA SANPAOLO	ISP.MI	1.84	o	do	-	
6%	KERING	P RTP.PA	448.80	-	-	uo	
50%	KONINKLIJKE AHOLD DELHA	AD.AS	20.35	-	u+	-	
22%	LINDE (XET)	LINI.DE	172.50	+	-	-	
0%	L'OREAL	OREP.PA	234.50	-	-	-	
22%	LVMH	LVMH.PA	356.55	u+	-	-	Sell signal if the support at 337 is broken. Lower support is 318.
33%	MUENCHENER RUCK. (XET)	MUVGn.DE	217.80	u+	-	uu+	
61%	NOKIA	NOKIA.HE	4.75	o	+	d-	
0%	ORANGE	ORAN.PA	13.26	-	-	d-	
89%	PHILIPS ELTN.KONINKLIJKE	PHG.AS	41.46	+	+	o	
22%	SAFRAN	SAF.PA	127.15	u+	-	-	
0%	SANOFI	SASY.PA	73.82	-	-	-	
0%	BANCO SANTANDER	SAN.MC	3.55	d-	-	-	
6%	SAP (XET)	SAPG.DE	106.34	d-	-	uo	
22%	SCHNEIDER ELECTRIC	SCHN.PA	73.06	+	-	-	
0%	SIEMENS (XET)	SIEGn.DE	88.62	-	-	-	Likely to test long-term support at 86.50 / 86.
17%	SOCIETE GENERALE	SOGN.PA	21.79	-	o	-	
0%	TELEFONICA	TEF.MC	6.25	-	-	-	
0%	TOTAL	TOTF.PA	43.23	-	-	-	
6%	WFD UNIBAIL RODAMCO STA	URW.AS	127.00	-	-	o	
6%	UNILEVER	UNA.AS	51.30	-	-	uo	
100%	VINCI	SGEF.PA	94.00	+	uu+	uu+	Weak upgradings. Sell signals if the supports at 92 and 88 are broken.
94%	VIVENDI	VIV.PA	26.05	u+	uu+	uu+	
11%	VOLKSWAGEN PREF. (XET)	VOWG_p.DE	140.96	o	-	-	Likely to fall to long-term support at 135.

Adidas – monthly chart (left) and 240-minute chart (right)

Adidas will turn down long term if 251 / 248 is broken.
Clearly, I would take profits here.



S&P 200 stocks – listed according to the Score (range from 100% to 0%, 40%-60% is neutral)

100%	AMERICAN TOWER	AMT
100%	AMGEN	AMGN.O
100%	AT&T	T
100%	BOOKING HOLDINGS	BKNG.O
100%	CROWN CASTLE INTL.	CCI
100%	ECOLAB	ECL
100%	EQUINIX REIT	EQIX.O
100%	MOODY'S	MCO
100%	NEXTERA ENERGY	NEE
100%	NORTHROP GRUMMAN	NOC
100%	PROCTER & GAMBLE	PG
100%	PUBLIC STORAGE	PSA
100%	S&P GLOBAL	SPGI.K
100%	SOUTHERN	SO
100%	STRYKER	SYK
100%	WELLTOWER	WELL.K
100%	ZOETIS	ZTS
94%	BAXTER INTL.	BAX
94%	EDWARDS LIFESCIENCE	EW
94%	FISERV	FISV.O
94%	SHERWIN-WILLIAMS	SHW
94%	YUM! BRANDS	YUM
89%	ADVANCED MICRO DEV	AMD.O
89%	CVS HEALTH	CVS
89%	DUKE ENERGY	DUK
89%	HUMANA	HUM
89%	MERCK & COMPANY	MRK
89%	ONEOK	OKE
89%	RAYTHEON 'B'	RTN
89%	STARBUCKS	SBUX.O
89%	UNITED PARCEL SER.'B'	UPS
89%	VERTEX PHARMS.	VRTX.O
83%	AMER.ELEC.PWR.	AEP
83%	CHUBB	CB
83%	CME GROUP	CME.O
83%	GENERAL MILLS	GIS
83%	INTERCONTINENTAL EX	ICE
83%	JOHNSON CONTROLS I	JCI
83%	KIMBERLY-CLARK	KMB
83%	LAM RESEARCH	LRGX.O
83%	LOCKHEED MARTIN	LMT
83%	MCDONALDS	MCD
83%	TEXAS INSTRUMENTS	TXN.O
83%	WASTE MANAGEMENT	WM
78%	AIR PRDS.& CHEMS.	APD
78%	BRISTOL MYERS SQUIB	BMJ
78%	COCA COLA	KO
78%	PROLOGIS	PLD
72%	ALLERGAN	AGN
72%	ALPHABET 'C'	GOOG.O

72%	CELGENE	CELG.O
72%	FIDELITY NAT.INFO.SVS	FIS
72%	SYSCO	SY
67%	APPLIED MATS.	AMAT.O
67%	EBAY	EBAY.O
67%	ELI LILLY	LLY
67%	GENERAL DYNAMICS	GD
67%	GENERAL MOTORS	GM
67%	IQVIA HOLDINGS	IQV
67%	MEDTRONIC	MDT
67%	MICRON TECHNOLOGY	MU.O
61%	AUTOMATIC DATA PRO	ADP.O
61%	MONDELEZ INTERNATI	MDLZ.O
61%	PHILIP MORRIS INTL.	PM
61%	SEMPRA EN.	SRE
56%	ACTIVISION BLIZZARD	ATVI.O
56%	APPLE	AAPL.O
56%	BECTON DICKINSON	BDX
56%	BOSTON SCIENTIFIC	BSX
56%	INTUIT	INTU.O
56%	PHILLIPS 66	PSX
56%	ROSS STORES	ROST.O
50%	ABBOTT LABORATORIE	ABT
50%	ACCENTURE CLASS A	ACN
50%	ALLSTATE ORD SHS	ALL
50%	AMERICAN EXPRESS	AXP
50%	AMERICAN INTL.GP.	AIG
50%	CIGNA	CI
50%	COSTCO WHOLESALE	COST.O
50%	DELTA AIR LINES	DAL
50%	MASTERCARD	MA
50%	MICROSOFT	MSFT.O
50%	VISA 'A'	V
44%	ALLIANCE DATA SYSTE	ADS
44%	CHEVRON	CVX
39%	ANALOG DEVICES	ADI.O
39%	CONSTELLATION BRAN	STZ
39%	DOLLAR GENERAL	DG
33%	AON CLASS A	AON
33%	DANAHER	DHR
33%	ELECTRONIC ARTS	EA.O
33%	ESTEE LAUDER COS.'A'	EL
33%	HOME DEPOT	HD
33%	LINDE	LIN
33%	MARSH & MCLENNAN	MMC
28%	AFLAC	AFL
28%	BROADCOM	AVGO.O
28%	KINDER MORGAN	KMI
28%	PEPSICO	PEP.O
28%	PROGRESSIVE OHIO	PGR

28%	ROPER TECHNOLOGIES	ROP
28%	TRAVELERS COS.	TRV
22%	ADOBE (NAS)	ADBE.O
22%	CHARTER COMMS.CL.A	CHTR.O
22%	COLGATE-PALM.	CL
22%	COMCAST A	CMCSA.O
22%	FACEBOOK CLASS A	FB.O
22%	GOLDMAN SACHS GP.	GS
22%	HONEYWELL INTL.	HON
22%	ILLINOIS TOOL WORKS	ITW
22%	MARRIOTT INTL.'A'	MAR.O
22%	PAYCHEX	PAYX.O
22%	QUALCOMM	QCOM.O
22%	TE CONNECTIVITY	TEL
22%	US BANCORP	USB
22%	WALMART	WMT
22%	WALT DISNEY	DIS
17%	3M	MMM
17%	BANK OF NEW YORK M	BK
17%	BIOPEN	BIIB.O
17%	COGNIZANT TECH.SLT	CTSH.O
17%	FEDEX	FDX
17%	FORD MOTOR	F
17%	INTEL	INTC.O
17%	INTUITIVE SURGICAL	ISRG.O
17%	JOHNSON & JOHNSON	JNJ
17%	LOWE'S COMPANIES	LOW
17%	NVIDIA	NVDA.O
17%	OCCIDENTAL PTL.	OXY
17%	REGENERON PHARMS.	REGN.O
17%	VALERO ENERGY	VLO
17%	WALGREENS BOOTS AL	WBA.O
17%	XILINX	XLNX.O
11%	ANTHEM	ANTM.K
11%	BLACKROCK	BLK
11%	CITIGROUP	C
11%	GENERAL ELECTRIC	GE
11%	INTERNATIONAL BUS.M	IBM
11%	METLIFE	MET
11%	MORGAN STANLEY	MS
11%	PNC FINL.SVS.GP.	PNC
11%	TARGET	TGT
6%	ABBVIE	ABBV.K
6%	ALEXION PHARMS.	ALXN.O
6%	BOEING	BA
6%	CAMECO (NYS)	CCJ
6%	CSX	CSX.O
6%	DOMINION ENERGY	D
6%	EXELON	EXC
6%	ILLUMINA	ILMN.O

6%	NETFLIX	NFLX.O
6%	O REILLY AUTOMOTIVE	ORLY.O
6%	PUB.SER.ENTER.GP.	PEG
6%	REGENCY CENTERS	REG.O
6%	VERIZON COMMUNICAT	VZ
6%	WILLIAMS	WMB
0%	ALTRIA GROUP	MO
0%	AMAZON.COM	AMZN.O
0%	AMPHENOL 'A'	APH
0%	AUTODESK	ADSK.O
0%	BANK OF AMERICA	BAC
0%	BB&T	BBT
0%	BERKSHIRE HATHAWAY	BRKb
0%	CATERPILLAR	CAT
0%	CHARLES SCHWAB	SCHW.K
0%	CISCO SYSTEMS	CSCO.O
0%	CONOCOPHILLIPS	COP
0%	DEERE	DE
0%	DOVER	DOV
0%	DOW CHEMICAL	DOW
0%	EATON	ETN
0%	EMERSON ELECTRIC	EMR
0%	EOG RES.	EOG
0%	EXXON MOBIL	XOM
0%	FORTIVE	FTV
0%	GILEAD SCIENCES	GILD.O
0%	HCA HEALTHCARE	HCA
0%	HP	HPQ
0%	JP MORGAN CHASE & C	JPM
0%	KRAFT HEINZ	KHC.O
0%	LYONDELLBASELL IND	LYB
0%	MARATHON PETROLEU	MPC
0%	MONSTER BEVERAGE	MNST.O
0%	NIKE 'B'	NKE
0%	NORFOLK SOUTHERN	NSC
0%	ORACLE	ORCL.K
0%	PAYPAL HOLDINGS	PYPL.O
0%	PFIZER	PFE
0%	PRUDENTIAL FINL.	PRU
0%	SALESFORCE.COM	CRM
0%	SCHLUMBERGER	SLB
0%	SIMON PROPERTY GRO	SPG
0%	SOUTHWEST AIRLINES	LUV
0%	TJX	TJX
0%	TRANSOCEAN	RIG
0%	UNION PACIFIC	UNP
0%	UNITED TECHNOLOGIE	UTX
0%	UNITEDHEALTH GROU	UNH
0%	V F	VFC
0%	WELLS FARGO & CO	WFC

S&P 200 stocks – listed alphabetically (A-HP)

SCORE	COMPANY	RIC	PRICE	LT	MT	ST
17%	3M	MMM	162.10	-	o	-
50%	ABBOTT LABORATORIE	ABT	84.66	+	do	-
6%	ABBVIE	ABBV.K	64.53	-	-	o
50%	ACCENTURE CLASS A	ACN	190.00	+	uo	-
56%	ACTIVISION BLIZZARD	ATVI.O	47.08	u+	u+	-
22%	ADOBE (NAS)	ADBE.O	288.65	u+	-	-
89%	ADVANCED MICRO DEV	AMD.O	32.43	u+	uu+	uu+
28%	AFLAC	AFL	52.32	+	-	uo
78%	AIR PRDS.& CHEMS.	APD	227.13	+	uu+	uu+
6%	ALEXION PHARMS.	ALXN.O	108.69	-	-	uo
72%	ALLERGAN	AGN	158.65	+	+	o
44%	ALLIANCE DATA SYSTE	ADS	150.00	o	+	-
50%	ALLSTATE ORD SHS	ALL	102.85	+	o	-
72%	ALPHABET 'C'	GOOG.O	1'174.71	u+	+	-
0%	ALTRIA GROUP	MO	45.98	-	-	-
0%	AMAZON.COM	AMZN.O	1'784.92	-	-	-
83%	AMER.ELEC.PWR.	AEP	90.43	+	uu+	uu+
50%	AMERICAN EXPRESS	AXP	123.95	+	uo	-
50%	AMERICAN INTL.GP.	AIG	55.08	+	uo	-
100%	AMERICAN TOWER	AMT	222.22	+	+	+
100%	AMGEN	AMGN.O	205.78	u+	+	+
0%	AMPHENOL 'A'	APH	86.07	-	-	-
39%	ANALOG DEVICES	ADI.O	108.96	u+	o	-
11%	ANTHEM	ANTM.K	282.00	o	d-	-
33%	AON CLASS A	AON	186.25	+	-	-
56%	APPLE	AAPL.O	200.48	u+	uu+	-
67%	APPLIED MATS.	AMAT.O	46.46	+	u+	-
100%	AT&T	T	34.48	+	+	u+
0%	AUTODESK	ADSK.O	148.87	-	-	-
61%	AUTOMATIC DATA PRO	ADP.O	165.87	u+	uu+	uo
0%	BANK OF AMERICA	BAC	27.64	d-	-	-
17%	BANK OF NEW YORK M	BK	44.38	-	do	-
94%	BAXTER INTL.	BAX	85.60	+	+	uu+
0%	BB&T	BBT	46.66	d-	-	-
56%	BECTON DICKINSON	BDX	249.16	uu+	uu+	-
0%	BERKSHIRE HATHAWAY	BRKb	197.20	-	-	-
17%	BIOPEN	BIIB.O	230.96	d-	do	-
11%	BLACKROCK	BLK	416.44	o	-	-
6%	BOEING	BA	332.94	-	-	uo
100%	BOOKING HOLDINGS	BKNG.O	1'916.89	uu+	uu+	uu+
56%	BOSTON SCIENTIFIC	BSX	42.33	+	+	-
78%	BRISTOL MYERS SQUIB	BMY	46.51	uo	u+	+
28%	BROADCOM	AVGO.O	275.64	uo	uo	-
6%	CAMECO (NYS)	CCJ	8.59	-	-	uo
0%	CATERPILLAR	CAT	116.72	-	-	-
72%	CELGENE	CELG.O	94.07	+	uu+	+
0%	CHARLES SCHWAB	SCHW.K	36.41	-	-	-
22%	CHARTER COMMS.CL.A	CHTR.O	376.28	+	-	-
44%	CHEVRON	CVX	121.55	uu+	uo	uo
83%	CHUBB	CB	157.04	+	uu+	uu+

SCORE	COMPANY	RIC	PRICE	LT	MT	ST
50%	CIGNA	CI	165.61	uo	u+	uo
0%	CISCO SYSTEMS	CSCO.O	51.54	-	-	-
11%	CITIGROUP	C	64.24	o	-	-
83%	CME GROUP	CME.O	212.25	+	+	u+
78%	COCA COLA	KO	53.20	+	u+	uu+
17%	COGNIZANT TECH.SLTI	CTSH.O	61.17	-	o	-
22%	COLGATE-PALM.	CL	70.73	u+	-	-
22%	COMCAST A	CMCSA.O	42.46	+	-	-
0%	CONOCOPHILLIPS	COP	53.12	-	-	-
39%	CONSTELLATION BRAN	STZ	193.05	+	uo	-
50%	COSTCO WHOLESALE	COST.O	271.31	+	o	-
100%	CROWN CASTLE INTL.	CCI	141.50	+	+	+
6%	CSX	CSX.O	65.83	-	-	uo
89%	CVS HEALTH	CVS	58.75	u+	u+	uu+
33%	DANAHER	DHR	138.41	+	-	-
0%	DEERE	DE	147.05	-	d-	-
50%	DELTA AIR LINES	DAL	58.66	+	o	-
39%	DOLLAR GENERAL	DG	134.94	+	-	uo
6%	DOMINION ENERGY	D	74.37	d-	-	o
0%	DOVER	DOV	90.16	-	-	-
0%	DOW CHEMICAL	DOW	45.69	-	-	-
89%	DUKE ENERGY	DUK	89.50	uu+	u+	u+
0%	EATON	ETN	77.95	-	-	-
67%	EBAY	EBAY.O	39.74	+	uu+	-
100%	ECOLAB	ECL	204.87	+	u+	uu+
94%	EDWARDS LIFESCIENCE	EW	215.89	+	+	+
33%	ELECTRONIC ARTS	EA.O	91.77	-	uo	u+
67%	ELI LILLY	LLY	113.60	-	u+	u+
0%	EMERSON ELECTRIC	EMR	58.29	-	-	-
0%	EOG RES.	EOG	77.92	-	-	-
100%	EQUINIX REIT	EQIX.O	553.30	+	+	+
33%	ESTEE LAUDER COS.'A'	EL	177.72	+	-	-
6%	EXELON	EXC	45.20	-	-	uo
0%	EXXON MOBIL	XOM	69.63	-	-	-
22%	FACEBOOK CLASS A	FB.O	185.37	+	-	-
17%	FEDEX	FDX	158.81	-	uo	-
72%	FIDELITY NAT.INFO.SV	FIS	132.47	+	u+	uo
94%	FISERV	FISV.O	104.21	+	+	+
17%	FORD MOTOR	F	9.29	o	-	uo
0%	FORTIVE	FTV	69.07	-	-	-
67%	GENERAL DYNAMICS	GD	181.35	+	uu+	-
11%	GENERAL ELECTRIC	GE	9.05	o	-	-
83%	GENERAL MILLS	GIS	54.27	+	u+	u+
67%	GENERAL MOTORS	GM	38.86	+	+	-
0%	GILEAD SCIENCES	GILD.O	63.98	-	-	-
22%	GOLDMAN SACHS GP.	GS	201.52	+	-	-
0%	HCA HEALTHCARE	HCA	125.80	-	-	-
33%	HOME DEPOT	HD	207.01	+	-	-
22%	HONEYWELL INTL.	HON	164.96	uu+	-	-
0%	HP	HPQ	18.94	-	-	-

S&P 200 stocks – listed alphabetically (Humana-Z)

SCORE	COMPANY	RIC	PRICE	LT	MT	ST
89%	HUMANA	HUM	295.50	+	+	+
22%	ILLINOIS TOOL WORKS	ITW	147.86	u+	-	-
6%	ILLUMINA	ILMN.O	290.34	-	-	o
17%	INTEL	INTC.O	45.60	-	o	-
83%	INTERCONTINENTAL EX	ICE	90.59	+	u+	uu+
11%	INTERNATIONAL BUS.M	IBM	134.12	do	dd-	-
56%	INTUIT	INTU.O	272.65	+	u+	-
17%	INTUITIVE SURGICAL	ISRG.O	509.88	-	o	-
67%	IQVIA HOLDINGS	IQV	155.43	+	+	-
17%	JOHNSON & JOHNSON	JNJ	131.93	-	-	u+
83%	JOHNSON CONTROLS I	JCI	41.85	+	+	uu+
0%	JP MORGAN CHASE & C	JPM	107.68	dd-	-	-
83%	KIMBERLY-CLARK	KMB	138.13	+	uu+	uu+
28%	KINDER MORGAN	KMI	20.34	uu+	-	uo
0%	KRAFT HEINZ	KHC.O	26.29	-	dd-	d-
83%	LAM RESEARCH	LRCX.O	196.31	+	+	-
33%	LINDE	LIN	192.20	+	-	-
83%	LOCKHEED MARTIN	LMT	377.00	+	u+	u+
17%	LOWE'S COMPANIES	LOW	96.08	-	uo	-
0%	LYONDELLBASELL IND	LYB	72.93	-	-	-
0%	MARATHON PETROLEU	MPC	46.41	-	d-	-
22%	MARRIOTT INTL.'A'	MAR.O	130.01	+	-	-
33%	MARSH & MCLENNAN	MMC	97.66	+	-	-
50%	MASTERCARD	MA	270.00	u+	uo	-
83%	MCDONALDS	MCD	217.16	+	u+	uu+
67%	MEDTRONIC	MDT	101.00	+	+	-
89%	MERCK & COMPANY	MRK	85.73	+	+	+
11%	METLIFE	MET	45.89	o	-	-
67%	MICRON TECHNOLOGY	MU.O	42.13	+	+	-
50%	MICROSOFT	MSFT.O	135.79	+	uo	-
61%	MONDELEZ INTERNATI	MDLZ.O	54.25	+	uo	uu+
0%	MONSTER BEVERAGE	MNST.O	56.48	d-	-	-
100%	MOODY'S	MCO	212.93	+	+	uu+
11%	MORGAN STANLEY	MS	40.36	o	-	-
6%	NETFLIX	NFLX.O	310.83	-	-	o
100%	NEXTERA ENERGY	NEE	215.45	+	u+	uu+
0%	NIKE 'B'	NKE	81.65	-	-	-
0%	NORFOLK SOUTHERN	NSC	174.53	-	-	-
100%	NORTHROP GRUMMAN	NOC	373.21	+	+	+
17%	NVIDIA	NVDA.O	151.45	-	o	-
6%	O REILLY AUTOMOTIVE	ORLY.O	370.84	-	-	uo
17%	OCCIDENTAL PTL.	OXY	44.99	-	o	-
89%	ONEOK	OKE	69.27	u+	+	uu+
0%	ORACLE	ORCL.K	53.25	d-	-	-
22%	PAYCHEX	PAYX.O	82.80	uu+	-	-
0%	PAYPAL HOLDINGS	PYPL.O	102.72	-	-	-
28%	PEPSICO	PEP.O	128.35	+	-	uo
0%	PFIZER	PFE	35.39	-	-	-
61%	PHILIP MORRIS INTL.	PM	82.38	o	u+	-
56%	PHILLIPS 66	PSX	98.31	+	+	-

SCORE	COMPANY	RIC	PRICE	LT	MT	ST
11%	PNC FINL.SVS.GP.	PNC	128.64	do	-	-
100%	PROCTER & GAMBLE	PG	116.03	+	u+	uu+
28%	PROGRESSIVE OHIO	PGR	79.02	u+	-	uo
78%	PROLOGIS	PLD	81.69	+	uu+	uu+
0%	PRUDENTIAL FINL.	PRU	82.72	-	-	-
6%	PUB.SER. ENTER.GP.	PEG	57.23	-	-	uo
100%	PUBLIC STORAGE	PSA	258.69	+	+	+
22%	QUALCOMM	QCOM.O	69.80	+	-	-
89%	RAYTHEON 'B'	RTN	183.54	+	+	uo
6%	REGENCY CENTERS	REG.O	68.14	-	-	o
17%	REGENERON PHARMS.	REGN.O	295.87	-	o	-
28%	ROPER TECHNOLOGIES	ROP	352.27	+	-	uo
56%	ROSS STORES	ROST.O	103.28	+	u+	-
100%	S&P GLOBAL	SPGI.K	254.10	+	+	u+
0%	SALESFORCE.COM	CRM	140.72	-	-	-
0%	SCHLUMBERGER	SLB	34.27	-	-	-
61%	SEMPRA EN.	SRE	137.14	+	uo	uu+
94%	SHERWIN-WILLIAMS	SHW	515.73	+	+	+
0%	SIMON PROPERTY GRO	SPG	153.04	-	-	-
100%	SOUTHERN	SO	58.68	+	u+	+
0%	SOUTHWEST AIRLINES	LUV	50.05	-	-	-
89%	STARBUCKS	SBUX.O	94.91	+	+	do
100%	STRYKER	SYK	217.19	+	+	uu+
72%	SYSCO	SYY	72.19	uu+	uu+	uu+
11%	TARGET	TGT	82.03	o	-	-
22%	TE CONNECTIVITY	TEL	88.17	+	-	-
83%	TEXAS INSTRUMENTS	TXN.O	120.08	+	+	-
28%	TRAVELERS COS.	TRV	146.30	+	-	uo
0%	TJX	TJX	51.90	-	-	-
0%	TRANSOCEAN	RIG	4.34	-	-	-
0%	UNION PACIFIC	UNP	165.67	-	-	-
89%	UNITED PARCEL SER.'B'	UPS	114.89	+	+	do
0%	UNITED TECHNOLOGIE	UTX	128.02	-	-	-
0%	UNITEDHEALTH GROU	UNH	243.20	d-	-	-
22%	US BANCORP	USB	52.24	+	-	-
0%	V F	VFC	81.93	-	-	-
17%	VALERO ENERGY	VLO	77.15	-	uo	-
6%	VERIZON COMMUNICAT	VZ	55.69	-	-	uo
89%	VERTEX PHARMS.	VRTX.O	179.84	u+	+	+
50%	VISA 'A'	V	176.34	+	uo	-
17%	WALGREENS BOOTS AL	WBA.O	52.00	-	o	-
22%	WALMART	WMT	105.22	+	-	-
22%	WALT DISNEY	DIS	135.75	+	-	-
83%	WASTE MANAGEMENT	WM	117.73	+	uu+	uu+
0%	WELLS FARGO & CO	WFC	45.43	-	d-	-
100%	WELLTOWER	WELL.K	87.99	+	+	+
6%	WILLIAMS	WMB	23.70	-	-	uo
17%	XILINX	XLNX.O	103.18	-	o	-
94%	YUM! BRANDS	YUM	116.54	+	+	+
100%	ZOETIS	ZTS	123.96	+	u+	uu+

Dow Jones 30 Industrial Index constituent stocks

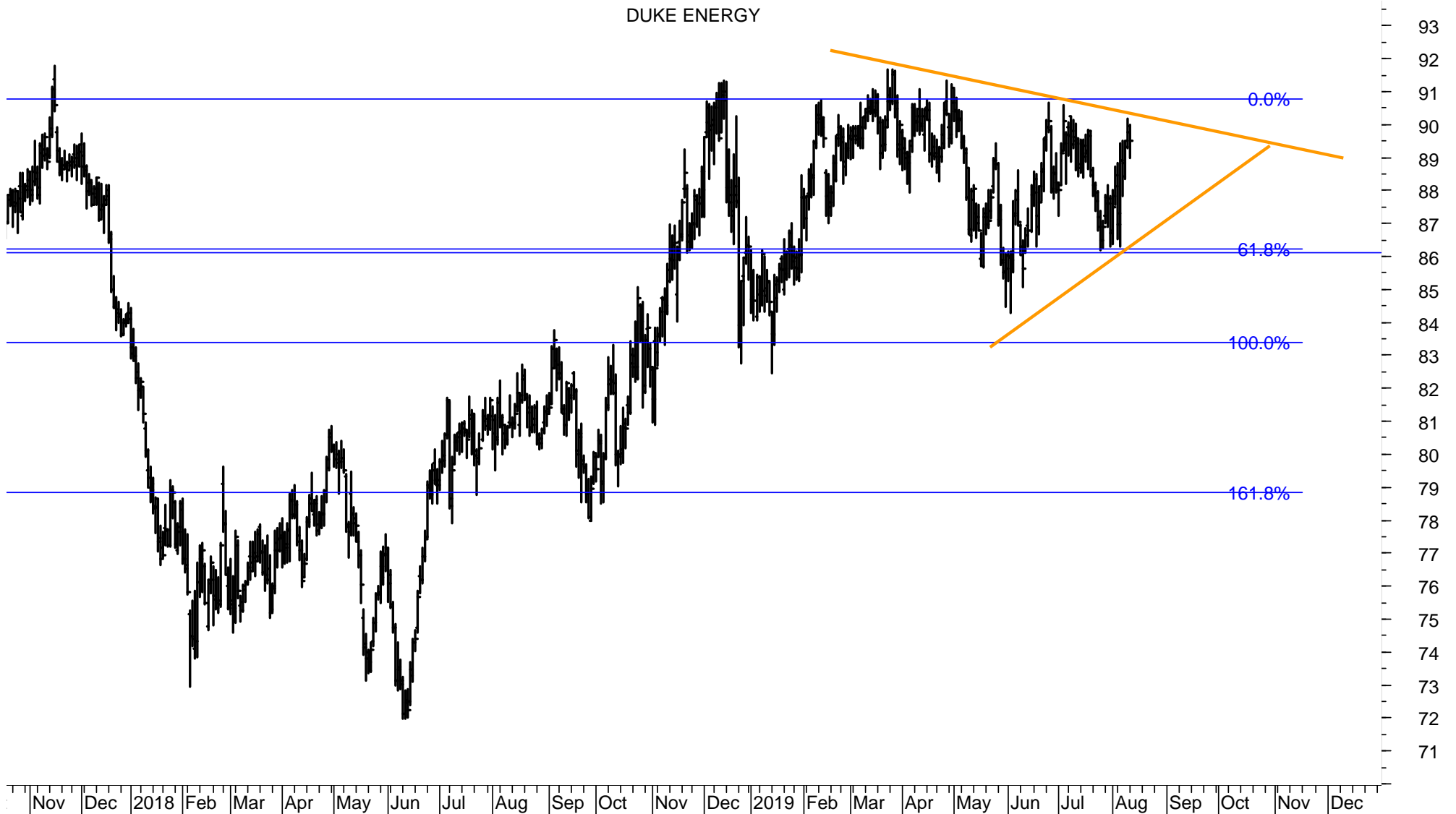
SCORE	COMPANY	RIC	PRICE	LT	MT	ST	COMMENT	DATE BOUGHT	PRICE BOUGHT	PROFIT or LOSS
17%	3M	MMM	162.10	-	O	-				
50%	AMERICAN EXPRESS	AXP	123.95	+	uO	-	Supports are 123.10, 121 and 117.50 / 116.			
56%	APPLE	AAPL.O	200.48	u+	uu+	-	Sell the position if 189 is broken. Next supports are 186, 172 and 165.	27.06.2019	201.1	-0.31%
6%	BOEING	BA	332.94	-	-	uO				
0%	CATERPILLAR	CAT	116.72	-	-	-				
44%	CHEVRON	CVX	121.55	uu+	uO	uO	Sell the position if 117 is broken. Next support is 113.50 and 105.	11.06.2019	123.2	-1.34%
0%	CISCO SYSTEMS	CSCO.O	51.54	-	-	-				
78%	COCA COLA	KO	53.20	+	u+	uu+	TOOK PROFIT of 7.7%. Next sell signal if 51.60 and 50.30 is broken.			
0%	DOW CHEMICAL	DOW	45.69	-	-	-				
0%	EXXON MOBIL	XOM	69.63	-	-	-	Sell signal if 69 is broken. Support at 65 or 57.			
22%	GOLDMAN SACHS GP.	GS	201.52	+	-	-				
33%	HOME DEPOT	HD	207.01	+	-	-	Sell signal if 204 is broken. Next support is 195.			
17%	INTEL	INTC.O	45.60	-	O	-	Breaking support at 46. Next support is 42.80.			
11%	INTERNATIONAL BUS.M	IBM	134.12	do	dd-	-				
17%	JOHNSON & JOHNSON	JNJ	131.93	-	-	u+				
0%	JP MORGAN CHASE & C	JPM	107.68	dd-	-	-	Supports are 104.50 and 97.			
83%	MCDONALDS	MCD	217.16	+	u+	uu+	TAKE PROFIT of 19%. Supports 214 and 209.50.	13.03.2019	181.85	19.42%
89%	MERCK & COMPANY	MRK	85.73	+	+	+	A break of 82 would signal 80 or 76.50.			
50%	MICROSOFT	MSFT.O	135.79	+	uO	-	TAKE PROFIT of 14%. Supports 135.20, 134.80, 132.60, 130 and resistance at 140.	21.03.2019	119.1	14.01%
0%	NIKE 'B'	NKE	81.65	-	-	-	Falling to the long-term support at 77, a break of which will signal 69.			
0%	PFIZER	PFE	35.39	-	-	-	Broke support at 36.50. Resistance is 35.65.			
100%	PROCTER & GAMBLE	PG	116.03	+	u+	uu+	TOOK PROFIT of 18%			
28%	TRAVELERS COS.	TRV	146.30	+	-	uO	Next sell signal if 141 is broken. Support is 135 and 125.			
0%	UNITED TECHNOLOGIE	UTX	128.02	-	-	-	Major supports are 123.50, 118 / 116 and 110.			
0%	UNITEDHEALTH GROUP	UNH	243.20	d-	-	-				
6%	VERIZON COMMUNICAT	VZ	55.69	-	-	uO				
50%	VISA 'A'	V	176.34	+	uO	-	Failed to break the major resistance at 180. Supports are 175, 174, 172 and 166.			
17%	WALGREENS BOOTS AL	WBA.O	52.00	-	O	-				
22%	WALMART	WMT	105.22	+	-	-	Supports are 105 and 102.50.			
22%	WALT DISNEY	DIS	135.75	+	-	-	Supports are 129.50 and 118.			

Other US stocks

SCORE	COMPANY	RIC	PRICE	LT	MT	ST	COMMENT	DATE BOUGHT	PRICE BOUGHT	PROFIT or LOSS
50%	AMERICAN INTL.GP.	AIG	55.08	+	uO	-	Sell the position if 51.70 is broken.	01.05.2019	47.8	15.23%
39%	ANALOG DEVICES	ADI.O	108.96	u+	O	-	Sell the position if 106 is broken.	02.07.2019	115	-5.25%
56%	BECTON DICKINSON	BDX	249.16	uu+	uu+	-	Sell the position if 235 is broken.	25.06.2019	252.1	-1.17%
22%	COLGATE-PALM.	CL	70.73	u+	-	-	Sell the position if 68.30 is broken.	30.04.2019	72.1	-1.90%
50%	DELTA AIR LINES	DAL	58.66	+	O	-	Sell the position if 56.50 is broken.	02.07.2019	58.7	-0.07%
89%	DUKE ENERGY	DUK	89.50	uu+	u+	u+	Sell the position if 88.90 is broken.	14.06.2019	87.95	1.76%
67%	EBAY	EBAY.O	39.74	+	uu+	-	Sell the position if 38.50 is broken.	13.06.2019	39.25	1.25%
72%	FIDELITY NAT.INFO.SV	FIS	132.47	+	u+	uO	TOOK PROFIT of 15%.			
67%	GENERAL DYNAMICS	GD	181.35	+	uu+	-	Sell the position if 180.20 is broken.	26.06.2019	179.65	0.95%
67%	MEDTRONIC	MDT	101.00	+	+	-	Sell the position if 100.60 is broken.	11.06.2019	97.8	3.27%
11%	METLIFE	MET	45.89	O	-	-	Sell the position if 45 is broken.	02.05.2019	47.1	-2.57%
67%	MICRON TECHNOLOGY	MU.O	42.13	+	+	-	Sell the position if 41.55 is broken.	10.07.2019	43.1	-2.25%
100%	NORTHROP GRUMMAN	NOC	373.21	+	+	+	Sell the position if 333 is broken.	28.05.2019	312.1	19.58%
61%	PHILIP MORRIS INTL.	PM	82.38	O	u+	-	Sell the position if 78 is broken.	25.06.2019	77.83	5.85%
56%	PHILLIPS 66	PSX	98.31	+	+	-	Sell the position if 94 is broken.	02.07.2019	95.6	2.83%
11%	PNC FINL.SVS.GP.	PNC	128.64	do	-	-	Sell the position if 132 is broken.	30.04.2019	137	-6.10%
83%	TEXAS INSTRUMENTS	TXN.O	120.08	+	+	-	Sell the position if 114.50 is broken.	27.06.2019	115.15	4.28%
0%	TJX	TJX	51.90	-	-	-	Sell the position if 50 is broken.	09.07.2019	55	-5.64%

DUKE ENERGY – daily chart

The pattern from November can still be labeled as a Triangle and a break to new highs is still likely to unfold. But, it must hold above 86 or it would signal 83.50 / 83 or 78.50.



TRANSOCEAN – daily chart

Tansocean is falling to the make-it-or-break-it support range between 4.10 to 3.50.



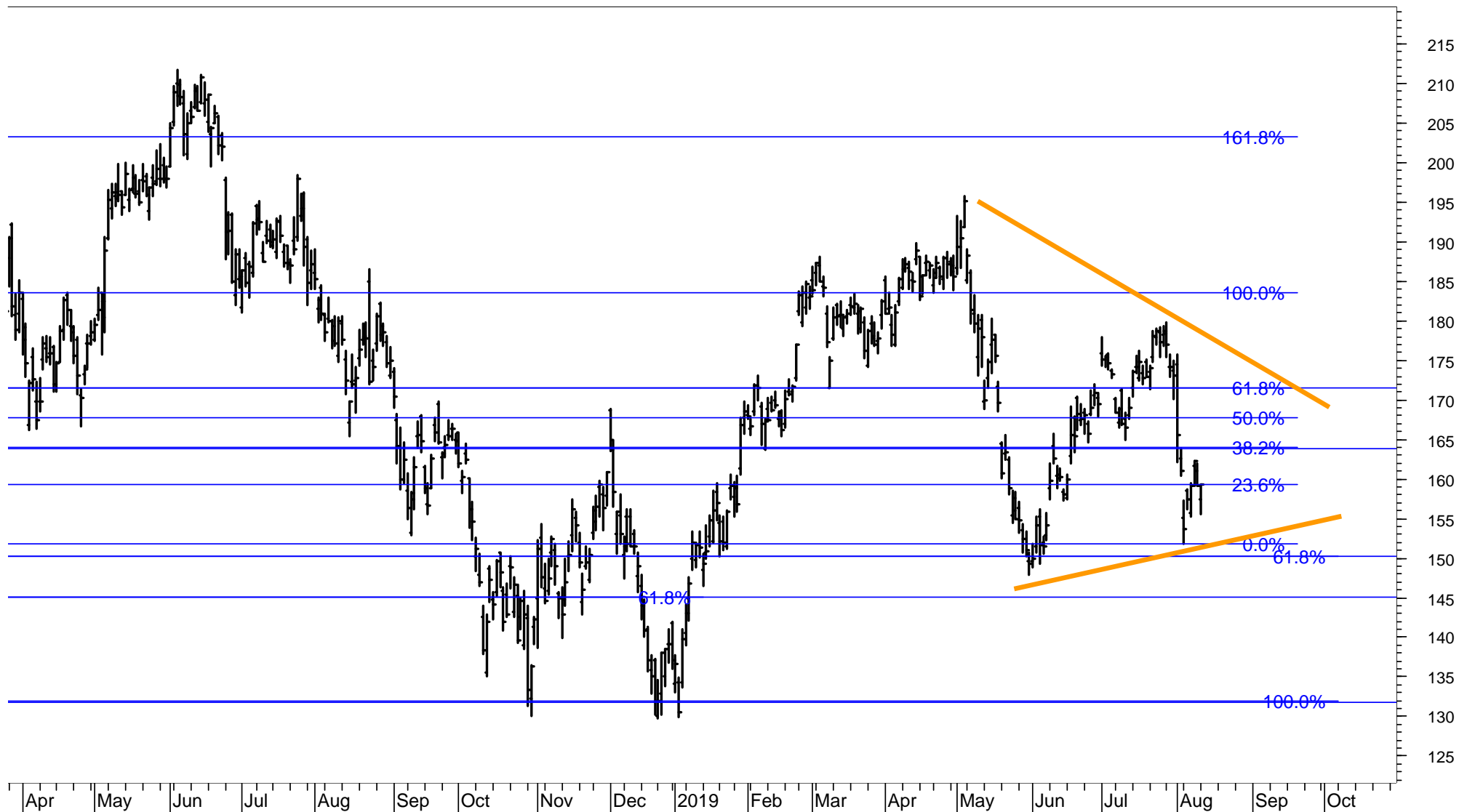
JAPAC 100 stocks – listed according to the Score (range from 100% to 0%, 40%-60% is neutral)

SCORE	COMPANY	RIC	PRICE	LT	MT	ST
100%	NCSOFT/d	036570.KS	522'000.00	+	+	+
100%	NTT DOCOMO/d	9437.T	2'620.50	+	+	uu+
100%	SEMEN INDONESIA/d	SMGR.JK	12'550.00	+	+	uu+
100%	TELKOM INDONESIA/d	TLKM.JK	4'260.00	+	+	uu+
100%	WOONGJIN COWAY/d	021240.KS	84'700.00	+	+	+
94%	NAVER/d	035420.KS	142'500.00	+	+	+
89%	HYUNDAI MOBIS/d	012330.KS	235'000.00	+	+	do
89%	KALBE FARMA TB/d	KLBF.JK	1'455.00	u+	u+	uu+
89%	SAMSUNG SDI/d	006400.KS	245'500.00	+	+	+
89%	SHIN-ETSU CHEM/d	4063.T	10'610.00	+	+	do
89%	SONY CORP/d	6758.T	5'973.00	+	u+	uu+
89%	TATA CONSULT/d	TCS.NS	2'216.55	+	+	+
83%	BHARTI AIRTEL/d	BRTI.NS	371.15	+	+	+
83%	INDOCEMENT T P/d	INTP.JK	21'600.00	+	+	-
83%	INFOSYS LTD/d	INFY.NS	776.15	+	+	u+
83%	KIA MOTORS/d	000270.KS	43'750.00	+	+	+
83%	SK HYNIX/d	000660.KS	74'500.00	+	+	-
78%	KT G/d	033780.KS	102'000.00	uo	uu+	uu+
78%	UNILEVER INDON/d	UNVR.JK	44'350.00	o	u+	uu+
67%	KAKAO/d	035720.KS	131'500.00	+	uo	uu+
67%	TAIWAN SEMICON/d	2330.TW	246.50	+	+	-
67%	TOYOTA MOTOR C/d	7203.T	6'790.00	+	+	-
61%	RECRUIT HOLDIN/d	6098.T	3'600.00	+	+	uo
50%	BANK RAKYAT IN/d	BBRI.JK	4'270.00	+	o	-
44%	S-OIL/d	010950.KS	85'100.00	o	+	-
39%	HYUNDAI GLOVIS/d	086280.KS	153'500.00	+	-	u+
39%	HYUNDAI MOTOR/d	005380.KS	129'000.00	u+	-	u+
39%	KOREA ZINC/d	010130.KS	442'000.00	o	uo	uu+
39%	NTT/d	9432.T	4'889.00	+	-	uo
33%	SAMSUNG BIOLOG/d	207940.KS	285'500.00	-	uo	uu+
33%	TAKEDA PHARM/d	4502.T	3'622.00	o	o	do
28%	ALIBABA GRP AD/d	BABA.K	0.00	uo	uo	-
28%	KOREA ELEC POW/d	015760.KS	24'950.00	do	do	d-
28%	SAMSUNG SDS/d	018260.KS	200'000.00	uo	o	-
28%	TENCENT/d	0700.HK	335.20	o	uo	-
22%	CHAROEN POKPHA/d	CPIN.JK	4'740.00	-	o	uo
22%	H M SAMPOERNA/d	HMSP.JK	2'870.00	-	uo	uo
22%	INDAH KIAT PUL/d	INKP.JK	6'800.00	-	o	uo
17%	BANK BNI TBK/d	BBNI.JK	7'925.00	o	-	uo
17%	HANMI PHARM/d	128940.KS	283'500.00	-	-	uu+
17%	HYUNDAI HEAVY /d	267250.KS	305'500.00	-	o	-
17%	LOTTE CHEMICAL/d	011170.KS	221'000.00	uo	-	uo
17%	MIRAE ASSET DW/d	006800.KS	7'360.00	o	-	uo
17%	MITSUB UFJ FG/d	8306.T	504.20	-	o	-
17%	MIZUHO FINANCI/d	8411.T	155.40	-	do	-
17%	NISSAN MOTOR C/d	7201.T	660.90	-	uo	-
17%	SAMSUNG C&T/d	028260.KS	88'500.00	-	o	-
17%	SAMSUNG EL-MEC/d	009150.KS	87'600.00	-	o	-
17%	SK INNOVATION/d	096770.KS	152'000.00	-	o	-
11%	BANK MANDIRI T/d	BMRI.JK	7'350.00	o	-	-

SCORE	COMPANY	RIC	PRICE	LT	MT	ST
11%	BANK OF CHINA/d	3988.HK	2.9600	uo	-	-
11%	FANUC LTD/d	6954.T	17'825.00	o	-	-
11%	FAST RETAILING/d	9983.T	62'800.00	o	-	-
11%	GS HOLDINGS/d	078930.KS	46'600.00	o	-	-
11%	HANON SYSTEMS/d	018880.KS	11'650.00	o	dd-	d-
11%	KANGWON LAND/d	035250.KS	29'550.00	o	dd-	dd-
11%	KDDI/d	9433.T	2'648.00	do	-	-
11%	LG CHEM/d	051910.KS	314'000.00	uo	-	-
11%	LG CORP/d	003550.KS	69'100.00	o	-	-
11%	LG ELECTRONICS/d	066570.KS	59'800.00	o	-	-
11%	NETMARBLE/d	251270.KS	84'600.00	-	-	u+
11%	SAMSUNG ELEC-1/d	005935.KS	35'500.00	o	-	-
11%	SAMSUNG ELECTR/d	005930.KS	43'000.00	o	-	-
6%	HYUNDAI ENG&CO/d	000720.KS	40'250.00	-	-	uo
6%	JAPAN POST HLD/d	6178.T	1'002.00	-	-	o
6%	KOREA SHIPBUIL/d	009540.KS	95'200.00	-	-	uo
6%	LG UPLUS/d	032640.KS	12'500.00	-	-	do
6%	RELIANCE/d	RELI.NS	1'284.80	-	-	uo
6%	SAMSUNG HEAVY/d	010140.KS	6'770.00	-	-	uo
6%	SK TELECOM/d	017670.KS	236'000.00	-	-	do
0%	AMOREPACIFIC/d	090430.KS	129'000.00	-	-	-
0%	ASTRA INTL TBK/d	ASII.JK	6'625.00	-	-	-
0%	CANON INC/d	7751.T	2'781.00	-	-	-
0%	CELLTRION HEAL/d	091990.KQ	40'400.00	-	-	-
0%	CELLTRION/d	068270.KS	153'000.00	-	-	-
0%	CENTRAL JAPAN /d	9022.T	20'975.00	-	-	-
0%	CNOOC/d	0883.HK	11.46	-	-	-
0%	DB INSURANCE/d	005830.KS	50'000.00	-	-	-
0%	E-MART/d	139480.KS	112'500.00	-	-	-
0%	GUDANG GARAM T/d	GGRM.JK	72'350.00	-	-	-
0%	HANA FINANCIAL/d	086790.KS	31'850.00	-	-	-
0%	HANKOOK TIR TE/d	161390.KS	28'350.00	-	-	-
0%	HONDA MOTOR/d	7267.T	2'482.00	-	-	-
0%	HYUNDAI STEEL/d	004020.KS	36'550.00	-	-	-
0%	IBK/d	024110.KS	12'150.00	-	-	-
0%	JAPAN TOBACCO/d	2914.T	2'296.00	-	-	-
0%	KAO CORPORATIO/d	4452.T	7'773.00	-	-	-
0%	KB FGI/d	105560.KS	38'250.00	-	-	-
0%	LG DISPLAY/d	034220.KS	12'650.00	-	-	-
0%	LG HOUSEHOLD/d	051900.KS	1'180'000.00	-	-	-
0%	LOTTE SHOPPING/d	023530.KS	125'500.00	-	-	-
0%	MITSUBISHI COR/d	8058.T	2'620.00	-	-	-
0%	POSCO/d	005490.KS	205'500.00	-	-	-
0%	SAMSUNG FIRE I/d	000810.KS	224'500.00	-	-	-
0%	SAMSUNG LIFE/d	032830.KS	67'900.00	-	-	-
0%	SHINHAN FINANC/d	055550.KS	40'400.00	d-	-	-
0%	SK HOLDINGS/d	034730.KS	193'500.00	-	-	-
0%	SMFG/d	8316.T	3'535.00	-	-	-
0%	SOFTBANK GROUP/d	9984.T	4'895.00	d-	dd-	-
0%	UNITED TRACTOR/d	UNTR.JK	21'375.00	-	-	-

ALIBABA

Alibaba could trigger a major sell signal if it breaks below 150 and again if it breaks below 145. Lower support is at 132 and 115 / 100.



SAMSUNG ELECTRONICS

Samsung is testing the support range between 43.4k and 42.5k. A break of this range will signal 40.8k or possibly 36.5k.
Resistance is at 45k and 46.4k.



TENCENT

Tencent is at risk of breaking the support at 325.
Lower supports are at 315, 295 and 260 / 240.



Disclaimer

Copyright © 2018 and 2019; FinChartOutlook GmbH, Rolf Bertschi, all rights reserved.

This Publication is designed for sophisticated money managers who are aware of the risk in securities investments and market forecasting. The analysis herein is based both on technical and cyclic readings and the recommendations represent the opinion of the Publisher, FinChartOutlook GmbH. Past performance does not imply or guarantee profitable results in the future. Before making specific investments, further investigation is recommended. Although the information contained in this Publication has been derived from sources which are believed to be reliable, they are not always necessarily complete and cannot be guaranteed. Neither the Publisher, FinChartOutlook GmbH, nor any of its employees, affiliates or subsidiaries shall have any liability for any loss, harm or other detriment which has been sustained by any natural person or entity that has relied on the information contained in this Publication. Any person or entity who does rely on any information contained in this Publication does so at his/her own risk and by doing so assumes all liability for any such loss, harm or other detriment. Employees of the Publisher may at times have positions in the securities referred to in this Publication and may make purchases or sales of these securities while the Publication is in circulation. An advisor / client relationship is not created by the distribution or delivery of this publication.

The information published and opinions expressed are provided by FinChartOutlook GmbH for personal use and for informational purposes only. The information is not intended to provide specific financial, investment, tax, legal or accounting advice for you, and is not intended to be relied upon in that regards. You should not act or rely on the information without professional assistance. Non information published in this Publication constitutes an offer or recommendation, to buy or sell any investment instruments, to effect any transactions, or to conclude any legal act of any kind whatsoever. FinChartOutlook GmbH disclaims, without intention, all liability for any loss or damage of any kind, including any direct, indirect or consequential damages, which might be incurred through the use of any information in this presentation. The entire content of this paper is subject to copyright with all rights reserved. You may save or print out a hard copy, provided that you do not remove any copyright or other proprietary notices. All property rights shall remain with FinChartOutlook GmbH. The content of this Publication may not be reproduced (in whole or in part), transmitted (by electronic means or otherwise), modified, linked into or used for any public or commercial purpose without the prior written permission of Rolf P. Bertschi, FinChartOutlook GmbH.

Sources

The charts in this publication are from Metastock and Datastream from Thomson Reuters Equis. All indicators and analyses are by Rolf Bertschi.

Explanations

For a more detailed explanation of the Trend and Momentum Models applied in this Chart Outlook, please see

www.chartoutlook.com

www.rolfbertschi.ch

E-Mail

rolf.bertschi@chartoutlook.ch

FinChartOutlook GmbH, Rolf P. Bertschi, Dörflistrasse 17, 8903 Birmensdorf ZH, Switzerland

Disclaimer

Copyright © 2018 and 2019; FinChartOutlook GmbH, Rolf Bertschi, all rights reserved.

This Publication is designed for sophisticated money managers who are aware of the risk in securities investments and market forecasting. The analysis herein is based both on technical and cyclic readings and the recommendations represent the opinion of the Publisher, FinChartOutlook GmbH. Past performance does not imply or guarantee profitable results in the future. Before making specific investments, further investigation is recommended. Although the information contained in this Publication has been derived from sources which are believed to be reliable, they are not always necessarily complete and cannot be guaranteed. Neither the Publisher, FinChartOutlook GmbH, nor any of its employees, affiliates or subsidiaries shall have any liability for any loss, harm or other detriment which has been sustained by any natural person or entity that has relied on the information contained in this Publication. Any person or entity who does rely on any information contained in this Publication does so at his/her own risk and by doing so assumes all liability for any such loss, harm or other detriment. Employees of the Publisher may at times have positions in the securities referred to in this Publication and may make purchases or sales of these securities while the Publication is in circulation. An advisor / client relationship is not created by the distribution or delivery of this publication.

The information published and opinions expressed are provided by FinChartOutlook GmbH for personal use and for informational purposes only. The information is not intended to provide specific financial, investment, tax, legal or accounting advice for you, and is not intended to be relied upon in that regards. You should not act or rely on the information without professional assistance. Non information published in this Publication constitutes an offer or recommendation, to buy or sell any investment instruments, to effect any transactions, or to conclude any legal act of any kind whatsoever. FinChartOutlook GmbH disclaims, without intention, all liability for any loss or damage of any kind, including any direct, indirect or consequential damages, which might be incurred through the use of any information in this presentation. The entire content of this paper is subject to copyright with all rights reserved. You may save or print out a hard copy, provided that you do not remove any copyright or other proprietary notices. All property rights shall remain with FinChartOutlook GmbH. The content of this Publication may not be reproduced (in whole or in part), transmitted (by electronic means or otherwise), modified, linked into or used for any public or commercial purpose without the prior written permission of Rolf P. Bertschi, FinChartOutlook GmbH.

Sources

The charts in this publication are from Metastock and Datastream from Thomson Reuters Equis. All indicators and analyses are by Rolf Bertschi.

Explanations

For a more detailed explanation of the Trend and Momentum Models applied in this Chart Outlook, please see

www.chartoutlook.com

www.rolfbertschi.ch

E-Mail

rolf.bertschi@chartoutlook.ch

FinChartOutlook GmbH, Rolf P. Bertschi, Dörflistrasse 17, 8903 Birmensdorf ZH, Switzerland