

A background image showing several financial charts and data tables on a screen, rendered in a dark blue, semi-transparent style. The charts include line graphs and candlestick patterns. A semi-transparent circular graphic is centered over the text.

# GLOBAL CHART OUTLOOK

20<sup>th</sup> August 2019  
Global Equities

# Swiss SPI 200 constituent stocks – listed according to the Score (range from 100% to 0%, 40%-60% is neutral)

100%	SWISS PRIME SITE	SPSN.S
100%	BVZ HOLDING AG	BVZN.S
100%	SWISSCOM N	SCMN.S
100%	ALLREAL HLD N	ALLN.S
100%	ZURICH INSURANCE	ZURN.S
100%	MOBIMO HLDG	MOBN.S
100%	ROCHE HOLDING AG	ROG.S
100%	HELVETIA HLDG	HELN.S
100%	BALOISE HLD N	BALN.S
100%	LONZA GRP AG N	LONN.S
100%	PSP CH PRPTY N	PSPN.S
100%	VAUDOISE VERS N	VAHN.S
100%	IMPLENIA N	IMPN.S
100%	PARTNERS GROUPAG	PGHN.S
100%	BELLEVUE GRP N	BBN.S
100%	DAETWYL I	DAE.S
100%	SWISS FIN&PROP	SFPN.S
100%	NESTLE SA	NESN.S
100%	MCH GROUP AG	MCHN.S
100%	SWISS RE N	SRENH.S
100%	ZUG ESTATE HLD	ZUGN.S
100%	GLARNER KB N	GLKBN.S
100%	CEMBRA MONEY BAN	CMBN.S
100%	INTERSHOP N	ISN.S
100%	INVESTIS N	IREN.S
100%	BQ CANT DU JURA	BCJ.S
100%	GALENICA	GALE.S
100%	VIFOR PHARMA	VIFN.S
94%	GR KTBK PS	GRKP.S
94%	VILLARS N	VILN.S
94%	WARTECK N	WARN.S
94%	GURIT I	GUR.S
94%	LINDT & SP PS	LISP.S
94%	INFICON N	IFCN.S
94%	EDISUN POWER	ESUN.S
89%	SIEGFRIED N	SFZN.S
89%	BFW LIEGENSCH N	BLIN.S
89%	ORIOR N	ORON.S
89%	SUNRISE N	SRCG.S
89%	ZEHNDER I	ZEHN.S
83%	VALORA N	VALN.S
83%	JUNGFRAUBAHN N	JFN.S
83%	SIG COMB GRP N	SIGNC.S
83%	PEACH PROP	PEAN.S
83%	BC GENEVE P	BCGE.S
83%	IDORSIA N	IDIA.S
83%	LANDIS GYR	LANDI.S
83%	LASTMINUTE ORD	LMN.S
78%	CPH CHEM&PAPER	CPHN.S
78%	O FUSSLIN	OFN.S
78%	AIRENIS SA	AIRE.S
78%	BASILEA PHARMA	BSLN.S
78%	BACHEM HOLD N	BANB.S

78%	SONOVA H AG	SOON.S
78%	ROMANDE ENERGIE	HREN.S
78%	ALCON N	ALCC.S
78%	PLAZZA AG	PLANZ.S
78%	CEVA LOGISTICS N	CEVAL.S
72%	APG SGA	APGN.S
72%	HIAG IMMOBILIEN	HIAG.S
67%	CHAM GROUP AG	CHAMA.S
67%	GAVAZZI CARLO I	GAV.S
67%	ST GALLER KB N	SGKN.S
67%	AEVIS HOLDING SA	AEVS.S
67%	GRP MINOTERIES	GMI.S
61%	STARRAG N	STGN.S
61%	SWISSQUOTE GRP N	SQN.S
61%	ORASCOM DEV H	ODHN.S
61%	CONZZETA HLDNG I	CONC.S
61%	PERROT DUVAL II	PEDU.S
56%	LINDT & SP N	LISN.S
56%	KUEHNE & NAGEL	KNIN.S
56%	LOGITECH	LOGN.S
56%	ZUR ROSE GROUP N	ROSEG.S
56%	IVF HARTMANN	VBSN.S
56%	THURGAUER KB PS	TKBP.S
56%	FLUGHAFEN ZURICH	FHZN.S
50%	RELIEF THERAPEUT	RLFB.S
50%	WALLISER KTBK	WKB.S
50%	NEWRON PHARMA N	NWRN.S
50%	LIECH LANDBK	LLBN.S
44%	HYPO BK LENZN N	HBLN.S
44%	PANALPINA WELT	PWTN.S
44%	RIETER N	RIEN.S
44%	VETROPACK I	VET.S
44%	BARRY CALLEBAUT	BARN.S
44%	ABB LTD N	ABBN.S
44%	ASMALLWORLD N	ASWN.S
39%	ARUNDEL AG	ARONL.S
39%	DORMAKABA HOLD	DOKA.S
39%	NOVARTIS N	NOVN.S
39%	CS GROUP AG	CSGN.S
39%	LAFARGEHOLCIM	LHN.S
39%	EMMI N	EMMN.S
39%	CALIDA HLD N	CALN.S
39%	WISEKEY N	WIHN.S
33%	AMS	AMS.S
33%	SNB N	SNBN.S
33%	HIGHL EVNT & ENT	HLEE.S
33%	GIVAUDAN N	GIVN.S
33%	SCHWEITER I	SWTQ.S
33%	VALIANT N	VATN.S
33%	SWISS LIFE HLDG	SLHN.S
33%	BCV N	BCVN.S
33%	BB BIOTECH ORD	BION.S
33%	YPSOMED HOLDING	YPSN.S

33%	ALSO HLD AG	ALSN.S
33%	MOLECULAR PARTNE	MOLN.S
33%	BLACKSTONE RES	BLS.S
33%	VAT GROUP N	VACN.S
33%	ZUEBLIN N	ZUBN.S
33%	SENSIRION N	SENSI.S
28%	BK LINTH LLB AG	LINN.S
28%	ADVAL TECH N	ADV.N.S
28%	TEMENOS N	TEMN.S
28%	GEBERIT N1	GEBN.S
28%	U-BLOX N	UBXN.S
28%	MEIER TOBLER GRO	METG.S
28%	VARIA US PROP	VARN.S
22%	SGS N	SGSN.S
22%	ELMA N	ELMN.S
22%	CLARIANT N	CLN.S
22%	SWATCH GROUP N	UHRN.S
22%	SWATCH GROUP I	UHR.S
22%	EFG INT N	EFGN.S
22%	POLYPHOR N	POLN.S
22%	TITL BN BERG N	TIBN.S
22%	BELL FOOD GROUP	BELL.S
22%	VP BANK AG	VPBN.S
17%	ZUGER KB I	ZG.S
17%	BELIMO HOLDING N	BEAN.S
17%	CI COM SA I	CIE.S
17%	FISCHER N	FIN.S
17%	BUCHER N	BUCN.S
17%	PERFECT HOLDING	PRFN.S
17%	LUZERNER KB N	LUKN.S
17%	ADECCO N	ADEN.S
17%	STRAUMANN HLD N	STMN.S
17%	CIE FIN TR I	CFT.S
17%	PARGESA I	PARG.S
17%	DUFREY AG	DUFN.S
17%	SCHINDLER N	SCHN.S
17%	BURCKHARDT	BCHN.S
17%	VZ HOLDING N	VZN.S
17%	SULZER N	SUN.S
17%	METALL ZUG	METN.S
17%	ARYZTA AG	ARYN.S
17%	JULIUS BAER N	BAER.S
17%	GAM N	GAMH.S
17%	ARBONIA AG	ARBNO.S
17%	LECLANCHE N	LECN.S
17%	RICHEMONT N	CFR.S
17%	MOBILEZONE HLD I	MOZN.S
17%	VALARTIS GROUP	VLRT.S
17%	MEDACTA GROUP	MOVE.S
17%	CASSIOPEA N	SKIN.S
11%	PRIVATE EQUITY N	PEHN.S
11%	SPICE PRIV AG	SPCE.S
11%	CREALOGIX HLDG	CLXN.S

11%	TAMEDIA N	TAMN.S
11%	TECAN HLD N	TECN.S
11%	KUDELSKI	KUD.S
11%	BOBST GRP N	BOBNN.S
11%	EMS-CHEMIE N	EMSN.S
11%	LEM HOLDING N	LEHN.S
11%	SANTHERA PHARMA	SANN.S
11%	MEYER BURGER N	MBTN.S
11%	BURKHALTER AG	BRKN.S
11%	KUROS BIOSCIENCE	KURN.S
11%	COMET HOLDING	COTNE.S
11%	MEDARTIS	MEDA.S
11%	SIKA	SIKA.S
11%	KLINGELNBERG N	KLIN.S
11%	COSMO PHARM N	COPN.S
6%	SCHLATTER N	STRN.S
6%	VON ROLL I	ROL.S
6%	FORBO N	FORN.S
6%	SCHMOLZ+BICKENB	STLN.S
6%	INTERROLL N	INRN.S
6%	FEINTOOL N	FTON.S
6%	KOMAX N	KOMN.S
6%	ASCOM N	ASCN.S
6%	VONTOBEL N	VONN.S
6%	KARDEX I	KARN.S
6%	DKSH N	DKSH.S
6%	AUTONEUM N	AUTON.S
6%	BKW N	BKWB.S
6%	SFS GROUP	SFSN.S
6%	UBS GROUP N	UBSG.S
6%	OBSEVA SA/d	OBSV.O
0%	KTM INDUSTRIES/d	KTMI.VI
0%	OC OERLIKON CORP	OERL.S
0%	BASELAND KTBK	BLKB.S
0%	PHOENIX I	PM.S
0%	STADLER RAIL	SRAIL.S
0%	ZWAHLEN & MAYR	ZWM.S
0%	MIKRON N	MIKN.S
0%	CICOR TECH	CICN.S
0%	SCHAFFNER N	SAHN.S
0%	BASLER KTBK PS	BSKP.S
0%	BERNER KB N	BEKN.S
0%	TORNOS HOLDING N	TOHN.S
0%	EVOLVA HOLD AG	EVE.S
0%	SCHINDLER PS	SCHP.S
0%	HOCHDORF N	HOCN.S
0%	COLTENE N	CLTN.S
0%	HUBER & S N	HUBN.S
0%	LALIQUE	LLQ.S
0%	POENINA	PNHO.S
0%	LEONTEQ	LEON.S
0%	BOSSARD N	BOS.S

## Swiss stocks with a LONG-TERM positive model rating

The table below lists all 69 Swiss stocks (out of the SPI constituent stocks), which are rated POSITIVELY by my LONG-TERM Trend and Momentum Model. Stocks with a neutral or negative Score are tracing out a sizable medium-term correction and are at risk of breaking their long-term uptrend.

RIC	COMPANY	RIC	PRICE	LT
67%	AEVIS HOLDING SA	AEVS.S	12.60	+
100%	ALLREAL HLD N	ALLN.S	183.60	+
33%	ALSO HLD AG	ALSN.S	139.40	+
33%	AMS	AMS.S	40.92	+
78%	BACHEM HOLD N	BANB.S	134.20	+
100%	BALOISE HLD N	BALN.S	181.10	+
44%	BARRY CALLEBAUT	BARN.S	1'938.00	+
100%	BELLEVUE GRP N	BBN.S	21.50	+
89%	BFW LIEGENSCH N	BLIN.S	43.50	+
100%	BQ CANT DU JURA	BCJ.S	58.50	+
100%	BVZ HOLDING AG	BVZN.S	940.00	+
100%	CEMBRA MONEY BAN	CMBN.S	97.80	+
67%	CHAM GROUP AG	CHAMA.S	429.00	+
100%	DAETWYL I	DAE.S	152.40	+
94%	EDISUN POWER	ESUN.S	138.00	+
56%	FLUGHAFEN ZURICH	FHZN.S	179.00	+
100%	GALENICA	GALE.S	52.80	+
67%	GAVAZZI CARLO I	GAV.S	270.00	+
100%	GLARNER KB N	GLKBN.S	31.00	+
94%	GR KTBK PS	GRKP.S	1'470.00	+
94%	GURIT I	GUR.S	1'096.00	+
100%	HELVETIA HLDG	HELN.S	126.20	+
83%	IDORSIA N	IDIA.S	23.90	+
100%	IMPLENIA N	IMPN.S	30.24	+
94%	INFICON N	IFCN.S	606.50	+
100%	INTERSHOP N	ISN.S	517.00	+
100%	INVESTIS N	IREN.S	70.80	+
83%	JUNGFRAUBAHN N	JFN.S	147.00	+
56%	KUEHNE & NAGEL	KNIN.S	140.75	+
83%	LANDIS GYR	LANDI.S	84.10	+
83%	LASTMINUTE ORD	LMN.S	34.20	+
56%	LINDT & SP N	LISN.S	80'400.00	+
94%	LINDT & SP PS	LISP.S	7'425.00	+
100%	LONZA GRP AG N	LONN.S	348.30	+
100%	MCH GROUP AG	MCHN.S	23.30	+

RIC	COMPANY	RIC	PRICE	LT
100%	MOBIMO HLDG	MOBN.S	275.50	+
100%	NESTLE SA	NESN.S	109.08	+
39%	NOVARTIS N	NOVN.S	87.89	+
89%	ORIOR N	ORON.S	83.60	+
44%	PANALPINA WELT	PWTN.S	219.00	+
100%	PARTNERS GROUPAG	PGHN.S	792.40	+
83%	PEACH PROP	PEAN.S	33.00	+
61%	PERROT DUVAL I1	PEDU.S	137.00	+
78%	PLAZZA AG	PLANZ.S	255.00	+
100%	PSP CH PRPTY N	PSPN.S	130.80	+
100%	ROCHE HOLDING AG	ROG.S	274.70	+
78%	ROMANDE ENERGIE	HREN.S	1'240.00	+
89%	SIEGFRIED N	SFZN.S	366.00	+
83%	SIG COMB GRP N	SIGNC.S	12.58	+
78%	SONOVA H AG	SOON.S	227.50	+
89%	SUNRISE N	SRCG.S	78.55	+
100%	SWISS FIN&PROP	SFPN.S	95.00	+
33%	SWISS LIFE HLDG	SLHN.S	471.90	+
100%	SWISS PRIME SITE	SPSN.S	97.20	+
100%	SWISS RE N	SRENH.S	99.52	+
100%	SWISSCOM N	SCMN.S	488.20	+
61%	SWISSQUOTE GRP N	SQN.S	40.78	+
83%	VALORA N	VALN.S	271.00	+
33%	VAT GROUP N	VACN.S	114.50	+
100%	VAUDOISE VERS N	VAHN.S	510.00	+
100%	VIFOR PHARMA	VIFN.S	157.00	+
94%	VILLARS N	VILN.S	795.00	+
22%	VP BANK AG	VPBN.S	152.60	+
94%	WARTECK N	WARN.S	1'980.00	+
89%	ZEHNDER I	ZEHN.S	37.10	+
33%	ZUEBLIN N	ZUBN.S	26.40	+
100%	ZUG ESTATE HLD	ZUGN.S	1'900.00	+
56%	ZUR ROSE GROUP N	ROSEG.S	96.00	+
100%	ZURICH INSURANCE	ZURN.S	351.20	+

## Swiss Market Index 20 constituent stocks

SCORE	COMPANY	RIC	PRICE	LT	MT	ST	COMMENT	DATE BOUGHT	PRICE BOUGHT	PROFIT or LOSS
44%	ABB LTD N	ABBN.S	18.30	0	u0	uu+	Must rise above 18.70 to trigger a buy signal. Resistance is 19.15.			
17%	ADECCO N	ADEN.S	51.70	0	-	u0				
78%	ALCON N	ALCC.S	60.40	na	uu+	+				
39%	CS GROUP AG	CSGN.S	11.20	0	u0	uu+	see chart			
28%	GEBERIT N1	GEBN.S	437.30	0	-	u0	ADD to the position only if 440 is broken. Stop 429.	19.08.2019	438.10	-0.18%
33%	GIVAUDAN N	GIVN.S	2'610.00	0	-	0				
39%	LAFARGEHOLCIM	LHN.S	46.94	0	u0	uu+	Supports are 45.50 / 45 and 43.			
100%	LONZA GRP AG N	LONN.S	348.30	+	+	+	Hold.	11.06.2019	329.50	5.71%
100%	NESTLE SA	NESN.S	109.08	+	+	+	see chart			
39%	NOVARTIS N	NOVN.S	87.89	+	-	u0	see chart	24.05.2019	85.55	2.74%
17%	RICHEMONT N	CFR.S	75.18	do	-	u0				
100%	ROCHE HOLDING AG	ROG.S	274.70	+	+	+	see chart	24.05.2019	272.10	0.96%
22%	SGS N	SGSN.S	2'389.00	u0	-	u0				
11%	SIKA	SIKA.S	139.70	-	-	u+				
33%	SWISS LIFE HLDG	SLHN.S	471.90	u+	-	uu+				
100%	SWISS RE N	SRENH.S	99.52	+	+	+	BUY only if the major resistance at 101 is broken.			
100%	SWISSCOM N	SCMN.S	488.20	+	uu+	+				
22%	SWATCH GROUP I	UHR.S	265.10	-	0	u0				
6%	UBS GROUP N	UBSG.S	10.27	-	-	u0				
100%	ZURICH INSURANCE	ZURN.S	351.20	+	+	+	Long-term resistance is at 355 / 358 and 375.			

# Swiss Performance Index 200 stocks – listed alphabetically (A-Co)

SCORE	COMPANY	RIC	PRICE	LT	MT	ST	COMMENT	DATE BOUGHT	PRICE BOUGHT	PROFIT or LOSS
44%	ABB LTD N	ABB.N.S	18.30	o	uo	uu+	Must rise above 18.70 to trigger a buy signal. Resistance is 19.15.			
17%	ADECCO N	ADEN.S	51.70	o	-	uo				
28%	ADVAL TECH N	ADV.N.S	166.00	-	uo	+				
67%	AEVIS HOLDING SA	AEVS.S	12.60	+	o	+				
78%	AIREIS SA	AIRE.S	1.23	uo	+	+				
78%	ALCON N	ALCC.S	60.40	na	uu+	+	see chart			
100%	ALLREAL HLD N	ALLN.S	183.60	+	+	+	Hold.	02.07.2019	169.80	8.13%
33%	ALSO HLD AG	ALSN.S	139.40	+	d-	-				
33%	AMS	AMS.S	41.32	+	d-	-				
72%	APG SGA	APGN.S	265.00	do	+	+				
17%	ARBONIA AG	ARBNO.S	11.02	o	-	uo				
39%	ARUNDEL AG	ARONL.S	2.08	do	do	do				
17%	ARYZTA AG	ARYN.S	0.75	o	-	o				
6%	ASCOM N	ASCN.S	10.20	-	-	uo				
44%	ASMALLWORLD N	ASWN.S	2.10	o	uu+	-				
6%	AUTONEUM N	AUTON.S	100.30	-	-	uo				
78%	BACHEM HLD N	BANB.S	134.20	+	+	+	BUY and add to the position if a breakout above 139 occurs.	20.08.2019	134.60	
100%	BALOISE HLD N	BALN.S	181.10	+	+	+	BUY only if 183 is broken. Seems to have some more upside left to 188/191.			
44%	BARRY CALLEBAUT	BARN.S	1'938.00	+	-	do				
0%	BASELLAND KTBK	BLKB.S	904.00	-	-	-				
78%	BASILEA PHARMA	BSLN.S	36.98	o	+	+				
0%	BASLER KTBK PS	BSKP.S	69.40	-	d-	-				
33%	BB BIOTECH ORD	BION.S	63.10	-	uo	u+				
83%	BC GENEVE P	BCGE.S	200.00	uo	u+	uo				
33%	BCV N	BCVN.S	725.00	uo	o	uo				
17%	BELIMO HOLDING N	BEAN.S	5'020.00	o	-	uo				
22%	BELL FOOD GROUP	BELL.S	264.00	uo	-	uu+				
100%	BELLEVUE GRP N	BBN.S	21.50	+	+	+				
0%	BERNER KB N	BEKN.S	215.00	-	-	-				
89%	BFW LIEGENSCH N	BLIN.S	43.50	+	+	do				
28%	BK LINTH LLB AG	LINN.S	476.00	o	o	dd-				
6%	BKW N	BKWB.S	63.20	-	-	o				
33%	BLACKSTONE RES	BLS.S	1.09	o	o	o				
11%	BOBST GRP N	BOBNN.S	47.90	-	-	u+				
0%	BOSSARD N	BOS.S	130.10	-	-	-				
100%	BQ CANT DU JURA	BCJ.S	58.50	u+	uu+	uu+				
17%	BUCHER N	BUCN.S	282.60	o	-	uo				
17%	BURCKHARDT	BCHN.S	229.50	-	uo	-				
11%	BURKHALTER AG	BRKN.S	73.80	do	dd-	dd-	Must hold above 71 or the long-term downtrend is likely to resume.			
100%	BVZ HOLDING AG	BVZN.S	940.00	+	+	+				
39%	CALIDA HLD N	CALN.S	27.80	uo	o	+				
17%	CASSIOPEA N	SKIN.S	41.60	-	uo	-				
100%	CEMBRA MONEY BAN	CMBN.S	97.80	+	u+	uu+	BUY only if the resistance levels at 101/102 are broken. Could then signal 107 or 111/116.			
78%	CEVA LOGISTICS N	CEVAL.S	29.85	o	u+	uu+				
67%	CHAM GROUP AG	CHAMA.S	429.00	+	+	dd-				
17%	CI COM SA I	CIE.S	2.34	o	-	uo				
0%	CICOR TECH	CICN.S	43.80	d-	-	d-				
17%	CIE FIN TR I	CFT.S	100.50	d-	do	dd-				
22%	CLARIANT N	CLN.S	17.62	-	o	uo				
0%	COLTENE N	CLTN.S	77.30	-	-	-				
11%	COMET HOLDING	COTNE.S	82.35	o	-	-				
61%	CONZZETA HLDNG I	CONC.S	785.00	uo	uu+	+	BUY signals if the resistances at 790 / 810 are broken.			
11%	COSMO PHARM N	COPN.S	85.20	-	-	o				

# SPI Index 200 constituent stocks - alphabetically (Co-La)

SCORE	COMPANY	RIC	PRICE	LT	MT	ST	COMMENT	DATE BOUGHT	PRICE BOUGHT	PROFIT or LOSS
78%	CPH CHEM&PAPER	CPHN.S	83.80	o	+	+				
11%	CREALOGIX HLDG	CLXN.S	92.80	-	-	+				
39%	CS GROUP AG	CSGN.S	11.20	o	uo	uu+	see chart			
100%	DAETWYL I	DAE.S	152.40	u+	u+	uu+				
6%	DKSH N	DKSH.S	48.50	-	-	o				
39%	DORMAKABA HOLD	DOKA.S	702.50	o	o	uo				
17%	DUFREY AG	DUFN.S	77.82	-	o	-				
94%	EDISUN POWER	ESUN.S	138.00	+	+	+				
22%	EFG INT N	EFGN.S	6.12	o	-	uu+				
22%	ELMA N	ELMN.S	408.00	do	-	-				
39%	EMMI N	EMMN.S	838.50	uo	uo	+				
11%	EMS-CHEMIE N	EMSN.S	584.00	do	-	-				
0%	EVOLVA HOLD AG	EVE.S	0.15	-	d-	dd-	Downtrend is resuming.			
6%	FEINTOOL N	FTON.S	57.50	-	-	uo				
17%	FISCHER N	FIN.S	797.00	o	-	uo				
56%	FLUGHAFEN ZURICH	FHZN.S	179.00	+	do	uo	Sell the position if the supports at 177 and 174 are broken. Lower support is 167.	11.06.2019	173.30	3.29%
6%	FORBO N	FORN.S	1'430.00	-	-	uo				
100%	GALENICA	GALE.S	52.80	+	+	+				
17%	GAM N	GAMH.S	3.63	o	-	uo				
67%	GAVAZZI CARLO I	GAV.S	270.00	u+	uo	uu+	Likely to fall to 238.			
28%	GEBERIT N1	GEBN.S	437.30	o	-	uo	ADD to the position only if 440 is broken. Stop 429.	19.08.2019	438.10	-0.18%
33%	GIVAUDAN N	GIVN.S	2'610.00	o	-	o				
100%	GLARNER KB N	GLKBN.S	31.00	+	+	+				
94%	GR KTBK PS	GRKP.S	1'470.00	u+	+	u+				
67%	GRP MINOTERIES	GMI.S	366.00	-	+	+				
94%	GURIT I	GUR.S	1'096.00	+	+	u+				
100%	HELVETIA HLDG	HELN.S	126.20	u+	uu+	uu+	BUY only if 127.50 and 128.50 is cleared. Could then rise to 133.			
72%	HIAG IMMOBILIEN	HIAG.S	128.00	do	+	dd-				
33%	HIGHL EVNT & ENT	HLEE.S	19.00	-	uo	uu+				
0%	HOCHDORF N	HOCN.S	73.30	-	-	d-				
0%	HUBER & S N	HUBN.S	69.10	-	-	-				
44%	HYPO BK LENZB N	HBLN.S	4'500.00	uo	uu+	-				
83%	IDORSIA N	IDIA.S	23.90	+	u+	+	BUY only if the resistance level at 24.50 / 25 is broken. Could then signal 26.50 to 30.			
100%	IMPLENIA N	IMPN.S	30.24	uu+	uu+	+	BUY only if the resistance at 32 is broken. Could turn around with resistance at 34, 38.			
94%	INFICON N	IFCN.S	606.50	+	+	u+	Forming a triangle. Looking to buy back the position.			
6%	INTERROLL N	INRN.S	1'766.00	-	-	uo				
100%	INTERSHOP N	ISN.S	517.00	+	+	+				
100%	INVESTIS N	IREN.S	70.80	+	+	+	BUY if the resistance at 72.50 is broken. Next target is 75.50 and 79 / 81.			
56%	IVF HARTMANN	VBSN.S	154.00	o	o	u+				
17%	JULIUS BAER N	BAER.S	38.15	o	-	uo				
83%	JUNGFRAUBAHN N	JFN.S	147.00	+	+	dd-				
6%	KARDEX I	KARN.S	134.20	-	-	uo				
11%	KLINGELNBERG N	KLIN.S	32.30	o	-	dd-				
6%	KOMAX N	KOMN.S	172.40	-	-	uo				
0%	KTM INDUSTRIES/d	KTMI.VI	50.00	-	-	-				
11%	KUDELSKI	KUD.S	5.87	o	-	-				
56%	KUEHNE & NAGEL	KNIN.S	140.75	+	o	uo				
11%	KUROS BIOSCIENCE	KURN.S	1.56	o	-	d-				
39%	LAFARGEHOLCIM	LHN.S	46.94	o	uo	uu+	Supports are 45.50 / 45 and 43.			
0%	LALIQUE	LLQ.S	38.60	-	-	d-				
83%	LANDIS GYR	LANDI.S	84.10	+	+	+				
83%	LASTMINUTE ORD	LMN.S	34.20	+	+	+				
17%	LECLANCHE N	LECN.S	1.57	-	o	d-				

# SPI Index 200 constituent stocks - alphabetically (La-Se)

SCORE	COMPANY	RIC	PRICE	LT	MT	ST	COMMENT	DATE BOUGHT	PRICE BOUGHT	PROFIT or LOSS
11%	LEM HOLDING N	LEHN.S	1'258.00	O	-	-	Sell signal if 1252 is broken.	11.02.2019	1166.00	7.89%
0%	LEONTEQ	LEON.S	31.18	-	-	-	Must rebound above 32 to signal a turnaround.			
50%	LIECH LANDBK	LLBN.S	60.90	-	uu+	+				
56%	LINDT & SP N	LISN.S	80'400.00	+	+	-				
94%	LINDT & SP PS	LISP.S	7'425.00	+	+	+				
56%	LOGITECH	LOGN.S	38.71	uo	uu+	uo				
100%	LONZA GRP AG N	LONN.S	348.30	+	+	+	Hold.	11.06.2019	329.50	5.71%
17%	LUZERNER KB N	LUKN.S	420.00	-	O	-				
100%	MCH GROUP AG	MCHN.S	23.30	+	+	+				
17%	MEDACTA GROUP	MOVE.S	82.50	-	O	-				
11%	MEDARTIS	MEDA.S	49.80	-	-	uu+				
28%	MEIER TOBLER GRO	METG.S	15.54	O	O	-				
17%	METALL ZUG	METN.S	1'980.00	-	O	-				
11%	MEYER BURGER N	MBTN.S	0.40	O	-	dd-				
0%	MIKRON N	MIKN.S	7.20	-	-	d-				
17%	MOBILEZONE HLD I	MOZN.S	9.34	-	-	+				
100%	MOBIMO HLDG	MOBN.S	275.50	+	+	+	Hold.	02.07.2019	263.00	4.75%
33%	MOLECULAR PARTNE	MOLN.S	13.16	-	uo	u+	Must rise above 13.45 to signal a turnaround.			
100%	NESTLE SA	NESN.S	109.08	+	+	+	see chart			
50%	NEWRON PHARMA N	NWRN.S	6.14	-	u+	uu+				
39%	NOVARTIS N	NOVN.S	87.89	+	-	uo	see chart	24.05.2019	85.55	2.74%
78%	O FUESSLI N	OFN.S	91.50	O	u+	uu+				
6%	OBSEVA SA/d	OBSV.O	9.00	d-	-	O				
0%	OC OERLIKON CORP	OERL.S	9.04	-	-	-				
61%	ORASCOM DEV H	ODHN.S	14.98	O	+	u+	ADD to the position. Stop 14.00	11.06.2019	13.96	7.31%
89%	ORIOR N	ORON.S	83.60	+	+	u+				
44%	PANALPINA WELT	PWTN.S	219.00	+	-	uo				
17%	PARGESA I	PARG.S	69.30	uo	-	uo				
100%	PARTNERS GROUPAG	PGHN.S	792.40	+	+	uu+	BUY >802. Major resistance levels are 802, 810/825 and 845 to 865/885.			
83%	PEACH PROP	PEAN.S	33.00	+	+	u+	Sell the position if 31 is broken. Supports are 30, 29 and 27.80.	27.06.2019	34.10	-3.23%
17%	PERFECT HOLDING	PRFN.S	0.02	do	dd-	do				
61%	PERROT DUVAL I1	PEDU.S	137.00	+	O	O				
0%	PHOENIX I	PM.S	401.00	-	d-	-				
78%	PLAZZA AG	PLANZ.S	255.00	+	+	+				
0%	POENINA	PNHO.S	45.00	d-	d-	-				
22%	POLYPHOR N	POLN.S	4.40	-	uo	O				
11%	PRIVATE EQUITY N	PEHN.S	58.00	-	-	+				
100%	PSP CH PRPTY N	PSPN.S	130.80	+	+	+				
50%	RELIEF THERAPEUT	RLFB.S	0.00	-	uu+	+				
17%	RICHEMONT N	CFR.S	75.18	do	-	uo				
44%	RIETER N	RIEN.S	130.60	O	uo	uu+				
100%	ROCHE HOLDING AG	ROG.S	274.70	+	+	+	see chart	24.05.2019	272.10	0.96%
78%	ROMANDE ENERGIE	HREN.S	1'240.00	+	u+	uo	Hold.	10.09.2018	1230.00	0.81%
11%	SANTHERA PHARMA	SANN.S	12.20	do	-	-				
0%	SCHAFFNER N	SAHN.S	200.00	-	-	d-				
17%	SCHINDLER N	SCHN.S	209.40	dd-	do	dd-				
0%	SCHINDLER PS	SCHP.S	210.30	dd-	dd-	dd-				
6%	SCHLATTER N	STRN.S	39.40	d-	-	uo				
6%	SCHMOLZ+BICKENB	STLN.S	0.31	-	-	do				
33%	SCHWEITER I	SWTQ.S	921.00	O	O	uo				
33%	SENSIRION N	SENSI.S	34.70	-	+	d-	BUY only if the resistance at 37.50 is broken. Target 40 to 44.			
6%	SFS GROUP	SFSN.S	71.75	-	-	uo				
22%	SGS N	SGSN.S	2'389.00	uo	-	uo				

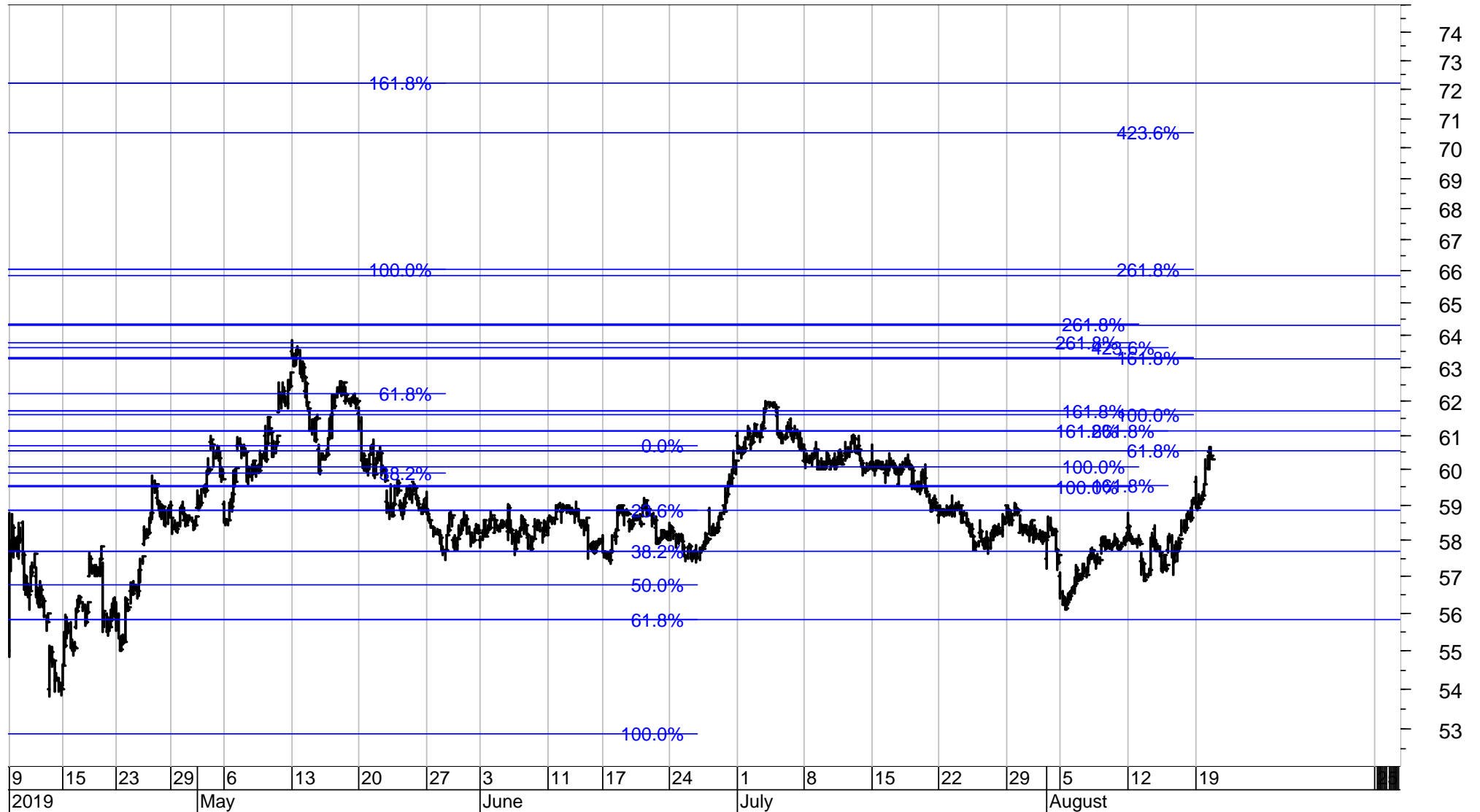
# SPI Index 200 constituent stocks - alphabetically (Sf-Z)

SCORE	COMPANY	RIC	PRICE	LT	MT	ST	COMMENT	DATE BOUGHT	PRICE BOUGHT	PROFIT or LOSS
89%	SIEGFRIED N	SFZN.S	366.00	uu+	+	uu+	BUY only if the resistance at 371 is broken. Target 385 to 410.			
83%	SIG COMB GRP N	SIGNC.S	12.58	+	+	+	Hold.	24.07.2019	11.20	12.32%
11%	SIKA	SIKA.S	139.70	-	-	u+				
33%	SNB N	SNBN.S	5'100.00	-	uo	uu+				
78%	SONOVA H AG	SOON.S	227.50	+	+	u+	BUY only if the resistance cluster 231 / 232.50 is broken. Target 238 to 247.			
11%	SPICE PRIV AG	SPCE.S	21.20	do	dd-	dd-				
67%	ST GALLER KB N	SGKN.S	434.00	-	u+	uu+				
0%	STADLER RAIL	SRAIL.S	43.30	na	-	-	see chart	20.08.2019	43.50	
61%	STARRAG N	STGN.S	49.80	uo	uu+	uu+				
17%	STRAUMANN HLD N	STMN.S	784.60	uo	-	o				
17%	SULZER N	SUN.S	90.90	uo	-	uo				
89%	SUNRISE N	SRCG.S	78.55	+	+	u+	BUY. Next target is 81 / 82 or 87.	20.08.2019	78.25	
22%	SWATCH GROUP I	UHR.S	265.10	-	o	uo				
22%	SWATCH GROUP N	UHRN.S	49.44	-	o	uo				
100%	SWISS FIN&PROP	SFPN.S	95.00	+	+	+				
33%	SWISS LIFE HLDG	SLHN.S	471.90	u+	-	uu+				
100%	SWISS PRIME SITE	SPSN.S	97.20	+	+	+	Reaching the long-term resistance at 96 / 101.	09.01.2019	82.20	18.25%
100%	SWISS RE N	SRENH.S	99.52	+	+	+	BUY only if the major resistance at 101 is broken.			
100%	SWISSCOM N	SCMN.S	488.20	+	uu+	+				
61%	SWISSQUOTE GRP N	SQN.S	40.78	+	+	do				
11%	TAMEDIA N	TAMN.S	105.80	do	-	-				
11%	TECAN HLD N	TECN.S	238.00	do	dd-	dd-				
28%	TEMENOS N	TEMN.S	162.05	o	-	uo				
56%	THURGAUER KB PS	TKBP.S	107.00	do	+	dd-				
22%	TITL BN BERG N	TIBN.S	326.00	-	o	uo				
0%	TORNOS HOLDING N	TOHN.S	6.91	-	-	d-				
28%	U-BLOX N	UBXN.S	71.15	o	uo	-	Long-term support is at 64 / 62.			
6%	UBS GROUP N	UBSG.S	10.27	-	-	uo				
17%	VALARTIS GROUP	VLRT.S	10.30	-	-	uu+				
33%	VALIANT N	VATN.S	102.60	-	o	u+				
83%	VALORA N	VALN.S	271.00	+	+	dd-	Must hold above 262 / 252 or the major trend would turn down.			
28%	VARIA US PROP	VARN.S	36.40	o	o	-				
33%	VAT GROUP N	VACN.S	114.50	u+	-	uu+				
100%	VAUDOISE VERS N	VAHN.S	510.00	+	+	+				
44%	VETROPACK I	VET.S	2'045.00	-	u+	+				
100%	VIFOR PHARMA	VIFN.S	157.00	+	+	+	Hold.	11.06.2019	143.10	9.71%
94%	VILLARS N	VILN.S	795.00	+	+	+				
6%	VON ROLL I	ROL.S	0.98	-	-	uo				
6%	VONTOBEL N	VONN.S	50.80	-	-	o	Falling to long-term support at 51 / 50.50. If broken, expect to see 47.			
22%	VP BANK AG	VPBN.S	152.60	+	-	-				
17%	VZ HOLDING N	VZN.S	290.00	-	uo	-				
50%	WALLISER KTBK	WKB.S	117.00	d-	+	dd-				
94%	WARTECK N	WARN.S	1'980.00	+	+	+				
39%	WISEKEY N	WIHN.S	2.39	o	o	u+				
33%	YPSOMED HOLDING	YPSN.S	125.20	do	o	o				
89%	ZEHNDER I	ZEHN.S	37.10	+	+	o				
33%	ZUEBLIN N	ZUBN.S	26.40	+	dd-	-				
100%	ZUG ESTATE HLD	ZUGN.S	1'900.00	+	+	+				
17%	ZUGER KB I	ZG.S	6'040.00	d-	do	-				
56%	ZUR ROSE GROUP N	ROSEG.S	96.00	u+	uo	u+	BUY only if the resistance at 96.50 is broken. Target 99.50, 104 and 114 / 117.			
100%	ZURICH INSURANCE	ZURN.S	351.20	+	+	+	Long-term resistance is at 355 / 358 and 375.			
0%	ZWAHLEN & MAYR	ZWM.S	250.00	-	-	-				



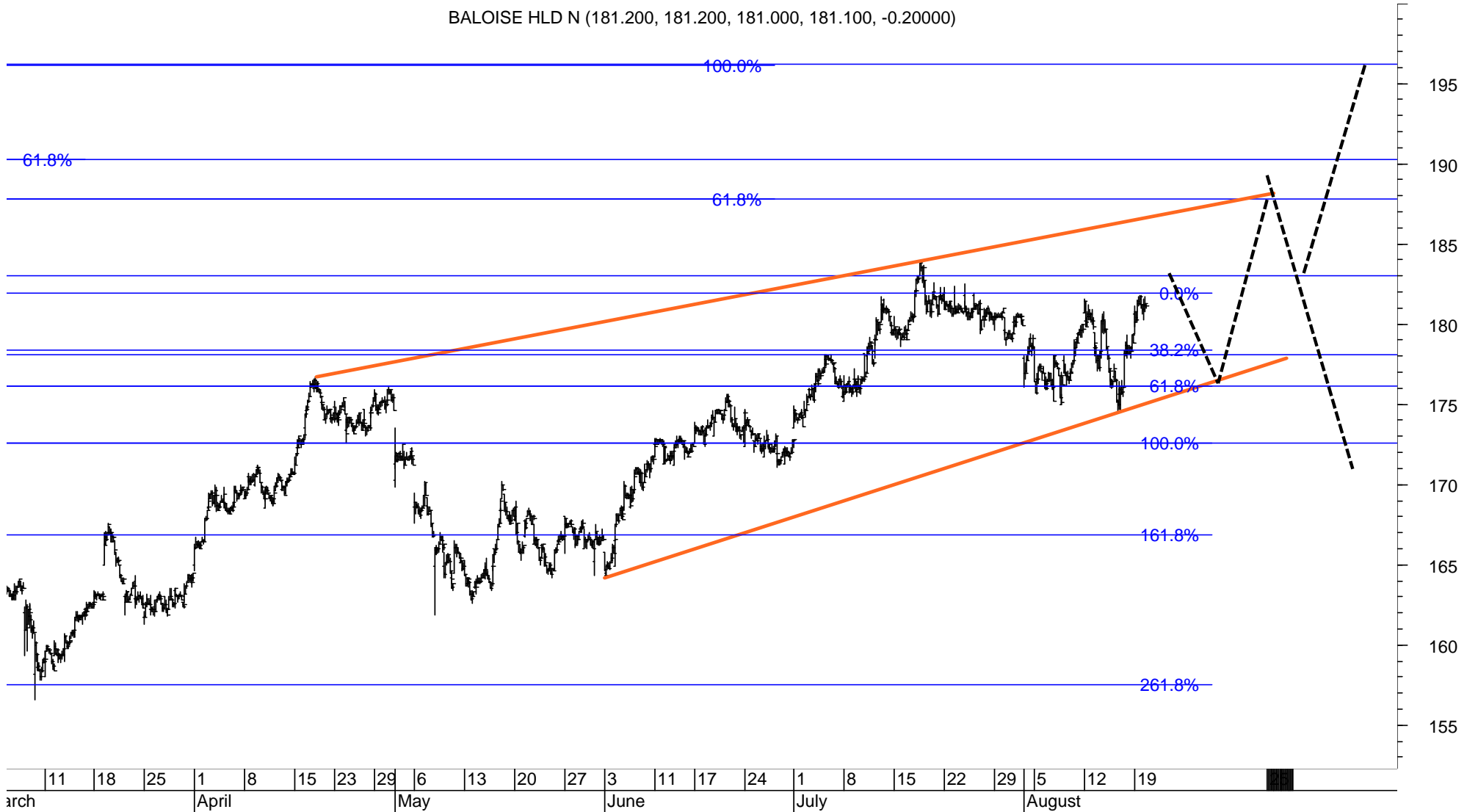
# ALCON – hourly chart

Alcon will trigger a new buy signal if 60.70 to 61.80 is broken.  
 Next resistance is at 63.30 to 64.30 and 66.  
 A break of 66 could signal 72.50.  
 Support is at 58.80, 57.70 and 55.80.



# BALOISE – hourly chart

Baloise could be forming a Wedge.  
 A rise above 183 could signal 188 / 190 or 196.  
 The supports must be watched at 177, 176 and 172.



## CSG GROUP – 30-minute chart

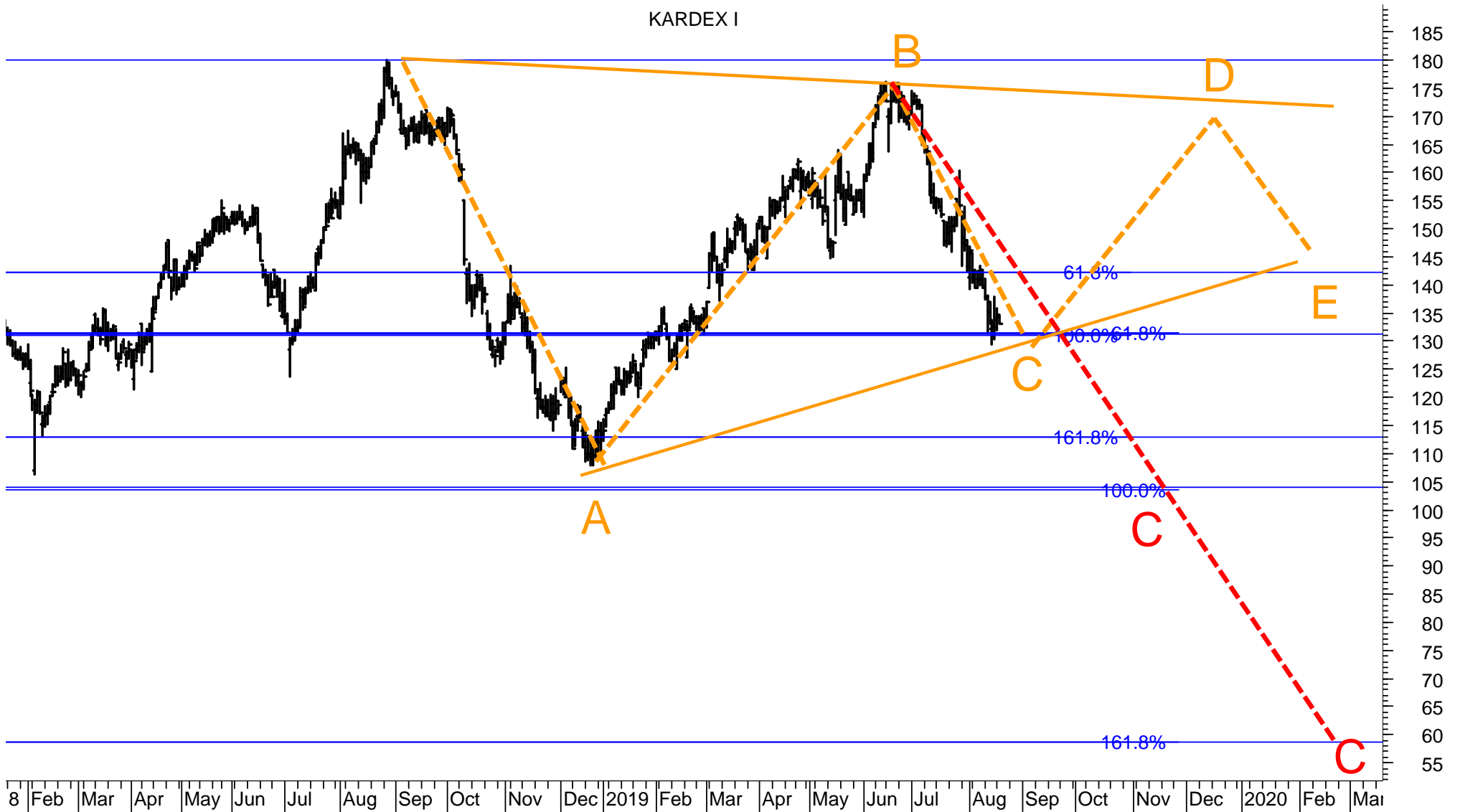
CSG could still be tracing out a five-wave decline with support and target at 10.60 or 10.15. It would take a rise above 11.40 and 11.80 to signal a possible turnaround.



# KARDEX – daily chart

Kardex fell to the major support just above 130.

A break of 130 / 128 could trigger more selling to the support at 113 / 103 ( $C = 1 \times A$ ) or 58 ( $C = 1.618 \times A$ ).



# NESTLE – 5-minute chart (re-printed from my Chart Outlook of 13.8.2019)

Last week I stated that:

“Nestlé is likely to form Wave 4 within the uptrend from early August. Wave 5 could push Nestlé towards 109.50. I expect the stock to register another top around this level.”

See the updated chart on the next page.



## NESTLE – 10-minute chart

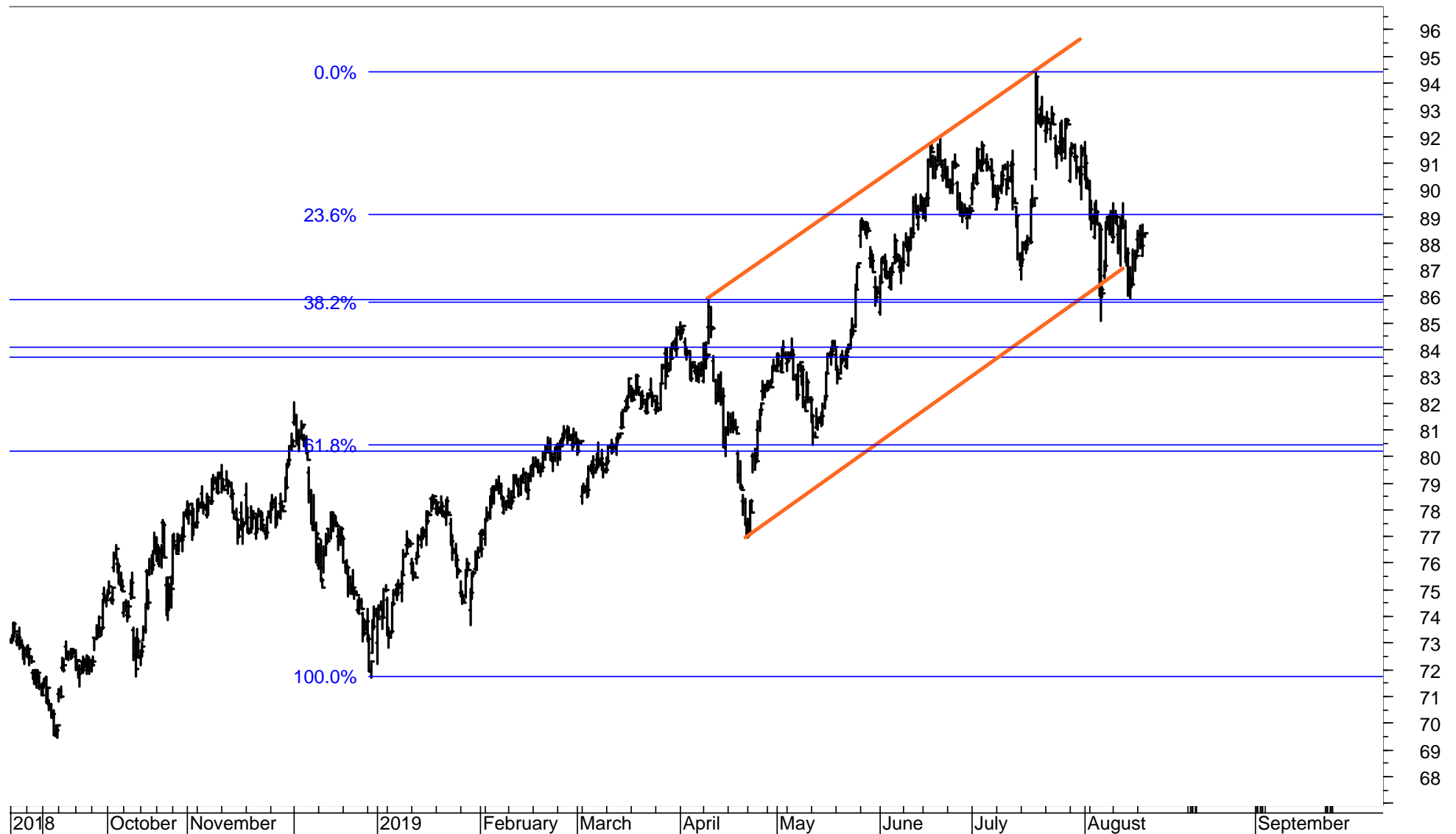
Nestlé rose to the resistance at 109.50, a test of which I had forecast last week.  
A break of 109.50 / 110 could extend the uptrend to 111.50.  
Supports are 108.20 and 107.30.



# NOVARTIS – 240-minute chart

Novartis remains in a trading range, just above support at 86 / 83.50.

A break of 83.50 would signal 80, a break of which could activate the supports at 74 / 71.50.

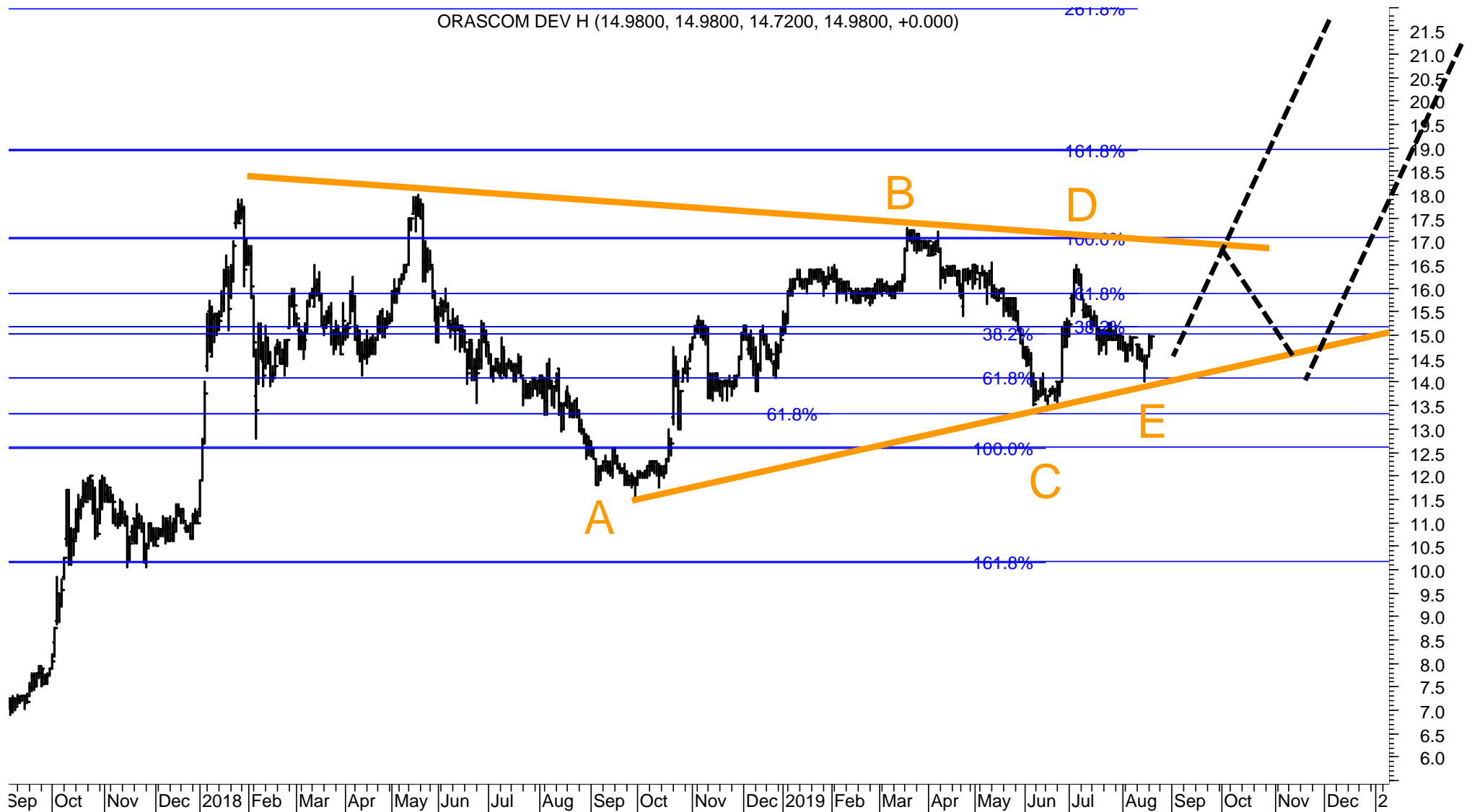


# ORASCOM – daily chart

Orascom could just have completed the Triangle, which originated in early 2018.

The critical support is 14. Resistance is at 15.20, 16 and 17.10.

The Triangle is treated as a consolidation with higher targets to be signaled unless the support at 13.30 or 12.60 is broken.





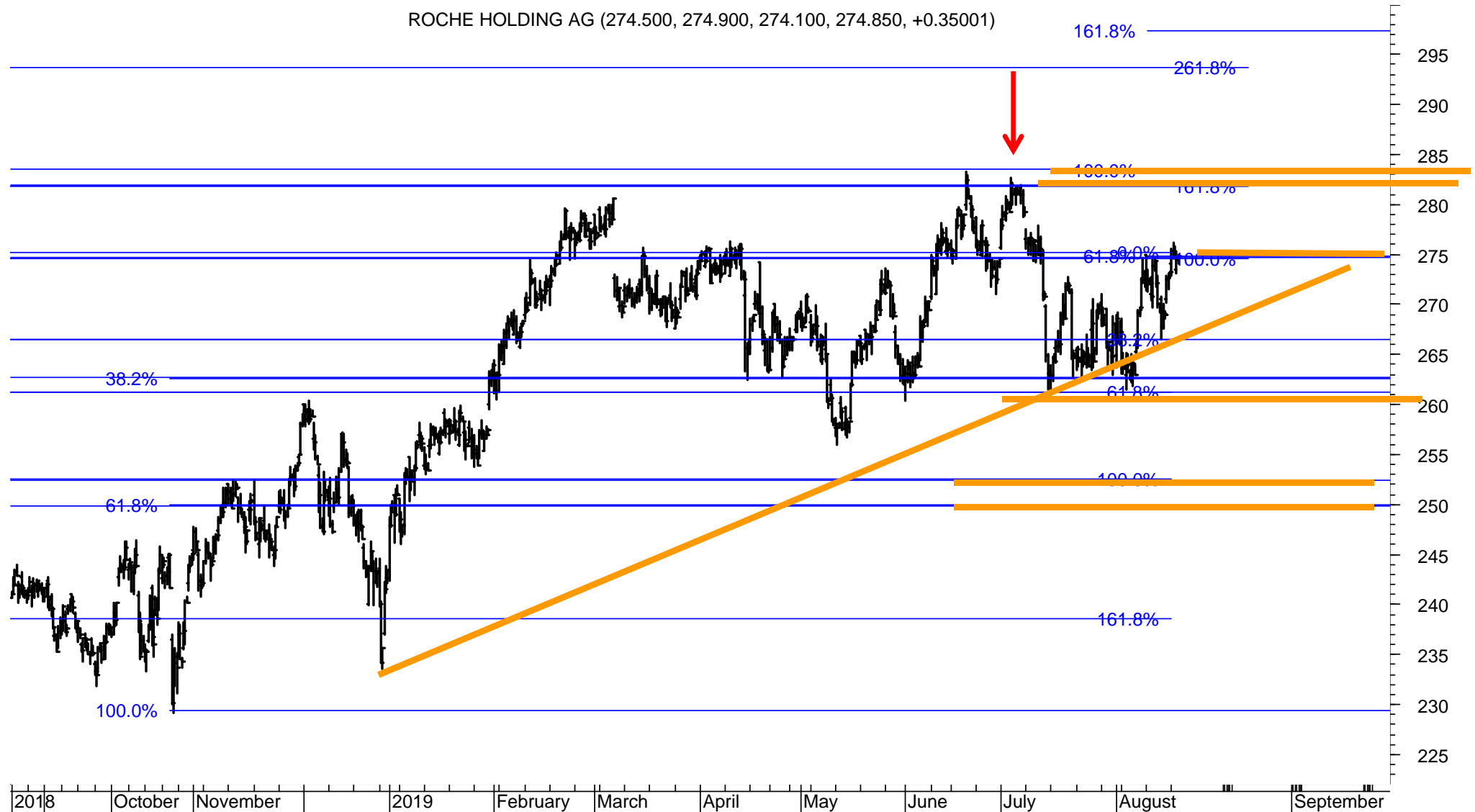
# ROCHE GS – 240-minute chart

Roche is testing major resistance at 275/77.

It must rise above this level to signal the resumption of the uptrend.

The risk is that the uptrend has peaked with a failure on 3.7.2019 at 282.70.

A major decline would be signaled if 266 and 261 is broken. Next major support is at 252 / 250.



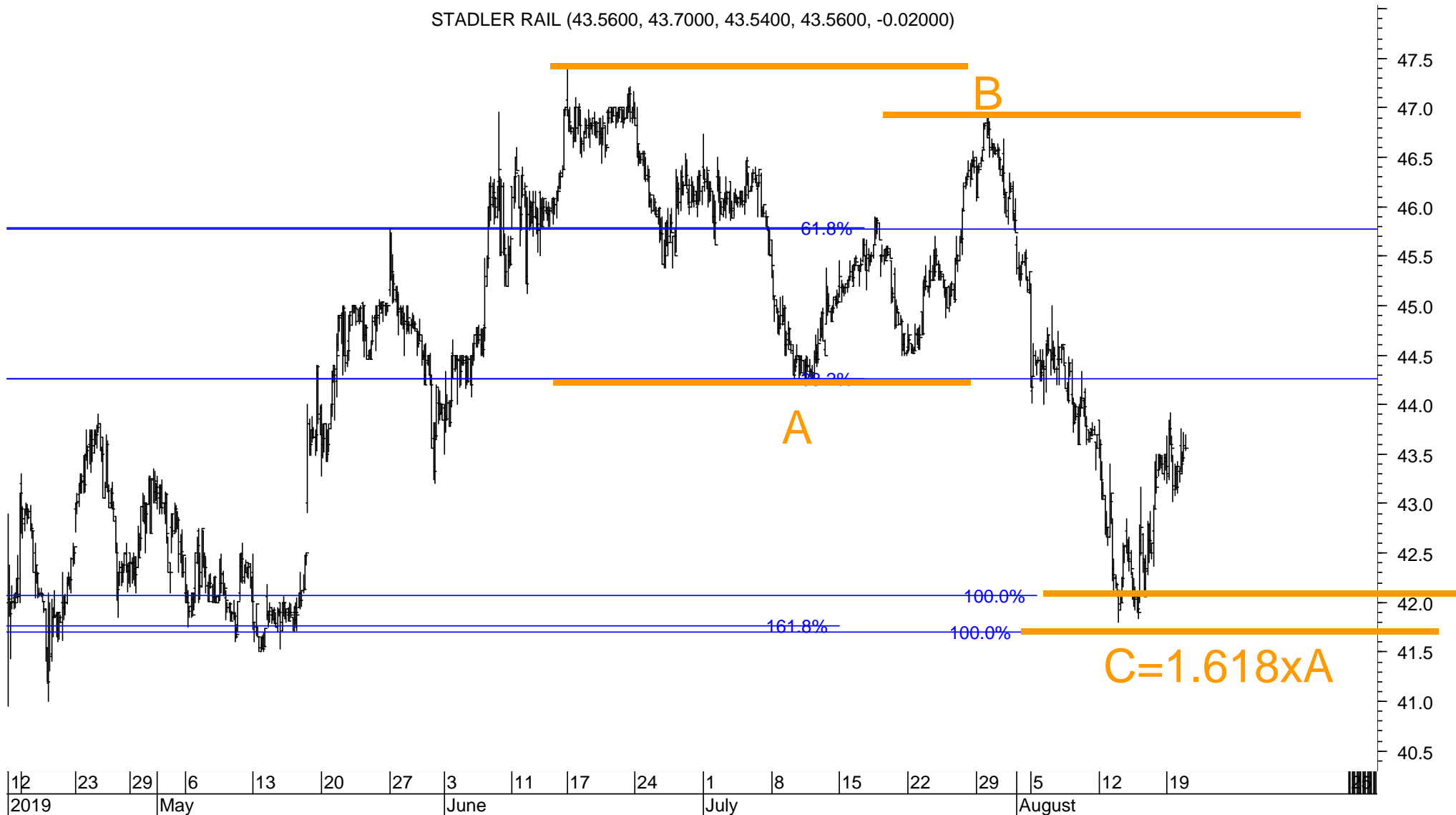
# STADLER RAIL – hourly chart

Last week I stated that the stock “broke 43.70 and is falling to 41.70.”

As you can see below did the decline take the stock to 41.80 from where it turned up again.

The correction traced out a textbook FLAT A-B-C. Wave C was 1.618 times the length of Wave A at 41.70.

Given the importance of the support at 41.70 I am willing to BUY with a stop at 41.50.



# STOXX 200 stocks – listed according to the Score (range from 100% to 0%, 40%-60% is neutral)

100%	AIR LIQUIDE	AIRP.PA
100%	BAYER (XET)	BAYGn.DE
100%	CARLSBERG B	CARLb.CO
100%	CASTELLUM	CAST.ST
100%	COLOPLAST B	COLOb.CO
100%	DANONE	DANO.PA
100%	ENDESA	ELE.MC
100%	ENEL	ENEI.MI
100%	ESSILORLUXOTTICA	ESLX.PA
100%	FASTIGHETS BALDER B	BALDb.ST
100%	GENMAB	GEN.CO
100%	IBERDROLA	IBE.MC
100%	ICA GRUPPEN	ICAA.ST
100%	INNOGY (XET)	IGY.DE
100%	NATIONAL GRID	NG.L
100%	NOVO NORDISK 'B'	NOVOb.CO
100%	ORSTED	ORSTED.CO
100%	PHILIPS ELTN.KONINKLIJKE	PHG.AS
100%	TELE2 B	TEL2b.ST
100%	VINCI	SGEF.PA
100%	VIVENDI	VIV.PA
94%	ASML HOLDING	ASML.AS
94%	ASTRAZENECA	AZN.L
94%	COMPASS GROUP	CPG.L
94%	LOOMIS B	LOOMb.ST
94%	RWE (XET)	RWEG.DE
94%	SKANSKA B	SKAb.ST
94%	TELENOR	TEL.OL
94%	VODAFONE GROUP	VOD.L
89%	BRITISH AMERICAN TOBACCO	BATS.L
89%	CD PROJECT RED	CDR.WA
89%	FABEGE	FABG.ST
89%	KINNEVIK B	KINVb.ST
89%	MERCK KGAA (XET)	MRCG.DE
89%	NESTE	NESTE.HE
89%	SALMAR	SALM.OL
89%	SANOFI	SASY.PA
89%	SCHIBSTED A	SBSTA.OL
83%	ANHEUSER-BUSCH INBEV	ABI.BR
83%	BEIERSDORF (XET)	BEIG.DE
83%	DEUTSCHE BOERSE (XET)	DBIGn.DE
83%	EPIROC A	EPIRa.ST
83%	ESSITY B	ESSITYb.ST
83%	GLAXOSMITHKLINE	GSK.L
83%	KONE 'B'	KNEBV.HE
83%	ORKLA	ORK.OL
83%	RELX	REL.L
83%	UNILEVER	UNA.AS
83%	UNILEVER (UK)	ULVR.L
78%	AAK	AAK.ST

78%	ACCOR	ACCP.PA
78%	ASSA ABLOY B	ASSAb.ST
78%	DIAGEO	DGE.L
78%	ENGIE	ENGIE.PA
78%	IMPERIAL BRANDS	IMB.L
78%	INDITEX	ITX.MC
78%	KONINKLIJKE AHOLD DELHAIZE	AD.AS
72%	DEUTSCHE TELEKOM (XET)	DTEGn.DE
72%	PERNOD-RICARD	PERP.PA
67%	AMBU B	AMBUb.CO
67%	CRH (DUB)	CRH.I
67%	DEUTSCHE POST (XET)	DPWGn.DE
67%	DSV 'B'	DSV.CO
67%	MUENCHENER RUCK. (XET)	MUVGn.DE
61%	AIRBUS	AIR.PA
61%	NOKIA	NOKIA.HE
61%	ORANGE	ORAN.PA
56%	VONOVIA (XET)	VNA.n.DE
50%	SAFRAN	SAF.PA
50%	THALES	TCFP.PA
44%	A P MOLLER MAERSK B	MAERSKb.CO
44%	ELECTROLUX B	ELUXb.ST
44%	INVESTOR B	INVEb.ST
44%	LUNDIN PETROLEUM	LUPE.ST
44%	SOCIETE GENERALE	SOGN.PA
44%	TELIA COMPANY	TELIA.ST
39%	BASF (XET)	BASFn.DE
39%	BNP PARIBAS	BNPP.PA
39%	FERRARI (MIL)	RACE.MI
39%	INTESA SANPAOLO	ISP.MI
39%	SVENSKA CELLULOSA AKTIEBOLAG	SCAb.ST
39%	TRELLEBORG B	TRELb.ST
33%	ATLAS COPCO A	ATCOa.ST
33%	BOLIDEN ORD SHS	BOL.ST
33%	CHRISTIAN DIOR	DIOR.PA
33%	GJENSIDIGE FORSIKRING	GJFS.OL
33%	HEINEKEN	HEIN.AS
33%	LVMH	LVMH.PA
33%	NATURGY ENERGY	NTGY.MC
33%	PANDORA	PNDORA.CO
33%	SAP (XET)	SAPG.DE
33%	VOLKSWAGEN PREF. (XET)	VOWG_p.DE
28%	ADIDAS (XET)	ADSGn.DE
28%	ADYEN	ADYEN.AS
28%	AKER BP	AKERBP.OL
28%	DEUTSCHE BANK (XET)	DBKGn.DE
28%	DOMETIC GROUP	DOMETIC.ST
28%	HENKEL PREF. (XET)	HNKG.DE
28%	HERMES INTL.	HRMS.PA
28%	SCHNEIDER ELECTRIC	SCHN.PA

28%	TRYG	TRYG.CO
22%	AENA SME	AENA.MC
22%	ALLIANZ (XET)	ALVG.DE
22%	AMADEUS IT GROUP	AMA.MC
22%	ARCELORMITTAL	MT.AS
22%	BANK POLSKA KASA OPIEKI	PEO.WA
22%	BMW (XET)	BMWG.DE
22%	COVESTRO (XET)	1COV.DE
22%	DNB	DNB.OL
22%	ELEKTA B	EKTab.ST
22%	ENI	ENI.MI
22%	GETINGE B	GETIb.ST
22%	GLENORE	GLEN.L
22%	HEIDELBERGCEMENT (XET)	HEIG.DE
22%	HEXPOL B	HPOLb.ST
22%	INFINEON TECHS. (XET)	IFXGn.DE
22%	LINDE (XET)	LINI.DE
22%	L'OREAL	OREP.PA
22%	NORSK HYDRO	NHY.OL
22%	PEUGEOT	PEUP.PA
22%	PKO BANK	PKO.WA
22%	SWEDBANK A	SWEDa.ST
22%	SWEDISH ORPHAN BIOVITRUM	SOBIV.ST
22%	WFD UNIBAIL RODAMCO STAMM	URW.AS
17%	ASSICURAZIONI GENERALI	GASI.MI
17%	AXA	AXAF.PA
17%	BARCLAYS	BARC.L
17%	DANSKE BANK	DANSKE.CO
17%	DEUTSCHE LUFTHANSA (XET)	LHAG.DE
17%	FIAT CHRYSLER AUTOS.	FCHA.MI
17%	HEINEKEN HOLDING	HEIO.AS
17%	INDUSTRIVARDEN A	INDUa.ST
17%	MICHELIN	MICP.PA
17%	PLKNC.NAFTOWY ORLEN	PKN.WA
17%	SIEMENS (XET) HEALTHINEER	SHLG.DE
17%	SKF B	SKFb.ST
17%	STANDARD CHARTERED	STAN.L
11%	ALFA LAVAL	ALFA.ST
11%	ASSOCIATED BRIT.FOODS	ABF.L
11%	CONTINENTAL (XET)	CONG.DE
11%	EDF	EDF.PA
11%	FRESENIUS (XET)	FREG.DE
11%	FRESENIUS MED.CARE (XET)	FMEG.DE
11%	HUSQVARNA B	HUSQb.ST
11%	LLOYDS BANKING GROUP	LLOY.L
11%	RECKITT BENCKISER GROUP	RB.L
11%	SAMPO 'A'	SAMPO.HE
11%	TESCO	TSCO.L
11%	TGS-NOPEC GEOPHS.	TGS.OL
11%	TOTAL	TOTF.PA

11%	WIRECARD (XET)	WDIG.DE
6%	ABN AMRO BANK	ABNd.AS
6%	ANGLO AMERICAN	AAL.L
6%	BANCO SANTANDER	SAN.MC
6%	BBV.ARGENTARIA	BBVA.MC
6%	BHP GROUP	BHPB.L
6%	DAIMLER (XET)	DAIGn.DE
6%	DASSAULT SYSTEMES	DAST.PA
6%	E ON N (XET)	EONGn.DE
6%	EQUINOR	EQNR.OL
6%	HEXAGON B	HEXAb.ST
6%	ING GROEP	INGA.AS
6%	JYSKE BANK	JYSK.CO
6%	KBC GROUP	KBC.BR
6%	KERING	HPOLb.ST
6%	KGHM	KGH.WA
6%	KINDRED GROUP SDR	KINDSdb.ST
6%	NORDEA BANK (OME)	NDASE.ST
6%	RIO TINTO	RIO.L
6%	ROYAL BANK OF SCTL.GP.	RBS.L
6%	ROYAL DUTCH SHELL A	RDSa.AS
6%	SANDVIK	SAND.ST
6%	SANTANDER BANK POLSKA	SPL1.WA
6%	SECURITAS B	SECUB.ST
6%	SIEMENS (XET)	SIEGn.DE
6%	SIMCORP	SIM.CO
6%	SKANDINAVISKA ENSKILDA BANK	SEBa.ST
6%	STOREBRAND	STB.OL
6%	SUBSEA 7	SUBC.OL
6%	SVENSKA HANDELSBANKEN A	SHBa.ST
6%	SWEDISH MATCH	SWMA.ST
6%	TELEFONICA	TEF.MC
6%	VESTAS WINDSYSTEMS	VVWS.CO
6%	VOLVO B	VOLVb.ST
0%	BP	BP.L
0%	BT GROUP	BT.L
0%	CHRISTIAN HANSEN HOLDING	CHRH.CO
0%	ERICSSON B	ERICb.ST
0%	GN STORE NORD	GN.CO
0%	HSBC HOLDINGS	HSBAL
0%	ISS	ISS.CO
0%	NIBE INDUSTRIER B	NIBEb.ST
0%	NOVOZYMES B	NZYMb.CO
0%	POLISH OIL AND GAS	PGN.WA
0%	PRUDENTIAL	PRU.L
0%	PZU GROUP	PZU.WA
0%	REPSOL YPF	REP.MC
0%	SAAB B	SAABb.ST
0%	THYSSENKRUPP (XET)	TKAG.DE
0%	YARA INTERNATIONAL	YAR.OL

# STOXX 200 stocks – listed alphabetically (A-Infineon)

SCORE	COMPANY	RIC	PRICE	LT	MT	ST
44%	A P MOLLER MAERSK B	MAERSKb.CO	7'462.00	O	uo	uu+
78%	AAK	AAK.ST	195.70	+	+	+
6%	ABN AMRO BANK	ABNd.AS	16.50	-	-	uo
78%	ACCOR	ACCP.PA	38.57	+	+	uu+
28%	ADIDAS (XET)	ADSGn.DE	259.50	+	-	uo
28%	ADYEN	ADYEN.AS	668.00	-	uo	uu+
22%	AENA SME	AENA.MC	163.90	do	-	u+
100%	AIR LIQUIDE	AIRP.PA	123.45	+	+	+
61%	AIRBUS	AIR.PA	124.78	+	O	uu+
28%	AKER BP	AKERBP.OL	235.90	-	O	uu+
11%	ALFA LAVAL	ALFA.ST	174.05	-	-	uu+
22%	ALLIANZ (XET)	ALVG.DE	201.15	O	-	uu+
22%	AMADEUS IT GROUP	AMA.MC	68.28	-	uo	uo
67%	AMBU B	AMBUb.CO	107.55	-	+	+
6%	ANGLO AMERICAN	AAL.L	1'739.60	-	-	uo
83%	ANHEUSER-BUSCH INBEV	ABI.BR	86.57	+	+	-
22%	ARCELORMITTAL	MT.AS	12.20	-	uo	uo
94%	ASML HOLDING	ASML.AS	189.14	+	+	uu+
78%	ASSA ABLOY B	ASSAb.ST	215.60	+	+	uo
17%	ASSICURAZIONI GENERALI	GASI.MI	16.18	O	-	uo
11%	ASSOCIATED BRIT.FOODS	ABF.L	2'299.00	O	-	-
94%	ASTRAZENECA	AZN.L	7'281.00	+	+	+
33%	ATLAS COPCO A	ATCOa.ST	275.00	+	-	uo
17%	AXA	AXAF.PA	21.72	O	-	uo
6%	BANCO SANTANDER	SAN.MC	3.55	-	-	uo
22%	BANK POLSKA KASA OPIEKI	PEO.WA	98.30	O	-	uu+
17%	BARCLAYS	BARC.L	140.60	uo	-	uo
39%	BASF (XET)	BASFn.DE	57.97	uo	O	uu+
100%	BAYER (XET)	BAYGn.DE	66.30	+	+	+
6%	BBV.ARGENTARIA	BBVA.MC	4.27	-	-	uo
83%	BEIERSDORF (XET)	BEIG.DE	110.50	+	+	+
6%	BHP GROUP	BHPB.L	1'781.40	-	-	uo
22%	BMW (XET)	BMWG.DE	60.36	-	uo	uo
39%	BNP PARIBAS	BNPP.PA	40.80	O	uo	uu+
33%	BOLIDEN ORD SHS	BOL.ST	200.45	uo	O	uo
0%	BP	BP.L	500.10	-	-	-
89%	BRITISH AMERICAN TOBACCO	BATS.L	3'036.50	+	+	do
0%	BT GROUP	BT.L	167.38	-	-	-
100%	CARLSBERG B	CARLb.CO	982.00	+	+	+
100%	CASTELLUM	CAST.ST	200.00	+	+	+
89%	CD PROJECT RED	CDR.WA	236.00	+	+	uu+
33%	CHRISTIAN DIOR	DIOR.PA	446.00	+	-	uu+
0%	CHRISTIAN HANSEN HOLDING	CHRH.CO	545.60	-	-	-
100%	COLOPLAST B	COLOb.CO	835.20	+	+	u+
94%	COMPASS GROUP	CPG.L	2'058.00	+	+	+
11%	CONTINENTAL (XET)	CONG.DE	106.80	O	-	-
22%	COVESTRO (XET)	iCOV.DE	38.85	-	O	uo
67%	CRH (DUB)	CRH.I	29.03	+	uu+	uu+
6%	DAIMLER (XET)	DAIGN.DE	41.97	-	-	uo
100%	DANONE	DANO.PA	80.54	+	+	+

SCORE	COMPANY	RIC	PRICE	LT	MT	ST
17%	DANSKE BANK	DANSKE.CO	91.80	O	-	uo
6%	DASSAULT SYSTEMES	DAST.PA	128.25	-	-	uo
28%	DEUTSCHE BANK (XET)	DBKGn.DE	6.33	O	O	-
83%	DEUTSCHE BOERSE (XET)	DB1Gn.DE	129.85	+	+	+
67%	DEUTSCHE POST (XET)	DPWGN.DE	28.88	+	u+	uu+
72%	DEUTSCHE TELEKOM (XET)	DTEGn.DE	14.98	uu+	uu+	uu+
78%	DIAGEO	DGE.L	3'446.00	+	+	+
22%	DNB	DNB.OL	148.65	-	uo	uo
28%	DOMETIC GROUP	DOMETIC.ST	84.92	+	-	uo
67%	DSV 'B'	DSV.CO	635.20	+	uo	uu+
6%	E ON N (XET)	EONGn.DE	8.40	-	-	uo
11%	EDF	EDF.PA	10.79	-	-	uu+
44%	ELECTROLUX B	ELUXb.ST	225.70	O	O	+
22%	ELEKTA B	EKTAb.ST	127.65	+	dd-	d-
100%	ENDESA	ELE.MC	23.53	+	+	+
100%	ENEL	ENEI.MI	6.36	+	uu+	u+
78%	ENGIE	ENGIE.PA	13.63	u+	u+	uu+
22%	ENI	ENI.MI	13.27	-	uo	uo
83%	EPIROC A	EPIRa.ST	99.74	u+	u+	uu+
6%	EQUINOR	EQNR.OL	148.70	-	-	uo
0%	ERICSSON B	ERICb.ST	81.20	-	-	d-
100%	ESSILORLUXOTTICA	ESLX.PA	128.55	+	+	+
83%	ESSITY B	ESSITYb.ST	293.30	+	uu+	+
89%	FABEGE	FABG.ST	157.15	+	+	+
100%	FASTIGHETS BALDER B	BALDb.ST	346.20	+	+	+
39%	FERRARI (MIL)	RACE.MI	141.70	+	d-	uo
17%	FIAT CHRYSLER AUTOS.	FCHA.MI	11.26	O	-	uo
11%	FRESENIUS (XET)	FREG.DE	43.47	-	-	uu+
11%	FRESENIUS MED.CARE (XET)	FMEG.DE	60.78	-	-	uu+
100%	GENMAB	GEN.CO	1'373.00	+	+	+
22%	GETINGE B	GETIb.ST	137.40	+	-	d-
33%	GJENSIDIGE FORSIKRING	GJFS.OL	169.90	+	-	u+
83%	GLAXOSMITHKLINE	GSK.L	1'664.60	+	+	-
22%	GLENORE	GLEN.L	232.95	-	uo	uo
0%	GN STORE NORD	GN.CO	300.30	-	-	-
22%	HEIDELBERGCEMENT (XET)	HEIG.DE	61.14	O	-	uu+
33%	HEINEKEN	HEIN.AS	94.66	+	-	uu+
17%	HEINEKEN HOLDING	HEIO.AS	88.25	do	-	uo
28%	HENKEL PREF. (XET)	HNKG.DE	87.00	do	do	dd-
28%	HERMES INTL.	HRMS.PA	613.20	+	-	uo
6%	HEXAGON B	HEXAb.ST	442.70	-	-	uo
22%	HEXPOL B	HPOLb.ST	69.50	-	O	uo
0%	HSBC HOLDINGS	HSBA.L	603.70	-	-	-
11%	HUSQVARNA B	HUSQb.ST	75.22	do	-	-
100%	IBERDROLA	IBE.MC	9.30	+	+	+
100%	ICA GRUPPEN	ICAA.ST	483.80	+	+	+
78%	IMPERIAL BRANDS	IMB.L	2'111.50	uo	+	uu+
78%	INDITEX	ITX.MC	26.61	+	+	uu+
17%	INDUSTRIVARDEN A	INDUa.ST	204.80	O	-	uo
22%	INFINEON TECHS. (XET)	IFXGn.DE	15.76	-	do	uo

# STOXX 200 stocks – listed alphabetically (ING-Z)

SCORE	COMPANY	RIC	PRICE	LT	MT	ST
6%	ING GROEP	INGA.AS	8.49	-	-	uo
100%	INNOGY (XET)	IGY.DE	43.84	+	+	u+
39%	INTESA SANPAOLO	ISP.MI	1.91	o	o	uu+
44%	INVESTOR B	INVEb.ST	441.00	+	uo	uo
0%	ISS	ISS.CO	167.60	-	-	-
6%	JYSKE BANK	JYSK.CO	196.75	-	-	uo
6%	KBC GROUP	KBC.BR	52.40	-	-	uo
6%	KERING	PRTP.PA	437.95	-	-	o
6%	KGHM	KGH.WA	77.88	-	-	uo
6%	KINDRED GROUP SDR	KINDsdb.ST	50.02	-	-	o
89%	KINNEVIK B	KINVb.ST	250.40	+	+	+
83%	KONE 'B'	KNEBV.HE	52.00	+	+	+
78%	KONINKLIJKE AHOLD DELHA	AD.AS	20.84	uo	+	uu+
22%	LINDE (XET)	LINI.DE	170.25	do	-	uu+
11%	LLOYDS BANKING GROUP	LLOY.L	49.93	-	-	uu+
94%	LOOMIS B	LOOMB.ST	333.60	+	+	u+
22%	L'OREAL	OREP.PA	237.60	uo	-	uu+
17%	DEUTSCHE LUFTHANSA (XET)	LHAG.DE	13.28	-	uo	-
44%	LUNDIN PETROLEUM	LUPE.ST	287.90	-	u+	uu+
33%	LVMH	LVMH.PA	356.85	+	-	uu+
17%	MICHELIN	MICP.PA	93.50	o	-	uo
89%	MERCK KGAA (XET)	MRCG.DE	95.92	+	+	+
67%	MUENCHENER RUCK. (XET)	MUVGn.DE	219.80	+	uo	+
100%	NATIONAL GRID	NG.L	867.90	+	+	+
33%	NATURGY ENERGY	NTGY.MC	23.92	-	o	+
89%	NESTE	NESTE.HE	30.48	+	+	+
0%	NIBE INDUSTRIER B	NIBEb.ST	122.20	dd-	-	-
61%	NOKIA	NOKIA.HE	4.71	o	+	-
6%	NORDEA BANK (OME)	NDASE.ST	59.50	-	-	o
22%	NORSK HYDRO	NHY.OL	26.87	-	uo	uo
100%	NOVO NORDISK 'B'	NOVOb.CO	344.00	+	+	+
0%	NOVOZYMES B	NZYMb.CO	279.20	-	-	-
61%	ORANGE	ORAN.PA	13.60	uo	uu+	uu+
83%	ORKLA	ORK.OL	78.98	+	+	+
100%	ORSTED	ORSTED.CO	678.00	+	+	+
33%	PANDORA	PNDORA.CO	233.10	o	o	uo
72%	PERNOD-RICARD	PERP.PA	158.10	+	uu+	uu+
22%	PEUGEOT	PEUP.PA	19.37	-	o	uo
100%	PHILIPS ELTN.KONINKLIJKE	PHG.AS	42.00	+	+	u+
22%	PKO BANK	PKO.WA	39.44	o	-	uu+
17%	PLKNC.NAFTOWY ORLEN	PKN.WA	90.12	-	uo	-
0%	POLISH OIL AND GAS	PGN.WA	4.83	-	-	-
0%	PRUDENTIAL	PRU.L	1'399.00	d-	-	-
0%	PZU GROUP	PZU.WA	37.64	d-	-	-
11%	RECKITT BENCKISER GROUP	RB.L	6'193.00	-	-	uu+
83%	RELX	REL.L	1'947.50	+	+	+
0%	REPSOL YPF	REP.MC	12.82	-	-	-
6%	RIO TINTO	RIO.L	4'065.00	-	-	uo
6%	ROYAL BANK OF SCTL.GP.	RBS.L	184.65	-	d-	uo
6%	ROYAL DUTCH SHELL A	RDSa.AS	25.34	-	-	uo

SCORE	COMPANY	RIC	PRICE	LT	MT	ST
94%	RWE (XET)	RWEG.DE	25.55	+	+	+
0%	SAAB B	SAABb.ST	270.70	-	d-	-
50%	SAFRAN	SAF.PA	126.95	+	uo	uu+
89%	SALMAR	SALM.OL	438.50	u+	+	u+
11%	SAMPO 'A'	SAMPO.HE	37.27	-	-	+
6%	SANDVIK	SAND.ST	135.55	-	-	uo
89%	SANOFI	SASY.PA	77.24	uu+	uu+	uu+
6%	SANTANDER BANK POLSKA	SPL1.WA	296.80	-	-	uo
33%	SAP (XET)	SAPG.DE	107.98	uu+	-	u+
89%	SCHIBSTED A	SBSTA.OL	258.40	+	+	+
28%	SCHNEIDER ELECTRIC	SCHN.PA	73.06	+	-	uo
6%	SECURITAS B	SECUB.ST	144.35	-	-	uo
6%	SIEMENS (XET)	SIEGn.DE	87.23	-	-	uo
17%	SIEMENS (XET) HEALTHINEER	SHLG.DE	36.25	-	uo	-
6%	SIMCORP	SIM.CO	577.50	-	-	uo
6%	SKANDINAVISKA ENSKILDA B	SEBa.ST	83.40	-	-	uo
94%	SKANSKA B	SKAb.ST	177.35	+	+	uu+
17%	SKF B	SKFb.ST	148.20	o	-	uo
44%	SOCIETE GENERALE	SOGN.PA	22.38	-	u+	uu+
17%	STANDARD CHARTERED	STAN.L	618.40	o	-	uo
6%	STOREBRAND	STB.OL	54.14	-	-	uo
6%	SUBSEA 7	SUBC.OL	86.38	-	-	uo
39%	SVENSKA CELLULOZA AKTIEB	SCAb.ST	77.16	uo	uo	uu+
6%	SVENSKA HANDELSBANKEN A	SHBa.ST	85.26	-	-	o
22%	SWEDBANK A	SWEDa.ST	125.75	-	uo	o
6%	SWEDISH MATCH	SWMA.ST	374.20	-	-	o
22%	SWEDISH ORPHAN BIOVITRU	SOBIV.ST	177.95	-	o	uo
100%	TELE2 B	TEL2b.ST	143.75	+	+	+
6%	TELEFONICA	TEF.MC	6.11	-	-	uo
94%	TELENOR	TEL.OL	184.80	+	+	+
44%	TELIA COMPANY	TELIA.ST	41.52	u+	o	uo
11%	TESCO	TSCO.L	219.70	-	-	u+
11%	TGS-NOPEC GEOPHS.	TGS.OL	208.30	-	-	uu+
50%	THALES	TCFP.PA	103.10	-	u+	uu+
0%	THYSSENKRUPP (XET)	TKAG.DE	9.72	-	-	-
11%	TOTAL	TOTF.PA	44.15	-	-	uu+
39%	TRELLEBORG B	TRELb.ST	126.85	uo	o	uu+
28%	TRYG	TRYG.CO	202.00	+	-	o
22%	WFD UNIBAIL RODAMCO STA	URW.AS	127.00	-	uo	o
83%	UNILEVER (UK)	ULVR.L	5'091.00	+	uu+	+
83%	UNILEVER	UNA.AS	54.35	uu+	uu+	u+
6%	VESTAS WINDSYSTEMS	VWS.CO	508.60	d-	-	uo
100%	VINCI	SGEF.PA	97.46	+	+	+
100%	VIVENDI	VIV.PA	25.67	+	+	+
94%	VODAFONE GROUP	VOD.L	150.32	+	+	+
33%	VOLKSWAGEN PREF. (XET)	VOWG_p.DE	142.32	o	uo	uo
6%	VOLVO B	VOLVb.ST	129.80	-	-	uo
56%	VONOVA (XET)	VNA.DE	44.58	o	u+	+
11%	WIRECARD (XET)	WDIG.DE	141.00	o	-	-
0%	YARA INTERNATIONAL	YAR.OL	374.00	dd-	-	-

# Eurostoxx 50 constituent stocks - listed to Score (left) and alphabetically (right)

100%	AIR LIQUIDE
100%	BAYER (XET)
100%	DANONE
100%	ENEL
100%	ESSILORLUXOTTICA
100%	IBERDROLA
100%	PHILIPS ELTN.KONINKLIJKE
100%	VINCI
100%	VIVENDI
94%	ASML HOLDING
89%	SANOFI
83%	ANHEUSER-BUSCH INBEV
83%	UNILEVER
78%	ENGIE
78%	INDITEX
78%	KONINKLIJKE AHOLD DELHAI
72%	DEUTSCHE TELEKOM (XET)
67%	CRH (DUB)
67%	DEUTSCHE POST (XET)
67%	MUENCHENER RUCK. (XET)
61%	AIRBUS
61%	NOKIA
61%	ORANGE
50%	SAFRAN
44%	SOCIETE GENERALE
39%	BASF (XET)
39%	BNP PARIBAS
39%	INTESA SANPAOLO
33%	LVMH
33%	SAP (XET)
33%	VOLKSWAGEN PREF. (XET)
28%	ADIDAS (XET)
28%	SCHNEIDER ELECTRIC
22%	ALLIANZ (XET)
22%	AMADEUS IT GROUP
22%	BMW (XET)
22%	ENI
22%	LINDE (XET)
22%	L'OREAL
22%	WFD UNIBAIL RODAMCO STA
17%	AXA
11%	FRESENIUS (XET)
11%	TOTAL
6%	BANCO SANTANDER
6%	BBV.ARGENTARIA
6%	DAIMLER (XET)
6%	ING GROEP
6%	KERING
6%	SIEMENS (XET)
6%	TELEFONICA

SCORE	COMPANY	RIC	PRICE	LT	MT	ST	COMMENT
83%	ANHEUSER-BUSCH INBEV	ABI.BR	86.57	+	+	-	
28%	ADIDAS (XET)	ADSGn.DE	259.50	+	-	uo	The bubble could be bursting. Sell signals if 251 and 244 are broken.
61%	AIRBUS	AIR.PA	124.78	+	o	uu+	Sell signals if the supports at 118 and 113 are broken.
100%	AIR LIQUIDE	AIRP.PA	123.45	+	+	+	New downgradings if the supports at 120 and 117 are broken.
22%	ALLIANZ (XET)	ALVG.DE	201.15	o	-	uu+	
22%	AMADEUS IT GROUP	AMA.MC	68.28	-	uo	uo	
94%	ASML HOLDING	ASML.AS	189.14	+	+	uu+	
17%	AXA	AXAF.PA	21.72	o	-	uo	
39%	BASF (XET)	BASFn.DE	57.97	uo	o	uu+	
100%	BAYER (XET)	BAYGn.DE	66.30	+	+	+	
6%	BBV.ARGENTARIA	BBVA.MC	4.27	-	-	uo	
22%	BMW (XET)	BMWGn.DE	60.36	-	uo	uo	Testing the mega support at 59.50 / 57.
39%	BNP PARIBAS	BNPP.PA	40.80	o	uo	uu+	
67%	CRH (DUB)	CRH.I	29.03	+	uu+	uu+	
6%	DAIMLER (XET)	DAIGn.DE	41.97	-	-	uo	
100%	DANONE	DANO.PA	80.54	+	+	+	Could have peaked at 81. Watching the supports at 77, 76.20 and 74.80.
67%	DEUTSCHE POST (XET)	DPWGn.DE	28.88	+	u+	uu+	
72%	DEUTSCHE TELEKOM (XET)	DTEGn.DE	14.98	uu+	uu+	uu+	Must rise above 15.25 to signal 15.75 or 16.55.
100%	ENEL	ENEL.MI	6.36	+	uu+	u+	
78%	ENGIE	ENGIE.PA	13.63	u+	u+	uu+	
22%	ENI	ENI.MI	13.27	-	uo	uo	
100%	ESSILORLUXOTTICA	ESLX.PA	128.55	+	+	+	Close to long-term resistance 132 / 135. Next resistance is 155.
11%	FRESENIUS (XET)	FREG.DE	43.47	-	-	uu+	
100%	IBERDROLA	IBE.MC	9.30	+	+	+	Could reach 9.50 or 10.
78%	INDITEX	ITX.MC	26.61	+	+	uu+	
6%	ING GROEP	INGA.AS	8.49	-	-	uo	
39%	INTESA SANPAOLO	ISP.MI	1.91	o	o	uu+	
6%	KERING	PRTP.PA	437.95	-	-	o	
78%	KONINKLIJKE AHOLD DELHAI	AD.AS	20.84	uo	+	uu+	
22%	LINDE (XET)	LINI.DE	170.25	do	-	uu+	
22%	L'OREAL	OREP.PA	237.60	uo	-	uu+	
33%	LVMH	LVMH.PA	356.85	+	-	uu+	Sell signal if the support at 337 is broken. Lower support is 318.
67%	MUENCHENER RUCK. (XET)	MUVGn.DE	219.80	+	uo	+	
61%	NOKIA	NOKIA.HE	4.71	o	+	-	
61%	ORANGE	ORAN.PA	13.60	uo	uu+	uu+	
100%	PHILIPS ELTN.KONINKLIJKE	PHG.AS	42.00	+	+	u+	
50%	SAFRAN	SAF.PA	126.95	+	uo	uu+	
89%	SANOFI	SASY.PA	77.24	uu+	uu+	uu+	Bust rise above 79.50 to signal 84.50 or 92.
6%	BANCO SANTANDER	SAN.MC	3.55	-	-	uo	
33%	SAP (XET)	SAPG.DE	107.98	uu+	-	u+	
28%	SCHNEIDER ELECTRIC	SCHN.PA	73.06	+	-	uo	
6%	SIEMENS (XET)	SIEGn.DE	87.23	-	-	uo	New support at 84.50.
44%	SOCIETE GENERALE	SOGN.PA	22.38	-	u+	uu+	
6%	TELEFONICA	TEF.MC	6.11	-	-	uo	
11%	TOTAL	TOTF.PA	44.15	-	-	uu+	
22%	WFD UNIBAIL RODAMCO STA	URW.AS	127.00	-	uo	o	
83%	UNILEVER	UNA.AS	54.35	uu+	uu+	u+	Will signal 58.50 if 55.50 is broken.
100%	VINCI	SGEF.PA	97.46	+	+	+	
100%	VIVENDI	VIV.PA	25.67	+	+	+	
33%	VOLKSWAGEN PREF. (XET)	VOWG_p.DE	142.32	o	uo	uo	

# S&P 200 stocks – listed according to the Score (range from 100% to 0%, 40%-60% is neutral)

100%	ACCENTURE CLASS A	ACN
100%	ALLSTATE ORD SHS	ALL
100%	AMGEN	AMGN.O
100%	APPLE	AAPL.O
100%	AT&T	T
100%	BAXTER INTL.	BAX
100%	BOOKING HOLDINGS	BKNG.O
100%	COCA COLA	KO
100%	COMCAST A	CMCSA.O
100%	CONSTELLATION BRAN	STZ
100%	COSTCO WHOLESALE	COST.O
100%	CROWN CASTLE INTL.	CCI
100%	CVS HEALTH	CVS
100%	DANAHER	DHR
100%	DOMINION ENERGY	D
100%	DUKE ENERGY	DUK
100%	ECOLAB	ECL
100%	EQUINIX REIT	EQIX.O
100%	ESTEE LAUDER COS.'A'	EL
100%	FIDELITY NAT.INFO.SVS	FIS
100%	GENERAL DYNAMICS	GD
100%	GENERAL MILLS	GIS
100%	ILLINOIS TOOL WORKS	ITW
100%	INTERCONTINENTAL EX	ICE
100%	KIMBERLY-CLARK	KMB
100%	LAM RESEARCH	LRCX.O
100%	MASTERCARD	MA
100%	MCDONALDS	MCD
100%	MEDTRONIC	MDT
100%	MICRON TECHNOLOGY	MU.O
100%	MICROSOFT	MSFT.O
100%	MOODY'S	MCO
100%	NEXTERA ENERGY	NEE
100%	NVIDIA	NVDA.O
100%	PHILIP MORRIS INTL.	PM
100%	PROCTER & GAMBLE	PG
100%	PROLOGIS	PLD
100%	PUBLIC STORAGE	PSA
100%	S&P GLOBAL	SPGI.K
100%	STRYKER	SYK
100%	TARGET	TGT
100%	TEXAS INSTRUMENTS	TXN.O
100%	VISA 'A'	V
100%	WALMART	WMT
100%	WELLTOWER	WELL.K
100%	ZOETIS	ZTS
94%	ALPHABET 'C'	GOOG.O
94%	AMERICAN TOWER	AMT
94%	BRISTOL MYERS SQUIB	BMY
94%	CELGENE	CELG.O

94%	EBAY	EBAY.O
94%	EDWARDS LIFESCIENCE	EW
94%	FISERV	FISV.O
94%	NORTHROP GRUMMAN	NOC
94%	SHERWIN-WILLIAMS	SHW
94%	STARBUCKS	SBUX.O
94%	UNITED PARCEL SER.'B'	UPS
89%	AUTOMATIC DATA PRO	ADP.O
89%	BOSTON SCIENTIFIC	BSX
89%	O REILLY AUTOMOTIVE	ORLY.O
89%	ONEOK	OKE
89%	SYSCO	SY
89%	VERTEX PHARMS.	VRTX.O
89%	YUM! BRANDS	YUM
83%	ACTIVISION BLIZZARD	ATVI.O
83%	AIR PRDS.& CHEMS.	APD
83%	AMER.ELEC.PWR.	AEP
83%	AON CLASS A	AON
83%	CME GROUP	CME.O
83%	COLGATE-PALM.	CL
83%	DOLLAR GENERAL	DG
83%	HUMANA	HUM
83%	JOHNSON CONTROLS I	JCI
83%	LOCKHEED MARTIN	LMT
83%	MERCK & COMPANY	MRK
83%	MONDELEZ INTERNATI	MDLZ.O
83%	PEPSICO	PEP.O
83%	SEMPRA EN.	SRE
83%	WASTE MANAGEMENT	WM
78%	ABBOTT LABORATORIE	ABT
78%	APPLIED MATS.	AMAT.O
78%	CHUBB	CB
78%	IQVIA HOLDINGS	IQV
78%	PHILLIPS 66	PSX
78%	SOUTHERN	SO
72%	ALLERGAN	AGN
72%	BECTON DICKINSON	BDX
72%	QUALCOMM	QCOM.O
67%	BIOGEN	BIIB.O
67%	INTUIT	INTU.O
67%	ROSS STORES	ROST.O
67%	VERIZON COMMUNICA	VZ
61%	AMERICAN INTL.GP.	AIG
61%	ANALOG DEVICES	ADI.O
61%	ELI LILLY	LLY
61%	HOME DEPOT	HD
56%	DELTA AIR LINES	DAL
50%	CHARTER COMMMS.CL.A	CHTR.O
50%	FACEBOOK CLASS A	FB.O
50%	KINDER MORGAN	KMI

50%	ROPER TECHNOLOGIES	ROP
50%	TRAVELERS COS.	TRV
44%	ADOBE (NAS)	ADBE.O
44%	AMERICAN EXPRESS	AXP
44%	GOLDMAN SACHS GP.	GS
44%	MARSH & MCLENNAN	MMC
39%	BROADCOM	AVGO.O
39%	DEERE	DE
39%	EATON	ETN
39%	TE CONNECTIVITY	TEL
33%	ADVANCED MICRO DEV	AMD.O
33%	AFLAC	AFL
33%	CIGNA	CI
33%	HONEYWELL INTL.	HON
33%	JOHNSON & JOHNSON	JNJ
33%	PAYPAL HOLDINGS	PYPL.O
28%	ALEXION PHARMS.	ALXN.O
28%	ALTRIA GROUP	MO
28%	AMPHENOL 'A'	APH
28%	BOEING	BA
28%	DOW CHEMICAL	DOW
28%	GENERAL MOTORS	GM
28%	INTEL	INTC.O
28%	INTERNATIONAL BUS.N	IBM
28%	LINDE	LIN
28%	MARRIOTT INTL.'A'	MAR.O
28%	PAYCHEX	PAYX.O
28%	PROGRESSIVE OHIO	PGR
28%	RAYTHEON 'B'	RTN
28%	SALESFORCE.COM	CRM
28%	SOUTHWEST AIRLINES	LUV
28%	TRANSOCEAN	RIG
28%	UNION PACIFIC	UNP
28%	VALERO ENERGY	VLO
28%	XILINX	XLNX.O
22%	3M	MMM
22%	COGNIZANT TECH.SLT	CTSH.O
22%	DOVER	DOV
22%	ELECTRONIC ARTS	EA.O
22%	EMERSON ELECTRIC	EMR
22%	EXXON MOBIL	XOM
22%	FEDEX	FDX
22%	MARATHON PETROLEU	MPC
22%	NIKE 'B'	NKE
22%	SCHLUMBERGER	SLB
22%	TJX	TJX
22%	US BANCORP	USB
17%	ABBVIE	ABBV.K
17%	ALLIANCE DATA SYSTE	ADS

17%	BANK OF AMERICA	BAC
17%	BANK OF NEW YORK M	BK
17%	BB&T	BBT
17%	BLACKROCK	BLK
17%	CITIGROUP	C
17%	FORD MOTOR	F
17%	INTUITIVE SURGICAL	ISRG.O
17%	JP MORGAN CHASE & C	JPM
17%	LOWE'S COMPANIES	LOW
17%	METLIFE	MET
17%	MORGAN STANLEY	MS
17%	OCCIDENTAL PTL.	OXY
17%	ORACLE	ORCL.K
17%	PUB.SER.ENTER.GP.	PEG
17%	REGENCY CENTERS	REG.O
17%	REGENERON PHARMS.	REGN.O
17%	UNITED TECHNOLOGIE	UTX
17%	UNITEDHEALTH GROU	UNH
17%	WALGREENS BOOTS AL	WBA.O
17%	WELLS FARGO & CO	WFC
11%	AMAZON.COM	AMZN.O
11%	BERKSHIRE HATHAWA	BRKb
11%	CAMECO (NYS)	CCJ
11%	CHEVRON	CVX
11%	EXELON	EXC
11%	GENERAL ELECTRIC	GE
11%	GILEAD SCIENCES	GILD.O
11%	MONSTER BEVERAGE	MNST.O
11%	NETFLIX	NFLX.O
11%	PNC FINL.SVS.GP.	PNC
6%	AUTODESK	ADSK.O
6%	CATERPILLAR	CAT
6%	CHARLES SCHWAB	SCHW.K
6%	CONOCOPHILLIPS	COP
6%	CSX	CSX.O
6%	EOG RES.	EOG
6%	FORTIVE	FTV
6%	HCA HEALTHCARE	HCA
6%	HP	HPQ
6%	LYONDELLBASELL IND	LYB
6%	NORFOLK SOUTHERN	NSC
6%	PFIZER	PFE
6%	PRUDENTIAL FINL.	PRU
6%	V F	VFC
6%	WILLIAMS	WMB
0%	ANTHEM	ANTM.K
0%	CISCO SYSTEMS	CSCO.O
0%	ILLUMINA	ILMN.O
0%	KRAFT HEINZ	KHC.O
0%	SIMON PROPERTY GRO	SPG

# S&P 200 stocks – listed alphabetically (A-HP)

SCORE	COMPANY	RIC	PRICE	LT	MT	ST
22%	3M	MMM	162.95	-	o	uo
78%	ABBOTT LABORATORIE	ABT	85.56	+	u+	uo
17%	ABBVIE	ABBV.K	66.56	-	-	u+
100%	ACCENTURE CLASS A	ACN	195.18	+	u+	uu+
83%	ACTIVISION BLIZZARD	ATVI.O	47.92	+	+	uu+
44%	ADOBE (NAS)	ADBE.O	287.97	+	uo	uo
33%	ADVANCED MICRO DEV	AMD.O	31.48	+	dd-	+
33%	AFLAC	AFL	52.68	+	-	u+
83%	AIR PRDS.& CHEMS.	APD	228.57	+	+	+
28%	ALEXION PHARMS.	ALXN.O	112.68	-	uo	u+
72%	ALLERGAN	AGN	159.25	+	+	o
17%	ALLIANCE DATA SYSTE	ADS	136.54	d-	do	-
100%	ALLSTATE ORD SHS	ALL	103.99	+	u+	uu+
94%	ALPHABET 'C'	GOOG.O	1'198.45	+	+	uu+
28%	ALTRIA GROUP	MO	46.70	-	uo	uu+
11%	AMAZON.COM	AMZN.O	1'816.12	-	-	uu+
83%	AMER.ELEC.PWR.	AEP	90.55	+	+	+
44%	AMERICAN EXPRESS	AXP	124.40	+	d-	uu+
61%	AMERICAN INTL.GP.	AIG	54.81	+	o	uo
94%	AMERICAN TOWER	AMT	225.19	+	+	+
100%	AMGEN	AMGN.O	206.00	+	+	+
28%	AMPHENOL 'A'	APH	88.20	-	uo	uu+
61%	ANALOG DEVICES	ADI.O	111.17	+	o	uu+
0%	ANTHEM	ANTM.K	273.41	d-	-	-
83%	AON CLASS A	AON	194.30	+	uu+	uu+
100%	APPLE	AAPL.O	210.35	+	+	uu+
78%	APPLIED MATS.	AMAT.O	47.10	+	+	uo
100%	AT&T	T	35.38	+	+	+
6%	AUTODESK	ADSK.O	146.18	-	-	uo
89%	AUTOMATIC DATA PRO	ADP.O	168.96	+	+	u+
17%	BANK OF AMERICA	BAC	27.27	-	uo	-
17%	BANK OF NEW YORK M	BK	42.72	-	o	-
100%	BAXTER INTL.	BAX	87.87	+	+	+
17%	BB&T	BBT	46.96	uo	-	uo
72%	BECTON DICKINSON	BDX	251.48	+	+	uu+
11%	BERKSHIRE HATHAWAY	BRKb	200.94	-	-	uo
67%	BIOGEN	BIIB.O	235.72	uo	u+	uo
17%	BLACKROCK	BLK	425.56	o	-	uo
28%	BOEING	BA	333.78	-	uo	u+
100%	BOOKING HOLDINGS	BKNG.O	1'943.73	+	+	+
89%	BOSTON SCIENTIFIC	BSX	42.74	+	+	uu+
94%	BRISTOL MYERS SQUIB	BMY	47.46	u+	+	+
39%	BROADCOM	AVGO.O	278.78	o	o	uu+
11%	CAMECO (NYS)	CCJ	8.62	-	-	u+
6%	CATERPILLAR	CAT	117.36	-	-	uo
94%	CELGENE	CELG.O	95.22	+	+	+
6%	CHARLES SCHWAB	SCHW.K	37.70	-	-	uo
50%	CHARTER COMMS.CL.A	CHTR.O	388.42	+	-	uu+
11%	CHEVRON	CVX	117.31	do	d-	d-
78%	CHUBB	CB	155.74	+	+	+

SCORE	COMPANY	RIC	PRICE	LT	MT	ST
33%	CIGNA	CI	162.98	o	do	o
0%	CISCO SYSTEMS	CSCO.O	48.50	-	-	-
17%	CITIGROUP	C	64.31	o	-	uo
83%	CME GROUP	CME.O	216.70	+	+	+
100%	COCA COLA	KO	54.69	+	+	+
22%	COGNIZANT TECH.SLT	CTSH.O	61.86	-	o	uo
83%	COLGATE-PALM.	CL	73.08	+	uu+	uu+
100%	COMCAST A	CMCSA.O	44.00	+	uu+	uu+
6%	CONOCOPHILLIPS	COP	53.94	-	-	uo
100%	CONSTELLATION BRAN	STZ	201.80	+	u+	uu+
100%	COSTCO WHOLESALE	COST.O	275.61	+	u+	uu+
100%	CROWN CASTLE INTL.	CCI	144.86	+	+	+
6%	CSX	CSX.O	65.29	-	-	o
100%	CVS HEALTH	CVS	61.39	+	+	+
100%	DANAHER	DHR	141.71	+	uu+	uu+
39%	DEERE	DE	152.39	uo	uo	uu+
56%	DELTA AIR LINES	DAL	58.19	+	o	uo
83%	DOLLAR GENERAL	DG	138.10	+	uu+	u+
100%	DOMINION ENERGY	D	77.79	uu+	uu+	u+
22%	DOVER	DOV	91.24	uo	-	uu+
28%	DOW CHEMICAL	DOW	45.60	-	uo	uu+
100%	DUKE ENERGY	DUK	90.67	+	+	+
39%	EATON	ETN	79.14	uo	uo	uu+
94%	EBAY	EBAY.O	40.39	+	+	uu+
100%	ECOLAB	ECL	208.57	+	+	+
94%	EDWARDS LIFESCIENCE	EW	222.50	+	+	+
22%	ELECTRONIC ARTS	EA.O	90.91	-	o	do
61%	ELI LILLY	LLY	112.53	-	+	+
22%	EMERSON ELECTRIC	EMR	58.55	-	uo	uo
6%	EOG RES.	EOG	77.81	-	-	uo
100%	EQUINIX REIT	EQIX.O	555.73	+	+	+
100%	ESTEE LAUDER COS.'A'	EL	201.65	+	uu+	uu+
11%	EXELON	EXC	45.28	-	-	u+
22%	EXXON MOBIL	XOM	69.45	-	uo	uo
50%	FACEBOOK CLASS A	FB.O	186.17	+	uo	uu+
22%	FEDEX	FDX	158.31	-	o	uo
100%	FIDELITY NAT.INFO.SV	FIS	138.89	+	+	u+
94%	FISERV	FISV.O	107.75	+	+	+
17%	FORD MOTOR	F	9.03	o	-	o
6%	FORTIVE	FTV	70.08	-	-	uo
100%	GENERAL DYNAMICS	GD	187.59	+	+	uu+
11%	GENERAL ELECTRIC	GE	8.67	o	-	-
100%	GENERAL MILLS	GIS	55.20	+	+	+
28%	GENERAL MOTORS	GM	37.36	do	do	-
11%	GILEAD SCIENCES	GILD.O	64.11	-	-	uo
44%	GOLDMAN SACHS GP.	GS	202.20	+	uo	uo
6%	HCA HEALTHCARE	HCA	124.61	-	-	uo
61%	HOME DEPOT	HD	207.95	+	uo	uo
33%	HONEYWELL INTL.	HON	165.86	do	-	uo
6%	HP	HPQ	19.21	-	-	uo



# S&P 200 stocks – listed alphabetically (Humana-Z)

SCORE	COMPANY	RIC	PRICE	LT	MT	ST
83%	HUMANA	HUM	298.57	+	+	+
100%	ILLINOIS TOOL WORKS	ITW	153.03	+	uu+	uu+
0%	ILLUMINA	ILMN.O	288.65	-	-	d-
28%	INTEL	INTC.O	47.23	-	O	uu+
100%	INTERCONTINENTAL EX	ICE	92.85	+	+	+
28%	INTERNATIONAL BUS.M	IBM	135.04	O	uo	-
67%	INTUIT	INTU.O	274.23	+	+	uu+
17%	INTUITIVE SURGICAL	ISRG.O	495.50	-	O	-
78%	IQVIA HOLDINGS	IQV	156.72	+	+	uu+
33%	JOHNSON & JOHNSON	JNJ	132.25	-	uo	+
83%	JOHNSON CONTROLS I	JCI	42.64	+	+	+
17%	JP MORGAN CHASE & C	JPM	108.69	uo	-	uo
100%	KIMBERLY-CLARK	KMB	142.74	+	+	+
50%	KINDER MORGAN	KMI	20.41	+	-	u+
0%	KRAFT HEINZ	KHC.O	25.71	-	-	-
100%	LAM RESEARCH	LRCX.O	208.05	+	+	uu+
28%	LINDE	LIN	189.11	+	-	uo
83%	LOCKHEED MARTIN	LMT	380.47	+	+	+
17%	LOWE'S COMPANIES	LOW	95.05	-	O	-
6%	LYONDELLBASELL IND	LYB	74.88	-	-	uo
22%	MARATHON PETROLEU	MPC	47.81	-	uo	uo
28%	MARRIOTT INTL.'A'	MAR.O	130.57	+	-	uo
44%	MARSH & MCLENNAN	MMC	98.61	+	-	uu+
100%	MASTERCARD	MA	278.07	+	u+	uu+
100%	MCDONALDS	MCD	218.78	+	+	+
100%	MEDTRONIC	MDT	104.18	+	+	uu+
83%	MERCK & COMPANY	MRK	86.19	+	+	+
17%	METLIFE	MET	45.77	O	-	uo
100%	MICRON TECHNOLOGY	MU.O	45.01	+	+	uu+
100%	MICROSOFT	MSFT.O	138.41	+	u+	uu+
83%	MONDELEZ INTERNATI	MDLZ.O	54.56	+	u+	+
11%	MONSTER BEVERAGE	MNST.O	57.80	uo	-	-
100%	MOODY'S	MCO	217.53	+	+	+
17%	MORGAN STANLEY	MS	40.37	O	-	uo
11%	NETFLIX	NFLX.O	309.38	-	-	O
100%	NEXTERA ENERGY	NEE	218.96	+	+	+
22%	NIKE 'B'	NKE	81.13	-	uo	uo
6%	NORFOLK SOUTHERN	NSC	174.37	-	-	uo
94%	NORTHROP GRUMMAN	NOC	370.08	+	+	+
100%	NVIDIA	NVDA.O	170.78	uu+	u+	uu+
89%	O REILLY AUTOMOTIVE	ORLY.O	385.77	uu+	uu+	u+
17%	OCCIDENTAL PTL.	OXY	45.58	-	O	-
89%	ONEOK	OKE	70.91	+	+	+
17%	ORACLE	ORCL.K	53.87	uo	-	uo
28%	PAYCHEX	PAYX.O	82.29	do	-	uo
33%	PAYPAL HOLDINGS	PYPL.O	107.67	uu+	-	uu+
83%	PEPSICO	PEP.O	132.57	+	uu+	u+
6%	PFIZER	PFE	35.18	-	-	uo
100%	PHILIP MORRIS INTL.	PM	85.01	u+	+	uu+
78%	PHILLIPS 66	PSX	98.76	+	+	uo

SCORE	COMPANY	RIC	PRICE	LT	MT	ST
11%	PNC FINL.SVS.GP.	PNC	128.36	O	-	-
100%	PROCTER & GAMBLE	PG	120.24	+	+	+
28%	PROGRESSIVE OHIO	PGR	77.91	+	-	O
100%	PROLOGIS	PLD	83.86	+	+	+
6%	PRUDENTIAL FINL.	PRU	82.22	-	-	uo
17%	PUB.SER. ENTER.GP.	PEG	58.55	-	-	u+
100%	PUBLIC STORAGE	PSA	261.06	+	+	+
72%	QUALCOMM	QCOM.O	74.87	+	uu+	uu+
28%	RAYTHEON 'B'	RTN	179.19	do	do	d-
17%	REGENCY CENTERS	REG.O	68.14	-	-	u+
17%	REGENERON PHARMS.	REGN.O	298.38	-	O	-
50%	ROPER TECHNOLOGIES	ROP	362.37	+	-	u+
67%	ROSS STORES	ROST.O	104.09	+	+	uo
100%	S&P GLOBAL	SPGI.K	260.68	+	+	+
28%	SALESFORCE.COM	CRM	143.67	-	uo	uu+
22%	SCHLUMBERGER	SLB	34.10	-	uo	uo
83%	SEMPRA EN.	SRE	139.64	+	u+	+
94%	SHERWIN-WILLIAMS	SHW	528.44	+	+	+
0%	SIMON PROPERTY GRO	SPG	149.96	-	-	-
78%	SOUTHERN	SO	57.94	+	+	+
28%	SOUTHWEST AIRLINES	LUV	50.64	-	uo	uu+
94%	STARBUCKS	SBUX.O	96.66	+	+	u+
100%	STRYKER	SYK	218.64	+	+	+
89%	SYSCO	SYI	73.60	+	+	+
100%	TARGET	TGT	86.58	u+	uu+	uu+
39%	TE CONNECTIVITY	TEL	90.91	+	-	uu+
100%	TEXAS INSTRUMENTS	TXN.O	124.60	+	+	uu+
50%	TRAVELERS COS.	TRV	147.58	+	-	u+
22%	TJX	TJX	51.55	-	uo	uo
28%	TRANSOCEAN	RIG	4.61	-	uo	uu+
28%	UNION PACIFIC	UNP	168.76	-	uo	uo
94%	UNITED PARCEL SER.'B'	UPS	116.79	+	+	u+
17%	UNITED TECHNOLOGIE	UTX	126.64	-	uo	-
17%	UNITEDHEALTH GROU	UNH	244.71	uo	-	uo
22%	US BANCORP	USB	52.67	+	-	-
6%	V F	VFC	79.99	-	-	uo
28%	VALERO ENERGY	VLO	79.70	-	O	uu+
67%	VERIZON COMMUNICAT	VZ	57.00	-	uu+	u+
89%	VERTEX PHARMS.	VRTX.O	187.09	+	+	+
100%	VISA 'A'	V	179.74	+	u+	uu+
17%	WALGREENS BOOTS AL	WBA.O	51.16	-	O	-
100%	WALMART	WMT	113.81	+	uu+	uu+
22%	WALT DISNEY	DIS	135.29	+	-	-
83%	WASTE MANAGEMENT	WM	120.02	+	+	+
17%	WELLS FARGO & CO	WFC	45.25	-	uo	-
100%	WELLTOWER	WELL.K	89.42	+	+	+
6%	WILLIAMS	WMB	23.56	-	-	O
28%	XILINX	XLNX.O	106.91	-	O	uu+
89%	YUM! BRANDS	YUM	116.46	+	+	do
100%	ZOETIS	ZTS	126.75	+	+	+

# Dow Jones 30 Industrial Index constituent stocks

SCORE	COMPANY	RIC	PRICE	LT	MT	ST	COMMENT	DATE BOUGHT	PRICE BOUGHT	PROFIT or LOSS
22%	3M	MMM	162.95	-	O	uo				
44%	AMERICAN EXPRESS	AXP	124.40	+	d-	uu+	Major downtrend signal if 122.50 / 120.50 is broken.			
100%	APPLE	AAPL.O	210.35	+	+	uu+	Major uptrend to resume only if 213 and 220 is broken.	27.06.2019	201.1	4.60%
28%	BOEING	BA	333.78	-	uo	u+				
6%	CATERPILLAR	CAT	117.36	-	-	uo				
11%	CHEVRON	CVX	117.31	do	d-	d-				
0%	CISCO SYSTEMS	CSCO.O	48.50	-	-	-				
100%	COCA COLA	KO	54.69	+	+	+	TOOK PROFIT of 7.7%. Major resistance is at 55 and 55.60.			
28%	DOW CHEMICAL	DOW	45.60	-	uo	uu+				
22%	EXXON MOBIL	XOM	69.45	-	uo	uo				
44%	GOLDMAN SACHS GP.	GS	202.20	+	uo	uo				
61%	HOME DEPOT	HD	207.95	+	uo	uo				
28%	INTEL	INTC.O	47.23	-	O	uu+				
28%	INTERNATIONAL BUS.M	IBM	135.04	O	uo	-				
33%	JOHNSON & JOHNSON	JNJ	132.25	-	uo	+				
17%	JP MORGAN CHASE & C	JPM	108.69	uo	-	uo				
100%	MCDONALDS	MCD	218.78	+	+	+	TOOK PROFIT of 19%.			
83%	MERCK & COMPANY	MRK	86.19	+	+	+	Long-term uptrend would resume only if 88 is cleared.			
100%	MICROSOFT	MSFT.O	138.41	+	u+	uu+	TOOK PROFIT of 15%. Long-term resistance is at 141.			
22%	NIKE 'B'	NKE	81.13	-	uo	uo				
6%	PFIZER	PFE	35.18	-	-	uo				
100%	PROCTER & GAMBLE	PG	120.24	+	+	+				
50%	TRAVELERS COS.	TRV	147.58	+	-	u+				
17%	UNITED TECHNOLOGIE	UTX	126.64	-	uo	-	Rebounding off the major support at 123.50/122. Next support is 118 / 116 and 110.			
17%	UNITEDHEALTH GROUPE	UNH	244.71	uo	-	uo				
67%	VERIZON COMMUNICAT	VZ	57.00	-	uu+	u+				
100%	VISA 'A'	V	179.74	+	u+	uu+	Major resistance is at 181.50 and 186.50.			
17%	WALGREENS BOOTS AL	WBA.O	51.16	-	O	-				
100%	WALMART	WMT	113.81	+	uu+	uu+	The long-term uptrend is likely to resume if 116 is broken.			
22%	WALT DISNEY	DIS	135.29	+	-	-	Supports are 129.50 and 118.			

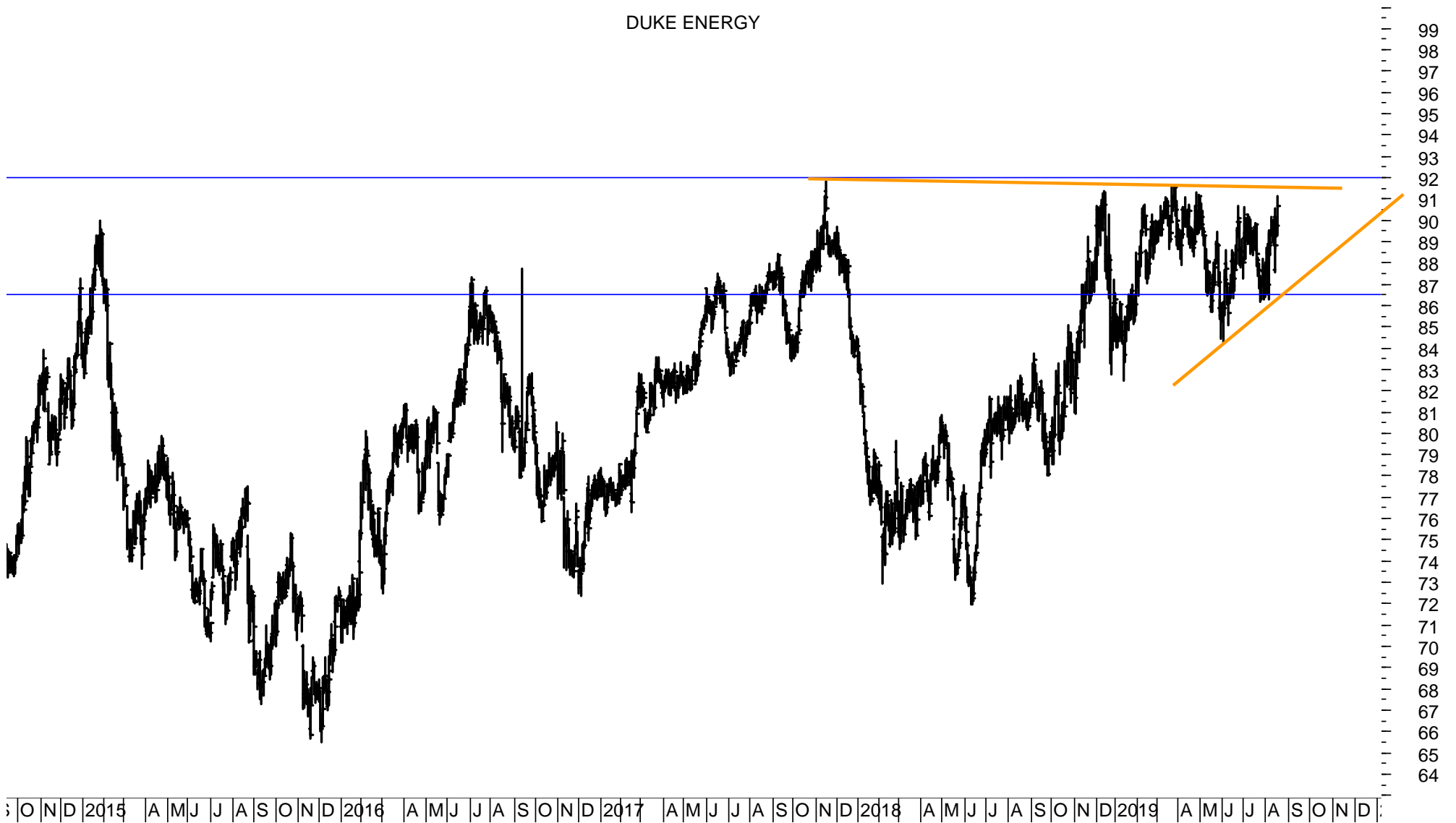
## Other US stocks

SCORE	COMPANY	RIC	PRICE	LT	MT	ST	COMMENT	DATE BOUGHT	PRICE BOUGHT	PROFIT or LOSS
61%	AMERICAN INTL.GP.	AIG	54.81	+	O	UO	Sell the position if 51.70 is broken.	01.05.2019	47.8	14.67%
61%	ANALOG DEVICES	ADI.O	111.17	+	O	UU+	Sell the position if 106 is broken.	02.07.2019	115	-3.33%
72%	BECTON DICKINSON	BDX	251.48	+	+	UU+	Sell the position if 235 is broken.	25.06.2019	252.1	-0.25%
83%	COLGATE-PALM.	CL	73.08	+	UU+	UU+	Sell the position if 68.30 is broken.	30.04.2019	72.1	1.36%
56%	DELTA AIR LINES	DAL	58.19	+	O	UO	Sell the position if 56.50 is broken.	02.07.2019	58.7	-0.87%
100%	DUKE ENERGY	DUK	90.67	+	+	+	Sell the position if 88.90 is broken.	14.06.2019	87.95	3.09%
94%	EBAY	EBAY.O	40.39	+	+	UU+	Sell the position if 38.50 is broken.	13.06.2019	39.25	2.90%
100%	FIDELITY NAT.INFO.SV	FIS	138.89	+	+	U+	TOOK PROFIT of 15%.			
100%	GENERAL DYNAMICS	GD	187.59	+	+	UU+	Sell the position if 180.20 is broken.	26.06.2019	179.65	4.42%
100%	MEDTRONIC	MDT	104.18	+	+	UU+	Sell the position if 100.60 is broken.	11.06.2019	97.8	6.52%
17%	METLIFE	MET	45.77	O	-	UO	Sell the position if 45 is broken.	02.05.2019	47.1	-2.82%
100%	MICRON TECHNOLOGY	MU.O	45.01	+	+	UU+	Sell the position if 41.55 is broken.	10.07.2019	43.1	4.43%
94%	NORTHROP GRUMMAN	NOC	370.08	+	+	+	Sell the position if 333 is broken.	28.05.2019	312.1	18.58%
100%	PHILIP MORRIS INTL.	PM	85.01	U+	+	UU+	Sell the position if 78 is broken.	25.06.2019	77.83	9.23%
78%	PHILLIPS 66	PSX	98.76	+	+	UO	Sell the position if 94 is broken.	02.07.2019	95.6	3.31%
11%	PNC FINL.SVS.GP.	PNC	128.36	O	-	-	Sell the position if 132 is broken.	30.04.2019	137	-6.31%
100%	TEXAS INSTRUMENTS	TXN.O	124.60	+	+	UU+	Sell the position if 114.50 is broken.	27.06.2019	115.15	8.21%
22%	TJX	TJX	51.55	-	UO	UO	Sell the position if 50 is broken.	09.07.2019	55	-6.27%

# DUKE ENERGY – daily chart

A major breakout would be signaled if 92 is broken.  
Investors can add to the position if 92 is cleared.

DUKE ENERGY



## TRANSOCEAN – 10-minute chart

Tansocean could trigger a buy signal only if 4.75 / 4.85 and 4.95 is broken.  
Supports are 4.47 and 4.33.



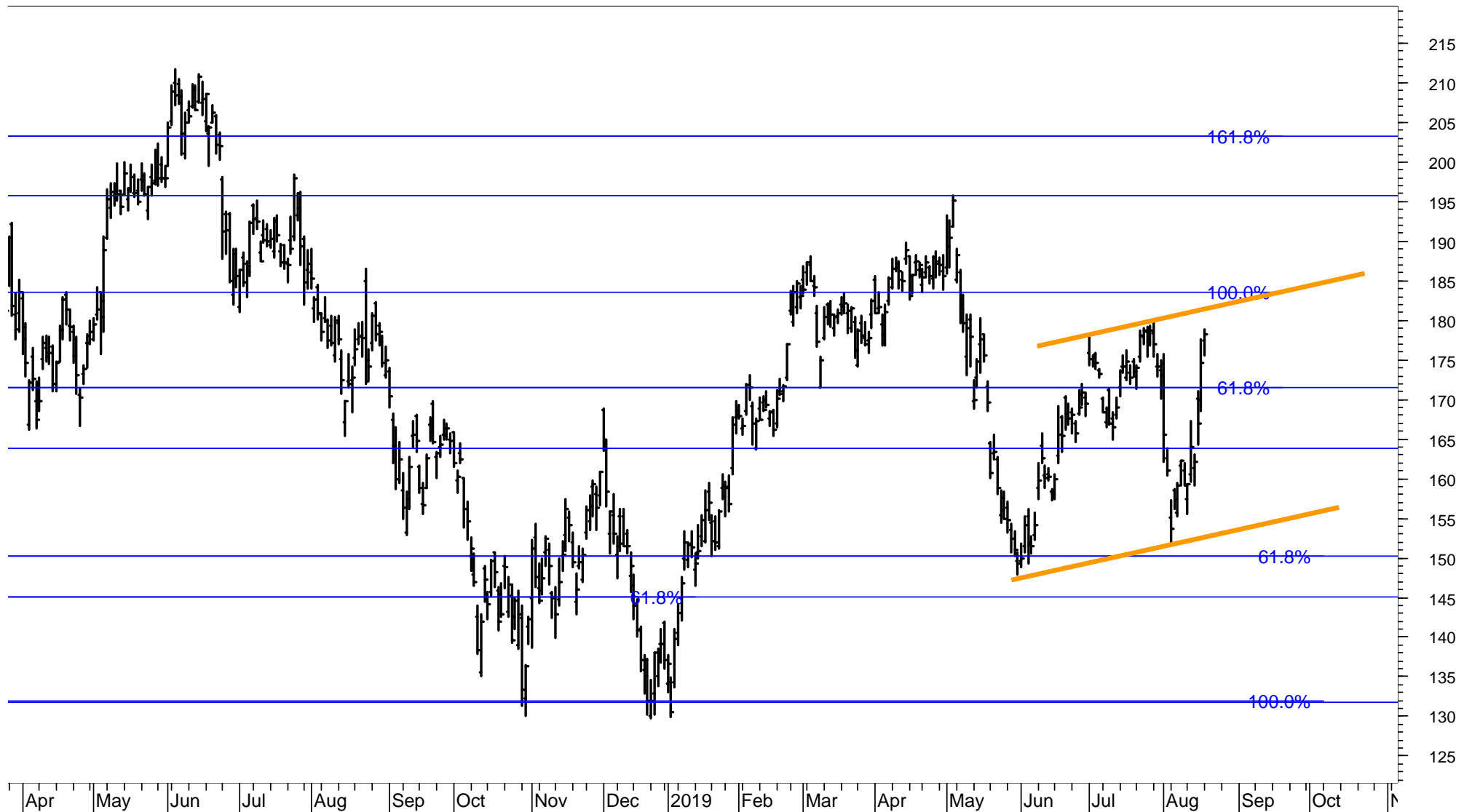
# JAPAC 100 stocks – listed according to the Score (range from 100% to 0%, 40%-60% is neutral)

SCORE	COMPANY	RIC	PRICE	LT	MT	ST
100%	ALIBABA GRP AD/d	BABA.K	0.00	u+	u+	uu+
100%	INDOCEMENT T P/d	INTP.JK	22'525.00	+	+	uu+
100%	KALBE FARMA TB/d	KLBF.JK	1'575.00	+	+	+
100%	NCSOFT/d	036570.KS	539'000.00	+	+	+
100%	NTT DOCOMO/d	9437.T	2'644.50	+	+	+
100%	SEMEN INDONESIA/d	SMGR.JK	13'225.00	+	+	+
100%	TELKOM INDONESIA/d	TLKM.JK	4'420.00	+	+	+
94%	HYUNDAI MOBIS/d	012330.KS	244'500.00	+	+	u+
94%	SK HYNIX/d	000660.KS	76'400.00	+	+	uu+
89%	KT G/d	033780.KS	101'500.00	u+	+	+
89%	NAVER/d	035420.KS	145'500.00	+	+	do
89%	SAMSUNG SDI/d	006400.KS	254'000.00	+	+	+
83%	INFOSYS LTD/d	INFY.NS	792.35	+	+	+
83%	KAKAO/d	035720.KS	132'000.00	+	u+	+
83%	KIA MOTORS/d	000270.KS	42'950.00	+	+	+
83%	SHIN-ETSU CHEM/d	4063.T	10'540.00	+	+	d-
78%	BHARTI AIRTEL/d	BRTI.NS	361.00	+	+	+
78%	RELIANCE/d	RELI.NS	1'281.95	uo	uu+	u+
78%	TAIWAN SEMICON/d	2330.TW	254.50	+	+	uu+
78%	TOYOTA MOTOR C/d	7203.T	6'909.00	+	+	uu+
67%	GUDANG GARAM T/d	GGRM.JK	76'775.00	-	uu+	uu+
56%	HYUNDAI GLOVIS/d	086280.KS	157'000.00	+	uo	+
56%	WOONGJIN COWAY/d	021240.KS	82'100.00	+	+	dd-
50%	H M SAMPOERNA/d	HMSP.JK	3'010.00	-	u+	u+
50%	NTT/d	9432.T	5'013.00	+	-	u+
50%	S-OIL/d	010950.KS	91'700.00	o	+	uo
44%	KOREA ZINC/d	010130.KS	444'000.00	o	o	+
44%	SAMSUNG HEAVY/d	010140.KS	7'600.00	uo	uo	u+
44%	SONY CORP/d	6758.T	5'896.00	+	do	do
39%	HYUNDAI HEAVY /d	267250.KS	312'500.00	uo	o	uu+
39%	LG CHEM/d	051910.KS	321'000.00	o	uo	uu+
39%	LOTTE CHEMICAL/d	011170.KS	229'000.00	o	uo	u+
33%	BANK OF CHINA/d	3988.HK	3.0100	o	uo	uo
33%	INDAH KIAT PUL/d	INKP.JK	7'225.00	-	o	u+
33%	KDDI/d	9433.T	2'754.50	u+	-	uu+
33%	SAMSUNG BIOLOG/d	207940.KS	283'500.00	-	o	+
33%	SAMSUNG ELECTR/d	005930.KS	44'450.00	o	uo	uo
33%	SAMSUNG EL-MEC/d	009150.KS	91'800.00	-	o	uu+
33%	SAMSUNG SDS/d	018260.KS	199'000.00	o	o	uo
33%	UNILEVER INDON/d	UNVR.JK	45'125.00	o	do	do
28%	FANUC LTD/d	6954.T	18'180.00	o	uo	-
28%	HYUNDAI STEEL/d	004020.KS	37'250.00	-	uo	uu+
28%	KOREA ELEC POW/d	015760.KS	25'700.00	o	o	-
28%	SAMSUNG C&T/d	028260.KS	89'500.00	-	o	uu+
22%	BANK RAKYAT IN/d	BBRI.JK	4'110.00	+	d-	-
22%	CENTRAL JAPAN/d	9022.T	20'975.00	-	uo	uo
22%	CHAROEN POKPHA/d	CPIN.JK	4'600.00	-	o	o
22%	HONDA MOTOR/d	7267.T	2'495.00	-	uo	uo
22%	JAPAN TOBACCO/d	2914.T	2'262.00	-	uo	uo
22%	MIRAE ASSET DW/d	006800.KS	7'360.00	o	-	u+

SCORE	COMPANY	RIC	PRICE	LT	MT	ST
22%	MIZUHO FINANCI/d	8411.T	155.20	-	o	uo
22%	NISSAN MOTOR C/d	7201.T	669.30	-	o	uo
22%	SAMSUNG ELEC-1/d	005935.KS	37'050.00	o	-	uu+
22%	SK INNOVATION/d	096770.KS	162'500.00	-	o	uo
17%	BANK BNI TBK/d	BBNI.JK	7'875.00	o	-	o
17%	FAST RETAILING/d	9983.T	62'710.00	o	-	uo
17%	GS HOLDINGS/d	078930.KS	46'750.00	o	-	uo
17%	HYUNDAI MOTOR/d	005380.KS	126'500.00	do	-	do
17%	KOREA SHIPBUIL/d	009540.KS	108'500.00	-	-	u+
17%	LG CORP/d	003550.KS	68'900.00	o	-	uo
17%	LG ELECTRONICS/d	066570.KS	60'800.00	o	-	uo
17%	MITSUB UFJ FG/d	8306.T	507.10	-	o	-
17%	SOFTBANK GROUP/d	9984.T	4'937.00	-	uo	-
17%	TAKEDA PHARM/d	4502.T	3'584.00	d-	o	d-
17%	TENCENT/d	0700.HK	333.40	o	d-	uo
11%	BANK MANDIRI T/d	BMRI.JK	7'400.00	o	-	-
11%	HANON SYSTEMS/d	018880.KS	11'350.00	o	-	-
11%	HYUNDAI ENG&CO/d	000720.KS	41'050.00	-	-	u+
11%	TATA CONSULT/d	TCS.NS	2'200.00	do	dd-	dd-
6%	AMOREPACIFIC/d	090430.KS	128'000.00	-	-	uo
6%	CANON INC/d	7751.T	2'766.50	-	-	uo
6%	CELLTRION HEAL/d	091990.KQ	41'700.00	-	-	uo
6%	CELLTRION/d	068270.KS	155'000.00	-	-	uo
6%	CNOOC/d	0883.HK	11.62	-	-	uo
6%	E-MART/d	139480.KS	112'000.00	-	-	uo
6%	HANA FINANCIAL/d	086790.KS	32'050.00	-	-	uo
6%	HANKOOK TIR TE/d	161390.KS	28'750.00	-	-	uo
6%	HANMI PHARM/d	128940.KS	281'000.00	-	-	do
6%	IBK/d	024110.KS	12'250.00	-	-	uo
6%	JAPAN POST HLD/d	6178.T	995.00	-	-	o
6%	KAO CORPORATIO/d	4452.T	7'767.00	-	-	uo
6%	KB FGI/d	105560.KS	39'400.00	-	-	uo
6%	LG DISPLAY/d	034220.KS	13'150.00	-	-	uo
6%	LG HOUSEHOLD/d	051900.KS	1'165'000.00	-	-	uo
6%	LG UPLUS/d	032640.KS	12'500.00	-	-	o
6%	LOTTE SHOPPING/d	023530.KS	128'000.00	-	-	uo
6%	NETMARBLE/d	251270.KS	93'500.00	-	-	do
6%	POSCO/d	005490.KS	211'500.00	-	-	uo
6%	SAMSUNG LIFE/d	032830.KS	66'400.00	-	-	uo
6%	SHINHAN FINANC/d	055550.KS	40'500.00	-	-	uo
6%	SK HOLDINGS/d	034730.KS	196'000.00	-	-	uo
0%	ASTRA INTL TBK/d	ASII.JK	6'400.00	-	-	-
0%	DB INSURANCE/d	005830.KS	47'050.00	-	-	-
0%	KANGWON LAND/d	035250.KS	28'550.00	d-	-	-
0%	MITSUBISHI COR/d	8058.T	2'600.50	-	-	-
0%	RECRUIT HOLDIN/d	6098.T	3'364.00	dd-	dd-	d-
0%	SAMSUNG FIRE I/d	000810.KS	230'000.00	-	-	-
0%	SK TELECOM/d	017670.KS	234'000.00	-	-	d-
0%	SMFG/d	8316.T	3'495.00	-	-	-
0%	UNITED TRACTOR/d	UNTR.JK	20'625.00	-	-	-

# ALIBABA

Alibaba could trigger a new buy signal if 184 is broken.



# SAMSUNG ELECTRONICS

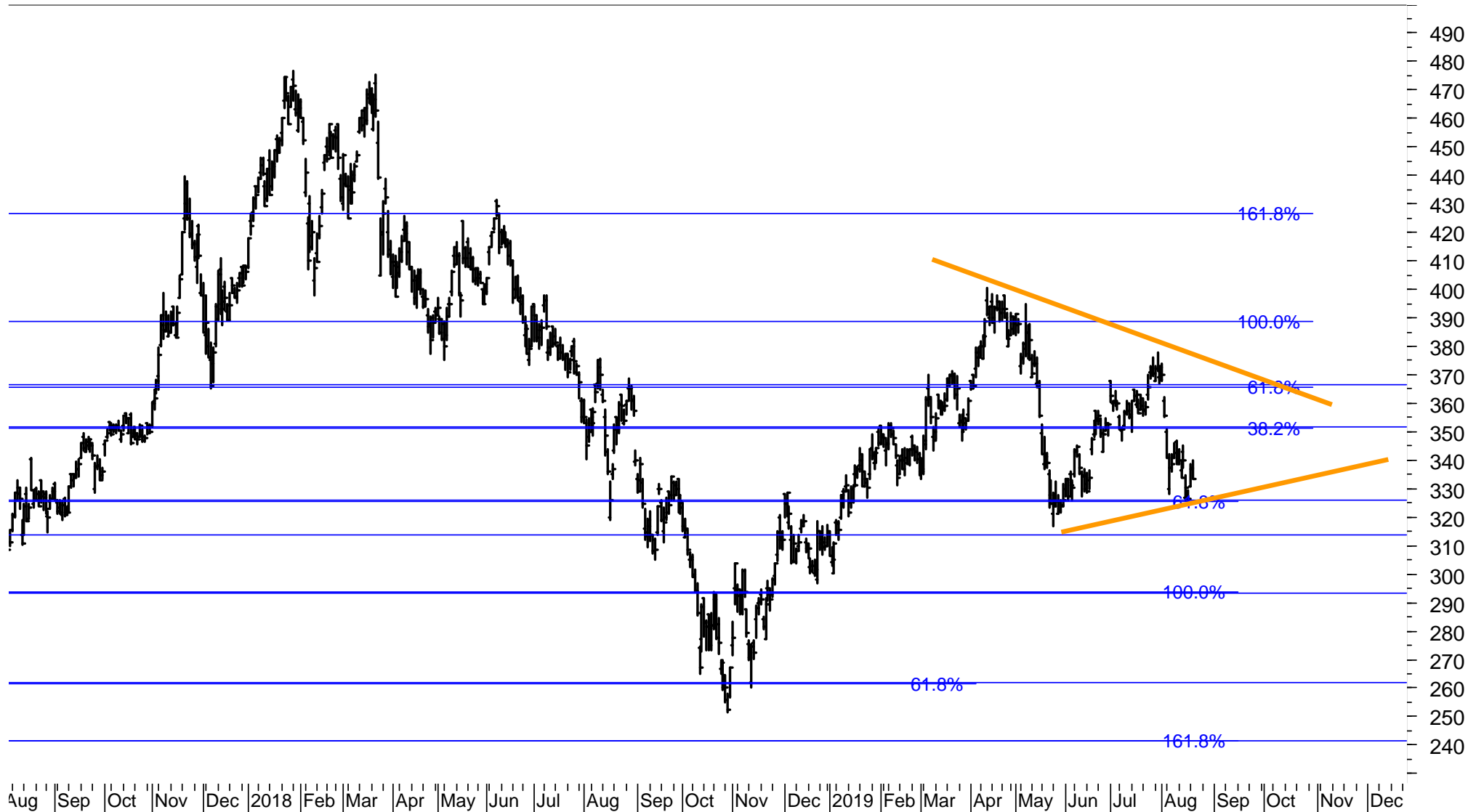
Samsung is bouncing off the support at 42.5k.  
Resistance is at 45k and 46.4k and 47.6k.





# TENCENT

Tencent is bouncing off the major support at 325.  
Lower supports are at 315, 295 and 260 / 240.  
Resistance is at 352, 367 and 390.



## Disclaimer

**Copyright © 2018 and 2019; FinChartOutlook GmbH, Rolf Bertschi, all rights reserved.**

This Publication is designed for sophisticated money managers who are aware of the risk in securities investments and market forecasting. The analysis herein is based both on technical and cyclic readings and the recommendations represent the opinion of the Publisher, FinChartOutlook GmbH. Past performance does not imply or guarantee profitable results in the future. Before making specific investments, further investigation is recommended. Although the information contained in this Publication has been derived from sources which are believed to be reliable, they are not always necessarily complete and cannot be guaranteed. Neither the Publisher, FinChartOutlook GmbH, nor any of its employees, affiliates or subsidiaries shall have any liability for any loss, harm or other detriment which has been sustained by any natural person or entity that has relied on the information contained in this Publication. Any person or entity who does rely on any information contained in this Publication does so at his/her own risk and by doing so assumes all liability for any such loss, harm or other detriment. Employees of the Publisher may at times have positions in the securities referred to in this Publication and may make purchases or sales of these securities while the Publication is in circulation. An advisor / client relationship is not created by the distribution or delivery of this publication.

The information published and opinions expressed are provided by FinChartOutlook GmbH for personal use and for informational purposes only. The information is not intended to provide specific financial, investment, tax, legal or accounting advice for you, and is not intended to be relied upon in that regards. You should not act or rely on the information without professional assistance. Non information published in this Publication constitutes an offer or recommendation, to buy or sell any investment instruments, to effect any transactions, or to conclude any legal act of any kind whatsoever. FinChartOutlook GmbH disclaims, without intention, all liability for any loss or damage of any kind, including any direct, indirect or consequential damages, which might be incurred through the use of any information in this presentation. The entire content of this paper is subject to copyright with all rights reserved. You may save or print out a hard copy, provided that you do not remove any copyright or other proprietary notices. All property rights shall remain with FinChartOutlook GmbH. The content of this Publication may not be reproduced (in whole or in part), transmitted (by electronic means or otherwise), modified, linked into or used for any public or commercial purpose without the prior written permission of Rolf P. Bertschi, FinChartOutlook GmbH.

## Sources

The charts in this publication are from Metastock and Datastream from Thomson Reuters Equis. All indicators and analyses are by Rolf Bertschi.

## Explanations

For a more detailed explanation of the Trend and Momentum Models applied in this Chart Outlook, please see

[www.chartoutlook.com](http://www.chartoutlook.com)

[www.rolfbertschi.ch](http://www.rolfbertschi.ch)

## E-Mail

[rolf.bertschi@chartoutlook.ch](mailto:rolf.bertschi@chartoutlook.ch)

**FinChartOutlook GmbH, Rolf P. Bertschi, Dörflistrasse 17, 8903 Birmensdorf ZH, Switzerland**

## Disclaimer

**Copyright © 2018 and 2019; FinChartOutlook GmbH, Rolf Bertschi, all rights reserved.**

This Publication is designed for sophisticated money managers who are aware of the risk in securities investments and market forecasting. The analysis herein is based both on technical and cyclic readings and the recommendations represent the opinion of the Publisher, FinChartOutlook GmbH. Past performance does not imply or guarantee profitable results in the future. Before making specific investments, further investigation is recommended. Although the information contained in this Publication has been derived from sources which are believed to be reliable, they are not always necessarily complete and cannot be guaranteed. Neither the Publisher, FinChartOutlook GmbH, nor any of its employees, affiliates or subsidiaries shall have any liability for any loss, harm or other detriment which has been sustained by any natural person or entity that has relied on the information contained in this Publication. Any person or entity who does rely on any information contained in this Publication does so at his/her own risk and by doing so assumes all liability for any such loss, harm or other detriment. Employees of the Publisher may at times have positions in the securities referred to in this Publication and may make purchases or sales of these securities while the Publication is in circulation. An advisor / client relationship is not created by the distribution or delivery of this publication.

The information published and opinions expressed are provided by FinChartOutlook GmbH for personal use and for informational purposes only. The information is not intended to provide specific financial, investment, tax, legal or accounting advice for you, and is not intended to be relied upon in that regards. You should not act or rely on the information without professional assistance. Non information published in this Publication constitutes an offer or recommendation, to buy or sell any investment instruments, to effect any transactions, or to conclude any legal act of any kind whatsoever. FinChartOutlook GmbH disclaims, without intention, all liability for any loss or damage of any kind, including any direct, indirect or consequential damages, which might be incurred through the use of any information in this presentation. The entire content of this paper is subject to copyright with all rights reserved. You may save or print out a hard copy, provided that you do not remove any copyright or other proprietary notices. All property rights shall remain with FinChartOutlook GmbH. The content of this Publication may not be reproduced (in whole or in part), transmitted (by electronic means or otherwise), modified, linked into or used for any public or commercial purpose without the prior written permission of Rolf P. Bertschi, FinChartOutlook GmbH.

## Sources

The charts in this publication are from Metastock and Datastream from Thomson Reuters Equis. All indicators and analyses are by Rolf Bertschi.

## Explanations

For a more detailed explanation of the Trend and Momentum Models applied in this Chart Outlook, please see

[www.chartoutlook.com](http://www.chartoutlook.com)

[www.rolfbertschi.ch](http://www.rolfbertschi.ch)

## E-Mail

[rolf.bertschi@chartoutlook.ch](mailto:rolf.bertschi@chartoutlook.ch)

**FinChartOutlook GmbH, Rolf P. Bertschi, Dörflistrasse 17, 8903 Birmensdorf ZH, Switzerland**