

A background image showing various financial charts and data tables on a screen, with a semi-transparent circle in the center containing the text 'GLOBAL CHART OUTLOOK'.

## GLOBAL CHART OUTLOOK

10<sup>th</sup> September 2019  
Global Equities

# Swiss SPI 200 constituent stocks – listed according to the Score (range from 100% to 0%, 40%-60% is neutral)

100%	GR KTBK PS	GRKP.S
100%	RIETER N	RIEN.S
100%	VETROPACK I	VET.S
100%	ALLREAL HLD N	ALLN.S
100%	BARRY CALLEBAUT	BARN.S
100%	SPICE PRIV AG	SPCE.S
100%	SCHWEITER I	SWTQ.S
100%	INFICON N	IFCN.S
100%	ZURICH INSURANCE	ZURN.S
100%	CS GROUP AG	CSGN.S
100%	ADECCO N	ADEN.S
100%	ABB LTD N	ABBN.S
100%	HELVETIA HLDG	HELN.S
100%	STRAUMANN HLD N	STMN.S
100%	BACHEM HOLD N	BANB.S
100%	SWISS LIFE HLDG	SLHN.S
100%	BFW LIEGENSCH N	BLIN.S
100%	VAUDOISE VERS N	VAHN.S
100%	ALSO HLD AG	ALSN.S
100%	SCHINDLER PS	SCHP.S
100%	SCHINDLER N	SCHN.S
100%	KUEHNE & NAGEL	KNIN.S
100%	ROMANDE ENERGIE	HREN.S
100%	LOGITECH	LOGN.S
100%	DAETWYL I	DAE.S
100%	JULIUS BAER N	BAER.S
100%	SWISS RE N	SRENH.S
100%	BKW N	BKWB.S
100%	ZUG ESTATE HLD	ZUGN.S
100%	IVF HARTMANN	VBSN.S
100%	BURKHALTER AG	BRKN.S
100%	CONZZETA HLDNG I	CONC.S
100%	ZEHNDER I	ZEHN.S
100%	VAT GROUP N	VACN.S
100%	FLUGHAFEN ZURICH	FHZN.S
100%	LANDIS GYR	LANDI.S
100%	SENSIRION N	SENSI.S
94%	SNB N	SNBN.S
94%	PANALPINA WELT	PWTN.S
94%	GURIT I	GUR.S
94%	MOBIMO HLDG	MOBN.S
94%	JUNGFRAUBAHN N	JFN.S
94%	IMPLENIA N	IMPN.S
94%	PARTNERS GROUPAG	PGHN.S
94%	EDISUN POWER	ESUN.S
94%	NESTLE SA	NESN.S
94%	CEMBRA MONEY BAN	CMBN.S
94%	INTERSHOP N	ISN.S
94%	INVESTIS N	IREN.S
94%	GALENICA	GALE.S
94%	VIFOR PHARMA	VIFN.S
89%	VALORA N	VALN.S
89%	SGS N	SGSN.S

89%	O FUESSLI N	OFN.S
89%	HIGHL EVNT & ENT	HLEE.S
89%	BVZ HOLDING AG	BVZN.S
89%	LINDT & SP N	LISN.S
89%	SWISSQUOTE GRP N	SQN.S
89%	BASILEA PHARMA	BSLN.S
89%	CLARIANT N	CLN.S
89%	SWATCH GROUP N	UHRN.S
89%	SWATCH GROUP I	UHR.S
89%	LONZA GRP AG N	LONN.S
89%	APG SGA	APGN.S
89%	PARGESA I	PARG.S
89%	DUFY AG	DUFN.S
89%	AUTONEUM N	AUTON.S
89%	BOSSARD N	BOS.S
89%	SFS GROUP	SFSN.S
89%	MOLECULAR PARTNE	MOLN.S
89%	WISEKEY N	WIHN.S
89%	IDORSIA N	IDIA.S
89%	ASMALL WORLD N	ASWN.S
83%	WARTECK N	WARN.S
83%	SWISS PRIME SITE	SPSN.S
83%	GIVAUDAN N	GIVN.S
83%	AEVIS HOLDING SA	AEVS.S
83%	SIEGFRIED N	SFZN.S
83%	BCV N	BCVN.S
83%	GEBERIT N1	GEBN.S
83%	MCH GROUP AG	MCHN.S
83%	GLARNER KB N	GLKBN.S
83%	PLAZZA AG	PLANZ.S
83%	ZUEBLIN N	ZUBN.S
78%	FISCHER N	FIN.S
78%	ARUNDEL AG	ARONL.S
78%	BUCHER N	BUCN.S
78%	ADVAL TECH N	ADV.N.S
78%	KOMAX N	KOMN.S
78%	ST GALLER KB N	SGKN.S
78%	LAFARGEHOLCIM	LHN.S
78%	VONTOBEL N	VONN.S
78%	VALIANT N	VATN.S
78%	SIG COMB GRP N	SIGNC.S
78%	ORASCOM DEV H	ODHN.S
78%	PEACH PROP	PEAN.S
78%	CALIDA HLD N	CALN.S
78%	BQ CANT DU JURA	BCJ.S
78%	LIECH LANDBK	LLBN.S
72%	LINDT & SP PS	LISP.S
72%	TEMENOS N	TEMN.S
72%	SUNRISE N	SRCG.S
72%	MOBILEZONE HLD I	MOZN.S
67%	AMS	AMS.S
67%	SWISSCOM N	SCMN.S
67%	CIE FIN TR I	CFT.S

67%	PSP CH PRPTY N	PSPN.S
67%	BURCKHARDT	BCHN.S
67%	SWISS FIN&PROP	SFPN.S
67%	LEONTEQ	LEON.S
67%	RICHEMONT N	CFR.S
67%	LASTMINUTE ORD	LMN.S
61%	CI COM SA I	CIE.S
61%	ELMA N	ELMN.S
61%	ROCHE HOLDING AG	ROG.S
61%	EFG INT N	EFGN.S
61%	U-BLOX N	UBXN.S
61%	SULZER N	SUN.S
61%	ARYZTA AG	ARYN.S
61%	POLYPHOR N	POLN.S
61%	UBS GROUP N	UBSG.S
56%	BELIMO HOLDING N	BEAN.S
56%	CHAM GROUP AG	CHAMA.S
56%	CREALOGIX HLDG	CLXN.S
56%	KUDELSKI	KUD.S
56%	GAM N	GAMH.S
56%	ORION N	ORON.S
50%	OC OERLIKON CORP	OERL.S
50%	FEINTOOL N	FTON.S
50%	SONOVA H AG	SOON.S
50%	HOCHDORF N	HOCN.S
50%	COLTENE N	CLTN.S
50%	METALL ZUG	METN.S
50%	DKSH N	DKSH.S
50%	OBSEVA SA/d	OBSV.O
44%	SCHLATTER N	STRN.S
44%	LEM HOLDING N	LEHN.S
44%	ARBONIA AG	ARBNO.S
44%	VARIA US PROP	VARN.S
44%	SIKA	SIKA.S
39%	HYPO BK LENZB N	HBLN.S
39%	STARRAG N	STGN.S
39%	DORMAKABA HOLD	DOKA.S
39%	NOVARTIS N	NOVN.S
39%	YPSOMED HOLDING	YPSN.S
39%	EVOLVA HOLD AG	EVE.S
39%	SANTHERA PHARMA	SANN.S
39%	MEYER BURGER N	MBTN.S
33%	BASELLAND KTBK	BLKB.S
33%	PHOENIX I	PM.S
33%	INTERROLL N	INRN.S
33%	BASLER KTBK PS	BSKP.S
33%	LUZERNER KB N	LUKN.S
33%	BOBST GRP N	BOBNN.S
33%	BELLEVUE GRP N	BBN.S
33%	KARDEX I	KARN.S
33%	PERROT DUVAL I1	PEDU.S
33%	BELL FOOD GROUP	BELL.S
28%	KTM INDUSTRIES/d	KTMI.VI

28%	VILLARS N	VILN.S
28%	CICOR TECH	CICN.S
28%	TECAN HLD N	TECN.S
28%	EMS-CHEMIE N	EMSN.S
28%	LECLANCHE N	LECN.S
28%	MEIER TOBLER GRO	METG.S
28%	BLACKSTONE RES	BLS.S
28%	KUROS BIOSCIENCE	KURN.S
28%	COMET HOLDING	COTNE.S
28%	VP BANK AG	VPBN.S
22%	PERFECT HOLDING	PRFN.S
22%	BALOISE HLD N	BALN.S
22%	GRP MINOTERIES	GMI.S
17%	MIKRON N	MIKN.S
17%	FORBO N	FORN.S
17%	BERNER KB N	BEKN.S
17%	AIREIS SA	AIRE.S
17%	BB BIOTECH ORD	BION.S
17%	VZ HOLDING N	VZN.S
17%	LALIQUE	LLQ.S
17%	RELIEF THERAPEUT	RLFB.S
17%	POENINA	PNHO.S
17%	THURGAUER KB PS	TKBP.S
17%	ALCON N	ALCC.S
17%	WALLISER KTBK	WKB.S
17%	KLINGELNBERG N	KLIN.S
17%	NEWRON PHARMA N	NWRN.S
17%	CASSIOPEA N	SKIN.S
11%	BK LINTH LLB AG	LINN.S
11%	CPH CHEM&PAPER	CPHN.S
11%	STADLER RAIL	SRAIL.S
11%	GAVAZZI CARLO I	GAV.S
11%	TAMEDIA N	TAMN.S
11%	ASCOM N	ASCN.S
11%	TORNOS HOLDING N	TOHN.S
11%	HUBER & S N	HUBN.S
11%	MEDARTIS	MEDA.S
6%	ZWAHLEN & MAYR	ZWM.S
6%	VON ROLL I	ROL.S
6%	SCHMOLZ+BICKENB	STLN.S
6%	PRIVATE EQUITY N	PEHN.S
6%	SCHAFFNER N	SAHN.S
0%	ZUGER KB I	ZG.S
0%	EMMI N	EMMN.S
0%	ZUR ROSE GROUP N	ROSEG.S
0%	TITL BN BERG N	TIBN.S
0%	HIAG IMMOBILIEN	HIAG.S
0%	BC GENEVE P	BCGE.S
0%	VALARTIS GROUP	VLRT.S
0%	CEVA LOGISTICS N	CEVAL.S
0%	MEDACTA GROUP	MOVE.S
0%	COSMO PHARM N	COPN.S

Swiss equities (and many of the global equities) have seen some nice price gains over the last 2 weeks.

Bank stocks were among the leaders.

Most importantly, the price gains of the last 2 weeks have reached the first major resistance levels. The short-term rally could pause and then the stocks must clear these levels to signal higher targets. This is why I am providing the key levels, breaks of which are required to trigger the next buy signals. My analysis of the chart of CS Group (page 9) shows my scenarios with the key levels.

The bigcap stocks Nestlé, Roche and Novartis appear tired. After Nestlé has reached my exact price target at 113 it entered a correction. Possibly, more assets could shift from bigcap to mid and small cap.

However, as I have discussed in my Chart Outlook Global Markets, the scenario that the overall stock markets can still enter a major correction has still to be respected.

## Swiss Market Index 20 constituent stocks

SCORE	COMPANY	RIC	PRICE	LT	MT	ST	COMMENT	DATE BOUGHT	PRICE BOUGHT	PROFIT or LOSS
100%	ABB LTD N	ABBN.S	19.67	u+	uu+	+	see chart			
100%	ADECCO N	ADEN.S	56.22	u+	uu+	u+	BUY if the resistance at 57 is broken. Next target is 59, 61, 63 or 67.50.			
17%	ALCON N	ALCC.S	58.15	na	uo	d-	Forming a triangle. Support is 57.70. Resistance is at 59.20 and 60.20.			
100%	CS GROUP AG	CSGN.S	12.80	u+	u+	+	see chart			
83%	GEBERIT N1	GBN.S	463.80	+	uu+	+	ADD to the position only if the resistance cluster at 465 / 470 is broken.	19.08.2019	438.10	5.87%
83%	GIVAUDAN N	GIVN.S	2'737.00	uu+	uu+	u+	BUY only if the resistance at 2780 is broken. Next resistance is 2860.			
78%	LAFARGEHOLCIM	LHN.S	48.51	o	uu+	u+	BUY if the resistance at 49.50 is broken. Next target is 50.50, 51, 53.			
89%	LONZA GRP AG N	LONN.S	345.80	+	+	+	Sell the position if 342 is broken.	11.06.2019	329.50	4.95%
94%	NESTLE SA	NESN.S	108.96	+	+	do	see chart			
39%	NOVARTIS N	NOVN.S	86.75	do	-	+	see chart	24.05.2019	85.55	1.40%
67%	RICHEMONT N	CFR.S	79.08	u+	uo	+	Resistance is at 82 / 83.			
61%	ROCHE HOLDING AG	ROG.S	267.30	do	do	o	see chart	24.05.2019	272.10	-1.76%
89%	SGS N	SGSN.S	2'468.00	o	uu+	u+				
44%	SIKA	SIKA.S	147.50	o	uo	u+				
100%	SWISS LIFE HLDG	SLHN.S	491.40	u+	uu+	u+	Next resistance is 497.50 and 504.			
100%	SWISS RE N	SRENH.S	102.40	+	+	+	BUY if the resistance at 103 is broken. Likely to rise to 107 or 114.			
67%	SWISSCOM N	SCMN.S	481.30	+	o	dd-				
89%	SWATCH GROUP I	UHR.S	279.70	u+	u+	u+	Must rise above 283 / 286 to signal 295, 304 or 320.			
61%	UBS GROUP N	UBSG.S	11.39	uo	uu+	+	BUY only if the resistances around 11.50 is cleared. Next resistance is 12.30 or 13.70.			
100%	ZURICH INSURANCE	ZURN.S	374.00	+	+	u+	BUY. Likely to rise to 410 or 440.	10.09.2019	374.00	

# Swiss Performance Index 200 stocks – listed alphabetically (A-Co)

SCORE	COMPANY	RIC	PRICE	LT	MT	ST	COMMENT	DATE BOUGHT	PRICE BOUGHT	PROFIT or LOSS
100%	ABB LTD N	ABB.N.S	19.67	u+	uu+	+	see chart			
100%	ADECCO N	ADEN.S	56.22	u+	uu+	u+	BUY if the resistance at 57 is broken. Next target is 59, 61, 63 or 67.50.			
78%	ADVAL TECH N	ADVN.S	169.00	uo	+	+				
83%	AEVIS HOLDING SA	AEVS.S	12.70	+	do	+				
17%	AIREIS SA	AIRE.S	1.19	-	o	-				
17%	ALCON N	ALCC.S	58.15	na	uo	d-	Forming a triangle. Support is 57.70. Resistance is at 59.20 and 60.20.			
100%	ALLREAL HLD N	ALLN.S	191.00	+	+	+	Hold.	02.07.2019	169.80	12.49%
100%	ALSO HLD AG	ALSN.S	147.80	+	uu+	u+	Must rise above 150 to signal 156 or 166.			
67%	AMS	AMS.S	42.94	+	uo	uu+				
89%	APG SGA	APGN.S	267.50	o	+	uu+	BUY if the resistance at 273 is broken. Next target is 283 / 285 or 300.			
44%	ARBONIA AG	ARBNO.S	11.42	o	uo	u+				
78%	ARUNDEL AG	ARONL.S	2.00	o	uu+	uu+				
61%	ARYZTA AG	ARYN.S	0.90	o	uu+	u+				
11%	ASCOM N	ASCN.S	10.10	uo	-	d-				
89%	ASMALLWORLD N	ASWN.S	2.98	+	+	do	BUY if the resistance at 3.40 is broken. Next target is 4.15 or 5.40.			
89%	AUTONEUM N	AUTON.S	118.70	o	uu+	+	Must rise above 122 / 125 to signal 134 / 136 or 144.			
100%	BACHEM HLD N	BANB.S	149.20	+	+	+	Likely to rise to the high from January 2018 at 162.	20.08.2019	134.60	10.85%
22%	BALOISE HOLD N	BALN.S	174.20	do	d-	d-				
100%	BARRY CALLEBAUT	BARN.S	2'044.00	+	+	+	Likely to enter a correction at the high from January 2018 at 2100.			
33%	BASELLAND KTBK	BLKB.S	908.00	-	uo	uu+				
89%	BASILEA PHARMA	BSLN.S	44.80	+	+	do	Stop 44.50.	28.08.2019	47.25	-5.19%
33%	BASLER KTBK PS	BSKP.S	71.00	-	uo	uu+				
17%	BB BIOTECH ORD	BION.S	61.75	-	o	dd-				
0%	BC GENEVE P	BCGE.S	197.50	-	-	-				
83%	BCV N	BCVN.S	750.00	o	+	do				
56%	BELIMO HOLDING N	BEAN.S	5'410.00	o	uo	u+				
33%	BELL FOOD GROUP	BELL.S	257.00	-	uo	uu+				
33%	BELLEVUE GRP N	BBN.S	21.10	+	-	-				
17%	BERNER KB N	BEKN.S	217.00	-	-	uu+				
100%	BFW LIEGENSCH N	BLIN.S	43.70	+	+	u+				
11%	BK LINTH LLB AG	LINN.S	460.00	o	-	-				
100%	BKW N	BKWB.S	74.20	uu+	uu+	u+				
28%	BLACKSTONE RES	BLS.S	1.02	o	do	dd-				
33%	BOBST GRP N	BOBNN.S	52.70	-	uo	u+	BUY if 53 is broken. Must rise above 53 to signal 54, 57 or 61.			
89%	BOSSARD N	BOS.S	142.00	u+	uu+	+	Must rise above 143 / 147 to signal 151, 159 or 175.			
78%	BQ CANT DU JURA	BCJ.S	56.50	+	do	o				
78%	BUCHER N	BUCN.S	311.00	o	uu+	+	BUY if the resistance at 312 is broken. Next target is 320, 330 or 340.			
67%	BURCKHARDT	BCHN.S	254.00	-	uu+	uu+	BUY only if the resistance at 260 is broken. Next target is 285.			
100%	BURKHALTER AG	BRKN.S	77.40	u+	+	u+	BUY if the resistance at 80 is broken.			
89%	BVZ HOLDING AG	BVZN.S	945.00	do	+	+				
78%	CALIDA HLD N	CALN.S	29.30	uo	uu+	uu+	Close to mega support at 26. Must rise above 30 to signal 33.			
17%	CASSIOPEA N	SKIN.S	42.00	-	o	dd-				
94%	CEMBRA MONEY BAN	CMBN.S	99.70	+	+	do	BUY only if the resistance levels at 101/102 are broken. Could then signal 107 or 111/116.			
0%	CEVA LOGISTICS N	CEVAL.S	29.60	d-	d-	d-				
56%	CHAM GROUP AG	CHAMA.S	426.00	+	uo	uo				
61%	CI COM SA I	CIE.S	2.50	o	uu+	uu+				
28%	CICOR TECH	CICN.S	45.45	uo	-	u+				
67%	CIE FIN TR I	CFT.S	102.00	-	+	u+				
89%	CLARIANT N	CLN.S	19.75	uu+	u+	+	BUY only if the resistance at 20.50 is broken. Next target is 22 or 24.50.			
50%	COLTENE N	CLTN.S	78.00	-	uu+	u+				
28%	COMET HOLDING	COTNE.S	84.50	o	-	uu+				
100%	CONZZETA HLDNG I	CONC.S	839.00	u+	u+	+	BUY if the resistance at 850 / 857 is broken. Next target is 870 or 895 / 910.			
0%	COSMO PHARM N	COPN.S	82.50	-	-	-				

# SPI Index 200 constituent stocks - alphabetically (Co-La)

SCORE	COMPANY	RIC	PRICE	LT	MT	ST	COMMENT	DATE BOUGHT	PRICE BOUGHT	PROFIT or LOSS
11%	CPH CHEM&PAPER	CPHN.S	81.00	-	-	uu+				
56%	CREALOGIX HLDG	CLXN.S	93.60	uo	uo	do				
100%	CS GROUP AG	CSGN.S	12.80	u+	u+	+	see chart			
100%	DAETWYL I	DAE.S	163.20	+	+	+	BUY only if the resistance at 165 is broken. Next target is 170, 176 or 186.			
50%	DKSH N	DKSH.S	48.76	-	uo	u+				
39%	DORMAKABA HOLD	DOKA.S	685.00	o	uo	u+				
89%	DUFRI AG	DUFN.S	84.76	uo	u+	u+	Must rise above 87 to signal 88.50, 90.50/92 or 96.			
94%	EDISUN POWER	ESUN.S	145.00	+	+	+				
61%	EFG INT N	EFGN.S	6.23	o	uu+	+				
61%	ELMA N	ELMN.S	416.00	+	do	do				
0%	EMMI N	EMMN.S	803.50	d-	-	-				
28%	EMS-CHEMIE N	EMS.N	593.00	o	-	uu+				
39%	EVOLVA HOLD AG	EVE.S	0.19	-	+	do	Major turnaround will be signaled if 0.22 / 0.24 is broken.			
50%	FEINTOOL N	FTON.S	58.00	-	uu+	uu+				
78%	FISCHER N	FIN.S	853.50	o	uu+	u+	BUY if the resistance at 855 is broken. Next resistance is 865 and 885.			
100%	FLUGHAFEN ZURICH	FHZN.S	186.00	+	uu+	u+	Must rise above 191 to signal a turnaround with resistance at 195, 201 and 208.			
17%	FORBO N	FORN.S	1'433.00	-	-	+				
94%	GALENICA	GALE.S	54.70	+	+	do				
56%	GAM N	GAMH.S	4.19	u+	uo	+				
11%	GAVAZZI CARLO I	GAV.S	260.00	o	-	d-				
83%	GEBERIT N1	GEBN.S	463.80	+	uu+	+	ADD to the position only if the resistance cluster at 465 / 470 is broken.	19.08.2019	438.10	5.87%
83%	GIVAUDAN N	GIVN.S	2'737.00	uu+	uu+	u+	BUY only if the resistance at 2780 is broken. Next resistance is 2860.			
83%	GLARNER KB N	GLKBN.S	30.60	+	+	d-				
100%	GR KTBK PS	GRKP.S	1'470.00	+	+	u+				
22%	GRP MINOTERIES	GMI.S	360.00	-	o	uo				
94%	GURIT I	GUR.S	1'154.00	+	+	+				
100%	HELVETIA HLDG	HELN.S	135.00	+	+	+	Next resistance is 136.50, 138, 140 and 146.			
0%	HIAG IMMOBILIEN	HIAG.S	112.50	d-	dd-	-				
89%	HIGHL EVNT & ENT	HLEE.S	19.80	+	+	do				
50%	HOCHDORF N	HOCN.S	67.60	-	uu+	uu+				
11%	HUBER & S N	HUBN.S	62.80	-	-	uu+				
39%	HYPO BK LENZB N	HBLN.S	4'500.00	dd-	do	do				
89%	IDORSIA N	IDIA.S	24.98	+	+	do	Sell the position at breakeven and wait for the unfolding correction to bottom.			
94%	IMPLENIA N	IMP.N	33.90	+	+	+	Resistance is at 34, 38.	29.08.2019	32.10	5.61%
100%	INFICON N	IFCN.S	638.00	+	u+	u+	BUY if the resistance at 645 is broken. Next target is 670.			
33%	INTERROLL N	INRN.S	1'890.00	-	uo	+				
94%	INTERSHOP N	ISN.S	534.00	+	+	+				
94%	INVESTIS N	IREN.S	71.40	+	+	o				
100%	IVF HARTMANN	VBSN.S	158.00	uu+	uu+	uu+				
100%	JULIUS BAER N	BAER.S	43.35	u+	uu+	u+	BUY. Likely to rise to 44.50, 45.20, 46.80 or 50 / 53.	10.09.2019	43.30	
94%	JUNGFRAUBAHN N	JFN.S	157.00	+	+	+				
33%	KARDEX I	KARN.S	140.60	-	uo	+	BUY if the resistance at 141 is broken. Resistance is 142.50, 145, 149, 152.			
17%	KLINGELNBERG N	KLIN.S	29.10	o	-	uo				
78%	KOMAX N	KOMN.S	207.00	uo	u+	+	BUY. The long-term downtrend is reversing with a break of 210 / 215.	10.09.2019	204.40	
28%	KTM INDUSTRIES/d	KTMI.VI	51.00	-	uo	do				
56%	KUDELSKI	KUD.S	6.40	u+	uo	u+				
100%	KUEHNE & NAGEL	KNIN.S	148.35	+	u+	u+	BUY only if the resistance at 151 / 152 is broken. Next target is 158.			
28%	KUROS BIOSCIENCE	KURN.S	1.57	uo	uo	d-				
78%	LAFARGEHOLCIM	LHN.S	48.51	o	uu+	u+	BUY if the resistance at 49.50 is broken. Next target is 50.50, 51, 53.			
17%	LALIQUE	LLQ.S	39.00	-	-	u+				
100%	LANDIS GYR	LANDI.S	87.10	+	+	uu+				
67%	LASTMINUTE ORD	LMN.S	31.50	+	+	d-				
28%	LECLANCHE N	LECN.S	1.58	o	o	-				



# SPI Index 200 constituent stocks - alphabetically (La-Se)

SCORE	COMPANY	RIC	PRICE	LT	MT	ST	COMMENT	DATE BOUGHT	PRICE BOUGHT	PROFIT or LOSS
44%	LEM HOLDING N	LEHN.S	1'320.00	O	uo	u+	TOOK PROFIT OF 7.5%.			
67%	LEONTEQ	LEON.S	33.76	-	uu+	+	Downtrend could finally reverse with a rise above 34.20 / 35.30. Resistance is 38.			
78%	LIECH LANDBK	LLBN.S	62.70	uo	u+	+				
89%	LINDT & SP N	LISN.S	81'100.00	do	u+	u+				
72%	LINDT & SP PS	LISP.S	7'280.00	+	O	uu+				
100%	LOGITECH	LOGN.S	40.73	+	+	+	Will have to rise above 42 / 43 to signal 44.50, 46.50, 48.50.			
89%	LONZA GRP AG N	LONN.S	345.80	+	+	+	Sell the position if 342 is broken.	11.06.2019	329.50	4.95%
33%	LUZERNER KB N	LUKN.S	425.00	-	uo	u+				
83%	MCH GROUP AG	MCHN.S	23.20	+	+	u+				
0%	MEDACTA GROUP	MOVE.S	78.10	-	d-	-				
11%	MEDARTIS	MEDA.S	44.95	-	-	u+				
28%	MEIER TOBLER GRO	METG.S	15.22	O	O	d-				
50%	METALL ZUG	METN.S	2'040.00	-	u+	+				
39%	MEYER BURGER N	MBTN.S	0.36	O	uo	uu+				
17%	MIKRON N	MIKN.S	7.46	-	-	u+				
72%	MOBILEZONE HLD I	MOZN.S	9.79	uo	u+	+				
94%	MOBIMO HLDG	MOBN.S	280.50	+	+	do	Hold.	02.07.2019	263.00	6.65%
89%	MOLECULAR PARTNE	MOLN.S	14.84	uu+	u+	uu+				
94%	NESTLE SA	NESN.S	108.96	+	+	do	see chart			
17%	NEWRON PHARMA N	NWRN.S	5.60	-	O	-				
39%	NOVARTIS N	NOVN.S	86.75	do	-	+	see chart	24.05.2019	85.55	1.40%
89%	O FUESSL I N	OFN.S	90.50	u+	u+	uu+				
50%	OBSEVA SA/d	OBSV.O	9.34	O	+	do				
50%	OC OERLIKON CORP	OERL.S	9.80	-	uu+	+				
78%	ORASCOM DEV H	ODHN.S	15.04	O	+	+	Hold.	11.06.2019	13.96	7.74%
56%	ORIOR N	ORON.S	83.20	do	do	dd-				
94%	PANALPINA WELT	PWTN.S	235.80	+	+	+				
89%	PARGESA I	PARG.S	74.75	u+	uu+	+	Long-term resistance is at 76.50 and 78.50. Next resistance is 81, 89.			
94%	PARTNERS GROUPAG	PGHN.S	777.20	+	+	do				
78%	PEACH PROP	PEAN.S	32.30	+	do	do	Sell the position if 31 is broken. Supports are 30, 29 and 27.80.	27.06.2019	34.10	-5.28%
22%	PERFECT HOLDING	PRFN.S	0.02	O	-	uu+				
33%	PERROT DUVAL I1	PEDU.S	132.00	+	-	d-				
33%	PHOENIX I	PM.S	408.50	-	uo	uu+				
83%	PLAZZA AG	PLANZ.S	254.00	+	+	d-				
17%	POENINA	PNHO.S	44.60	uo	-	uo				
61%	POLYPHOR N	POLN.S	7.10	uo	u+	+				
6%	PRIVATE EQUITY N	PEHN.S	56.00	-	-	uo				
67%	PSP CH PRPTY N	PSPN.S	124.40	+	+	dd-				
17%	RELIEF THERAPEUT	RLFB.S	0.0014	-	do	dd-				
67%	RICHEMONT N	CFR.S	79.08	u+	uo	+	Resistance is at 82 / 83.			
100%	RIETER N	RIEN.S	141.00	u+	+	+	Bullish turnaround to be signalled if 145 / 153 is broken. Next resistance is 162, 170, 185.			
61%	ROCHE HOLDING AG	ROG.S	267.30	do	do	O	see chart	24.05.2019	272.10	-1.76%
100%	ROMANDE ENERGIE	HREN.S	1'270.00	+	uu+	u+	Sell the position if 1200 is broken.	10.09.2018	1230.00	3.25%
39%	SANTHERA PHARMA	SANN.S	12.72	O	O	+				
6%	SCHAFFNER N	SAHN.S	192.00	-	-	uo				
100%	SCHINDLER N	SCHN.S	229.40	+	+	+				
100%	SCHINDLER PS	SCHP.S	231.70	+	uu+	+	BUY if the resistance at 239 is broken. Could rise to 270.			
44%	SCHLATTER N	STRN.S	39.20	uo	uo	u+				
6%	SCHMOLZ+BICKENB	STLN.S	0.27	-	-	uo				
100%	SCHWEITER I	SWTQ.S	952.00	u+	u+	+				
100%	SENSIRION N	SENSI.S	39.65	+	+	+	Hold.	27.08.2019	37.50	5.73%
89%	SFS GROUP	SFSN.S	79.15	uo	uu+	u+				
89%	SGS N	SGSN.S	2'468.00	O	uu+	u+				

# SPI Index 200 constituent stocks - alphabetically (Sf-Z)

SCORE	COMPANY	RIC	PRICE	LT	MT	ST	COMMENT	DATE BOUGHT	PRICE BOUGHT	PROFIT or LOSS
83%	SIEGFRIED N	SFZN.S	406.50	+	+	+	Must rise above 415 to signal 450 / 455. Add to the position if 415 is broken.	21.08.2019	371.20	9.51%
78%	SIG COMB GRP N	SIGNC.S	12.48	+	+	do	Hold.	24.07.2019	11.20	11.43%
44%	SIKA	SIKA.S	147.50	o	uo	u+				
94%	SNB N	SNBN.S	5'700.00	uu+	+	+				
50%	SONOVA H AG	SOON.S	220.00	+	do	dd-				
100%	SPICE PRIV AG	SPCE.S	22.60	u+	uu+	uu+				
78%	ST GALLER KB N	SGKN.S	442.50	uo	+	+				
11%	STADLER RAIL	SRAIL.S	43.26	na	d-	do	Support is at 42.75, 42.10, 41.40.			
39%	STARRAG N	STGN.S	48.00	o	uo	o				
100%	STRAUMANN HLD N	STMN.S	821.80	uu+	uu+	uu+				
61%	SULZER N	SUN.S	100.30	o	uu+	+				
72%	SUNRISE N	SRCG.S	74.60	do	uo	uu+	Sell the position if 71 is broken. Add to the position if 76 and 79 is broken.	20.08.2019	78.25	-4.66%
89%	SWATCH GROUP I	UHR.S	279.70	u+	u+	u+	Must rise above 283 / 286 to signal 295, 304 or 320.			
89%	SWATCH GROUP N	UHRN.S	52.90	o	u+	+				
67%	SWISS FIN&PROP	SFPN.S	94.00	+	do	dd-				
100%	SWISS LIFE HLDG	SLHN.S	491.40	u+	uu+	u+	Next resistance is 497.50 and 504.			
83%	SWISS PRIME SITE	SPSN.S	96.25	+	+	dd-	Reaching the long-term resistance at 96 / 101.	09.01.2019	82.20	17.09%
100%	SWISS RE N	SRENH.S	102.40	+	+	+	BUY if the resistance at 103 is broken. Likely to rise to 107 or 114.			
67%	SWISSCOM N	SCMN.S	481.30	+	o	dd-				
89%	SWISSQUOTE GRP N	SQN.S	42.58	+	+	uu+				
11%	TAMEDIA N	TAMN.S	100.00	uo	-	-				
28%	TECAN HLD N	TECN.S	235.00	uo	-	uu+				
72%	TEMENOS N	TEMN.S	163.95	uo	uu+	u+				
17%	THURGAUER KB PS	TKBP.S	106.00	dd-	do	d-				
0%	TITL BN BERG N	TIBN.S	315.00	-	d-	d-				
11%	TORNOS HOLDING N	TOHN.S	6.92	-	-	uu+				
61%	U-BLOX N	UBXN.S	74.20	o	uu+	uu+	BUY and add if 78 is broken. Could turn around with resistance at 86.	10.09.2019	74.20	
61%	UBS GROUP N	UBSG.S	11.39	uo	uu+	+	BUY only if the resistances around 11.50 is cleared. Next resistance is 12.30 or 13.70.			
0%	VALARTIS GROUP	VLRT.S	10.20	-	-	d-				
78%	VALIANT N	VATN.S	106.00	uo	u+	+				
89%	VALORA N	VALN.S	271.00	+	+	do				
44%	VARIA US PROP	VARN.S	36.50	o	o	u+				
100%	VAT GROUP N	VACN.S	130.70	+	uu+	+	BUY and add if 134 is broken. The uptrend from January is resuming.	10.09.2019	36.50	
100%	VAUDOISE VERS N	VAHN.S	532.00	+	+	uu+				
100%	VETROPACK I	VET.S	2'675.00	+	+	+	Hold.	29.08.2019	2485.00	7.65%
94%	VIFOR PHARMA	VIFN.S	154.40	+	+	o	Hold.	11.06.2019	143.10	7.90%
28%	VILLARS N	VILN.S	780.00	-	o	uo				
6%	VON ROLL I	ROL.S	0.86	-	-	uo				
78%	VONTOBEL N	VONN.S	54.95	uo	uu+	u+	BUY and add if 56 is broken. Major resistance is at 57.50 and 62.	10.09.2019	55.00	
28%	VP BANK AG	VPBN.S	154.60	o	-	o				
17%	VZ HOLDING N	VZN.S	287.00	-	o	-				
17%	WALLISER KTBK	WKB.S	112.50	-	o	-				
83%	WARTECK N	WARN.S	1'950.00	+	+	dd-				
89%	WISEKEY N	WIHN.S	2.65	u+	u+	+				
39%	YPSOMED HOLDING	YPSN.S	124.80	o	uo	o				
100%	ZEHNDER I	ZEHN.S	37.50	+	uu+	uu+				
83%	ZUEBLIN N	ZUBN.S	26.60	+	uo	uu+				
100%	ZUG ESTATE HLD	ZUGN.S	2'020.00	+	+	+				
0%	ZUGER KB I	ZG.S	6'100.00	d-	d-	d-				
0%	ZUR ROSE GROUP N	ROSEG.S	87.70	-	-	-				
100%	ZURICH INSURANCE	ZURN.S	374.00	+	+	u+	BUY. Likely to rise to 410 or 440.	10.09.2019	374.00	
6%	ZWAHLEN & MAYR	ZWM.S	250.00	-	-	o				

## ABB – daily chart

ABB must rise above 19.80 / 20.20 to signal 21 / 21.50 or 23 / 24.





## CS GROUP – daily chart

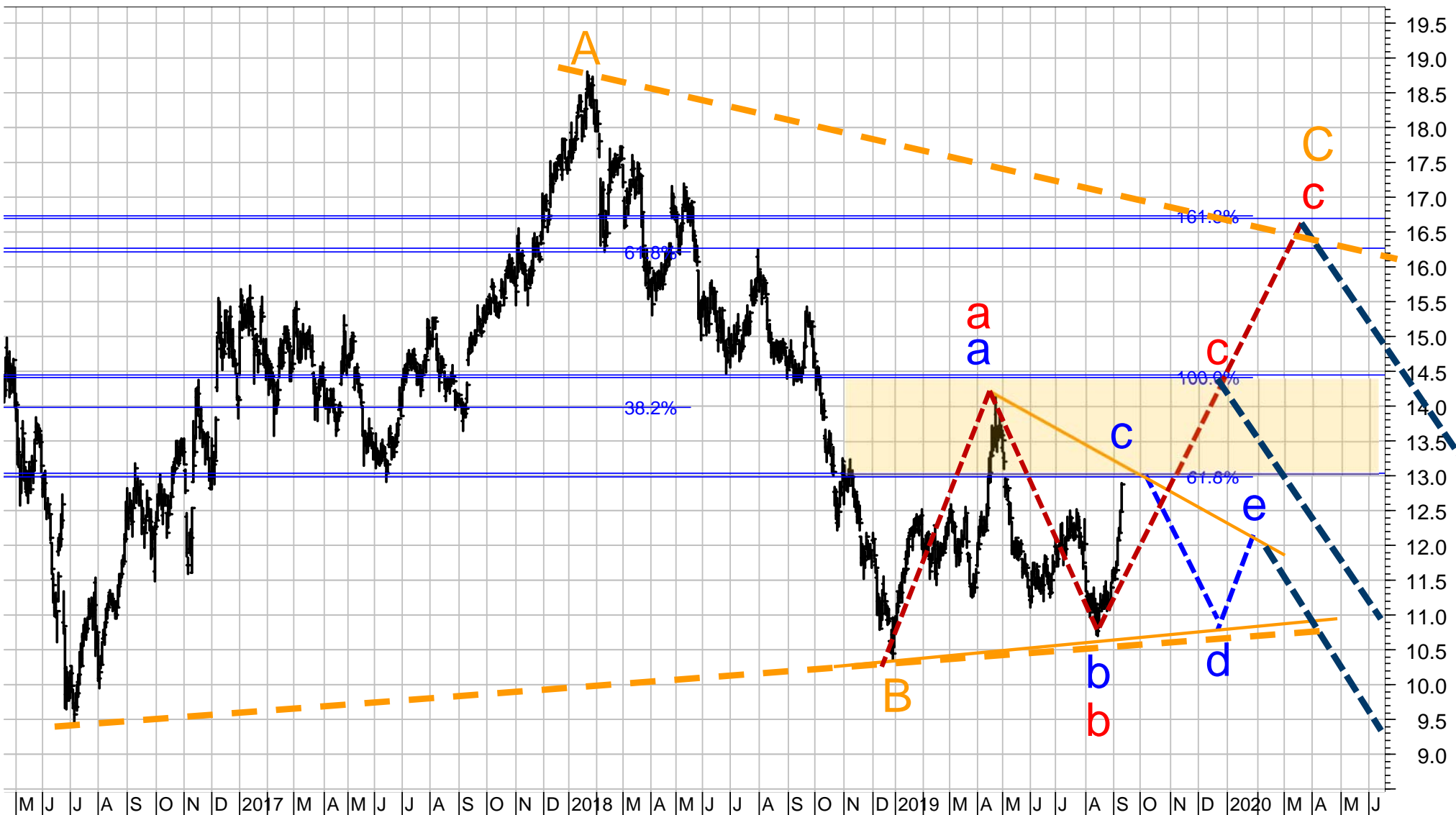
CSG is forming either a TRIANGLE or an Inverse FLAT.

The TRIANGLE a-b-c-d-e (blue) has the key resistance at 13 ( $c=0.618 \times a$ ). The triangle could be followed by another new low below 10.

The FLAT a-b-c (red) has major resistance at 14.50 ( $c=1 \times a$ ) or 16.70 ( $c=1.618 \times a$ ).

Thus, a break of 13.10 will trigger a medium-term buy signal.

The big picture also can be interpreted as a TRIANGLE (orange), which originated in July 2016. Wave C= $0.618 \times$  Wave A at 16.20.

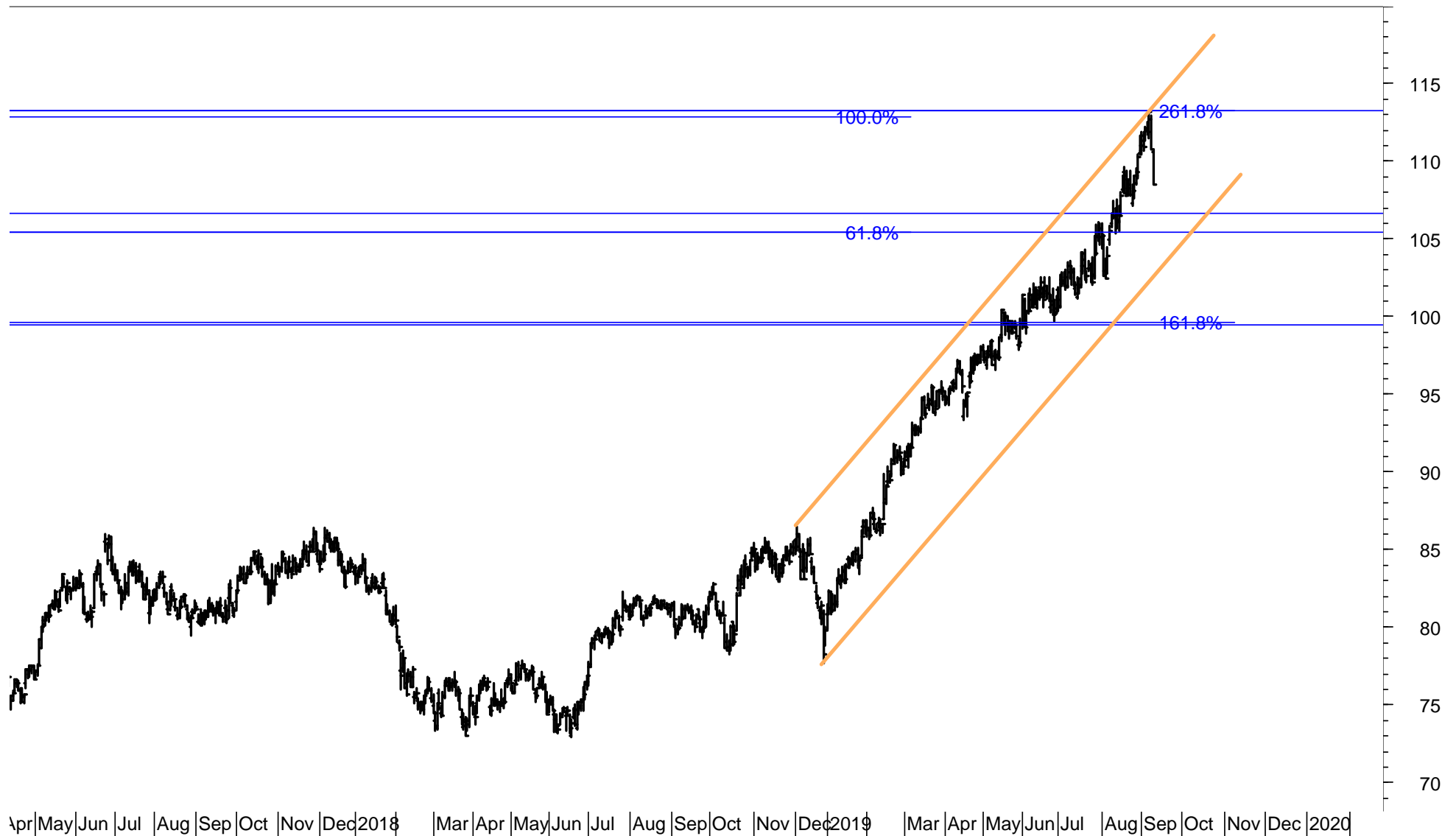


## NESTLE – daily chart

Two weeks ago I stated that “Nestlé is likely to reach the resistance at 113 next.”

Nestlé rose to 113 and started to sell off.

I am looking for an extended period of corrective action with supports at 105 and 99.



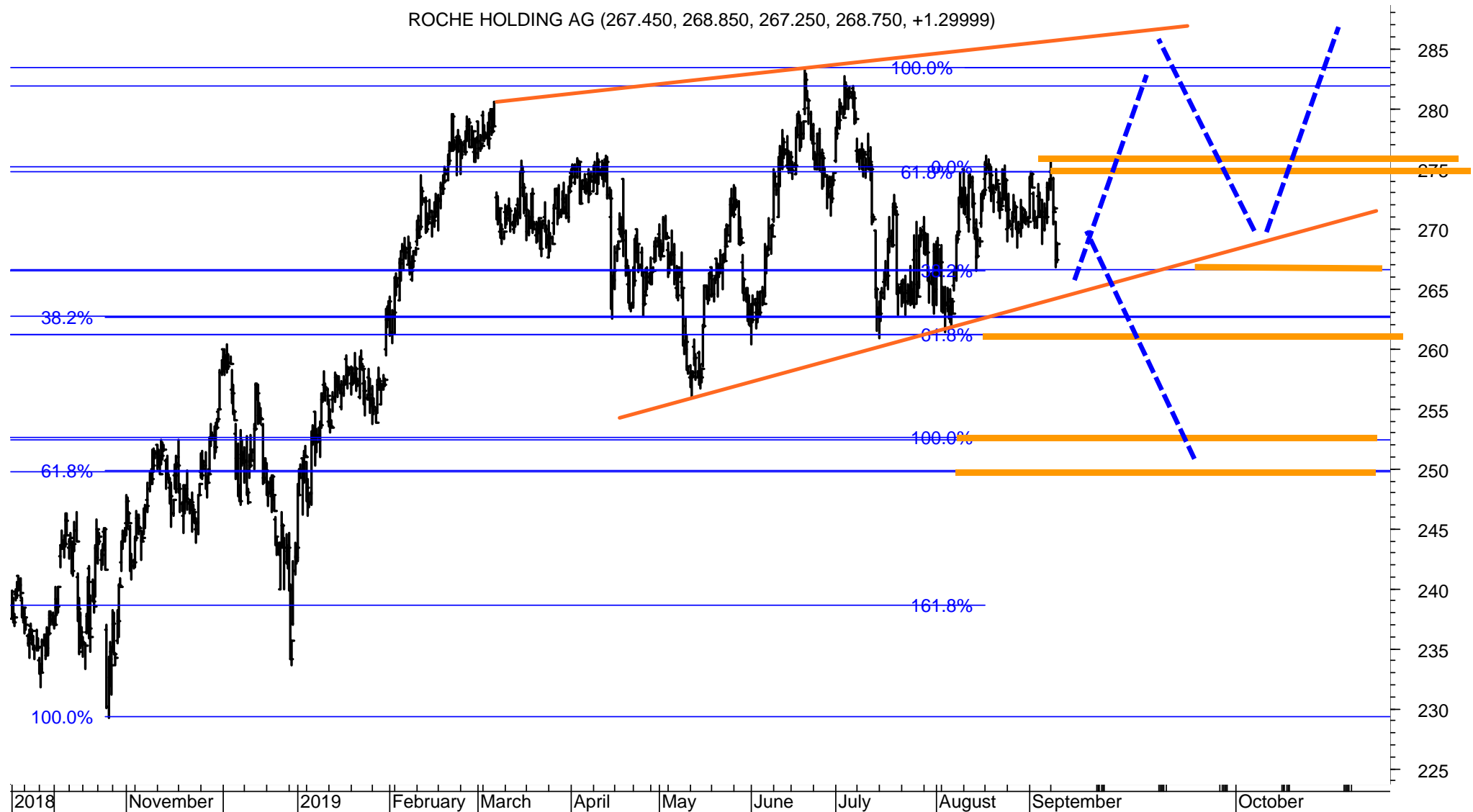
## NOVARTIS – 240-minute chart

Novartis will trigger a medium-term sell signal if it breaks the support range at 86 /83.50.  
Next supports are 80 and 72.



## ROCHE GS – 240-minute chart

Roche failed again to break the major resistance at 275 / 277.  
A major decline would be signaled if 266 and 261 is broken.  
Next major support is at 252 / 250 or 238.



# STOXX 200 stocks – listed according to the Score (range from 100% to 0%, 40%-60% is neutral)

100%	A P MOLLER MAERSK B	MAERSKb.CO
100%	ACCOR	ACCP.PA
100%	ASML HOLDING	ASML.AS
100%	ASSICURAZIONI GENERALI	GASI.MI
100%	ATLAS COPCO A	ATCOa.ST
100%	BNP PARIBAS	BNPP.PA
100%	BOLIDEN ORD SHS	BOL.ST
100%	CRH (DUB)	CRH.I
100%	DEUTSCHE BANK (XET)	DBKGn.DE
100%	DEUTSCHE BOERSE (XET)	DB1Gn.DE
100%	DEUTSCHE POST (XET)	DPWGn.DE
100%	FIAT CHRYSLER AUTOS.	FCHA.MI
100%	HENKEL PREF. (XET)	HNKG.DE
100%	HERMES INTL.	HRMS.PA
100%	INDITEX	ITX.MC
100%	INDUSTRIAVARDEN A	INDUa.ST
100%	INTESA SANPAOLO	ISP.MI
100%	INVESTOR B	INVEb.ST
100%	KONE 'B'	KNEBV.HE
100%	LOOMIS B	LOOMb.ST
100%	MUENCHENER RUCK. (XET)	MUVGn.DE
100%	RWE (XET)	RWEG.DE
100%	SAFRAN	SAF.PA
100%	SCHNEIDER ELECTRIC	SCHN.PA
100%	SKANSKA B	SKAb.ST
100%	SKF B	SKFb.ST
100%	SOCIETE GENERALE	SOGN.PA
100%	SVENSKA CELLULOSA AKTIEB	SCAb.ST
100%	THYSSENKRUPP (XET)	TKAG.DE
100%	TRELLEBORG B	TRELB.ST
100%	VODAFONE GROUP	VOD.L
100%	VOLKSWAGEN PREF. (XET)	VOWG_p.DE
94%	BAYER (XET)	BAYGn.DE
94%	CARLSBERG B	CARLb.CO
94%	DSV 'B'	DSV.CO
94%	EPIROC A	EPiRa.ST
94%	KINNEVIK B	KINVb.ST
94%	PANDORA	PNDORA.CO
89%	BANK POLSKA KASA OPIEKI	PEO.WA
89%	BASF (XET)	BASFn.DE
89%	CONTINENTAL (XET)	CONG.DE
89%	COVESTRO (XET)	iCOV.DE
89%	ESSILORLUXOTTICA	ESLX.PA
89%	GENMAB	GEN.CO
89%	HEIDELBERGCEMENT (XET)	HEIG.DE
89%	HEXPOL B	HPOLb.ST
89%	INFINEON TECHS. (XET)	IFXGn.DE
89%	INNOGY (XET)	IGY.DE
89%	KBC GROUP	KBC.BR
89%	KONINKLIJKE AHOLD DELHA	AD.AS

89%	LUNDIN PETROLEUM	LUPE.ST
89%	NORSK HYDRO	NHY.OL
89%	PERNOD-RICARD	PERP.PA
89%	PEUGEOT	PEUP.PA
89%	PHILIPS ELTN.KONINKLIJKE	PHG.AS
89%	TELIA COMPANY	TELIA.ST
89%	TGS-NOPEC GEOPHS.	TGS.OL
89%	THALES	TCFP.PA
89%	UNILEVER	UNA.AS
89%	VINCI	SGEF.PA
89%	VOLVO B	VOLVb.ST
83%	ADIDAS (XET)	ADSGn.DE
83%	AIRBUS	AIR.PA
83%	ANHEUSER-BUSCH INBEV	ABI.BR
83%	CASTELLUM	CAST.ST
83%	CD PROJECT RED	CDR.WA
83%	FERRARI (MIL)	RACE.MI
83%	LVMH	LVMH.PA
83%	NOVO NORDISK 'B'	NOVOb.CO
83%	PKO BANK	PKO.WA
83%	SANOFI	SASY.PA
83%	SIMCORP	SIM.CO
83%	YARA INTERNATIONAL	YAR.OL
78%	AKER BP	AKERBP.OL
78%	AMBU B	AMBUb.CO
78%	ARCELORMITTAL	MT.AS
78%	DAIMLER (XET)	DAIGn.DE
78%	DANSKE BANK	DANSKE.CO
78%	ENEL	ENEL.MI
78%	EQUINOR	EQNR.OL
78%	GJENSIDIGE FORSIKRING	GJFS.OL
78%	IMPERIAL BRANDS	IMB.L
78%	L'OREAL	OREP.PA
78%	MERCK KGAA (XET)	MRCG.DE
78%	MICHELIN	MICP.PA
78%	NORDEA BANK (OME)	NDASE.ST
78%	REPSOL YPF	REP.MC
78%	SCHIBSTED A	SBSTA.OL
78%	SKANDINAVISKA ENSKILDA B	SEBa.ST
78%	SUBSEA 7	SUBC.OL
78%	SWEDBANK A	SWEDa.ST
78%	TESCO	TSCO.L
72%	ENDESA	ELE.MC
72%	WIRECARD (XET)	WDIG.DE
67%	ALFA LAVAL	ALFA.ST
67%	ALLIANZ (XET)	ALVG.DE
67%	ASSA ABLOY B	ASSAb.ST
67%	BEIERSDORF (XET)	BEIG.DE
67%	CHRISTIAN DIOR	DIOR.PA
67%	DANONE	DANO.PA

67%	IBERDROLA	IBE.MC
67%	ICA GRUPPEN	ICAA.ST
67%	ORKLA	ORK.OL
67%	ORSTED	ORSTED.CO
67%	SVENSKA HANDELSBANKEN A	SHBa.ST
67%	SWEDISH MATCH	SWMA.ST
67%	UNILEVER (UK)	ULVR.L
61%	BBV.ARGENTARIA	BBVA.MC
61%	ELECTROLUX B	ELUXb.ST
61%	FRESENIUS MED.CARE (XET)	FMEG.DE
61%	ING GROEP	INGA.AS
56%	AAK	AAK.ST
56%	SAP (XET)	SAPG.DE
56%	TRYG	TRYG.CO
56%	VIVENDI	VIV.PA
50%	ABN AMRO BANK	ABNd.AS
50%	AIR LIQUIDE	AIRP.PA
50%	BMW (XET)	BMWG.DE
50%	COMPASS GROUP	CPG.L
50%	DEUTSCHE LUFTHANSA (XET)	LHAG.DE
50%	DNB	DNB.OL
50%	EDF	EDF.PA
50%	ENI	ENI.MI
50%	FASTIGHETS BALDER B	BALDb.ST
50%	FRESENIUS (XET)	FREG.DE
50%	GLAXOSMITHKLINE	GSK.L
50%	GLENORE	GLEN.L
50%	JYSKE BANK	JYSK.CO
50%	SAAB B	SAABb.ST
50%	SANDVIK	SAND.ST
50%	TELE2 B	TEL2b.ST
50%	TELEFONICA	TEF.MC
50%	TOTAL	TOTF.PA
44%	AXA	AXAF.PA
44%	BANCO SANTANDER	SAN.MC
44%	DEUTSCHE TELEKOM (XET)	DTEGn.DE
44%	SAMPO 'A'	SAMPO.HE
44%	STANDARD CHARTERED	STAN.L
39%	ASTRAZENECA	AZN.L
33%	ANGLO AMERICAN	AAL.L
33%	BARCLAYS	BARC.L
33%	BRITISH AMERICAN TOBACCO	BATS.L
33%	BT GROUP	BT.L
33%	CHRISTIAN HANSEN HOLDING	CHRH.CO
33%	COLOPLAST B	COLOb.CO
33%	ISS	ISS.CO
33%	KINDRED GROUP SDR	KINDsdb.ST
33%	NOVOZYMES B	NZYMB.CO
33%	RECKITT BENCKISER GROUP	RB.L
33%	RELX	RELL.L

33%	RIO TINTO	RIO.L
33%	ROYAL BANK OF SCTL.GP.	RBS.L
33%	SECURITAS B	SECUb.ST
33%	SIEMENS (XET)	SIEGn.DE
33%	STOREBRAND	STB.OL
28%	AENA SME	AENA.MC
28%	ASSOCIATED BRIT.FOODS	ABF.L
28%	HEINEKEN	HEIN.AS
28%	HUSQVARNA B	HUSQb.ST
28%	LINDE (XET)	LINI.DE
28%	LLOYDS BANKING GROUP	LLOY.L
28%	NOKIA	NOKIA.HE
22%	DIAGEO	DGE.L
22%	ESSITY B	ESSITYb.ST
22%	FABEGE	FABG.ST
22%	GETINGE B	GETIb.ST
22%	SALMAR	SALM.OL
17%	AMADEUS IT GROUP	AMA.MC
17%	BHP GROUP	BHPb.L
17%	BP	BP.L
17%	E ON N (XET)	EONGn.DE
17%	ELEKTA B	EKTAAb.ST
17%	HEINEKEN HOLDING	HEIO.AS
17%	HEXAGON B	HEXAb.ST
17%	HSBC HOLDINGS	HSBAL.L
17%	KERING	PRTP.PA
17%	KGHM	KGH.WA
17%	ORANGE	ORAN.PA
17%	PLKNC.NAFTOWY ORLEN	PKN.WA
17%	POLISH OIL AND GAS	PGN.WA
17%	PRUDENTIAL	PRU.L
17%	PZU GROUP	PZU.WA
17%	ROYAL DUTCH SHELL A	RDSa.AS
17%	SANTANDER BANK POLSKA	SPL1.WA
17%	SIEMENS (XET) HEALTHINEER	SHLG.DE
17%	VESTAS WINDSYSTEMS	VWS.CO
17%	WFD UNIBAIL RODAMCO STA	URW.AS
11%	DOMETIC GROUP	DOMETIC.ST
11%	ENGIE	ENGIE.PA
11%	NIBE INDUSTRIER B	NIBeb.ST
11%	TELENOR	TEL.OL
6%	ADYEN	ADYEN.AS
6%	ERICSSON B	ERICb.ST
6%	GN STORE NORD	GN.CO
6%	NESTE	NESTE.HE
0%	DASSAULT SYSTEMES	DAST.PA
0%	NATIONAL GRID	NG.L
0%	NATURGY ENERGY	NTGY.MC
0%	SWEDISH ORPHAN BIOVITRU	SOBIV.ST
0%	VONOVIA (XET)	VNAn.DE

# STOXX 200 stocks – listed alphabetically (A-Infineon)

SCORE	COMPANY	RIC	PRICE	LT	MT	ST
100%	A P MOLLER MAERSK B	MAERSKb.CO	7'832.00	u+	u+	+
56%	AAK	AAK.ST	192.50	+	o	uo
50%	ABN AMRO BANK	ABNd.AS	17.35	-	uu+	u+
100%	ACCOR	ACCP.PA	40.00	+	+	+
83%	ADIDAS (XET)	ADSGn.DE	277.05	+	uu+	+
6%	ADYEN	ADYEN.AS	650.40	-	-	o
28%	AENA SME	AENA.MC	164.55	o	-	+
50%	AIR LIQUIDE	AIRP.PA	123.55	+	do	dd-
83%	AIRBUS	AIR.PA	126.84	+	uo	u+
78%	AKER BP	AKERBP.OL	250.60	uo	u+	u+
67%	ALFA LAVAL	ALFA.ST	186.50	-	uu+	+
67%	ALLIANZ (XET)	ALVG.DE	206.65	u+	uo	u+
17%	AMADEUS IT GROUP	AMA.MC	67.46	-	-	u+
78%	AMBU B	AMBUb.CO	114.00	uo	u+	uu+
33%	ANGLO AMERICAN	AAL.L	1'855.40	-	uo	u+
83%	ANHEUSER-BUSCH INBEV	ABI.BR	86.06	+	+	u+
78%	ARCELORMITTAL	MT.AS	14.27	uo	u+	+
100%	ASML HOLDING	ASML.AS	219.15	+	+	+
67%	ASSA ABLOY B	ASSAb.ST	211.30	+	uo	uu+
100%	ASSICURAZIONI GENERALI	GASI.MI	17.20	+	u+	+
28%	ASSOCIATED BRIT.FOODS	ABF.L	2'305.00	o	-	u+
39%	ASTRAZENECA	AZN.L	7'004.00	+	do	-
100%	ATLAS COPCO A	ATCOa.ST	300.00	+	uu+	+
44%	AXA	AXAF.PA	21.97	o	uo	u+
44%	BANCO SANTANDER	SAN.MC	3.62	uo	uo	u+
89%	BANK POLSKA KASA OPIEKI	PEO.WA	105.55	uo	uu+	u+
33%	BARCLAYS	BARC.L	140.78	-	uo	u+
89%	BASF (XET)	BASFn.DE	62.28	u+	u+	+
94%	BAYER (XET)	BAYGn.DE	67.26	+	+	do
61%	BBV.ARGENTARIA	BBVA.MC	4.60	uo	uu+	+
67%	BEIERSDORF (XET)	BEIG.DE	111.40	+	+	dd-
17%	BHP GROUP	BHPB.L	1'758.40	-	-	u+
50%	BMW (XET)	BMWG.DE	63.22	-	u+	u+
100%	BNP PARIBAS	BNPP.PA	43.71	u+	u+	+
100%	BOLIDEN ORD SHS	BOL.ST	237.40	u+	u+	+
17%	BP	BP.L	504.80	-	-	u+
33%	BRITISH AMERICAN TOBACCO	BATS.L	2'895.50	o	uo	uo
33%	BT GROUP	BT.L	169.08	-	uo	u+
94%	CARLSBERG B	CARLb.CO	1'015.50	+	+	o
83%	CASTELLUM	CAST.ST	201.00	+	+	dd-
83%	CD PROJECT RED	CDR.WA	260.00	+	+	+
67%	CHRISTIAN DIOR	DIOR.PA	459.60	+	uo	+
33%	CHRISTIAN HANSEN HOLDING	CHRH.CO	580.80	-	uo	+
33%	COLOPLAST B	COLOb.CO	797.00	+	dd-	-
50%	COMPASS GROUP	CPG.L	2'035.00	+	do	dd-
89%	CONTINENTAL (XET)	CONG.DE	121.64	u+	uu+	u+
89%	COVESTRO (XET)	1COV.DE	42.39	u+	u+	+
100%	CRH (DUB)	CRH.I	30.52	+	+	+
78%	DAIMLER (XET)	DAIGn.DE	46.45	uo	uu+	u+
67%	DANONE	DANO.PA	80.00	+	+	dd-

SCORE	COMPANY	RIC	PRICE	LT	MT	ST
17%	DANSKE BANK	DANSKE.CO	87.72	o	-	o
11%	DASSAULT SYSTEMES	DAST.PA	128.50	-	-	u+
39%	DEUTSCHE BANK (XET)	DBKGn.DE	6.43	o	o	uu+
72%	DEUTSCHE BOERSE (XET)	DB1Gn.DE	128.95	+	+	do
100%	DEUTSCHE POST (XET)	DPWGn.DE	29.23	+	+	+
33%	DEUTSCHE TELEKOM (XET)	DTEGn.DE	14.90	dd-	do	+
83%	DIAGEO	DGE.L	3'444.50	+	+	+
6%	DNB	DNB.OL	142.65	-	d-	o
11%	DOMETIC GROUP	DOMETIC.ST	77.32	do	-	d-
100%	DSV 'B'	DSV.CO	666.60	+	u+	+
11%	E ON N (XET)	EONGn.DE	8.34	-	-	u+
11%	EDF	EDF.PA	10.58	-	-	+
11%	ELECTROLUX B	ELUXb.ST	218.80	o	d-	dd-
11%	ELEKTA B	EKTab.ST	123.00	do	-	-
78%	ENDESA	ELE.MC	23.44	+	+	+
100%	ENEL	ENEL.MI	6.50	+	+	+
83%	ENGIE	ENGIE.PA	13.66	+	+	+
28%	ENI	ENI.MI	13.30	-	o	u+
67%	EPIROC A	EPIRa.ST	98.70	+	+	+
11%	EQUINOR	EQNR.OL	151.00	-	-	u+
0%	ERICSSON B	ERICb.ST	77.48	-	-	-
94%	ESSILORLUXOTTICA	ESLX.PA	132.85	+	+	+
83%	ESSITY B	ESSITYb.ST	293.60	+	+	+
67%	FABEGE	FABG.ST	161.40	+	+	+
100%	FASTIGHETS BALDER B	BALDb.ST	354.40	+	+	+
83%	FERRARI (MIL)	RACE.MI	144.95	+	uu+	u+
28%	FIAT CHRYSLER AUTOS.	FCHA.MI	11.60	o	-	u+
33%	FRESENIUS (XET)	FREG.DE	43.96	-	uo	+
22%	FRESENIUS MED.CARE (XET)	FMEG.DE	60.30	uo	-	+
100%	GENMAB	GEN.CO	1'372.50	+	+	+
28%	GETINGE B	GETIb.ST	135.05	+	-	uo
83%	GJENSIDIGE FORSIKRING	GJFS.OL	174.85	+	uu+	+
89%	GLAXOSMITHKLINE	GSK.L	1'687.20	+	+	uu+
6%	GLENORE	GLEN.L	223.80	-	d-	o
0%	GN STORE NORD	GN.CO	288.20	-	-	-
22%	HEIDELBERGCEMENT (XET)	HEIG.DE	60.80	o	-	+
39%	HEINEKEN	HEIN.AS	94.88	+	-	+
22%	HEINEKEN HOLDING	HEIO.AS	88.55	o	-	o
83%	HENKEL PREF. (XET)	HNKG.DE	88.76	u+	u+	uu+
39%	HERMES INTL.	HRMS.PA	618.00	+	-	u+
6%	HEXAGON B	HEXAb.ST	438.20	-	-	o
11%	HEXPOL B	HPOLb.ST	69.50	-	d-	u+
6%	HSBC HOLDINGS	HSBA.L	580.90	-	-	uo
17%	HUSQVARNA B	HUSQb.ST	74.36	o	-	uo
94%	IBERDROLA	IBE.MC	9.30	+	+	+
100%	ICA GRUPPEN	ICAA.ST	484.40	+	+	+
39%	IMPERIAL BRANDS	IMB.L	2'061.50	d-	+	do
100%	INDITEX	ITX.MC	27.16	+	+	+
17%	INDUSTRIVARDEN A	INDUa.ST	202.00	o	-	o
22%	INFINEON TECHS. (XET)	IFXGn.DE	15.22	-	o	o



# STOXX 200 stocks – listed alphabetically (ING-Z)

SCORE	COMPANY	RIC	PRICE	LT	MT	ST
61%	ING GROEP	INGA.AS	9.33	uo	uu+	u+
89%	INNOGY (XET)	IGY.DE	44.90	+	+	do
100%	INTESA SANPAOLO	ISP.MI	2.10	u+	+	+
100%	INVESTOR B	INVEb.ST	461.00	+	uu+	+
33%	ISS	ISS.CO	171.45	-	uo	u+
50%	JYSKE BANK	JYSK.CO	205.30	-	uu+	u+
89%	KBC GROUP	KBC.BR	57.44	uu+	uu+	u+
17%	KERING	PRTP.PA	449.20	-	-	u+
17%	KGHM	KGH.WA	80.42	-	-	u+
33%	KINDRED GROUP SDR	KINDsdb.ST	55.60	-	uo	+
94%	KINNEVIK B	KINVB.ST	276.00	+	+	+
100%	KONE 'B'	KNEBV.HE	54.68	+	uu+	u+
89%	KONINKLIJKE AHOLD DELHA	AD.AS	21.70	u+	+	+
28%	LINDE (XET)	LINI.DE	168.75	o	-	o
28%	LLOYDS BANKING GROUP	LLOY.L	50.18	-	uo	do
100%	LOOMIS B	LOOMB.ST	329.20	+	+	u+
78%	L'OREAL	OREP.PA	249.30	+	u+	+
50%	DEUTSCHE LUFTHANSA (XET)	LHAG.DE	14.09	-	u+	+
89%	LUNDIN PETROLEUM	LUPE.ST	306.20	uu+	u+	u+
83%	LVMH	LVMH.PA	378.95	+	uu+	+
78%	MICHELIN	MICP.PA	102.75	o	uu+	u+
78%	MERCK KGAA (XET)	MRCG.DE	95.84	+	+	do
100%	MUENCHENER RUCK. (XET)	MUVGn.DE	226.80	+	uu+	+
0%	NATIONAL GRID	NG.L	820.00	dd-	dd-	dd-
0%	NATURGY ENERGY	NTGY.MC	22.83	-	dd-	dd-
6%	NESTE	NESTE.HE	28.39	-	-	uo
11%	NIBE INDUSTRIER B	NIBEb.ST	121.95	-	-	uu+
28%	NOKIA	NOKIA.HE	4.53	-	o	uu+
78%	NORDEA BANK (OME)	NDASE.ST	67.36	uo	uu+	+
89%	NORSK HYDRO	NHY.OL	31.87	uu+	uu+	+
83%	NOVO NORDISK 'B'	NOVOb.CO	342.15	+	+	dd-
33%	NOVOZYMES B	NZYMb.CO	291.40	-	uo	u+
17%	ORANGE	ORAN.PA	13.46	-	do	dd-
67%	ORKLA	ORK.OL	80.62	+	+	dd-
67%	ORSTED	ORSTED.CO	651.00	+	+	dd-
94%	PANDORA	PNDORA.CO	306.20	+	+	+
89%	PERNOD-RICARD	PERP.PA	168.65	+	+	do
89%	PEUGEOT	PEUP.PA	22.87	uu+	uu+	+
89%	PHILIPS ELTN.KONINKLIJKE	PHG.AS	42.14	+	+	do
83%	PKO BANK	PKO.WA	41.17	uu+	uu+	u+
17%	PLKNC.NAFTOWY ORLEN	PKN.WA	91.20	-	-	u+
17%	POLISH OIL AND GAS	PGN.WA	4.81	-	-	u+
17%	PRUDENTIAL	PRU.L	1'439.50	-	-	u+
17%	PZU GROUP	PZU.WA	37.80	-	-	u+
33%	RECKITT BENCKISER GROUP	RB.L	6'316.00	o	uo	do
33%	RELX	REL.L	1'915.50	+	dd-	dd-
78%	REPSOL YPF	REP.MC	13.88	uo	uu+	u+
33%	RIO TINTO	RIO.L	4'218.50	-	uo	u+
33%	ROYAL BANK OF SCTL.GP.	RBS.L	192.80	-	uo	u+
17%	ROYAL DUTCH SHELL A	RDSa.AS	25.42	-	-	u+

SCORE	COMPANY	RIC	PRICE	LT	MT	ST
100%	RWE (XET)	RWEG.DE	26.24	+	+	+
50%	SAAB B	SAABb.ST	287.70	-	uu+	uu+
100%	SAFRAN	SAF.PA	142.45	+	uu+	+
22%	SALMAR	SALM.OL	413.00	do	dd-	dd-
44%	SAMPO 'A'	SAMPO.HE	37.76	uo	uo	uu+
50%	SANDVIK	SAND.ST	146.45	-	uu+	+
83%	SANOFI	SASY.PA	79.26	+	+	do
17%	SANTANDER BANK POLSKA	SPL1.WA	305.00	-	-	+
56%	SAP (XET)	SAPG.DE	110.20	do	uo	+
78%	SCHIBSTED A	SBSTA.OL	263.40	+	+	do
100%	SCHNEIDER ELECTRIC	SCHN.PA	78.02	+	uu+	+
33%	SECURITAS B	SECUB.ST	148.70	-	uo	+
33%	SIEMENS (XET)	SIEGn.DE	94.19	-	uo	+
17%	SIEMENS (XET) HEALTHINEER	SHLG.DE	35.85	-	-	u+
83%	SIMCORP	SIM.CO	629.50	o	+	+
78%	SKANDINAVISKA ENSKILDA B	SEBa.ST	88.20	uo	uu+	u+
100%	SKANSKA B	SKAb.ST	189.45	+	+	+
100%	SKF B	SKFb.ST	164.35	u+	uu+	+
100%	SOCIETE GENERALE	SOGN.PA	25.14	u+	+	+
44%	STANDARD CHARTERED	STAN.L	659.20	o	uo	u+
33%	STOREBRAND	STB.OL	54.60	-	uo	u+
78%	SUBSEA 7	SUBC.OL	93.32	uo	uu+	+
100%	SVENSKA CELLULOZA AKTIEB	SCAb.ST	87.68	+	+	+
67%	SVENSKA HANDELSBANKEN A	SHBa.ST	90.16	-	uu+	u+
78%	SWEDBANK A	SWEDa.ST	136.05	uo	uu+	u+
67%	SWEDISH MATCH	SWMA.ST	407.30	-	uu+	+
0%	SWEDISH ORPHAN BIOVITRU	SOBIV.ST	155.00	-	-	-
50%	TELE2 B	TEL2b.ST	138.70	+	do	d-
50%	TELEFONICA	TEF.MC	6.66	-	uu+	+
11%	TELENOR	TEL.OL	176.25	do	dd-	dd-
89%	TELIA COMPANY	TELIA.ST	42.67	+	uu+	+
78%	TESCO	TSCO.L	230.60	uo	uu+	u+
89%	TGS-NOPEC GEOPHS.	TGS.OL	230.70	uu+	uu+	+
89%	THALES	TCFP.PA	109.45	+	+	+
100%	THYSSENKRUPP (XET)	TKAG.DE	12.35	uu+	uu+	+
50%	TOTAL	TOTF.PA	46.33	-	uu+	+
100%	TRELLEBORG B	TRELB.ST	141.10	u+	u+	+
56%	TRYG	TRYG.CO	205.60	u+	uo	u+
17%	WFD UNIBAIL RODAMCO STA	URW.AS	127.00	-	o	dd-
67%	UNILEVER (UK)	ULVR.L	5'063.00	+	do	dd-
89%	UNILEVER	UNA.AS	55.48	+	+	do
17%	VESTAS WINDSYSTEMS	VWS.CO	524.00	-	-	+
89%	VINCI	SGEF.PA	97.88	+	+	do
56%	VIVENDI	VIV.PA	25.08	do	do	d-
100%	VODAFONE GROUP	VOD.L	155.52	+	+	+
100%	VOLKSWAGEN PREF. (XET)	VOWG_p.DE	154.08	u+	u+	+
89%	VOLVO B	VOLVb.ST	140.00	u+	uu+	u+
0%	VONOVIA (XET)	VNAn.DE	42.20	-	-	d-
72%	WIRECARD (XET)	WDIG.DE	156.90	u+	uu+	+
83%	YARA INTERNATIONAL	YAR.OL	401.20	u+	uu+	+

# Eurostoxx 50 constituent stocks - listed to Score (left) and alphabetically (right)

100%	ASML HOLDING
100%	BNP PARIBAS
100%	CRH (DUB)
100%	DEUTSCHE POST (XET)
100%	INDITEX
100%	INTESA SANPAOLO
100%	MUENCHENER RUCK. (XET)
100%	SAFRAN
100%	SCHNEIDER ELECTRIC
100%	SOCIETE GENERALE
100%	VOLKSWAGEN PREF. (XET)
94%	BAYER (XET)
89%	BASF (XET)
89%	ESSILORLUXOTTICA
89%	KONINKLIJKE AHOLD DELHA
89%	PHILIPS ELTN.KONINKLIJKE
89%	UNILEVER
89%	VINCI
83%	ANHEUSER-BUSCH INBEV
83%	ADIDAS (XET)
83%	AIRBUS
83%	LVMH
83%	SANOFI
78%	DAIMLER (XET)
78%	ENEL
78%	L'OREAL
67%	ALLIANZ (XET)
67%	DANONE
67%	IBERDROLA
61%	BBV.ARGENTARIA
61%	ING GROEP
56%	SAP (XET)
56%	VIVENDI
50%	AIR LIQUIDE
50%	BMW (XET)
50%	ENI
50%	FRESENIUS (XET)
50%	TELEFONICA
50%	TOTAL
44%	AXA
44%	DEUTSCHE TELEKOM (XET)
44%	BANCO SANTANDER
33%	SIEMENS (XET)
28%	LINDE (XET)
28%	NOKIA
17%	AMADEUS IT GROUP
17%	KERING
17%	ORANGE
17%	WFD UNIBAIL RODAMCO STA
11%	ENGIE

SCORE	COMPANY	RIC	PRICE	LT	MT	ST	COMMENT	DATE BOUGHT	PRICE BOUGHT	PROFIT or LOSS
83%	ANHEUSER-BUSCH INBEV	ABI.BR	86.06	+	+	u+				
83%	ADIDAS (XET)	ADSGn.DE	277.05	+	uu+	+	Sell signals if 262, 252 and 235 are broken.			
83%	AIRBUS	AIR.PA	126.84	+	uo	u+	Sell signals if the supports at 118 and 112 are broken.			
50%	AIR LIQUIDE	AIRP.PA	123.55	+	do	dd-	Hold.	29.08.2019	124.30	-0.60%
67%	ALLIANZ (XET)	ALVG.DE	206.65	u+	uo	u+	Must rise above 1211 to signal 220 or 235.			
17%	AMADEUS IT GROUP	AMA.MC	67.46	-	-	u+				
100%	ASML HOLDING	ASML.AS	219.15	+	+	+				
44%	AXA	AXAF.PA	21.97	o	uo	u+				
89%	BASF (XET)	BASFn.DE	62.28	u+	u+	+				
94%	BAYER (XET)	BAYGn.DE	67.26	+	+	do	Long-term resistance is at 71 / 72 and 77 to 82.			
61%	BBV.ARGENTARIA	BBVA.MC	4.60	uo	uu+	+				
50%	BMW (XET)	BMWG.DE	63.22	-	u+	u+	BUY only if the resistance at 65 is broken. Next target is 67 or 72.			
100%	BNP PARIBAS	BNPP.PA	43.71	u+	u+	+	BUY only if the resistance at 45 is broken. Next target is 46, 47.50 or 50.			
100%	CRH (DUB)	CRH.I	30.52	+	+	+				
78%	DAIMLER (XET)	DAIGn.DE	46.45	uo	uu+	u+	Must rise above 48 / 48.50 to signal 52.50 or 56.50.			
67%	DANONE	DANO.PA	80.00	+	+	dd-	Topped at target level 81 / 82. Sell signals if the supports at 77, 76.20, 74.80 are broken.			
100%	DEUTSCHE POST (XET)	DPWGn.DE	30.47	+	+	+				
44%	DEUTSCHE TELEKOM (XET)	DTEGn.DE	15.03	-	o	do				
78%	ENEL	ENEL.MI	6.55	+	+	do	Stop 6.25.	29.08.2019	6.5550	-0.15%
11%	ENGIE	ENGIE.PA	13.39	do	dd-	dd-	Sell signals if 13.20 and 12.70 is broken.			
50%	ENI	ENI.MI	13.92	-	u+	+				
89%	ESSILORLUXOTTICA	ESLX.PA	132.45	+	+	do	Turning down from long-term resistance 132 / 135.			
50%	FRESENIUS (XET)	FREG.DE	44.20	uo	u+	do				
67%	IBERDROLA	IBE.MC	9.23	+	+	dd-	Turning down from long-term resistance and target at 9.50.			
100%	INDITEX	ITX.MC	28.79	+	+	+				
61%	ING GROEP	INGA.AS	9.33	uo	uu+	u+	BUY signal only if 9.80 is broken. Next target 10.70.			
100%	INTESA SANPAOLO	ISP.MI	2.10	u+	+	+	Add to the position. Next resistance is 2.20 / 2.25.	29.08.2019	1.9820	6.03%
17%	KERING	PRTP.PA	449.20	-	-	u+				
89%	KONINKLIJKE AHOLD DELHA	AD.AS	21.70	u+	+	+				
28%	LINDE (XET)	LINI.DE	168.75	o	-	o				
78%	L'OREAL	OREP.PA	249.30	+	u+	+	Sell signals if 242 and 235 are broken.			
83%	LVMH	LVMH.PA	378.95	+	uu+	+	Sell signal if the support at 345 is broken. Lower support is 328.			
100%	MUENCHENER RUCK. (XET)	MUVGn.DE	226.80	+	uu+	+	Must rise above 231 to signal 236 or 245 / 248.			
28%	NOKIA	NOKIA.HE	4.53	-	o	uu+				
17%	ORANGE	ORAN.PA	13.46	-	do	dd-				
89%	PHILIPS ELTN.KONINKLIJKE	PHG.AS	42.14	+	+	do	Sell signal if 41 is broken. Support is 40 and 38.	29.08.2019	42.80	-1.54%
100%	SAFRAN	SAF.PA	142.45	+	uu+	+				
83%	SANOFI	SASY.PA	79.26	+	+	do				
44%	BANCO SANTANDER	SAN.MC	3.62	uo	uo	u+	Must rise above 3.77 to signal 3.95 / 4.00 or 4.35.			
56%	SAP (XET)	SAPG.DE	110.20	do	uo	+				
100%	SCHNEIDER ELECTRIC	SCHN.PA	78.02	+	uu+	+	Buy only if the resistance at 80.50 is broken.			
33%	SIEMENS (XET)	SIEGn.DE	94.19	-	uo	+	Add to the position if 100 is broken.	29.08.2019	90.00	4.66%
100%	SOCIETE GENERALE	SOGN.PA	25.14	u+	+	+	BUY and add >26.50. A break of 26.50 would signal 28.50 / 30.	10.09.2019	25.55	
50%	TELEFONICA	TEF.MC	6.66	-	uu+	+	Hold.	28.08.2019	6.18	7.85%
50%	TOTAL	TOTF.PA	46.33	-	uu+	+				
17%	WFD UNIBAIL RODAMCO STA	URW.AS	127.00	-	o	dd-				
89%	UNILEVER	UNA.AS	55.48	+	+	do	Sell signals if 54.50 and 53 is broken.			
89%	VINCI	SGEF.PA	97.88	+	+	do	Sell signals if 96 and 93 is broken.			
56%	VIVENDI	VIV.PA	25.08	do	do	d-				
100%	VOLKSWAGEN PREF. (XET)	VOWG_p.DE	154.08	u+	u+	+	BUY signal if 158 is broken. Could rise to 170 or 190.			

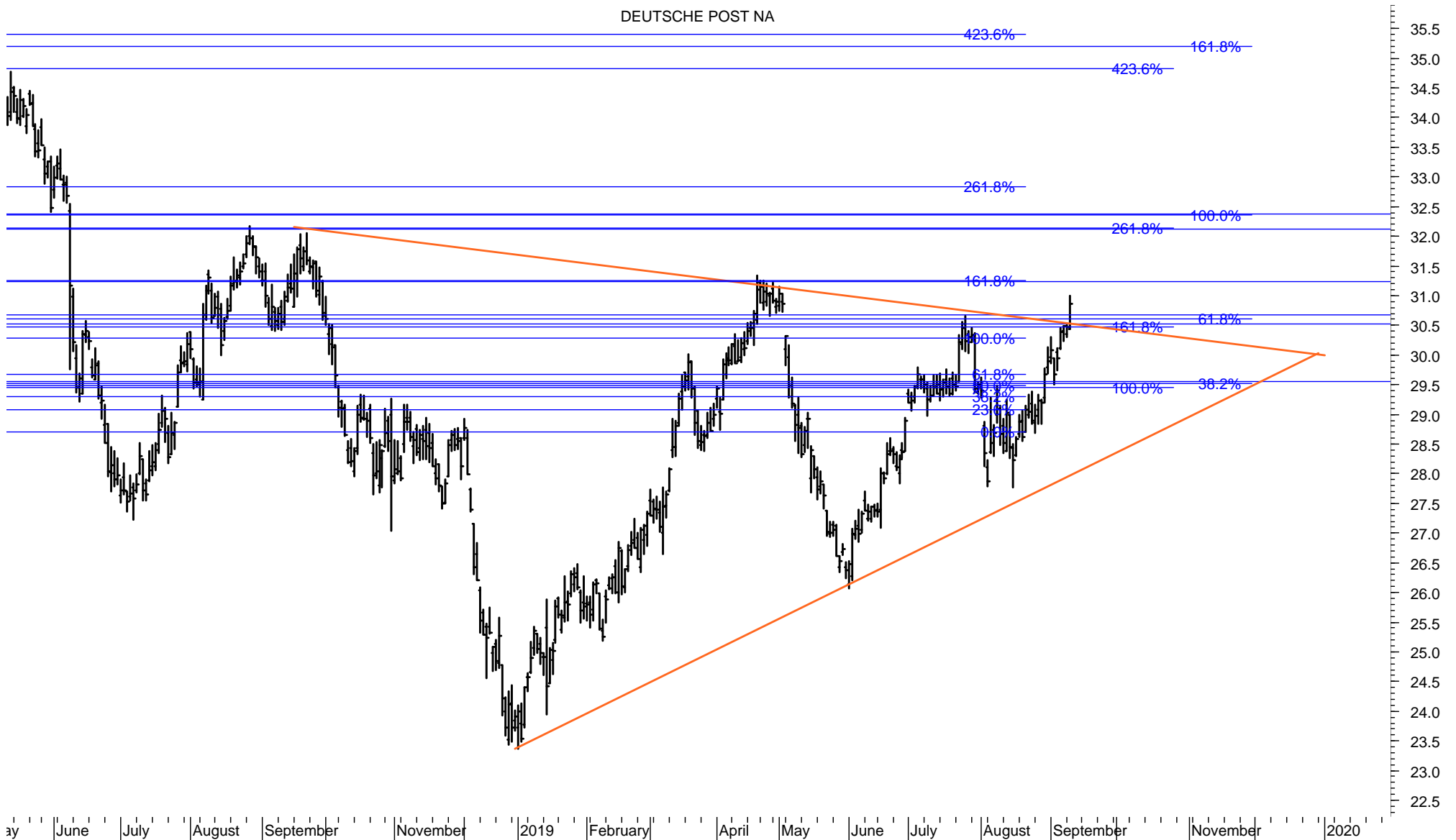
# BANCO SANTANDER – monthly chart

Bank stocks have enjoyed a strong rally over the past two weeks.  
Interestingly enough, for Santander, the rally originated exactly at the breakdown support 3.40 / 3.30.



# DEUTSCHE POST – daily chart

Deutsche Post broke out of the TRIANGLE with the break of 29.60.  
It must rise above 31.30 to signal 32 / 32.50 or 35.



# S&P 200 stocks – listed according to the Score (range from 100% to 0%, 40%-60% is neutral)

100%	ACTIVISION BLIZZARD	ATVI.O
100%	ALLERGAN	AGN
100%	ALPHABET 'C'	GOOG.O
100%	ANALOG DEVICES	ADI.O
100%	APPLE	AAPL.O
100%	APPLIED MATS.	AMAT.O
100%	AT&T	T
100%	BB&T	BBT
100%	BOOKING HOLDINGS	BKNG.O
100%	BROADCOM	AVGO.O
100%	CHARTER COMMS.CL.A	CHTR.O
100%	CHUBB	CB
100%	CITIGROUP	C
100%	COMCAST A	CMCSA.O
100%	COSTCO WHOLESALE	COST.O
100%	CVS HEALTH	CVS
100%	DOLLAR GENERAL	DG
100%	DOVER	DOV
100%	EATON	ETN
100%	EBAY	EBAY.O
100%	ELECTRONIC ARTS	EA.O
100%	GENERAL MILLS	GIS
100%	GENERAL MOTORS	GM
100%	GILEAD SCIENCES	GILD.O
100%	GOLDMAN SACHS GP.	GS
100%	ILLINOIS TOOL WORKS	ITW
100%	INTEL	INTC.O
100%	INTERNATIONAL BUS.M	IBM
100%	JP MORGAN CHASE & C	JPM
100%	LAM RESEARCH	LRCX.O
100%	MASTERCARD	MA
100%	MICRON TECHNOLOGY	MU.O
100%	MOODY'S	MCO
100%	NVIDIA	NVDA.O
100%	ONEOK	OKE
100%	PHILLIPS 66	PSX
100%	PNC FINL.SVS.GP.	PNC
100%	PROCTER & GAMBLE	PG
100%	RAYTHEON 'B'	RTN
100%	REGENCY CENTERS	REG.O
100%	SOUTHWEST AIRLINES	LUV
100%	SYSCO	SY
100%	TE CONNECTIVITY	TEL
100%	TEXAS INSTRUMENTS	TXN.O
100%	UNITED PARCEL SER.'B'	UPS
100%	UNITED TECHNOLOGIE	UTX
100%	US BANCORP	USB
100%	WELLS FARGO & CO	WFC
94%	BAXTER INTL.	BAX
94%	BRISTOL MYERS SQUIB	BMY

94%	CELGENE	CEL.G.O
94%	CONSTELLATION BRAN	STZ
94%	DUKE ENERGY	DUK
94%	ESTEE LAUDER COS.'A'	EL
94%	HOME DEPOT	HD
94%	LOWE'S COMPANIES	LOW
94%	PEPSICO	PEP.O
94%	PUB.SER.ENTER.GP.	PEG
94%	QUALCOMM	QCOM.O
94%	S&P GLOBAL	SPGI.K
94%	TARGET	TGT
94%	ZOETIS	ZTS
89%	BANK OF AMERICA	BAC
89%	BANK OF NEW YORK M	BK
89%	BERKSHIRE HATHAWAY	BRKb
89%	CATERPILLAR	CAT
89%	CHARLES SCHWAB	SCHW.K
89%	COGNIZANT TECH.SLT	CTSH.O
89%	FEDEX	FDX
89%	FISERV	FISV.O
89%	GENERAL DYNAMICS	GD
89%	LYONDELLBASELL IND	LYB
89%	MORGAN STANLEY	MS
89%	NIKE 'B'	NKE
89%	O REILLY AUTOMOTIVE	ORLY.O
89%	ROSS STORES	ROST.O
89%	TJX	TJX
89%	V F	VFC
89%	VERIZON COMMUNICA	VZ
89%	WALGREENS BOOTS AL	WBA.O
83%	ALLSTATE ORD SHS	ALL
83%	AMER.ELEC.PWR.	AEP
83%	AMERICAN INTL.GP.	AIG
83%	AMGEN	AMGN.O
83%	BECTON DICKINSON	BDX
83%	EDWARDS LIFESCIENCE	EW
83%	FACEBOOK CLASS A	FB.O
83%	JOHNSON CONTROLS I	JCI
83%	MARSH & MCLENNAN	MMC
83%	MICROSOFT	MSFT.O
83%	MONDELEZ INTERNATI	MDLZ.O
83%	PROLOGIS	PLD
83%	SHERWIN-WILLIAMS	SHW
83%	SOUTHERN	SO
83%	VISA 'A'	V
83%	WALMART	WMT
83%	YUM! BRANDS	YUM
78%	AON CLASS A	AON
78%	EMERSON ELECTRIC	EMR
78%	EXELON	EXC

78%	MARATHON PETROLEU	MPC
78%	MEDTRONIC	MDT
78%	WELLTOWER	WELL.K
72%	AUTOMATIC DATA PRO	ADP.O
72%	CME GROUP	CME.O
72%	COCA COLA	KO
72%	COLGATE-PALM.	CL
72%	HONEYWELL INTL.	HON
72%	MCDONALDS	MCD
72%	SEMPRA EN.	SRE
67%	ACCENTURE CLASS A	ACN
67%	AMERICAN TOWER	AMT
67%	BOEING	BA
67%	CROWN CASTLE INTL.	CCI
67%	DEERE	DE
67%	DELTA AIR LINES	DAL
67%	EQUINIX REIT	EQIX.O
67%	INTERCONTINENTAL EX	ICE
67%	LOCKHEED MARTIN	LMT
67%	NEXTERA ENERGY	NEE
67%	SIMON PROPERTY GRO	SPG
67%	STRYKER	SYK
67%	TRANSOCEAN	RIG
67%	TRAVELERS COS.	TRV
67%	WALT DISNEY	DIS
61%	SCHLUMBERGER	SLB
56%	CIGNA	CI
56%	FORD MOTOR	F
56%	KINDER MORGAN	KMI
56%	ORACLE	ORCL.K
50%	3M	MMM
50%	AMAZON.COM	AMZN.O
50%	AMPHENOL 'A'	APH
50%	AUTODESK	ADSK.O
50%	CAMECO (NYS)	CCJ
50%	CONOCOPHILLIPS	COP
50%	CSX	CSX.O
50%	DOMINION ENERGY	D
50%	EOG RES.	EOG
50%	EXXON MOBIL	XOM
50%	FIDELITY NAT.INFO.SV	FIS
50%	KRAFT HEINZ	KHC.O
50%	NORTHROP GRUMMAN	NOC
50%	PUBLIC STORAGE	PSA
50%	STARBUCKS	SBUX.O
50%	VALERO ENERGY	VLO
50%	WASTE MANAGEMENT	WM
44%	ABBVIE	ABBV.K
44%	METLIFE	MET
39%	DANAHER	DHR

39%	INTUIT	INTU.O
33%	AMERICAN EXPRESS	AXP
33%	DOW CHEMICAL	DOW
33%	ECOLAB	ECL
33%	HCA HEALTHCARE	HCA
33%	OCCIDENTAL PTL.	OXY
33%	PFIZER	PFE
33%	UNION PACIFIC	UNP
33%	WILLIAMS	WMB
33%	XILINX	XLNX.O
28%	ABBOTT LABORATORIE	ABT
28%	AFLAC	AFL
28%	ALLIANCE DATA SYSTE	ADS
28%	BLACKROCK	BLK
28%	CHEVRON	CVX
28%	GENERAL ELECTRIC	GE
28%	HUMANA	HUM
28%	MARRIOTT INTL.'A'	MAR.O
22%	AIR PRDS.& CHEMS.	APD
22%	BOSTON SCIENTIFIC	BSX
22%	ELI LILLY	LLY
22%	INTUITIVE SURGICAL	ISRG.O
22%	IQVIA HOLDINGS	IQV
22%	KIMBERLY-CLARK	KMB
22%	MERCK & COMPANY	MRK
22%	PAYCHEX	PAYX.O
22%	ROPER TECHNOLOGIES	ROP
22%	SALESFORCE.COM	CRM
17%	ADVANCED MICRO DEV	AMD.O
17%	BIAGEN	BIIB.O
17%	CISCO SYSTEMS	CSCO.O
17%	HP	HPQ
17%	LINDE	LIN
17%	NORFOLK SOUTHERN	NSC
17%	PROGRESSIVE OHIO	PGR
17%	PRUDENTIAL FINL.	PRU
17%	REGENERON PHARMS.	REGN.O
11%	NETFLIX	NFLX.O
11%	UNITEDHEALTH GROU	UNH
6%	ANTHEM	ANTM.K
6%	JOHNSON & JOHNSON	JNJ
6%	MONSTER BEVERAGE	MNST.O
6%	PHILIP MORRIS INTL.	PM
0%	ADOBE (NAS)	ADBE.O
0%	ALEXION PHARMS.	ALXN.O
0%	ALTRIA GROUP	MO
0%	FORTIVE	FTV
0%	ILLUMINA	ILMN.O
0%	PAYPAL HOLDINGS	PYPL.O
0%	VERTEX PHARMS.	VRTX.O

## S&P 200 stocks – listed alphabetically (A-HP)

SCORE	COMPANY	RIC	PRICE	LT	MT	ST
50%	3M	MMM	165.94	-	u+	u+
28%	ABBOTT LABORATORIES	ABT	84.22	+	-	o
44%	ABBVIE	ABBV.K	66.70	-	uo	do
67%	ACCENTURE CLASS A	ACN	194.83	+	do	dd-
100%	ACTIVISION BLIZZARD	ATVI.O	55.19	+	+	+
0%	ADOBE (NAS)	ADBE.O	279.30	dd-	-	dd-
17%	ADVANCED MICRO DEVS	AMD.O	30.50	o	-	uo
28%	AFLAC	AFL	51.08	uo	-	uu+
22%	AIR PRDS.& CHEMS.	APD	216.36	+	-	d-
0%	ALEXION PHARMS.	ALXN.O	106.40	-	-	d-
100%	ALLERGAN	AGN	162.37	+	+	+
28%	ALLIANCE DATA SYSTE	ADS	129.03	-	uo	uu+
83%	ALLSTATE ORD SHS	ALL	105.79	+	uu+	uu+
100%	ALPHABET 'C'	GOOG.O	1'204.41	+	+	u+
0%	ALTRIA GROUP	MO	44.04	-	-	d-
50%	AMAZON.COM	AMZN.O	1'831.35	-	uo	u+
83%	AMER.ELEC.PWR.	AEP	91.38	+	+	+
33%	AMERICAN EXPRESS	AXP	119.92	do	-	uu+
83%	AMERICAN INTL.GP.	AIG	55.41	+	uu+	uu+
67%	AMERICAN TOWER	AMT	224.00	+	+	dd-
83%	AMGEN	AMGN.O	202.34	+	+	dd-
50%	AMPHENOL 'A'	APH	88.97	-	uu+	u+
100%	ANALOG DEVICES	ADI.O	112.87	u+	u+	u+
6%	ANTHEM	ANTM.K	250.45	-	-	uo
78%	AON CLASS A	AON	193.43	+	uo	do
100%	APPLE	AAPL.O	214.17	+	+	u+
100%	APPLIED MATS.	AMAT.O	50.66	+	uu+	u+
100%	AT&T	T	36.79	+	+	u+
50%	AUTODESK	ADSK.O	151.02	-	uo	+
72%	AUTOMATIC DATA PRO	ADP.O	168.05	+	+	d-
89%	BANK OF AMERICA	BAC	28.63	uu+	uu+	u+
89%	BANK OF NEW YORK M	BK	45.48	uu+	uu+	u+
94%	BAXTER INTL.	BAX	87.20	+	+	o
100%	BB&T	BBT	50.36	u+	uu+	u+
83%	BECTON DICKINSON	BDX	257.80	+	+	+
89%	BERKSHIRE HATHAWAY	BRKb	206.62	uo	uu+	u+
17%	BIAGEN	BIIB.O	230.00	-	-	uu+
28%	BLACKROCK	BLK	430.85	o	-	u+
67%	BOEING	BA	358.78	o	+	do
100%	BOOKING HOLDINGS	BKNG.O	1'992.25	+	+	+
22%	BOSTON SCIENTIFIC	BSX	41.74	+	d-	d-
94%	BRISTOL MYERS SQUIB	BMJ	48.09	+	+	do
100%	BROADCOM	AVGO.O	292.61	u+	u+	u+
50%	CAMECO (NYS)	CCJ	9.10	-	uu+	u+
89%	CATERPILLAR	CAT	127.25	uu+	uu+	u+
94%	CELGENE	CELG.O	97.07	+	+	do
89%	CHARLES SCHWAB	SCHW.K	41.10	uo	uu+	u+
100%	CHARTER COMMS.CL.A	CHTR.O	419.78	+	+	+
28%	CHEVRON	CVX	119.39	uo	-	u+
100%	CHUBB	CB	160.26	+	+	u+

SCORE	COMPANY	RIC	PRICE	LT	MT	ST
56%	CIGNA	CI	162.16	uo	uo	uu+
17%	CISCO SYSTEMS	CSCO.O	48.58	-	-	u+
100%	CITIGROUP	C	68.79	uu+	uu+	u+
72%	CME GROUP	CME.O	215.58	+	+	do
72%	COCA COLA	KO	54.52	+	+	do
89%	COGNIZANT TECH.SLT	CTSH.O	64.18	uu+	u+	u+
72%	COLGATE-PALM.	CL	73.19	+	do	do
100%	COMCAST A	CMCSA.O	46.42	+	+	+
50%	CONOCOPHILLIPS	COP	54.97	-	uo	u+
94%	CONSTELLATION BRAN	STZ	206.75	+	+	+
100%	COSTCO WHOLESALE	COST.O	299.00	+	+	+
67%	CROWN CASTLE INTL.	CCI	143.48	+	+	dd-
50%	CSX	CSX.O	69.05	-	uu+	u+
100%	CVS HEALTH	CVS	63.68	+	+	u+
39%	DANAHER	DHR	139.36	+	-	o
67%	DEERE	DE	158.36	u+	o	+
67%	DELTA AIR LINES	DAL	58.11	+	uo	u+
100%	DOLLAR GENERAL	DG	160.76	+	+	+
50%	DOMINION ENERGY	D	76.67	+	do	dd-
100%	DOVER	DOV	95.53	uu+	uu+	u+
33%	DOW CHEMICAL	DOW	44.45	-	uo	uu+
94%	DUKE ENERGY	DUK	93.72	+	+	do
100%	EATON	ETN	84.85	u+	uu+	u+
100%	EBAY	EBAY.O	41.40	+	uu+	uu+
33%	ECOLAB	ECL	200.78	+	dd-	d-
83%	EDWARDS LIFESCIENCE	EW	217.21	+	+	-
100%	ELECTRONIC ARTS	EA.O	98.68	+	+	+
22%	ELI LILLY	LLY	111.07	-	do	uo
78%	EMERSON ELECTRIC	EMR	63.78	uo	uu+	u+
50%	EOG RES.	EOG	80.00	-	uu+	u+
67%	EQUINIX REIT	EQIX.O	538.21	+	+	dd-
94%	ESTEE LAUDER COS.'A'	EL	205.40	+	+	+
78%	EXELON	EXC	48.03	uo	u+	+
50%	EXXON MOBIL	XOM	71.49	-	uu+	u+
83%	FACEBOOK CLASS A	FB.O	188.76	+	uo	u+
89%	FEDEX	FDX	167.42	uu+	u+	u+
50%	FIDELITY NAT.INFO.SV	FIS	133.84	+	do	dd-
89%	FISERV	FISV.O	106.68	+	+	do
56%	FORD MOTOR	F	9.54	u+	uo	uu+
0%	FORTIVE	FTV	68.01	-	-	d-
89%	GENERAL DYNAMICS	GD	188.07	+	+	o
28%	GENERAL ELECTRIC	GE	8.96	uo	-	u+
100%	GENERAL MILLS	GIS	55.59	+	uu+	uu+
100%	GENERAL MOTORS	GM	39.58	u+	uu+	uu+
100%	GILEAD SCIENCES	GILD.O	66.33	uu+	uu+	u+
100%	GOLDMAN SACHS GP.	GS	211.98	u+	uu+	u+
33%	HCA HEALTHCARE	HCA	127.51	-	uo	uu+
94%	HOME DEPOT	HD	232.87	+	+	+
72%	HONEYWELL INTL.	HON	169.66	uu+	uu+	uu+
17%	HP	HPQ	19.01	-	-	u+



# S&P 200 stocks – listed alphabetically (Humana-Z)

SCORE	COMPANY	RIC	PRICE	LT	MT	ST
28%	HUMANA	HUM	275.69	do	-	uo
100%	ILLINOIS TOOL WORKS	ITW	153.71	u+	uu+	uu+
0%	ILLUMINA	ILMN.O	266.84	-	-	d-
100%	INTEL	INTC.O	51.59	uu+	u+	u+
67%	INTERCONTINENTAL EX	ICE	92.18	+	+	dd-
100%	INTERNATIONAL BUS.M	IBM	142.60	u+	uu+	u+
39%	INTUIT	INTU.O	275.90	+	do	dd-
22%	INTUITIVE SURGICAL	ISRG.O	496.69	-	o	o
22%	IQVIA HOLDINGS	IQV	151.87	+	-	d-
6%	JOHNSON & JOHNSON	JNJ	126.95	-	-	uo
83%	JOHNSON CONTROLS I	JCI	42.89	+	+	uu+
100%	JP MORGAN CHASE & C	JPM	115.40	uu+	uu+	u+
22%	KIMBERLY-CLARK	KMB	133.27	+	dd-	dd-
56%	KINDER MORGAN	KMI	20.41	o	uo	u+
50%	KRAFT HEINZ	KHC.O	28.08	-	uu+	u+
100%	LAM RESEARCH	LRCX.O	230.34	+	+	u+
17%	LINDE	LIN	185.21	uo	-	uo
67%	LOCKHEED MARTIN	LMT	380.21	+	+	dd-
94%	LOWE'S COMPANIES	LOW	114.79	+	+	+
89%	LYONDELLBASELL IND	LYB	81.46	uo	uu+	u+
78%	MARATHON PETROLEU	MPC	53.58	uo	uu+	u+
28%	MARRIOTT INTL.'A'	MAR.O	129.91	o	-	u+
83%	MARSH & MCLENNAN	MMC	99.87	+	uo	u+
100%	MASTERCARD	MA	283.36	+	+	+
72%	MCDONALDS	MCD	217.26	+	+	uo
78%	MEDTRONIC	MDT	107.93	+	+	do
22%	MERCK & COMPANY	MRK	83.47	do	dd-	dd-
44%	METLIFE	MET	46.40	o	uo	u+
100%	MICRON TECHNOLOGY	MU.O	49.13	+	+	u+
83%	MICROSOFT	MSFT.O	137.52	+	uo	u+
83%	MONDELEZ INTERNATI	MDLZ.O	56.48	+	u+	+
6%	MONSTER BEVERAGE	MNST.O	57.23	d-	-	o
100%	MOODY'S	MCO	217.37	+	+	u+
89%	MORGAN STANLEY	MS	43.11	u+	uu+	u+
11%	NETFLIX	NFLX.O	294.34	-	-	u+
67%	NEXTERA ENERGY	NEE	219.89	+	+	dd-
89%	NIKE 'B'	NKE	88.67	uu+	uu+	+
17%	NORFOLK SOUTHERN	NSC	177.32	-	-	u+
50%	NORTHROP GRUMMAN	NOC	355.83	+	do	d-
100%	NVIDIA	NVDA.O	180.50	+	+	+
89%	O REILLY AUTOMOTIVE	ORLY.O	402.62	uu+	u+	u+
33%	OCCIDENTAL PTL.	OXY	44.97	-	o	u+
100%	ONEOK	OKE	73.67	+	u+	uu+
56%	ORACLE	ORCL.K	54.54	o	uo	u+
22%	PAYCHEX	PAYX.O	81.81	o	-	o
0%	PAYPAL HOLDINGS	PYPL.O	105.43	d-	-	dd-
94%	PEPSICO	PEP.O	136.40	+	+	do
33%	PFIZER	PFE	36.83	-	uo	u+
6%	PHILIP MORRIS INTL.	PM	73.30	-	-	uo
100%	PHILLIPS 66	PSX	102.17	+	u+	uu+

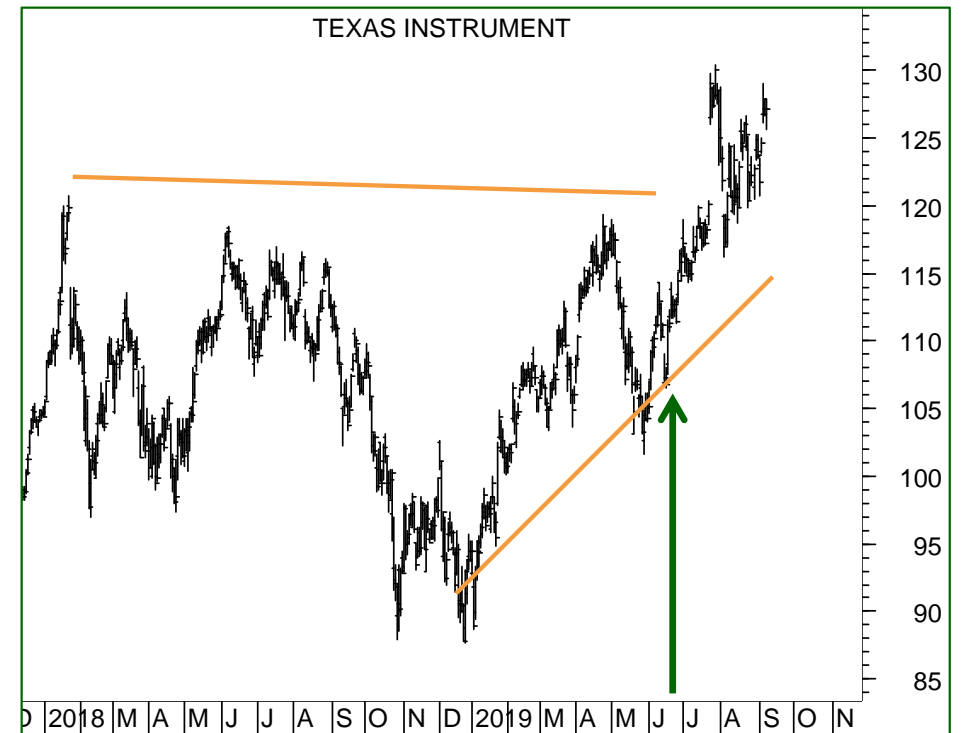
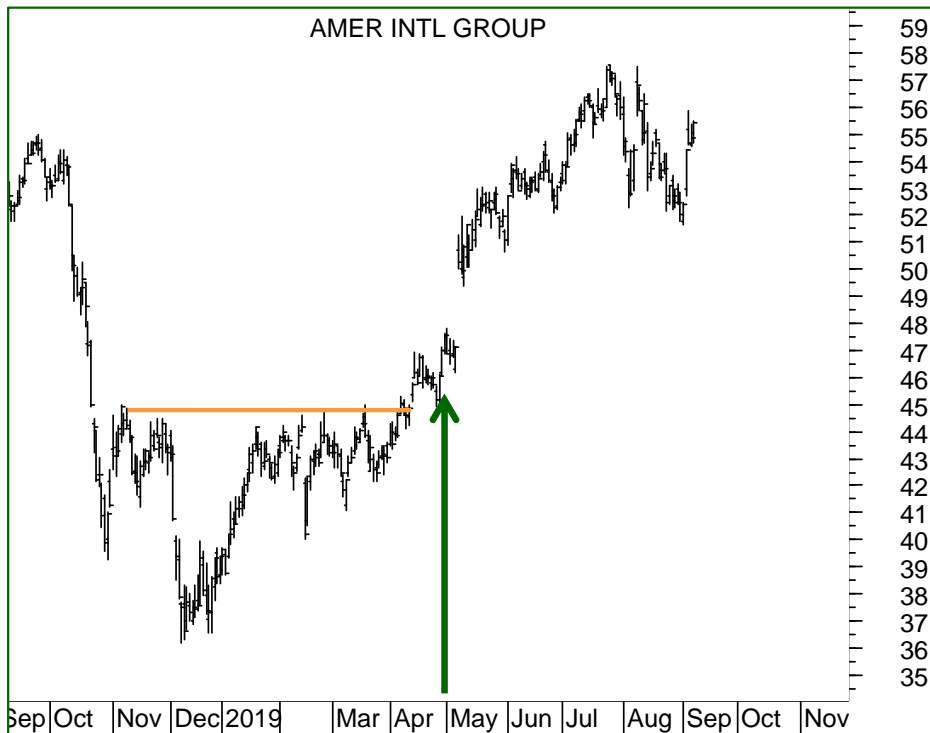
SCORE	COMPANY	RIC	PRICE	LT	MT	ST
100%	PNC FINL.SVS.GP.	PNC	136.29	u+	uu+	u+
100%	PROCTER & GAMBLE	PG	122.17	+	+	+
17%	PROGRESSIVE OHIO	PGR	76.74	-	-	uu+
83%	PROLOGIS	PLD	84.63	+	+	u+
17%	PRUDENTIAL FINL.	PRU	84.20	-	-	u+
94%	PUB.SER.ENTER.GP.	PEG	60.38	+	+	do
50%	PUBLIC STORAGE	PSA	254.81	+	do	dd-
94%	QUALCOMM	QCOM.O	78.21	+	+	+
100%	RAYTHEON 'B'	RTN	189.41	u+	uu+	uu+
100%	REGENCY CENTERS	REG.O	68.14	uu+	uu+	uu+
17%	REGENERON PHARMS.	REGN.O	279.00	-	o	-
22%	ROPER TECHNOLOGIES	ROP	356.96	do	-	d-
89%	ROSS STORES	ROST.O	108.49	+	uu+	uu+
94%	S&P GLOBAL	SPGI.K	260.76	+	+	o
22%	SALESFORCE.COM	CRM	149.54	-	do	do
61%	SCHLUMBERGER	SLB	36.23	uo	uu+	u+
72%	SEMPRA EN.	SRE	141.01	+	+	do
83%	SHERWIN-WILLIAMS	SHW	523.03	+	+	-
67%	SIMON PROPERTY GRO	SPG	158.21	-	uu+	u+
83%	SOUTHERN	SO	59.02	+	+	u+
100%	SOUTHWEST AIRLINES	LUV	53.08	uu+	uu+	+
50%	STARBUCKS	SBUX.O	94.16	+	do	dd-
67%	STRYKER	SYK	217.18	+	+	dd-
100%	SYSCO	SY	76.71	+	+	+
94%	TARGET	TGT	107.95	+	+	+
100%	TE CONNECTIVITY	TEL	95.09	+	uu+	+
100%	TEXAS INSTRUMENTS	TXN.O	127.10	+	+	u+
67%	TRAVELERS COS.	TRV	149.23	+	uo	+
89%	TJX	TJX	56.79	+	u+	+
67%	TRANSOCEAN	RIG	5.48	-	uu+	u+
33%	UNION PACIFIC	UNP	166.12	-	uo	uu+
100%	UNITED PARCEL SER.'B'	UPS	121.66	+	+	u+
100%	UNITED TECHNOLOGIE	UTX	134.11	uu+	uu+	u+
11%	UNITEDHEALTH GROU	UNH	230.68	-	-	uu+
100%	US BANCORP	USB	54.91	u+	uu+	u+
89%	V F	VFC	89.63	uu+	uu+	u+
50%	VALERO ENERGY	VLO	79.38	-	uu+	uu+
89%	VERIZON COMMUNICA	VZ	58.66	+	+	+
0%	VERTEX PHARMS.	VRTX.O	174.81	d-	dd-	-
83%	VISA 'A'	V	181.55	+	u+	+
89%	WALGREENS BOOTS AL	WBA.O	55.59	uu+	uu+	u+
83%	WALMART	WMT	116.33	+	+	+
67%	WALT DISNEY	DIS	138.83	u+	uo	u+
50%	WASTE MANAGEMENT	WM	117.62	+	do	d-
100%	WELLS FARGO & CO	WFC	48.41	uu+	uu+	u+
78%	WELLTOWER	WELL.K	90.21	+	+	do
33%	WILLIAMS	WMB	24.68	-	uo	u+
33%	XILINX	XLNX.O	105.51	-	uo	u+
83%	YUM! BRANDS	YUM	117.81	+	+	+
94%	ZOETIS	ZTS	126.66	+	+	do

# Dow Jones 30 Industrial Index constituent stocks

SCORE	COMPANY	RIC	PRICE	LT	MT	ST	COMMENT	DATE BOUGHT	PRICE BOUGHT	PROFIT or LOSS
50%	3M	MMM	165.94	-	u+	u+				
33%	AMERICAN EXPRESS	AXP	119.92	do	-	uu+	Supports are 118 / 117 and 114.			
100%	APPLE	AAPL.O	214.17	+	+	u+	Sell signals to be triggered if 205, 198 is broken. Support is 187 or 169.	27.06.2019	201.10	6.50%
67%	BOEING	BA	358.78	o	+	do	BUY. The triangle from 23.8.2019 is likely to break to the upside. Stop 352.	10.09.2019	358.80	
89%	CATERPILLAR	CAT	127.25	uu+	uu+	u+	BUY if the resistance at 130 / 131 is broken.			
28%	CHEVRON	CVX	119.39	uo	-	u+	BUY based on the strength o the support at 113.	10.09.2019	119.40	
17%	CISCO SYSTEMS	CSCO.O	48.58	-	-	u+				
72%	COCA COLA	KO	54.52	+	+	do	Sell signal if 54 and 53 is broken.			
33%	DOW CHEMICAL	DOW	44.45	-	uo	uu+				
50%	EXXON MOBIL	XOM	71.49	-	uu+	u+	BUY if the resistance at 72.50 / 73 is broken. Resistance is 76.			
100%	GOLDMAN SACHS GP.	GS	211.98	u+	uu+	u+	BUY if the resistance at 216 is broken.			
94%	HOME DEPOT	HD	232.87	+	+	+	Must rise above 237 to signal 260.			
100%	INTEL	INTC.O	51.59	uu+	u+	u+	BUY if the resistance at 52.50 is broken.			
100%	INTERNATIONAL BUS.M	IBM	142.60	u+	uu+	u+	BUY if the resistance at 144 and 147 are broken.			
6%	JOHNSON & JOHNSON	JNJ	126.95	-	-	uo				
100%	JP MORGAN CHASE & C	JPM	115.40	uu+	uu+	u+	BUY. Likely to break the consolidation from eaily 2018 to the upside.	10.09.2019	115.40	
72%	MCDONALDS	MCD	217.26	+	+	uo	Sell signals if 215.50 and 212.50 are broken.			
22%	MERCK & COMPANY	MRK	83.47	do	dd-	dd-	Uptrend topped. Sell signals if 82 and 78.50 are broken.			
83%	MICROSOFT	MSFT.O	137.52	+	uo	u+	Sell signals to be triggered if 133, 129 are broken.			
89%	NIKE 'B'	NKE	88.67	uu+	uu+	+	Must rise above the long-term resistance at 90 / 91 to signal 97 / 99.			
33%	PFIZER	PFE	36.83	-	uo	u+				
100%	PROCTER & GAMBLE	PG	122.17	+	+	+	Major resistance is at 124.50.			
67%	TRAVELERS COS.	TRV	149.23	+	uo	+	Sell signals will be triggered if the supports at 145, 141 are broken.			
100%	UNITED TECHNOLOGIE	UTX	134.11	uu+	uu+	u+	Sell signals will be triggered if the supports at 129, 125 are broken.			
11%	UNITEDHEALTH GROUP	UNH	230.68	-	-	uu+				
89%	VERIZON COMMUNICAT	VZ	58.66	+	+	+	Watching the supports at 57.50 and 56.70 / 56.30. Sell if broken.	28.08.2019	57.90	1.31%
83%	VISA 'A'	V	181.55	+	u+	+	Sell signals will be triggered if the supports at 179 and 174 are broken.			
89%	WALGREENS BOOTS AL	WBA.O	55.59	uu+	uu+	u+	The long-term downtrend is bottoming.			
83%	WALMART	WMT	116.33	+	+	+	Resistance is at 116.50, 118, 120 and the big range of 125 / 127. Support 108, 104, 98.			
67%	WALT DISNEY	DIS	138.83	u+	uo	u+				

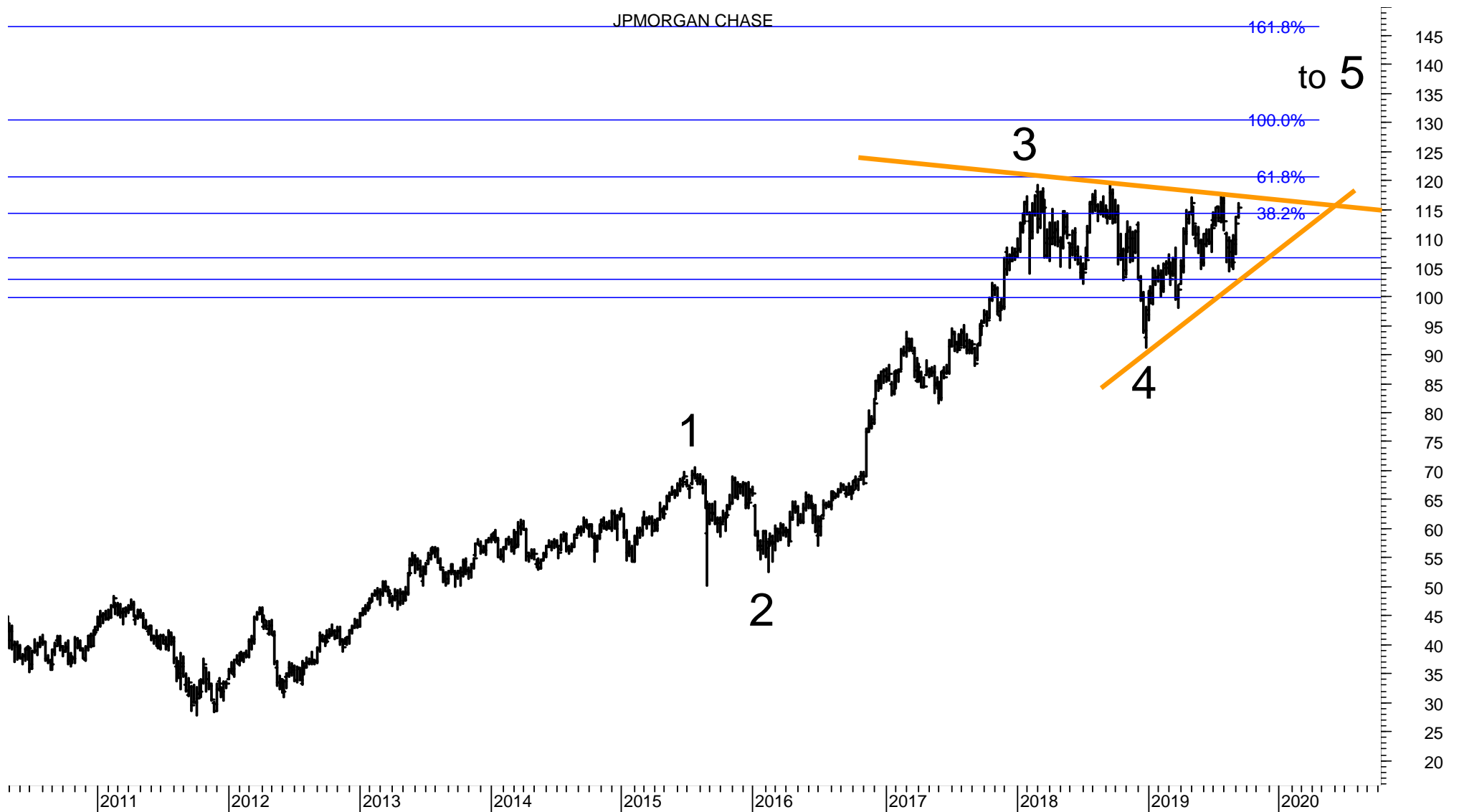
## Other US stocks

SCORE	COMPANY	RIC	PRICE	LT	MT	ST	COMMENT	DATE BOUGHT	PRICE BOUGHT	PROFIT or LOSS
83%	AMERICAN INTL.GP.	AIG	55.41	+	uu+	uu+	Sell the position if 51.70 is broken. Support is at 49 and 44.	01.05.2019	47.8	15.92%
72%	COLGATE-PALM.	CL	73.19	+	do	do	Sell the position if 69.50 is broken.	30.04.2019	72.1	1.51%
94%	DUKE ENERGY	DUK	93.72	+	+	do	Long-term resistance is at 95.	14.06.2019	87.95	6.56%
100%	EBAY	EBAY.O	41.40	+	uu+	uu+	Sell the position if 37.50 is broken.	13.06.2019	39.25	5.48%
50%	FIDELITY NAT.INFO.SV	FIS	133.84	+	do	dd-	TOOK PROFIT of 15%.			
89%	GENERAL DYNAMICS	GD	188.07	+	+	o	Sell the position if 181 is broken.	26.06.2019	179.65	4.69%
78%	MEDTRONIC	MDT	107.93	+	+	do	Sell the position if 104 is broken.	11.06.2019	97.8	10.36%
100%	MICRON TECHNOLOGY	MU.O	49.13	+	+	u+	Hold.	10.07.2019	43.1	13.99%
50%	NORTHROP GRUMMAN	NOC	355.83	+	do	d-	TOOK PROFIT OF 14%.			
100%	PHILLIPS 66	PSX	102.17	+	u+	uu+	Hold.	02.07.2019	95.6	6.87%
100%	TEXAS INSTRUMENTS	TXN.O	127.10	+	+	u+	Sell signals if 119.50 and 114.50 are broken.	27.06.2019	115.15	10.38%
89%	TJX	TJX	56.79	+	u+	+	Hold.	09.07.2019	55	3.25%



## JP MORGAN – weekly chart

JP Morgan is likely to break the triangle from early 2018 to the upside.  
Resistance is at 120, 130 or 147.  
Supports are 107, 103, 99.



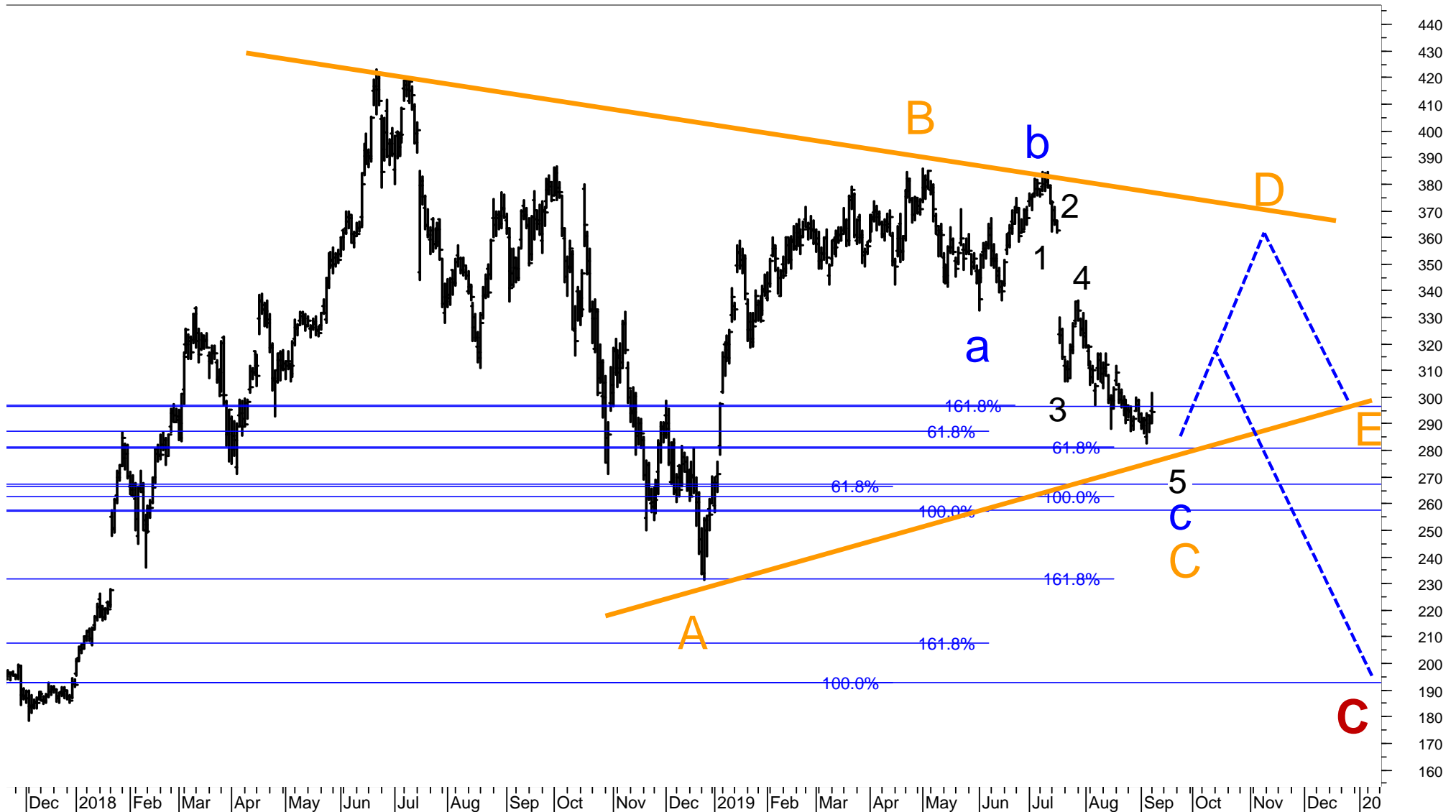
# NETFLIX – daily chart

Netflix is likely to end a corrective FLAT a-b-c (blue) from the high in May 2019.

The decline from May 2019 could be Wave C of a large Triangle A-B-C-D-E (orange) which originated in June 2018.

Wave C would be 0.618 times the length of Wave A 265 / 260.

As an alternate count, the decline from 2018 could be a large FLAT with Wave C (red) being equal to Wave A at 190.



## TRANSOCEAN – 10-minute chart (chart is reprinted from my Chart Outlook of 20.8.2019)

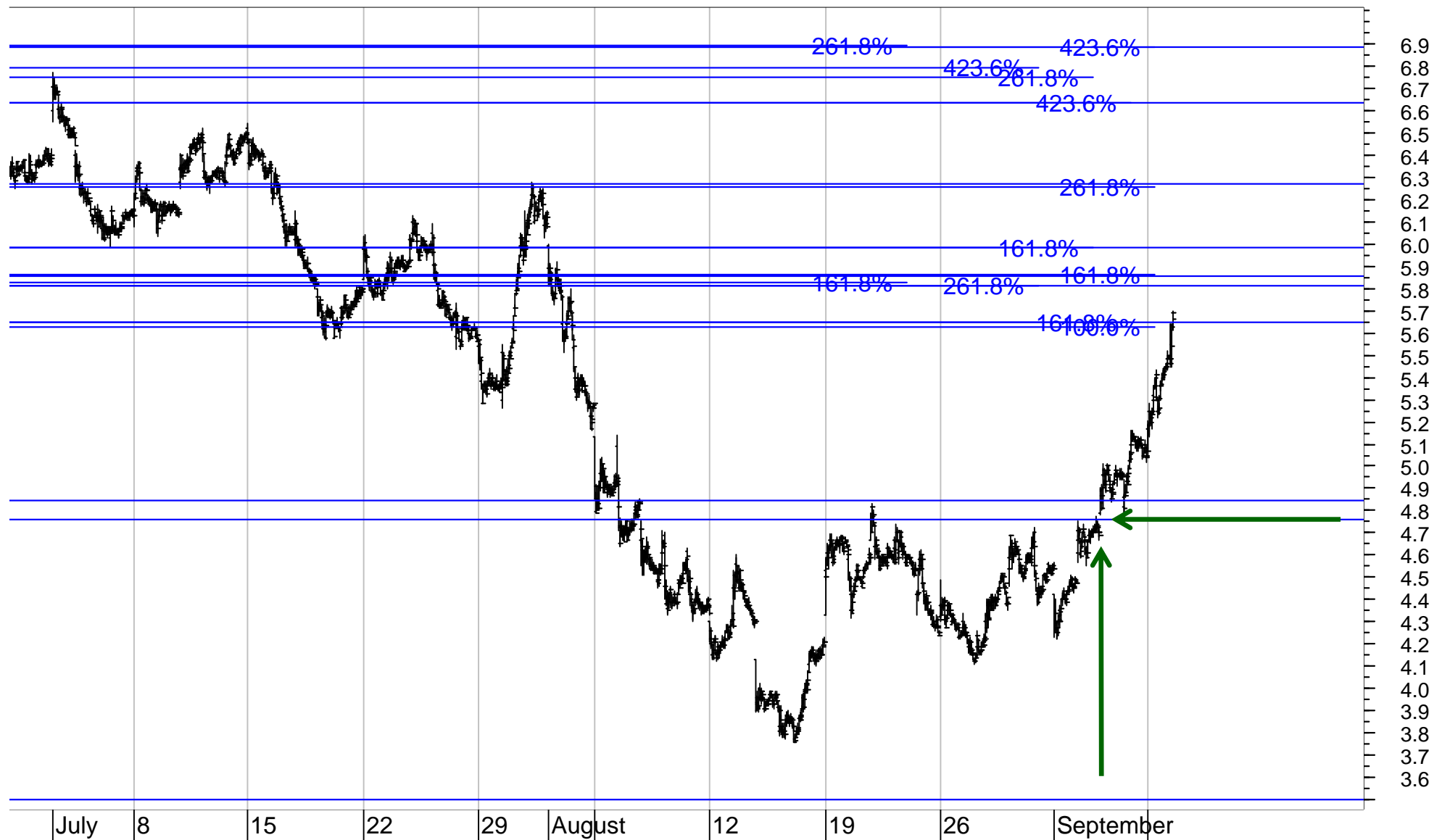
Tansocean could trigger a buy signal only if 4.75 / 4.85 and 4.95 is broken.  
Supports are 4.47 and 4.33.





## TRANSOCEAN – 10-minute chart

Transocean broke out of the base formation at 4.75 / 4.85.  
The next resistance range is 5.80 / 6.00 and 6.30, 6.60 or 6.90.



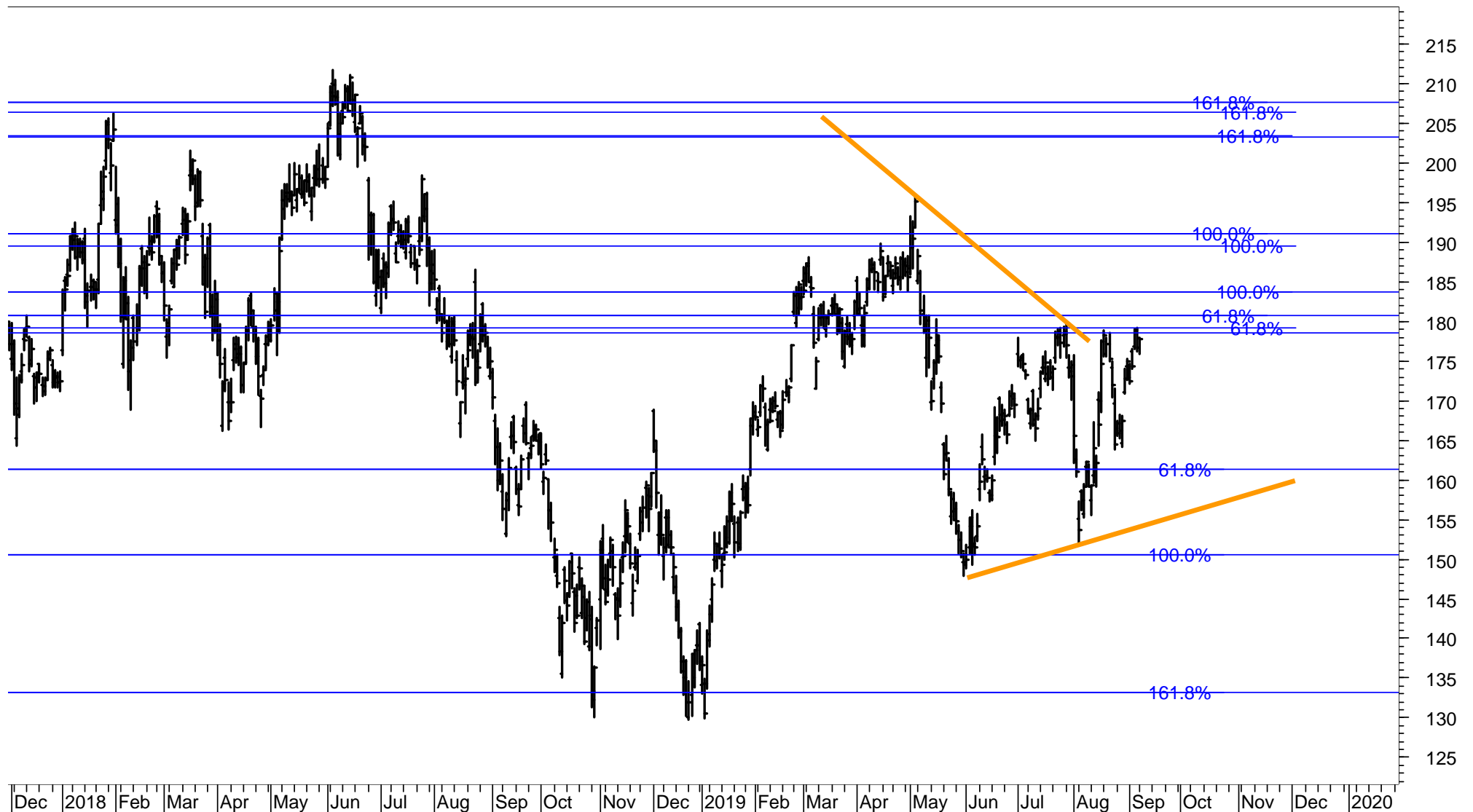
# JAPAC 100 stocks – listed according to the Score (range from 100% to 0%, 40%-60% is neutral)

SCORE	COMPANY	RIC	PRICE	LT	MT	ST
100%	ALIBABA GRP AD/d	BABA.K	177.78	u+	u+	u+
100%	HYUNDAI MOBIS/d	012330.KS	248'500.00	+	+	u+
100%	NTT DOCOMO/d	9437.T	2'751.00	+	u+	uu+
100%	SAMSUNG ELEC-1/d	005935.KS	39'050.00	u+	uu+	+
100%	SAMSUNG ELECTR/d	005930.KS	47'000.00	u+	uu+	+
100%	SHIN-ETSU CHEM/d	4063.T	11'285.00	+	+	u+
100%	SK HYNIX/d	000660.KS	83'000.00	+	+	uu+
100%	SONY CORP/d	6758.T	6'496.00	+	u+	uu+
100%	TAIWAN SEMICON/d	2330.TW	261.50	+	+	u+
100%	TOYOTA MOTOR C/d	7203.T	7'183.00	+	+	+
94%	HYUNDAI HEAVY /d	267250.KS	338'000.00	+	+	+
94%	KALBE FARMA TB/d	KLBF.JK	1'675.00	+	+	+
94%	KOREA SHIPBUIL/d	009540.KS	120'000.00	uu+	+	+
94%	KT G/d	033780.KS	102'000.00	u+	+	o
94%	NAVER/d	035420.KS	151'000.00	+	+	+
94%	NCSOFT/d	036570.KS	550'000.00	+	+	+
94%	SAMSUNG HEAVY/d	010140.KS	8'100.00	u+	+	+
94%	SEMEN INDONESIA/d	SMGR.JK	13'050.00	+	+	o
94%	S-OIL/d	010950.KS	97'600.00	u+	+	+
94%	UNILEVER INDON/d	UNVR.JK	47'275.00	+	+	+
89%	HONDA MOTOR/d	7267.T	2'791.00	uo	uu+	u+
89%	MITSUB UFJ FG/d	8306.T	545.80	uu+	u+	u+
83%	BHARTI AIRTEL/d	BRTI.NS	349.25	+	uu+	uu+
83%	INFOSYS LTD/d	INFY.NS	829.10	+	+	u+
78%	CHAROEN POKPHA/d	CPIN.JK	5'125.00	uo	u+	+
78%	LG HOUSEHOLD/d	051900.KS	1'265'000.00	uo	uu+	u+
78%	MIZUHO FINANC/d	8411.T	159.00	uo	u+	uu+
78%	NTT/d	9432.T	5'126.00	+	uu+	o
78%	SAMSUNG EL-MEC/d	009150.KS	97'500.00	uo	u+	u+
78%	SK INNOVATION/d	096770.KS	166'500.00	uo	u+	u+
72%	NETMARBLE/d	251270.KS	95'700.00	uo	u+	+
72%	WOONGJIN COWAY/d	021240.KS	80'900.00	uu+	u+	uu+
67%	INDOCEMENT T P/d	INTP.JK	21'700.00	+	o	uu+
67%	KAKAO/d	035720.KS	135'500.00	+	+	dd-
61%	AMOREPACIFIC/d	090430.KS	139'500.00	uo	uu+	u+
61%	BANK OF CHINA/d	3988.HK	3.0900	uo	uu+	u+
61%	FANUC LTD/d	6954.T	19'470.00	o	uu+	u+
61%	GS HOLDINGS/d	078930.KS	48'600.00	o	uo	u+
61%	HANA FINANCIAL/d	086790.KS	35'050.00	uo	uu+	u+
61%	HYUNDAI STEEL/d	004020.KS	38'950.00	uo	uu+	u+
61%	KIA MOTORS/d	000270.KS	43'300.00	+	uo	uo
61%	LOTTE CHEMICAL/d	011170.KS	244'000.00	o	uu+	u+
61%	TENCENT/d	0700.HK	339.80	o	u+	u+
56%	FAST RETAILING/d	9983.T	65'570.00	u+	uo	u+
56%	KDDI/d	9433.T	2'796.00	+	do	do
50%	CELLTRION HEAL/d	091990.KQ	45'500.00	-	uu+	u+
50%	CNOOC/d	0883.HK	12.22	-	uo	u+
50%	LG DISPLAY/d	034220.KS	14'300.00	-	uu+	u+
50%	LG UPLUS/d	032640.KS	13'500.00	-	uu+	+
50%	MITSUBISHI COR/d	8058.T	2'757.00	-	uo	u+

SCORE	COMPANY	RIC	PRICE	LT	MT	ST
50%	TAKEDA PHARM/d	4502.T	3'629.00	-	uu+	uu+
50%	TELKOM INDONESIA/d	TLKM.JK	4'280.00	+	do	dd-
44%	E-MART/d	139480.KS	116'000.00	-	u+	do
44%	KB FGI/d	105560.KS	42'450.00	uo	uo	u+
44%	KOREA ZINC/d	010130.KS	438'000.00	o	uo	uu+
44%	LG CORP/d	003550.KS	71'900.00	o	uo	+
44%	LOTTE SHOPPING/d	023530.KS	136'000.00	-	uu+	+
44%	POSCO/d	005490.KS	222'500.00	uo	uo	u+
44%	SAMSUNG BIOLOG/d	207940.KS	283'000.00	-	o	uo
33%	CELLTRION/d	068270.KS	165'000.00	-	uo	u+
33%	CENTRAL JAPAN /d	9022.T	20'785.00	-	o	u+
33%	DB INSURANCE/d	005830.KS	50'700.00	-	uo	u+
33%	HYUNDAI ENG&CO/d	000720.KS	44'500.00	-	uo	u+
33%	IBK/d	024110.KS	13'100.00	-	uo	u+
33%	INDAH KIAT PUL/d	INKP.JK	7'125.00	-	uo	uu+
33%	KANGWON LAND/d	035250.KS	29'200.00	-	uo	u+
33%	NISSAN MOTOR C/d	7201.T	697.50	-	o	u+
33%	SK HOLDINGS/d	034730.KS	203'000.00	-	uo	u+
33%	SMFG/d	8316.T	3'657.00	-	uo	u+
33%	UNITED TRACTOR/d	UNTR.JK	22'850.00	-	uo	u+
28%	CANON INC/d	7751.T	2'858.00	uo	-	u+
28%	HANON SYSTEMS/d	018880.KS	11'550.00	o	-	uu+
28%	LG CHEM/d	051910.KS	325'000.00	-	o	do
28%	SHINHAN FINANC/d	055550.KS	42'150.00	uo	-	u+
22%	HYUNDAI GLOVIS/d	086280.KS	153'000.00	+	d-	dd-
22%	LG ELECTRONICS/d	066570.KS	65'000.00	o	-	o
22%	MIRAE ASSET DW/d	006800.KS	7'410.00	o	-	uo
22%	SAMSUNG SDI/d	006400.KS	232'500.00	+	dd-	-
17%	ASTRA INTL TBK/d	ASII.JK	6'625.00	-	-	u+
17%	BANK RAKYAT IN/d	BBRI.JK	4'150.00	do	d-	do
17%	HYUNDAI MOTOR/d	005380.KS	127'500.00	o	-	uo
17%	RELIANCE/d	RELI.NS	1'222.20	-	do	dd-
17%	SAMSUNG C&T/d	028260.KS	88'700.00	-	o	dd-
17%	SAMSUNG FIRE I/d	000810.KS	233'000.00	-	-	u+
17%	SAMSUNG LIFE/d	032830.KS	70'400.00	-	-	u+
11%	JAPAN POST HLD/d	6178.T	999.00	-	-	u+
11%	JAPAN TOBACCO/d	2914.T	2'274.50	-	-	u+
11%	KAO CORPORATIO/d	4452.T	7'637.00	-	-	o
11%	TATA CONSULT/d	TCS.NS	2'182.85	do	dd-	dd-
6%	BANK BNI TBK/d	BBNI.JK	7'550.00	-	-	o
6%	BANK MANDIRI T/d	BMRI.JK	6'975.00	d-	-	uoi
6%	RECRUIT HOLDIN/d	6098.T	3'175.00	-	-	uo
6%	SK TELECOM/d	017670.KS	240'000.00	-	-	do
6%	SOFTBANK GROUP/d	9984.T	4'711.00	-	-	o
0%	GUDANG GARAM T/d	GGRM.JK	68'050.00	-	d-	dd-
0%	H M SAMPOERNA/d	HMSA.JK	2'770.00	-	-	-
0%	HANKOOK TIR TE/d	161390.KS	29'450.00	-	-	d-
0%	HANMI PHARM/d	128940.KS	276'000.00	-	-	-
0%	KOREA ELEC POW/d	015760.KS	25'250.00	-	d-	d-
0%	SAMSUNG SDS/d	018260.KS	197'000.00	-	-	d-

# ALIBABA

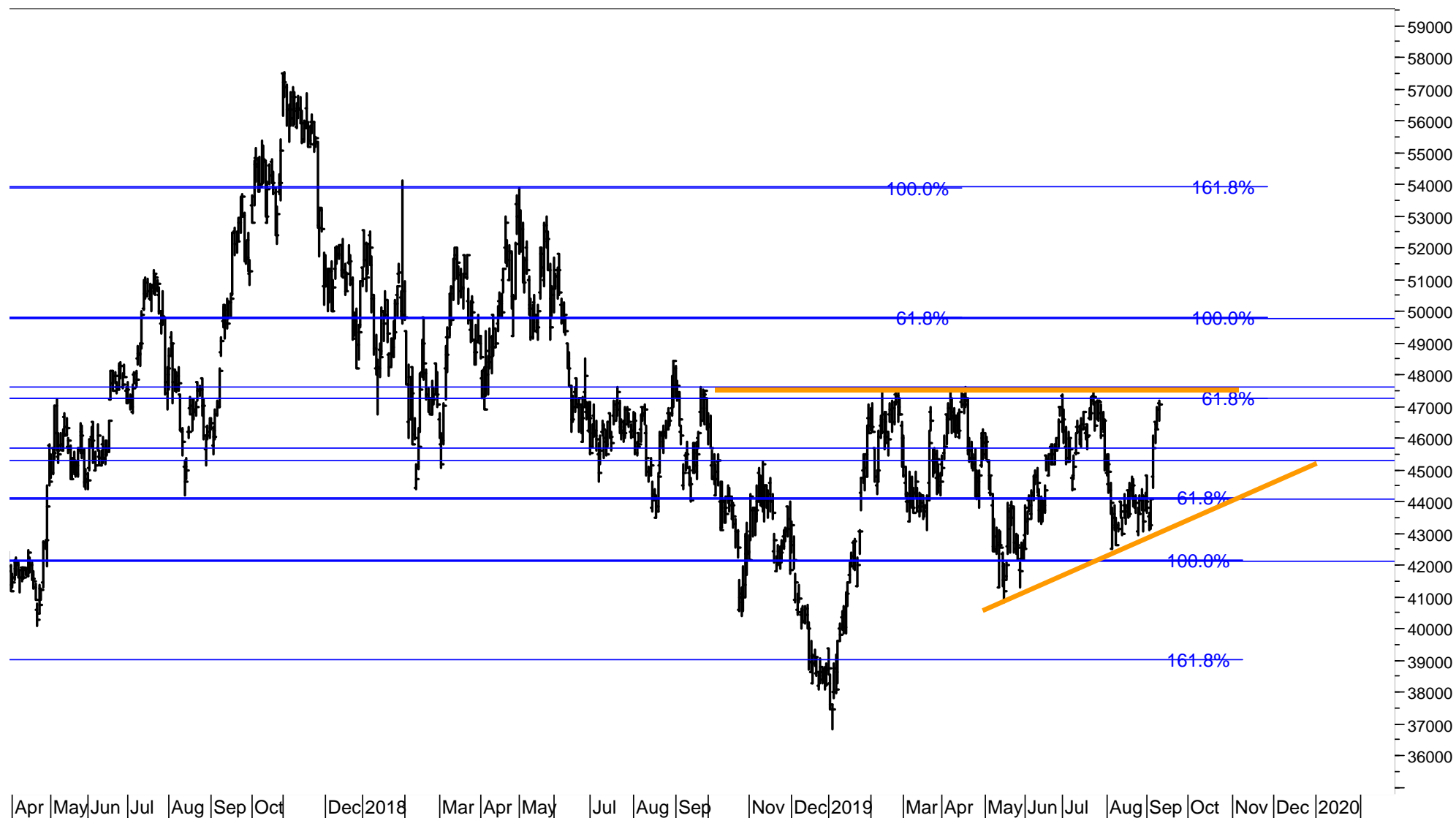
Based on the wave pattern and its Fibonacci correlations, Alibaba will trigger a major BUY signal if it breaks the resistance 178 / 184. Resistance levels are at 191, 204 / 208. Supports are at 161, 150 or 133.



# SAMSUNG ELECTRONICS

Based on the wave pattern and its Fibonacci correlations, Samsung will trigger a major BUY signal if it breaks the resistance at 47.2k / 47.8k.

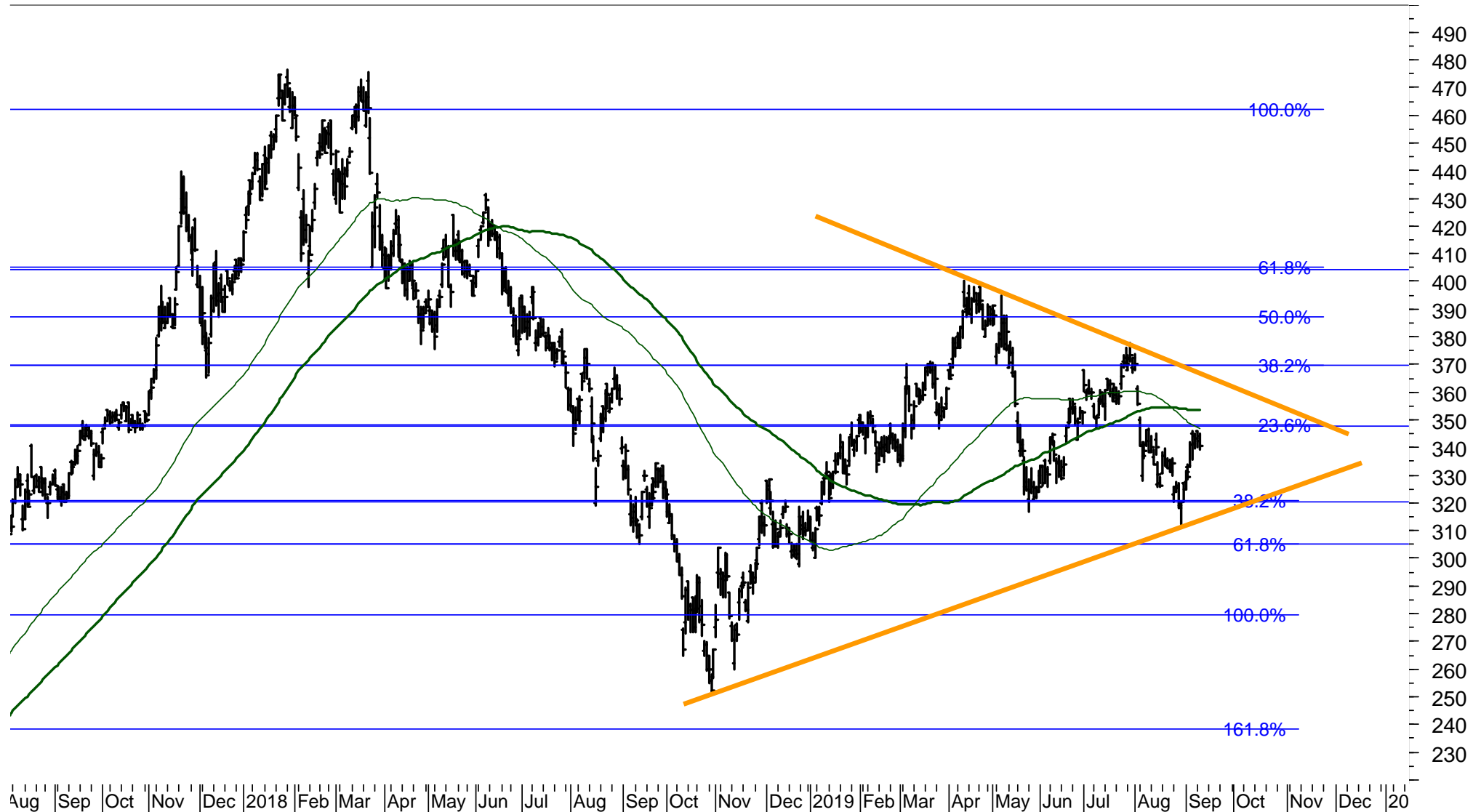
Next resistance and target is 49.8k or 54k. Supports are 45.8k / 45.3k or 44k or 42k.



# TENCENT

Tencent fell to the lower end of the support range, which I had located between 325 and 319 / 314. The present rally has resistance at 348 / 350.

Based on the wave pattern and its Fibonacci correlations, a break of this range will trigger a medium-term uptrend signal with next resistance at 370 or 405. Supports are at 320, 305 or 280.



# TOYOTA

Based on the wave pattern and its Fibonacci correlations, Toyota will trigger a major BUY signal if it breaks the resistance at 7300 / 7400. Next resistances are at 7800 / 8000 or 8500 to 9000. Supports are at 6950, 6800 or 6550.





## Disclaimer

**Copyright © 2018 and 2019; FinChartOutlook GmbH, Rolf Bertschi, all rights reserved.**

This Publication is designed for sophisticated money managers who are aware of the risk in securities investments and market forecasting. The analysis herein is based both on technical and cyclic readings and the recommendations represent the opinion of the Publisher, FinChartOutlook GmbH. Past performance does not imply or guarantee profitable results in the future. Before making specific investments, further investigation is recommended. Although the information contained in this Publication has been derived from sources which are believed to be reliable, they are not always necessarily complete and cannot be guaranteed. Neither the Publisher, FinChartOutlook GmbH, nor any of its employees, affiliates or subsidiaries shall have any liability for any loss, harm or other detriment which has been sustained by any natural person or entity that has relied on the information contained in this Publication. Any person or entity who does rely on any information contained in this Publication does so at his/her own risk and by doing so assumes all liability for any such loss, harm or other detriment. Employees of the Publisher may at times have positions in the securities referred to in this Publication and may make purchases or sales of these securities while the Publication is in circulation. An advisor / client relationship is not created by the distribution or delivery of this publication.

The information published and opinions expressed are provided by FinChartOutlook GmbH for personal use and for informational purposes only. The information is not intended to provide specific financial, investment, tax, legal or accounting advice for you, and is not intended to be relied upon in that regards. You should not act or rely on the information without professional assistance. Non information published in this Publication constitutes an offer or recommendation, to buy or sell any investment instruments, to effect any transactions, or to conclude any legal act of any kind whatsoever. FinChartOutlook GmbH disclaims, without intention, all liability for any loss or damage of any kind, including any direct, indirect or consequential damages, which might be incurred through the use of any information in this presentation. The entire content of this paper is subject to copyright with all rights reserved. You may save or print out a hard copy, provided that you do not remove any copyright or other proprietary notices. All property rights shall remain with FinChartOutlook GmbH. The content of this Publication may not be reproduced (in whole or in part), transmitted (by electronic means or otherwise), modified, linked into or used for any public or commercial purpose without the prior written permission of Rolf P. Bertschi, FinChartOutlook GmbH.

## Sources

The charts in this publication are from Metastock and Datastream from Thomson Reuters Equis. All indicators and analyses are by Rolf Bertschi.

## Explanations

For a more detailed explanation of the Trend and Momentum Models applied in this Chart Outlook, please see

[www.chartoutlook.com](http://www.chartoutlook.com)

[www.rolfbertschi.ch](http://www.rolfbertschi.ch)

## E-Mail

[rolf.bertschi@chartoutlook.ch](mailto:rolf.bertschi@chartoutlook.ch)

FinChartOutlook GmbH, Rolf P. Bertschi, Dörflistrasse 17, 8903 Birmensdorf ZH, Switzerland

## Disclaimer

**Copyright © 2018 and 2019; FinChartOutlook GmbH, Rolf Bertschi, all rights reserved.**

This Publication is designed for sophisticated money managers who are aware of the risk in securities investments and market forecasting. The analysis herein is based both on technical and cyclic readings and the recommendations represent the opinion of the Publisher, FinChartOutlook GmbH. Past performance does not imply or guarantee profitable results in the future. Before making specific investments, further investigation is recommended. Although the information contained in this Publication has been derived from sources which are believed to be reliable, they are not always necessarily complete and cannot be guaranteed. Neither the Publisher, FinChartOutlook GmbH, nor any of its employees, affiliates or subsidiaries shall have any liability for any loss, harm or other detriment which has been sustained by any natural person or entity that has relied on the information contained in this Publication. Any person or entity who does rely on any information contained in this Publication does so at his/her own risk and by doing so assumes all liability for any such loss, harm or other detriment. Employees of the Publisher may at times have positions in the securities referred to in this Publication and may make purchases or sales of these securities while the Publication is in circulation. An advisor / client relationship is not created by the distribution or delivery of this publication.

The information published and opinions expressed are provided by FinChartOutlook GmbH for personal use and for informational purposes only. The information is not intended to provide specific financial, investment, tax, legal or accounting advice for you, and is not intended to be relied upon in that regards. You should not act or rely on the information without professional assistance. Non information published in this Publication constitutes an offer or recommendation, to buy or sell any investment instruments, to effect any transactions, or to conclude any legal act of any kind whatsoever. FinChartOutlook GmbH disclaims, without intention, all liability for any loss or damage of any kind, including any direct, indirect or consequential damages, which might be incurred through the use of any information in this presentation. The entire content of this paper is subject to copyright with all rights reserved. You may save or print out a hard copy, provided that you do not remove any copyright or other proprietary notices. All property rights shall remain with FinChartOutlook GmbH. The content of this Publication may not be reproduced (in whole or in part), transmitted (by electronic means or otherwise), modified, linked into or used for any public or commercial purpose without the prior written permission of Rolf P. Bertschi, FinChartOutlook GmbH.

## Sources

The charts in this publication are from Metastock and Datastream from Thomson Reuters Equis. All indicators and analyses are by Rolf Bertschi.

## Explanations

For a more detailed explanation of the Trend and Momentum Models applied in this Chart Outlook, please see

[www.chartoutlook.com](http://www.chartoutlook.com)

[www.rolfbertschi.ch](http://www.rolfbertschi.ch)

## E-Mail

[rolf.bertschi@chartoutlook.ch](mailto:rolf.bertschi@chartoutlook.ch)

FinChartOutlook GmbH, Rolf P. Bertschi, Dörflistrasse 17, 8903 Birmensdorf ZH, Switzerland