



GLOBAL CHART OUTLOOK

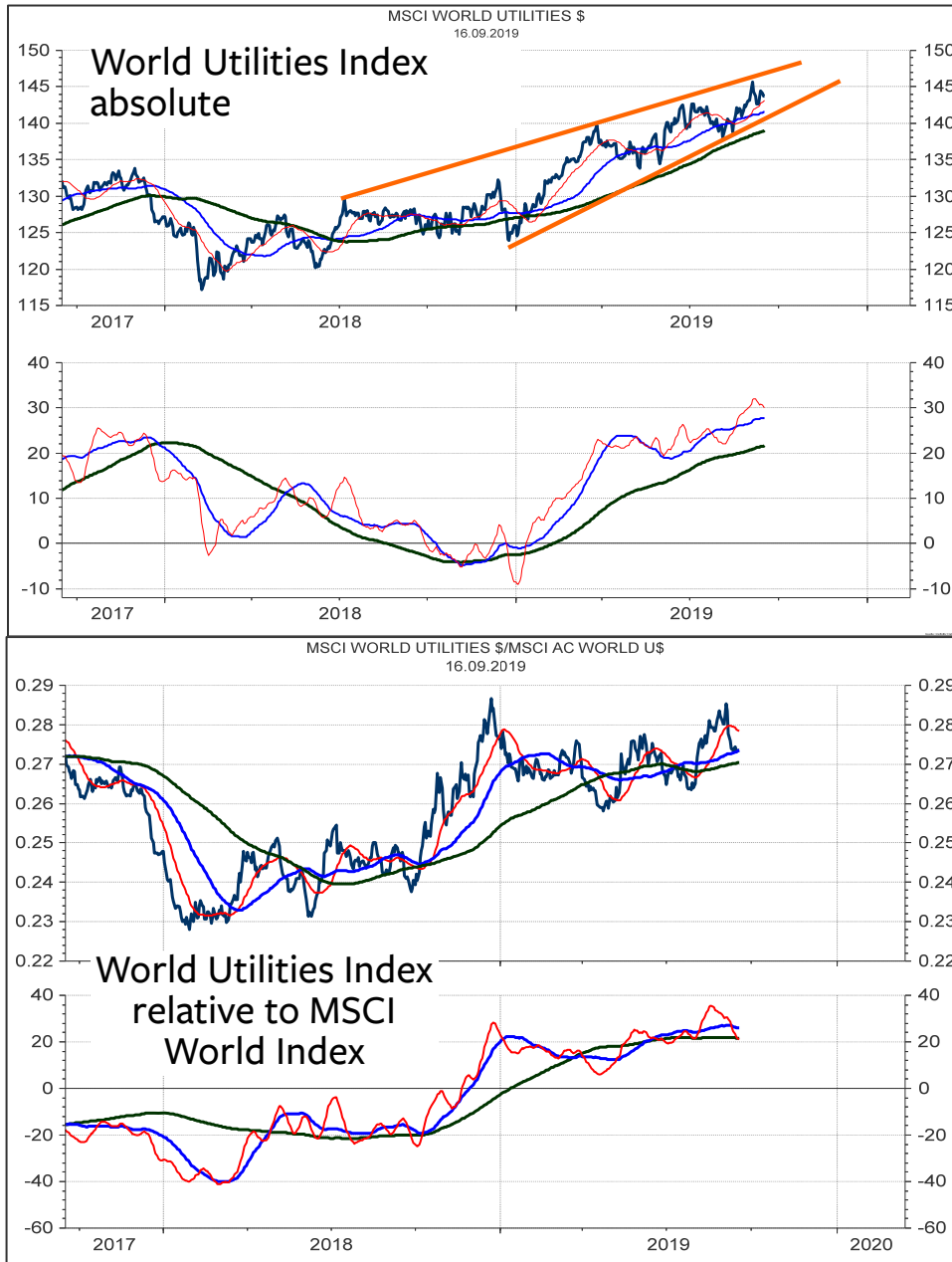
17th September 2019
Global Equities

MSCI World Utilities absolute (top) and relative (bottom)

Medium-term Outlook: FLAT / NEUTRAL

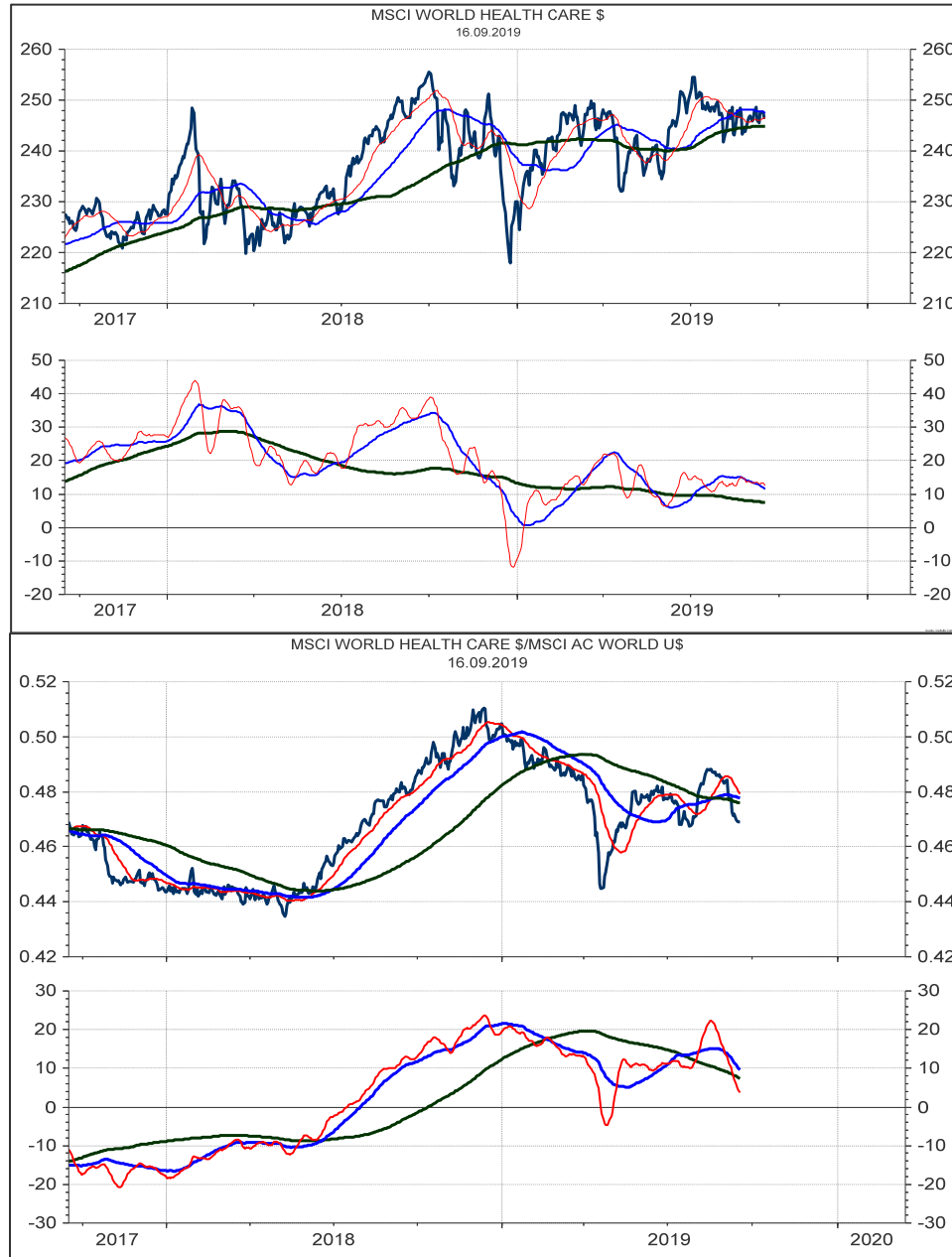
MSCI World Real Estate

Medium-term Outlook: FLAT / NEUTRAL



MSCI World Health Care

Medium-term Outlook: FLAT / NEUTRAL



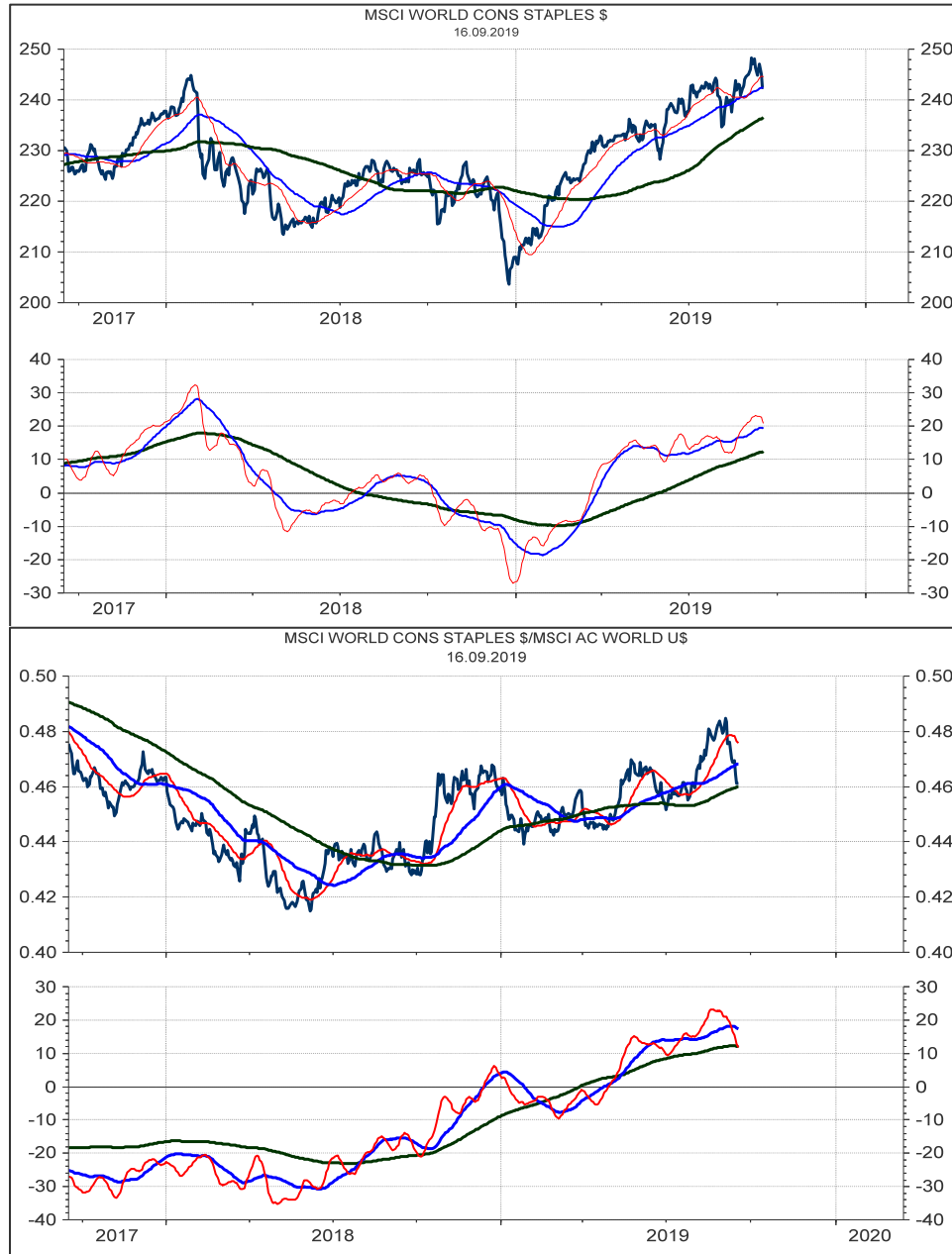
MSCI World Financials

Medium-term Outlook: FLAT / NEUTRAL



MSCI World Consumer Staples

Medium-term Outlook: FLAT / NEUTRAL



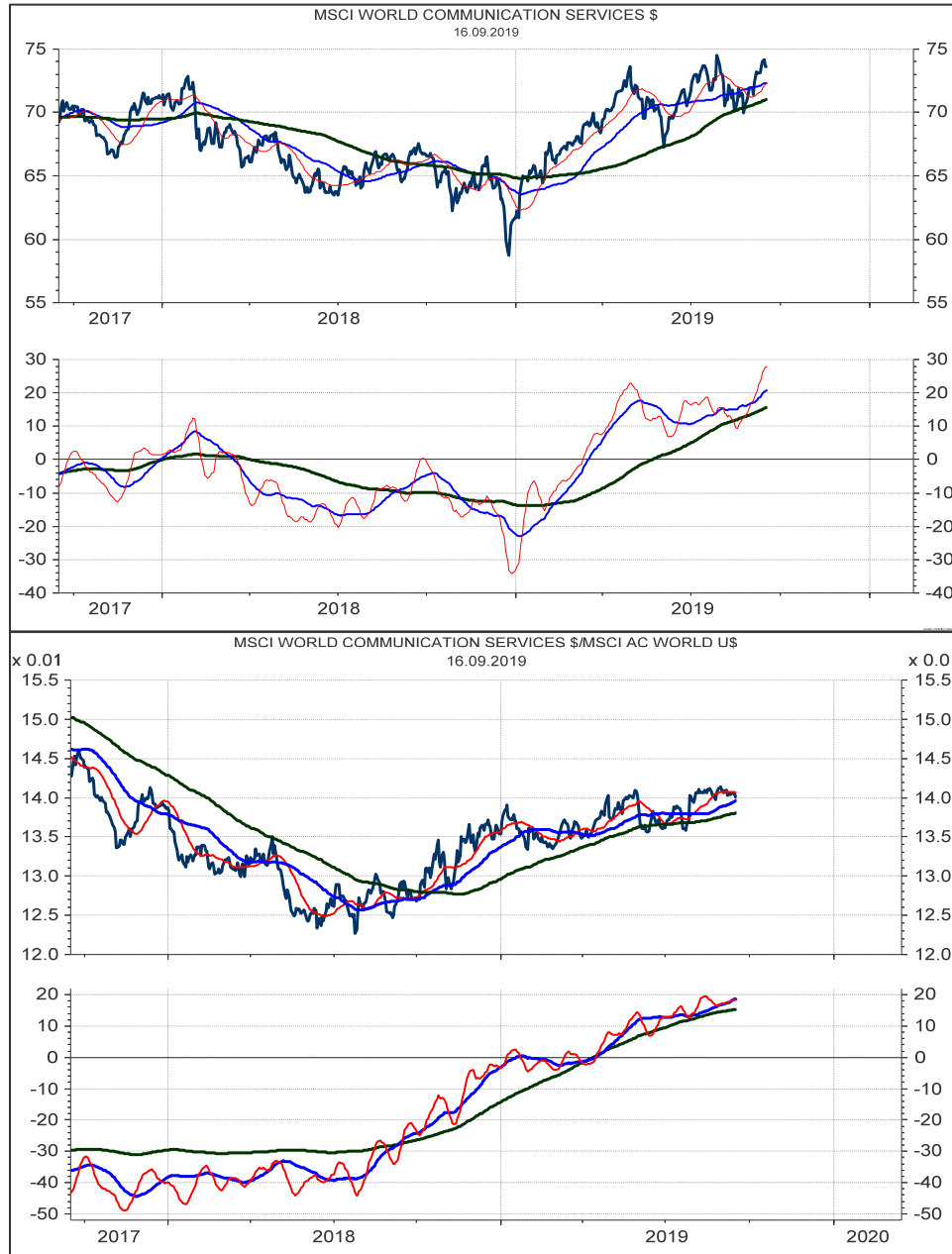
MSCI World Consumer Discretionary

Medium-term Outlook: FLAT / NEUTRAL



MSCI World Communication Services

Medium-term Outlook: FLAT / NEUTRAL



MSCI World Infotech

Medium-term Outlook: FLAT / NEUTRAL



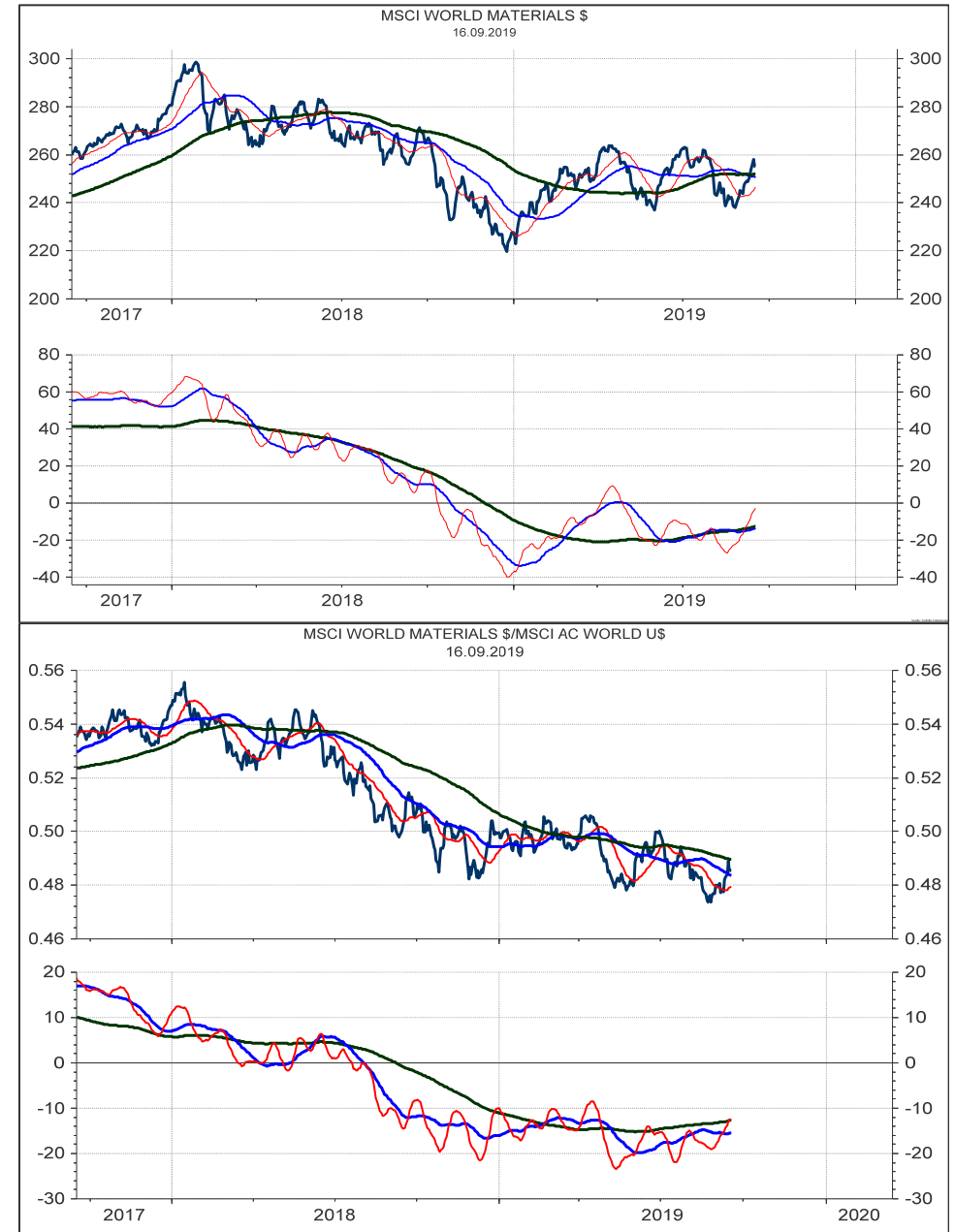
MSCI World Industrials

Medium-term Outlook: FLAT / NEUTRAL



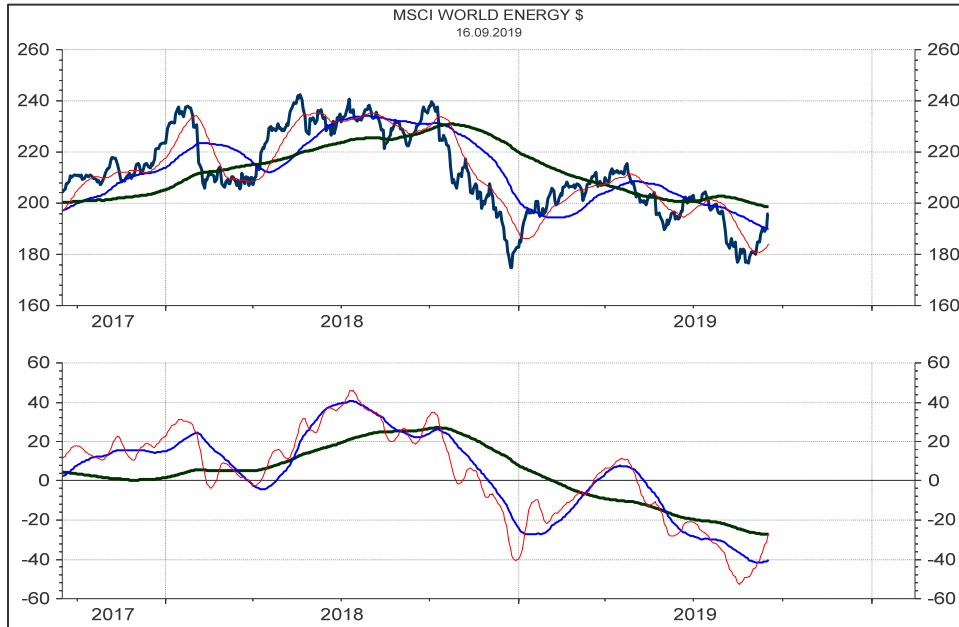
MSCI World Materials

Medium-term Outlook: FLAT / NEUTRAL

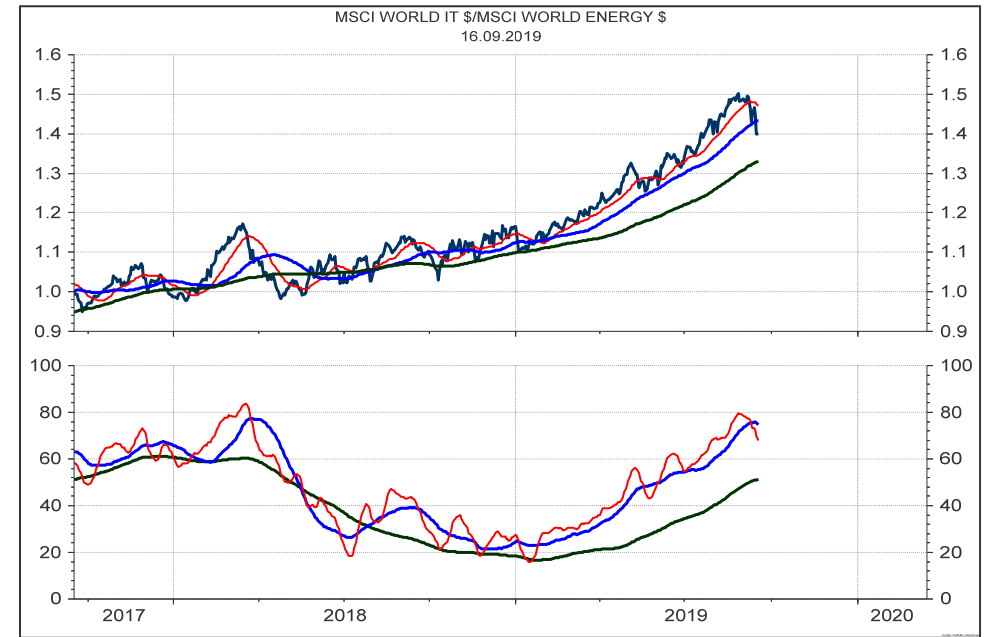


MSCI World Energy

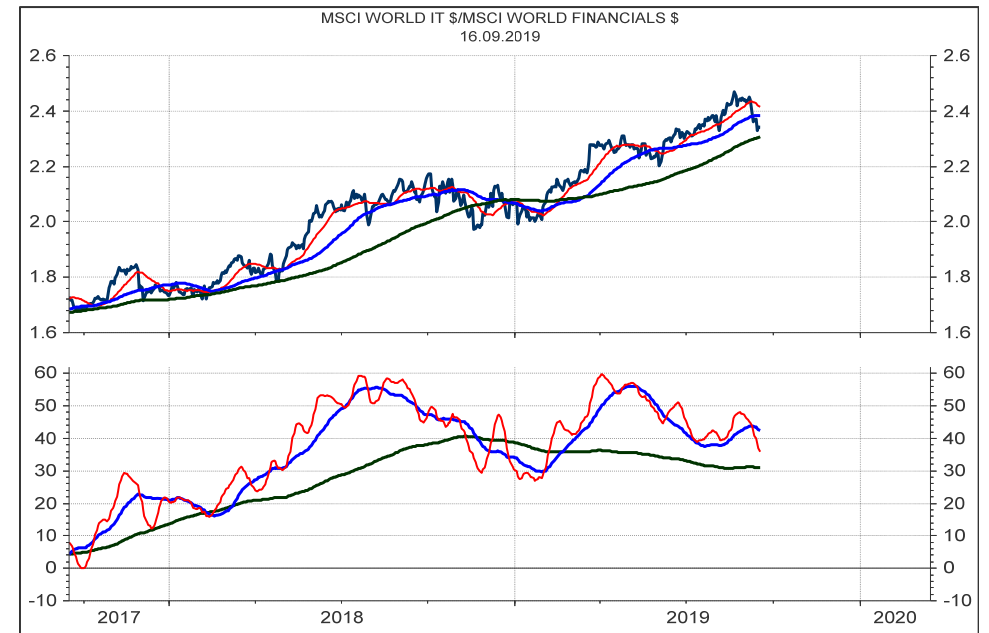
Medium-term Outlook: **FLAT / NEUTRAL**



MSCI World IT relative to MSCI World Energy

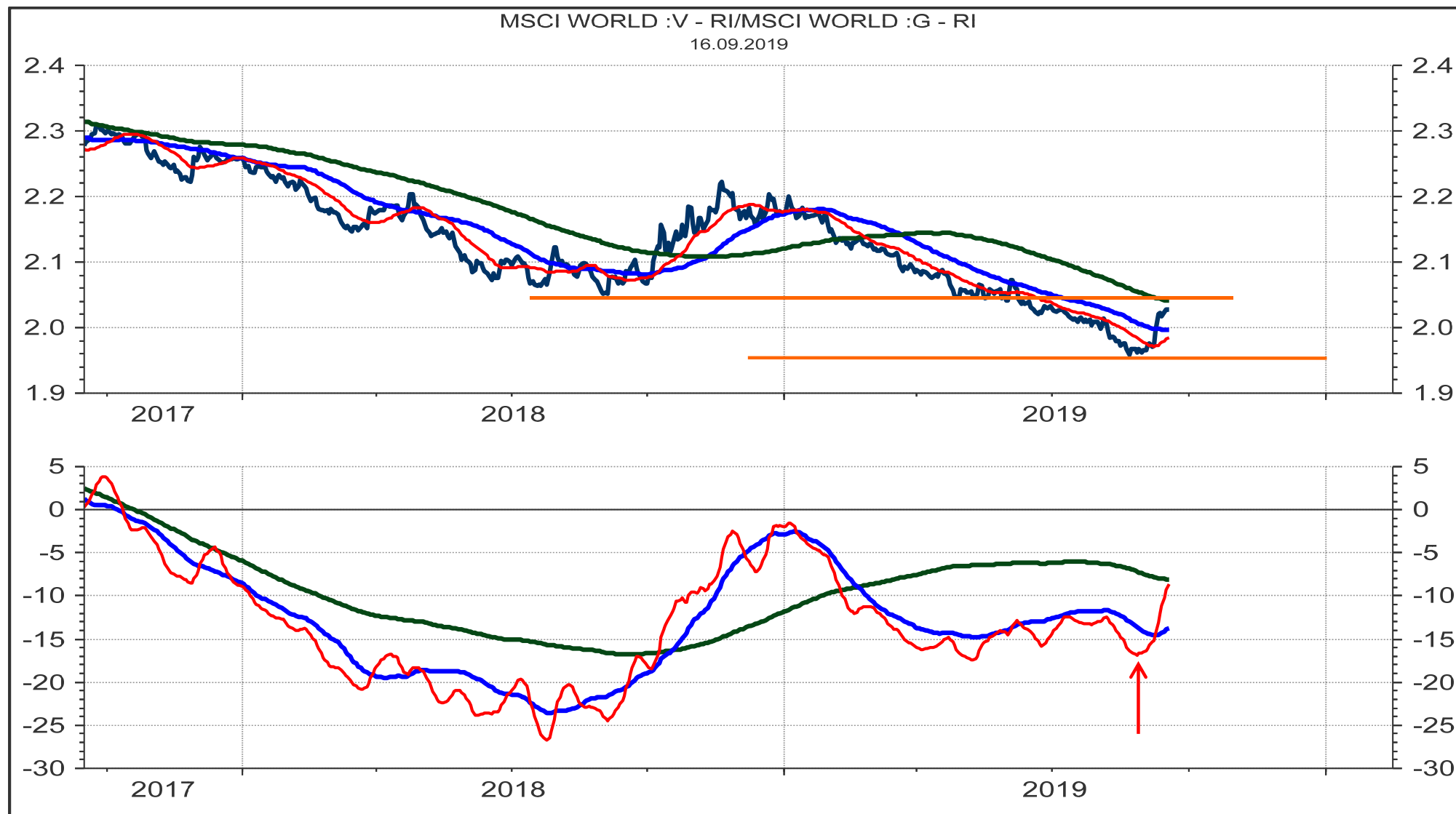


MSCI World IT relative to MSCI World Financials



MSCI World Value relative to Growth

In August I was looking for a medium-term bottom, which would signal a new outperformance of Value relative to Growth. In early September Value did gain strength to test the 144-day average. Presently, the short-term uptrend is overbought and a short-term correction is likely to be seen next. If it holds above the August low the medium- and long-term outlook could turn OUTPERFORM VALUE). With the recent Value upturn the MEDIUM-TERM OUTLOOK is upgraded to FLAT (NEUTRAL VALUE and NEUTRAL GROWTH).



MSCI World Large relative to Small

The medium-term and long-term momentum indicators have topped and World Largecap is turning down relative to Smallcap.

THE MEDIUM-TERM OUTLOOK IS DOWNGRADED TO NEUTRAL (NEUTRAL LARGE CAP and NEUTRAL SMALL CAP).

The next downgrade is likely to be signaled if the relative chart breaks the 144-day moving average and the support both at 4.10.



Swiss SPI 200 constituent stocks – listed according to the Score (range from 100% to 0%, 40%-60% is neutral)

100%	AMS	AMS.S
100%	GR KTBK PS	GRKP.S
100%	CI COM SA I	CIE.S
100%	FISCHER N	FIN.S
100%	RIETER N	RIEN.S
100%	ELMA N	ELMN.S
100%	KOMAX N	KOMN.S
100%	SCHWEITER I	SWTQ.S
100%	INFICON N	IFCN.S
100%	ZURICH INSURANCE	ZURN.S
100%	CS GROUP AG	CSGN.S
100%	ADECCO N	ADEN.S
100%	CLARIANT N	CLN.S
100%	LAFARGEHOLCIM	LHN.S
100%	ABB LTD N	ABBN.S
100%	HELVETIA HLDG	HELN.S
100%	VONTOBEL N	VONN.S
100%	EMS-CHEMIE N	EMSN.S
100%	APG SGA	APGN.S
100%	YPSOMED HOLDING	YPSN.S
100%	VAUDOISE VERS N	VAHN.S
100%	KUEHNE & NAGEL	KNIN.S
100%	ROMANDE ENERGIE	HREN.S
100%	GEBERIT N1	GEBN.S
100%	DAETWYL I	DAE.S
100%	SULZER N	SUN.S
100%	JULIUS BAER N	BAER.S
100%	GAM N	GAMH.S
100%	SWISS RE N	SRENH.S
100%	AUTONEUM N	AUTON.S
100%	GLARNER KB N	GLKBN.S
100%	CONZZETA HLDNG I	CONC.S
100%	SUNRISE N	SRCG.S
100%	ZEHNDER I	ZEHN.S
100%	VAT GROUP N	VACN.S
100%	LANDIS GYR	LANDI.S
94%	SNB N	SNBN.S
94%	VETROPACK I	VET.S
94%	GURIT I	GUR.S
94%	SPICE PRIV AG	SPCE.S
94%	IMPLENIA N	IMP.N
94%	LOGITECH	LOGN.S
94%	ZUG ESTATE HLD	ZUGN.S
94%	SENSIRION N	SENSI.S
89%	BUCHER N	BUCN.S
89%	O FUESSLI N	OFN.S
89%	HIGHL EVNT & ENT	HLEE.S
89%	BVZ HOLDING AG	BVZN.S
89%	SWISSQUOTE GRP N	SQN.S
89%	BASILEA PHARMA	BSLN.S
89%	SWATCH GROUP N	UHRN.S
89%	SIEGFRIED N	SFZN.S
89%	CIE FIN TR I	CFT.S

89%	DUFREY AG	DUFN.S
89%	SCHINDLER PS	SCHP.S
89%	SCHINDLER N	SCHN.S
89%	EDISUN POWER	ESUN.S
89%	BURCKHARDT	BCHN.S
89%	U-BLOX N	UBXN.S
89%	CALIDA HLD N	CALN.S
89%	BKW N	BKWB.S
89%	BURKHALTER AG	BRKN.S
89%	SFS GROUP	SFSN.S
89%	UBS GROUP N	UBSG.S
89%	MOLECULAR PARTNE	MOLN.S
89%	INTERSHOP N	ISN.S
89%	VIFOR PHARMA	VIFN.S
83%	VALORA N	VALN.S
83%	SWISS PRIME SITE	SPSN.S
83%	ALLREAL HLD N	ALLN.S
83%	BACHEM HOLD N	BANB.S
83%	SWISS LIFE HLDG	SLHN.S
83%	JUNGFRAUBAHN N	JFN.S
83%	PARGESA I	PARG.S
83%	ALSO HLD AG	ALSN.S
83%	BELLEVUE GRP N	BBN.S
83%	ORASCOM DEV H	ODHN.S
83%	ARBONIA AG	ARBNO.S
83%	PEACH PROP	PEAN.S
83%	GALENICA	GALE.S
83%	ASMALLWORLD N	ASWN.S
78%	OC OERLIKON CORP	OERL.S
78%	FEINTOOL N	FTON.S
78%	GIVAUDAN N	GIVN.S
78%	AEVIS HOLDING SA	AEVS.S
78%	ARYZTA AG	ARYN.S
78%	IVF HARTMANN	VBSN.S
78%	MOBILEZONE HLD I	MOZN.S
78%	WISEKEY N	WIHN.S
78%	MEDACTA GROUP	MOVE.S
72%	WARTECK N	WARN.S
72%	SWISSCOM N	SCMN.S
72%	ROCHE HOLDING AG	ROG.S
72%	SWATCH GROUP I	UHR.S
72%	SIG COMB GRP N	SIGNC.S
72%	POLYPHOR N	POLN.S
72%	BOSSARD N	BOS.S
72%	SIKA	SIKA.S
72%	LIECH LANDBK	LLBN.S
67%	PANALPINA WELT	PWTN.S
67%	SGS N	SGSN.S
67%	MOBIMO HLDG	MOBN.S
67%	ST GALLER KB N	SGKN.S
67%	BB BIOTECH ORD	BION.S
67%	BFW LIEGENSCH N	BLIN.S
67%	RELIEF THERAPEUT	RLFBS

67%	LEONTEQ	LEON.S
67%	RICHEMONT N	CFR.S
67%	INVESTIM N	IREN.S
67%	IDORSIA N	IDIA.S
61%	PHOENIX I	PM.S
61%	CICOR TECH	CICN.S
61%	LINDT & SP N	LISN.S
61%	BOBST GRP N	BOBNN.S
61%	EFG INT N	EFGN.S
61%	MEYER BURGER N	MBTN.S
61%	POENINA	PNHO.S
56%	BELIMO HOLDING N	BEAN.S
56%	CREALOGIX HLDG	CLXN.S
56%	KUDELSKI	KUD.S
56%	PLAZZA AG	PLANZ.S
56%	LASTMINUTE ORD	LMN.S
50%	BARRY CALLEBAUT	BARN.S
50%	BASLER KTBK PS	BSKP.S
50%	COLTENE N	CLTN.S
50%	SWISS FIN&PROP	SFPN.S
50%	MCH GROUP AG	MCHN.S
50%	TITL BN BERG N	TIBN.S
50%	NEWRON PHARMA N	NWRN.S
44%	ADVAL TECH N	ADV.N
44%	COMET HOLDING	COTNE.S
44%	KLINGELNBERG N	KLIN.S
39%	ORIOR N	ORON.S
33%	STADLER RAIL	SRIL.S
33%	FORBO N	FORN.S
33%	SCHAFFNER N	SAHN.S
33%	BALOISE HLD N	BALN.S
33%	BCV N	BCVN.S
33%	PSP CH PRPTY N	PSPN.S
33%	EVOLVA HOLD AG	EVE.S
33%	NESTLE SA	NESN.S
33%	DKSH N	DKSH.S
33%	CEMBRA MONEY BAN	CMBN.S
28%	BASELLAND KTBK	BLKB.S
28%	INTERROLL N	INRN.S
28%	LINDT & SP PS	LISP.S
28%	TORNOS HOLDING N	TOHN.S
28%	STRAUMANN HLD N	STMN.S
28%	HOCHDORF N	HOCN.S
28%	KARDEX I	KARN.S
28%	MEIER TOBLER GRO	METG.S
28%	BLACKSTONE RES	BLS.S
28%	WALLISER KTBK	WKBS.S
28%	KUROS BIOSCIENCE	KURN.S
28%	OBSEVA SA/d	OBSV.O
22%	GAVAZZI CARLO I	GAV.S
22%	SONOVA H AG	SOON.S
22%	PERROT DUVAL I1	PEDU.S
22%	ZUEBLIN N	ZUBN.S

22%	CEVA LOGISTICS N	CEVAL.S
17%	HYPO BK LENZB N	HBLN.S
17%	ARUNDEL AG	ARONL.S
17%	SCHLATTER N	STRN.S
17%	BERNER KB N	BEKN.S
17%	AIRESES SA	AIRE.S
17%	TAMEDIA N	TAMN.S
17%	LUZERNER KB N	LUKN.S
17%	VALIANT N	VATN.S
17%	VZ HOLDING N	VZN.S
17%	HUBER & S N	HUBN.S
17%	LALIQUE	LLQ.S
17%	METALL ZUG	METN.S
17%	THURGAUER KB PS	TKBP.S
17%	ALCON N	ALCC.S
17%	VARIA US PROP	VARN.S
17%	BELL FOOD GROUP	BELL.S
17%	MEDARTIS	MEDA.S
17%	CASSIOPEA N	SKIN.S
11%	BK LINTH LLB AG	LINN.S
11%	CHAM GROUP AG	CHAMA.S
11%	STARRAG N	STGN.S
11%	PERFECT HOLDING	PRFN.S
11%	DORMAKABA HOLD	DOKA.S
11%	TECAN HLD N	TECN.S
11%	LOENZA GRP AG N	LONN.S
11%	LEM HOLDING N	LEHN.S
11%	PARTNERS GROUPAG	PGHN.S
11%	SANTHERA PHARMA	SANN.S
11%	ZUR ROSE GROUP N	ROSEG.S
11%	LECLANCHE N	LECN.S
11%	HIAG IMMOBILIEN	HIAG.S
11%	FLUGHAFEN ZURICH	FHZN.S
11%	BQ CANT DU JURA	BCJ.S
11%	VP BANK AG	VPBN.S
6%	CPH CHEM&PAPER	CPHN.S
6%	VILLARS N	VILN.S
6%	ZWAHLEN & MAYR	ZWM.S
6%	VON ROLL I	ROL.S
6%	PRIVATE EQUITY N	PEHN.S
6%	ASCOM N	ASCN.S
6%	EMMI N	EMMN.S
6%	BC GENEVE P	BCGE.S
6%	COSMO PHARM N	COPN.S
0%	KTM INDUSTRIES/d	KTMI.VI
0%	ZUGER KB I	ZG.S
0%	MIKRON N	MIKN.S
0%	SCHMOLZ+BICKENB	STLN.S
0%	NOVARTIS N	NOVN.S
0%	TEMENOS N	TEMN.S
0%	GRP MINOTERIES	GMI.S
0%	VALARTIS GROUP	VLRT.S

Last week I stated that „the price gains of the last 2 weeks have reached the first major resistance levels. The short-term rally could pause and then the stocks must clear these levels to signal higher targets.“ Most stocks did trade around the resistance levels for another 2 to 3 days. Some stock traded above the resistance levels by about 1% to 1.5%. Credit Suisse (pages 17 and 18), for example, traded at 13.21, which was 1.5% above the resistance, which I had located at 13. The close in CSG on 13.9.2019 was at 13.10. Thus, for most stocks, for which I had provided resistance and buy levels, a „global“ breakout was not signaled. Most stocks entered the pause, which I was looking for. A great example of such a pause is Georg Fischer (page 19). GF has traced out a FLAT a-b-c, the length of Wave c was 1.618 times the length of Wave a.

The next few days will be quite critical to my assessment of the medium-term outlook for most stocks. If the highs of 16.9.2019 and 17.9.2019 can be broken the resistance levels, which I had provided last week, will be cleared as the stocks should extend their uptrend. Tomorrow, the FED will communicate its rate decision. Thus, I would not be surprised to see tomorrow as the break-up-or-turn-down-day for many of the Swiss and global stocks.

Moreover, as you see in the sector charts of the MSCI Indices (pages 2-7) all sectors are rated FLAT and NEUTRAL. These ratings are unlikely to remain in place for long and I expect a new sector rotation to start soon.

Swiss Market Index 20 constituent stocks

SCORE	COMPANY	RIC	PRICE	LT	MT	ST	COMMENT	DATE BOUGHT	PRICE BOUGHT	PROFIT or LOSS
100%	ABB LTD N	ABBN.S	20.09	+	+	+	Resistance is at 20.40, 20.90 and 21.40.			
100%	ADECCO N	ADEN.S	55.78	+	+	+	Waiting for the present short-term correction to unwind. Support 55.30 / 54.40.			
17%	ALCON N	ALCC.S	58.94	na	o	-	Forming a triangle. Support is 57.70. Resistance is at 59.20 and 60.20.			
100%	CS GROUP AG	CSGN.S	12.65	+	+	+	see chart			
100%	GEBERIT N1	GBN.S	474.60	+	+	+	Likely to rise to long-term resistance at 495.	19.08.2019	438.10	8.33%
78%	GIVAUDAN N	GIVN.S	2'757.00	+	+	+	BUY only if the resistance at 2780 is broken. Next resistance is 2860.			
100%	LAFARGEHOLCIM	LHN.S	48.40	u+	+	+				
11%	LONZA GRP AG N	LONN.S	335.00	do	dd-	dd-	Sold the position with the break of 342 for a profit of 3.5%.			
33%	NESTLE SA	NESN.S	106.22	+	dd-	d-	see chart			
0%	NOVARTIS N	NOVN.S	86.39	d-	-	dd-	see chart	24.05.2019	85.55	0.98%
67%	RICHEMONT N	CFR.S	78.88	+	o	+	Entered another correction at resistance at 82 / 83. Support is 77.70 / 76.50.			
72%	ROCHE HOLDING AG	ROG.S	277.55	o	u+	u+	see chart	24.05.2019	272.10	2.00%
67%	SGS N	SGSN.S	2'445.00	o	+	do				
72%	SIKA	SIKA.S	148.05	o	u+	+	Must clear 152.50 to confirm the mt upgrade. Supports are 141, 138, 130, 123.			
83%	SWISS LIFE HLDG	SLHN.S	480.70	+	+	+				
100%	SWISS RE N	SRENH.S	101.15	+	+	+	Testing the previous high at 103/104. Waiting for a short-term correction.			
72%	SWISSCOM N	SCMN.S	486.00	+	u+	uo				
72%	SWATCH GROUP I	UHR.S	274.50	+	+	+				
89%	UBS GROUP N	UBSG.S	11.32	u+	+	+	Entering a short-term correction from major resistance at 11.50.			
100%	ZURICH INSURANCE	ZURN.S	375.50	+	+	+	Likely to rise to 410 or 440.	10.09.2019	374.00	0.40%

Swiss Performance Index 200 stocks – listed alphabetically (A-Co)

SCORE	COMPANY	RIC	PRICE	LT	MT	ST	COMMENT	DATE BOUGHT	PRICE BOUGHT	PROFIT or LOSS
100%	ABB LTD N	ABB.N.S	20.09	+	+	+	Resistance is at 20.40, 20.90 and 21.40.			
100%	ADECCO N	ADEN.S	55.78	+	+	+	Waiting for the present short-term correction to unwind. Support 55.30 / 54.40.			
44%	ADVAL TECH N	ADV.N.S	165.00	o	+	dd-				
78%	AEVIS HOLDING SA	AEVS.S	12.65	+	u+	+				
17%	AIREIS SA	AIRE.S	1.19	-	o	-				
17%	ALCON N	ALCC.S	58.94	na	o	-	Forming a triangle. Support is 57.70. Resistance is at 59.20 and 60.20.			
83%	ALLREAL HLD N	ALLN.S	186.00	+	+	dd-	TAKE PROFIT of 10%.	02.07.2019	169.80	9.54%
83%	ALSO HLD AG	ALSN.S	147.80	+	+	+				
100%	AMS	AMS.S	46.44	+	u+	+				
100%	APG SGA	APGN.S	275.50	u+	+	+	Hold.	11.09.2019	273.20	0.84%
83%	ARBONIA AG	ARBNO.S	11.78	u+	u+	+	Upgrade could be negated and reversed if 11.40 / 11.00 is broken.			
17%	ARUNDEL AG	ARONL.S	2.00	o	dd-	do				
78%	ARYZTA AG	ARYN.S	0.92	o	+	+				
6%	ASCOM N	ASCN.S	10.06	d-	-	uo				
83%	ASMALLWORLD N	ASWN.S	2.98	+	+	d-	Could be forming a Head and Shoulder Top. Support is at 2.65.			
100%	AUTONEUM N	AUTON.S	121.90	u+	+	+	Deferring the long-term upgrade until the present short-term correction is over.			
83%	BACHEM HLD N	BANB.S	141.40	+	+	dd-	Sell the position if 137 is broken. Could correct to 130 or 120.	20.08.2019	134.60	5.05%
33%	BALOISE HOLD N	BALN.S	171.00	u+	-	uu+	Upgrades to be reversed and sell signals will be triggered if 169.50, 166.50 is broken.			
50%	BARRY CALLEBAUT	BARN.S	1'970.00	+	do	dd-	Entered a medium-term correction. Support is at 1880.			
28%	BASELLAND KTBK	BLKB.S	906.00	-	o	+				
89%	BASILEA PHARMA	BSLN.S	45.16	+	+	o	Stop 44.20.	28.08.2019	47.25	-4.42%
50%	BASLER KTBK PS	BSKP.S	72.00	-	u+	+				
67%	BB BIOTECH ORD	BION.S	64.30	-	u+	uu+				
6%	BC GENEVE P	BCGE.S	196.00	-	-	uo				
33%	BCV N	BCVN.S	743.00	d-	+	d-				
56%	BELIMO HOLDING N	BEAN.S	5'410.00	o	o	+				
17%	BELL FOOD GROUP	BELL.S	257.00	-	d-	+				
83%	BELLEVUE GRP N	BBN.S	22.10	+	uu+	uu+	Will have to break above 23 to signal 24.50 or 26.50. Sell signal if 19.30 is broken.			
17%	BERNER KB N	BEKN.S	216.00	-	-	+				
67%	BFW LIEGENSCH N	BLIN.S	43.40	+	+	dd-				
11%	BK LINTH LLB AG	LINN.S	456.00	o	-	-				
89%	BKW N	BKWB.S	72.40	+	+	do				
28%	BLACKSTONE RES	BLS.S	1.02	o	o	-				
61%	BOBST GRP N	BOBNN.S	52.50	uo	u+	+	Upgrade could be reversed by a Head & Shoulder Top with support at 51 or 49.			
72%	BOSSARD N	BOS.S	136.60	do	+	+				
11%	BQ CANT DU JURA	BCJ.S	56.00	do	d-	d-				
89%	BUCHER N	BUCN.S	315.00	u+	+	+	Likely to trace out a short-term correction before the long-term upgrade is effective.	10.09.2019	312.20	0.90%
89%	BURCKHARDT	BCHN.S	258.00	uu+	+	+	Likely to trace out a short-term correction before the long-term upgrade is effective.			
89%	BURKHALTER AG	BRKN.S	75.70	+	+	do				
89%	BVZ HOLDING AG	BVZN.S	945.00	u+	+	do				
89%	CALIDA HLD N	CALN.S	29.50	u+	+	+	Would have to break 30.50 to confirm the long-term upgrade.			
17%	CASSIOPEA N	SKIN.S	40.00	-	o	-				
33%	CEMBRA MONEY BAN	CMBN.S	100.30	+	dd-	d-	Entered a medium-term correction at the resistance 101/102.			
22%	CEVA LOGISTICS N	CEVAL.S	29.65	-	uo	uo				
11%	CHAM GROUP AG	CHAMA.S	414.00	do	d-	d-				
100%	CI COM SA I	CIE.S	2.70	u+	+	+				
61%	CICOR TECH	CICN.S	48.50	o	uu+	+	Must rise above 50 / 51 to signal 53.50 or 57 / 62.			
89%	CIE FIN TR I	CFT.S	103.00	uo	+	+				
100%	CLARIANT N	CLN.S	20.00	+	+	+	Entered a short-term correction below the resistance at 20.50.			
50%	COLTENE N	CLTN.S	79.30	-	+	+	Buy signal to be triggered only if the resistance at 82 / 83 is broken.			
44%	COMET HOLDING	COTNE.S	85.55	o	uo	+				
100%	CONZZETA HLDNG I	CONC.S	848.00	+	+	+	Stop 840. Support is at 820 / 790.	11.09.2019	853.00	-0.59%
6%	COSMO PHARM N	COPN.S	82.20	-	-	uo				

SPI Index 200 constituent stocks - alphabetically (Co-La)

SCORE	COMPANY	RIC	PRICE	LT	MT	ST	COMMENT	DATE BOUGHT	PRICE BOUGHT	PROFIT or LOSS
6%	CPH CHEM&PAPER	CPHN.S	80.00	-	-	do				
56%	CREALOGIX HLDG	CLXN.S	95.00	O	u+	u+				
100%	CS GROUP AG	CSGN.S	12.65	+	+	+	see chart			
100%	DAETWYL I	DAE.S	167.00	+	+	+	Stop 156.50.	11.09.2019	165.50	0.91%
33%	DKSH N	DKSH.S	48.56	-	O	+				
11%	DORMAKABA HOLD	DOKA.S	628.00	O	d-	dd-				
89%	DUFREY AG	DUFN.S	83.64	u+	+	+	Long-term upgrade could be delayed or even reversed if 82.60 / 81.50 is broken.			
89%	EDISUN POWER	ESUN.S	148.00	+	+	do				
61%	EFG INT N	EFGN.S	6.22	O	+	+				
100%	ELMA N	ELMN.S	424.00	+	u+	u+				
6%	EMMI N	EMMN.S	822.50	-	-	uo				
100%	EMS-CHEMIE N	EMS.N.S	609.50	u+	uu+	+				
33%	EVOLVA HOLD AG	EVE.S	0.18	-	+	d-				
78%	FEINTOOL N	FTON.S	59.70	uo	+	+				
100%	FISCHER N	FIN.S	881.50	u+	+	+	ADD to the position here and >900. Supports for stops are 876 and 864.	10.09.2019	855.50	3.04%
11%	FLUGHAFEN ZURICH	FHZN.S	176.40	do	dd-	dd-	Close to major support at 175 / 174. Lower support is at 166.			
33%	FORBO N	FORN.S	1'466.00	-	uo	+				
83%	GALENICA	GALE.S	54.35	+	+	d-				
100%	GAM N	GAMH.S	4.22	+	u+	+	Must rise above 4.90 to signal 5.70.			
22%	GAVAZZI CARLO I	GAV.S	258.00	O	-	uu+				
100%	GEBERIT N1	GEBN.S	474.60	+	+	+	Likely to rise to long-term resistance at 495.	19.08.2019	438.10	8.33%
78%	GIVAUDAN N	GIVN.S	2'757.00	+	+	+	BUY only if the resistance at 2780 is broken. Next resistance is 2860.			
100%	GLARNER KB N	GLKBN.S	31.00	+	+	uu+				
100%	GR KTBK PS	GRKP.S	1'460.00	+	+	+				
0%	GRP MINOTERIES	GMI.S	352.00	-	d-	d-				
94%	GURIT I	GUR.S	1'162.00	+	+	+				
100%	HELVETIA HLDG	HELN.S	134.60	+	+	+				
11%	HIAG IMMOBILIEN	HIAG.S	116.50	-	-	uu+				
89%	HIGHL EVNT & ENT	HLEE.S	19.90	+	+	O				
28%	HOCHDORF N	HOCN.S	65.10	-	do	+				
17%	HUBER & S N	HUBN.S	67.20	-	-	+				
17%	HYPO BK LENZB N	HBLN.S	4'480.00	-	O	d-				
67%	IDORSIA N	IDIA.S	25.04	+	+	d-				
94%	IMPLENIA N	IMP.N.S	35.24	+	+	+	Hold.	29.08.2019	32.10	9.78%
100%	INFICON N	IFCN.S	644.50	+	+	+	Hold.	10.09.2019	645.40	-0.14%
28%	INTERROLL N	INRN.S	1'848.00	-	O	+				
89%	INTERSHOP N	ISN.S	530.00	+	+	do				
67%	INVESTIS N	IREN.S	71.20	+	+	d-				
78%	IVF HARTMANN	VBSN.S	158.00	+	+	+				
100%	JULIUS BAER N	BAER.S	43.71	+	+	+	ADD to the position only if 45 is broken. Stop 42.50.	10.09.2019	43.30	0.95%
83%	JUNGFRAUBAHN N	JFN.S	153.00	+	+	dd-				
28%	KARDEX I	KARN.S	140.40	-	O	+	Breakout not confirmed. Stop 135.	11.09.2019	141.20	-0.57%
44%	KLINGELNBERG N	KLIN.S	32.20	O	uo	u+				
100%	KOMAX N	KOMN.S	204.60	u+	+	+	Sell if 191 is broken. Long-term upgrade could be delayed by the short-term correction.	10.09.2019	204.40	0.10%
0%	KTM INDUSTRIES/d	KTMI.VI	49.80	-	d-	d-				
56%	KUDELSKI	KUD.S	6.25	+	O	+				
100%	KUEHNE & NAGEL	KNIN.S	150.30	+	+	+				
28%	KUROS BIOSCIENCE	KURN.S	1.54	O	O	-				
100%	LAFARGEHOLCIM	LHN.S	48.40	u+	+	+				
17%	LALIQUE	LLQ.S	36.60	-	uo	dd-				
100%	LANDIS GYR	LANDI.S	87.10	+	+	+				
56%	LASTMINUTE ORD	LMN.S	31.00	+	do	uo				
11%	LECLANCHE N	LECN.S	1.56	O	d-	-				

SPI Index 200 constituent stocks - alphabetically (La-Se)

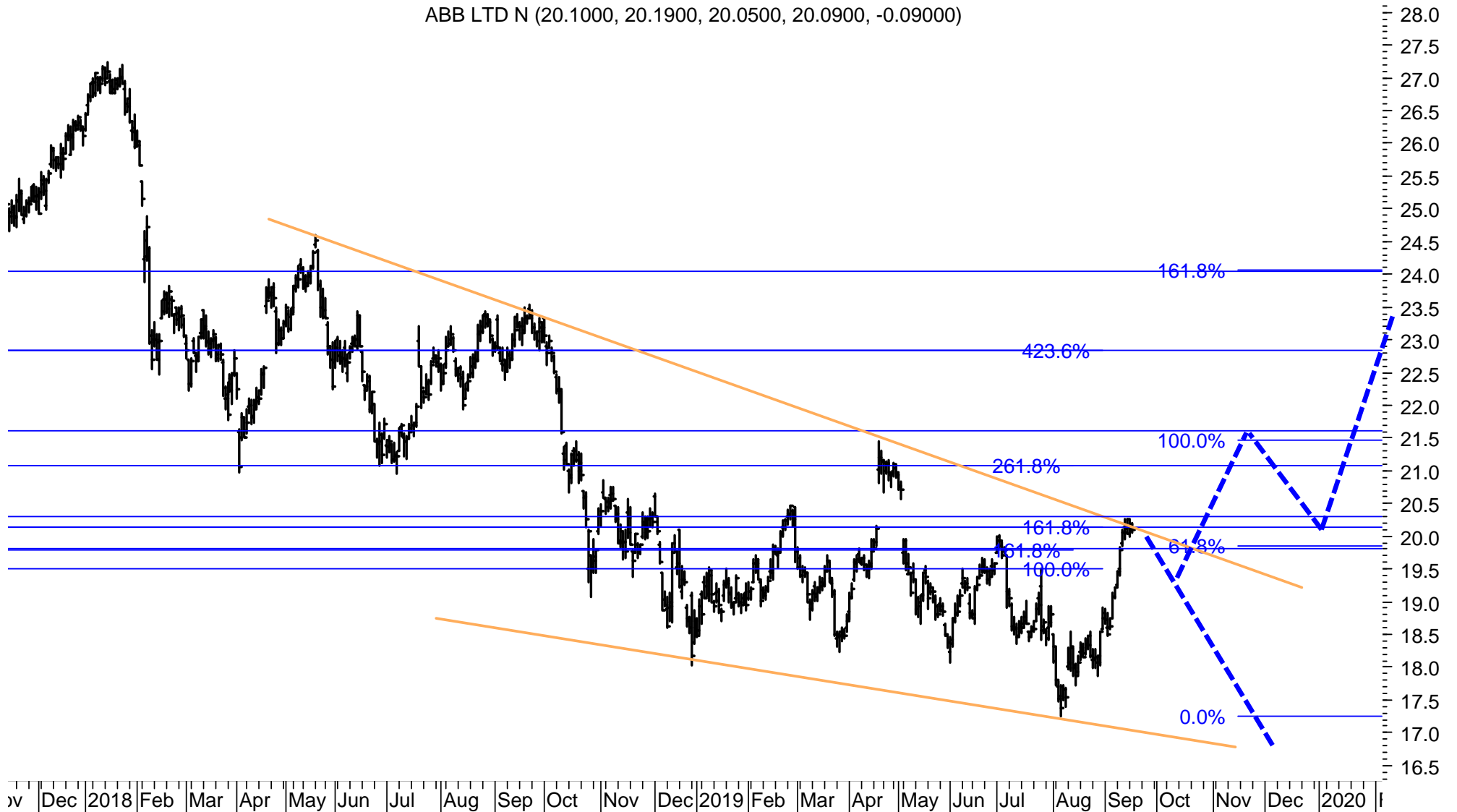
SCORE	COMPANY	RIC	PRICE	LT	MT	ST	COMMENT	DATE BOUGHT	PRICE BOUGHT	PROFIT or LOSS
11%	LEM HOLDING N	LEHN.S	1'240.00	o	d-	dd-				
67%	LEONTEQ	LEON.S	33.40	-	+	+	Downtrend could finally reverse with a rise above 34.20 / 35.30. Resistance is 38.			
72%	LIECH LANDBK	LLBN.S	62.30	o	+	+				
61%	LINDT & SP N	LISN.S	81'200.00	u+	do	do				
28%	LINDT & SP PS	LISP.S	7'330.00	+	d-	do				
94%	LOGITECH	LOGN.S	41.36	+	+	+	Will have to rise above 42 / 43 to signal 44.50, 46.50, 48.50.			
11%	LONZA GRP AG N	LONN.S	335.00	do	dd-	dd-	Sold the position with the break of 342 for a profit of 3.5%.			
17%	LUZERNER KB N	LUKN.S	416.00	-	o	dd-				
50%	MCH GROUP AG	MCHN.S	23.00	+	do	dd-				
78%	MEDACTA GROUP	MOVE.S	84.50	uo	uu+	uu+	BUY only if 89 is broken. Next resistance is 94 / 95.			
17%	MEDARTIS	MEDA.S	45.20	-	-	+				
28%	MEIER TOBLER GRO	METG.S	15.18	o	o	-				
17%	METALL ZUG	METN.S	2'090.00	-	do	dd-				
61%	MEYER BURGER N	MBTN.S	0.40	o	u+	+				
0%	MIKRON N	MIKN.S	7.32	-	-	dd-				
78%	MOBILEZONE HLD I	MOZN.S	9.76	u+	+	+				
67%	MOBIMO HLDG	MOBN.S	277.00	+	+	d-	Take profit of 5%. Entering a short-term and possibly medium-term correction.			
89%	MOLECULAR PARTNE	MOLN.S	15.20	+	+	+	Long-term resistance is at 16.40 / 16.90 and 20.			
33%	NESTLE SA	NESN.S	106.22	+	dd-	d-	see chart			
50%	NEWRON PHARMA N	NWRN.S	5.91	-	u+	uu+	BUY only if the Fibonacci resistance at 6.10 is broken. Stop 5.79.			
0%	NOVARTIS N	NOVN.S	86.39	d-	-	dd-	see chart	24.05.2019	85.55	0.98%
89%	O FUESSL I N	OFN.S	91.50	+	+	+				
28%	OBSEVA SA/d	OBSV.O	9.20	o	do	d-				
78%	OC OERLIKON CORP	OERL.S	10.28	uo	+	+				
83%	ORASCOM DEV H	ODHN.S	15.04	o	+	+	Stop 13.50.	11.06.2019	13.96	7.74%
39%	ORIOR N	ORON.S	82.50	u+	o	-				
67%	PANALPINA WELT	PWTN.S	230.00	+	do	dd-				
83%	PARGESA I	PARG.S	75.20	+	+	+				
11%	PARTNERS GROUPAG	PGHN.S	756.60	do	dd-	d-	Major sell signal to be triggered if the support range 740 / 725 is broken.			
83%	PEACH PROP	PEAN.S	33.30	+	u+	u+	Sell the position if 31 is broken. Supports are 30, 29 and 27.80.	27.06.2019	34.10	-2.35%
11%	PERFECT HOLDING	PRFN.S	0.02	o	-	dd-				
22%	PERROT DUVAL I1	PEDU.S	133.00	+	-	-				
61%	PHOENIX I	PM.S	406.00	uo	u+	+	Must rise above 418 / 428 to signal 460.			
56%	PLAZZA AG	PLANZ.S	253.00	+	do	uo				
61%	POENINA	PNHO.S	44.90	o	uu+	u+				
72%	POLYPHOR N	POLN.S	7.13	o	+	+				
6%	PRIVATE EQUITY N	PEHN.S	56.00	-	-	o				
33%	PSP CH PRPTY N	PSPN.S	121.40	+	dd-	-				
67%	RELIEF THERAPEUT	RLFB.S	0.0016	-	u+	uu+				
67%	RICHEMONT N	CFR.S	78.88	+	o	+	Entered another correction at resistance at 82 / 83. Support is 77.70 / 76.50.			
100%	RIETER N	RIEN.S	144.30	+	+	+	Bullish turnaround to be signalled if 145 / 153 is broken. Next resistance is 162, 170, 185.			
72%	ROCHE HOLDING AG	ROG.S	277.55	o	u+	u+	see chart	24.05.2019	272.10	2.00%
100%	ROMANDE ENERGIE	HREN.S	1'220.00	+	+	+	Sell the position if 1190 is broken.	10.09.2018	1230.00	-0.81%
11%	SANTHERA PHARMA	SANN.S	12.76	o	d-	dd-				
33%	SCHAFFNER N	SAHN.S	197.50	-	uo	u+				
89%	SCHINDLER N	SCHN.S	222.80	+	+	do				
89%	SCHINDLER PS	SCHP.S	225.00	+	+	do				
17%	SCHLATTER N	STRN.S	38.00	d-	o	dd-				
0%	SCHMOLZ+BICKENB	STLN.S	0.21	-	-	d-				
100%	SCHWEITER I	SWTQ.S	955.00	+	+	+				
94%	SENSIRION N	SENSI.S	39.05	+	+	+	Stop 37. Support is 34.50 or 30.	27.08.2019	37.50	4.13%
89%	SFS GROUP	SFSN.S	78.45	u+	+	+				
67%	SGS N	SGSN.S	2'445.00	o	+	do				

SPI Index 200 constituent stocks - alphabetically (Sf-Z)

SCORE	COMPANY	RIC	PRICE	LT	MT	ST	COMMENT	DATE BOUGHT	PRICE BOUGHT	PROFIT or LOSS
89%	SIEGFRIED N	SFZN.S	407.50	+	+	do	Take profit if 398 is broken. Could correct to 388 or 370.	21.08.2019	371.20	9.78%
72%	SIG COMB GRP N	SIGNC.S	12.78	+	+	d-	Take profit if 12.15 is broken. Could correct to 11.85 or 11.20.	24.07.2019	11.20	14.11%
72%	SIKA	SIKA.S	148.05	o	u+	+	Must clear 152.50 to confirm the mt upgrade. Supports are 141, 138, 130, 123.			
94%	SNB N	SNBN.S	5'670.00	+	+	+				
22%	SONOVA H AG	SOON.S	217.70	+	d-	-	Sell signal if 212 is broken. Supports are 200 or 180.			
94%	SPICE PRIV AG	SPCE.S	22.60	+	+	+				
67%	ST GALLER KB N	SGKN.S	432.00	o	+	do				
33%	STADLER RAIL	SRAIL.S	44.00	na	uo	u+	Buy signal to be triggered only if 45.20 is broken. Support is 43.40 and 42.50.			
11%	STARRAG N	STGN.S	46.60	o	d-	d-				
28%	STRAUMANN HLD N	STMN.S	797.20	dd-	do	+	Long-term support is at 785 / 775 and 760.			
100%	SULZER N	SUN.S	100.60	u+	+	+				
100%	SUNRISE N	SRCG.S	76.70	u+	u+	+	Add above 77.50. Sell the position if 74.40 is broken.	20.08.2019	78.25	-1.98%
72%	SWATCH GROUP I	UHR.S	274.50	+	+	+				
89%	SWATCH GROUP N	UHRN.S	52.00	u+	+	+				
50%	SWISS FIN&PROP	SFPN.S	94.00	+	o	-				
83%	SWISS LIFE HLDG	SLHN.S	480.70	+	+	+				
83%	SWISS PRIME SITE	SPSN.S	95.60	+	+	-	TAKE PROFIT of 16%. Entering a medium-term correction.	09.01.2019	82.20	16.30%
100%	SWISS RE N	SRENH.S	101.15	+	+	+	Testing the previous high at 103/104. Waiting for a short-term correction.			
72%	SWISSCOM N	SCMN.S	486.00	+	u+	uo				
89%	SWISSQUOTE GRP N	SQN.S	42.04	+	+	+				
17%	TAMEDIA N	TAMN.S	98.70	o	-	uo				
11%	TECAN HLD N	TECN.S	237.40	o	-	dd-				
0%	TEMENOS N	TEMN.S	164.85	d-	dd-	dd-				
17%	THURGAUER KB PS	TKBP.S	106.50	-	o	-				
50%	TITL BN BERG N	TIBN.S	331.00	-	uu+	uu+				
28%	TORNOS HOLDING N	TOHN.S	7.00	uo	-	+				
89%	U-BLOX N	UBXN.S	76.70	u+	+	+	Long-term upgrade could be delayed or even reversed if 70.50 is broken.	10.09.2019	74.20	3.37%
89%	UBS GROUP N	UBSG.S	11.32	u+	+	+	Entering a short-term correction from major resistance at 11.50.			
0%	VALARTIS GROUP	VLRT.S	10.20	-	-	-				
17%	VALIANT N	VATN.S	100.80	d-	do	dd-				
83%	VALORA N	VALN.S	270.50	+	+	d-				
17%	VARIA US PROP	VARN.S	36.30	d-	o	dd-				
100%	VAT GROUP N	VACN.S	131.90	+	+	+	Stop 125.	10.09.2019	130.70	0.92%
100%	VAUDOISE VERS N	VAHN.S	532.00	+	+	+				
94%	VETROPACK I	VET.S	2'645.00	+	+	+	Hold.	29.08.2019	2485.00	6.44%
89%	VIFOR PHARMA	VIFN.S	159.10	+	+	o	Stop 153.	11.06.2019	143.10	11.18%
6%	VILLARS N	VILN.S	760.00	-	d-	o				
6%	VON ROLL I	ROL.S	0.86	-	-	o				
100%	VONTOBEL N	VONN.S	54.15	u+	+	+	Stop 53.80.	10.09.2019	55.00	-1.55%
11%	VP BANK AG	VPBN.S	153.80	o	-	d-				
17%	VZ HOLDING N	VZN.S	292.50	-	o	-				
28%	WALLISER KTBK	WKB.S	114.50	-	o	uu+				
72%	WARTECK N	WARN.S	1'960.00	+	+	uo				
78%	WISEKEY N	WIHN.S	2.57	+	+	do				
100%	YPSOMED HOLDING	YPSN.S	127.80	u+	u+	u+				
100%	ZEHNDER I	ZEHN.S	38.25	+	+	+				
22%	ZUEBLIN N	ZUBN.S	26.40	do	d-	dd-				
94%	ZUG ESTATE HLD	ZUGN.S	2'040.00	+	+	+				
0%	ZUGER KB I	ZG.S	6'080.00	-	-	-				
11%	ZUR ROSE GROUP N	ROSEG.S	88.40	-	-	uu+				
100%	ZURICH INSURANCE	ZURN.S	375.50	+	+	+	Likely to rise to 410 or 440.	10.09.2019	374.00	0.40%
6%	ZWAHLEN & MAYR	ZWM.S	250.00	-	-	o				

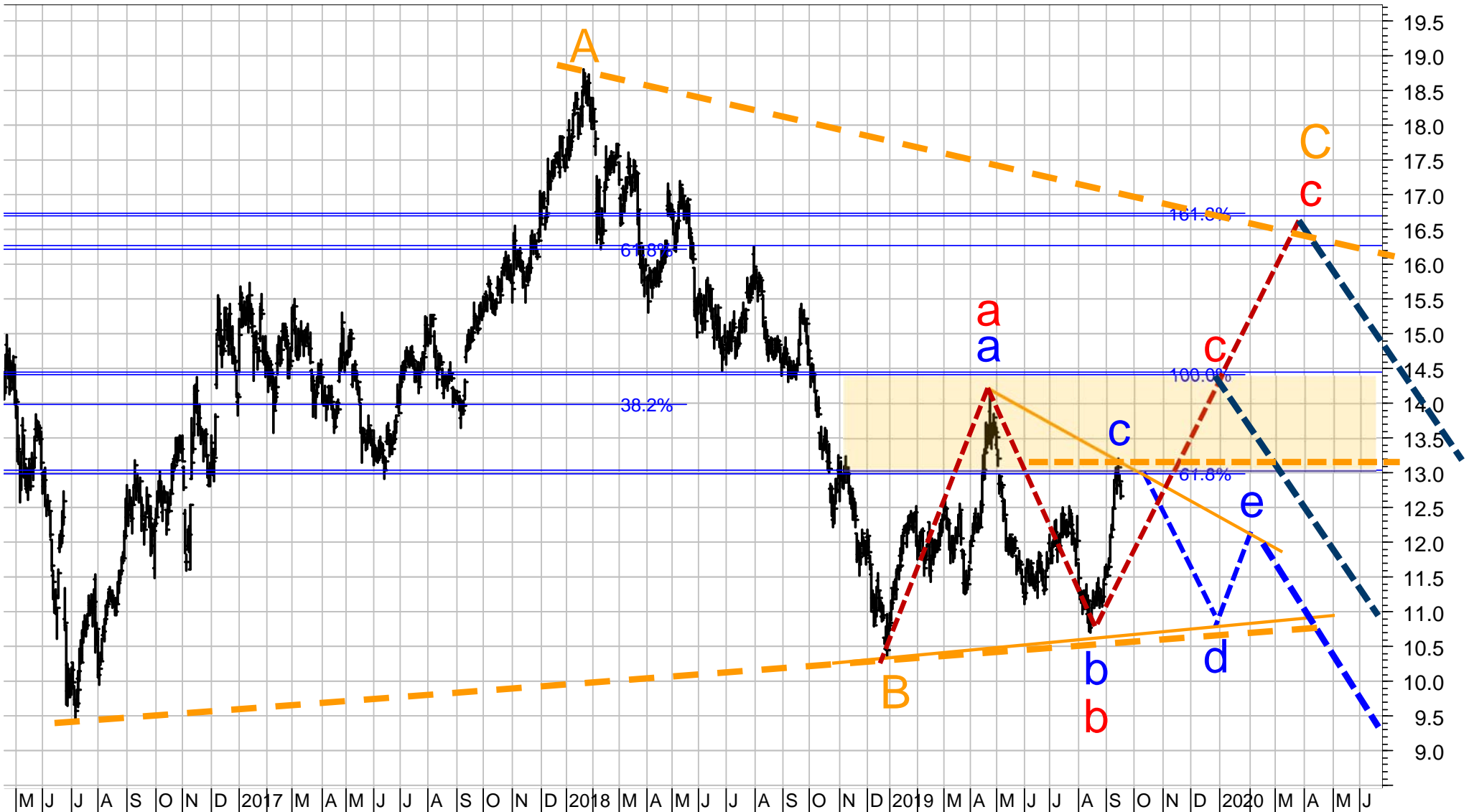
ABB – daily chart

ABB must rise above 19.80 / 20.40 to signal 21 / 21.50 or 23 / 24.



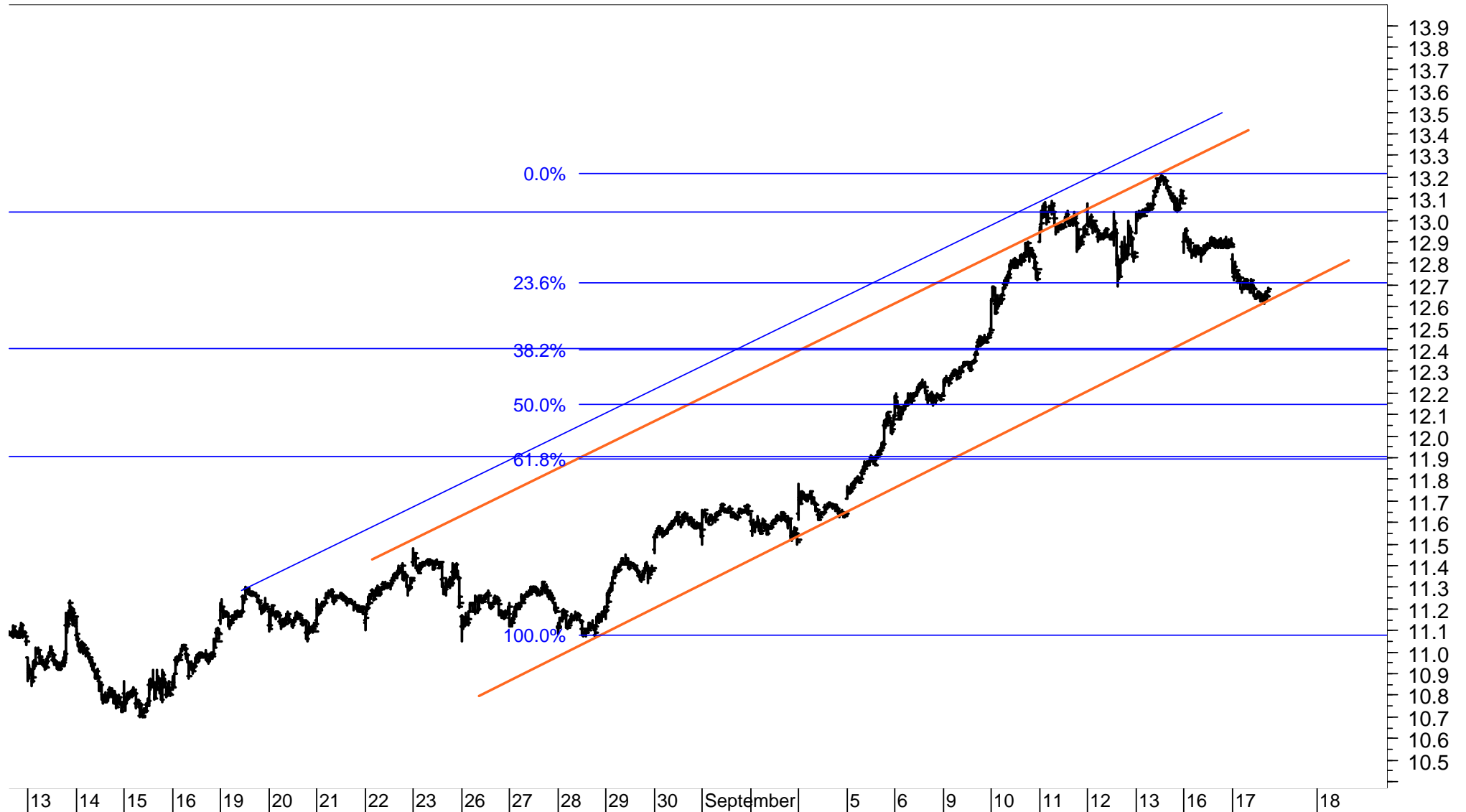
CS GROUP – daily chart

CSG is again correcting from below the major resistance, which I had located at around 13.10. As long as 13.25 is not clearly broken CSG could continue to form the TRIANGLE a-b-c-d-e (blue) and resume the downtrend. The FLAT a-b-c (red) has major resistance at 14.50 (c=1 x a) or 16.70 (c=1.618 x a).



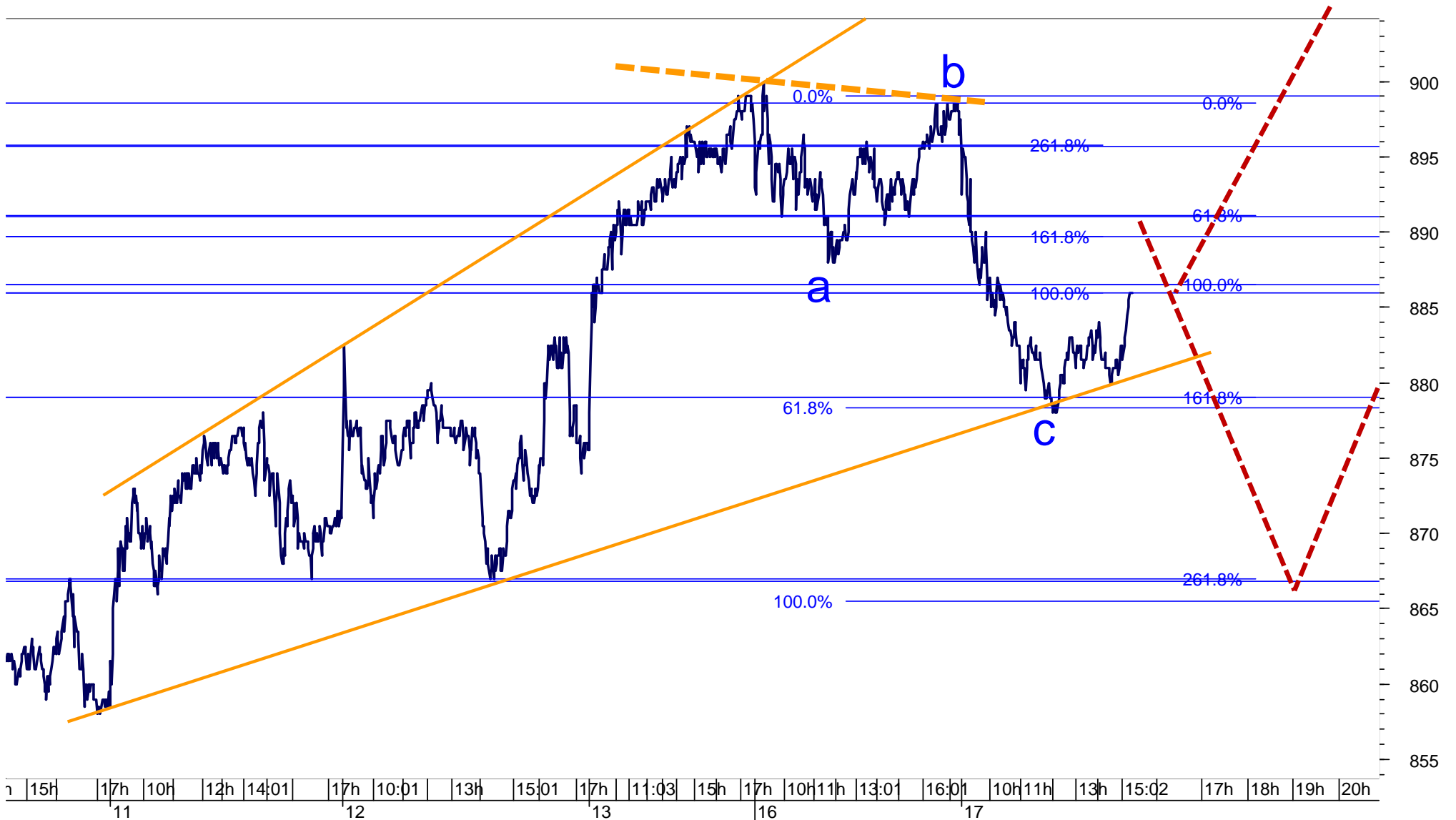
CS GROUP – 10-minute chart

The 10-minute chart shows the correction, which took over following the missed test of the resistance 13 / 13.20. Short-term supports are 12.40, 11.90 and 11 / 10.50.



GEORG FISCHER – 1-minute line chart

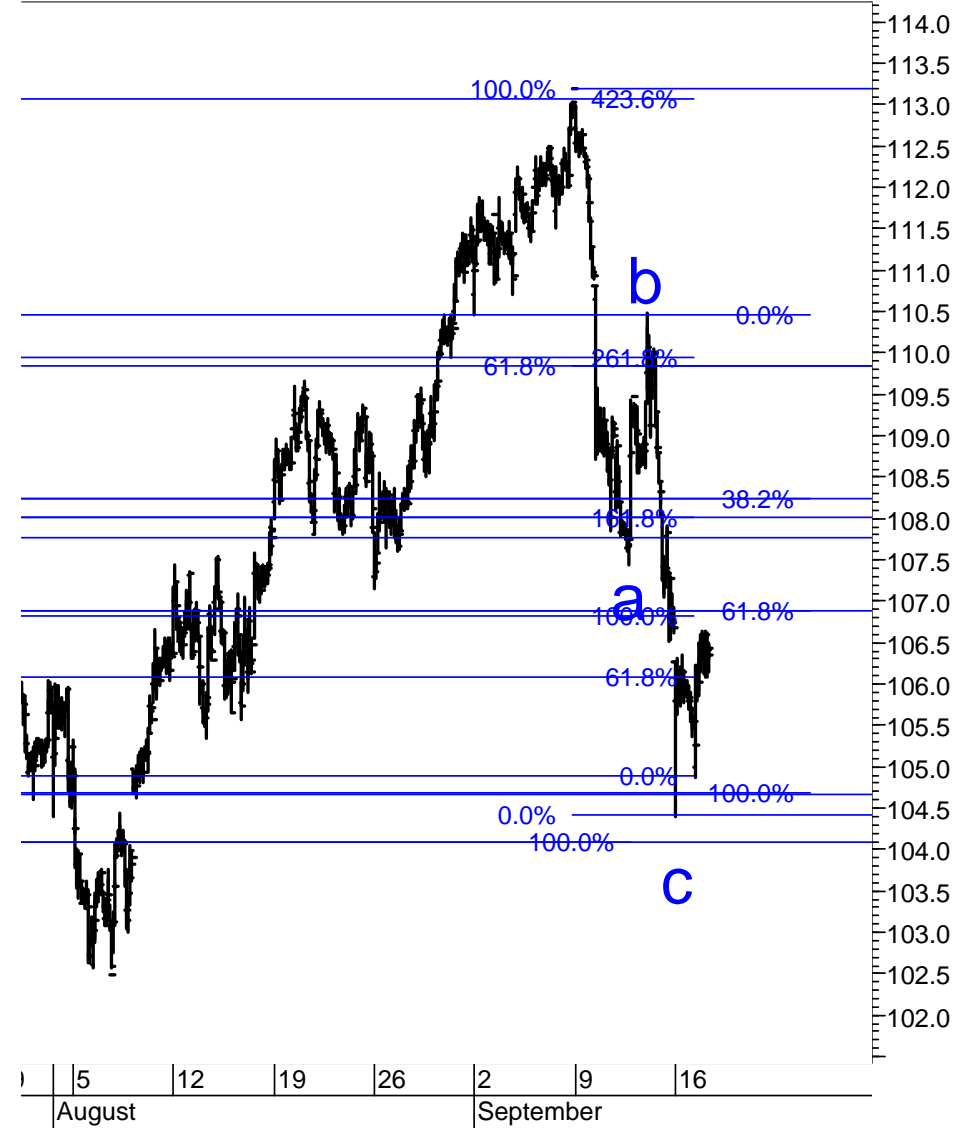
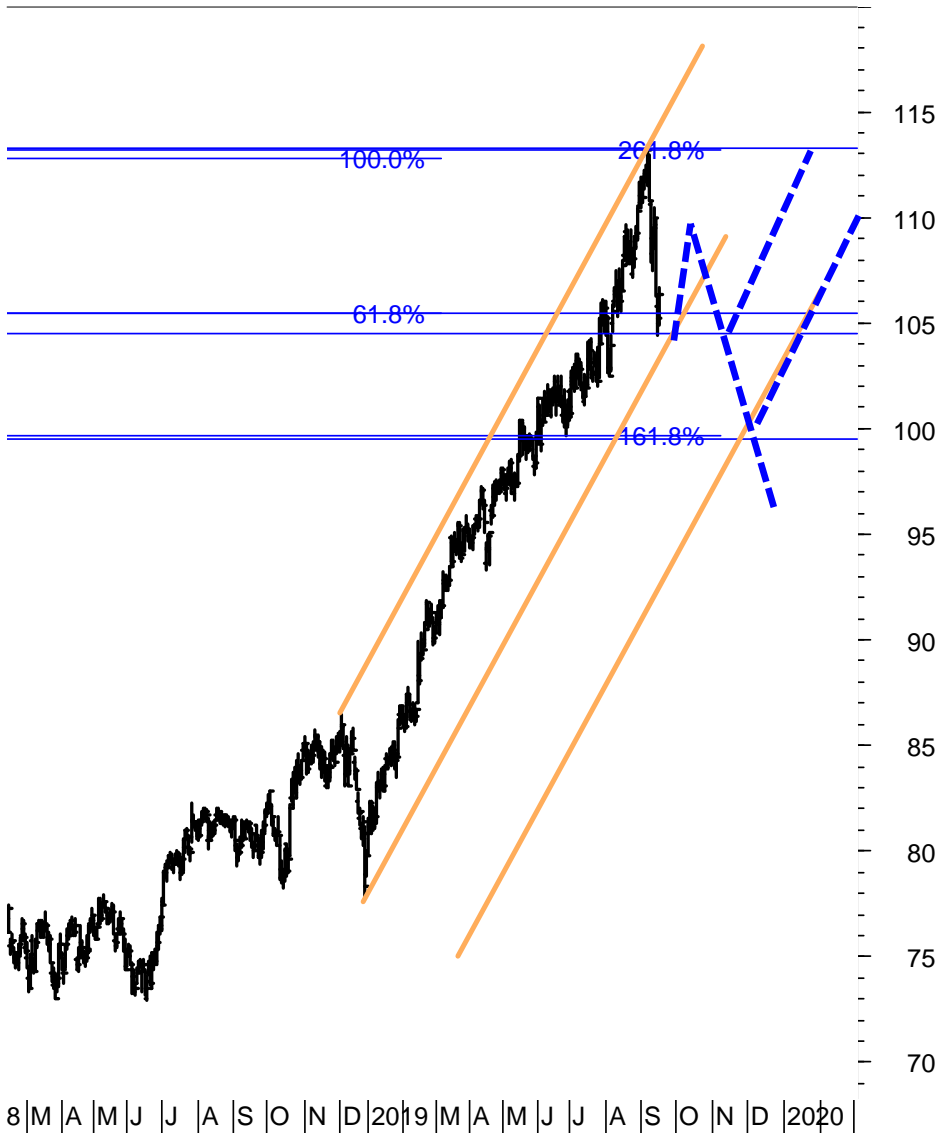
Fischer has formed an Elliott Wave FLAT a-b-c (blue) in which Wave c was 1.618 times the length of Wave a. The nature of this pattern is corrective and suggests that most likely the high of September will be surpassed. If a second correction (ZigZag) is added to the FLAT and the present rally is an intervening X, the stock could break 878 and correct to 865. Resistance is at 887, 891, 896 and 899.



NESTLE – daily chart (left) and 30-minute chart (right)

Last week I stated: “I am looking for an extended period of corrective action with supports at 105 and 99.”

The present correction found support at 105/ 104 and could be Wave 4 within the uptrend from early 2018. The chart at right can still be counted as a corrective a-b-c. However, a break of 104 would extend the downtrend to a five wave structure and imply that Nestlé could see a deeper retracement to the uptrend from December 2018.



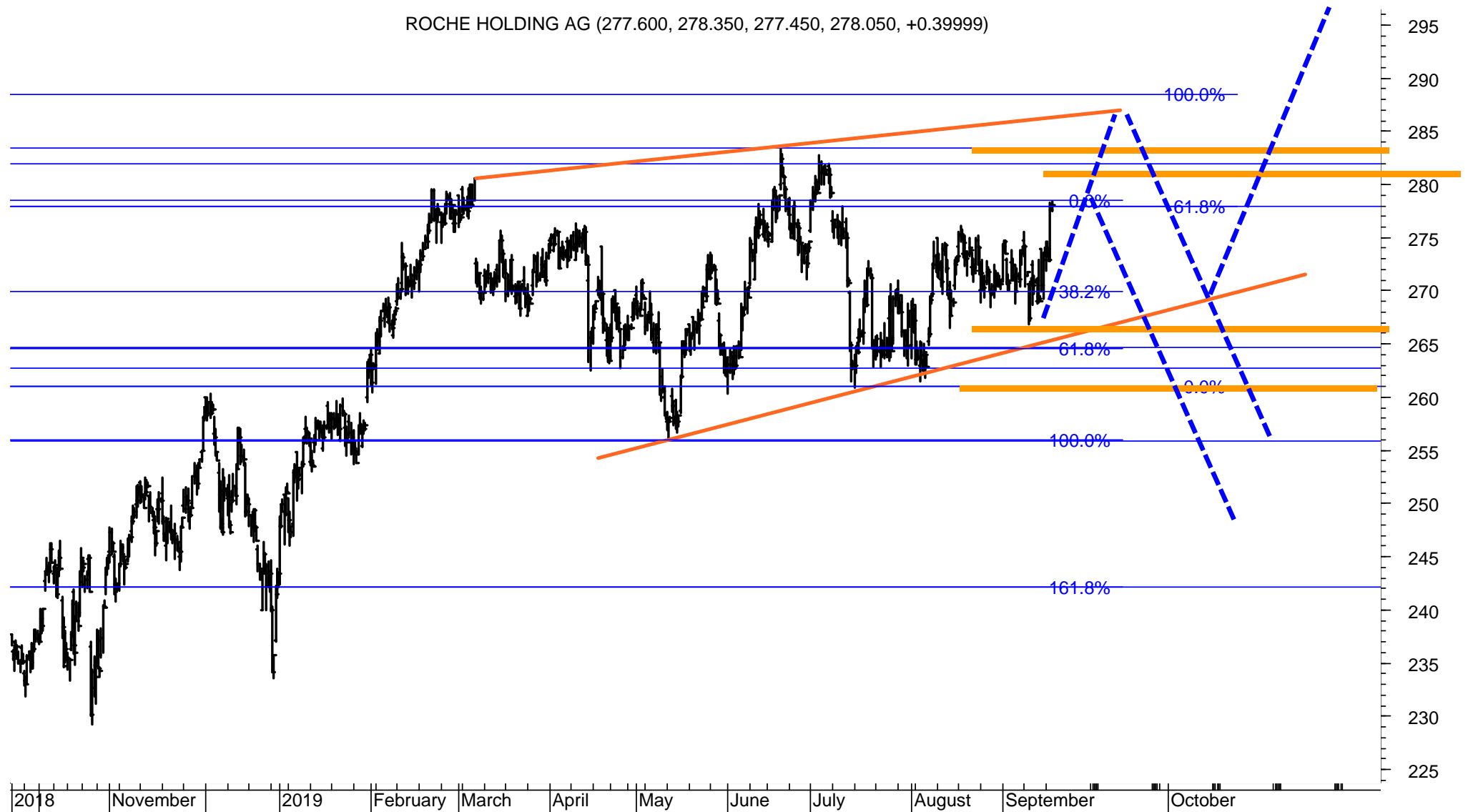
NOVARTIS – 240-minute chart

Novartis will trigger a medium-term sell signal if it breaks the support range at 86 /83.50.
Next supports are 80 and 72.



ROCHE GS – 240-minute chart

Roche finally broke above the resistance at 275 / 277.
It is likely to test 282 / 288 next.
A major decline would still be signaled if 266 and 261 is broken.
Next major support is at 256 or 242.



STOXX 200 stocks – listed according to the Score (range from 100% to 0%, 40%-60% is neutral)

100%	A P MOLLER MAERSK B	MAERSKb.CO
100%	ALLIANZ (XET)	ALVG.DE
100%	ANHEUSER-BUSCH INBEV	ABI.BR
100%	ASML HOLDING	ASML.AS
100%	ASSICURAZIONI GENERALI	GASI.MI
100%	ATLAS COPCO A	ATCOa.ST
100%	BASF (XET)	BASFn.DE
100%	BNP PARIBAS	BNPP.PA
100%	BOLIDEN ORD SHS	BOL.ST
100%	COVESTRO (XET)	iCOV.DE
100%	DEUTSCHE BANK (XET)	DBGn.DE
100%	DNB	DNB.OL
100%	ELECTROLUX B	ELUXb.ST
100%	EPIROC A	EPiRa.ST
100%	HEIDELBERGCEMENT (XET)	HEIG.DE
100%	HEXAGON B	HEXAb.ST
100%	HEXPOL B	HPOLb.ST
100%	HUSQVARNA B	HUSQb.ST
100%	INDUSTRIVARDEN A	INDUa.ST
100%	INFINEON TECHS. (XET)	IFXGn.DE
100%	INTESA SANPAOLO	ISP.MI
100%	KBC GROUP	KBC.BR
100%	LOOMIS B	LOOMb.ST
100%	MUENCHENER RUCK. (XET)	MUVGn.DE
100%	NORSK HYDRO	NHY.OL
100%	ORANGE	ORAN.PA
100%	PEUGEOT	PEUP.PA
100%	SANDVIK	SAND.ST
100%	SCHNEIDER ELECTRIC	SCHN.PA
100%	SKF B	SKfb.ST
100%	SOCIETE GENERALE	SOGN.PA
100%	SUBSEA 7	SUBC.OL
100%	TESCO	TSCO.L
100%	TRELLEBORG B	TRElb.ST
100%	VOLKSWAGEN PREF. (XET)	VOVG_p.DE
100%	VOLVO B	VOLVb.ST
94%	BAYER (XET)	BAYGn.DE
94%	CRH (DUB)	CRH.I
94%	DEUTSCHE BOERSE (XET)	DBiGn.DE
94%	DEUTSCHE POST (XET)	DPWGn.DE
94%	FIAT CHRYSLER AUTOS.	FCHA.MI
94%	GJENSIDIGE FORSIKRING	GJFS.OL
94%	INVESTOR B	INVEb.ST
94%	PANDORA	PNDORA.CO
94%	PHILIPS ELTN.KONINKLIJKE	PHG.AS
94%	SAFRAN	SAF.PA
94%	SVENSKA CELLULOSA AKTIEB	SCAb.ST
94%	THYSSENKRUPP (XET)	TKAG.DE
94%	VODAFONE GROUP	VOD.L
89%	ABN AMRO BANK	ABNd.AS

89%	AKER BP	AKERBP.OL
89%	ARCELORMITTAL	MT.AS
89%	AXA	AXAF.PA
89%	BANK POLSKA KASA OPIEKI	PEO.WA
89%	BARCLAYS	BARC.L
89%	BBV.ARGENTARIA	BBVA.MC
89%	BMW (XET)	BMWG.DE
89%	CONTINENTAL (XET)	CONG.DE
89%	DAIMLER (XET)	DAiGn.DE
89%	EQUINOR	EQNR.OL
89%	HENKEL PREF. (XET)	HNKG.DE
89%	ING GROEP	INGA.AS
89%	INNOGY (XET)	IGY.DE
89%	KINNEVIK B	KINVb.ST
89%	KONINKLIJKE AHOLD DELHA	AD.AS
89%	LUNDIN PETROLEUM	LUPE.ST
89%	MERCK KGAA (XET)	MRCG.DE
89%	REPSOL YPF	REP.MC
89%	SKANDINAVISKA ENSKILDA B	SEBa.ST
89%	SKANSKA B	SKAb.ST
89%	TGS-NOPEC GEOPHS.	TGS.OL
89%	WFD UNIBAIL RODAMCO STA	URW.AS
83%	ASSA ABLOY B	ASSAb.ST
83%	CARLSBERG B	CARLb.CO
83%	ESSILORLUXOTTICA	ESLX.PA
83%	GENMAB	GEN.CO
83%	PKO BANK	PKO.WA
83%	RWE (XET)	RWEG.DE
83%	SCHIBSTED A	SBSTA.OL
83%	STANDARD CHARTERED	STAN.L
83%	VINCI	SGEF.PA
78%	AIR LIQUIDE	AIRP.PA
78%	ALFA LAVAL	ALFA.ST
78%	CD PROJECT RED	CDR.WA
78%	DANSKE BANK	DANSKE.CO
78%	ENI	ENI.MI
78%	FRESENIUS (XET)	FREG.DE
78%	GLENCORE	GLEN.L
78%	LLOYDS BANKING GROUP	LLOY.L
78%	NICHELIN	MICP.PA
78%	NOKIA	NOKIA.HE
78%	NORDEA BANK (OME)	NDASE.ST
78%	PLKNC.NAFTOWY ORLEN	PKN.WA
78%	SAAB B	SAABb.ST
78%	SANOFI	SASy.PA
78%	SIEMENS (XET)	SIEGn.DE
78%	SVENSKA HANDELSBANKEN A	SHBa.ST
78%	SWEDBANK A	SWEDa.ST
78%	THALES	TCFP.PA
78%	TOTAL	TOTf.PA

72%	IMPERIAL BRANDS	IMB.L
67%	AMBU B	AMBUB.CO
67%	BP	BP.L
67%	DANONE	DANO.PA
67%	DSV 'B'	DSV.CO
67%	ENEL	ENEI.MI
67%	IBERDROLA	IBE.MC
67%	JYSK BANK	JYSK.CO
67%	ROYAL BANK OF SCTL.GP.	RBS.L
67%	TELEFONICA	TEF.MC
67%	TELIA COMPANY	TELIA.ST
67%	WIRECARD (XET)	WDIG.DE
61%	ASSOCIATED BRIT.FOODS	ABF.L
61%	BANCO SANTANDER	SAN.MC
61%	DEUTSCHE LUFTHANSA (XET)	LHAG.DE
61%	DEUTSCHE TELEKOM (XET)	DTEGn.DE
61%	FRESENIUS MED.CARE (XET)	FMEG.DE
56%	ENDESA	ELE.MC
56%	LINDE (XET)	LINI.DE
56%	LVMH	LVMH.PA
56%	SWEDISH MATCH	SWMA.ST
56%	TELE2 B	TEL2b.ST
56%	UNILEVER	UNA.AS
50%	ACCOR	ACCP.PA
50%	BT GROUP	BT.L
50%	ENGIE	ENGIE.PA
50%	HERMES INTL.	HRMS.PA
50%	ICA GRUPPEN	ICAA.ST
50%	KONE 'B'	KNEBV.HE
50%	ORSTED	ORSTED.CO
50%	PERNOD-RICARD	PERP.PA
50%	POLISH OIL AND GAS	PGN.WA
50%	SANTANDER BANK POLSKA	SPL1.WA
50%	STOREBRAND	STB.OL
50%	TELENOR	TEL.OL
50%	VESTAS WINDSYSTEMS	VWS.CO
44%	ANGLO AMERICAN	AAL.L
44%	HSBC HOLDINGS	HSBA.L
44%	ISS	ISS.CO
44%	NOVOZYMES B	NZYMB.CO
44%	PRUDENTIAL	PRU.L
44%	RIO TINTO	RIO.L
44%	YARA INTERNATIONAL	YAR.OL
39%	ELEKTA B	EKTab.ST
39%	HEINEKEN	HEIN.AS
39%	VIVENDI	VIV.PA
33%	BEIERSDORF (XET)	BEIG.DE
33%	BHP GROUP	BHPB.L
33%	COMPASS GROUP	CPG.L
33%	E ON N (XET)	EONGn.DE

33%	GETINGE B	GETIb.ST
33%	INDITEX	ITX.MC
33%	KERING	KRTP.PA
33%	KGHM	KGH.WA
33%	KINDRED GROUP SDR	KINDSdb.ST
33%	ORKLA	ORK.OL
33%	ROYAL DUTCH SHELL A	RDSa.AS
33%	SAMPO 'A'	SAMPO.HE
28%	ADIDAS (XET)	ADiGn.DE
28%	DOMETIC GROUP	DOMETIC.ST
28%	SECURITAS B	SECUB.ST
22%	AAK	AAK.ST
22%	ASTRAZENECA	AZN.L
22%	CASTELLUM	CAST.ST
22%	CHRISTIAN DIOR	DIOR.PA
22%	COLOPLAST B	COLOb.CO
22%	FERRARI (MIL)	RACE.MI
22%	NOVO NORDISK 'B'	NOVOb.CO
22%	UNILEVER (UK)	ULVR.L
17%	BRITISH AMERICAN TOBACC	BATS.L
17%	CHRISTIAN HANSEN HOLDING	CHRH.CO
17%	DASSAULT SYSTEMES	DAST.PA
17%	EDF	EDF.PA
17%	L'OREAL	OREP.PA
17%	NATURGY ENERGY	NTGY.MC
17%	NIBE INDUSTRIER B	NIBEb.ST
17%	PZU GROUP	PZU.WA
17%	SALMAR	SALM.OL
17%	SIMCORP	SIM.CO
17%	VONOVIA (XET)	VNAn.DE
11%	AENA SME	AENA.MC
11%	AIRBUS	AIR.PA
11%	ERICSSON B	ERICb.ST
11%	ESSITY B	ESSITYb.ST
11%	FABEGE	FABG.ST
11%	FASTIGHETS BALDER B	BALDb.ST
11%	GLAXOSMITHKLINE	GSK.L
11%	GN STORE NORD	GN.CO
11%	HEINEKEN HOLDING	HEIO.AS
11%	RELX	REL.L
11%	SAP (XET)	SAPG.DE
6%	NESTE	NESTE.HE
6%	SWEDISH ORPHAN BIVITRU	SOBIV.ST
0%	ADYEN	ADYEN.AS
0%	AMADEUS IT GROUP	AMA.MC
0%	DIAGEO	DGE.L
0%	NATIONAL GRID	NG.L
0%	RECKITT BENCKISER GROUP	RB.L
0%	SIEMENS (XET) HEALTHINEER	SHLG.DE
0%	TRYG	TRYG.CO

STOXX 200 stocks – listed alphabetically (A-Infineon)

SCORE	COMPANY	RIC	PRICE	LT	MT	ST
100%	A P MOLLER MAERSK B	MAERSKb.CO	8'026.00	+	+	+
22%	AAK	AAK.ST	179.80	+	d-	d-
89%	ABN AMRO BANK	ABNd.AS	18.66	uu+	+	+
50%	ACCOR	ACCP.PA	38.85	+	do	dd-
28%	ADIDAS (XET)	ADSGn.DE	268.50	+	dd-	do
0%	ADYEN	ADYEN.AS	620.40	-	-	d-
11%	AENA SME	AENA.MC	161.30	o	-	dd-
78%	AIR LIQUIDE	AIRP.PA	126.05	+	o	uo
11%	AIRBUS	AIR.PA	121.24	do	d-	dd-
89%	AKER BP	AKERBP.OL	274.50	u+	+	+
78%	ALFA LAVAL	ALFA.ST	198.00	uo	+	+
100%	ALLIANZ (XET)	ALVG.DE	210.30	+	u+	+
0%	AMADEUS IT GROUP	AMA.MC	66.18	-	-	dd-
67%	AMBU B	AMBUb.CO	114.30	o	+	do
44%	ANGLO AMERICAN	AAL.L	1'936.40	uo	o	+
100%	ANHEUSER-BUSCH INBEV	ABI.BR	86.98	+	+	+
89%	ARCELORMITTAL	MT.AS	15.24	u+	+	+
100%	ASML HOLDING	ASML.AS	223.85	+	+	+
83%	ASSA ABLOY B	ASSAb.ST	215.30	+	o	+
100%	ASSICURAZIONI GENERALI	GASI.MI	17.38	+	u+	+
61%	ASSOCIATED BRIT.FOODS	ABF.L	2'333.00	o	uo	+
22%	ASTRAZENECA	AZN.L	6'793.00	+	d-	-
100%	ATLAS COPCO A	ATCOa.ST	316.10	+	+	+
89%	AXA	AXAF.PA	22.59	u+	u+	+
61%	BANCO SANTANDER	SAN.MC	3.77	o	u+	+
89%	BANK POLSKA KASA OPIEKI	PEO.WA	107.00	o	+	+
89%	BARCLAYS	BARC.L	153.48	uu+	u+	+
100%	BASF (XET)	BASFn.DE	65.67	+	+	+
94%	BAYER (XET)	BAYGn.DE	67.87	+	+	o
89%	BBV.ARGENTARIA	BBVA.MC	4.80	u+	+	+
33%	BEIERSDORF (XET)	BEIG.DE	107.90	+	dd-	-
33%	BHP GROUP	BHPB.L	1'824.20	-	uo	+
89%	BMW (XET)	BMWG.DE	65.10	uo	+	+
100%	BNP PARIBAS	BNPP.PA	44.59	+	+	+
100%	BOLIDEN ORD SHS	BOL.ST	253.30	+	+	+
67%	BP	BP.L	524.60	-	uu+	+
17%	BRITISH AMERICAN TOBACCO	BATS.L	2'904.00	o	d-	o
50%	BT GROUP	BT.L	177.22	-	u+	+
83%	CARLSBERG B	CARLb.CO	980.00	+	+	d-
22%	CASTELLUM	CAST.ST	192.60	+	dd-	-
78%	CD PROJECT RED	CDR.WA	250.60	+	+	do
22%	CHRISTIAN DIOR	DIOR.PA	443.20	do	d-	dd-
17%	CHRISTIAN HANSEN HOLDING	CHRH.CO	561.00	-	o	dd-
22%	COLOPLAST B	COLOb.CO	785.00	+	-	-
33%	COMPASS GROUP	CPG.L	1'955.50	+	d-	-
89%	CONTINENTAL (XET)	CONG.DE	124.84	+	+	+
100%	COVESTRO (XET)	1COV.DE	45.02	+	+	+
94%	CRH (DUB)	CRH.I	31.17	+	+	+
89%	DAIMLER (XET)	DAIGn.DE	48.05	u+	+	+
67%	DANONE	DANO.PA	79.54	+	do	-

SCORE	COMPANY	RIC	PRICE	LT	MT	ST
78%	DANSKE BANK	DANSKE.CO	101.30	o	+	+
17%	DASSAULT SYSTEMES	DAST.PA	128.70	-	-	uu+
100%	DEUTSCHE BANK (XET)	DBKGn.DE	7.50	+	+	+
94%	DEUTSCHE BOERSE (XET)	DB1Gn.DE	138.15	+	+	+
94%	DEUTSCHE POST (XET)	DPWGn.DE	30.88	+	+	+
61%	DEUTSCHE TELEKOM (XET)	DTEGn.DE	15.13	uo	o	o
0%	DIAGEO	DGE.L	3'236.50	dd-	-	-
100%	DNB	DNB.OL	160.55	uu+	+	+
28%	DOMETIC GROUP	DOMETIC.ST	81.62	o	-	uu+
67%	DSV 'B'	DSV.CO	654.00	+	do	dd-
33%	E ON N (XET)	EONGn.DE	8.92	-	uo	+
17%	EDF	EDF.PA	10.46	-	do	dd-
100%	ELECTROLUX B	ELUXb.ST	233.80	u+	u+	+
39%	ELEKTA B	EKTab.ST	128.00	u+	-	u+
56%	ENDESA	ELE.MC	23.28	do	do	d-
67%	ENEL	ENEL.MI	6.48	+	do	d-
50%	ENGIE	ENGIE.PA	13.62	u+	uo	-
78%	ENI	ENI.MI	14.31	uo	+	+
100%	EPIROC A	EPIRa.ST	109.80	+	+	u+
89%	EQUINOR	EQNR.OL	181.90	u+	+	+
11%	ERICSSON B	ERICb.ST	77.08	-	-	u+
83%	ESSILORLUXOTTICA	ESLX.PA	130.60	+	+	d-
11%	ESSITY B	ESSITYb.ST	279.20	do	-	-
11%	FABEGE	FABG.ST	147.50	do	-	-
11%	FASTIGHETS BALDER B	BALDb.ST	324.40	do	d-	-
22%	FERRARI (MIL)	RACE.MI	137.20	+	d-	dd-
94%	FIAT CHRYSLER AUTOS.	FCHA.MI	12.58	+	+	+
78%	FRESENIUS (XET)	FREG.DE	45.42	o	+	u+
61%	FRESENIUS MED.CARE (XET)	FMEG.DE	63.12	o	+	+
83%	GENMAB	GEN.CO	1'377.50	+	+	d-
33%	GETINGE B	GETIb.ST	134.75	+	-	uu+
94%	GJENSIDIGE FORSIKRING	GJFS.OL	180.05	+	+	+
11%	GLAXOSMITHKLINE	GSK.L	1'627.20	do	d-	-
78%	GLENORE	GLEN.L	256.25	uo	+	+
11%	GN STORE NORD	GN.CO	286.60	-	-	u+
100%	HEIDELBERGCEMENT (XET)	HEIG.DE	67.88	+	+	+
39%	HEINEKEN	HEIN.AS	96.10	+	uo	d-
11%	HEINEKEN HOLDING	HEIO.AS	89.10	o	-	d-
89%	HENKEL PREF. (XET)	HNKG.DE	92.96	+	+	do
50%	HERMES INTL.	HRMS.PA	625.00	+	do	dd-
100%	HEXAGON B	HEXAb.ST	497.70	uu+	uu+	+
100%	HXPOL B	HPOLb.ST	79.95	+	+	+
44%	HSBC HOLDINGS	HSBA.L	618.60	uo	uo	+
100%	HUSQVARNA B	HUSQb.ST	82.60	u+	uu+	+
67%	IBERDROLA	IBE.MC	9.16	+	+	-
50%	ICA GRUPPEN	ICAA.ST	451.00	+	do	-
72%	IMPERIAL BRANDS	IMB.L	2'157.50	o	+	do
33%	INDITEX	ITX.MC	26.56	+	dd-	dd-
100%	INDUSTRIVARDEN A	INDUa.ST	222.80	+	+	+
100%	INFINEON TECHS. (XET)	IFXGn.DE	18.51	+	+	+

STOXX 200 stocks – listed alphabetically (ING-Z)

SCORE	COMPANY	RIC	PRICE	LT	MT	ST
89%	ING GROEP	INGA.AS	9.68	u+	+	+
89%	INNOGY (XET)	IGY.DE	44.85	+	+	o
100%	INTESA SANPAOLO	ISP.MI	2.14	+	+	+
94%	INVESTOR B	INVEb.ST	467.30	+	+	+
44%	ISS	ISS.CO	175.50	-	o	+
67%	JYSKE BANK	JYSK.CO	210.70	-	+	+
100%	KBC GROUP	KBC.BR	60.34	+	+	+
33%	KERING	PRTP.PA	463.25	-	uo	+
33%	KGHM	KGH.WA	83.14	-	uo	+
33%	KINDRED GROUP SDR	KINDsdb.ST	59.44	-	o	+
89%	KINNEVIK B	KINVb.ST	271.30	+	+	do
50%	KONE 'B'	KNEBV.HE	52.00	+	do	dd-
89%	KONINKLIJKE AHOLD DELHA	AD.AS	22.61	+	+	+
56%	LINDE (XET)	LINI.DE	171.75	u+	uo	u+
78%	LLOYDS BANKING GROUP	LLOY.L	54.12	uo	u+	u+
100%	LOOMIS B	LOOMB.ST	339.20	+	+	+
17%	L'OREAL	OREP.PA	242.10	dd-	do	dd-
61%	DEUTSCHE LUFTHANSA (XET)	LHAG.DE	14.52	-	+	+
89%	LUNDIN PETROLEUM	LUPE.ST	326.70	+	+	+
56%	LVMH	LVMH.PA	367.10	+	do	do
78%	MICHELIN	MICP.PA	103.00	o	+	+
89%	MERCK KGAA (XET)	MRCG.DE	99.50	+	+	u+
100%	MUENCHENER RUCK. (XET)	MUVGn.DE	227.20	+	+	+
0%	NATIONAL GRID	NG.L	832.90	-	-	-
17%	NATURGY ENERGY	NTGY.MC	23.21	-	uo	-
6%	NESTE	NESTE.HE	28.22	-	-	o
17%	NIBE INDUSTRIER B	NIBEb.ST	125.30	-	-	+
78%	NOKIA	NOKIA.HE	4.64	uo	u+	+
78%	NORDEA BANK (OME)	NDASE.ST	70.40	o	+	+
100%	NORSK HYDRO	NHY.OL	33.87	+	+	+
22%	NOVO NORDISK 'B'	NOVOb.CO	334.00	do	dd-	-
44%	NOVOZYMES B	NZYMb.CO	293.30	-	o	+
100%	ORANGE	ORAN.PA	13.91	uu+	u+	uu+
33%	ORKLA	ORK.OL	78.40	+	dd-	-
50%	ORSTED	ORSTED.CO	643.40	+	do	-
94%	PANDORA	PNDORA.CO	300.70	+	+	do
50%	PERNOD-RICARD	PERP.PA	162.30	+	do	d-
100%	PEUGEOT	PEUP.PA	23.95	+	+	+
94%	PHILIPS ELTN.KONINKLIJKE	PHG.AS	43.12	+	+	o
83%	PKO BANK	PKO.WA	41.75	+	+	+
78%	PLKNC.NAFTOWY ORLEN	PKN.WA	94.00	uo	uu+	+
50%	POLISH OIL AND GAS	PGN.WA	5.10	-	uu+	+
44%	PRUDENTIAL	PRU.L	1'480.00	uo	uo	+
17%	PZU GROUP	PZU.WA	38.22	-	-	+
0%	RECKITT BENCKISER GROUP	RB.L	6'220.00	d-	d-	d-
11%	RELX	REL.L	1'833.00	do	-	-
89%	REPSOL YPF	REP.MC	14.14	u+	+	+
44%	RIO TINTO	RIO.L	4'332.50	uo	o	+
67%	ROYAL BANK OF SCTL.GP.	RBS.L	207.30	-	u+	+
33%	ROYAL DUTCH SHELL A	RDSa.AS	26.33	-	uo	+

SCORE	COMPANY	RIC	PRICE	LT	MT	ST
83%	RWE (XET)	RWEG.DE	25.90	+	+	dd-
78%	SAAB B	SAABb.ST	295.60	uo	+	+
94%	SAFRAN	SAF.PA	140.20	+	+	+
17%	SALMAR	SALM.OL	405.90	d-	uo	-
33%	SAMPO 'A'	SAMPO.HE	38.13	d-	o	+
100%	SANDVIK	SAND.ST	161.00	uu+	+	+
78%	SANOFI	SASY.PA	79.09	+	+	o
50%	SANTANDER BANK POLSKA	SPL1.WA	318.40	-	uu+	+
11%	SAP (XET)	SAPG.DE	106.48	o	d-	dd-
83%	SCHIBSTED A	SBSTA.OL	269.00	+	+	o
100%	SCHNEIDER ELECTRIC	SCHN.PA	80.56	+	+	+
28%	SECURITAS B	SECUB.ST	149.30	-	o	do
78%	SIEMENS (XET)	SIEGn.DE	96.70	uo	u+	+
0%	SIEMENS (XET) HEALTHINEER	SHLG.DE	35.32	-	-	dd-
17%	SIMCORP	SIM.CO	610.00	d-	do	dd-
89%	SKANDINAVISKA ENSKILDA B	SEBa.ST	90.86	u+	+	+
89%	SKANSKA B	SKAb.ST	187.25	+	+	do
100%	SKF B	SKFb.ST	170.50	+	+	+
100%	SOCIETE GENERALE	SOGN.PA	25.72	+	+	+
83%	STANDARD CHARTERED	STAN.L	690.80	u+	u+	+
50%	STOREBRAND	STB.OL	57.46	-	u+	+
100%	SUBSEA 7	SUBC.OL	103.75	u+	+	+
94%	SVENSKA CELLULOZA AKTIEB	SCAb.ST	88.92	+	+	+
78%	SVENSKA HANDELSBANKEN A	SHBa.ST	95.12	uo	+	+
78%	SWEDBANK A	SWEDa.ST	141.30	o	+	+
56%	SWEDISH MATCH	SWMA.ST	399.90	-	+	do
6%	SWEDISH ORPHAN BIOVITRU	SOBIV.ST	159.60	-	-	uo
56%	TELE2 B	TEL2b.ST	137.25	+	o	uo
67%	TELEFONICA	TEF.MC	6.79	-	+	+
50%	TELENOR	TEL.OL	182.15	u+	uo	-
67%	TELIA COMPANY	TELIA.ST	43.11	+	do	do
100%	TESCO	TSCO.L	237.50	u+	+	+
89%	TGS-NOPEC GEOPHS.	TGS.OL	247.90	+	+	+
78%	THALES	TCFP.PA	106.65	+	+	do
94%	THYSSENKRUPP (XET)	TKAG.DE	12.89	+	+	+
78%	TOTAL	TOTF.PA	47.82	uo	+	+
100%	TRELLEBORG B	TRELB.ST	147.20	+	+	+
0%	TRYG	TRYG.CO	195.70	dd-	d-	dd-
89%	WFD UNIBAIL RODAMCO STA	URW.AS	127.00	uo	u+	uu+
22%	UNILEVER (UK)	ULVR.L	4'849.50	+	d-	-
56%	UNILEVER	UNA.AS	53.96	do	do	d-
50%	VESTAS WINDSYSTEMS	VWS.CO	546.00	-	uu+	+
83%	VINCI	SGEF.PA	97.08	+	+	d-
39%	VIVENDI	VIV.PA	25.08	o	o	-
94%	VODAFONE GROUP	VOD.L	159.06	+	+	+
100%	VOLKSWAGEN PREF. (XET)	VOWG_p.DE	157.56	+	+	+
100%	VOLVO B	VOLVb.ST	145.25	+	+	+
17%	VONOVIA (XET)	VNAn.DE	42.02	-	uo	-
67%	WIRECARD (XET)	WDIG.DE	153.65	+	+	+
44%	YARA INTERNATIONAL	YAR.OL	395.00	+	do	do

Eurostoxx 50 constituent stocks - listed to Score (left) and alphabetically (right)

100%	ANHEUSER-BUSCH INBEV
100%	ALLIANZ (XET)
100%	ASML HOLDING
100%	BASF (XET)
100%	BNP PARIBAS
100%	INTESA SANPAOLO
100%	MUENCHENER RUCK. (XET)
100%	ORANGE
100%	SCHNEIDER ELECTRIC
100%	SOCIETE GENERALE
100%	VOLKSWAGEN PREF. (XET)
94%	BAYER (XET)
94%	CRH (DUB)
94%	DEUTSCHE POST (XET)
94%	PHILIPS EL.TN.KONINKLIJKE
94%	SAFRAN
89%	AXA
89%	BBV.ARGENTARIA
89%	BMW (XET)
89%	DAIMLER (XET)
89%	ING GROEP
89%	KONINKLIJKE AHOLD DELHA
89%	WFD UNIBAIL RODAMCO STA
83%	ESSILORLUXOTTICA
83%	VINCI
78%	AIR LIQUIDE
78%	ENI
78%	FRESENIUS (XET)
78%	NOKIA
78%	SANOFI
78%	SIEMENS (XET)
78%	TOTAL
67%	DANONE
67%	ENEL
67%	IBERDROLA
67%	TELEFONICA
61%	DEUTSCHE TELEKOM (XET)
61%	BANCO SANTANDER
56%	LINDE (XET)
56%	LVMH
56%	UNILEVER
50%	ENGIE
39%	VIVENDI
33%	INDITEX
33%	KERING
28%	ADIDAS (XET)
17%	L'OREAL
11%	AIRBUS
11%	SAP (XET)
0%	AMADEUS IT GROUP

SCORE	COMPANY	RIC	PRICE	LT	MT	ST	COMMENT	DATE BOUGHT	PRICE BOUGHT	PROFIT or LOSS
100%	ANHEUSER-BUSCH INBEV	ABI.BR	86.98	+	+	+				
28%	ADIDAS (XET)	ADSGn.DE	268.50	+	dd-	do	Sell signals if 262, 252 and 235 are broken.			
11%	AIRBUS	AIR.PA	121.24	do	d-	dd-	Sell signals if the supports at 118 and 112 are broken.			
78%	AIR LIQUIDE	AIRP.PA	126.05	+	o	uo	Hold.	29.08.2019	124.30	1.41%
100%	ALLIANZ (XET)	ALVG.DE	210.30	+	u+	+	Must rise above 212.60 to signal 220 or 235.			
0%	AMADEUS IT GROUP	AMA.MC	66.18	-	-	dd-				
100%	ASML HOLDING	ASML.AS	223.85	+	+	+				
89%	AXA	AXAF.PA	22.59	u+	u+	+				
100%	BASF (XET)	BASFn.DE	65.67	+	+	+				
94%	BAYER (XET)	BAYGn.DE	67.87	+	+	o	Long-term resistance is at 71 / 72 and 77 to 82.			
89%	BBV.ARGENTARIA	BBVA.MC	4.80	u+	+	+				
89%	BMW (XET)	BMWG.DE	65.10	uo	+	+	BUY only if the resistance at 65.70 is broken. Next target is 67 or 72.			
100%	BNP PARIBAS	BNPP.PA	44.59	+	+	+	BUY only if the resistance at 45.60 is broken.			
94%	CRH (DUB)	CRH.I	31.17	+	+	+				
89%	DAIMLER (XET)	DAIGn.DE	48.05	u+	+	+	Must rise above 48.50 / 49 to signal 52.50 or 56.50.			
67%	DANONE	DANO.PA	79.54	+	do	-	Sell signals if the supports at 77, 76.20, 74.80 are broken.			
94%	DEUTSCHE POST (XET)	DPWGn.DE	30.88	+	+	+				
61%	DEUTSCHE TELEKOM (XET)	DTEGn.DE	15.13	uo	o	o				
67%	ENEL	ENEI.MI	6.48	+	do	d-	Stop 6.40.	29.08.2019	6.5550	-1.11%
50%	ENGIE	ENGIE.PA	13.62	u+	uo	-	Sell signals if 13.20 and 12.70 is broken.			
78%	ENI	ENI.MI	14.31	uo	+	+				
83%	ESSILORLUXOTTICA	ESLX.PA	130.60	+	+	d-	Turning down from long-term resistance 132 / 135.			
78%	FRESENIUS (XET)	FREG.DE	45.42	o	+	u+				
67%	IBERDROLA	IBE.MC	9.16	+	+	-	Turning down from long-term resistance and target at 9.50.			
33%	INDITEX	ITX.MC	26.56	+	dd-	dd-				
89%	ING GROEP	INGA.AS	9.68	u+	+	+	BUY signal only if 9.90 is broken. Next target 10.70.			
100%	INTESA SANPAOLO	ISP.MI	2.14	+	+	+	Add to the position. Next resistance is 2.20 / 2.25.	29.08.2019	1.9820	8.15%
78%	KERING	PRTP.PA	463.25	-	uo	+				
89%	KONINKLIJKE AHOLD DELHA	AD.AS	22.61	+	+	+				
56%	LINDE (XET)	LINI.DE	171.75	u+	uo	u+				
17%	L'OREAL	OREP.PA	242.10	dd-	do	dd-	Sell signals if 241 and 235 are broken.			
56%	LVMH	LVMH.PA	367.10	+	do	do	Sell signal if the support at 345 is broken. Lower support is 328.			
100%	MUENCHENER RUCK. (XET)	MUVGn.DE	227.20	+	+	+	Must rise above 232 to signal 236 or 245 / 248.			
78%	NOKIA	NOKIA.HE	4.64	uo	u+	+				
100%	ORANGE	ORAN.PA	13.91	uu+	u+	uu+	Breaking the resistance at 13.90. Next res is 14.15 or 14.70 / 14.80.			
94%	PHILIPS EL.TN.KONINKLIJKE	PHG.AS	43.12	+	+	o	Sell signal if 41 is broken. Support is 40 and 38.	29.08.2019	42.80	0.75%
94%	SAFRAN	SAF.PA	140.20	+	+	+				
78%	SANOFI	SASY.PA	79.09	+	+	o				
61%	BANCO SANTANDER	SAN.MC	3.77	o	u+	+				
11%	SAP (XET)	SAPG.DE	106.48	o	d-	dd-				
100%	SCHNEIDER ELECTRIC	SCHN.PA	80.56	+	+	+	Buy only if the resistance at 82 is broken.			
78%	SIEMENS (XET)	SIEGn.DE	96.70	uo	u+	+	Add to the position if 100 is broken.	29.08.2019	90.00	7.44%
100%	SOCIETE GENERALE	SOGN.PA	25.72	+	+	+	A break of 26.50 is required to signal 28.50 / 30.	10.09.2019	25.55	0.67%
67%	TELEFONICA	TEF.MC	6.79	-	+	+	Take profits if 6.65 is broken.	28.08.2019	6.18	10.01%
78%	TOTAL	TOTF.PA	47.82	uo	+	+				
89%	WFD UNIBAIL RODAMCO STA	URW.AS	127.00	uo	u+	uu+				
56%	UNILEVER	UNA.AS	53.96	do	do	d-	Sell signaled with break of 54.50. Next support / sell if 53 is broken.			
83%	VINCI	SGEF.PA	97.08	+	+	d-	Sell signals if 96 and 93 is broken.			
39%	VIVENDI	VIV.PA	25.08	o	o	-				
100%	VOLKSWAGEN PREF. (XET)	VOWG_p.DE	157.56	+	+	+	BUY signal if 159 is broken. Could rise to 170 or 190.			

S&P 200 stocks – listed according to the Score (range from 100% to 0%, 40%-60% is neutral)

100%	ALPHABET 'C'	GOOG.O
100%	AMPHENOL 'A'	APH
100%	APPLE	AAPL.O
100%	APPLIED MATS.	AMAT.O
100%	AT&T	T
100%	BANK OF AMERICA	BAC
100%	BANK OF NEW YORK M	BK
100%	BB&T	BBT
100%	BOOKING HOLDINGS	BKNG.O
100%	BRISTOL MYERS SQUIB	BMY
100%	CATERPILLAR	CAT
100%	CHARLES SCHWAB	SCHW.K
100%	CITIGROUP	C
100%	DEERE	DE
100%	DOVER	DOV
100%	EATON	ETN
100%	EMERSON ELECTRIC	EMR
100%	FEDEX	FDX
100%	GOLDMAN SACHS GP.	GS
100%	ILLINOIS TOOL WORKS	ITW
100%	INTEL	INTC.O
100%	INTERNATIONAL BUS.M	IBM
100%	JP MORGAN CHASE & C	JPM
100%	LAM RESEARCH	LRCX.O
100%	LYONDELLBASELL IND	LYB
100%	MICRON TECHNOLOGY	MU.O
100%	MORGAN STANLEY	MS
100%	NVIDIA	NVDA.O
100%	ONEOK	OKE
100%	PHILLIPS 66	PSX
100%	PNC FINL.SVS.GP.	PNC
100%	RAYTHEON 'B'	RTN
100%	SOUTHERN	SO
100%	SOUTHWEST AIRLINES	LUV
100%	SYSCO	SY
100%	TEXAS INSTRUMENTS	TXN.O
100%	UNITED PARCEL SER.'B'	UPS
100%	UNITED TECHNOLOGIE	UTX
100%	US BANCORP	USB
100%	VALERO ENERGY	VLO
100%	WELLS FARGO & CO	WFC
94%	ACTIVISION BLIZZARD	ATVI.O
94%	CELGENE	CELG.O
94%	COMCAST A	CMCSA.O
94%	DOMINION ENERGY	D
94%	ELECTRONIC ARTS	EA.O
94%	HOME DEPOT	HD
94%	QUALCOMM	QCOM.O
89%	BERKSHIRE HATHAWAY	BRKb
89%	BROADCOM	AVGO.O

89%	CHUBB	CB
89%	COGNIZANT TECH.SLT	CTSH.O
89%	CONOCOPHILLIPS	COP
89%	CVS HEALTH	CVS
89%	LOWE'S COMPANIES	LOW
89%	PUB.SER.ENTER.GP.	PEG
89%	REGENCY CENTERS	REG.O
89%	SCHLUMBERGER	SLB
89%	TARGET	TGT
89%	V F	VFC
89%	WALGREENS BOOTS AL	WBA.O
83%	ALLERGAN	AGN
83%	ALLSTATE ORD SHS	ALL
83%	AMERICAN INTL.GP.	AIG
83%	ANALOG DEVICES	ADI.O
83%	BOEING	BA
83%	CHEVRON	CVX
83%	CONSTELLATION BRAN	STZ
83%	GENERAL MILLS	GIS
83%	GILEAD SCIENCES	GILD.O
83%	JOHNSON CONTROLS I	JCI
83%	KINDER MORGAN	KMI
83%	LOCKHEED MARTIN	LMT
83%	NIKE 'B'	NKE
83%	NORTHROP GRUMMAN	NOC
83%	PROLOGIS	PLD
83%	TE CONNECTIVITY	TEL
83%	VERIZON COMMUNICA	VZ
78%	3M	MMM
78%	AMER.ELEC.PWR.	AEP
78%	BECTON DICKINSON	BDX
78%	BIOGEN	BIIB.O
78%	CHARTER COMMS.CL.A	CHTR.O
78%	DOW CHEMICAL	DOW
78%	DUKE ENERGY	DUK
78%	EBAY	EBAY.O
78%	EOG RES.	EOG
78%	EXXON MOBIL	XOM
78%	GENERAL DYNAMICS	GD
78%	KRAFT HEINZ	KHC.O
78%	MARSH & MCLENNAN	MMC
78%	MEDTRONIC	MDT
78%	ROSS STORES	ROST.O
78%	TJX	TJX
78%	TRANSOCEAN	RIG
78%	WALMART	WMT
72%	CIGNA	CI
72%	DOLLAR GENERAL	DG
72%	EQUINIX REIT	EQIX.O
72%	INTUITIVE SURGICAL	ISRG.O

72%	MARATHON PETROLEU	MPC
72%	SEMPRA EN.	SRE
72%	SHERWIN-WILLIAMS	SHW
67%	ABBVIE	ABBV.K
67%	ACCENTURE CLASS A	ACN
67%	BAXTER INTL.	BAX
67%	CAMECO (NYS)	CCJ
67%	COSTCO WHOLESALE	COST.O
67%	CSX	CSX.O
67%	DELTA AIR LINES	DAL
67%	INTERCONTINENTAL E	ICE
67%	NEXTERA ENERGY	NEE
67%	OCCIDENTAL PTL.	OXY
67%	PEPSICO	PEP.O
67%	PROCTER & GAMBLE	PG
67%	SALESFORCE.COM	CRM
67%	UNION PACIFIC	UNP
56%	ADVANCED MICRO DEV	AMD.O
56%	AFLAC	AFL
56%	DANAHER	DHR
56%	EXELON	EXC
56%	LINDE	LIN
56%	METLIFE	MET
50%	AON CLASS A	AON
50%	COCA COLA	KO
50%	EDWARDS LIFESCIENCE	EW
50%	ESTEE LAUDER COS.'A'	EL
50%	FIDELITY NAT.INFO.SV	FIS
50%	FISERV	FISV.O
50%	MOODY'S	MCO
50%	SIMON PROPERTY GRO	SPG
50%	STRYKER	SYK
44%	BLACKROCK	BLK
44%	FACEBOOK CLASS A	FB.O
44%	GENERAL ELECTRIC	GE
44%	HCA HEALTHCARE	HCA
44%	MARRIOTT INTL.'A'	MAR.O
44%	MONSTER BEVERAGE	MNST.O
44%	PRUDENTIAL FINL.	PRU
39%	AMGEN	AMGN.O
39%	WELLTOWER	WELL.K
33%	ALLIANCE DATA SYSTE	ADS
33%	AMERICAN TOWER	AMT
33%	AUTODESK	ADSK.O
33%	CISCO SYSTEMS	CSCO.O
33%	CME GROUP	CME.O
33%	CROWN CASTLE INTL.	CCI
33%	FORD MOTOR	F
33%	HONEYWELL INTL.	HON
33%	HUMANA	HUM

33%	ILLUMINA	ILMN.O
33%	MASTERCARD	MA
33%	MICROSOFT	MSFT.O
33%	NORFOLK SOUTHERN	NSC
33%	PFIZER	PFE
33%	PUBLIC STORAGE	PSA
33%	S&P GLOBAL	SPGI.K
33%	STARBUCKS	SBUX.O
33%	VERTEX PHARMS.	VRTX.O
33%	VISA 'A'	V
33%	WILLIAMS	WMB
33%	ZOETIS	ZTS
28%	AMAZON.COM	AMZN.O
22%	ABBOTT LABORATORIE	ABT
22%	ADOBE (NAS)	ADBE.O
22%	AIR PRDS.& CHEMS.	APD
22%	BOSTON SCIENTIFIC	BSX
22%	MCDONALDS	MCD
22%	MONDELEZ INTERNATI	MDLZ.O
22%	REGENERON PHARMS.	REGN.O
22%	ROPER TECHNOLOGIES	ROP
22%	TRAVELERS COS.	TRV
22%	WALT DISNEY	DIS
22%	YUM! BRANDS	YUM
17%	ALXION PHARMS.	ALXN.O
17%	ANTHEM	ANTM.K
17%	ELI LILLY	LLY
17%	HP	HPQ
17%	JOHNSON & JOHNSON	JNJ
17%	NETFLIX	NFLX.O
17%	UNITEDHEALTH GROU	UNH
11%	COLGATE-PALM.	CL
11%	ECOLAB	ECL
11%	FORTIVE	FTV
11%	GENERAL MOTORS	GM
11%	INTUIT	INTU.O
11%	IQVIA HOLDINGS	IQV
11%	MERCK & COMPANY	MRK
11%	WASTE MANAGEMENT	WM
11%	XILINX	XLNX.O
6%	AMERICAN EXPRESS	AXP
6%	PHILIP MORRIS INTL.	PM
0%	ALTRIA GROUP	MO
0%	AUTOMATIC DATA PRO	ADP.O
0%	KIMBERLY-CLARK	KMB
0%	O REILLY AUTOMOTIVE	ORLY.O
0%	ORACLE	ORCL.K
0%	PAYCHEX	PAYX.O
0%	PAYPAL HOLDINGS	PYPL.O
0%	PROGRESSIVE OHIO	PGR

S&P 200 stocks – listed alphabetically (A-HP)

SCORE	COMPANY	RIC	PRICE	LT	MT	ST
78%	3M	MMM	169.67	uo	+	+
22%	ABBOTT LABORATORIE	ABT	83.36	do	-	d-
67%	ABBVIE	ABBV.K	70.58	-	u+	u+
67%	ACCENTURE CLASS A	ACN	194.16	+	o	-
94%	ACTIVISION BLIZZARD	ATVI.O	55.78	+	+	+
22%	ADOBE (NAS)	ADBE.O	282.93	uo	-	uo
56%	ADVANCED MICRO DEV	AMD.O	30.83	u+	uo	u+
56%	AFLAC	AFL	51.91	o	uo	+
22%	AIR PRDS.& CHEMS.	APD	215.24	+	-	-
17%	ALEXION PHARMS.	ALXN.O	108.54	-	-	uu+
83%	ALLERGAN	AGN	165.56	+	+	+
33%	ALLIANCE DATA SYSTE	ADS	132.95	-	o	+
83%	ALLSTATE ORD SHS	ALL	106.38	+	+	+
100%	ALPHABET 'C'	GOOG.O	1'231.30	+	+	+
0%	ALTRIA GROUP	MO	41.41	-	-	-
28%	AMAZON.COM	AMZN.O	1'807.84	-	o	do
78%	AMER.ELEC.PWR.	AEP	91.71	+	do	do
6%	AMERICAN EXPRESS	AXP	117.64	d-	-	do
83%	AMERICAN INTL.GP.	AIG	56.32	+	+	+
33%	AMERICAN TOWER	AMT	216.77	+	dd-	-
39%	AMGEN	AMGN.O	194.08	+	do	-
100%	AMPHENOL 'A'	APH	95.05	uu+	+	+
83%	ANALOG DEVICES	ADI.O	115.26	+	+	+
17%	ANTHEM	ANTM.K	258.58	-	-	u+
50%	AON CLASS A	AON	191.12	+	o	d-
100%	APPLE	AAPL.O	219.90	+	+	+
100%	APPLIED MATS.	AMAT.O	50.92	+	+	+
100%	AT&T	T	37.31	+	+	+
33%	AUTODESK	ADSK.O	153.87	-	o	+
0%	AUTOMATIC DATA PRO	ADP.O	158.17	dd-	dd-	-
100%	BANK OF AMERICA	BAC	30.13	+	+	+
100%	BANK OF NEW YORK M	BK	46.75	+	+	+
67%	BAXTER INTL.	BAX	86.92	+	+	d-
100%	BB&T	BBT	52.92	+	+	+
78%	BECTON DICKINSON	BDX	258.73	+	+	do
89%	BERKSHIRE HATHAWAY	BRKb	210.33	o	+	+
78%	BIOGEN	BIIB.O	236.12	uo	uu+	+
44%	BLACKROCK	BLK	435.71	o	uo	+
83%	BOEING	BA	378.85	u+	+	u+
100%	BOOKING HOLDINGS	BKNG.O	2'072.95	+	+	+
22%	BOSTON SCIENTIFIC	BSX	41.94	+	-	-
100%	BRISTOL MYERS SQUIB	BMY	49.47	+	+	u+
89%	BROADCAST	AVGO.O	288.66	+	+	do
67%	CAMECO (NYS)	CCJ	9.59	-	+	+
100%	CATERPILLAR	CAT	133.15	+	+	+
94%	CELGENE	CELG.O	98.38	+	+	o
100%	CHARLES SCHWAB	SCHW.K	43.60	u+	+	+
78%	CHARTER COMMS.CL.A	CHTR.O	423.25	+	+	+
83%	CHEVRON	CVX	124.12	u+	uu+	+
89%	CHUBB	CB	158.55	+	+	do

SCORE	COMPANY	RIC	PRICE	LT	MT	ST
72%	CIGNA	CI	165.50	u+	u+	+
33%	CISCO SYSTEMS	CSCO.O	49.96	-	uo	+
100%	CITIGROUP	C	69.83	+	+	+
33%	CME GROUP	CME.O	207.00	+	dd-	d-
50%	COCA COLA	KO	53.96	+	do	d-
89%	COGNIZANT TECH.SLTI	CTSH.O	63.99	do	+	+
11%	COLGATE-PALM.	CL	69.43	do	d-	d-
94%	COMCAST A	CMCSA.O	46.27	+	+	+
89%	CONOCOPHILLIPS	COP	62.53	uu+	u+	+
83%	CONSTELLATION BRAN	STZ	203.84	+	+	dd-
67%	COSTCO WHOLESALE	COST.O	288.69	+	+	dd-
33%	CROWN CASTLE INTL.	CCI	137.96	+	dd-	-
67%	CSX	CSX.O	72.39	-	+	+
89%	CVS HEALTH	CVS	63.43	+	+	+
56%	DANAHER	DHR	140.65	+	uo	o
100%	DEERE	DE	164.59	+	u+	+
67%	DELTA AIR LINES	DAL	59.07	+	o	+
72%	DOLLAR GENERAL	DG	153.17	+	+	do
94%	DOMINION ENERGY	D	78.49	+	u+	uo
100%	DOVER	DOV	99.25	+	+	+
78%	DOW CHEMICAL	DOW	49.01	uo	u+	+
78%	DUKE ENERGY	DUK	93.12	+	+	o
100%	EATON	ETN	86.46	+	+	+
78%	EBAY	EBAY.O	40.30	+	do	do
11%	ECOLAB	ECL	192.11	do	-	-
50%	EDWARDS LIFESCIENCE	EW	215.09	+	do	-
94%	ELECTRONIC ARTS	EA.O	99.12	+	+	+
17%	ELI LILLY	LLY	110.13	-	o	d-
100%	EMERSON ELECTRIC	EMR	65.66	u+	+	+
78%	EOG RES.	EOG	85.64	uo	+	+
72%	EQUINIX REIT	EQIX.O	549.93	+	+	uo
50%	ESTEE LAUDER COS.'A'	EL	192.55	+	do	dd-
56%	EXELON	EXC	47.38	d-	+	do
78%	EXXON MOBIL	XOM	73.73	uo	+	+
44%	FACEBOOK CLASS A	FB.O	186.22	+	o	do
100%	FEDEX	FDX	173.57	+	+	+
50%	FIDELITY NAT.INFO.SV	FIS	133.06	+	o	-
50%	FISERV	FISV.O	103.62	+	do	d-
33%	FORD MOTOR	F	9.30	do	o	do
11%	FORTIVE	FTV	69.50	-	-	uo
78%	GENERAL DYNAMICS	GD	190.97	+	+	o
44%	GENERAL ELECTRIC	GE	9.38	o	uo	+
83%	GENERAL MILLS	GIS	54.54	+	+	+
11%	GENERAL MOTORS	GM	37.21	do	dd-	dd-
83%	GILEAD SCIENCES	GILD.O	65.88	+	do	+
100%	GOLDMAN SACHS GP.	GS	217.22	+	+	+
44%	HCA HEALTHCARE	HCA	128.95	uo	o	+
94%	HOME DEPOT	HD	230.99	+	+	+
33%	HONEYWELL INTL.	HON	166.21	do	do	do
17%	HP	HPQ	18.87	-	-	+

S&P 200 stocks – listed alphabetically (Humana-Z)

SCORE	COMPANY	RIC	PRICE	LT	MT	ST
33%	HUMANA	HUM	278.28	u+	-	u+
100%	ILLINOIS TOOL WORKS	ITW	156.79	+	+	+
33%	ILLUMINA	ILMN.O	300.89	-	uo	uu+
100%	INTEL	INTC.O	52.20	+	+	+
67%	INTERCONTINENTAL EX	ICE	91.88	+	do	-
100%	INTERNATIONAL BUS.M	IBM	142.48	+	+	+
11%	INTUIT	INTU.O	265.82	do	d-	-
72%	INTUITIVE SURGICAL	ISRG.O	523.64	uu+	u+	u+
11%	IQVIA HOLDINGS	IQV	150.84	do	-	-
17%	JOHNSON & JOHNSON	JNJ	129.54	-	-	u+
83%	JOHNSON CONTROLS I	JCI	43.71	+	+	+
100%	JP MORGAN CHASE & C	JPM	119.16	+	+	+
0%	KIMBERLY-CLARK	KMB	128.78	dd-	-	-
83%	KINDER MORGAN	KMI	20.67	u+	o	+
78%	KRAFT HEINZ	KHC.O	29.62	uo	+	+
100%	LAM RESEARCH	LRCX.O	234.94	+	+	+
56%	LINDE	LIN	188.52	o	uo	u+
83%	LOCKHEED MARTIN	LMT	392.66	+	+	uu+
89%	LOWE'S COMPANIES	LOW	112.63	+	+	do
100%	LYONDELLBASELL IND	LYB	89.67	u+	+	+
72%	MARATHON PETROLEU	MPC	52.41	o	+	+
44%	MARRIOTT INTL.'A'	MAR.O	130.48	o	uo	+
78%	MARSH & MCLENNAN	MMC	100.03	+	o	do
33%	MASTERCARD	MA	274.08	+	dd-	dd-
22%	MCDONALDS	MCD	207.40	do	dd-	d-
78%	MEDTRONIC	MDT	109.05	+	+	o
11%	MERCK & COMPANY	MRK	82.03	o	-	-
56%	METLIFE	MET	47.55	u+	o	+
100%	MICRON TECHNOLOGY	MU.O	50.15	+	+	+
33%	MICROSOFT	MSFT.O	136.33	+	d-	dd-
22%	MONDELEZ INTERNATI	MDLZ.O	54.05	do	dd-	dd-
44%	MONSTER BEVERAGE	MNST.O	59.23	uo	uo	u+
50%	MOODY'S	MCO	213.33	+	do	dd-
100%	MORGAN STANLEY	MS	44.75	+	+	+
17%	NETFLIX	NFLX.O	294.29	-	-	+
67%	NEXTERA ENERGY	NEE	218.31	+	+	-
83%	NIKE 'B'	NKE	87.27	+	+	+
33%	NORFOLK SOUTHERN	NSC	182.28	-	uo	+
83%	NORTHROP GRUMMAN	NOC	371.43	+	u+	uu+
100%	NVIDIA	NVDA.O	180.21	+	+	+
0%	O REILLY AUTOMOTIVE	ORLY.O	380.44	dd-	dd-	dd-
67%	OCCIDENTAL PTL.	OXY	47.80	-	u+	+
100%	ONEOK	OKE	75.83	+	+	+
0%	ORACLE	ORCL.K	53.14	d-	d-	dd-
0%	PAYCHEX	PAYX.O	81.06	d-	-	d-
0%	PAYPAL HOLDINGS	PYPL.O	106.52	-	-	-
67%	PEPSICO	PEP.O	134.88	+	+	d-
33%	PFIZER	PFE	36.83	-	o	+
6%	PHILIP MORRIS INTL.	PM	72.60	-	-	o
100%	PHILLIPS 66	PSX	104.03	+	+	+

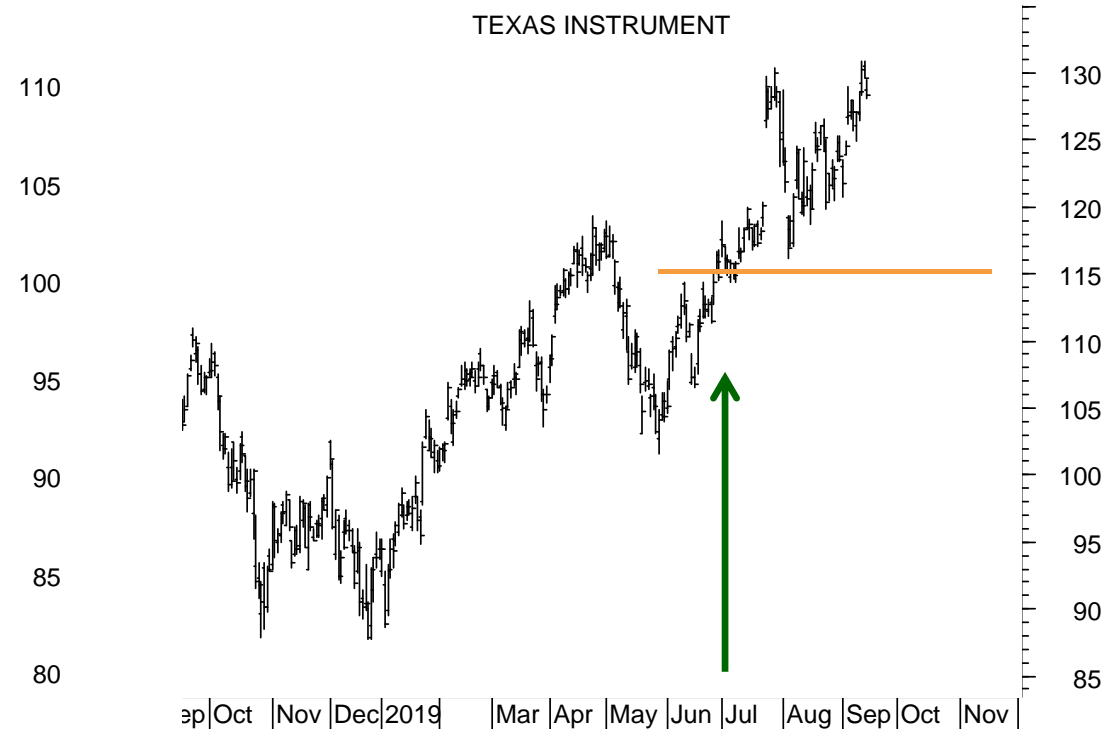
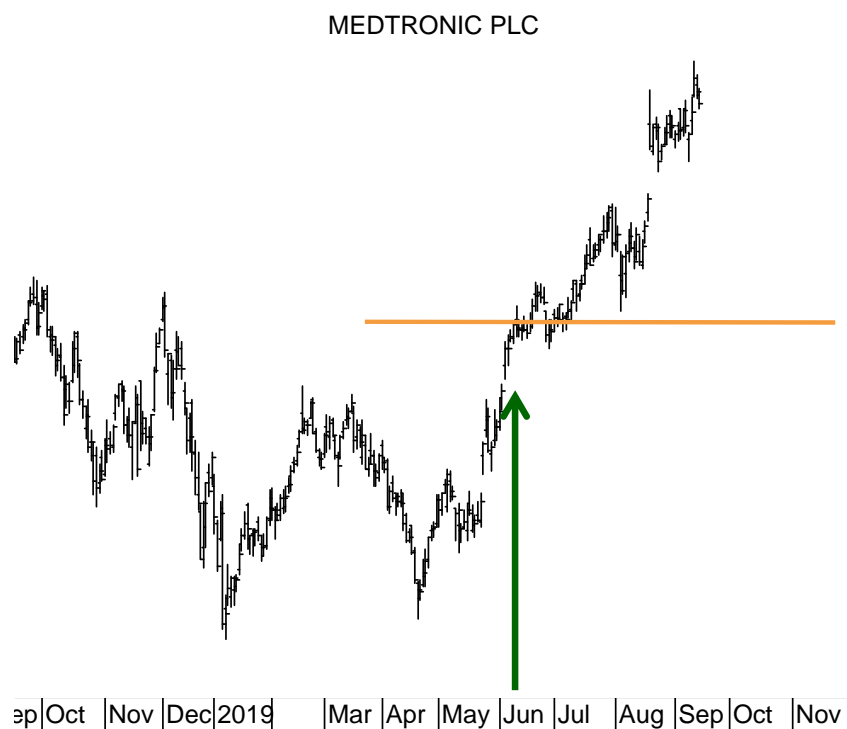
SCORE	COMPANY	RIC	PRICE	LT	MT	ST
100%	PNC FINL.SVS.GP.	PNC	140.50	+	+	+
67%	PROCTER & GAMBLE	PG	119.75	+	+	dd-
0%	PROGRESSIVE OHIO	PGR	73.40	-	-	dd-
83%	PROLOGIS	PLD	85.22	+	+	+
44%	PRUDENTIAL FINL.	PRU	89.10	uo	uo	+
89%	PUB.SER.ENTER.GP.	PEG	60.80	+	+	o
33%	PUBLIC STORAGE	PSA	247.35	+	d-	-
94%	QUALCOMM	QCOM.O	78.04	+	+	do
100%	RAYTHEON 'B'	RTN	204.06	+	+	+
89%	REGENCY CENTERS	REG.O	68.14	do	+	+
22%	REGENERON PHARMS.	REGN.O	285.89	-	o	uo
22%	ROPER TECHNOLOGIES	ROP	356.73	o	-	-
78%	ROSS STORES	ROST.O	107.59	+	+	do
33%	S&P GLOBAL	SPGI.K	249.50	+	dd-	d-
67%	SALESFORCE.COM	CRM	153.01	uo	u+	o
89%	SCHLUMBERGER	SLB	39.31	u+	+	+
72%	SEMPRA EN.	SRE	141.75	+	+	o
72%	SHERWIN-WILLIAMS	SHW	527.49	+	+	uo
50%	SIMON PROPERTY GRO	SPG	154.39	-	+	+
100%	SOUTHERN	SO	59.86	+	+	+
100%	SOUTHWEST AIRLINES	LUV	55.81	+	+	+
33%	STARBUCKS	SBUX.O	89.42	+	d-	-
50%	STRYKER	SYK	215.29	+	do	-
100%	SYSCO	SYI	77.19	+	+	+
89%	TARGET	TGT	106.96	+	+	do
83%	TE CONNECTIVITY	TEL	95.10	+	+	+
100%	TEXAS INSTRUMENTS	TXN.O	128.36	+	+	+
22%	TRAVELERS COS.	TRV	146.34	+	d-	dd-
78%	TJX	TJX	55.43	+	+	do
78%	TRANSOCEAN	RIG	6.51	uo	+	+
67%	UNION PACIFIC	UNP	168.95	-	u+	+
100%	UNITED PARCEL SER.'B'	UPS	122.57	+	+	+
100%	UNITED TECHNOLOGIE	UTX	138.08	+	+	+
17%	UNITEDHEALTH GROU	UNH	234.43	-	-	+
100%	US BANCORP	USB	55.86	+	+	+
89%	V F	VFC	88.42	+	+	+
100%	VALERO ENERGY	VLO	82.39	uu+	+	+
83%	VERIZON COMMUNICA'	VZ	59.50	+	+	+
33%	VERTEX PHARMS.	VRTX.O	177.55	uo	-	uu+
33%	VISA 'A'	V	176.11	+	dd-	dd-
89%	WALGREENS BOOTS AL	WBA.O	55.34	+	+	+
78%	WALMART	WMT	115.57	+	+	do
22%	WALT DISNEY	DIS	135.80	do	d-	dd-
11%	WASTE MANAGEMENT	WM	111.90	do	d-	-
100%	WELLS FARGO & CO	WFC	48.98	+	+	+
39%	WELLTOWER	WELL.K	86.93	+	do	d-
33%	WILLIAMS	WMB	24.99	-	o	+
11%	XILINX	XLNX.O	104.39	-	d-	+
22%	YUM! BRANDS	YUM	110.54	do	dd-	dd-
33%	ZOETIS	ZTS	119.64	+	dd-	d-

Dow Jones 30 Industrial Index constituent stocks

SCORE	COMPANY	RIC	PRICE	LT	MT	ST	COMMENT	DATE BOUGHT	PRICE BOUGHT	PROFIT or LOSS
78%	3M	MMM	169.67	uo	+	+	Major resistance is at 175.			
6%	AMERICAN EXPRESS	AXP	117.64	d-	-	do	Medium-term downtrend unfolding. Support is 113.50.			
100%	APPLE	AAPL.O	219.90	+	+	+	Must rise above 226 to signal 240 / 245.	27.06.2019	201.10	9.35%
83%	BOEING	BA	378.85	u+	+	u+	The triangle from 23.8.2019 broke to the upside.	10.09.2019	358.80	5.59%
100%	CATERPILLAR	CAT	133.15	+	+	+	Add to the position if 138 is broken.	10.09.2019	130.10	2.34%
83%	CHEVRON	CVX	124.12	u+	uu+	+	Hold.	10.09.2019	119.40	3.95%
33%	CISCO SYSTEMS	CSCO.O	49.96	-	uo	+				
50%	COCA COLA	KO	53.96	+	do	d-	Sell signal to be triggered if 53 is broken.			
78%	DOW CHEMICAL	DOW	49.01	uo	u+	+				
78%	EXXON MOBIL	XOM	73.73	uo	+	+	Must rise above 76.50 to signal 80.50 or 86.	10.09.2019	72.6	1.56%
100%	GOLDMAN SACHS GP.	GS	217.22	+	+	+	Hold.	10.09.2019	216.2	0.47%
94%	HOME DEPOT	HD	230.99	+	+	+	Appears to be topping. Sell signals if 226, 221, 212 are broken.			
100%	INTEL	INTC.O	52.20	+	+	+	BUY if the resistance at 53.50 is broken.			
100%	INTERNATIONAL BUS.M	IBM	142.48	+	+	+	Entering a short-term correcting.			
17%	JOHNSON & JOHNSON	JNJ	129.54	-	-	u+				
100%	JP MORGAN CHASE & C	JPM	119.16	+	+	+	Hold.	10.09.2019	115.40	3.26%
22%	MCDONALDS	MCD	207.40	do	dd-	d-	Sell signals were triggered with the break of 215.50 and 212.50. Sell again <206, 199.			
11%	MERCK & COMPANY	MRK	82.03	o	-	-	Sell signal was triggered at 82 and 78.50. Sell again if 78.50 and 75.50 is broken.			
33%	MICROSOFT	MSFT.O	136.33	+	d-	dd-	Sell signals to be triggered if 133, 129 are broken.			
83%	NIKE 'B'	NKE	87.27	+	+	+	Must rise above the long-term resistance at 90 / 91 to signal 97 / 99. Sell < 83, 77.50.			
33%	PFIZER	PFE	36.83	-	o	+				
67%	PROCTER & GAMBLE	PG	119.75	+	+	dd-	Sell signal to be triggered if 119 is broken.			
22%	TRAVELERS COS.	TRV	146.34	+	d-	dd-	Sell signals will be triggered if the supports at 145, 141, 133.50 are broken.			
100%	UNITED TECHNOLOGIE	UTX	138.08	+	+	+	Major resistance is 140.50. Sell signals to be triggered if 134, 130, 127 is broken.			
17%	UNITEDHEALTH GROUPE	UNH	234.43	-	-	+				
83%	VERIZON COMMUNICAT	VZ	59.50	+	+	+	Sell signals if the supports at 57.50 and 56.70 / 56.30 are broken. ADD > 60.60.	28.08.2019	57.90	2.76%
33%	VISA 'A'	V	176.11	+	dd-	dd-	Triggered the sell signal at 179 and fell to support at 174; sell again if 174/168 is broken.			
89%	WALGREENS BOOTS AL	WBA.O	55.34	+	+	+				
78%	WALMART	WMT	115.57	+	+	do	Could have topped medium term. Sell signals to be triggered if 113 and 109.50 is broken.			
22%	WALT DISNEY	DIS	135.80	do	d-	dd-	Sell signal to be triggered if the supports at 129 and 123 are broken.			

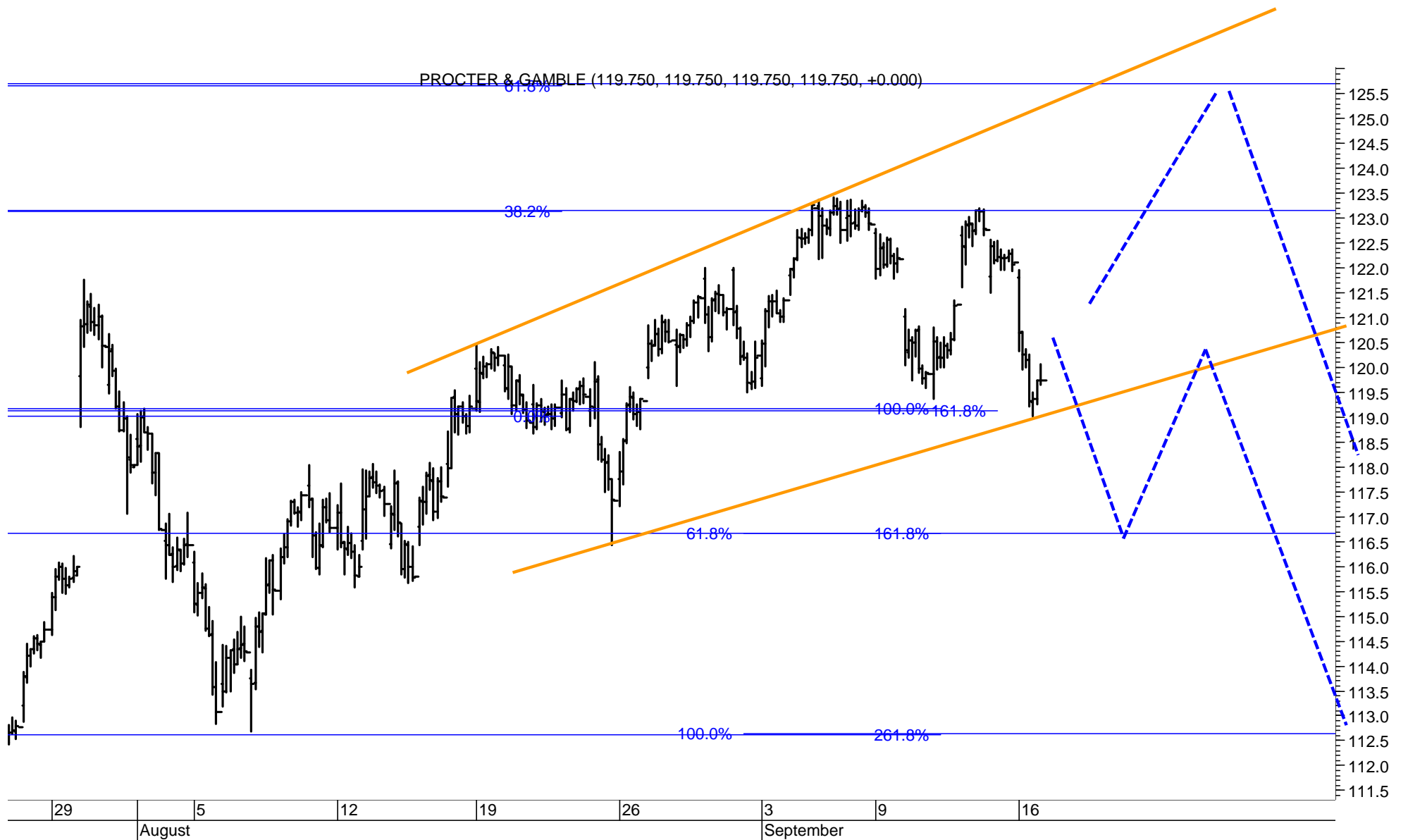
Other US stocks

SCORE	COMPANY	RIC	PRICE	LT	MT	ST	COMMENT	DATE BOUGHT	PRICE BOUGHT	PROFIT or LOSS
83%	AMERICAN INTL.GP.	AIG	56.32	+	+	+	Sell the position if 51.70 is broken. Support is at 49 and 44.	01.05.2019	47.8	17.82%
11%	COLGATE-PALM.	CL	69.43	do	d-	d-	Sold the position with the break of 69.50, at a loss of 3.7%.			
78%	DUKE ENERGY	DUK	93.12	+	+	o	Sell the position if 92.50 is broken.	14.06.2019	87.95	5.88%
78%	EBAY	EBAY.O	40.30	+	do	do	Sell the position if 37.50 is broken.	13.06.2019	39.25	2.68%
50%	FIDELITY NAT.INFO.SV	FIS	133.06	+	o	-	TOOK PROFIT of 15%.			
78%	GENERAL DYNAMICS	GD	190.97	+	+	o	Sell the position if 181 is broken.	26.06.2019	179.65	6.30%
78%	MEDTRONIC	MDT	109.05	+	+	o	TAKE PROFIT of 11%.	11.06.2019	97.8	11.50%
100%	MICRON TECHNOLOGY	MU.O	50.15	+	+	+	Hold.	10.07.2019	43.1	16.36%
83%	NORTHROP GRUMMAN	NOC	371.43	+	u+	uu+	TOOK PROFIT OF 14%.			
100%	PHILLIPS 66	PSX	104.03	+	+	+	Hold.	02.07.2019	95.6	8.82%
100%	TEXAS INSTRUMENTS	TXN.O	128.36	+	+	+	TAKE PROFIT of 11%.	27.06.2019	115.15	11.47%
78%	TJX	TJX	55.43	+	+	do	Sell the position. Likely to enter a medium-term correction.	09.07.2019	55	0.78%



PROCTER & GAMBLE – hourly chart

Procter will trigger a SELL signal if the supports at 119 and 116.50 are broken.



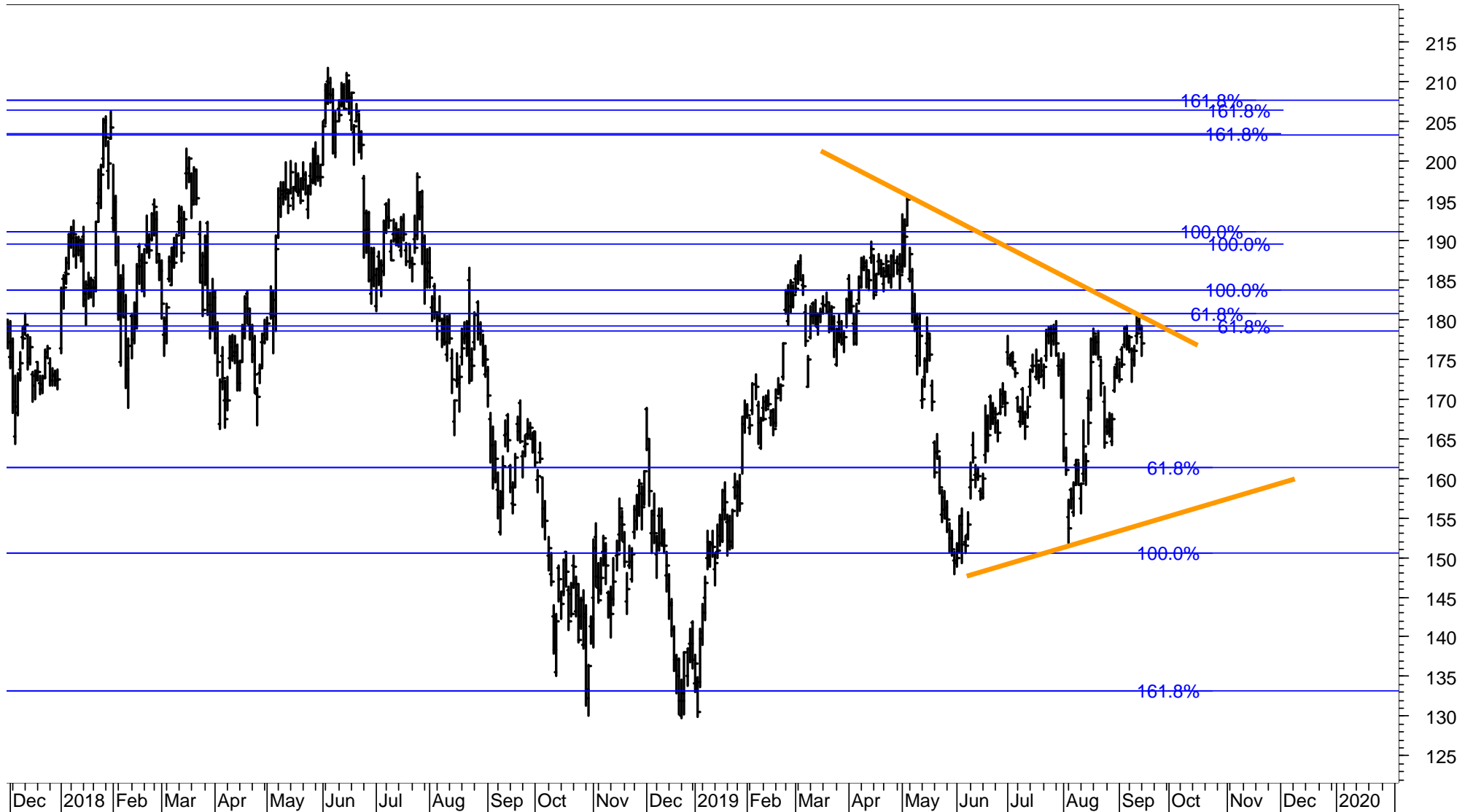
JAPAC 100 stocks – listed according to the Score (range from 100% to 0%, 40%-60% is neutral)

SCORE	COMPANY	RIC	PRICE	LT	MT	ST
100%	ALIBABA GRP AD/d	BABA.K	177.07	+	+	+
100%	FANUC LTD/d	6954.T	20'150.00	u+	+	+
100%	HANON SYSTEMS/d	018880.KS	11'950.00	u+	uu+	+
100%	HONDA MOTOR/d	7267.T	2'928.00	u+	+	+
100%	HYUNDAI HEAVY /d	267250.KS	355'500.00	+	+	+
100%	KB FGI/d	105560.KS	44'100.00	u+	u+	+
100%	KOREA SHIPBUIL/d	009540.KS	125'000.00	+	+	+
100%	KT G/d	033780.KS	103'000.00	+	+	u+
100%	MIRAE ASSET DW/d	006800.KS	7'730.00	u+	uu+	u+
100%	MITSUB UFJ FG/d	8306.T	571.70	+	+	+
100%	MIZUHO FINANCI/d	8411.T	168.00	u+	+	+
100%	NAVER/d	035420.KS	155'000.00	+	+	+
100%	NTT DOCOMO/d	9437.T	2'843.50	+	+	+
100%	SAMSUNG ELEC-1/d	005935.KS	39'200.00	+	+	+
100%	SAMSUNG ELECTR/d	005930.KS	46'900.00	+	+	+
100%	SAMSUNG HEAVY/d	010140.KS	8'430.00	+	+	+
100%	SHIN-ETSU CHEM/d	4063.T	11'660.00	+	+	+
100%	S-OIL/d	010950.KS	101'000.00	+	+	+
100%	SONY CORP/d	6758.T	6'537.00	+	+	+
100%	TAIWAN SEMICON/d	2330.TW	265.00	+	+	+
100%	TOYOTA MOTOR C/d	7203.T	7'445.00	+	+	+
94%	INFOSYS LTD/d	INFY.NS	824.75	+	+	do
94%	KALBE FARMA TB/d	KLBF.JK	1'670.00	+	+	do
89%	GS HOLDINGS/d	078930.KS	50'400.00	u+	u+	+
89%	HANA FINANCIAL/d	086790.KS	35'800.00	u+	+	+
89%	HYUNDAI STEEL/d	004020.KS	40'500.00	u+	+	+
89%	IBK/d	024110.KS	13'300.00	uo	u+	+
89%	KOREA ZINC/d	010130.KS	443'500.00	u+	u+	+
89%	LG HOUSEHOLD/d	051900.KS	1'300'000.00	u+	+	+
89%	LOTTE CHEMICAL/d	011170.KS	252'500.00	u+	+	+
89%	POSCO/d	005490.KS	238'000.00	u+	u+	+
89%	SAMSUNG BIOLOG/d	207940.KS	315'000.00	uo	u+	u+
89%	SK HYNIX/d	000660.KS	79'400.00	+	+	do
89%	SK INNOVATION/d	096770.KS	171'500.00	u+	+	+
89%	SMFG/d	8316.T	3'806.00	uo	u+	+
89%	TAKEDA PHARM/d	4502.T	3'788.00	uo	+	+
89%	UNILEVER INDON/d	UNVR.JK	46'875.00	+	+	do
83%	KIA MOTORS/d	000270.KS	44'000.00	+	o	u+
83%	NTT/d	9432.T	5'348.00	+	+	u+
78%	AMOREPACIFIC/d	090430.KS	138'500.00	o	+	+
78%	BANK OF CHINA/d	3988.HK	3.1500	o	+	+
78%	CANON INC/d	7751.T	2'945.00	o	uu+	+
78%	CELLTRION HEAL/d	091990.KQ	52'100.00	uo	+	+
78%	CELLTRION/d	068270.KS	171'000.00	uo	u+	+
78%	CENTRAL JAPAN /d	9022.T	22'210.00	uo	u+	+
78%	CHAROEN POKPHA/d	CPIN.JK	5'250.00	o	+	+
78%	CNOOC/d	0883.HK	12.86	uo	u+	+
78%	HYUNDAI ENG&CO/d	000720.KS	48'100.00	uo	u+	+
78%	KDDI/d	9433.T	2'925.00	+	u+	o
78%	LG ELECTRONICS/d	066570.KS	65'600.00	o	uu+	u+

SCORE	COMPANY	RIC	PRICE	LT	MT	ST
78%	NETMARBLE/d	251270.KS	99'000.00	uo	+	+
78%	SAMSUNG C&T/d	028260.KS	91'500.00	uo	u+	uu+
78%	SAMSUNG EL-MEC/d	009150.KS	96'700.00	o	+	+
78%	SAMSUNG LIFE/d	032830.KS	72'800.00	uo	uu+	+
78%	SHINHAN FINANC/d	055550.KS	42'750.00	o	uu+	+
72%	TENCENT/d	0700.HK	343.60	u+	+	+
67%	DB INSURANCE/d	005830.KS	51'600.00	-	u+	+
67%	HANKOOK TIR TE/d	161390.KS	31'200.00	-	uu+	uu+
67%	HYUNDAI MOBIS/d	012330.KS	248'000.00	+	do	dd-
67%	JAPAN TOBACCO/d	2914.T	2'332.50	-	uu+	+
67%	KAKAO/d	035720.KS	132'000.00	+	do	-
67%	KANGWON LAND/d	035250.KS	29'850.00	-	u+	+
67%	LG DISPLAY/d	034220.KS	14'700.00	-	+	+
67%	NCSOFT/d	036570.KS	522'000.00	+	+	dd-
67%	NISSAN MOTOR C/d	7201.T	716.70	-	u+	+
67%	SK HOLDINGS/d	034730.KS	210'500.00	-	u+	+
61%	LG UPLUS/d	032640.KS	13'550.00	-	+	+
61%	LOTTE SHOPPING/d	023530.KS	137'500.00	-	+	do
50%	HANMI PHARM/d	128940.KS	301'500.00	-	uo	uu+
50%	KAO CORPORATIO/d	4452.T	7'793.00	-	uo	u+
50%	SEMEN INDONESIA/d	SMGR.JK	12'650.00	+	do	d-
44%	E-MART/d	139480.KS	115'500.00	-	+	o
44%	FAST RETAILING/d	9983.T	64'840.00	do	o	+
39%	INDOCEMENT T P/d	INTP.JK	20'775.00	+	d-	do
33%	HYUNDAI MOTOR/d	005380.KS	126'000.00	o	uo	o
33%	JAPAN POST HLD/d	6178.T	1'029.00	-	uo	+
33%	KOREA ELEC POW/d	015760.KS	25'600.00	-	uo	uu+
33%	LG CORP/d	003550.KS	70'800.00	o	o	do
33%	SAMSUNG FIRE I/d	000810.KS	233'500.00	-	uo	+
33%	TELKOM INDONESIA/d	TLKM.JK	4'260.00	+	d-	-
33%	UNITED TRACTOR/d	UNTR.JK	22'475.00	-	o	+
28%	ASTRA INTL TBK/d	ASII.JK	6'550.00	-	uo	do
28%	BHARTI AIRTEL/d	BRTI.NS	344.00	+	dd-	do
28%	LG CHEM/d	051910.KS	324'500.00	-	o	o
28%	WOONGJIN COWAY/d	021240.KS	81'800.00	do	do	dd-
22%	HYUNDAI GLOVIS/d	086280.KS	151'500.00	+	-	-
22%	RELIANCE/d	RELI.NS	1'199.40	-	o	uo
17%	BANK BNI TBK/d	BBNI.JK	7'675.00	-	-	u+
17%	BANK RAKYAT IN/d	BBRI.JK	4'170.00	o	-	o
17%	RECRUIT HOLDIN/d	6098.T	3'250.00	-	-	u+
17%	SAMSUNG SDS/d	018260.KS	199'500.00	-	-	uu+
17%	SOFTBANK GROUP/d	9984.T	4'690.00	-	-	u+
11%	SAMSUNG SDI/d	006400.KS	234'500.00	do	-	-
11%	SK TELECOM/d	017670.KS	239'500.00	-	-	o
11%	TATA CONSULT/d	TCS.NS	2'117.95	o	-	-
6%	BANK MANDIRI T/d	BMRI.JK	7'050.00	-	-	o
6%	INDAH KIAT PUL/d	INKP.JK	7'150.00	-	d-	do
0%	GUDANG GARAM T/d	GGRM.JK	54'750.00	-	-	-
0%	H M SAMPOERNA/d	HMSP.JK	2'340.00	-	-	-

ALIBABA

Based on the wave pattern and its Fibonacci correlations, Alibaba will trigger a major BUY signal if it breaks the resistance 178 / 184. Resistance levels are at 191, 204 / 208. Supports are at 161, 150 or 133.



SAMSUNG ELECTRONICS

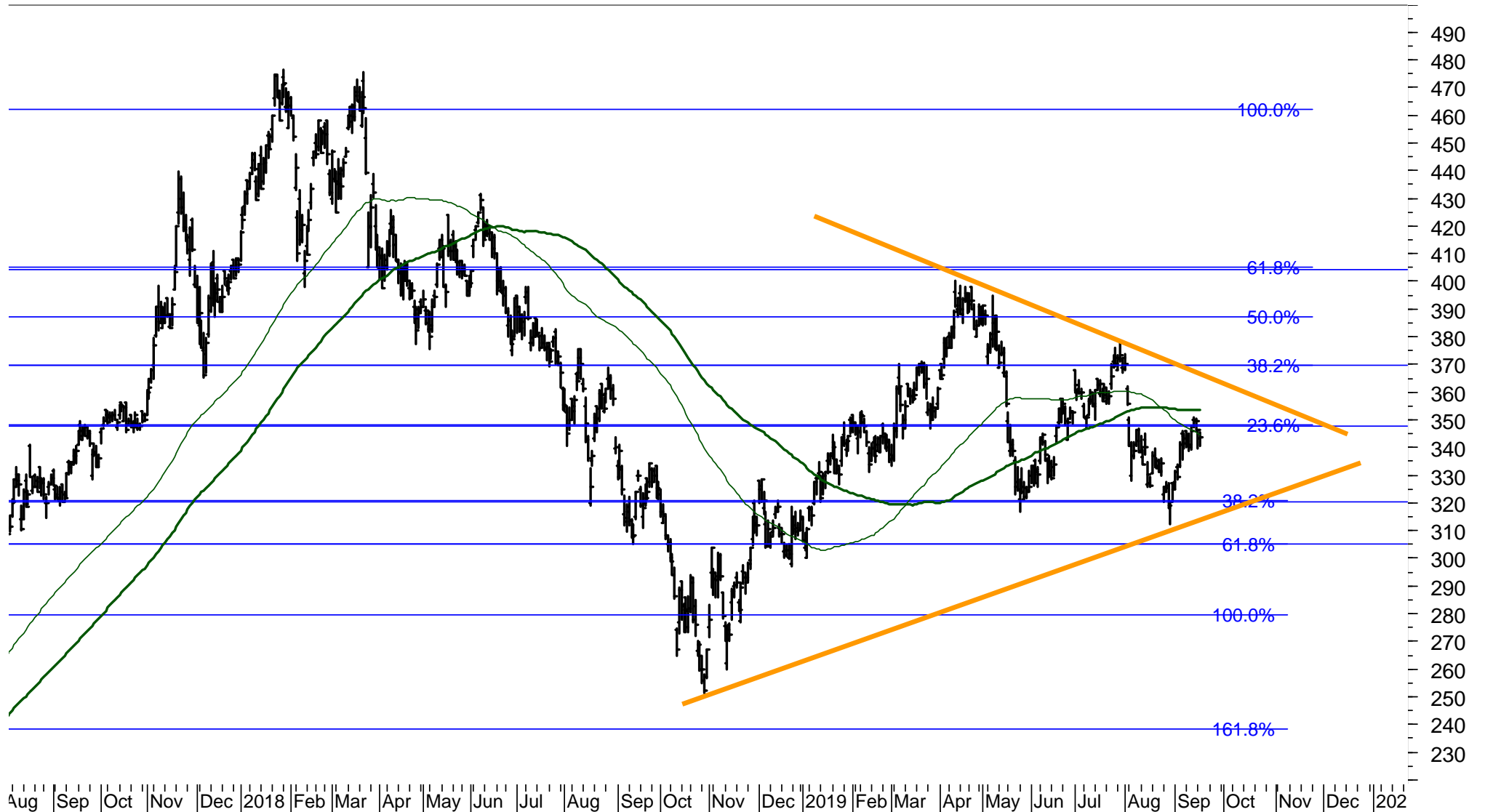
Based on the wave pattern and its Fibonacci correlations, Samsung will trigger a BUY signal if it breaks the resistance at 47.2k / 47.8k.

Next resistance and target is 49.8k or 54k. Supports are 45.8k / 45.3k or 44k or 42k.



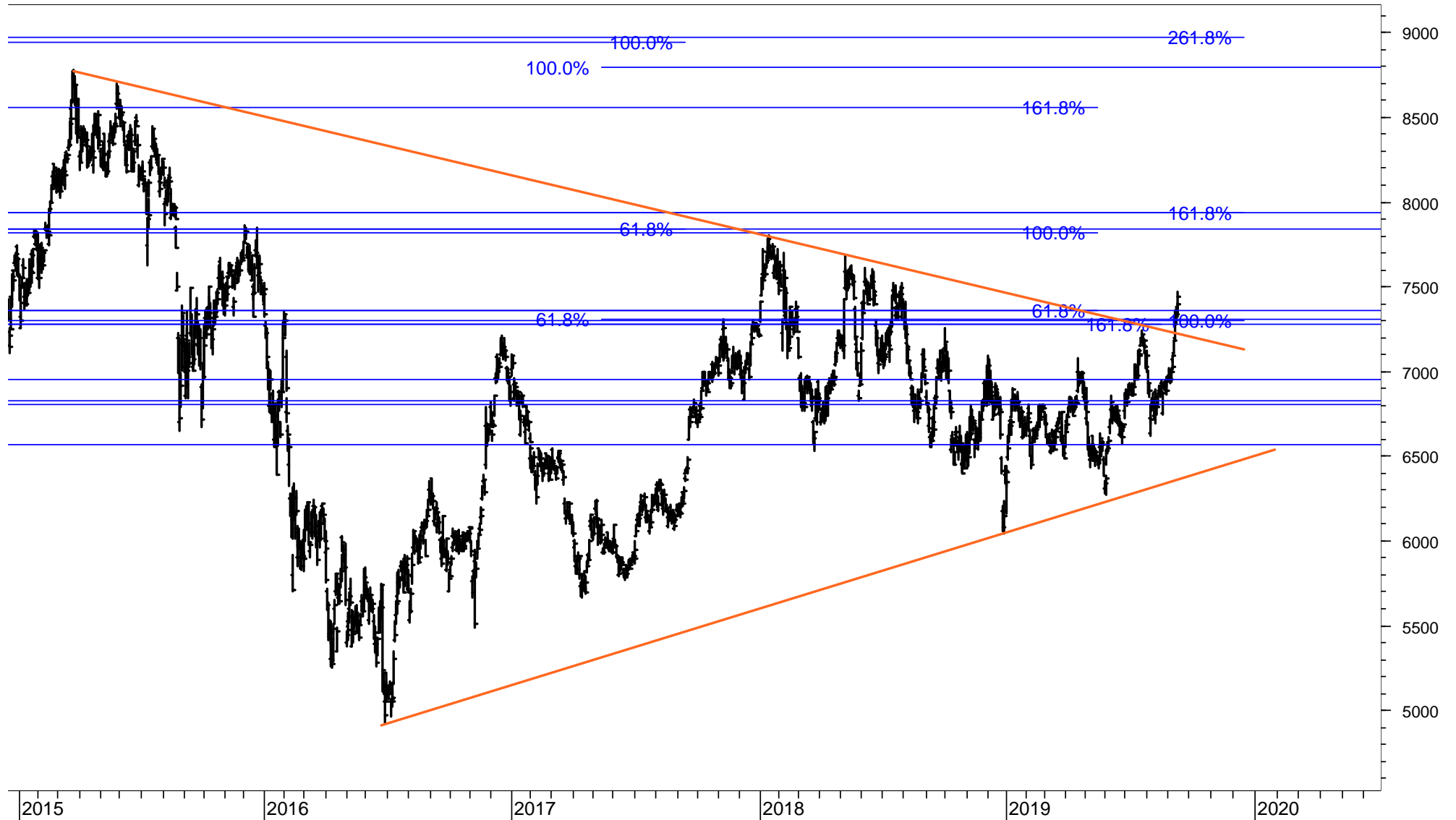
TENCENT

Based on the wave pattern and its Fibonacci correlations, a break of 250/252 will trigger a medium-term uptrend signal with next resistance at 370 or 405. Supports are at 320, 305 or 280.



TOYOTA

Toyota triggered a BUY signal with the break of the resistance at 7300 / 7400.
Next resistances are at 7800 / 8000 or 8500 to 9000.
Supports are at 6950, 6800 or 6550.



Disclaimer

Copyright © 2018 and 2019; FinChartOutlook GmbH, Rolf Bertschi, all rights reserved.

This Publication is designed for sophisticated money managers who are aware of the risk in securities investments and market forecasting. The analysis herein is based both on technical and cyclic readings and the recommendations represent the opinion of the Publisher, FinChartOutlook GmbH. Past performance does not imply or guarantee profitable results in the future. Before making specific investments, further investigation is recommended. Although the information contained in this Publication has been derived from sources which are believed to be reliable, they are not always necessarily complete and cannot be guaranteed. Neither the Publisher, FinChartOutlook GmbH, nor any of its employees, affiliates or subsidiaries shall have any liability for any loss, harm or other detriment which has been sustained by any natural person or entity that has relied on the information contained in this Publication. Any person or entity who does rely on any information contained in this Publication does so at his/her own risk and by doing so assumes all liability for any such loss, harm or other detriment. Employees of the Publisher may at times have positions in the securities referred to in this Publication and may make purchases or sales of these securities while the Publication is in circulation. An advisor / client relationship is not created by the distribution or delivery of this publication.

The information published and opinions expressed are provided by FinChartOutlook GmbH for personal use and for informational purposes only. The information is not intended to provide specific financial, investment, tax, legal or accounting advice for you, and is not intended to be relied upon in that regards. You should not act or rely on the information without professional assistance. Non information published in this Publication constitutes an offer or recommendation, to buy or sell any investment instruments, to effect any transactions, or to conclude any legal act of any kind whatsoever. FinChartOutlook GmbH disclaims, without intention, all liability for any loss or damage of any kind, including any direct, indirect or consequential damages, which might be incurred through the use of any information in this presentation. The entire content of this paper is subject to copyright with all rights reserved. You may save or print out a hard copy, provided that you do not remove any copyright or other proprietary notices. All property rights shall remain with FinChartOutlook GmbH. The content of this Publication may not be reproduced (in whole or in part), transmitted (by electronic means or otherwise), modified, linked into or used for any public or commercial purpose without the prior written permission of Rolf P. Bertschi, FinChartOutlook GmbH.

Sources

The charts in this publication are from Metastock and Datastream from Thomson Reuters Equis. All indicators and analyses are by Rolf Bertschi.

Explanations

For a more detailed explanation of the Trend and Momentum Models applied in this Chart Outlook, please see

www.chartoutlook.com

www.rolfbertschi.ch

E-Mail

rolf.bertschi@chartoutlook.ch

FinChartOutlook GmbH, Rolf P. Bertschi, Dörflistrasse 17, 8903 Birmensdorf ZH, Switzerland

Disclaimer

Copyright © 2018 and 2019; FinChartOutlook GmbH, Rolf Bertschi, all rights reserved.

This Publication is designed for sophisticated money managers who are aware of the risk in securities investments and market forecasting. The analysis herein is based both on technical and cyclic readings and the recommendations represent the opinion of the Publisher, FinChartOutlook GmbH. Past performance does not imply or guarantee profitable results in the future. Before making specific investments, further investigation is recommended. Although the information contained in this Publication has been derived from sources which are believed to be reliable, they are not always necessarily complete and cannot be guaranteed. Neither the Publisher, FinChartOutlook GmbH, nor any of its employees, affiliates or subsidiaries shall have any liability for any loss, harm or other detriment which has been sustained by any natural person or entity that has relied on the information contained in this Publication. Any person or entity who does rely on any information contained in this Publication does so at his/her own risk and by doing so assumes all liability for any such loss, harm or other detriment. Employees of the Publisher may at times have positions in the securities referred to in this Publication and may make purchases or sales of these securities while the Publication is in circulation. An advisor / client relationship is not created by the distribution or delivery of this publication.

The information published and opinions expressed are provided by FinChartOutlook GmbH for personal use and for informational purposes only. The information is not intended to provide specific financial, investment, tax, legal or accounting advice for you, and is not intended to be relied upon in that regards. You should not act or rely on the information without professional assistance. Non information published in this Publication constitutes an offer or recommendation, to buy or sell any investment instruments, to effect any transactions, or to conclude any legal act of any kind whatsoever. FinChartOutlook GmbH disclaims, without intention, all liability for any loss or damage of any kind, including any direct, indirect or consequential damages, which might be incurred through the use of any information in this presentation. The entire content of this paper is subject to copyright with all rights reserved. You may save or print out a hard copy, provided that you do not remove any copyright or other proprietary notices. All property rights shall remain with FinChartOutlook GmbH. The content of this Publication may not be reproduced (in whole or in part), transmitted (by electronic means or otherwise), modified, linked into or used for any public or commercial purpose without the prior written permission of Rolf P. Bertschi, FinChartOutlook GmbH.

Sources

The charts in this publication are from Metastock and Datastream from Thomson Reuters Equis. All indicators and analyses are by Rolf Bertschi.

Explanations

For a more detailed explanation of the Trend and Momentum Models applied in this Chart Outlook, please see

www.chartoutlook.com

www.rolfbertschi.ch

E-Mail

rolf.bertschi@chartoutlook.ch

FinChartOutlook GmbH, Rolf P. Bertschi, Dörflistrasse 17, 8903 Birmensdorf ZH, Switzerland