

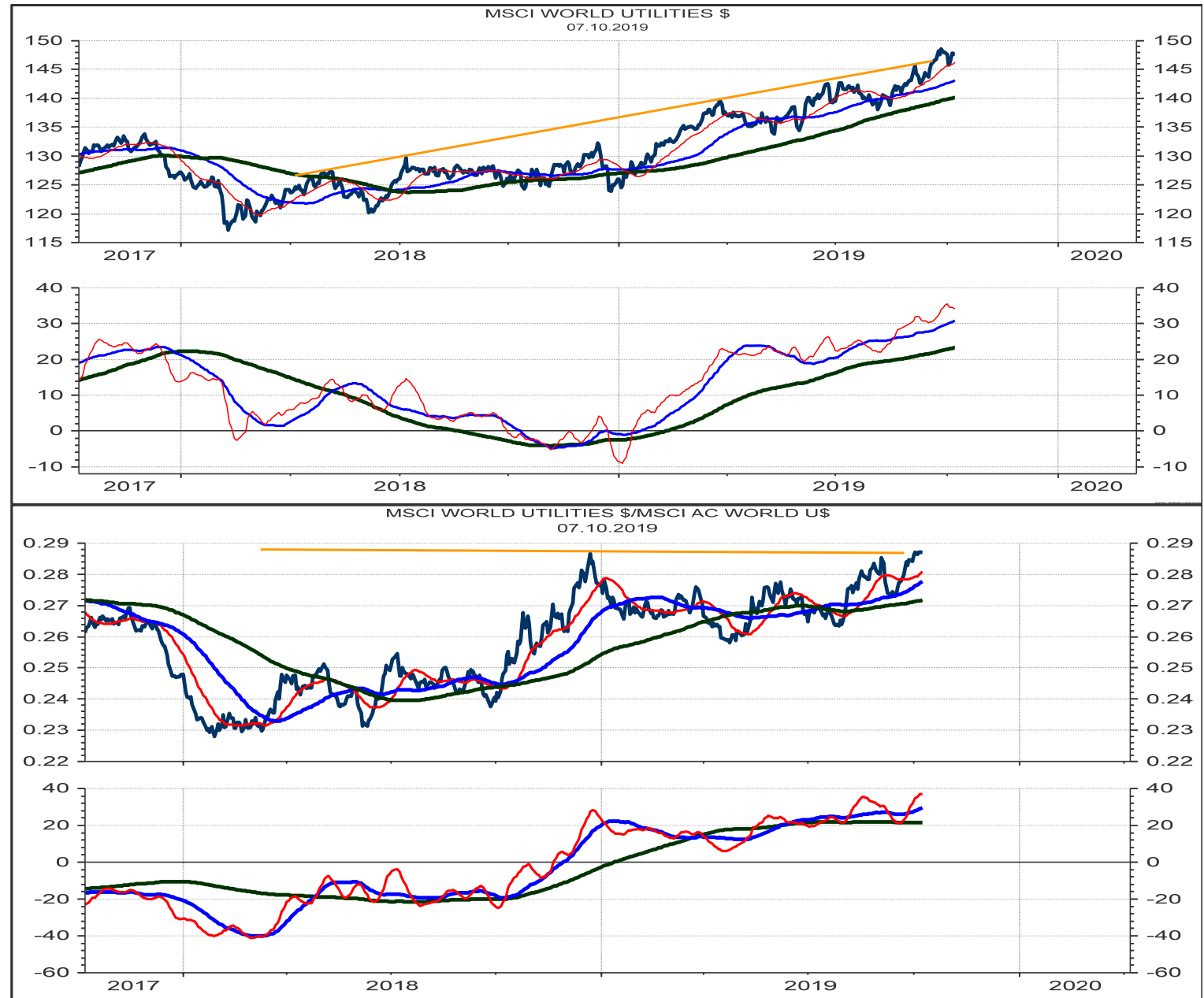


GLOBAL CHART OUTLOOK

8th October 2019
Global Equities

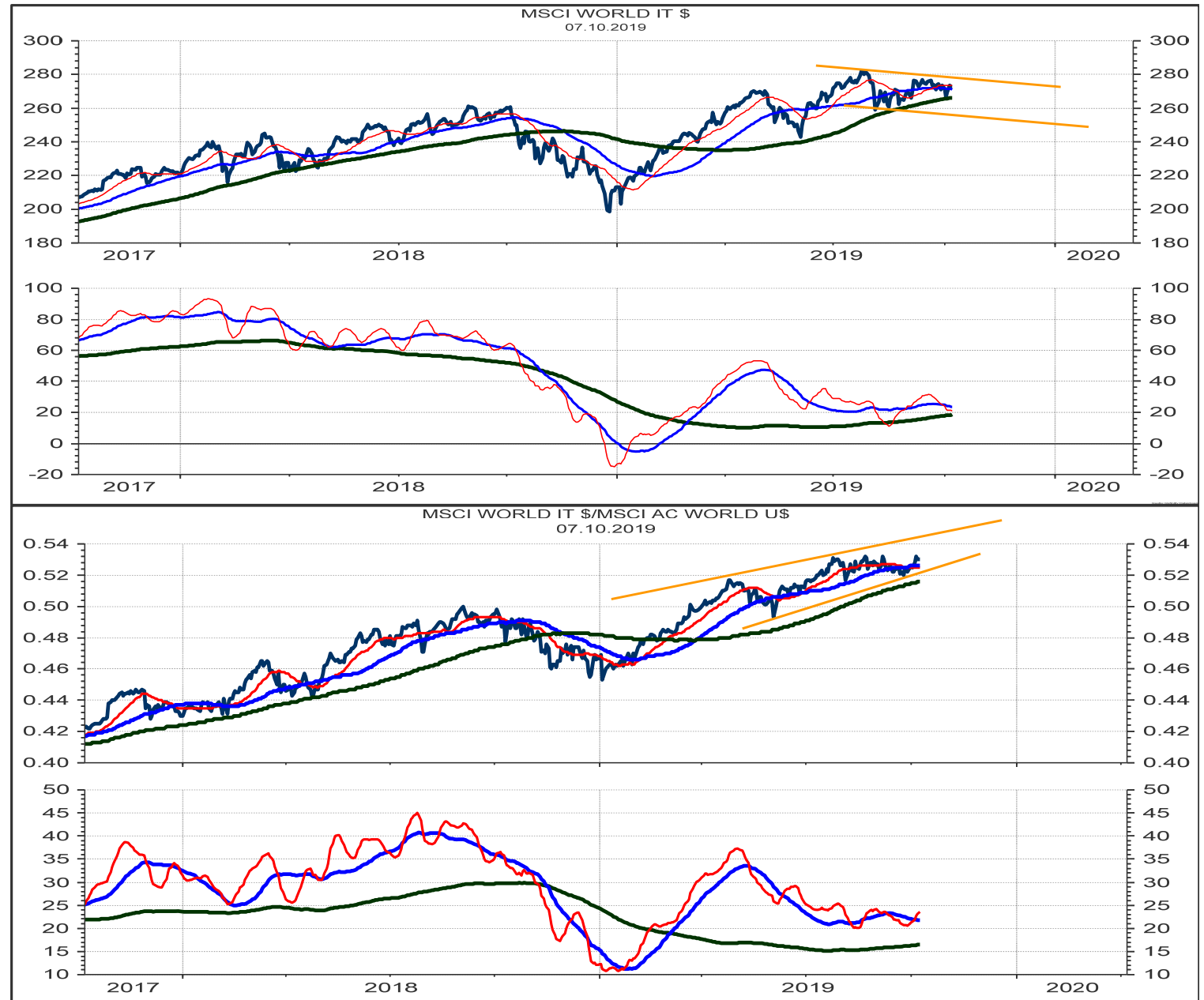
MSCI World Utilities absolute (top) and relative to the MSCI World Index (bottom)

It remains unclear if the uptrend in the World Utility Index can accelerate to signal higher targets, worth investing in. The relative chart (bottom) to the MSCI World Index has just reached the previous relative high. I am watching for the relative chart to either turn down for a setback or, for a 10-month breakout to signal a continuation of the sector's relative outperformance. If interest rates will move lower again (also in the USA), the stock market could rise to reach a dividend yield of Zero.... Utilities could surge ahead under such a scenario. I do not rule out substantially higher stock markets until 2024. However presently, the chart constellation rather indicate a medium-term downleg (in 4Q) before the uptrend resumes. I will watch the utilities closely. For now, I am still long Duke Energy.



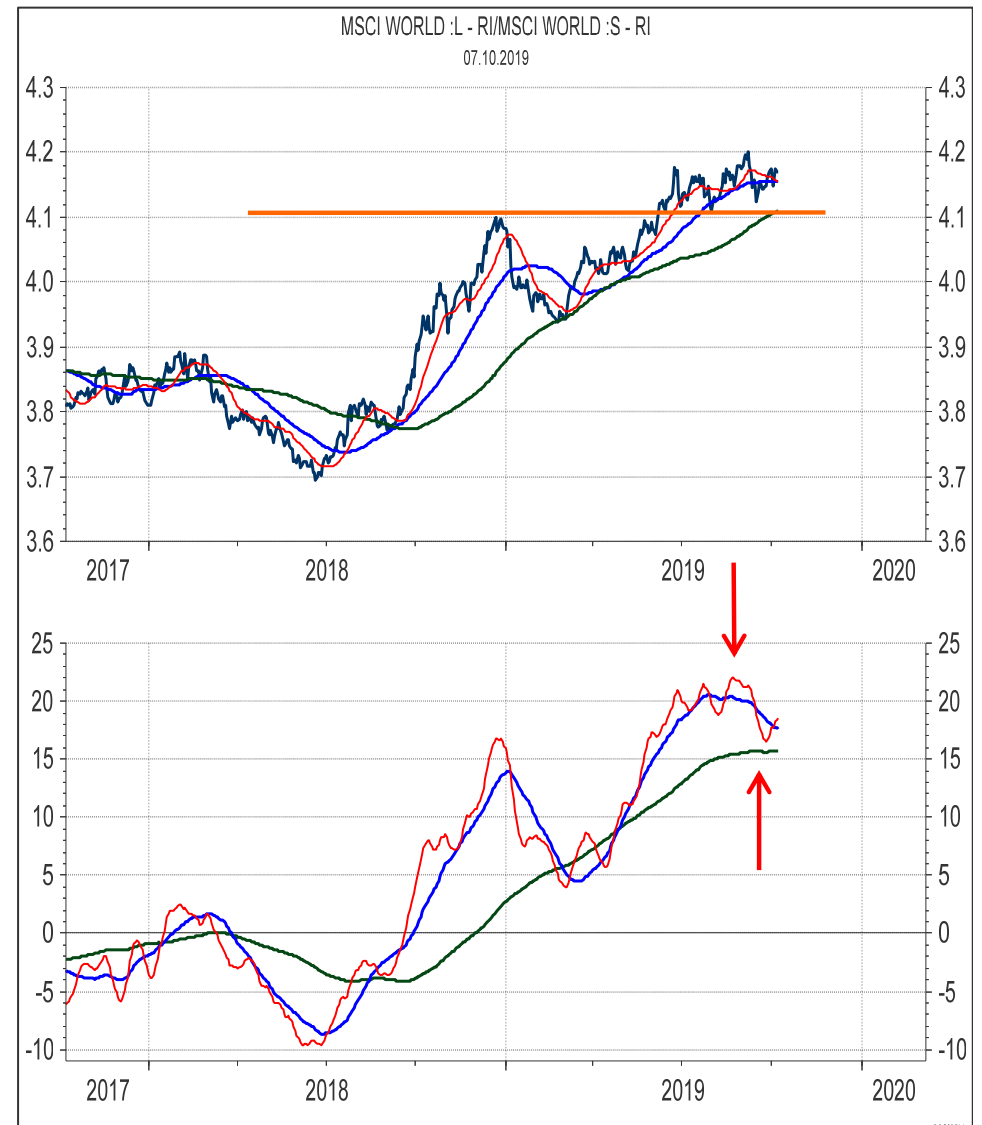
MSCI World Information Technology absolute (top) and relative to the MSCI World Index (bottom)

It remains unclear if the uptrend in the World IT Index is topping or just consolidating. The relative chart (bottom) to the MSCI World Index has moved sideways and a final upleg to meet the upper (orange) resistance line could still be seen next. Clearly, a break of the absolute 144-day average and of the lower (orange) downtrend channel line (upper chart) would signal a major downturn in the IT sector.



MSCI World Value relative to Growth (left) and Largecap relative to Smallcap (right)

The Short-term Momentum Indicator (red) of the Value Index is declining as expected. The Short-term Momentum Indicator (red) of the LargeCap Index is rebounding as expected. But, it will take for another 2-3 weeks to signal a possible major turn in the two indices. For now, the **MEDIUM-TERM OUTLOOK** remains **NEUTRAL VALUE** and **NEUTRAL GROWTH** and **NEUTRAL LARGECAP AND NEUTRAL SMALLCAP**.



Swiss SPI 200 constituent stocks – listed according to the Score (range from 100% to 0%, 40%-60% is neutral)

Out of the 200 stocks 26 stocks have a maximum positive score of 100%. Last week, there were 27 stocks with a maximum of 100%. The number of stocks with a total score of 0% has increased from last week's 13 stocks to this week's 23 stocks. This reflects a further technical deterioration. The Total Score of all 200 stocks is 49% and is thus rated NEUTRAL.

100%	HYPO BK LENZN N	HBLN.S
100%	BELIMO HOLDING N	BEAN.S
100%	VALORA N	VALN.S
100%	ELMA N	ELMN.S
100%	VETROPACK I	VET.S
100%	GURIT I	GUR.S
100%	BVZ HOLDING AG	BVZN.S
100%	SWISSCOM N	SCMN.S
100%	BARRY CALLEBAUT	BARN.S
100%	PERFECT HOLDING	PRFN.S
100%	CLARIANT N	CLN.S
100%	HELVETIA HLDG	HELN.S
100%	STRAUMANN HLD N	STMN.S
100%	EMS-CHEMIE N	EMSN.S
100%	YPSOMED HOLDING	YPSN.S
100%	VAUDOISE VERS N	VAHN.S
100%	IVF HARTMANN	VBSN.S
100%	GLARNER KB N	GLKBN.S
100%	INTERSHOP N	ISN.S
100%	ZEHNDER I	ZEHN.S
100%	PLAZZA AG	PLANZ.S
100%	GALENICA	GALE.S
100%	LANDIS GYR	LANDI.S
100%	CEVA LOGISTICS N	CEVAL.S
100%	SIKA	SIKA.S
100%	LASTMINUTE ORD	LMN.S
94%	GR KTBK PS	GRKP.S
94%	GIVAUDAN N	GIVN.S
94%	INFICON N	IFCN.S
94%	ZURICH INSURANCE	ZURN.S
94%	BCV N	BCVN.S
94%	IMPLENIA N	IMPN.S
94%	ARBONIA AG	ARBNO.S
94%	CALIDA HLD N	CALN.S
94%	SWISS RE N	SRENH.S
94%	ZUG ESTATE HLD	ZUGN.S
94%	THURGAUER KB PS	TKBP.S
94%	CONZZETA HLDNG I	CONC.S
94%	MOLECULAR PARTNE	MOLN.S
94%	VARIA US PROP	VARN.S
94%	KUROS BIOSCIENCE	KURN.S
89%	BK LINTH LLB AG	LINN.S
89%	KOMAX N	KOMN.S
89%	BELLEVUE GRP N	BBN.S
89%	BKW N	BKWB.S
89%	SENSIRION N	SENSI.S
83%	SWISS PRIME SITE	SPSN.S
83%	LINDT & SP N	LISN.S
83%	SCHWEITER I	SWTQ.S
83%	MOBIMO HLDG	MOBN.S
83%	ROCHE HOLDING AG	ROG.S
83%	SONOVA H AG	SOON.S
83%	JUNGFRAUBAHN N	JFN.S

83%	PSP CH PRPTY N	PSPN.S
83%	KUEHNE & NAGEL	KNIN.S
83%	LOGITECH	LOGN.S
83%	SIG COMB GRP N	SIGNC.S
83%	GEBERIT N1	GEBN.S
83%	DAETWYL I	DAE.S
83%	ORIOR N	ORON.S
83%	MOBILEZONE HLD I	MOZN.S
83%	FLUGHAFEN ZURICH	FHZN.S
83%	INVESTIS N	IREN.S
83%	VIFOR PHARMA	VIFN.S
78%	WARTECH N	WARN.S
78%	AIRESES SA	AIRE.S
78%	BASILEA PHARMA	BSLN.S
78%	BALOISE HLD N	BALN.S
78%	HOCHELDORF N	HOCN.S
78%	TITL BN BERG N	TIBN.S
78%	CEMBRA MONEY BAN	CMBN.S
78%	LIECH LANDBK	LILN.S
72%	ARUNDEL AG	ARONL.S
72%	STADLER RAIL	SRAIL.S
72%	RIETER N	RIEN.S
72%	ALLREAL HLD N	ALLN.S
72%	PARGESA I	PARG.S
67%	CI COM SA I	CIE.S
67%	PRIVATE EQUITY N	PEHN.S
67%	BOBST GRP N	BOBNN.S
67%	NESTLE SA	NESN.S
67%	DKSH N	DKSH.S
67%	VAT GROUP N	VACN.S
67%	ASMALLWORLD N	ASWN.S
67%	NEWRON PHARMA N	NWRN.S
61%	FISCHER N	FIN.S
61%	BUCHER N	BUCN.S
61%	CICOR TECH	CICN.S
61%	BASLER KTBK PS	BSKP.S
61%	SCHINDLER N	SCHN.S
61%	MEYER BURGER N	MBTN.S
61%	BELL FOOD GROUP	BELL.S
56%	SNB N	SNBN.S
56%	SCHAFFNER N	SAHN.S
56%	BACHEM HOLD N	BANB.S
56%	SIEGFRIED N	SFZN.S
56%	JULIUS BAER N	BAER.S
56%	SFS GROUP	SFSN.S
56%	SUNRISE N	SRGN.S
50%	AMS	AMS.S
50%	HIGHL EVNT & ENT	HLEE.S
50%	BERNER KB N	BEKN.S
50%	EDISUN POWER	ESUN.S
50%	LALIQUE	LLQ.S
50%	MCH GROUP AG	MCHN.S
50%	WALLISER KTBK	WKB.S

50%	IDORSIA N	IDIA.S
44%	FEINTOOL N	FTON.S
44%	ADECCO N	ADEN.S
44%	POENINA	PNHO.S
44%	VP BANK AG	VPBN.S
39%	SWISSQUOTE GRP N	SQN.S
39%	BFW LIEGENSCH N	BLIN.S
39%	ALSO HLD AG	ALSN.S
39%	SCHINDLER PS	SCHP.S
39%	BURKHALTER AG	BRKN.S
33%	SCHMOLZ+BICKENB	STLN.S
33%	LINDT & SP PS	LISP.S
33%	SWISS FIN&PROP	SFPN.S
33%	POLYPHOR N	POLN.S
33%	BOSSARD N	BOS.S
28%	CHAM GROUP AG	CHAMA.S
28%	PANALPINA WELT	PWTN.S
28%	O FUSSLI N	OFN.S
28%	ADVAL TECH N	ADVN.S
28%	CREALOGIX HLDG	CLXN.S
28%	EVOLVA HOLD AG	EVE.S
28%	U-BLOX N	UBXN.S
28%	SULZER N	SUN.S
28%	ARYZTA AG	ARYN.S
28%	BLACKSTONE RES	BLS.S
28%	WISEKEY N	WIHN.S
28%	COMET HOLDING	COTNE.S
22%	GAVAZZI CARLO I	GAV.S
22%	AEVIS HOLDING SA	AEVS.S
22%	APG SGA	APGN.S
22%	ORASCOM DEV H	ODHN.S
22%	RELIEF THERAPEUT	RLFB.S
22%	PEACH PROP	PEAN.S
22%	PERROT DUVAL I1	PEDU.S
22%	ZUEBLIN N	ZUBN.S
22%	MEDACTA GROUP	MOVE.S
17%	ZUGER KB I	ZG.S
17%	BASELLAND KTBK	BLKB.S
17%	SGS N	SGSN.S
17%	VON ROLL I	ROL.S
17%	FORBO N	FORN.S
17%	SPICE PRIV AG	SPCE.S
17%	TAMEDIA N	TAMN.S
17%	ST GALLER KB N	SGKN.S
17%	SWATCH GROUP N	UHRN.S
17%	SWATCH GROUP I	UHR.S
17%	EMMI N	EMMN.S
17%	GRP MINOTERIES	GMI.S
17%	LEM HOLDING N	LEHN.S
17%	DUFY AG	DUFN.S
17%	PARTNERS GROUPAG	PGHN.S
17%	COLTENE N	CLTN.S
17%	BURCKHARDT	BCHN.S

17%	ROMANDE ENERGIE	HREN.S
17%	SANTHERA PHARMA	SANN.S
17%	VZ HOLDING N	VZN.S
17%	METALL ZUG	METN.S
17%	AUTONEUM N	AUTON.S
17%	HIAG IMMOBILIEN	HIAG.S
17%	UBS GROUP N	UBSG.S
11%	PHOENIX I	PM.S
11%	SCHLATTER N	STRN.S
11%	STARRAG N	STGN.S
11%	INTERROLL N	INRN.S
11%	TORNOS HOLDING N	TOHN.S
11%	DORMAKABA HOLD	DOKA.S
11%	NOVARTIS N	NOVN.S
11%	TECAN HLD N	TECN.S
11%	CS GROUP AG	CSGN.S
11%	LAFARGEHOLCIM	LHN.S
11%	ABB LTD N	ABBN.S
11%	KUDELSKI	KUD.S
11%	LONZA GRP AG N	LONN.S
11%	ZUR ROSE GROUP N	ROSEG.S
11%	GAM N	GAMH.S
11%	MEIER TOBLER GRO	METG.S
11%	RICHEMONT N	CFR.S
11%	BQ CANT DU JURA	BCJ.S
11%	MEDARTIS	MEDA.S
6%	MIKRON N	MIKN.S
6%	VALIANT N	VATN.S
6%	CASSIOPEA N	SKIN.S
0%	KTM INDUSTRIES/d	KTMI.VI
0%	OC OERLIKON CORP	OERL.S
0%	CPH CHEM&PAPER	CPHN.S
0%	VILLARS N	VILN.S
0%	ZWAHLEN & MAYR	ZWM.S
0%	ASCOM N	ASCN.S
0%	LUZERNER KB N	LUKN.S
0%	VONTOBEL N	VONN.S
0%	TEMENOS N	TEMN.S
0%	CIE FIN TR I	CFT.S
0%	SWISS LIFE HLDG	SLHN.S
0%	BB BIOTECH ORD	BION.S
0%	EFG INT N	EFGN.S
0%	HUBER & S N	HUBN.S
0%	KARDEX I	KARN.S
0%	LECLANCHE N	LECN.S
0%	LEONTEQ	LEON.S
0%	ALCON N	ALCC.S
0%	OBSEVA SA/d	OBSV.O
0%	BC GENEVE P	BCGE.S
0%	VALARTIS GROUP	VLRT.S
0%	KLINGELNBERG N	KLIN.S
0%	COSMO PHARM N	COPN.S

Swiss Market Index 20 constituent stocks

SCORE	COMPANY	RIC	PRICE	LT	MT	ST	COMMENT	DATE	PRICE	PROFIT
								BOUGHT	BOUGHT	or LOSS
11%	ABB LTD N	ABBN.S	17.92	do	dd-	d-	see chart			
44%	ADECCO N	ADEN.S	53.34	do	+	d-				
0%	ALCON N	ALCC.S	56.55	na	-	-	see chart			
11%	CS GROUP AG	CSGN.S	11.43	do	dd-	-	see chart			
83%	GEBERIT N1	GEBN.S	460.20	+	+	dd-	TOOK PROFIT OF 7% with the break of 469. Major support is 452 and 447.			
94%	GIVAUDAN N	GIVN.S	2'753.00	+	+	+	Hold. Supports are 2735, 2705 and 2680.	11.09.2019	2782.00	-1.04%
11%	LAFARGEHOLCIM	LHN.S	46.01	do	dd-	d-				
11%	LONZA GRP AG N	LONN.S	327.30	do	-	d-	Entered a medium-term correction. Supports are 318 and 297.			
67%	NESTLE SA	NESN.S	108.02	+	o	+	see chart			
11%	NOVARTIS N	NOVN.S	85.55	d-	-	+	see chart	24.05.2019	85.55	0.00%
11%	RICHEMONT N	CFR.S	69.08	o	-	-	Support is at 67.50 or 58.50.			
83%	ROCHE HOLDING AG	ROG.S	288.25	+	+	+	see chart	24.05.2019	272.10	5.94%
17%	SGS N	SGSN.S	2'385.00	d-	do	d-				
100%	SIKA	SIKA.S	156.90	u+	+	uu+	Must rise above 160 to signal 170 or 184/187. Looking for a correction at 160.			
0%	SWISS LIFE HLDG	SLHN.S	468.00	dd-	d-	-	Major support is at 455 and 448.			
94%	SWISS RE N	SRENH.S	102.60	+	+	+	Next resistances are 105.70, 106.50, 107 or 109 / 110. I expect a top around 107.			
100%	SWISSCOM N	SCMN.S	499.60	+	+	+				
17%	SWATCH GROUP I	UHR.S	252.20	o	-	uo				
17%	UBS GROUP N	UBSG.S	10.55	d-	do	d-				
94%	ZURICH INSURANCE	ZURN.S	379.30	+	+	+	Likely to rise to 410 or 440.	10.09.2019	374.00	1.42%

Swiss Performance Index 200 stocks – listed alphabetically (A-Co)

SCORE	COMPANY	RIC	PRICE	LT	MT	ST	COMMENT	DATE BOUGHT	PRICE BOUGHT	PROFIT or LOSS
11%	ABB LTD N	ABBN.S	17.92	do	dd-	d-	see chart			
44%	ADECCO N	ADEN.S	53.34	do	+	d-				
28%	ADVAL TECH N	ADVN.S	163.00	o	do	dd-				
22%	AEVIS HOLDING SA	AEVS.S	12.45	do	dd-	dd-				
78%	AIREIS SA	AIRE.S	1.27	+	+	do				
0%	ALCON N	ALCC.S	56.55	na	-	-	see chart			
72%	ALLREAL HLD N	ALLN.S	189.60	+	+	do	TOOK PROFIT of 10%. Remains in a consolidation.			
39%	ALSO HLD AG	ALSN.S	143.20	+	-	uo				
50%	AMS	AMS.S	43.65	+	do	-				
22%	APG SGA	APGN.S	265.00	+	dd-	d-	Must hold above 259 or a sell signal will be triggered.	11.09.2019	273.20	-3.00%
94%	ARBONIA AG	ARBNO.S	12.00	+	+	+				
72%	ARUNDEL AG	ARONL.S	2.10	+	+	dd-				
28%	ARYZTA AG	ARYN.S	0.70	o	o	-				
0%	ASCOM N	ASCN.S	10.14	-	d-	dd-				
67%	ASMALLWORLD N	ASWN.S	2.92	+	+	d-				
17%	AUTONEUM N	AUTON.S	96.55	-	do	-				
56%	BACHEM HLD N	BANB.S	142.60	+	do	o	Sell the position if 135 is broken. Lower support is 132, 129.50 or 124.	20.08.2019	134.60	5.94%
78%	BALOISE HLD N	BALN.S	177.60	+	+	+				
100%	BARRY CALLEBAUT	BARN.S	2'068.00	+	+	+	Reaching the high from January 2018 at 2100. Correction is likely from this high.			
17%	BASELLAND KTBK	BLKB.S	908.00	d-	do	dd-				
78%	BASILEA PHARMA	BSLN.S	42.36	+	+	uu+				
61%	BASLER KTBK PS	BSKP.S	72.40	-	+	u+				
0%	BB BIOTECH ORD	BION.S	60.35	-	d-	-				
0%	BC GENEVE P	BCGE.S	195.50	-	-	dd-				
94%	BCV N	BCVN.S	766.00	u+	+	+				
100%	BELIMO HOLDING N	BEAN.S	5'840.00	u+	+	+	Must rise above 5950 / 6000 to signal 6250, 6450 or 6750. Could top at 5950.			
61%	BELL FOOD GROUP	BELL.S	268.50	d-	+	+				
89%	BELLEVUE GRP N	BBN.S	22.40	+	+	do				
50%	BERNER KB N	BEKN.S	215.50	-	uu+	uu+				
39%	BFW LIEGENSCH N	BLIN.S	43.40	+	d-	do				
89%	BK LINTH LLB AG	LINN.S	480.00	o	uu+	u+				
89%	BKW N	BKWB.S	74.00	+	+	+				
28%	BLACKSTONE RES	BLS.S	1.03	o	do	dd-				
67%	BOBST GRP N	BOBNN.S	49.12	o	+	o				
33%	BOSSARD N	BOS.S	134.60	o	do	o				
11%	BQ CANT DU JURA	BCJ.S	55.50	o	-	-				
61%	BUCHER N	BUCN.S	300.00	do	+	d-	Sell the position if 296 is broken. Could extend the downtrend to supports 286, 282.	10.09.2019	312.20	-3.91%
17%	BURCKHARDT	BCHN.S	239.50	d-	do	-				
39%	BURKHALTER AG	BRKN.S	72.50	o	uo	uu+	Short-term selloff lowered the long-term support to 69.			
100%	BVZ HOLDING AG	BVZN.S	1'130.00	+	+	+				
94%	CALIDA HLD N	CALN.S	30.60	+	+	+	Postponing purchase until the next short-term correction.			
6%	CASSIOPEA N	SKIN.S	39.00	-	-	do				
78%	CEMBRA MONEY BAN	CMBN.S	103.30	+	+	+	Likely to enter a correction from resistance between 105 and 107.			
100%	CEVA LOGISTICS N	CEVAL.S	30.00	u+	+	+				
28%	CHAM GROUP AG	CHAMA.S	418.00	uo	-	u+				
67%	CI COM SA I	CIE.S	2.46	o	+	uo				
61%	CICOR TECH	CICN.S	48.30	o	+	d-				
0%	CIE FIN TR I	CFT.S	101.00	dd-	dd-	dd-				
100%	CLARIANT N	CLN.S	19.65	+	+	uu+				
17%	COLTENE N	CLTN.S	77.10	-	do	dd-				
28%	COMET HOLDING	COTNE.S	84.25	o	do	dd-				
94%	CONZZETA HLDNG I	CONC.S	853.00	+	+	+	Sold at a loss of 2%. Must rise above 870 to signal 910. Support is 815 and 785.			
0%	COSMO PHARM N	COPN.S	77.40	-	-	-				

SPI Index 200 constituent stocks - alphabetically (Co-La)

SCORE	COMPANY	RIC	PRICE	LT	MT	ST	COMMENT	DATE BOUGHT	PRICE BOUGHT	PROFIT or LOSS
0%	CPH CHEM&PAPER	CPHN.S	79.40	-	-	d-				
28%	CREALOGIX HLDG	CLXN.S	93.40	do	do	dd-				
11%	CS GROUP AG	CSGN.S	11.43	do	dd-	-	see chart			
83%	DAETWYL I	DAE.S	159.60	+	+	-	Hold.	11.09.2019	165.50	-3.56%
67%	DKSH N	DKSH.S	48.12	-	+	+				
11%	DORMAKABA HOLD	DOKA.S	634.50	d-	-	u+				
17%	DUFREY AG	DUFN.S	80.58	o	dd-	o				
50%	EDISUN POWER	ESUN.S	140.00	+	do	-				
0%	EFG INT N	EFGN.S	5.66	d-	dd-	-				
100%	ELMA N	ELMN.S	444.00	+	+	u+				
17%	EMMI N	EMMN.S	800.00	d-	o	dd-				
100%	EMS-CHEMIE N	EMS.N	625.00	+	+	+				
28%	EVOLVA HOLD AG	EVE.S	0.17	-	uo	uu+				
44%	FEINTOOL N	FTON.S	57.40	-	uu+	uu+				
61%	FISCHER N	FIN.S	841.00	do	+	d-				
83%	FLUGHAFEN ZURICH	FHZN.S	182.10	+	+	+	Must rise above 187 / 189 to signal a new upturn with targets 194 or 204.			
17%	FORBO N	FORN.S	1'449.00	-	o	dd-				
100%	GALENICA	GALE.S	57.70	+	+	+	Long-term resistance is at 57.80 / 59.50, a break of which would signal 62, 64 or 70.			
11%	GAM N	GAMH.S	3.55	o	dd-	-				
22%	GAVAZZI CARLO I	GAV.S	255.00	o	-	uu+				
83%	GEBERIT N1	GEBN.S	460.20	+	+	dd-	TOOK PROFIT OF 7% with the break of 469. Major support is 452 and 447.			
94%	GIVAUDAN N	GIVN.S	2'753.00	+	+	+	Hold. Supports are 2735, 2705 and 2680.	11.09.2019	2782.00	-1.04%
100%	GLARNER KB N	GLKBN.S	31.20	+	+	+				
94%	GR KTBK PS	GRKP.S	1'475.00	+	+	+				
17%	GRP MINOTERIES	GMI.S	358.00	-	do	dd-				
100%	GURIT I	GUR.S	1'390.00	+	+	+	Reached a short-term resistance at 1410. Watching for a pullback.			
100%	HELVETIA HLDG	HELN.S	137.10	+	+	+	Buy. The recent consolidation is likely to be followed by another new high.	08.10.2019	137.10	
17%	HIAG IMMOBILIEN	HIAG.S	116.00	-	-	+				
50%	HIGHL EVNT & ENT	HLEE.S	19.70	u+	o	-				
78%	HOCHDORF N	HOCN.S	78.50	o	+	+				
0%	HUBER & S N	HUBN.S	63.40	-	-	-				
100%	HYPO BK LENZB N	HBLN.S	4'500.00	uu+	uu+	u+				
50%	IDORSIA N	IDIA.S	24.22	+	o	d-				
94%	IMPLENIA N	IMP.N	38.14	+	+	+	Hold.	29.08.2019	32.10	18.82%
94%	INFICON N	IFCN.S	638.50	+	+	u+	Hold.	10.09.2019	645.40	-1.07%
11%	INTERROLL N	INRN.S	1'788.00	-	dd-	u+				
100%	INTERSHOP N	ISN.S	534.00	+	+	+				
83%	INVESTIS N	IREN.S	73.00	+	+	+				
100%	IVF HARTMANN	VBSN.S	162.00	+	u+	u+				
56%	JULIUS BAER N	BAER.S	41.65	+	+	dd-	Sell signal if 39 is broken.	10.09.2019	43.30	-3.81%
83%	JUNGFRAUBAHN N	JFN.S	155.00	+	+	+				
0%	KARDEX I	KARN.S	135.00	-	d-	-	Sold at a loss of 4.5%. Could break the long-term support at 129 and signal 118 / 103.			
0%	KLINGELNBERG N	KLIN.S	28.80	d-	-	-				
89%	KOMAX N	KOMN.S	207.20	+	+	+	Hold.	10.09.2019	204.40	1.37%
0%	KTM INDUSTRIES/d	KTMI.VI	49.00	-	-	-				
11%	KUDELSKI	KUD.S	5.90	o	d-	-				
83%	KUEHNE & NAGEL	KNIN.S	147.65	+	+	uu+				
94%	KUROS BIOSCIENCE	KURN.S	2.75	+	+	+				
11%	LAFARGEHOLCIM	LHN.S	46.01	do	dd-	d-				
50%	LALIQUE	LLQ.S	38.80	-	+	+				
100%	LANDIS GYR	LANDI.S	89.85	+	+	+				
100%	LASTMINUTE ORD	LMN.S	36.10	+	+	+				
0%	LECLANCHE N	LECN.S	1.47	-	-	-				

SPI Index 200 constituent stocks - alphabetically (La-Se)

SCORE	COMPANY	RIC	PRICE	LT	MT	ST	COMMENT	DATE BOUGHT	PRICE BOUGHT	PROFIT or LOSS
17%	LEM HOLDING N	LEHN.S	1'184.00	o	-	uo				
0%	LEONTEQ	LEON.S	29.38	-	dd-	dd-				
78%	LIECH LANDBK	LLBN.S	63.20	o	+	+				
83%	LINDT & SP N	LISN.S	81'800.00	+	+	+				
33%	LINDT & SP PS	LISP.S	7'250.00	+	d-	dd-				
83%	LOGITECH	LOGN.S	40.38	+	+	uu+				
11%	LONZA GRP AG N	LONN.S	327.30	do	-	d-	Entered a medium-term correction. Supports are 318 and 297.			
0%	LUZERNER KB N	LUKN.S	405.00	-	d-	-				
50%	MCH GROUP AG	MCHN.S	23.20	+	do	dd-				
22%	MEDACTA GROUP	MOVE.S	82.00	-	uo	o	Must rise above 84, 87 to signal 91 or 99.			
11%	MEDARTIS	MEDA.S	44.05	-	-	uu+				
11%	MEIER TOBLER GRO	METG.S	14.50	o	d-	dd-				
17%	METALL ZUG	METN.S	1'985.00	-	o	-				
61%	MEYER BURGER N	MBTN.S	0.40	o	+	dd-				
6%	MIKRON N	MIKN.S	7.20	d-	-	o				
83%	MOBILEZONE HLD I	MOZN.S	9.98	u+	+	u+				
83%	MOBIMO HLDG	MOBN.S	282.00	+	+	+				
94%	MOLECULAR PARTNE	MOLN.S	17.66	+	+	+				
67%	NESTLE SA	NESN.S	108.02	+	o	+	see chart			
67%	NEWRON PHARMA N	NWRN.S	6.00	-	u+	uu+				
11%	NOVARTIS N	NOVN.S	85.55	d-	-	+	see chart	24.05.2019	85.55	0.00%
28%	O FUESSL I N	OFN.S	91.50	do	do	-				
0%	OBSEVA SA/d	OBSV.O	7.30	d-	d-	-				
0%	OC OERLIKON CORP	OERL.S	9.42	d-	dd-	d-				
22%	ORASCOM DEV H	ODHN.S	14.90	o	dd-	-	Remains in the large T triangle from early 2018.			
83%	ORIOR N	ORON.S	85.10	+	+	+				
28%	PANALPINA WELT	PWTN.S	219.20	do	-	o				
72%	PARGESA I	PARG.S	75.00	+	+	dd-				
17%	PARTNERS GROUPAG	PGHN.S	753.20	o	-	do	Major sell signal to be triggered if the support range 740 / 725 is broken.			
22%	PEACH PROP	PEAN.S	31.70	do	d-	d-	Sell the position if 31.30 is broken. Reaching the loss tolerance of 8%. Support 30.50.	27.06.2019	34.10	-7.04%
100%	PERFECT HOLDING	PRFN.S	0.02	+	+	+				
22%	PERROT DUVAL I1	PEDU.S	119.00	+	-	-				
11%	PHOENIX I	PM.S	387.50	-	-	uu+				
100%	PLAZZA AG	PLANZ.S	255.00	+	u+	u+				
44%	POENINA	PNHO.S	45.40	o	+	dd-				
33%	POLYPHOR N	POLN.S	5.85	d-	+	-				
67%	PRIVATE EQUITY N	PEHN.S	58.50	o	+	do				
83%	PSP CH PRPTY N	PSPN.S	130.30	+	u+	+				
22%	RELIEF THERAPEUT	RLFBS	0.0014	-	o	o				
11%	RICHEMONT N	CFR.S	69.08	o	-	-	Support is at 67.50 or 58.50.			
72%	RIETER N	RIEN.S	138.50	+	+	d-				
83%	ROCHE HOLDING AG	ROG.S	288.25	+	+	+	see chart	24.05.2019	272.10	5.94%
17%	ROMANDE ENERGIE	HREN.S	1'200.00	do	d-	do				
17%	SANTHERA PHARMA	SANN.S	12.26	o	d-	do				
56%	SCHAFFNER N	SAHN.S	208.00	d-	+	o				
61%	SCHINDLER N	SCHN.S	217.40	+	do	uu+				
39%	SCHINDLER PS	SCHP.S	217.90	+	dd-	uo				
11%	SCHLATTER N	STRN.S	36.80	uo	-	-				
33%	SCHMOLZ+BICKENB	STLN.S	0.25	-	uo	+				
83%	SCHWEITER I	SWTQ.S	955.00	+	+	+				
89%	SENSIRION N	SENSI.S	42.10	+	+	do	Hold.	27.08.2019	37.50	12.27%
56%	SFS GROUP	SFSN.S	76.05	d-	+	do				
17%	SGS N	SGSN.S	2'385.00	d-	do	d-				

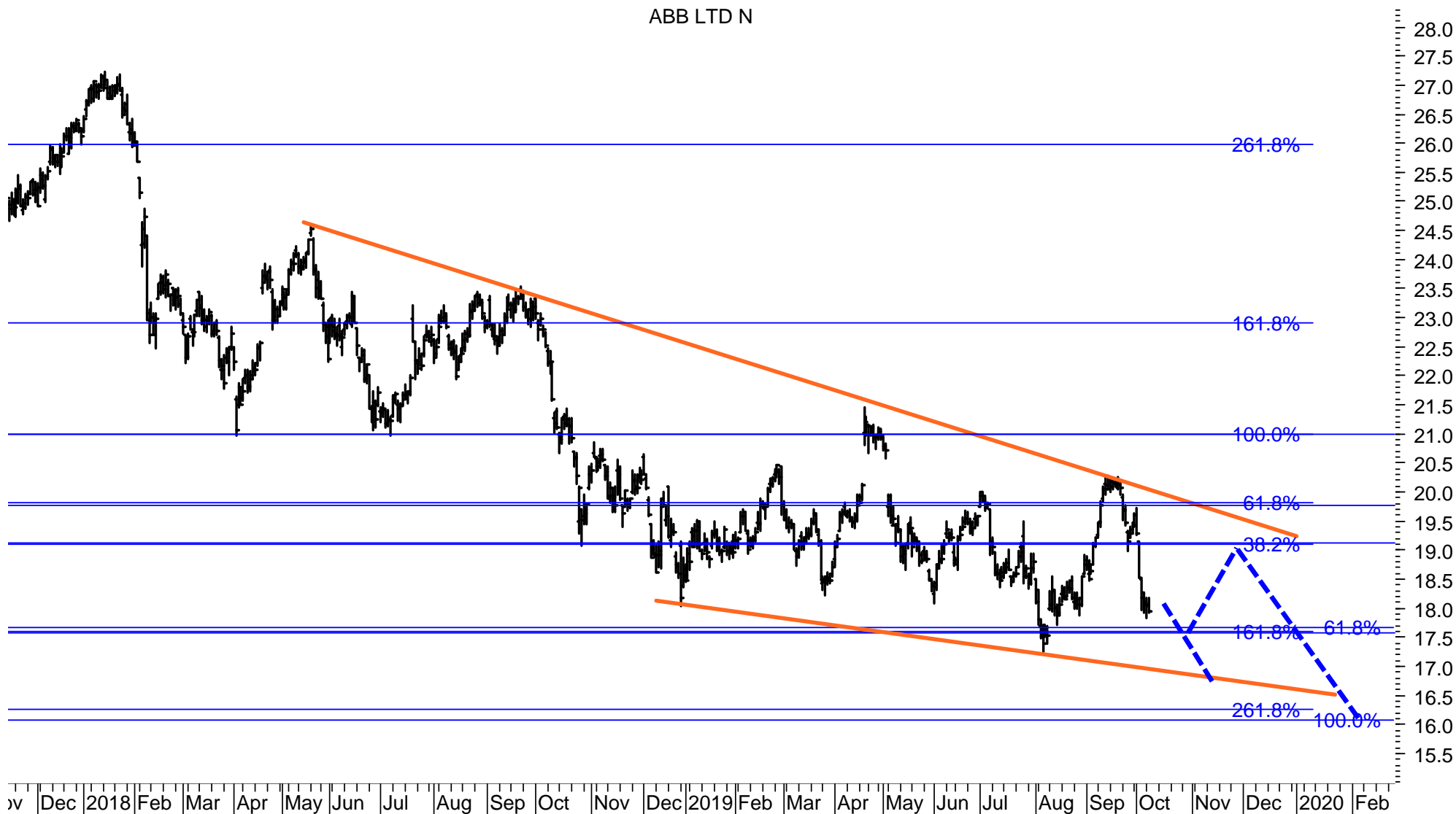
SPI Index 200 constituent stocks - alphabetically (Sf-Z)

SCORE	COMPANY	RIC	PRICE	LT	MT	ST	COMMENT	DATE BOUGHT	PRICE BOUGHT	PROFIT or LOSS
56%	SIEGFRIED N	SFZN.S	386.00	+	+	-	TOOK PROFIT of 9%. Supports are 385, 372, 367.			
83%	SIG COMB GRP N	SIGNC.S	13.48	+	+	+	Next target is 14.10.	24.07.2019	11.20	20.36%
100%	SIKA	SIKA.S	156.90	u+	+	uu+	Must rise above 160 to signal 170 or 184/187. Looking for a correction at 160.			
56%	SNB N	SNBN.S	5'270.00	+	+	-				
83%	SONOVA H AG	SOON.S	231.40	+	+	+	Buy only if 233 is broken. Add to position if 237.50 is broken. Target 244 or 255.			
17%	SPICE PRIV AG	SPCE.S	21.80	do	dd-	do				
17%	ST GALLER KB N	SGKN.S	424.00	d-	do	d-				
72%	STADLER RAIL	SRAIL.S	45.20	na	+	+	Must rise above 46.10 to signal 47.50 or 50. Supports are 43.70, 42.70 or 41.50.	20.09.2019	45.25	-0.11%
11%	STARRAG N	STGN.S	45.80	o	dd-	dd-				
100%	STRAUMANN HLD N	STMN.S	830.80	u+	+	+	Must rise above 845 to signal 865 / 880 or 910 / 935.			
28%	SULZER N	SUN.S	94.65	o	do	d-				
56%	SUNRISE N	SRCG.S	77.05	+	+	dd-	Uptrend from August has topped. Sell signal if 76 is broken. Supports 75.20, 74.50, 73.	20.08.2019	78.25	-1.53%
17%	SWATCH GROUP I	UHR.S	252.20	o	-	uo				
17%	SWATCH GROUP N	UHRN.S	47.62	o	-	uo				
33%	SWISS FIN&PROP	SFPN.S	93.50	+	d-	dd-				
0%	SWISS LIFE HLDG	SLHN.S	468.00	dd-	d-	-	Major support is at 455 and 448.			
83%	SWISS PRIME SITE	SPSN.S	99.50	+	+	+	TOOK PROFIT of 16%.			
94%	SWISS RE N	SRENH.S	102.60	+	+	+	Next resistances are 105.70, 106.50, 107 or 109 / 110. I expect a top around 107.			
100%	SWISSCOM N	SCMN.S	499.60	+	+	+				
39%	SWISSQUOTE GRP N	SQN.S	41.22	+	o	-				
17%	TAMEDIA N	TAMN.S	97.00	o	-	uo				
11%	TECAN HLD N	TECN.S	229.20	o	-	d-				
0%	TEMENOS N	TEMN.S	164.00	d-	d-	dd-				
94%	THURGAUER KB PS	TKBP.S	108.50	+	+	+				
78%	TITL BN BERG N	TIBN.S	352.00	+	+	do				
11%	TORNOS HOLDING N	TOHN.S	6.97	o	d-	dd-				
28%	U-BLOX N	UBXN.S	70.85	o	o	-	Remains in the downtrend from 81. Support is 68 and 61.			
17%	UBS GROUP N	UBSG.S	10.55	d-	do	d-				
0%	VALARTIS GROUP	VLRT.S	10.20	-	d-	dd-				
6%	VALIANT N	VATN.S	98.10	-	-	uo				
100%	VALORA N	VALN.S	276.50	+	uu+	uu+				
94%	VARIA US PROP	VARN.S	37.80	+	+	+				
67%	VAT GROU P N	VACN.S	125.05	+	+	-	Sell the position. Uptrend from December 2018 has topped.	10.09.2019	130.70	-4.32%
100%	VAUDOISE VERS N	VAHN.S	542.00	+	+	+	Buy only if the long-term resistance at 555 is broken. Target 580 or 610 / 630.			
100%	VETROPACK I	VET.S	2'630.00	+	+	u+	Hold.	29.08.2019	2485.00	5.84%
83%	VIFOR PHARMA	VIFN.S	163.05	+	+	u+	Hold.	11.06.2019	143.10	13.94%
0%	VILLARS N	VILN.S	740.00	-	d-	d-				
17%	VON ROLL I	ROL.S	0.83	-	do	dd-				
0%	VONTOBEL N	VONN.S	51.15	d-	dd-	d-				
44%	VP BANK AG	VPBN.S	154.00	+	d-	+				
17%	VZ HOLDING N	VZN.S	282.50	-	o	-				
50%	WALLISER KTBK	WKB.S	114.50	-	u+	+				
78%	WARTECK N	WARN.S	1'990.00	+	+	+				
28%	WISEKEY N	WIHN.S	2.45	do	do	dd-				
100%	YPSOMED HOLDING	YPSN.S	136.60	+	u+	u+	BUY if the resistance range 139 / 143 is broken. Target 150, 155, 165/175.			
100%	ZEHNDER I	ZEHN.S	40.10	+	+	+				
22%	ZUEBLIN N	ZUBN.S	26.00	do	dd-	dd-				
94%	ZUG ESTATE HLD	ZUGN.S	2'030.00	+	+	u+				
17%	ZUGER KB I	ZG.S	6'020.00	-	-	u+				
11%	ZUR ROSE GROUP N	ROSEG.S	85.50	uo	-	d-				
94%	ZURICH INSURANCE	ZURN.S	379.30	+	+	+	Likely to rise to 410 or 440.	10.09.2019	374.00	1.42%
0%	ZWAHLEN & MAYR	ZWM.S	250.00	-	-	-				

ABB – daily chart

ABB continues to form the downtrending Wedge, which originated in 2018.
Two Fibonacci support levels are clustered at 17,50, a break of which would signal a decline to 16 or 12.50.
The resistance levels are at 19.20, 19.80 and 21.

ABB LTD N



ALCON – hourly chart

Alcon broke the Horizontal Triangle, which was formed in August and the first half of September, to the downside. Three Fibonacci supports are clustered at 55. A rebound could start from this level. A failure to do so would signal a decline below the April 2019-low.

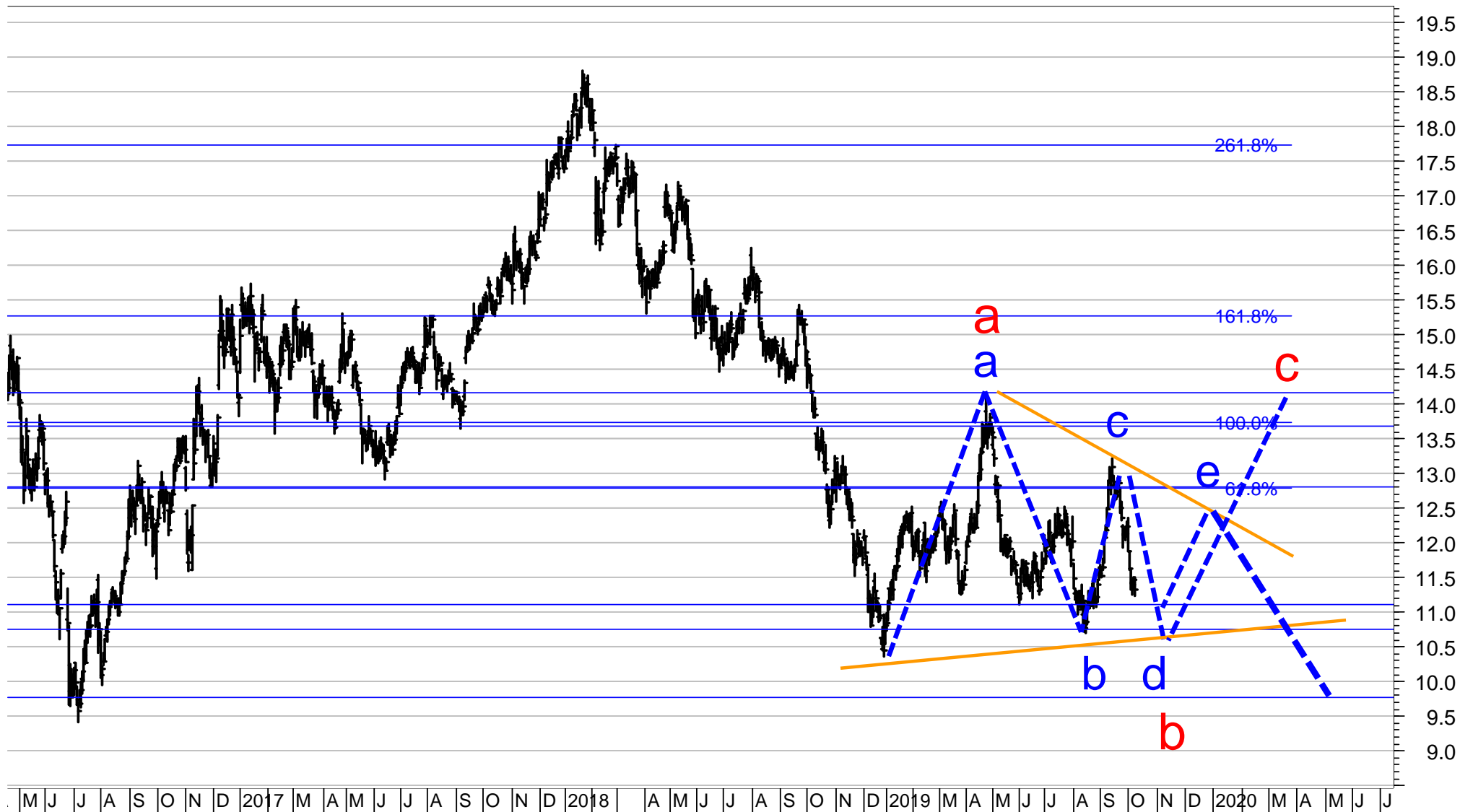


CS GROUP – daily chart

CS continues to form Wave d of the Triangle (marked blue) which originated in December 2018.

Support is at 11 and 9.75. Resistance is at 12.80 and 13.70 / 14.30.

For the wave structure it will be critical if the stock registers a low below the low of 12.8.2019. The Inverse FLAT, shown below in red –a-b-c, is also still a path, which the stock could take. Resistance is 14.30.



HELVETIA – weekly chart

The structure of the uptrend from 2009 indicates a major resistance cluster at 140. A renewed extension of the uptrend to 150 could be expected if 140 is broken.

However, unless a clear acceleration of the uptrend beyond 150 is signaled, the risk of a major top is increasing.

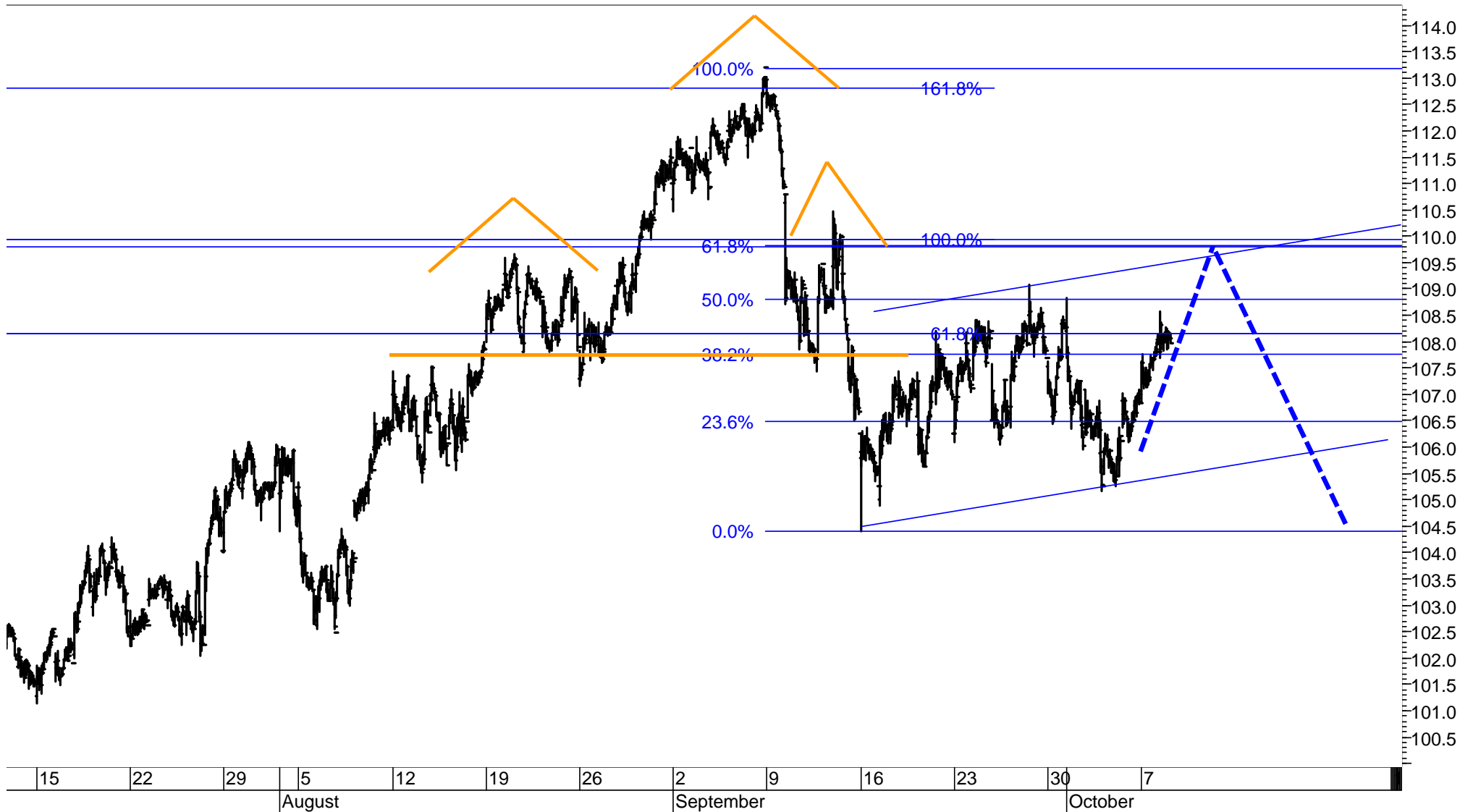


NESTLE – 30-minute chart

Nestlé managed to hold above the major support at around 104.50.

The present rally will meet major resistance at 109.50 / 110. As long as this level is not broken the medium-term correction, which began in early September, is likely to test or break 104 in October or November.

Only if 110 is cleared will the structure from the high at 113 be labeled as a consolidation, which should be followed by another new all-time high later on.



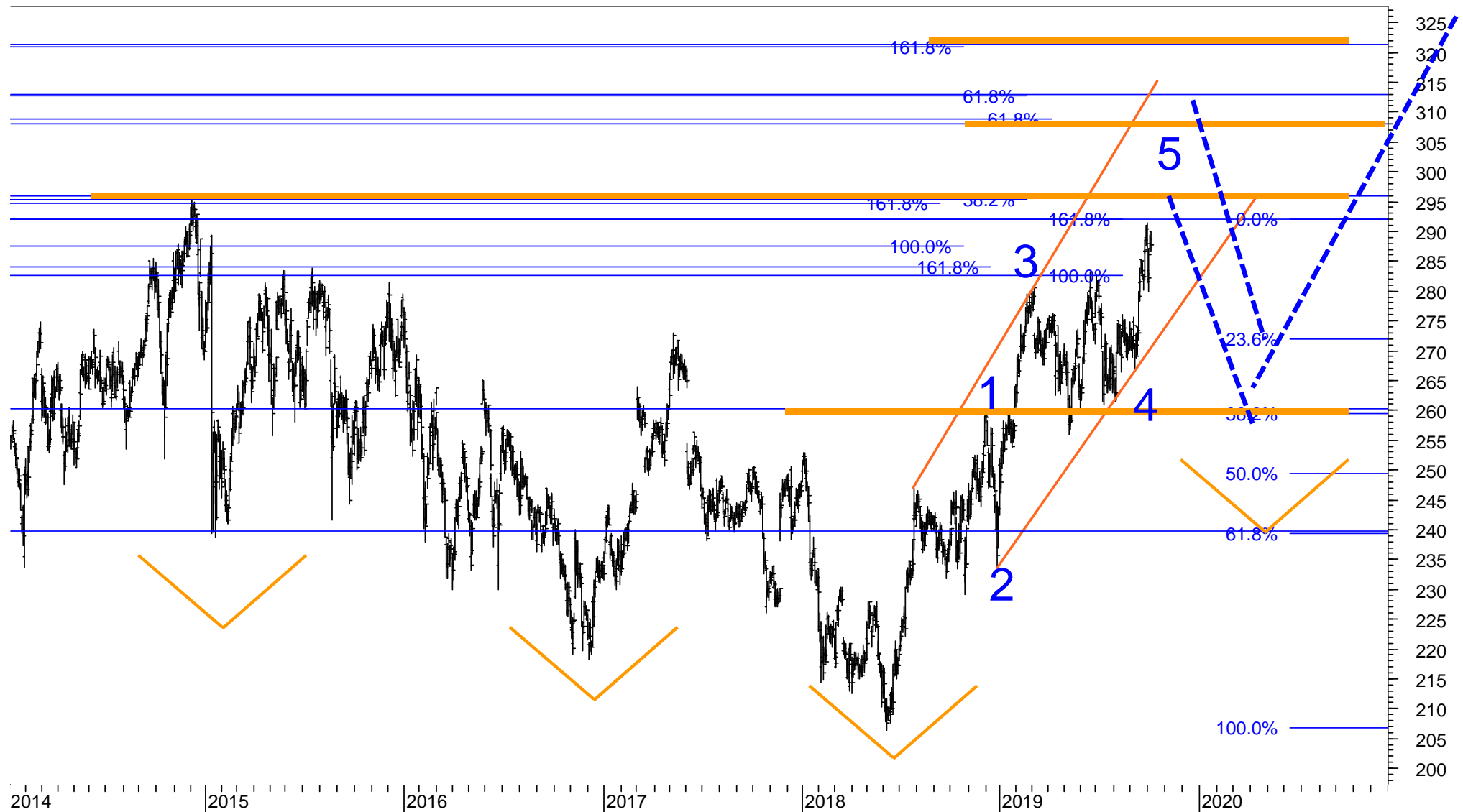
NOVARTIS – 240-minute chart

Analysing the decline from 17.7.2019 at 94.40 and from 30.8.2019 at 89.67 under the microscope reveals that there are 3 Fibonacci support levels between 84.20 and 83.30. A break of 83 would mean a deeper retracement to 81.50 / 80.50. As long as 80 is not broken the alternate count, which calls for Wave 5 of the Expanding Wedge, can still to be traced out. I would sell / reduce if 83 is broken and selling again if 80 is broken.



ROCHE GS – daily chart

Roche is trading below the mega resistance at 292 to 296. It is true that the price increase from 2018 has been much faster compared to the time it had spent in the correction from 2014 to 2018. Still, a correction around the previous high at 295.80 could be reasonably expected to start soon. A break of 297 could signal 308 to 322.



YPSOMED – weekly chart (left) and daily chart

The correction from 227.90 in 2017 to December 2018 has retraced quite exactly 61.80% of the rise from 2011 to 2017. The uptrend from December 2018 could signal a new breakout if 139 / 143 is cleared.



STOXX 200 stocks – listed according to the Score (range from 100% to 0%, 40%-60% is neutral)

Out of the 200 stocks 14 stocks have the maximum positive score of 100%. Last week, there were 22 stocks with a maximum of 100%. The number of stocks with a total score of 0% has increased from 12 to 38. This is a clear deterioration of the technical indicators. The Total Score of all 200 stocks is at 44%. This is still NEUTRAL, but moving closer to NEGATIVE.

Stocks marked blue are the Eurostoxx 50 Index constituents

100%	CARLSBERG B	CARLb.CO
100%	CASTELLUM	CAST.ST
100%	ENDESA	ELE.MC
100%	ENEL	ENEl.MI
100%	FABEGE	FABG.ST
100%	FASTIGHETS BALDER B	BALDb.ST
100%	IBERDROLA	IBE.MC
100%	LOOMIS B	LOOMb.ST
100%	ORKLA	ORK.OL
100%	PERNOD-RICARD	PERP.PA
100%	SKANSKA B	SKAb.ST
100%	SVENSKA CELLULOSA AKTIEB	SCAb.ST
100%	VODAFONE GROUP	VOD.L
100%	VONOVIA (XET)	VNAn.DE
94%	ELECTROLUX B	ELUXb.ST
94%	ENGIE	ENGIE.PA
94%	GJENSIDIGE FORSIKRING	GJFS.OL
94%	L'OREAL	OREP.PA
94%	MUENCHENER RUCK. (XET)	MUVGn.DE
94%	NATIONAL GRID	NG.L
94%	NOVO NORDISK 'B'	NOVOb.CO
94%	ORANGE	ORAN.PA
94%	TELENOR	TEL.OL
89%	ASSICURAZIONI GENERALI	GASI.MI
89%	DEUTSCHE BOERSE (XET)	DBIGn.DE
89%	RWE (XET)	RWEG.DE
89%	TGS-NOPEC GEOPHS.	TGS.OL
83%	AAK	AAK.ST
83%	AXA	AXAF.PA
83%	COMPASS GROUP	CPG.L
83%	ESSITY B	ESSITyb.ST
83%	GLAXOSMITHKLINE	GSK.L
83%	HENKEL PREF. (XET)	HNKG.DE
83%	INDITEX	ITX.MC
83%	INTESA SANPAOLO	ISP.MI
83%	PLKNC.NAFTOWY ORLEN	PKN.WA
83%	SCHIBSTED A	SBSTA.OL
83%	TESCO	TSCO.L
83%	THYSSENKRUPP (XET)	TKAG.DE
83%	UNILEVER	UNA.AS
83%	WFD UNIBAIL RODAMCO STA	URW.AS
78%	ASML HOLDING	ASML.AS
78%	ASSA ABLOY B	ASSAb.ST
78%	DEUTSCHE TELEKOM (XET)	DTEGn.DE
78%	EPIROC A	EPIRa.ST
78%	KONINKLIJKE AHOLD DELHA	AD.AS
78%	MERCK KGAA (XET)	MRCG.DE
78%	REPSOL YPF	REP.MC
78%	SANOFI	SASY.PA
78%	SIEMENS (XET) HEALTHINEER	SHLG.DE

72%	AIR LIQUIDE	AIRP.PA
72%	BASF (XET)	BASFn.DE
72%	BOLIDEN ORD SHS	BOL.ST
72%	COLOPLAST B	COLOb.CO
72%	COVESTRO (XET)	COV.DE
72%	KBC GROUP	KBC.BR
72%	NORSK HYDRO	NHY.OL
72%	SAFRAN	SAF.PA
72%	SIEMENS (XET)	SIEGn.DE
72%	TELE2 B	TEL2b.ST
72%	TELIA COMPANY	TELIA.ST
67%	ADIDAS (XET)	ADSGn.DE
67%	ALFA LAVAL	ALFA.ST
67%	DASSAULT SYSTEMES	DAST.PA
67%	DEUTSCHE LUFTHANSA (XET)	LHAG.DE
67%	HEINEKEN	HEIN.AS
67%	HEXPOL B	HPOLb.ST
67%	INVESTOR B	INVEb.ST
67%	JYSKE BANK	JYSK.CO
67%	NATURGY ENERGY	NTGY.MC
67%	SWEDISH MATCH	SWMA.ST
61%	BBV.ARGENTARIA	BBVA.MC
61%	BT GROUP	BT.L
61%	E ON N (XET)	EONGn.DE
61%	EQUINOR	EQNR.OL
61%	ING GROEP	INGA.AS
61%	KONE 'B'	KNEBV.HE
61%	NORDEA BANK (OME)	NDASE.ST
61%	SUBSEA 7	SUBC.OL
61%	SWEDBANK A	SWEDa.ST
56%	AENA SME	AENA.MC
56%	ALLIANZ (XET)	ALVG.DE
56%	BNP PARIBAS	BNPP.PA
56%	LINDE (XET)	LINI.DE
56%	SALMAR	SALM.OL
56%	TELEFONICA	TEF.MC
56%	VINCI	SGEF.PA
50%	AMBU B	AMBUb.CO
50%	ATLAS COPCO A	ATCOa.ST
50%	CHRISTIAN HANSEN HOLDING	CHRH.CO
50%	ESSILORLUXOTTICA	ESLX.PA
50%	GENMAB	GEN.CO
50%	INNOGY (XET)	IGY.DE
50%	ROYAL DUTCH SHELL A	RDSa.AS
50%	SCHNEIDER ELECTRIC	SCHN.PA
50%	SVENSKA HANDELSBANKEN A	SHB.AS
44%	AKER BP	AKERBP.OL
44%	DNB	DNB.OL
44%	ERICSSON B	ERICb.ST
44%	SKANDINAVISKA ENSKILDA BA	SEBa.ST

39%	ORSTED	ORSTED.CO
39%	PANDORA	PNDORA.CO
39%	SOCIETE GENERALE	SOGN.PA
33%	ANHEUSER-BUSCH INBEV	ABI.BR
33%	ASTRAZENECA	AZN.L
33%	BANK POLSKA KASA OPIEKI	PEO.WA
33%	BAYER (XET)	BAYGn.DE
33%	CRH (DUB)	CRH.I
33%	DANONE	DANO.PA
33%	ICA GRUPPEN	ICAA.ST
33%	KINNEVIK B	KINVb.ST
33%	PHILIPS ELTN.KONINKLIJKE	PHG.AS
33%	STOREBRAND	STB.OL
28%	BARCLAYS	BARC.L
28%	BEIERSDORF (XET)	BEIG.DE
28%	DAIMLER (XET)	DAIGn.DE
28%	DANSKE BANK	DANSKE.CO
28%	DIAGEO	DGE.L
28%	FERRARI (MIL)	RACE.MI
28%	PEUGEOT	PEUP.PA
28%	SANDVIK	SAND.ST
28%	UNILEVER (UK)	ULVR.L
22%	CD PROJECT RED	CDR.WA
22%	GETINGE B	GETIb.ST
22%	INFINEON TECHS. (XET)	IFXGn.DE
22%	NESTE	NESTE.HE
22%	YARA INTERNATIONAL	YAR.OL
17%	ANGLO AMERICAN	AAL.L
17%	BMW (XET)	BMWG.DE
17%	BP	BP.L
17%	DSV PANALPINA	DSV.CO
17%	EDF	EDF.PA
17%	HERMES INTL.	HRMS.PA
17%	KINDRED GROUP SDR	KINDSdb.ST
17%	LLOYDS BANKING GROUP	LLOY.L
17%	LVMH	LVMH.PA
17%	RELX	RELL
17%	WIRECARD (XET)	WDIG.DE
11%	ACCOR	ACCP.PA
11%	BANCO SANTANDER	SAN.MC
11%	BRITISH AMERICAN TOBACCO	BATS.L
11%	CONTINENTAL (XET)	CONG.DE
11%	DEUTSCHE BANK (XET)	DBGn.DE
11%	DEUTSCHE POST (XET)	DPWGn.DE
11%	DOMETIC GROUP	DOMETIC.ST
11%	FIAT CHRYSLER AUTOS.	FCHA.MI
11%	FRESENIUS (XET)	FREG.DE
11%	HEIDELBERGCEMENT (XET)	HEIG.DE
11%	HEINEKEN HOLDING	HEIO.AS
11%	HUSQVARNA B	HUSQb.ST

11%	INDUSTRIVARDEN A	INDUa.ST
11%	MICHELIN	MICP.PA
11%	SKF B	SKFb.ST
11%	STANDARD CHARTERED	STAN.L
11%	TRELLEBORG B	TRELb.ST
11%	VOLKSWAGEN PREF. (XET)	VOWG_p.DE
11%	VOLVO B	VOLVb.ST
6%	ADYEN	ADYEN.AS
6%	AIRBUS	AIR.PA
6%	CHRISTIAN DIOR	DIOR.PA
6%	RECKITT BENCKISER GROUP	RB.L
6%	VIVENDI	VIV.PA
0%	A P MOLLER MAERSK B	MAERSKb.CO
0%	ABN AMRO BANK	ABNd.AS
0%	AMADEUS IT GROUP	AMA.MC
0%	ARCELORMITTAL	MT.AS
0%	ASSOCIATED BRIT.FOODS	ABF.L
0%	BHP GROUP	BHPb.L
0%	ELEKTA B	EKTAb.ST
0%	ENI	ENI.MI
0%	FRESENIUS MED.CARE (XET)	FMEG.DE
0%	GLENCORE	GLEN.L
0%	GN STORE NORD	GN.CO
0%	HEXAGON B	HEXAb.ST
0%	HSBC HOLDINGS	HSBA.L
0%	IMPERIAL BRANDS	IMB.L
0%	ISS	ISS.CO
0%	KERING	PRTP.PA
0%	KGHM	KGH.WA
0%	LUNDIN PETROLEUM	LUPE.ST
0%	NIBE INDUSTRIER B	NIBEb.ST
0%	NOKIA	NOKIA.HE
0%	NOVOZYMES B	NZYMb.CO
0%	PKO BANK	PKO.WA
0%	POLISH OIL AND GAS	PGN.WA
0%	PRUDENTIAL	PRU.L
0%	PZU GROUP	PZU.WA
0%	RIO TINTO	RIO.L
0%	ROYAL BANK OF SCTL.GP.	RBS.L
0%	SAAB B	SAABb.ST
0%	SAMPO 'A'	SAMPO.HE
0%	SANTANDER BANK POLSKA	SPL1.WA
0%	SAP (XET)	SAPG.DE
0%	SECURITAS B	SECUb.ST
0%	SIMCORP	SIM.CO
0%	SWEDISH ORPHAN BIOVITRU	SOBIV.ST
0%	THALES	TCFP.PA
0%	TOTAL	TOTF.PA
0%	TRYG	TRYG.CO
0%	VESTAS WINDSYSTEMS	VVWS.CO

STOXX 200 stocks – listed alphabetically (A-Infineon)

SCORE	COMPANY	RIC	PRICE	LT	MT	ST
0%	A P MOLLER MAERSK B	MAERSKb.CO	7'442.00	d-	dd-	d-
83%	AAK	AAK.ST	197.30	+	u+	+
0%	ABN AMRO BANK	ABNd.AS	15.93	-	-	-
11%	ACCOR	ACCP.PA	37.25	do	-	-
67%	ADIDAS (XET)	ADSGn.DE	272.35	+	+	dd-
6%	ADYEN	ADYEN.AS	601.80	-	-	o
56%	AENA SME	AENA.MC	165.55	do	u+	+
72%	AIR LIQUIDE	AIRP.PA	117.00	+	+	do
6%	AIRBUS	AIR.PA	117.22	d-	-	uo
44%	AKER BP	AKERBP.OL	245.80	uo	uu+	-
67%	ALFA LAVAL	ALFA.ST	190.05	o	+	do
56%	ALLIANZ (XET)	ALVG.DE	207.70	+	+	dd-
0%	AMADEUS IT GROUP	AMA.MC	64.30	-	-	-
50%	AMBU B	AMBUb.CO	111.10	o	+	uo
17%	ANGLO AMERICAN	AAL.L	1'833.00	d-	o	d-
33%	ANHEUSER-BUSCH INBEV	ABI.BR	85.39	+	d-	dd-
0%	ARCELORMITTAL	MT.AS	12.18	-	-	-
78%	ASML HOLDING	ASML.AS	226.05	+	+	+
78%	ASSA ABLOY B	ASSAb.ST	219.80	+	+	+
89%	ASSICURAZIONI GENERALI	GASI.MI	17.77	+	+	do
0%	ASSOCIATED BRIT.FOODS	ABF.L	2'165.00	d-	dd-	d-
33%	ASTRAZENECA	AZN.L	7'043.00	+	d-	dd-
50%	ATLAS COPCO A	ATCOa.ST	294.70	+	do	-
83%	AXA	AXAF.PA	22.74	+	+	dd-
11%	BANCO SANTANDER	SAN.MC	3.56	o	dd-	dd-
33%	BANK POLSKA KASA OPIEKI	PEO.WA	101.55	-	+	-
28%	BARCLAYS	BARC.L	144.34	do	do	dd-
72%	BASF (XET)	BASFn.DE	62.40	+	+	dd-
33%	BAYER (XET)	BAYGn.DE	63.13	+	d-	-
61%	BBV.ARGENTARIA	BBVA.MC	4.59	do	+	dd-
28%	BEIERSDORF (XET)	BEIG.DE	105.90	+	-	o
0%	BHP GROUP	BHPB.L	1'686.20	-	-	-
17%	BMW (XET)	BMWG.DE	62.68	d-	do	d-
56%	BNP PARIBAS	BNPP.PA	42.62	+	+	dd-
72%	BOLIDEN ORD SHS	BOL.ST	226.50	+	+	-
17%	BP	BP.L	502.30	-	do	d-
11%	BRITISH AMERICAN TOBACCO	BATS.L	2'824.00	do	dd-	dd-
61%	BT GROUP	BT.L	178.64	-	+	+
100%	CARLSBERG B	CARLb.CO	1'013.00	+	+	+
100%	CASTELLUM	CAST.ST	210.60	+	+	+
22%	CD PROJECT RED	CDR.WA	236.00	+	dd-	-
6%	CHRISTIAN DIOR	DIOR.PA	426.20	d-	-	uo
50%	CHRISTIAN HANSEN HOLDING	CHRH.CO	574.20	-	+	dd-
72%	COLOPLAST B	COLOb.CO	810.80	+	u+	do
83%	COMPASS GROUP	CPG.L	2'054.00	+	u+	+
11%	CONTINENTAL (XET)	CONG.DE	112.76	o	dd-	-
72%	COVESTRO (XET)	1COV.DE	43.26	+	+	dd-
33%	CRH (DUB)	CRH.I	29.73	+	dd-	dd-
28%	DAIMLER (XET)	DAIGn.DE	43.81	o	do	-
33%	DANONE	DANO.PA	78.82	+	d-	dd-

SCORE	COMPANY	RIC	PRICE	LT	MT	ST
28%	DANSKE BANK	DANSKE.CO	93.50	o	do	-
67%	DASSAULT SYSTEMES	DAST.PA	133.00	-	u+	+
11%	DEUTSCHE BANK (XET)	DBKgn.DE	6.48	do	dd-	-
89%	DEUTSCHE BOERSE (XET)	DB1Gn.DE	139.75	+	+	do
11%	DEUTSCHE POST (XET)	DPWGn.DE	28.75	do	dd-	dd-
78%	DEUTSCHE TELEKOM (XET)	DTEGn.DE	15.25	u+	+	do
28%	DIAGEO	DGE.L	3'328.00	o	-	+
44%	DNB	DNB.OL	155.15	do	+	dd-
11%	DOMETIC GROUP	DOMETIC.ST	74.04	o	-	-
17%	DSV PANALPINA	DSV.CO	630.40	do	d-	o
61%	E ON N (XET)	EONGn.DE	8.96	-	+	u+
17%	EDF	EDF.PA	9.81	-	o	d-
94%	ELECTROLUX B	ELUXb.ST	239.80	+	+	u+
0%	ELEKTA B	EKTab.ST	122.60	d-	d-	dd-
100%	ENDESA	ELE.MC	23.88	+	+	+
100%	ENEL	ENEL.MI	6.85	+	+	+
94%	ENGIE	ENGIE.PA	14.84	+	+	+
0%	ENI	ENI.MI	13.65	d-	dd-	d-
78%	EPIROC A	EPIRa.ST	107.00	+	+	u+
61%	EQUINOR	EQNR.OL	168.65	o	+	d-
44%	ERICSSON B	ERICb.ST	79.52	-	u+	u+
50%	ESSILORLUXOTTICA	ESLX.PA	129.65	+	do	dd-
83%	ESSITY B	ESSITYb.ST	289.50	u+	uu+	+
100%	FABEGE	FABG.ST	159.05	+	+	+
100%	FASTIGHETS BALDER B	BALDb.ST	373.00	+	+	+
28%	FERRARI (MIL)	RACE.MI	136.55	+	d-	do
11%	FIAT CHRYSLER AUTOS.	FCHA.MI	11.34	o	-	-
11%	FRESENIUS (XET)	FREG.DE	41.33	o	-	-
0%	FRESENIUS MED.CARE (XET)	FMEG.DE	58.80	d-	d-	-
50%	GENMAB	GEN.CO	1'343.00	+	do	d-
22%	GETINGE B	GETIb.ST	136.90	+	d-	d-
94%	GJENSIDIGE FORSIKRING	GJFS.OL	183.25	+	+	u+
83%	GLAXOSMITHKLINE	GSK.L	1'715.40	+	+	+
0%	GLENORE	GLEN.L	225.00	d-	d-	-
0%	GN STORE NORD	GN.CO	275.00	-	-	-
11%	HEIDELBERGCEMENT (XET)	HEIG.DE	62.20	do	dd-	d-
67%	HEINEKEN	HEIN.AS	97.42	+	u+	+
11%	HEINEKEN HOLDING	HEIO.AS	89.50	do	d-	dd-
83%	HENKEL PREF. (XET)	HNKG.DE	92.96	+	+	uu+
17%	HERMES INTL.	HRMS.PA	616.60	do	d-	do
0%	HEXAGON B	HEXAb.ST	443.90	d-	dd-	d-
67%	HEXPOL B	HPOLb.ST	75.10	o	+	uo
0%	HSBC HOLDINGS	HSBA.L	604.30	d-	dd-	dd-
11%	HUSQVARNA B	HUSQb.ST	75.24	o	-	-
100%	IBERDROLA	IBE.MC	9.42	+	+	+
33%	ICA GRUPPEN	ICAA.ST	445.80	+	d-	d-
0%	IMPERIAL BRANDS	IMB.L	1'830.40	-	-	-
83%	INDITEX	ITX.MC	28.13	+	+	+
11%	INDUSTRIVARDEN A	INDUa.ST	205.40	do	dd-	d-
22%	INFINEON TECHS. (XET)	IFXGn.DE	16.19	u+	d-	-

STOXX 200 stocks – listed alphabetically (ING-Z)

SCORE	COMPANY	RIC	PRICE	LT	MT	ST
61%	ING GROEP	INGA.AS	9.20	do	+	dd-
50%	INNOGY (XET)	IGY.DE	44.70	+	o	u+
83%	INTESA SANPAOLO	ISP.MI	2.11	+	+	dd-
67%	INVESTOR B	INVEb.ST	467.70	+	+	dd-
0%	ISS	ISS.CO	160.60	-	d-	-
67%	JYSKE BANK	JYSK.CO	214.50	do	+	do
72%	KBC GROUP	KBC.BR	57.72	+	+	dd-
0%	KERING	PRTP.PA	445.30	-	dd-	dd-
0%	KGHM	KGH.WA	77.00	-	d-	d-
17%	KINDRED GROUP SDR	KINDsdb.ST	55.74	-	do	d-
33%	KINNEVIK B	KINVB.ST	250.70	do	do	uo
61%	KONE 'B'	KNEBV.HE	52.10	+	o	+
78%	KONINKLIJKE AHOLD DELHA	AD.AS	22.70	+	+	do
56%	LINDE (XET)	LINI.DE	172.30	+	+	dd-
17%	LLOYDS BANKING GROUP	LLOY.L	51.70	d-	do	dd-
100%	LOOMIS B	LOOMB.ST	359.40	+	+	+
94%	L'OREAL	OREP.PA	248.00	+	+	+
67%	DEUTSCHE LUFTHANSA (XET)	LHAG.DE	14.52	-	+	+
0%	LUNDIN PETROLEUM	LUPE.ST	291.80	d-	-	-
17%	LVMH	LVMH.PA	353.80	do	d-	uo
11%	MICHELIN	MICP.PA	97.88	o	dd-	dd-
78%	MERCK KGAA (XET)	MRCG.DE	102.20	+	+	do
94%	MUENCHENER RUCK. (XET)	MUVGn.DE	237.20	+	+	+
94%	NATIONAL GRID	NG.L	879.60	+	+	+
67%	NATURGY ENERGY	NTGY.MC	23.92	o	+	do
22%	NESTE	NESTE.HE	29.38	d-	do	do
0%	NIBE INDUSTRIER B	NIBEb.ST	118.60	-	d-	d-
0%	NOKIA	NOKIA.HE	4.48	d-	d-	d-
61%	NORDEA BANK (OME)	NDASE.ST	67.37	o	+	dd-
72%	NORSK HYDRO	NHY.OL	31.18	+	+	-
94%	NOVO NORDISK 'B'	NOVOb.CO	352.85	+	+	+
0%	NOVOZYMES B	NZYMb.CO	286.00	-	d-	-
94%	ORANGE	ORAN.PA	14.45	+	+	+
100%	ORKLA	ORK.OL	86.78	+	+	+
39%	ORSTED	ORSTED.CO	626.40	+	-	o
39%	PANDORA	PNDORA.CO	273.00	+	d-	uo
100%	PERNOD-RICARD	PERP.PA	174.00	+	u+	u+
28%	PEUGEOT	PEUP.PA	21.69	do	do	d-
33%	PHILIPS ELTN.KONINKLIJKE	PHG.AS	41.67	+	d-	-
0%	PKO BANK	PKO.WA	37.61	-	-	-
83%	PLKNC.NAFTOWY ORLEN	PKN.WA	100.80	+	+	+
0%	POLISH OIL AND GAS	PGN.WA	4.56	-	-	-
0%	PRUDENTIAL	PRU.L	1'400.00	d-	d-	dd-
0%	PZU GROUP	PZU.WA	36.45	-	-	-
6%	RECKITT BENCKISER GROUP	RB.L	6'258.00	d-	d-	o
17%	RELX	REL.L	1'864.50	do	d-	do
78%	REPSOL YPF	REP.MC	14.10	+	+	do
0%	RIO TINTO	RIO.L	4'054.50	d-	d-	-
0%	ROYAL BANK OF SCTL.GP.	RBS.L	195.05	d-	dd-	dd-
50%	ROYAL DUTCH SHELL A	RDSa.AS	26.22	d-	+	dd-

SCORE	COMPANY	RIC	PRICE	LT	MT	ST
89%	RWE (XET)	RWEG.DE	28.02	+	+	do
0%	SAAB B	SAABb.ST	265.70	-	d-	-
72%	SAFRAN	SAF.PA	141.40	+	+	dd-
56%	SALMAR	SALM.OL	415.00	uu+	uo	u+
0%	SAMPO 'A'	SAMPO.HE	35.00	-	-	-
28%	SANDVIK	SAND.ST	146.10	o	do	d-
78%	SANOFI	SASY.PA	82.30	+	+	do
0%	SANTANDER BANK POLSKA	SPL1.WA	287.00	-	dd-	dd-
0%	SAP (XET)	SAPG.DE	104.28	d-	-	d-
83%	SCHIBSTED A	SBSTA.OL	270.20	+	+	+
50%	SCHNEIDER ELECTRIC	SCHN.PA	77.34	+	do	dd-
0%	SECURITAS B	SECUB.ST	147.15	-	d-	dd-
72%	SIEMENS (XET)	SIEGn.DE	96.42	o	+	+
78%	SIEMENS (XET) HEALTHINEER	SHLG.DE	36.40	uo	u+	+
0%	SIMCORP	SIM.CO	589.00	-	d-	d-
44%	SKANDINAVISKA ENSKILDA B	SEBa.ST	88.20	o	+	dd-
100%	SKANSKA B	SKAb.ST	197.35	+	+	+
11%	SKF B	SKFb.ST	156.75	do	dd-	-
39%	SOCIETE GENERALE	SOGN.PA	23.52	+	do	d-
11%	STANDARD CHARTERED	STAN.L	637.40	do	dd-	d-
33%	STOREBRAND	STB.OL	55.14	-	+	dd-
61%	SUBSEA 7	SUBC.OL	93.14	o	+	-
100%	SVENSKA CELLULOZA AKTIEB	SCAb.ST	88.74	+	+	u+
50%	SVENSKA HANDELSBANKEN A	SHBa.ST	89.92	d-	+	d-
61%	SWEDBANK A	SWEDa.ST	135.85	o	+	dd-
67%	SWEDISH MATCH	SWMA.ST	403.70	o	+	o
0%	SWEDISH ORPHAN BIOVITRU	SOBIV.ST	154.55	-	-	-
72%	TELE2 B	TEL2b.ST	142.15	+	+	do
56%	TELEFONICA	TEF.MC	6.87	d-	+	do
94%	TELENOR	TEL.OL	183.95	+	u+	u+
72%	TELIA COMPANY	TELIA.ST	43.70	+	+	do
83%	TESCO	TSCO.L	237.00	+	+	dd-
89%	TGS-NOPEC GEOPHS.	TGS.OL	239.30	u+	+	uu+
0%	THALES	TCFP.PA	98.54	d-	d-	-
83%	THYSSENKRUPP (XET)	TKAG.DE	12.44	+	+	d-
0%	TOTAL	TOTF.PA	45.22	d-	dd-	dd-
11%	TRELLEBORG B	TRELB.ST	132.35	do	dd-	-
0%	TRYG	TRYG.CO	193.80	-	-	d-
83%	WFD UNIBAIL RODAMCO STA	URW.AS	127.00	+	+	+
28%	UNILEVER (UK)	ULVR.L	4'843.00	u+	-	o
83%	UNILEVER	UNA.AS	54.75	+	+	+
0%	VESTAS WINDSYSTEMS	VWS.CO	526.60	-	d-	-
56%	VINCI	SGEF.PA	97.32	+	do	do
6%	VIVENDI	VIV.PA	24.94	dd-	d-	do
100%	VODAFONE GROUP	VOD.L	160.74	+	+	+
11%	VOLKSWAGEN PREF. (XET)	VOWG_p.DE	148.54	do	dd-	d-
11%	VOLVO B	VOLVb.ST	131.00	o	d-	-
100%	VONOVIA (XET)	VNAAn.DE	47.34	+	+	+
17%	WIRECARD (XET)	WDIG.DE	144.50	o	-	uo
22%	YARA INTERNATIONAL	YAR.OL	388.10	o	d-	u+

Eurostoxx 50 constituent stocks - listed to Score (left) and alphabetically (right)

100%	ENEL
100%	IBERDROLA
94%	ENGIE
94%	L'OREAL
94%	MUENCHENER RUCK. (XET)
94%	ORANGE
89%	DEUTSCHE BOERSE (XET)
83%	AXA
83%	INDITEX
83%	INTESA SANPAOLO
83%	UNILEVER
78%	ASML HOLDING
78%	DEUTSCHE TELEKOM (XET)
78%	KONINKLIJKE AHOLD DELHA
78%	SANOFI
72%	AIR LIQUIDE
72%	BASF (XET)
72%	SAFRAN
72%	SIEMENS (XET)
67%	ADIDAS (XET)
61%	BBV.ARGENTARIA
61%	ING GROEP
56%	ALLIANZ (XET)
56%	BNP PARIBAS
56%	LINDE (XET)
56%	TELEFONICA
56%	VINCI
50%	ESSILORLUXOTTICA
50%	SCHNEIDER ELECTRIC
39%	SOCIETE GENERALE
33%	ANHEUSER-BUSCH INBEV
33%	BAYER (XET)
33%	CRH (DUB)
33%	DANONE
33%	PHILIPS ELTN.KONINKLIJKE
28%	DAIMLER (XET)
17%	BMW (XET)
17%	LVMH
11%	BANCO SANTANDER
11%	DEUTSCHE POST (XET)
11%	FRESENIUS (XET)
11%	VOLKSWAGEN PREF. (XET)
6%	AIRBUS
6%	VIVENDI
0%	AMADEUS IT GROUP
0%	ENI
0%	KERING
0%	NOKIA
0%	SAP (XET)
0%	TOTAL

SCORE	COMPANY	RIC	PRICE	LT	MT	ST	COMMENT	DATE BOUGHT	PRICE BOUGHT	PROFIT or LOSS
67%	ADIDAS (XET)	ADSGn.DE	272.35	+	+	dd-	Sell signals to be triggered if 261 and 245 are broken.			
6%	AIRBUS	AIR.PA	117.22	d-	-	uo	Sell signals if the supports at 114 and 112 are broken.			
72%	AIR LIQUIDE	AIRP.PA	117.00	+	+	do	Sell if 112 is broken. Support is 108.50.			
56%	ALLIANZ (XET)	ALVG.DE	207.70	+	+	dd-	Next sell signal will be triggered if 204.50 and 199 are broken.			
0%	AMADEUS IT GROUP	AMA.MC	64.30	-	-	-				
33%	ANHEUSER-BUSCH INBEV	ABI.BR	85.39	+	d-	dd-	Sell signal will be triggered if 79 is broken.			
78%	ASML HOLDING	ASML.AS	226.05	+	+	+				
83%	AXA	AXAF.PA	22.74	+	+	dd-				
11%	BANCO SANTANDER	SAN.MC	3.56	o	dd-	dd-				
72%	BASF (XET)	BASFn.DE	62.40	+	+	dd-				
33%	BAYER (XET)	BAYGn.DE	63.13	+	d-	-				
61%	BBV.ARGENTARIA	BBVA.MC	4.59	do	+	dd-				
17%	BMW (XET)	BMWG.DE	62.68	d-	do	d-				
56%	BNP PARIBAS	BNPP.PA	42.62	+	+	dd-				
33%	CRH (DUB)	CRH.I	29.73	+	dd-	dd-				
28%	DAIMLER (XET)	DAIGn.DE	43.81	o	do	-				
33%	DANONE	DANO.PA	78.82	+	d-	dd-	Sell signals if the supports at 77, 76.20, 74.80 are broken.			
89%	DEUTSCHE BOERSE (XET)	DB1Gn.DE	139.75	+	+	do				
11%	DEUTSCHE POST (XET)	DPWGn.DE	28.75	do	dd-	dd-				
78%	DEUTSCHE TELEKOM (XET)	DTEGn.DE	15.25	u+	+	do				
100%	ENEL	ENEI.MI	6.85	+	+	+	Stopped out at 6.59 at breakeven.			
94%	ENGIE	ENGIE.PA	14.84	+	+	+				
0%	ENI	ENI.MI	13.65	d-	dd-	d-				
50%	ESSILORLUXOTTICA	ESLX.PA	129.65	+	do	dd-				
11%	FRESENIUS (XET)	FREG.DE	41.33	o	-	-				
100%	IBERDROLA	IBE.MC	9.42	+	+	+	Sell signals to be triggered if 9.25 and 9.05 is broken.			
83%	INDITEX	ITX.MC	28.13	+	+	+				
61%	ING GROEP	INGA.AS	9.20	do	+	dd-				
83%	INTESA SANPAOLO	ISP.MI	2.11	+	+	dd-	Sell signals were triggered at 2.1150, 2.1070 and 2.0950.			
0%	KERING	P RTP.PA	445.30	-	dd-	dd-				
78%	KONINKLIJKE AHOLD DELHA	AD.AS	22.70	+	+	do				
56%	LINDE (XET)	LINI.DE	172.30	+	+	dd-	Sell signals will be triggered if 165 and 157 is broken.			
94%	L'OREAL	OREP.PA	248.00	+	+	+				
17%	LVMH	LVMH.PA	353.80	do	d-	uo				
94%	MUENCHENER RUCK. (XET)	MUVGn.DE	237.20	+	+	+	Next resistance is 245 / 248.			
0%	NOKIA	NOKIA.HE	4.48	d-	d-	d-				
94%	ORANGE	ORAN.PA	14.45	+	+	+				
33%	PHILIPS ELTN.KONINKLIJKE	PHG.AS	41.67	+	d-	-				
72%	SAFRAN	SAF.PA	141.40	+	+	dd-	Correcting below medium-term resistance at 145.			
78%	SANOFI	SASY.PA	82.30	+	+	do				
0%	SAP (XET)	SAPG.DE	104.28	d-	-	d-	Support is 99.50.			
50%	SCHNEIDER ELECTRIC	SCHN.PA	77.34	+	do	dd-				
72%	SIEMENS (XET)	SIEGn.DE	96.42	o	+	+	Sell the position if 93.10 is broken. Support is 91.50.	29.08.2019	90.00	7.13%
39%	SOCIETE GENERALE	SOGN.PA	23.52	+	do	d-	Sell signal was triggered with the break of 25.			
56%	TELEFONICA	TEF.MC	6.87	d-	+	do	TOOK PROFIT of 11.5%.			
0%	TOTAL	TOTF.PA	45.22	d-	dd-	dd-				
83%	UNILEVER	UNA.AS	54.75	+	+	+	Forming a Head and Shouler Top with sell signal if 53 is broken.			
56%	VINCI	SGEF.PA	97.32	+	do	do	Sell signals if 95 and 93 is broken.			
6%	VIVENDI	VIV.PA	24.94	dd-	d-	do				
11%	VOLKSWAGEN PREF. (XET)	VOVG_p.DE	148.54	do	dd-	d-				

S&P 200 stocks – listed according to the Score (range from 100% to 0%, 40%-60% is neutral)

Out of the 200 stocks 10 stocks have the maximum positive score of 100%. Last week, there were 12 stocks with a maximum of 100%. The number of stocks with a total score of 0% has increased from last week's 23 stocks to this week's 43 stocks. The Total Score of all 200 stocks is at 40%, which is NEUTRAL and likely to move to NEGATIVE.

100%	ACTIVISION BLIZZARD	ATVI.O
100%	APPLE	AAPL.O
100%	CHARTER COMMS.CL.A	CHTR.O
100%	CHUBB	CB
100%	DOLLAR GENERAL	DG
100%	DUKE ENERGY	DUK
100%	NVIDIA	NVDA.O
100%	PEPSICO	PEP.O
100%	SEMPRA EN.	SRE
100%	TARGET	TGT
94%	ABBVIE	ABBV.K
94%	AMER.ELEC.PWR.	AEP
94%	AT&T	T
94%	BRISTOL MYERS SQUIB	BMY
94%	CELGENE	CELG.O
94%	DOMINION ENERGY	D
94%	EQUINIX REIT	EQIX.O
94%	MARATHON PETROLEU	MPC
94%	NEXTERA ENERGY	NEE
94%	PNC FINL.SVS.GP.	PNC
94%	PUB.SER.ENTER.GP.	PEG
94%	SHERWIN-WILLIAMS	SHW
94%	SOUTHERN	SO
94%	V F	VFC
89%	EXELON	EXC
89%	NIKE 'B'	NKE
89%	REGENCY CENTERS	REG.O
89%	TJX	TJX
89%	WELLTOWER	WELL.K
83%	ALPHABET 'C'	GOOG.O
83%	AMERICAN TOWER	AMT
83%	AMPHENOL 'A'	APH
83%	BB&T	BBT
83%	COSTCO WHOLESALE	COST.O
83%	EDWARDS LIFESCIENCE	EW
83%	GENERAL MILLS	GIS
83%	INTERCONTINENTAL E	ICE
83%	KIMBERLY-CLARK	KMB
83%	LAM RESEARCH	LRCX.O
83%	LYONDELLBASELL IND	LYB
83%	MONDELEZ INTERNATI	MDLZ.O
83%	RAYTHEON 'B'	RTN
83%	SYSCO	SY
83%	TEXAS INSTRUMENTS	TXN.O
83%	VERIZON COMMUNICA	VZ
83%	WELLS FARGO & CO	WFC
83%	ZOETIS	ZTS
78%	ALLERGAN	AGN
78%	BERKSHIRE HATHAWAY	BRKb
78%	CME GROUP	CME.O

78%	DEERE	DE
78%	PROLOGIS	PLD
78%	ROSS STORES	ROST.O
72%	ALLSTATE ORD SHS	ALL
72%	BOEING	BA
72%	INTEL	INTC.O
72%	PROCTER & GAMBLE	PG
72%	WALMART	WMT
67%	APPLIED MATS.	AMAT.O
67%	CITIGROUP	C
67%	FISERV	FISV.O
67%	INTERNATIONAL BUS.M	IBM
67%	JOHNSON & JOHNSON	JNJ
67%	JP MORGAN CHASE & C	JPM
67%	PHILLIPS 66	PSX
67%	UNITED TECHNOLOGIE	UTX
67%	VALERO ENERGY	VLO
61%	EMERSON ELECTRIC	EMR
61%	ESTEE LAUDER COS.'A'	EL
61%	ILLUMINA	ILMN.O
61%	LOWE'S COMPANIES	LOW
61%	ORACLE	ORCL.K
61%	PAYCHEX	PAYX.O
56%	AMGEN	AMGN.O
56%	CVS HEALTH	CVS
56%	HOME DEPOT	HD
56%	INTUITIVE SURGICAL	ISRG.O
56%	MERCK & COMPANY	MRK
56%	QUALCOMM	QCOM.O
56%	SOUTHWEST AIRLINES	LUV
50%	CAMECO (NYS)	CCJ
50%	COMCAST A	CMCSA.O
50%	LOCKHEED MARTIN	LMT
50%	NORTHROP GRUMMAN	NOC
50%	YUM! BRANDS	YUM
44%	AFLAC	AFL
44%	MOODY'S	MCO
44%	PHILIP MORRIS INTL.	PM
39%	COCA COLA	KO
39%	MCDONALDS	MCD
39%	MEDTRONIC	MDT
39%	O REILLY AUTOMOTIVE	ORLY.O
39%	S&P GLOBAL	SPGI.K
33%	BAXTER INTL.	BAX
33%	BOOKING HOLDINGS	BKNG.O
33%	DOW CHEMICAL	DOW
33%	FIDELITY NAT.INFO.SV	FIS
33%	JOHNSON CONTROLS I	JCI
33%	MICRON TECHNOLOGY	MU.O
33%	ONEOK	OKE

33%	PUBLIC STORAGE	PSA
33%	STRYKER	SYK
33%	UNITED PARCEL SER.'B'	UPS
33%	US BANCORP	USB
28%	COLGATE-PALM.	CL
28%	WASTE MANAGEMENT	WM
22%	ACCENTURE CLASS A	ACN
22%	AMERICAN INTL.GP.	AIG
22%	ANALOG DEVICES	ADI.O
22%	CROWN CASTLE INTL.	CCI
22%	DANAHER	DHR
22%	INTUIT	INTU.O
22%	MASTERCARD	MA
22%	MICROSOFT	MSFT.O
22%	VISA 'A'	V
17%	ALTRIA GROUP	MO
17%	BECTON DICKINSON	BDX
17%	CSX	CSX.O
17%	ELI LILLY	LLY
17%	PRUDENTIAL FINL.	PRU
17%	SIMON PROPERTY GRO	SPG
11%	ADOBE (NAS)	ADBE.O
11%	AIR PRDS.& CHEMS.	APD
11%	AON CLASS A	AON
11%	BANK OF AMERICA	BAC
11%	BLACKROCK	BLK
11%	BOSTON SCIENTIFIC	BSX
11%	CONSTELLATION BRAN	STZ
11%	EBAY	EBAY.O
11%	ELECTRONIC ARTS	EA.O
11%	FACEBOOK CLASS A	FB.O
11%	FORD MOTOR	F
11%	GENERAL DYNAMICS	GD
11%	GENERAL ELECTRIC	GE
11%	GOLDMAN SACHS GP.	GS
11%	ILLINOIS TOOL WORKS	ITW
11%	IQVIA HOLDINGS	IQV
11%	KINDER MORGAN	KMI
11%	LINDE	LIN
11%	MARSH & MCLENNAN	MMC
11%	MORGAN STANLEY	MS
11%	NETFLIX	NFLX.O
11%	REGENERON PHARMS.	REGN.O
11%	STARBUCKS	SBUX.O
11%	TE CONNECTIVITY	TEL
11%	TRAVELERS COS.	TRV
11%	VERTEX PHARMS.	VRTX.O
6%	AMAZON.COM	AMZN.O
6%	AUTOMATIC DATA PRO	ADP.O
6%	BROADCOM	AVGO.O

6%	COGNIZANT TECH.SLT	CTSH.O
6%	FEDEX	FDX
6%	HCA HEALTHCARE	HCA
6%	PFIZER	PFE
6%	UNITEDHEALTH GROU	UNH
6%	WALT DISNEY	DIS
6%	XILINX	XLNX.O
0%	3M	MMM
0%	ABBOTT LABORATORIE	ABT
0%	ADVANCED MICRO DEV	AMD.O
0%	ALEXION PHARMS.	ALXN.O
0%	ALLIANCE DATA SYSTE	ADS
0%	AMERICAN EXPRESS	AXP
0%	ANTHEM	ANTM.K
0%	AUTODESK	ADSK.O
0%	BANK OF NEW YORK M	BK
0%	BIOGEN	BIIB.O
0%	CATERPILLAR	CAT
0%	CHARLES SCHWAB	SCHW.K
0%	CHEVRON	CVX
0%	CIGNA	CI
0%	CISCO SYSTEMS	CSCO.O
0%	CONOCOPHILLIPS	COP
0%	DELTA AIR LINES	DAL
0%	DOVER	DOV
0%	EATON	ETN
0%	ECOLAB	ECL
0%	EOG RES.	EOG
0%	EXXON MOBIL	XOM
0%	FORTIVE	FTV
0%	GENERAL MOTORS	GM
0%	GILEAD SCIENCES	GILD.O
0%	HONEYWELL INTL.	HON
0%	HP	HPQ
0%	HUMANA	HUM
0%	KRAFT HEINZ	KHC.O
0%	MARRIOTT INTL.'A'	MAR.O
0%	METLIFE	MET
0%	MONSTER BEVERAGE	MNST.O
0%	NORFOLK SOUTHERN	NSC
0%	OCCIDENTAL PTL.	OXY
0%	PAYPAL HOLDINGS	PYPL.O
0%	PROGRESSIVE OHIO	PGR
0%	ROPER TECHNOLOGIES	ROP
0%	SALESFORCE.COM	CRM
0%	SCHLUMBERGER	SLB
0%	TRANSOCEAN	RIG
0%	UNION PACIFIC	UNP
0%	WALGREENS BOOTS AL	WBA.O
0%	WILLIAMS	WMB

S&P 200 stocks – listed alphabetically (A-HP)

SCORE	COMPANY	RIC	PRICE	LT	MT	ST
0%	3M	MMM	153.52	-	d-	-
0%	ABBOTT LABORATORIE	ABT	81.04	d-	-	dd-
94%	ABBVIE	ABBV.K	74.33	+	+	+
22%	ACCENTURE CLASS A	ACN	186.81	+	-	d-
100%	ACTIVISION BLIZZARD	ATVI.O	55.41	+	+	uu+
11%	ADOBE (NAS)	ADBE.O	276.90	-	-	u+
0%	ADVANCED MICRO DEV	AMD.O	28.93	-	-	-
44%	AFLAC	AFL	51.95	d-	+	+
11%	AIR PRDS.& CHEMS.	APD	213.96	do	-	dd-
0%	ALEXION PHARMS.	ALXN.O	97.35	-	-	-
78%	ALLERGAN	AGN	167.98	+	+	+
0%	ALLIANCE DATA SYSTE	ADS	122.88	-	-	-
72%	ALLSTATE ORD SHS	ALL	107.46	+	+	do
83%	ALPHABET 'C'	GOOG.O	1'207.68	+	+	-
17%	ALTRIA GROUP	MO	42.17	-	-	u+
6%	AMAZON.COM	AMZN.O	1'732.66	-	-	uo
94%	AMER.ELEC.PWR.	AEP	93.71	+	+	+
0%	AMERICAN EXPRESS	AXP	113.65	-	-	d-
22%	AMERICAN INTL.GP.	AIG	53.63	+	dd-	-
83%	AMERICAN TOWER	AMT	225.28	+	u+	u+
56%	AMGEN	AMGN.O	197.17	+	uo	u+
83%	AMPHENOL 'A'	APH	95.37	+	+	+
22%	ANALOG DEVICES	ADI.O	110.84	+	d-	-
0%	ANTHEM	ANTM.K	241.03	-	-	-
11%	AON CLASS A	AON	190.43	do	d-	dd-
100%	APPLE	AAPL.O	227.06	+	+	+
67%	APPLIED MATS.	AMAT.O	50.65	+	+	-
94%	AT&T	T	37.66	+	+	+
0%	AUTODESK	ADSK.O	147.56	-	-	-
6%	AUTOMATIC DATA PRO	ADP.O	158.89	-	-	do
11%	BANK OF AMERICA	BAC	28.31	do	dd-	d-
0%	BANK OF NEW YORK M	BK	42.24	d-	dd-	-
33%	BAXTER INTL.	BAX	85.79	+	dd-	dd-
83%	BB&T	BBT	51.60	+	+	dd-
17%	BECTON DICKINSON	BDX	249.58	do	d-	uo
78%	BERKSHIRE HATHAWAY	BRKb	207.24	u+	+	o
0%	BIOGEN	BIIB.O	226.99	d-	dd-	d-
11%	BLACKROCK	BLK	423.17	o	dd-	dd-
72%	BOEING	BA	376.54	+	+	d-
33%	BOOKING HOLDINGS	BKNG.O	1'951.56	+	d-	-
11%	BOSTON SCIENTIFIC	BSX	40.35	o	-	-
94%	BRISTOL MYERS SQUIB	BMY	50.88	+	+	+
6%	BROADCOM	AVGO.O	276.08	d-	-	uo
50%	CAMECO (NYS)	CCJ	9.38	-	+	d-
0%	CATERPILLAR	CAT	120.25	d-	dd-	-
94%	CELGENE	CELG.O	99.70	+	+	+
0%	CHARLES SCHWAB	SCHW.K	35.45	dd-	dd-	d-
100%	CHARTER COMMS.CL.A	CHTR.O	430.04	+	+	uu+
0%	CHEVRON	CVX	113.26	d-	-	-
100%	CHUBB	CB	159.66	+	+	+

SCORE	COMPANY	RIC	PRICE	LT	MT	ST
0%	CIGNA	CI	149.20	-	-	-
0%	CISCO SYSTEMS	CSCO.O	47.77	-	d-	d-
67%	CITIGROUP	C	68.15	+	+	d-
78%	CME GROUP	CME.O	213.33	+	u+	u+
39%	COCA COLA	KO	53.87	+	d-	do
6%	COGNIZANT TECH.SLTI	CTSH.O	60.28	-	-	uo
28%	COLGATE-PALM.	CL	71.62	+	dd-	do
50%	COMCAST A	CMCSA.O	44.59	+	do	-
0%	CONOCOPHILLIPS	COP	54.60	-	dd-	-
11%	CONSTELLATION BRAN	STZ	188.74	do	dd-	dd-
83%	COSTCO WHOLESALE	COST.O	293.41	+	+	u+
22%	CROWN CASTLE INTL.	CCI	137.44	+	-	d-
17%	CSX	CSX.O	66.79	-	do	-
56%	CVS HEALTH	CVS	61.99	+	+	d-
22%	DANAHER	DHR	139.68	+	dd-	dd-
78%	DEERE	DE	166.55	+	+	+
0%	DELTA AIR LINES	DAL	53.36	d-	-	-
100%	DOLLAR GENERAL	DG	160.01	+	+	+
94%	DOMINION ENERGY	D	81.18	+	+	+
0%	DOVER	DOV	94.64	dd-	dd-	dd-
33%	DOW CHEMICAL	DOW	45.17	d-	+	d-
100%	DUKE ENERGY	DUK	96.92	+	+	+
0%	EATON	ETN	78.30	dd-	dd-	-
11%	EBAY	EBAY.O	37.82	do	-	-
0%	ECOLAB	ECL	191.11	dd-	-	dd-
83%	EDWARDS LIFESCIENCE	EW	225.18	+	+	+
11%	ELECTRONIC ARTS	EA.O	93.57	do	dd-	d-
17%	ELI LILLY	LLY	107.83	-	do	d-
61%	EMERSON ELECTRIC	EMR	64.45	do	+	dd-
0%	EOG RES.	EOG	69.76	-	-	-
94%	EQUINIX REIT	EQIX.O	577.31	+	+	+
61%	ESTEE LAUDER COS.'A'	EL	195.22	+	do	+
89%	EXELON	EXC	48.46	uu+	uu+	uu+
0%	EXXON MOBIL	XOM	68.02	-	d-	-
11%	FACEBOOK CLASS A	FB.O	179.68	o	-	-
6%	FEDEX	FDX	142.09	-	-	uo
33%	FIDELITY NAT.INFO.SV	FIS	130.57	+	-	dd-
67%	FISERV	FISV.O	104.59	+	uo	u+
11%	FORD MOTOR	F	8.68	o	d-	-
0%	FORTIVE	FTV	65.64	-	-	-
11%	GENERAL DYNAMICS	GD	176.70	do	-	-
11%	GENERAL ELECTRIC	GE	8.56	o	d-	-
83%	GENERAL MILLS	GIS	54.50	+	+	+
0%	GENERAL MOTORS	GM	34.75	d-	-	-
0%	GILEAD SCIENCES	GILD.O	62.73	d-	-	-
11%	GOLDMAN SACHS GP.	GS	200.40	do	d-	-
6%	HCA HEALTHCARE	HCA	118.18	-	-	uo
56%	HOME DEPOT	HD	226.74	+	do	do
0%	HONEYWELL INTL.	HON	163.18	dd-	dd-	dd-
0%	HP	HPQ	16.80	-	d-	dd-

S&P 200 stocks – listed alphabetically (Humana-Z)

SCORE	COMPANY	RIC	PRICE	LT	MT	ST
0%	HUMANA	HUM	255.24	-	-	-
11%	ILLINOIS TOOL WORKS	ITW	150.20	do	dd-	dd-
61%	ILLUMINA	ILMN.O	301.63	-	+	+
72%	INTEL	INTC.O	50.62	+	+	do
83%	INTERCONTINENTAL EX	ICE	94.36	+	u+	u+
67%	INTERNATIONAL BUS.M	IBM	141.28	+	+	dd-
22%	INTUIT	INTU.O	266.76	o	-	u+
56%	INTUITIVE SURGICAL	ISRG.O	526.60	+	+	dd-
11%	IQVIA HOLDINGS	IQV	148.70	o	-	-
67%	JOHNSON & JOHNSON	JNJ	133.16	-	uu+	uu+
33%	JOHNSON CONTROLS I	JCI	42.24	+	dd-	dd-
67%	JP MORGAN CHASE & C	JPM	114.37	+	+	d-
83%	KIMBERLY-CLARK	KMB	140.16	+	+	+
11%	KINDER MORGAN	KMI	20.30	do	dd-	d-
0%	KRAFT HEINZ	KHC.O	26.94	-	dd-	-
83%	LAM RESEARCH	LRCX.O	232.14	+	+	-
11%	LINDE	LIN	188.58	do	dd-	dd-
50%	LOCKHEED MARTIN	LMT	383.78	+	do	d-
61%	LOWE'S COMPANIES	LOW	108.23	+	+	uo
83%	LYONDELLBASELL IND	LYB	84.16	+	+	dd-
94%	MARATHON PETROLEU	MPC	60.40	+	+	+
0%	MARRIOTT INTL.'A'	MAR.O	119.20	d-	-	-
11%	MARSH & MCLENNAN	MMC	97.63	do	d-	-
22%	MASTERCARD	MA	272.19	do	-	u+
39%	MCDONALDS	MCD	211.92	+	-	+
39%	MEDTRONIC	MDT	107.26	+	do	-
56%	MERCK & COMPANY	MRK	84.39	+	o	+
0%	METLIFE	MET	44.95	dd-	dd-	d-
33%	MICRON TECHNOLOGY	MU.O	44.16	+	-	-
22%	MICROSOFT	MSFT.O	137.12	+	dd-	dd-
83%	MONDELEZ INTERNATI	MDLZ.O	55.07	+	+	+
0%	MONSTER BEVERAGE	MNST.O	55.73	-	d-	-
44%	MOODY'S	MCO	208.21	+	-	uu+
11%	MORGAN STANLEY	MS	40.68	o	dd-	-
11%	NETFLIX	NFLX.O	274.46	-	-	uu+
94%	NEXTERA ENERGY	NEE	232.55	+	+	+
89%	NIKE 'B'	NKE	93.17	+	+	+
0%	NORFOLK SOUTHERN	NSC	171.67	-	dd-	d-
50%	NORTHROP GRUMMAN	NOC	367.92	+	do	dd-
100%	NVIDIA	NVDA.O	184.33	+	+	uu+
39%	O REILLY AUTOMOTIVE	ORLY.O	388.95	+	do	dd-
0%	OCCIDENTAL PTL.	OXY	42.18	-	d-	-
33%	ONEOK	OKE	70.72	+	dd-	-
61%	ORACLE	ORCL.K	54.80	do	+	+
61%	PAYCHEX	PAYX.O	82.93	-	+	+
0%	PAYPAL HOLDINGS	PYPL.O	101.62	-	-	d-
100%	PEPSICO	PEP.O	138.34	+	+	+
6%	PFIZER	PFE	35.83	-	d-	uo
44%	PHILIP MORRIS INTL.	PM	77.17	o	o	+
67%	PHILLIPS 66	PSX	101.36	+	+	d-

SCORE	COMPANY	RIC	PRICE	LT	MT	ST
94%	PNC FINL.SVS.GP.	PNC	139.95	+	+	+
72%	PROCTER & GAMBLE	PG	122.84	+	+	do
0%	PROGRESSIVE OHIO	PGR	75.76	-	d-	dd-
78%	PROLOGIS	PLD	85.76	+	+	+
17%	PRUDENTIAL FINL.	PRU	86.99	d-	do	dd-
94%	PUB.SER.ENTER.GP.	PEG	62.16	+	+	+
33%	PUBLIC STORAGE	PSA	246.62	+	-	u+
56%	QUALCOMM	QCOM.O	76.34	+	do	uo
83%	RAYTHEON 'B'	RTN	193.98	+	+	d-
89%	REGENCY CENTERS	REG.O	68.14	+	+	+
11%	REGENERON PHARMS.	REGN.O	283.81	-	-	uu+
0%	ROPER TECHNOLOGIES	ROP	338.56	d-	-	d-
78%	ROSS STORES	ROST.O	108.14	+	+	+
39%	S&P GLOBAL	SPGI.K	245.58	+	-	o
0%	SALESFORCE.COM	CRM	148.80	-	-	-
0%	SCHLUMBERGER	SLB	31.80	d-	-	-
100%	SEMPRA EN.	SRE	146.43	+	+	+
94%	SHERWIN-WILLIAMS	SHW	549.28	+	+	+
17%	SIMON PROPERTY GRO	SPG	148.22	-	do	dd-
94%	SOUTHERN	SO	61.92	+	+	+
56%	SOUTHWEST AIRLINES	LUV	53.04	+	+	-
11%	STARBUCKS	SBUX.O	85.85	do	-	d-
33%	STRYKER	SYK	212.94	+	d-	d-
83%	SYSCO	SYY	78.22	+	+	dd-
100%	TARGET	TGT	107.95	+	+	uu+
11%	TE CONNECTIVITY	TEL	88.50	do	dd-	-
83%	TEXAS INSTRUMENTS	TXN.O	128.85	+	+	+
11%	TRAVELERS COS.	TRV	143.15	do	d-	dd-
89%	TJX	TJX	55.73	+	+	+
0%	TRANSOCEAN	RIG	4.17	-	-	-
0%	UNION PACIFIC	UNP	155.91	-	-	-
33%	UNITED PARCEL SER.'B'	UPS	115.57	+	dd-	-
67%	UNITED TECHNOLOGIE	UTX	132.69	+	+	d-
6%	UNITEDHEALTH GROU	UNH	221.24	-	-	uo
33%	US BANCORP	USB	53.93	+	dd-	d-
94%	V F	VFC	88.30	+	+	+
67%	VALERO ENERGY	VLO	83.42	+	+	dd-
83%	VERIZON COMMUNICA'	VZ	60.25	+	+	+
11%	VERTEX PHARMS.	VRTX.O	172.05	-	-	u+
22%	VISA 'A'	V	174.90	o	-	u+
0%	WALGREENS BOOTS AL	WBA.O	52.76	dd-	dd-	dd-
72%	WALMART	WMT	117.23	+	+	do
6%	WALT DISNEY	DIS	130.90	-	-	uo
28%	WASTE MANAGEMENT	WM	115.71	do	-	+
83%	WELLS FARGO & CO	WFC	48.81	+	+	dd-
89%	WELLTOWER	WELL.K	91.54	+	+	+
0%	WILLIAMS	WMB	23.48	-	d-	-
6%	XILINX	XLNX.O	92.63	-	-	uo
50%	YUM! BRANDS	YUM	113.69	+	-	+
83%	ZOETIS	ZTS	126.07	+	u+	+

Dow Jones 30 Industrial Index constituent stocks

SCORE	COMPANY	RIC	PRICE	LT	MT	ST	COMMENT	DATE BOUGHT	PRICE BOUGHT	PROFIT or LOSS
0%	3M	MMM	153.52	-	d-	-				
0%	AMERICAN EXPRESS	AXP	113.65	-	-	d-	Next support is 109.			
100%	APPLE	AAPL.O	227.06	+	+	+	Likely to have peaked at 229. Sell signals to be triggered if 223, 220, 215, 205 is broken.			
72%	BOEING	BA	376.54	+	+	d-	Must clear 392 to signal 405 or 435. Sell signal if 363 is broken.	10.09.2019	358.80	4.94%
0%	CATERPILLAR	CAT	120.25	d-	dd-	-	Sell signal was triggered with the break of 124.50.			
0%	CHEVRON	CVX	113.26	d-	-	-	Sell signal was triggered with the break of 116.50.			
0%	CISCO SYSTEMS	CSCO.O	47.77	-	d-	d-				
39%	COCA COLA	KO	53.87	+	d-	do	Sell signal to be triggered if 52.50 is broken.			
33%	DOW CHEMICAL	DOW	45.17	d-	+	d-				
0%	EXXON MOBIL	XOM	68.02	-	d-	-	Sell signal was triggered with the break of 69.50.			
11%	GOLDMAN SACHS GP.	GS	200.40	do	d-	-	Sell signal was triggered with break of 211 and 202.			
56%	HOME DEPOT	HD	226.74	+	do	do	Next sell signal to be triggered if 222 is broken.			
72%	INTEL	INTC.O	50.62	+	+	do				
67%	INTERNATIONAL BUS.M	IBM	141.28	+	+	dd-	Turned down at the resistance 147.			
67%	JOHNSON & JOHNSON	JNJ	133.16	-	uu+	uu+	Major resistance is at 135.50.			
67%	JP MORGAN CHASE & C	JPM	114.37	+	+	d-	Sell the position if 110 is broken.	10.09.2019	115.40	-0.89%
39%	MCDONALDS	MCD	211.92	+	-	+	Sell signals were triggered with the break of 215.50 and 212.50. Sell again <205, 199.			
56%	MERCK & COMPANY	MRK	84.39	+	o	+				
22%	MICROSOFT	MSFT.O	137.12	+	dd-	dd-	Could be topping at the long-term resistance at 142.50. Sell if 135 / 133 is broken.			
89%	NIKE 'B'	NKE	93.17	+	+	+	Next resistance levels are 94.50, 96.50 and 98.			
6%	PFIZER	PFE	35.83	-	d-	uo				
72%	PROCTER & GAMBLE	PG	122.84	+	+	do	Could register a top just below major resistance at 126.			
11%	TRAVELERS COS.	TRV	143.15	do	d-	dd-	Next sell signal to be triggered if 133.50 is broken.			
67%	UNITED TECHNOLOGIE	UTX	132.69	+	+	d-				
6%	UNITEDHEALTH GROU	UNH	221.24	-	-	uo				
83%	VERIZON COMMUNICA	VZ	60.25	+	+	+	Sold the position with the break of 59.80 at a minor profit of 3.5%.			
22%	VISA 'A'	V	174.90	o	-	u+	Next sell signal if 168 is broken.			
0%	WALGREENS BOOTS AL	WBA.O	52.76	dd-	dd-	dd-				
72%	WALMART	WMT	117.23	+	+	do	Sell signals to be triggered if 113, 110.50 and 109 are broken.			
6%	WALT DISNEY	DIS	130.90	-	-	uo	Major support is at 127 and 122.			
37.59%	Average Score for all 30 stocks									

The Total Score for all 30 constituent stocks in the Dow Jones Industrial Index has declined from last week's 54% to the present 38%. This means the Total Score for the Dow Jones Industrial Index is **NEGATIVE / BEARISH**.

AMAZON – daily chart (from 16.7.2019)

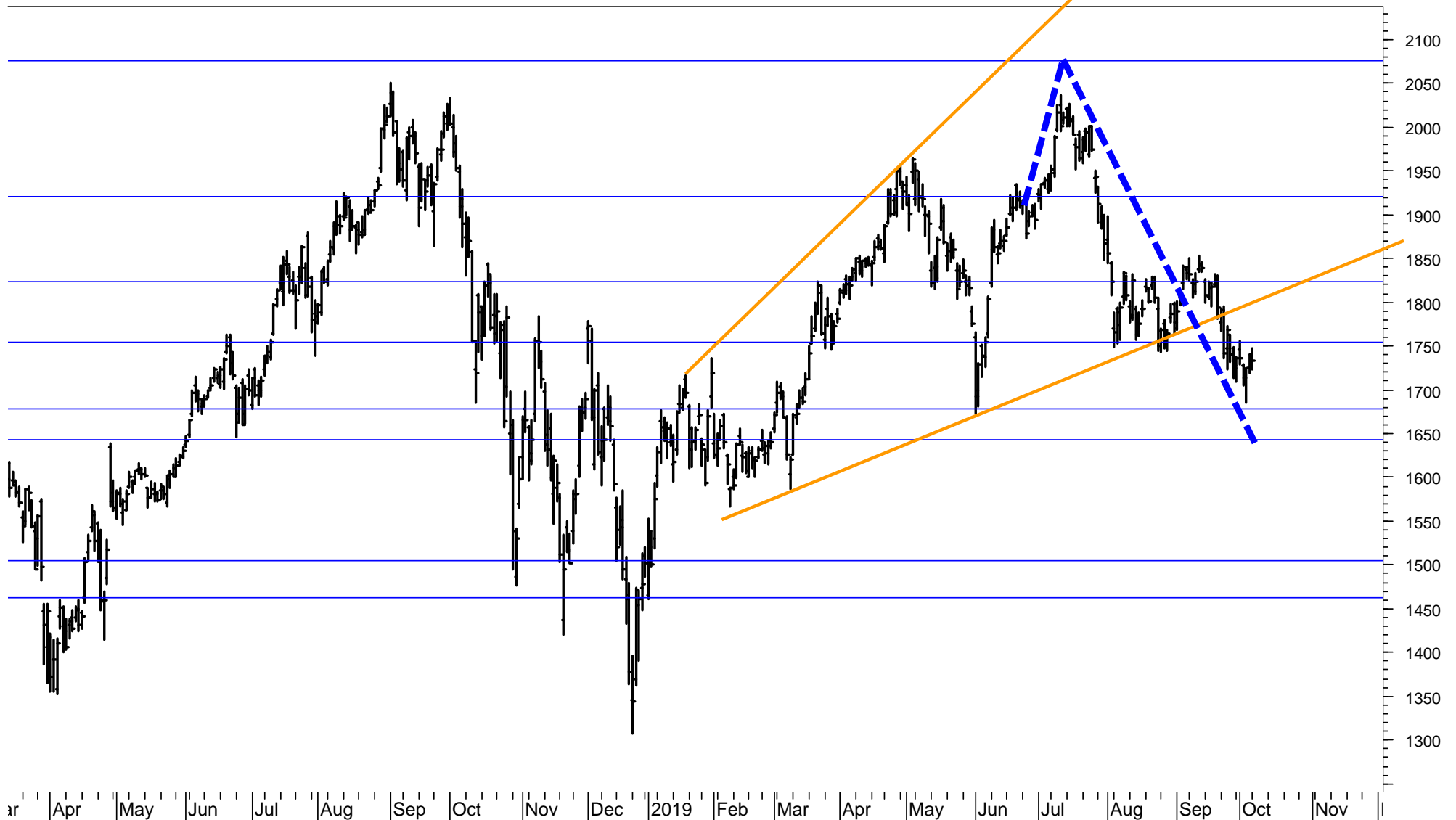
The chart below is reprinted from my Chart Outlook Equities of 16th July 2019, when I did forecast the top of the Expanding Wedge at around 2080 in August. See the updated chart on the next page.



AMAZON – daily chart

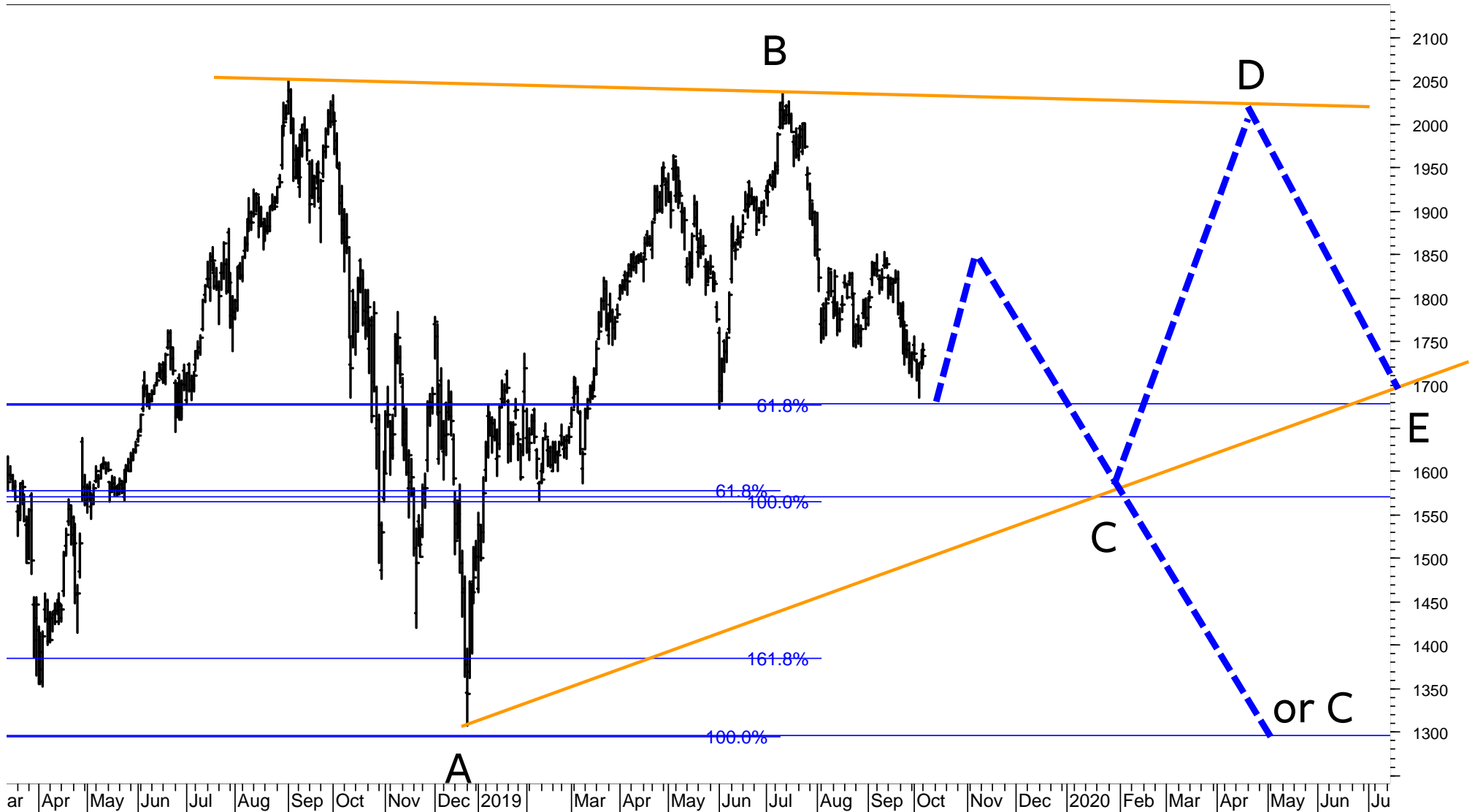
The top was reached slightly earlier, on 11th July and marginally below my target, at 2036. Since this high, Amazon fell to 1680, a drop of 17%.

On the next page, I show you how the pattern could continue from here.



AMAZON – daily chart

Amazon reached the support at 1680. A rebound could be seen from here. But, the large pattern from September 2018 is likely to form a Horizontal Triangle. The 61.80% retracement support for Wave C is 1570. A break of 1570 would mean the pattern from 2018 is a FLAT instead of a Triangle. Wave equality between Wave C and A would be reached at 1300.



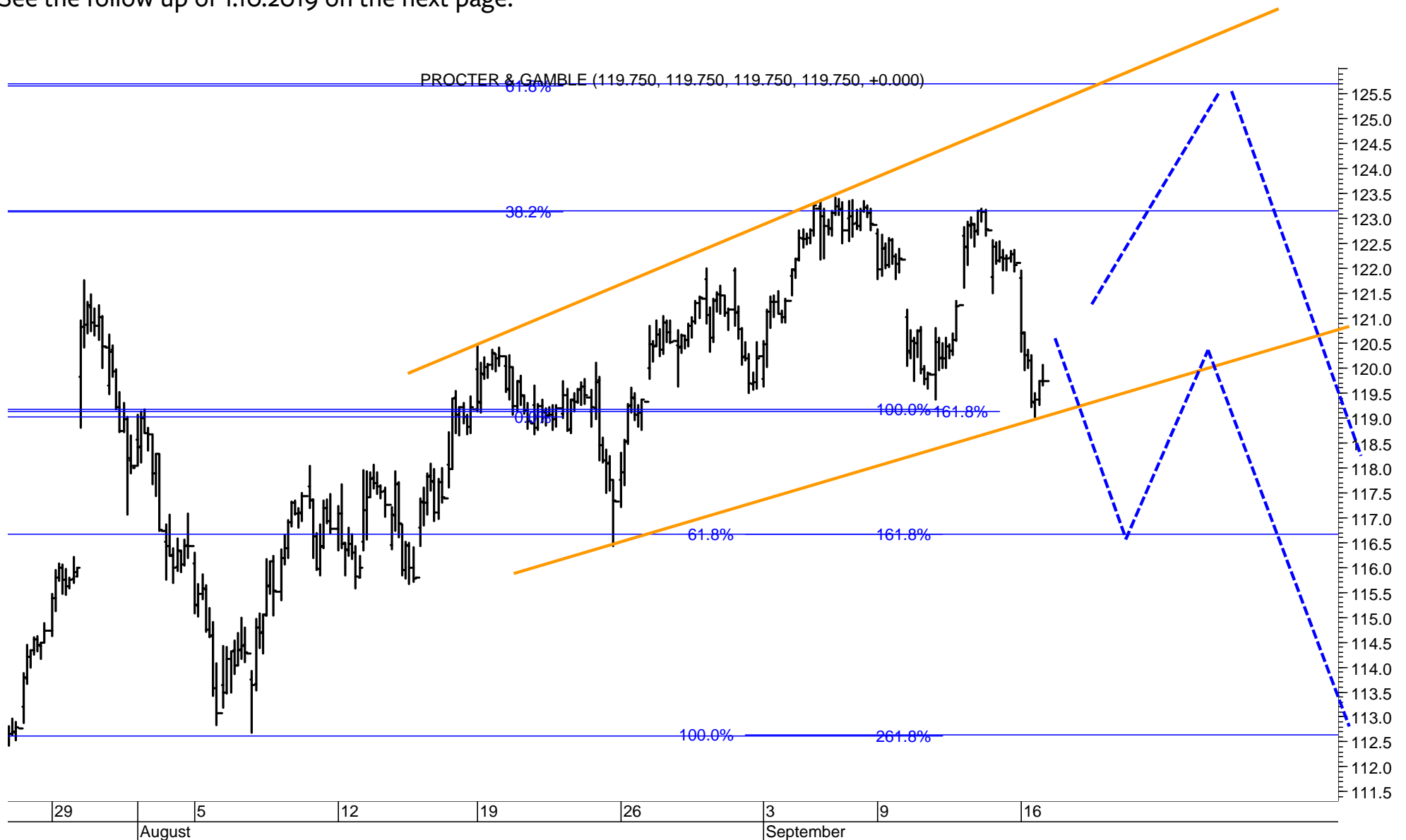
Procter & Gamble (from 1.9.2017)

I published the chart below in my Chart Outlook of 1st September 2017. Thus, it is 2 years ago, that I did forecast a rise in Procter & Gamble to a new high, either at 100 or at around 120. Over these past two years, the stock has surged to 125, much quicker than I expected. It appears that now it could be topping. See the next 3 pages.



PROCTER & GAMBLE – hourly chart (reprinted from my Chart Outlook of 17.9.2019)

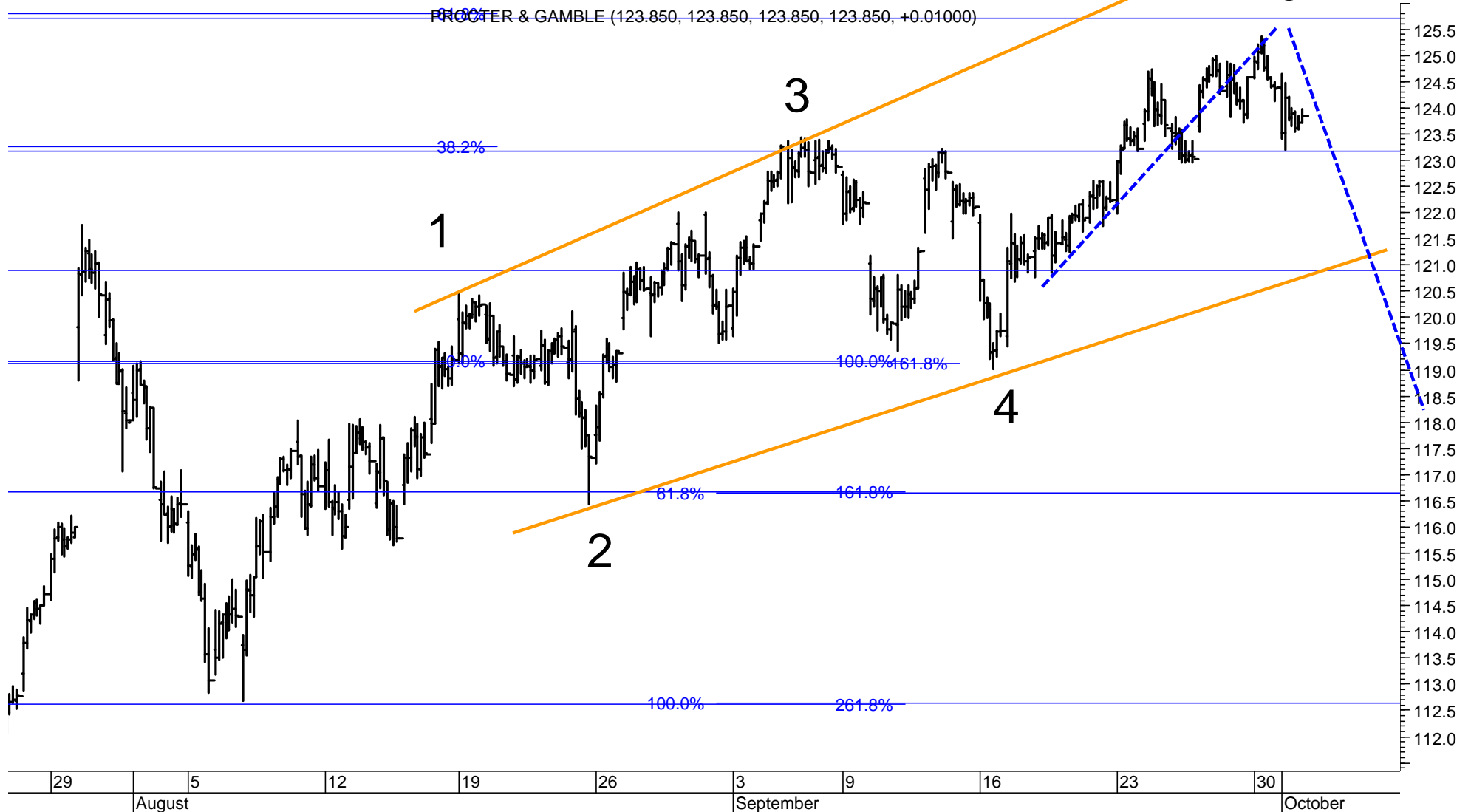
I stated that: „Procter will trigger a SELL signal if the supports at 119 and 116.50 are broken.“
 I had located the most critical support at 119.
 See the follow up of 1.10.2019 on the next page.



PROCTER & GAMBLE – hourly chart (reprinted from my Chart Outlook of 1.10.2019)

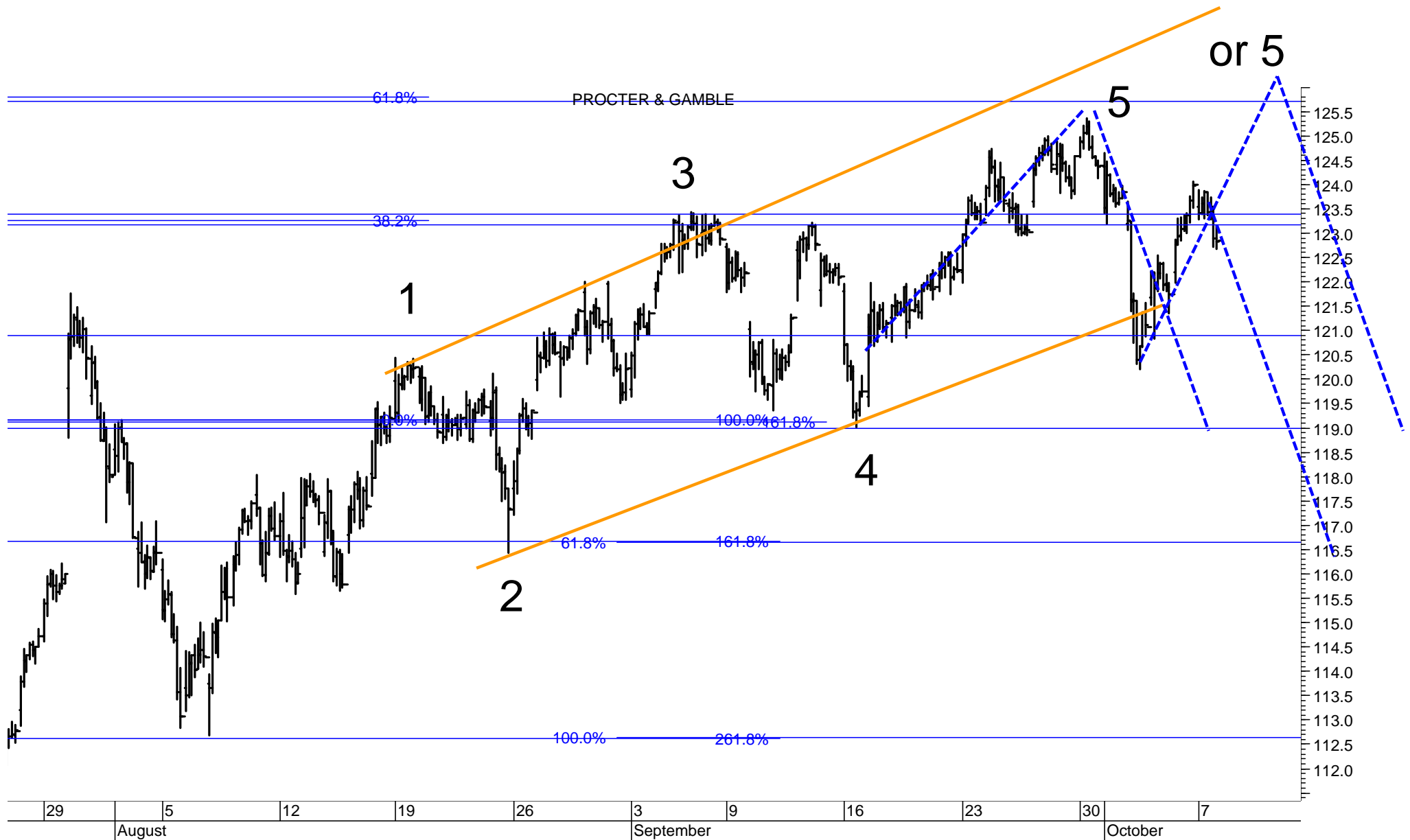
Procter & Gamble turned up exactly at the support level, which I had located at 119. I stated: „I still believe the rise from August is forming a Wedge and that Wave 5 is topping. The rally from mid September has reached the target, which I had indicated on 17.9.2019 at 125.50. I expect Procter to enter a major correction from this major resistance.“

See the follow-up on the next page.

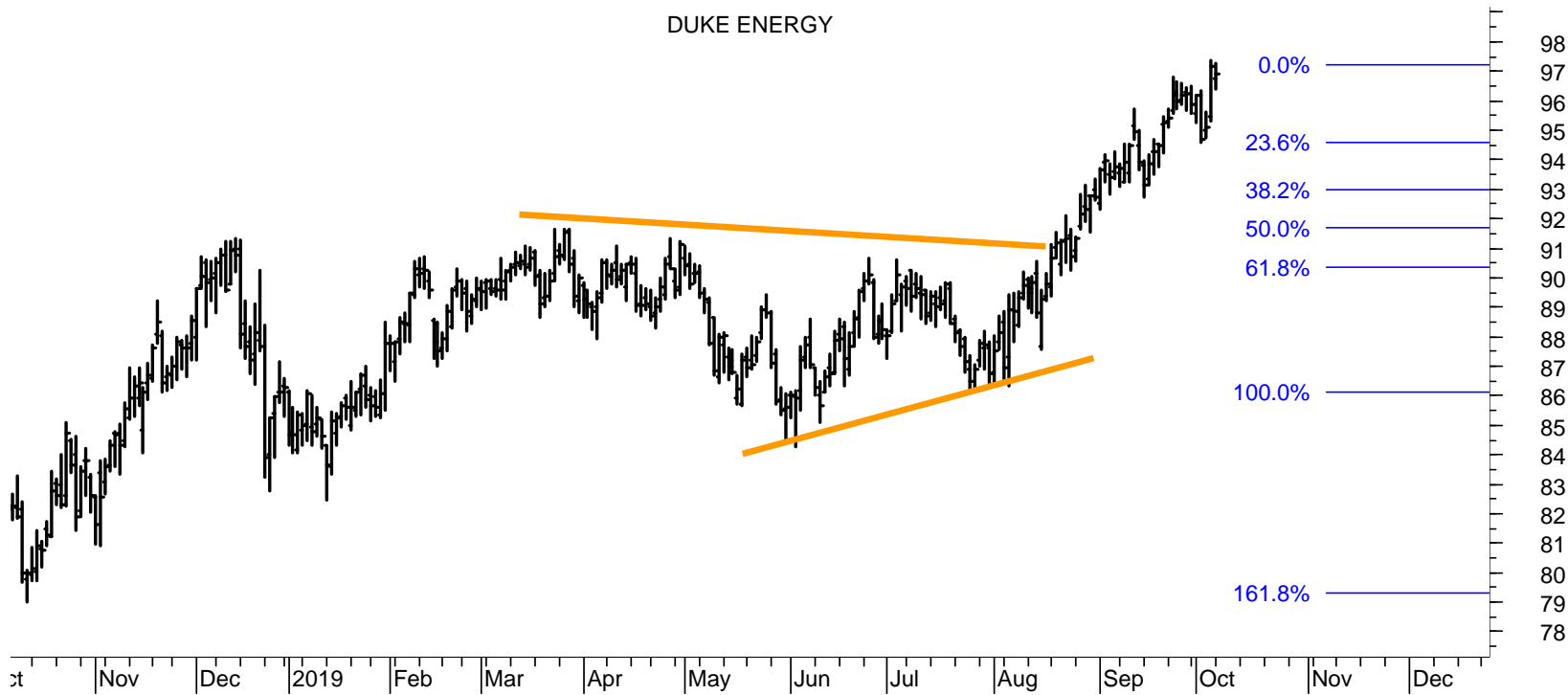


PROCTER & GAMBLE – hourly chart

Procter & Gamble sold off from 125.50 to 120.
 Clearly, the major downtrend would be signaled / confirmed if 121 / 119 is broken.



DUKE ENERGY



I recommended purchase of Duke when it broke out of the triangle in August. I am watching the supports at 94.50 and 93 to take profit. A break of these supports would signal that the uptrend is over for now.

FACEBOOK INC A



Facebook fell to 174, the level which I had identified as sell level. If the support 174 is broken the next supports are 163, 155, 145 or 125.

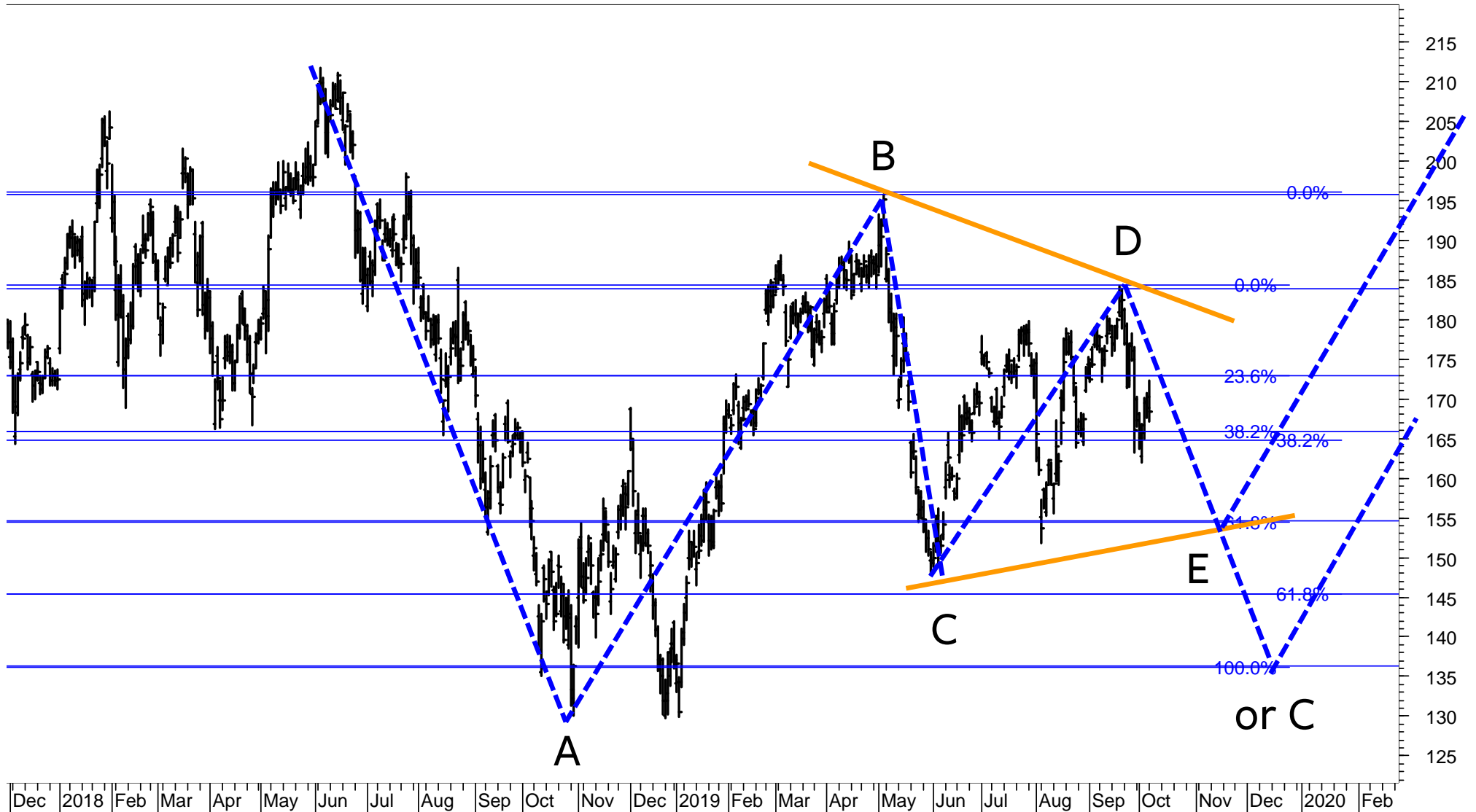
JAPAC 100 stocks – listed according to the Score (range from 100% to 0%, 40%-60% is neutral)

SCORE	COMPANY	RIC	PRICE	LT	MT	ST
100%	KDDI/d	9433.T	2'955.00	+	u+	uu+
100%	TAIWAN SEMICON/d	2330.TW	286.50	+	+	+
100%	WOONGJIN COWAY/d	021240.KS	80'700.00	+	+	+
94%	NTT DOCOMO/d	9437.T	2'866.00	+	+	uu+
94%	NTT/d	9432.T	5'418.00	+	+	uu+
94%	SAMSUNG BIOLOG/d	207940.KS	329'000.00	+	+	u+
89%	LG ELECTRONICS/d	066570.KS	68'400.00	u+	+	+
89%	RELIANCE/d	RELI.NS	1'310.10	+	+	+
89%	SAMSUNG EL-MEC/d	009150.KS	110'500.00	+	+	+
89%	S-OIL/d	010950.KS	100'500.00	+	+	uo
83%	CELLTRION HEAL/d	091990.KQ	55'700.00	u+	+	u+
83%	CENTRAL JAPAN /d	9022.T	22'565.00	u+	+	u+
83%	KT G/d	033780.KS	102'000.00	+	+	dd-
83%	NAVER/d	035420.KS	153'000.00	+	+	dd-
78%	AMOREPACIFIC/d	090430.KS	150'500.00	o	+	+
78%	CELLTRION/d	068270.KS	180'500.00	uo	+	uu+
78%	SK HOLDINGS/d	034730.KS	230'000.00	uo	+	uu+
72%	KOREA SHIPBUIL/d	009540.KS	126'000.00	+	+	dd-
72%	LG HOUSEHOLD/d	051900.KS	1'319'000.00	+	+	dd-
67%	SAMSUNG ELEC-1/d	005935.KS	39'700.00	+	+	d-
67%	SAMSUNG ELECTR/d	005930.KS	48'900.00	+	+	dd-
67%	SK HYNIX/d	000660.KS	81'000.00	+	+	dd-
61%	GS HOLDINGS/d	078930.KS	49'800.00	do	+	dd-
61%	HANMI PHARM/d	128940.KS	293'000.00	-	u+	uu+
61%	RECRUIT HOLDIN/d	6098.T	3'466.00	uo	uu+	u+
56%	HONDA MOTOR/d	7267.T	2'724.00	+	+	-
56%	JAPAN TOBACCO/d	2914.T	2'346.00	-	+	do
56%	MIZUHO FINANC/d	8411.T	161.90	+	+	d-
50%	HANKOOK TIR TE/d	161390.KS	30'650.00	d-	+	dd-
50%	HYUNDAI HEAVY /d	267250.KS	339'500.00	+	do	d-
50%	KAKAO/d	035720.KS	134'500.00	+	do	dd-
50%	KALBE FARMA TB/d	KLBF.JK	1'655.00	+	do	dd-
50%	KAO CORPORATIO/d	4452.T	8'060.00	-	+	dd-
50%	LG UPLUS/d	032640.KS	13'700.00	d-	+	dd-
50%	MITSUB UFJ FG/d	8306.T	535.40	+	do	-
50%	SHIN-ETSU CHEM/d	4063.T	11'155.00	+	do	d-
50%	SONY CORP/d	6758.T	6'207.00	+	do	-
44%	CHAROEN POKPHA/d	CPIN.JK	5'175.00	do	+	dd-
44%	HANA FINANCIAL/d	086790.KS	33'950.00	do	+	d-
44%	SAMSUNG HEAVY/d	010140.KS	7'980.00	o	+	-
39%	FANUC LTD/d	6954.T	19'590.00	+	do	dd-
33%	HYUNDAI ENG&CO/d	000720.KS	44'800.00	-	+	d-
33%	HYUNDAI MOBIS/d	012330.KS	244'000.00	+	dd-	dd-
33%	IBK/d	024110.KS	12'600.00	d-	+	d-
33%	TOYOTA MOTOR C/d	7203.T	7'087.00	+	dd-	-
28%	BANK OF CHINA/d	3988.HK	3.0800	o	do	-
28%	INFOSYS LTD/d	INFY.NS	789.55	+	dd-	uo
28%	LOTTE CHEMICAL/d	011170.KS	232'000.00	o	do	-
28%	NCSoft/d	036570.KS	521'000.00	+	-	uo
28%	TAKEDA PHARM/d	4502.T	3'694.00	o	do	-

SCORE	COMPANY	RIC	PRICE	LT	MT	ST
22%	BHARTI AIRTEL/d	BRTI.NS	339.50	+	dd-	dd-
22%	KIA MOTORS/d	000270.KS	43'750.00	+	dd-	dd-
22%	TELKOM INDONES/d	TLKM.JK	4'130.00	+	d-	dd-
17%	DB INSURANCE/d	005830.KS	50'300.00	-	do	d-
17%	E-MART/d	139480.KS	108'500.00	-	o	-
17%	JAPAN POST HLD/d	6178.T	996.00	-	do	-
17%	KANGWON LAND/d	035250.KS	29'300.00	-	do	d-
17%	LOTTE SHOPPING/d	023530.KS	126'000.00	-	o	-
17%	NETMARBLE/d	251270.KS	95'600.00	d-	do	-
17%	SAMSUNG C&T/d	028260.KS	89'800.00	-	do	d-
11%	ALIBABA GRP AD/d	BABA.K	170.34	o	-	-
11%	CANON INC/d	7751.T	2'850.00	o	d-	d-
11%	HYUNDAI GLOVIS/d	086280.KS	151'000.00	do	d-	dd-
11%	HYUNDAI MOTOR/d	005380.KS	129'000.00	do	dd-	dd-
11%	KB FGI/d	105560.KS	41'650.00	o	dd-	d-
11%	MIRAE ASSET DW/d	006800.KS	7'290.00	o	d-	-
11%	POSCO/d	005490.KS	221'000.00	o	dd-	-
11%	SAMSUNG LIFE/d	032830.KS	69'800.00	o	dd-	-
11%	SHINHAN FINANC/d	055550.KS	41'300.00	o	dd-	-
11%	SK INNOVATION/d	096770.KS	168'500.00	o	dd-	-
11%	TENCENT/d	0700.HK	325.20	o	-	-
6%	GUDANG GARAM T/d	GGRM.JK	49'825.00	-	-	uo
6%	H M SAMPOERNA/d	HMSA.JK	2'130.00	-	-	uo
6%	TATA CONSULT/d	TCS.NS	2'047.70	-	-	do
0%	ASTRA INTL TBK/d	ASII.JK	6'300.00	-	d-	-
0%	BANK BNI TBK/d	BBNI.JK	6'675.00	-	-	-
0%	BANK MANDIRI T/d	BMRI.JK	6'475.00	-	-	-
0%	BANK RAKYAT IN/d	BBRI.JK	3'910.00	-	-	-
0%	CNOOC/d	0883.HK	11.56	-	d-	-
0%	FAST RETAILING/d	9983.T	61'160.00	d-	d-	-
0%	HANON SYSTEMS/d	018880.KS	11'450.00	dd-	dd-	d-
0%	HYUNDAI STEEL/d	004020.KS	36'800.00	d-	dd-	-
0%	INDAH KIAT PUL/d	INKP.JK	5'975.00	-	-	-
0%	INDOCEMENT P/d	INTP.JK	17'900.00	-	-	-
0%	KOREA ELEC POW/d	015760.KS	25'400.00	d-	dd-	dd-
0%	KOREA ZINC/d	010130.KS	433'000.00	dd-	dd-	dd-
0%	LG CHEM/d	051910.KS	289'000.00	-	-	-
0%	LG CORP/d	003550.KS	67'400.00	d-	-	-
0%	LG DISPLAY/d	034220.KS	13'600.00	-	dd-	-
0%	MITSUBISHI COR/d	8058.T	2'640.00	-	-	-
0%	NISSAN MOTOR C/d	7201.T	660.80	-	d-	-
0%	SAMSUNG FIRE I/d	000810.KS	217'000.00	-	-	-
0%	SAMSUNG SDI/d	006400.KS	226'000.00	-	-	d-
0%	SAMSUNG SDS/d	018260.KS	192'500.00	-	-	-
0%	SEMEN INDONESIA/d	SMGR.JK	11'350.00	-	-	-
0%	SK TELECOM/d	017670.KS	236'000.00	-	d-	dd-
0%	SMFG/d	8316.T	3'628.00	d-	dd-	d-
0%	SOFTBANK GROUP/d	9984.T	4'191.00	-	-	-
0%	UNILEVER INDON/d	UNVR.JK	44'425.00	dd-	dd-	d-
0%	UNITED TRACTOR/d	UNTR.JK	20'225.00	-	-	-

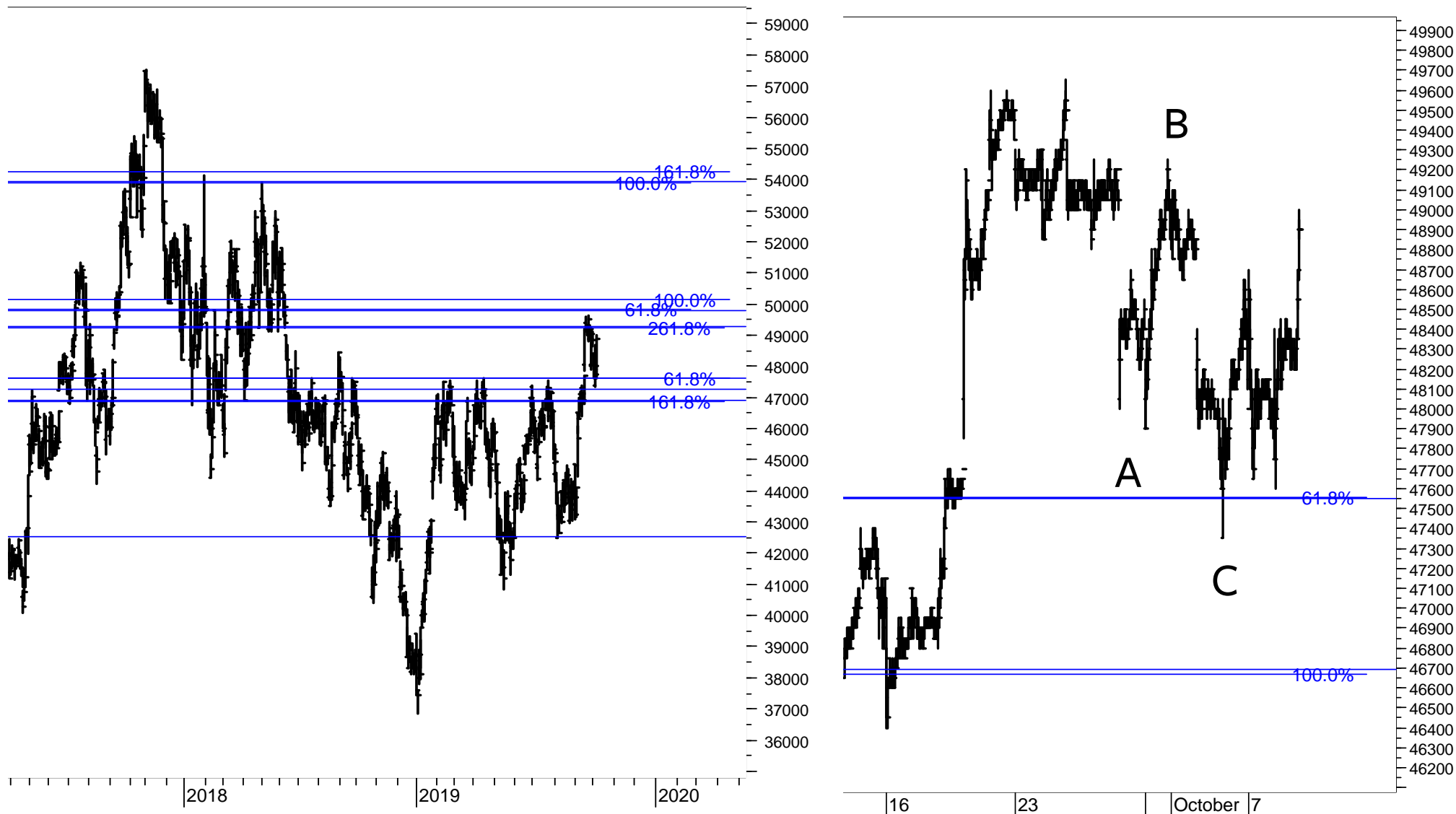
ALIBABA

Alibaba continues to form the Horizontal Triangle, which originated in June 2018. It is likely to trace out the final Wave E down to supports at 165 or 155. The present Triangle would be negated if supports at 145 and 135 are broken.



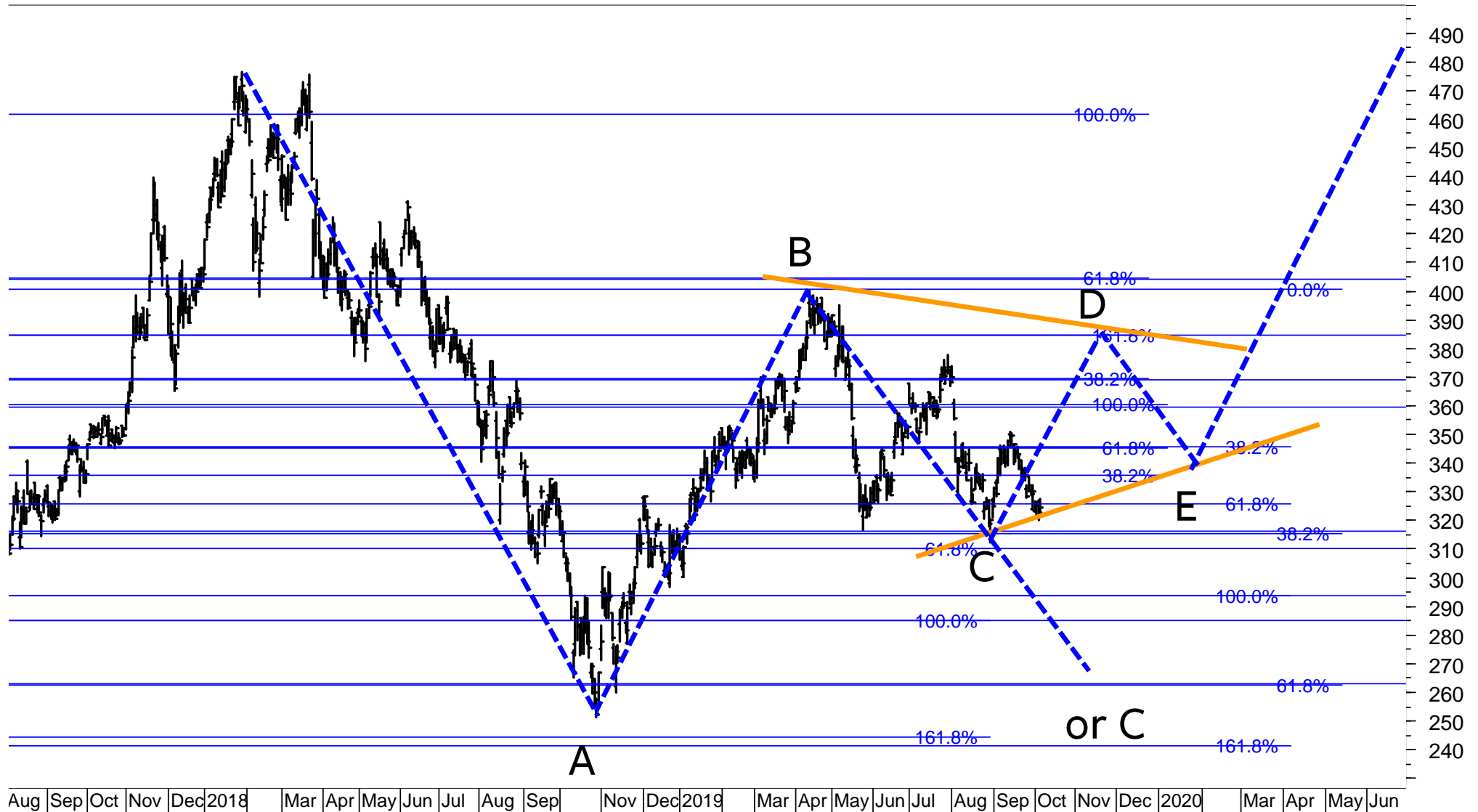
SAMSUNG ELECTRONICS - daily chart (left) and 30-minute chart (right)

Over the last two weeks Samsung has been consolidating its breakout above 47.5k and below 49.5k. This consolidation appears as a corrective A-B-C (at right). This structure implies that Samsung could soon break the next resistance range 49k to 50.5k and rise towards 54k. I would add to the position only if 50k is broken. Supports are at 47.55k and 46.65k.



TENCENT

Tencent is likely to continue forming the Horizontal Triangle, which originated in January 2018. The Triangle would be negated if 315 / 310 is clearly broken. Then, Tencent could fall to 295 / 285 or 265 / 260. Until or unless Tencent breaks above 405 it remains unclear if the structure from 2018 is Wave 4 within the long-term uptrend with a new all-time high to be registered in 2020 or if it is part of a long-term downtrend, which originated in 2018. In fact, this is the case for many if not most technology stocks worldwide.

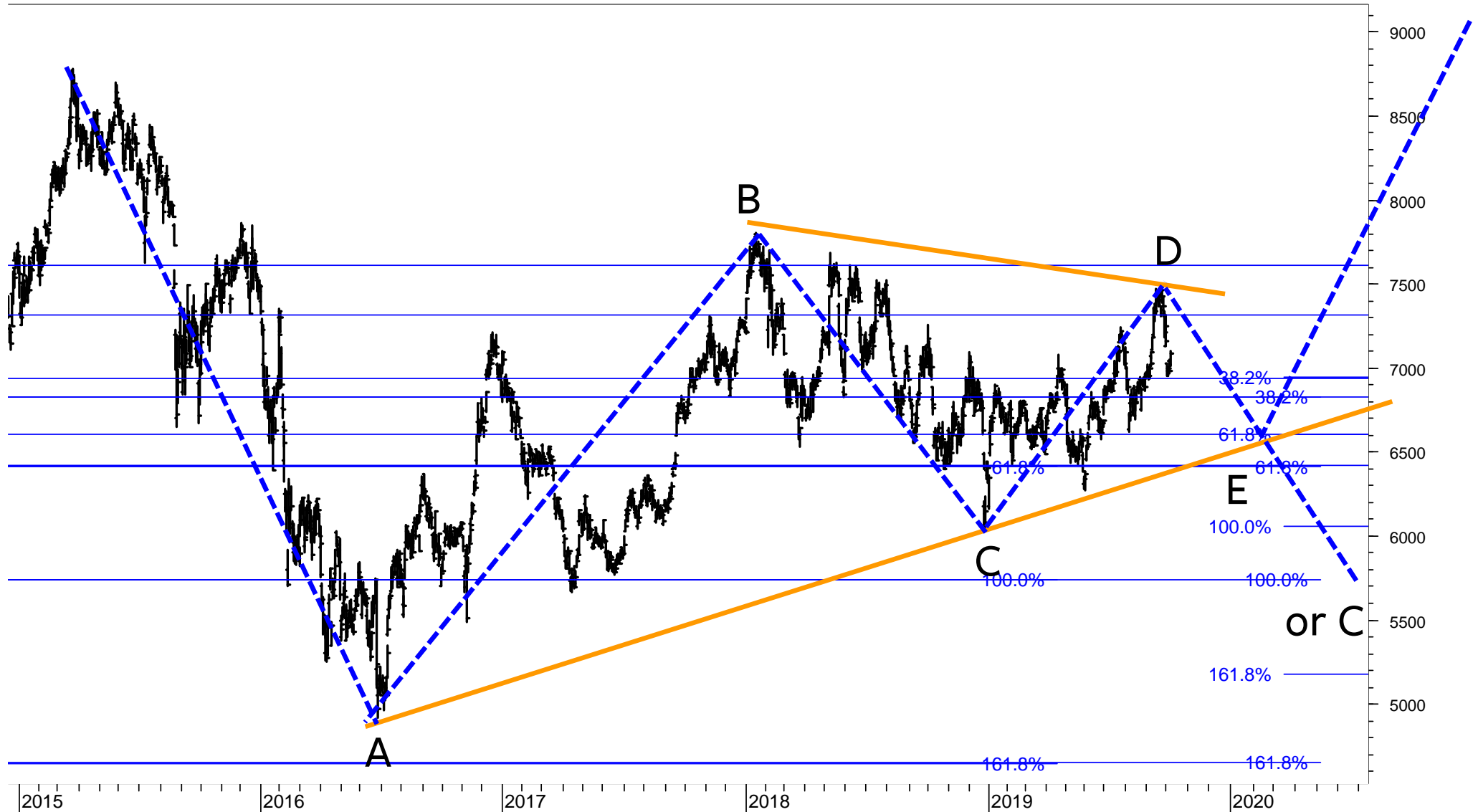


TOYOTA

Toyota fell to the major support at 6900 / 6800, the levels which mark key supports if the decline from September 2019 is to be labeled as part of the Horizontal Triangle, which began in 2015.

Lower supports are 6600 or 6400.

I would sell the position if 6800 is broken.



Disclaimer

Copyright © 2018 and 2019; FinChartOutlook GmbH, Rolf Bertschi, all rights reserved.

This Publication is designed for sophisticated money managers who are aware of the risk in securities investments and market forecasting. The analysis herein is based both on technical and cyclic readings and the recommendations represent the opinion of the Publisher, FinChartOutlook GmbH. Past performance does not imply or guarantee profitable results in the future. Before making specific investments, further investigation is recommended. Although the information contained in this Publication has been derived from sources which are believed to be reliable, they are not always necessarily complete and cannot be guaranteed. Neither the Publisher, FinChartOutlook GmbH, nor any of its employees, affiliates or subsidiaries shall have any liability for any loss, harm or other detriment which has been sustained by any natural person or entity that has relied on the information contained in this Publication. Any person or entity who does rely on any information contained in this Publication does so at his/her own risk and by doing so assumes all liability for any such loss, harm or other detriment. Employees of the Publisher may at times have positions in the securities referred to in this Publication and may make purchases or sales of these securities while the Publication is in circulation. An advisor / client relationship is not created by the distribution or delivery of this publication.

The information published and opinions expressed are provided by FinChartOutlook GmbH for personal use and for informational purposes only. The information is not intended to provide specific financial, investment, tax, legal or accounting advice for you, and is not intended to be relied upon in that regards. You should not act or rely on the information without professional assistance. Non information published in this Publication constitutes an offer or recommendation, to buy or sell any investment instruments, to effect any transactions, or to conclude any legal act of any kind whatsoever. FinChartOutlook GmbH disclaims, without intention, all liability for any loss or damage of any kind, including any direct, indirect or consequential damages, which might be incurred through the use of any information in this presentation. The entire content of this paper is subject to copyright with all rights reserved. You may save or print out a hard copy, provided that you do not remove any copyright or other proprietary notices. All property rights shall remain with FinChartOutlook GmbH. The content of this Publication may not be reproduced (in whole or in part), transmitted (by electronic means or otherwise), modified, linked into or used for any public or commercial purpose without the prior written permission of Rolf P. Bertschi, FinChartOutlook GmbH.

Sources

The charts in this publication are from Metastock and Datastream from Thomson Reuters Equis. All indicators and analyses are by Rolf Bertschi.

Explanations

For a more detailed explanation of the Trend and Momentum Models applied in this Chart Outlook, please see

www.chartoutlook.com

www.rolfbertschi.ch

E-Mail

rolf.bertschi@chartoutlook.ch

FinChartOutlook GmbH, Rolf P. Bertschi, Dörflistrasse 17, 8903 Birmensdorf ZH, Switzerland

Disclaimer

Copyright © 2018 and 2019; FinChartOutlook GmbH, Rolf Bertschi, all rights reserved.

This Publication is designed for sophisticated money managers who are aware of the risk in securities investments and market forecasting. The analysis herein is based both on technical and cyclic readings and the recommendations represent the opinion of the Publisher, FinChartOutlook GmbH. Past performance does not imply or guarantee profitable results in the future. Before making specific investments, further investigation is recommended. Although the information contained in this Publication has been derived from sources which are believed to be reliable, they are not always necessarily complete and cannot be guaranteed. Neither the Publisher, FinChartOutlook GmbH, nor any of its employees, affiliates or subsidiaries shall have any liability for any loss, harm or other detriment which has been sustained by any natural person or entity that has relied on the information contained in this Publication. Any person or entity who does rely on any information contained in this Publication does so at his/her own risk and by doing so assumes all liability for any such loss, harm or other detriment. Employees of the Publisher may at times have positions in the securities referred to in this Publication and may make purchases or sales of these securities while the Publication is in circulation. An advisor / client relationship is not created by the distribution or delivery of this publication.

The information published and opinions expressed are provided by FinChartOutlook GmbH for personal use and for informational purposes only. The information is not intended to provide specific financial, investment, tax, legal or accounting advice for you, and is not intended to be relied upon in that regards. You should not act or rely on the information without professional assistance. Non information published in this Publication constitutes an offer or recommendation, to buy or sell any investment instruments, to effect any transactions, or to conclude any legal act of any kind whatsoever. FinChartOutlook GmbH disclaims, without intention, all liability for any loss or damage of any kind, including any direct, indirect or consequential damages, which might be incurred through the use of any information in this presentation. The entire content of this paper is subject to copyright with all rights reserved. You may save or print out a hard copy, provided that you do not remove any copyright or other proprietary notices. All property rights shall remain with FinChartOutlook GmbH. The content of this Publication may not be reproduced (in whole or in part), transmitted (by electronic means or otherwise), modified, linked into or used for any public or commercial purpose without the prior written permission of Rolf P. Bertschi, FinChartOutlook GmbH.

Sources

The charts in this publication are from Metastock and Datastream from Thomson Reuters Equis. All indicators and analyses are by Rolf Bertschi.

Explanations

For a more detailed explanation of the Trend and Momentum Models applied in this Chart Outlook, please see

www.chartoutlook.com

www.rolfbertschi.ch

E-Mail

rolf.bertschi@chartoutlook.ch

FinChartOutlook GmbH, Rolf P. Bertschi, Dörflistrasse 17, 8903 Birmensdorf ZH, Switzerland