

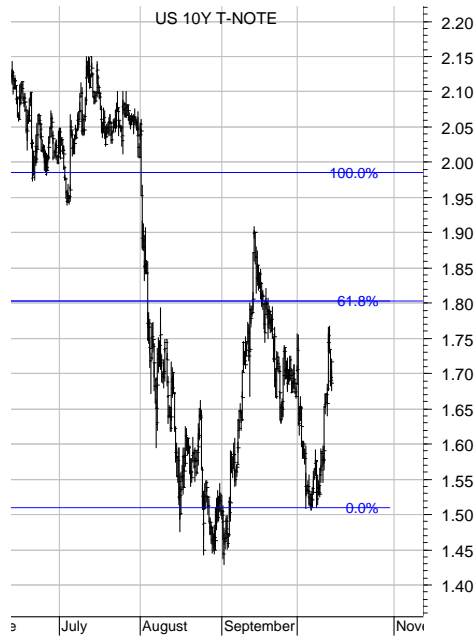
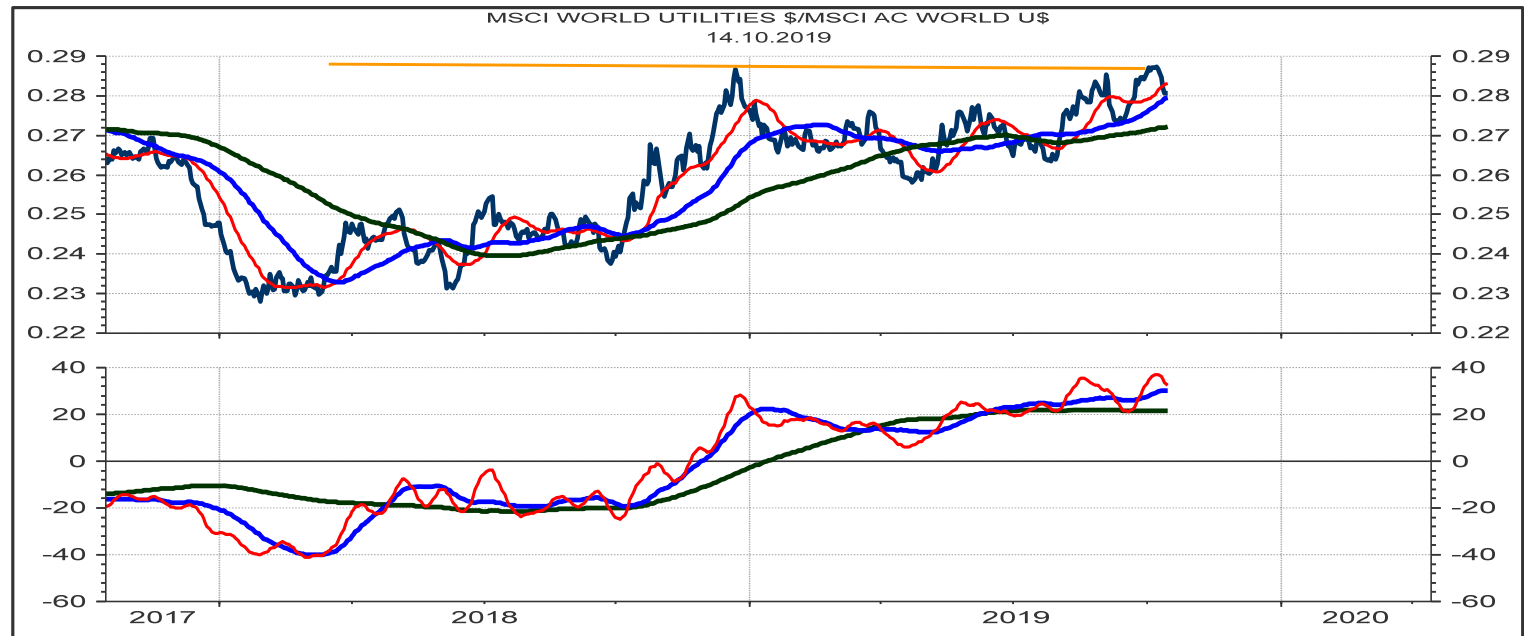
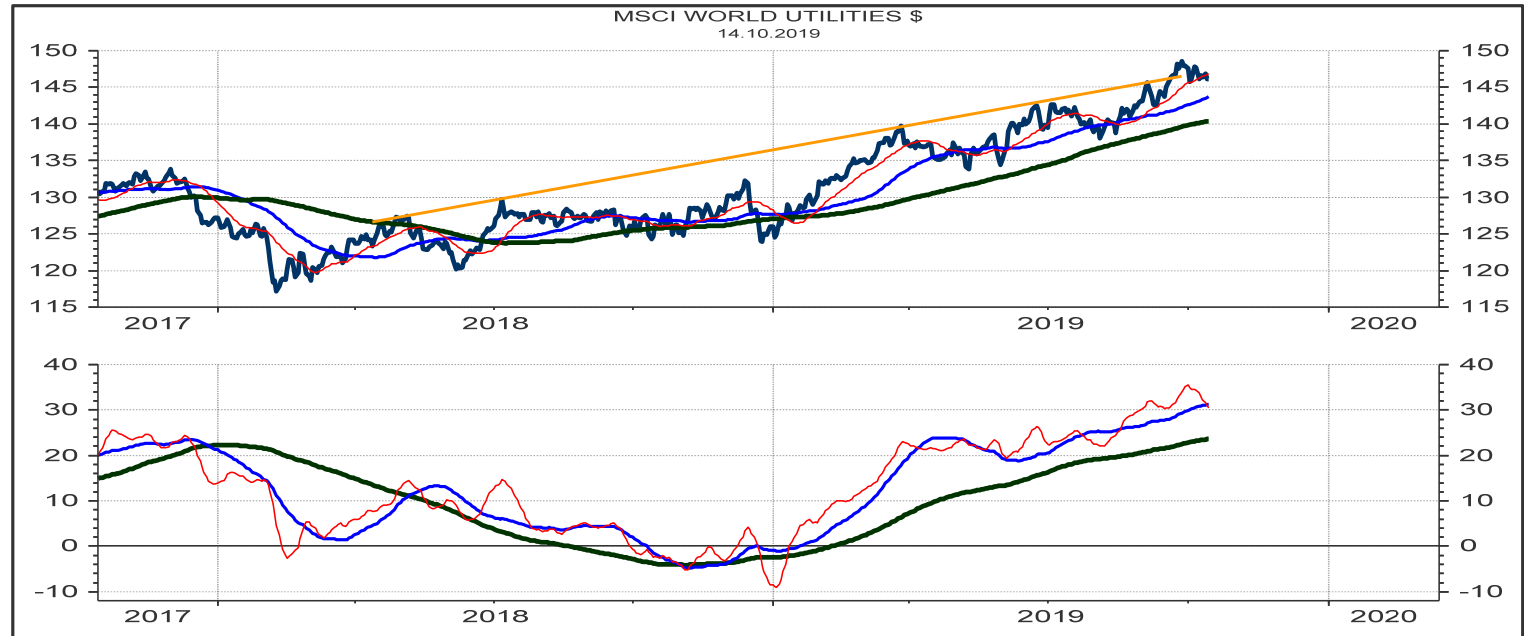


GLOBAL CHART OUTLOOK

15th October 2019
Global Equities

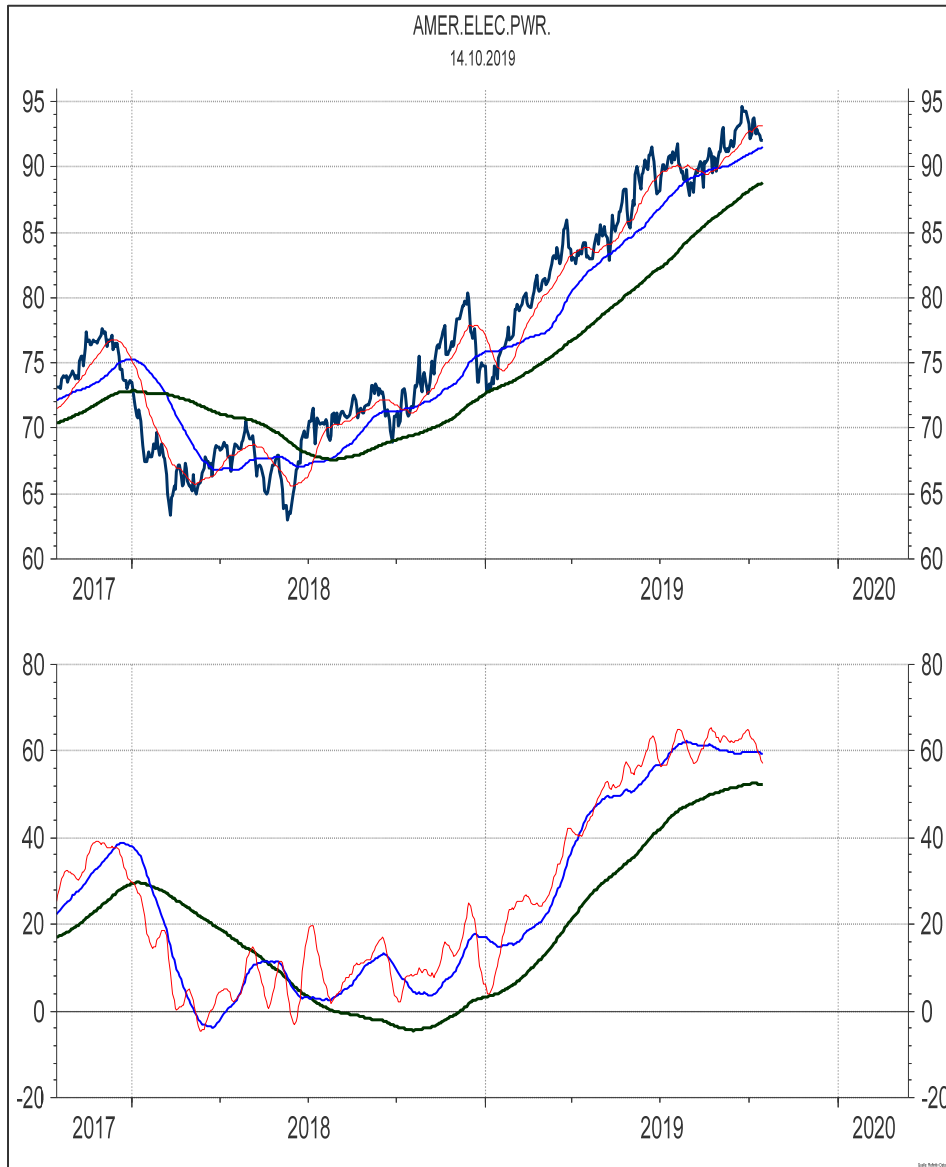
MSCI World Utilities absolute (top) and relative to the MSCI World Index (bottom)

The loss of relative performance to the World Index (bottom) implies that the absolute uptrend (top) in the utilities could be topping. The long-term and medium-term momentum indicators of the sector index and the two utility stocks on the next page, indicate that the utility uptrend could be exhausted. A break in the absolute index chart below 143 / 140 would trigger the expected downtrend signals. The chart below shows the US 10-year Yield. A break above 1.80% could signal a new upturn with resistance at 1.99%.



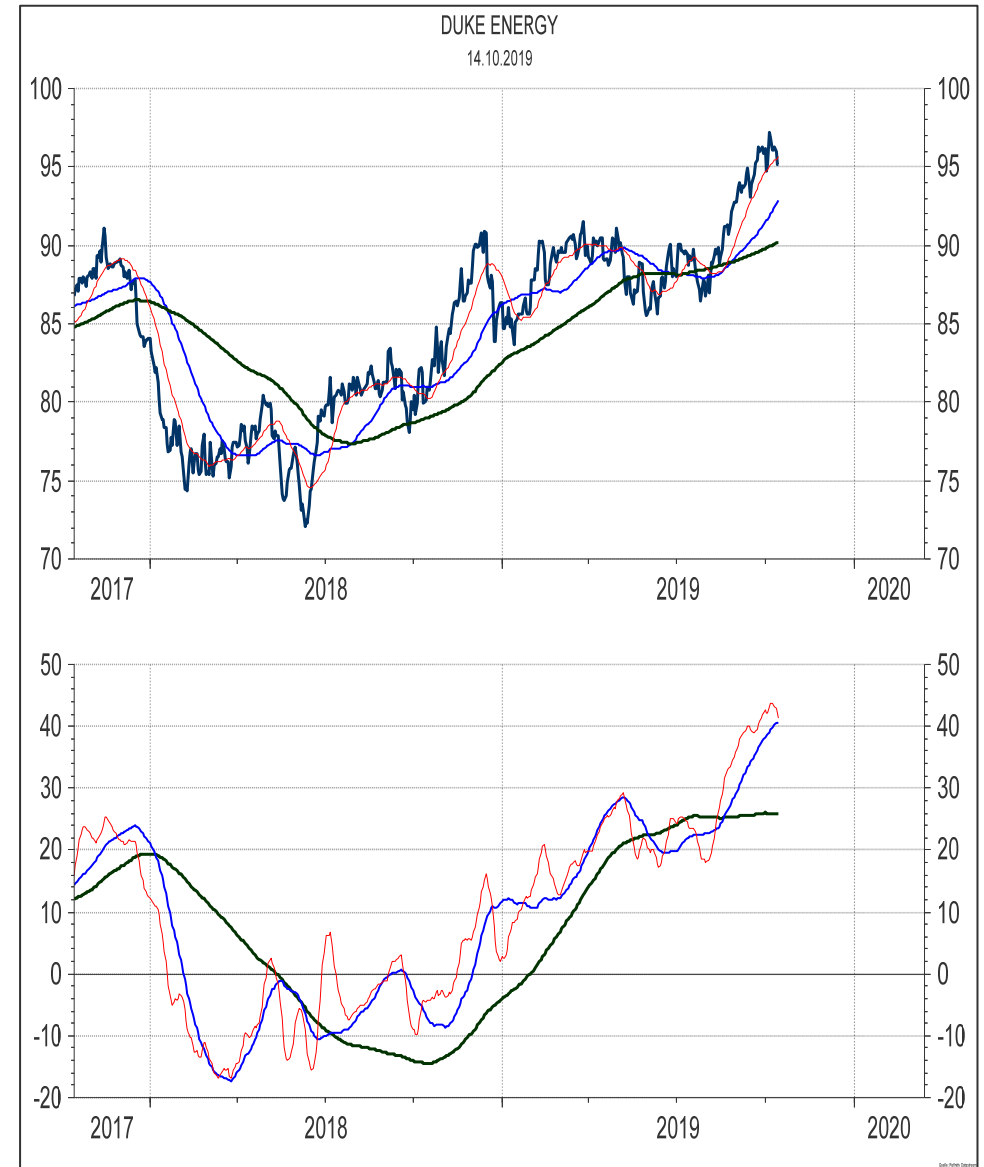
American Electric Power

The momentum indicators are topping.
A break of 90 / 88 is likely to be seen next.



Duke Energy

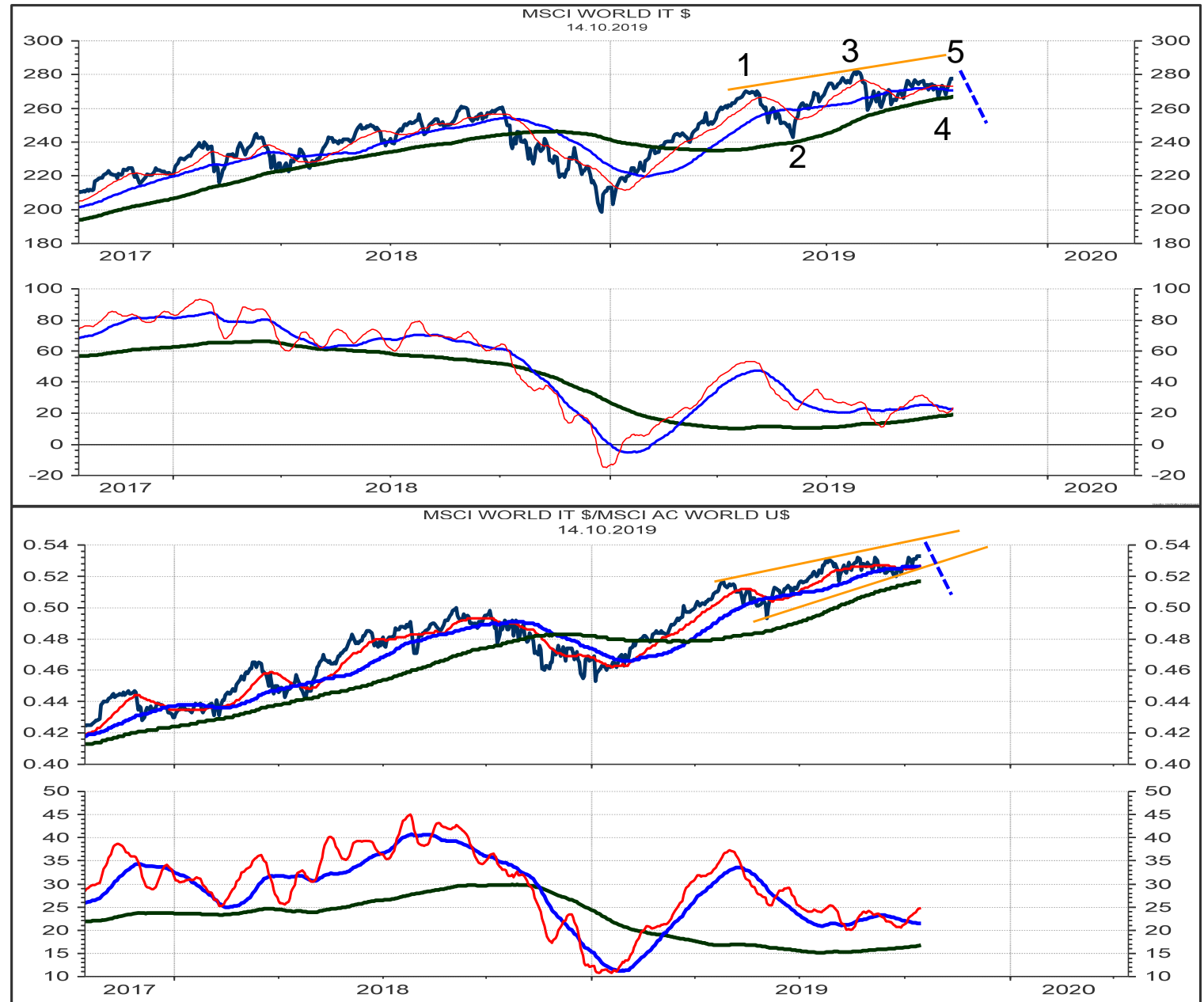
The momentum indicators re topping.
A break of 94 / 92 could be seen next.



MSCI World Information Technology absolute (top) and relative to the MSCI World Index (bottom)

It remains unclear if the uptrend in the World IT Index is topping or just consolidating. Possibly, the Index will register another new high to complete what could be labeled as a five-wave pattern. The bottom chart relative to the MSCI World Index has moved sideways and a final upleg to meet the upper (orange) resistance line is unfolding.

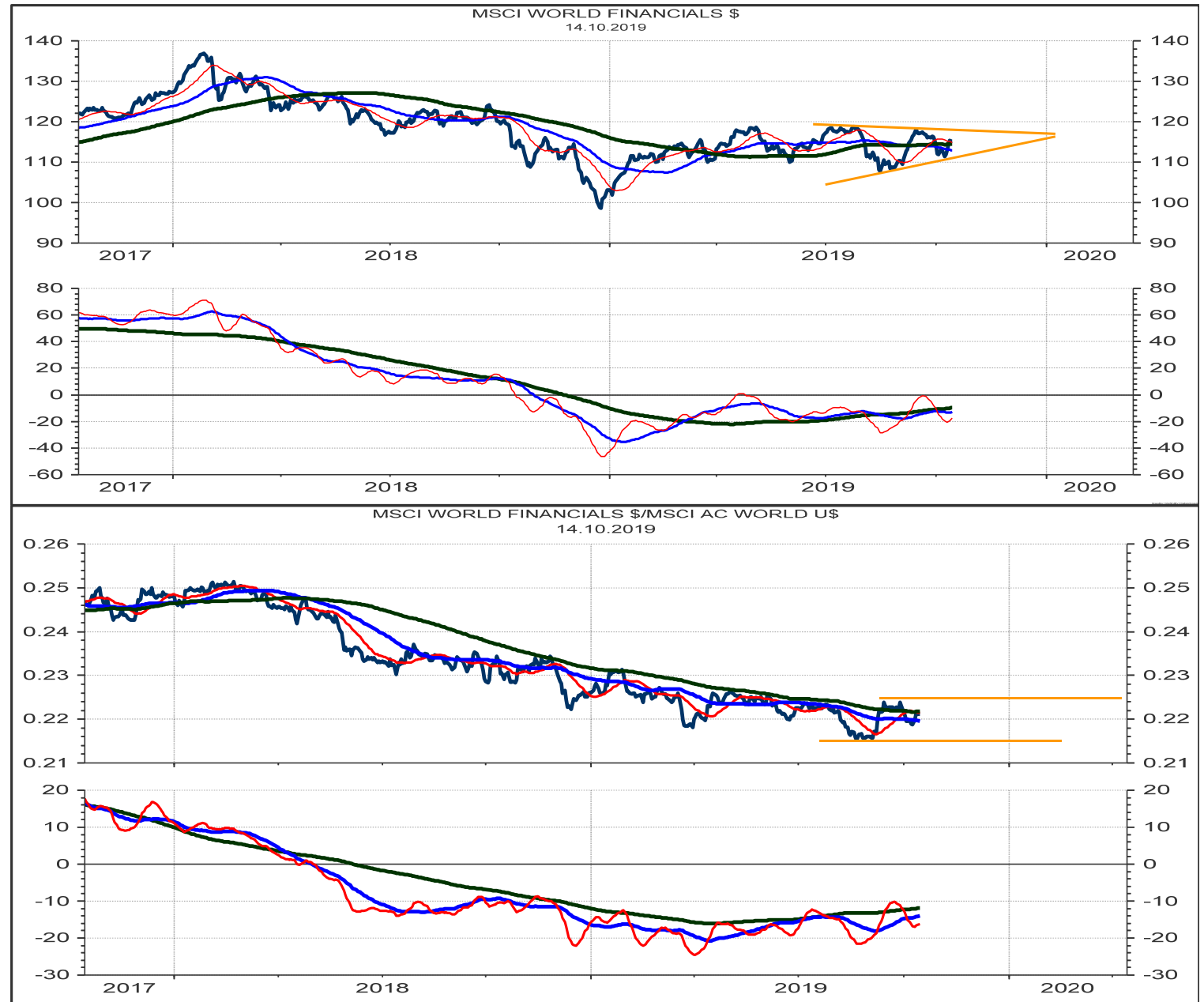
Clearly, a break of the absolute 144-day average would signal a major downturn in the IT sector.



MSCI World Financials absolute (top) and relative to the MSCI World Index (bottom)

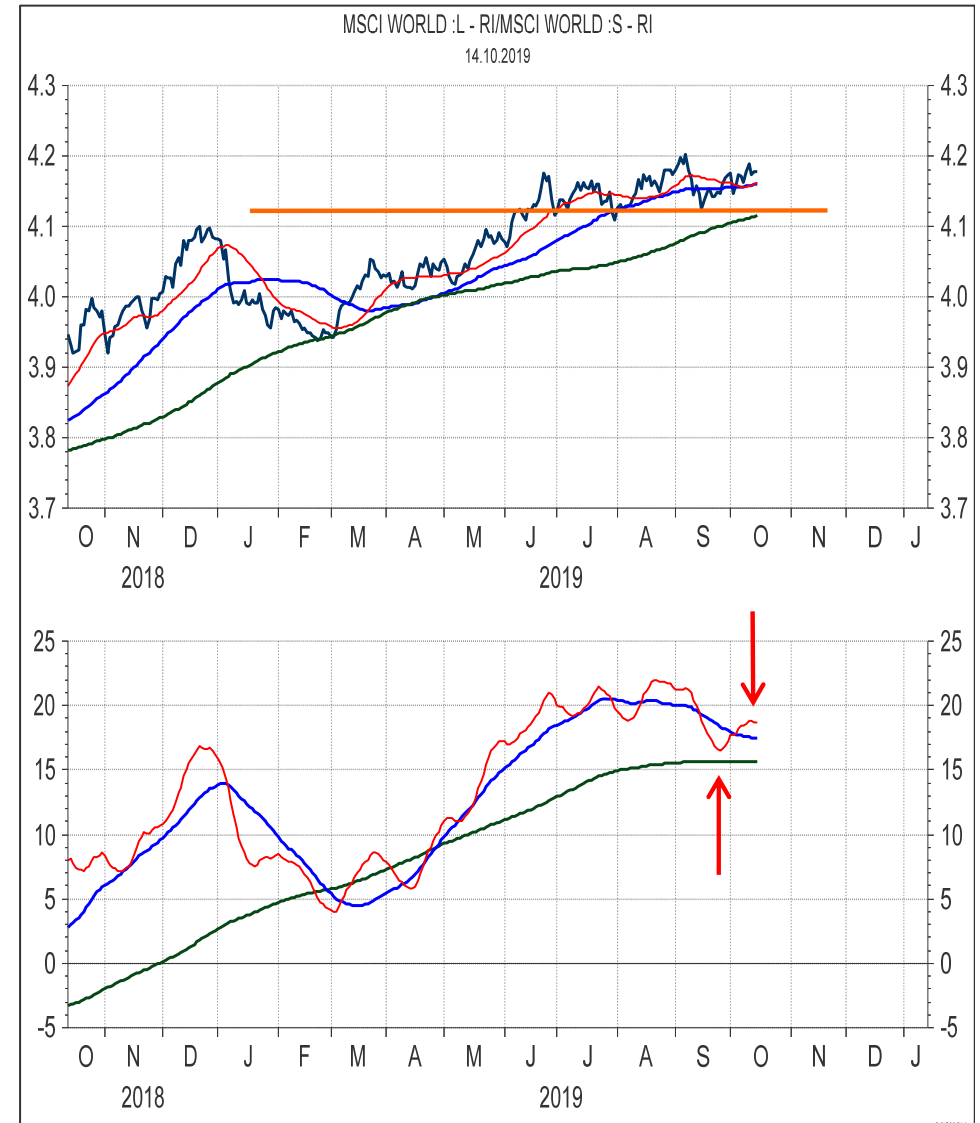
The financial sector takes is the focus of all sector indices. This is because it is highly interest rate sensitive. While a rise in the yield level could support the bank stocks, it could be rather negative for the overall stock market.

This is what the bottom chart is saying. The relative underperformance of the financial stocks could signal a new upturn to signal fresh outperformance relative to the World Index. A rise above the relative resistance at 0.224 would shift the light from yellow to green.



MSCI World Value relative to Growth (left) and Largecap relative to Smallcap (right)

The Short-term Momentum Indicator (red) of the Value Index is close to bottoming. The Short-term Momentum Indicator (red) of the LargeCap Index is topping. It will take for another 2-3 weeks to signal a possible major turn in the two indices. The Value Index will signal relative outperformance if 2.04 is broken. The support for the relative LargeCap Index is at 4.12. **The MEDIUM-TERM OUTLOOK remains NEUTRAL VALUE and NEUTRAL GROWTH and NEUTRAL LARGECAP AND NEUTRAL SMALLCAP.**



Swiss SPI 200 constituent stocks – listed according to the Score (range from 100% to 0%, 40%-60% is neutral)

Over the last week, the number of stocks with the maximum technical score of 100% has increased from 26 stocks to 41 stocks. The number of stocks with a total score of 0% has decreased from 23 stocks to 13 stocks. The Total Score of all 200 stocks has increased from 49% to 58%. These numbers signal a clear improvement and a POSITIVE technical market condition.

100%	SNB N	SNBN.S
100%	HYPO BK LENZB N	HBLN.S
100%	BELIMO HOLDING N	BEAN.S
100%	CHAM GROUP AG	CHAMA.S
100%	VALORA N	VALN.S
100%	O FUSSLIN N	OFN.S
100%	RIETER N	RIEN.S
100%	VETROPACK I	VET.S
100%	SWISSCOM N	SCMN.S
100%	BARRY CALLEBAUT	BARN.S
100%	GIVAUDAN N	GIVN.S
100%	KOMAX N	KOMN.S
100%	ZURICH INSURANCE	ZURN.S
100%	ADECCO N	ADEN.S
100%	CLARIANT N	CLN.S
100%	HELVETIA HLDG	HELN.S
100%	STRAUMANN HLD N	STMN.S
100%	VONTOBEL N	VONN.S
100%	TEMENOS N	TEMN.S
100%	AEVIS HOLDING SA	AEVS.S
100%	BCV N	BCVN.S
100%	EMS-CHEMIE N	EMS.N
100%	APG SGA	APGN.S
100%	YPSOMED HOLDING	YPSN.S
100%	PARGESA I	PARG.S
100%	IMPLENIA N	IMP.N
100%	GEBERIT N1	GEBN.S
100%	DAETWYL I	DAE.S
100%	JULIUS BAER N	BAER.S
100%	IVF HARTMANN	VBSN.S
100%	GLARNER KB N	GLKBN.S
100%	CEMBRA MONEY BAN	CMBN.S
100%	BOSSARD N	BOS.S
100%	CONZZETA HLDNG I	CONC.S
100%	SUNRISE N	SRCG.S
100%	INTERSHOP N	ISN.S
100%	ZEHNDER I	ZEHN.S
100%	MOBILEZONE HLD I	MOZN.S
100%	PLAZZA AG	PLANZ.S
100%	LANDIS GYR	LANDI.S
100%	SIKA	SIKA.S
94%	BASELLAND KTBK	BLKB.S
94%	GURIT I	GUR.S
94%	BVZ HOLDING AG	BVZN.S
94%	AIREIS SA	AIRE.S
94%	ROCHE HOLDING AG	ROG.S
94%	ARBONIA AG	ARBNO.S
94%	CALIDA HLD N	CALN.S
94%	BKW N	BKWB.S
94%	VARIA US PROP	VARN.S
94%	GALENICA	GALE.S
94%	LASTMINUTE ORD	LMN.S
89%	FISCHER N	FIN.S

89%	BUCHER N	BUCN.S
89%	ST GALLER KB N	SGKN.S
89%	VAUDOISE VERS N	VAHN.S
89%	SIG COMB GRP N	SIGNC.S
89%	ZUG ESTATE HLD	ZUGN.S
89%	SFS GROUP	SFSN.S
89%	MOLECULAR PARTNE	MOLN.S
89%	KUROS BIOSCIENCE	KURN.S
89%	SENSIRION N	SENSI.S
89%	NEWRON PHARMA N	NWRN.S
89%	LIECH LANDBK	LLBN.S
83%	WARTECK N	WARN.S
83%	SWISS PRIME SITE	SPSN.S
83%	ALLREAL HLD N	ALLN.S
83%	INFICON N	IFCN.S
83%	BALOISE HLD N	BALN.S
83%	BACHEM HOLD N	BANB.S
83%	SWISS LIFE HLDG	SLHN.S
83%	ALSO HLD AG	ALS.N
83%	HOCHDORF N	HOCN.S
83%	KUEHNE & NAGEL	KNIN.S
83%	LOGITECH	LOGN.S
83%	ORIOR N	ORON.S
78%	OC OERLIKON CORP	OERL.S
78%	BK LINTH LLB AG	LINN.S
78%	STADLER RAIL	SRIL.S
78%	BASLER KTBK PS	BSKP.S
78%	FEINTOOL N	FTON.S
78%	SCHWEITER I	SWTQ.S
78%	MOBIMO HLDG	MOBN.S
78%	BOBST GRP N	BOBNN.S
78%	EMMI N	EMMN.S
78%	PSP CH PRPTY N	PSPN.S
78%	MCH GROUP AG	MCHN.S
78%	ARYZTA AG	ARYN.S
78%	TITL BN BERG N	TIBN.S
78%	UBS GROUP N	UBSG.S
78%	VAT GROUP N	VACN.S
78%	INVESTIS N	IREN.S
78%	CEVA LOGISTICS	CEVAL.S
72%	ARUNDEL AG	ARONL.S
72%	PRIVATE EQUITY N	PEHN.S
72%	SONOVA H AG	SOON.S
67%	FORBO N	FORN.S
67%	CREALOGIX HLDG	CLXN.S
67%	CS GROUP AG	CSGN.S
67%	ASMALL WORLD N	ASWN.S
61%	PHOENIX I	PM.S
61%	SGS N	SGSN.S
61%	CICOR TECH	CICN.S
61%	LINDT & SP N	LISN.S
61%	DUFREY AG	DUFN.S
61%	SCHINDLER N	SCHN.S

61%	U-BLOX N	UBXN.S
61%	SULZER N	SUN.S
61%	MEYER BURGER N	MBTN.S
61%	POENINA	PNHO.S
56%	HIGHL EVNT & ENT	HLEE.S
56%	BASILEA PHARMA	BSLN.S
56%	LAFARGEHOLCIM	LHN.S
56%	JUNGFRAUBAHN N	JFN.S
56%	POLYPHOR N	POLN.S
56%	BELL FOOD GROUP	BELL.S
50%	GR KTBK PS	GRKP.S
50%	VON ROLL I	ROL.S
50%	SCHMOLZ+BICKENB	STLN.S
50%	SCHAFFNER N	SAHN.S
50%	SWISS RE N	SRENH.S
50%	BC GENEVE P	BCGE.S
44%	ZUGER KB I	ZG.S
44%	SCHLATTER N	STRN.S
44%	GAVAZZI CARLO I	GAV.S
44%	GRP MINOTERIES	GMI.S
44%	SIEGFRIED N	SFZN.S
44%	SCHINDLER PS	SCHP.S
44%	BLACKSTONE RES	BLS.S
39%	AMS	AMS.S
39%	PANALPINA WELT	PWTN.S
39%	SWISSQUOTE GRP N	SQN.S
39%	ASCOM N	ASCN.S
39%	CIE FIN TR I	CFT.S
39%	PARTNERS GROUPAG	PGHN.S
39%	IDORSIA N	IDIA.S
33%	CPH CHEM&PAPER	CPHN.S
33%	INTERROLL N	INRN.S
33%	ABB LTD N	ABBN.S
33%	BFW LIEGENSCH N	BLIN.S
33%	EDISUN POWER	ESUN.S
33%	BELLEVUE GRP N	BBN.S
33%	SWISS FIN&PROP	SFPN.S
33%	NESTLE SA	NESN.S
33%	RELIEF THERAPEUT	RLFB.S
33%	KARDEX I	KARN.S
33%	AUTONEUM N	AUTON.S
33%	WALLISER KTBK	WKB.S
33%	VIFOR PHARMA	VIFN.S
33%	VP BANK AG	VPBN.S
28%	CI COM SA I	CIE.S
28%	ELMA N	ELMN.S
28%	ADVAL TECH N	ADVN.S
28%	PERFECT HOLDING	PRFN.S
28%	SPICE PRIV AG	SPCE.S
28%	BB BIOTECH ORD	BBION.S
28%	HUBER & S N	HUBN.S
28%	WISEKEY N	WIHN.S
22%	SWATCH GROUP N	UHRN.S

22%	SWATCH GROUP I	UHR.S
22%	LONZA GRP AG N	LONN.S
22%	EFG INT N	EFGN.S
22%	METALL ZUG	METN.S
22%	PEACH PROP	PEAN.S
22%	LEONTEQ	LEON.S
22%	RICHEMONT N	CFR.S
22%	BURKHALTER AG	BRKN.S
22%	PERROT DUVAL I1	PEDU.S
22%	FLUGHAFEN ZURICH	FHZN.S
17%	STARRAG N	STGN.S
17%	ZWAHLEN & MAYR	ZWM.S
17%	TORNOS HOLDING N	TOHN.S
17%	DORMAKABA HOLD	DOKA.S
17%	NOVARTIS N	NOVN.S
17%	VALIANT N	VATN.S
17%	LEM HOLDING N	LEHN.S
17%	COLTENE N	CLTN.S
17%	BURCKHARDT	BCHN.S
17%	ROMANDE ENERGIE	HREN.S
17%	VZ HOLDING N	VZN.S
17%	LALIQUE	LLQ.S
17%	ZUR ROSE GROUP N	ROSEG.S
17%	GAM N	GAMH.S
17%	DKSH N	DKSH.S
17%	BQ CANT DU JURA	BCJ.S
11%	LINDT & SP PS	LISP.S
11%	TAMEDIA N	TAMN.S
11%	TECAN HLD N	TECN.S
11%	KUDELSKI	KUD.S
11%	SANTHERA PHARMA	SANN.S
11%	ORASCOM DEV H	ODHN.S
11%	MEIER TOBLER GRO	METG.S
11%	COMET HOLDING	COTNE.S
6%	HIAG IMMOBILIEN	HIAG.S
6%	ALCON N	ALCC.S
6%	OBSEVA SA/d	OBSV.O
6%	MEDACTA GROUP	MOVE.S
6%	COSMO PHARM N	COBN.S
0%	KTM INDUSTRIES/d	KTMI.VI
0%	VILLARS N	VILN.S
0%	MIKRON N	MIKN.S
0%	BERNER KB N	BEKN.S
0%	LUZERNER KB N	LUKN.S
0%	EVOLVA HOLD AG	EVE.S
0%	LECLANCHE N	LECN.S
0%	THURGAUER KB PS	TKBP.S
0%	ZUEBLIN N	ZUBN.S
0%	VALARTIS GROUP	VLRT.S
0%	MEDARTIS	MEDA.S
0%	KLINGELNBERG N	KLIN.S
0%	CASSIOPEA N	SKIN.S

Swiss Market Index 20 constituent stocks

SCORE	COMPANY	RIC	PRICE	LT	MT	ST	COMMENT	DATE BOUGHT	PRICE BOUGHT	PROFIT or LOSS
33%	ABB LTD N	ABBN.S	18.55	O	uO	uO	see chart			
100%	ADECCO N	ADEN.S	55.72	u+	+	uu+				
6%	ALCON N	ALCC.S	56.90	na	-	uO	see chart			
67%	CS GROUP AG	CSGN.S	12.02	u+	uu+	uu+	see chart			
100%	GEBERIT N1	GEBN.S	473.30	+	+	uu+				
100%	GIVAUDAN N	GIVN.S	2'855.00	+	+	+	Next resistance is 2890, 2950/90 and 3150.	11.09.2019	2782.00	2.62%
56%	LAFARGEHOLCIM	LHN.S	47.50	O	uu+	uu+	Must rise above 48.50 to signal 50.50 or 54.			
22%	LONZA GRP AG N	LONN.S	335.20	O	-	uu+	Entered a medium-term correction. Supports are 318 and 297.			
33%	NESTLE SA	NESN.S	106.22	+	d-	dd-	see chart			
17%	NOVARTIS N	NOVN.S	86.14	-	-	+	see chart	24.05.2019	85.55	0.69%
22%	RICHEMONT N	CFR.S	72.62	O	-	uu+	Support is at 67.50 or 58.50.			
94%	ROCHE HOLDING AG	ROG.S	289.85	+	+	+	see chart	24.05.2019	272.10	6.52%
61%	SGS N	SGSN.S	2'450.00	uO	u+	uu+				
100%	SIKA	SIKA.S	157.35	+	+	+	Must rise above 160 to signal 170 or 184/187. Looking for a correction at 160.			
83%	SWISS LIFE HLDG	SLHN.S	481.30	uu+	uu+	uu+	Triple upgrade must be confirmed by a rise >490. Major sell signal if 457 is broken.			
50%	SWISS RE N	SRENH.S	102.10	+	do	dd-	Forming a Head and Shoulder Top. Sell signal if 101 is broken. Supports 98.50, 97.			
100%	SWISSCOM N	SCMN.S	504.20	+	+	+				
22%	SWATCH GROUP I	UHR.S	261.10	O	-	u+				
78%	UBS GROUP N	UBSG.S	11.10	uO	u+	uu+	BUY only if 11.25 is broken. ADD if 11.60 is cleared. Targets are 12.20 or 13.30.			
100%	ZURICH INSURANCE	ZURN.S	387.60	+	+	+	Likely to rise to 410 or 440.	10.09.2019	374.00	3.64%

Swiss Performance Index 200 stocks – listed alphabetically (A-Co)

SCORE	COMPANY	RIC	PRICE	LT	MT	ST	COMMENT	DATE BOUGHT	PRICE BOUGHT	PROFIT or LOSS
33%	ABB LTD N	ABB.N.S	18.55	o	uo	uo	see chart			
100%	ADECCO N	ADEN.S	55.72	u+	+	uu+				
28%	ADVAL TECH N	ADV.N.S	165.00	o	o	-				
100%	AEVIS HOLDING SA	AEVS.S	12.75	u+	uu+	uu+				
94%	AIRESES SA	AIRE.S	1.27	+	+	u+				
6%	ALCON N	ALCC.S	56.90	na	-	uo	see chart			
83%	ALLREAL HLD N	ALLN.S	192.00	+	+	u+				
83%	ALSO HLD AG	ALSN.S	144.00	+	uu+	u+				
39%	AMS	AMS.S	43.86	+	d-	uo				
100%	APG SGA	APGN.S	270.50	+	uu+	uu+	Must hold above 259 or a sell signal will be triggered.	11.09.2019	273.20	-0.99%
94%	ARBONIA AG	ARBNO.S	11.92	+	+	do				
72%	ARUNDEL AG	ARONL.S	2.10	+	+	-				
78%	ARYZTA AG	ARYN.S	0.82	o	u+	uu+				
39%	ASCOM N	ASCN.S	10.20	-	uu+	uo				
67%	ASMALLWORLD N	ASWN.S	2.90	+	+	-				
33%	AUTONEUM N	AUTON.S	104.00	uo	o	uo				
83%	BACHEM HOLD N	BANB.S	145.00	+	u+	u+	Sell the position if 135 is broken. Lower support is 132, 129.50 or 124.	20.08.2019	134.60	7.73%
83%	BALOISE HLD N	BALN.S	180.50	+	+	+				
100%	BARRY CALLEBAUT	BARN.S	2'094.00	+	+	+				
94%	BASELLAND KTBK	BLKB.S	916.00	uu+	u+	uu+				
56%	BASILEA PHARMA	BSLN.S	42.62	+	do	do				
78%	BASLER KTBK PS	BSKP.S	71.00	uo	+	+				
28%	BB BIOTECH ORD	BION.S	61.65	-	uo	uu+				
50%	BC GENEVE P	BCGE.S	197.00	-	uu+	uu+				
100%	BCV N	BCVN.S	785.00	+	+	+	Long-term resistance range is 790 / 805.			
100%	BELIMO HOLDING N	BEAN.S	6'170.00	+	+	+	Next resistance is 6250 and 6500. Waiting for a pullback.			
56%	BELL FOOD GROUP	BELL.S	263.00	-	+	do				
33%	BELLEVUE GRP N	BBN.S	21.80	+	dd-	d-				
0%	BERNER KB N	BEKN.S	216.00	-	dd-	dd-				
33%	BFW LIEGENSCH N	BLIN.S	43.40	+	-	d-				
78%	BK LINTH LLB AG	LINN.S	476.00	o	+	do				
94%	BKW N	BKWB.S	73.70	+	+	+	Waiting for the end of the consolidation between 71 and 76.			
44%	BLACKSTONE RES	BLS.S	1.06	o	o	uu+				
78%	BOBST GRP N	BOBNN.S	50.65	o	+	u+	Must rise above 153 to signal a turnaround with new resistance at 165/170 or 188/200.			
100%	BOSSARD N	BOS.S	145.70	u+	u+	u+				
17%	BQ CANT DU JURA	BCJ.S	55.50	o	-	uo				
89%	BUCHER N	BUCN.S	313.20	u+	+	uu+	ADD to the position if 323 is broken. Next targets are 330, 342 or 368.	10.09.2019	312.20	0.32%
17%	BURCKHARDT	BCHN.S	231.50	-	o	-				
22%	BURKHALTER AG	BRKN.S	72.50	o	d-	+	Bouncing off the long-term support at 69. Resistance is 75 and 77.50.			
94%	BVZ HOLDING AG	BVZN.S	1'140.00	+	+	+				
94%	CALIDA HLD N	CALN.S	30.50	+	+	+				
0%	CASSIOPEA N	SKIN.S	38.50	-	-	d-				
100%	CEMBRA MONEY BAN	CMBN.S	106.00	+	+	+	Likely to enter a correction from resistance between 105 and 107.			
78%	CEVA LOGISTICS	CEVAL.S	29.00	do	+	+				
100%	CHAM GROUP AG	CHAMA.S	430.00	u+	uu+	+	BUY if the resistance range 439 / 442 is broken. Could resume the long-term uptrend.			
28%	CI COM SA I	CIE.S	2.32	o	do	d-				
61%	CICOR TECH	CICN.S	48.10	o	+	-				
39%	CIE FIN TR I	CFT.S	102.00	uo	uo	-				
100%	CLARIANT N	CLN.S	20.74	+	+	+	BUY if the resistance at 21.50 is broken. Could rise to 23 or 24.50 / 25.50.			
17%	COLTENE N	CLTN.S	76.50	-	o	-				
11%	COMET HOLDING	COTNE.S	82.00	o	d-	-				
100%	CONZZETA HLDNG I	CONC.S	858.00	+	+	+	BUY if the resistance at 875 is broken. Must rise above 910 to signal 980 or 1080.			
6%	COSMO PHARM N	COPN.S	76.00	-	-	uo	BUY if 79.10 is broken. Registered a minor selling climax. Could rise to 85 or 90/98.			

SPI Index 200 constituent stocks - alphabetically (Co-La)

SCORE	COMPANY	RIC	PRICE	LT	MT	ST	COMMENT	DATE BOUGHT	PRICE BOUGHT	PROFIT or LOSS
33%	CPH CHEM&PAPER	CPHN.S	80.60	-	uo	uu+				
67%	CREALOGIX HLDG	CLXN.S	95.00	o	u+	uo	Must rise above 98 to signal 101, 106 or 114.			
67%	CS GROUP AG	CSGN.S	12.02	u+	uu+	uu+	see chart			
100%	DAETWYL I	DAE.S	164.00	+	+	uu+	ADD to the position if 167 is broken. Next targets are 172, 183/187 or 200.	11.09.2019	165.50	-0.91%
17%	DKSH N	DKSH.S	47.30	-	do	dd-				
17%	DORMAKABA HOLD	DOKA.S	641.50	-	-	+				
61%	DUFY AG	DUFN.S	83.44	o	uu+	u+	BUY if 84.40 is broken. ADD if 86 is broken. Targets are 91 or 99.			
33%	EDISUN POWER	ESUN.S	137.00	+	d-	-				
22%	EFG INT N	EFGN.S	5.95	uo	-	uu+				
28%	ELMA N	ELMN.S	416.00	do	do	dd-				
78%	EMMI N	EMMN.S	819.50	uo	u+	uu+				
100%	EMS-CHEMIE N	EMSN.S	627.50	+	+	+				
0%	EVOLVA HOLD AG	EVE.S	0.16	-	d-	dd-				
78%	FEINTOOL N	FTON.S	58.30	uo	+	+	Must rise above 62.50 to signal 67.50 or 75.			
89%	FISCHER N	FIN.S	887.00	u+	+	uu+	BUY signal to be triggered if 915/920 is broken. Resistance is 940, 980, 1045.			
22%	FLUGHAFEN ZURICH	FHZN.S	180.00	+	dd-	dd-	Has been forming a horizontal triangle. Support is 174.			
67%	FORBO N	FORN.S	1'475.00	-	u+	uu+				
94%	GALENICA	GALE.S	57.40	+	+	+	Long-term resistance is at 57.80 / 59.50, a break of which would signal 62, 64 or 70.			
17%	GAM N	GAMH.S	3.54	o	-	uo				
44%	GAVAZZI CARLO I	GAV.S	259.00	o	uo	+				
100%	GEBERIT N1	GEBN.S	473.30	+	+	uu+				
100%	GIVAUDAN N	GIVN.S	2'855.00	+	+	+	Next resistance is 2890, 2950/90 and 3150.	11.09.2019	2782.00	2.62%
100%	GLARNER KB N	GLKBN.S	31.50	+	+	+				
50%	GR KTBK PS	GRKP.S	1'460.00	+	do	dd-				
44%	GRP MINOTERIES	GMI.S	360.00	-	u+	uu+				
94%	GURIT I	GUR.S	1'348.00	+	+	+	Reached a short-term resistance at 1410. Watching for a pullback.			
100%	HELVETIA HLDG	HELN.S	139.90	+	+	+	Hold.	08.10.2019	137.10	2.04%
6%	HIAG IMMOBILIEN	HIAG.S	112.00	-	-	do				
56%	HIGHL EVNT & ENT	HLEE.S	19.60	do	u+	-				
83%	HOCHDORF N	HOCN.S	80.70	u+	+	+				
28%	HUBER & S N	HUBN.S	64.00	-	uo	uu+				
100%	HYPO BK LENZB N	HBLN.S	4'520.00	+	+	+				
39%	IDORSIA N	IDIA.S	24.30	+	d-	uo				
100%	IMPLENIA N	IMPN.S	39.50	+	+	+	Hold.	29.08.2019	32.10	23.05%
83%	INFICON N	IFCN.S	652.00	+	+	+	Hold.	10.09.2019	645.40	1.02%
33%	INTERROLL N	INRN.S	1'808.00	-	uo	+				
100%	INTERSHOP N	ISN.S	554.00	+	+	+	A break of 560/565 would signal 580/590 or 620/40 or 700/730.			
78%	INVESTIS N	IREN.S	73.20	+	+	+				
100%	IVF HARTMANN	VBSN.S	161.00	+	+	+				
100%	JULIUS BAER N	BAER.S	43.86	+	+	uu+	Add to the position if 44.80 is broken. Resistance is 46.80 or 50. Sell <41.70.	10.09.2019	43.30	1.29%
56%	JUNGFRAUBAHN N	JFN.S	154.40	+	do	do				
33%	KARDEX I	KARN.S	136.80	-	uo	uu+	Trading range with resistance at 141 and 146.			
0%	KLINGELNBERG N	KLIN.S	26.80	-	-	-				
100%	KOMAX N	KOMN.S	204.60	+	+	+	ADD to the position if 215 is broken. Supports are 202 and 197.	10.09.2019	204.40	0.10%
0%	KTM INDUSTRIES/d	KTMI.VI	45.20	-	-	-				
11%	KUDELSKI	KUD.S	5.58	o	-	-				
83%	KUEHNE & NAGEL	KNIN.S	148.50	+	+	+				
89%	KUROS BIOSCIENCE	KURN.S	2.65	+	+	do				
56%	LAFARGEHOLCIM	LHN.S	47.50	o	uu+	uu+	Must rise above 48.50 to signal 50.50 or 54.			
17%	LALIQUE	LLQ.S	37.60	-	do	dd-				
100%	LANDIS GYR	LANDI.S	93.00	+	+	+				
94%	LASTMINUTE ORD	LMN.S	38.30	+	+	+				
0%	LECLANCHE N	LECN.S	1.33	-	-	-				

SPI Index 200 constituent stocks - alphabetically (La-Se)

SCORE	COMPANY	RIC	PRICE	LT	MT	ST	COMMENT	DATE BOUGHT	PRICE BOUGHT	PROFIT or LOSS
17%	LEM HOLDING N	LEHN.S	1'166.00	o	-	o				
22%	LEONTEQ	LEON.S	30.80	-	uo	uo				
89%	LIECH LANDBK	LLBN.S	64.60	u+	+	+				
61%	LINDT & SP N	LISN.S	81'400.00	+	+	do				
11%	LINDT & SP PS	LISP.S	7'245.00	do	-	-				
83%	LOGITECH	LOGN.S	40.79	+	+	+				
22%	LONZA GRP AG N	LONN.S	335.20	o	-	uu+	Entered a medium-term correction. Supports are 318 and 297.			
0%	LUZERNER KB N	LUKN.S	408.50	-	-	-				
78%	MCH GROUP AG	MCHN.S	23.20	+	o	uo				
6%	MEDACTA GROUP	MOVE.S	81.60	-	d-	o				
0%	MEDARTIS	MEDA.S	39.65	-	-	dd-				
11%	MEIER TOBLER GRO	METG.S	14.20	o	-	-				
22%	METALL ZUG	METN.S	1'985.00	-	o	uo				
61%	MEYER BURGER N	MBTN.S	0.40	o	+	-				
0%	MIKRON N	MIKN.S	7.10	-	-	d-	Long-term support is at 6.65.			
100%	MOBILEZONE HLD I	MOZN.S	10.20	+	+	+	Must rise above 10.50 and 11.10 to signal a turnaround with targets at 12.40 or 14.50.			
78%	MOBIMO HLDG	MOBN.S	283.00	+	+	+	Likely to rise to long-term resistance at 297.			
89%	MOLECULAR PARTNE	MOLN.S	17.28	+	+	do				
33%	NESTLE SA	NESN.S	106.22	+	d-	dd-	see chart			
89%	NEWRON PHARMA N	NWRN.S	6.01	uu+	+	+				
17%	NOVARTIS N	NOVN.S	86.14	-	-	+	see chart	24.05.2019	85.55	0.69%
100%	O FUESSLI N	OFN.S	92.50	u+	u+	uu+				
6%	OBSEVA SA/d	OBSV.O	7.66	-	-	uo				
78%	OC OERLIKON CORP	OERL.S	9.89	uo	uu+	uu+				
11%	ORASCOM DEV H	ODHN.S	14.74	o	-	-	Remains in the Triangle from 2018. Supports are 14, 13.70, 13.30, 12.60, 12.10, 10.80.			
83%	ORIOR N	ORON.S	84.80	+	+	+				
39%	PANALPINA WELT	PWTN.S	221.20	u+	-	u+				
100%	PARGESA I	PARG.S	76.95	+	+	uu+	Must rise above 78 to signal 84.50 or 95.			
39%	PARTNERS GROUPAG	PGHN.S	763.80	u+	-	u+	Major sell signal to be triggered if the support range 740 / 725 is broken.			
22%	PEACH PROP	PEAN.S	32.20	u+	-	-	Sell the position if 31.30 is broken.	27.06.2019	34.10	-5.57%
28%	PERFECT HOLDING	PRFN.S	0.02	do	do	dd-				
22%	PERROT DUVAL I1	PEDU.S	122.00	+	-	-				
61%	PHOENIX I	PM.S	397.50	uo	uu+	+				
100%	PLAZZA AG	PLANZ.S	256.00	+	+	+				
61%	POENINA	PNHO.S	45.00	o	+	-	Must rise above 46.50 / 48 to signal a major turnaround.			
56%	POLYPHOR N	POLN.S	6.23	uo	+	uu+	BUY signal to be triggered if 6.80 and 7.60 is broken. Target 8 or 9 / 9.60.			
72%	PRIVATE EQUITY N	PEHN.S	58.50	o	+	u+				
78%	PSP CH PRPTY N	PSPN.S	129.40	+	+	+				
33%	RELIEF THERAPEUT	RLFB.S	0.0014	-	o	u+				
22%	RICHEMONT N	CFR.S	72.62	o	-	uu+	Support is at 67.50 or 58.50.			
100%	RIETER N	RIEN.S	146.50	+	+	uu+	BUY only if the resistance cluster 148 / 153 is broken. Targets are 162, 174 or 185.			
94%	ROCHE HOLDING AG	ROG.S	289.85	+	+	+	see chart	24.05.2019	272.10	6.52%
17%	ROMANDE ENERGIE	HREN.S	1'200.00	o	-	o				
11%	SANTHERA PHARMA	SANN.S	12.12	o	-	d-				
50%	SCHAFFNER N	SAHN.S	203.00	-	+	d-	Must rise above 216 / 223 to signal 238, 247 or 265.			
61%	SCHINDLER N	SCHN.S	221.40	+	o	+				
44%	SCHINDLER PS	SCHP.S	222.40	+	-	u+				
44%	SCHLATTER N	STRN.S	38.40	o	uo	uu+				
50%	SCHMOLZ+BICKENB	STLN.S	0.24	-	u+	+				
78%	SCHWEITER I	SWTQ.S	945.00	+	+	do				
89%	SENSIRION N	SENSI.S	41.50	+	+	o	Hold.	27.08.2019	37.50	10.67%
89%	SFS GROUP	SFSN.S	80.70	uu+	+	u+	Must rise above 84 to signal a turnaround with targets at 89, 97 / 102.			
61%	SGS N	SGSN.S	2'450.00	uo	u+	uu+				

SPI Index 200 constituent stocks - alphabetically (Sf-Z)

SCORE	COMPANY	RIC	PRICE	LT	MT	ST	COMMENT	DATE BOUGHT	PRICE BOUGHT	PROFIT or LOSS
44%	SIEGFRIED N	SFZN.S	385.50	+	dd-	uu+	TOOK PROFIT of 9%. Supports are 385, 372, 367.			
89%	SIG COMB GRP N	SIGNC.S	13.72	+	+	+	Next target is 14.10.	24.07.2019	11.20	22.50%
100%	SIKA	SIKA.S	157.35	+	+	+	Must rise above 160 to signal 170 or 184/187. Looking for a correction at 160.			
100%	SNB N	SNBN.S	5'640.00	+	+	uu+	Must rise above 5900 to signal 6050, 6300 or 6800/7000, 8000 or 10000.			
72%	SONOVA H AG	SOON.S	228.40	+	+	do	Buy only if 233 is broken. Add to position if 237.50 is broken. Target 244 or 255.			
28%	SPICE PRIV AG	SPCE.S	21.60	o	uo	d-				
89%	ST GALLER KB N	SGKN.S	435.50	uo	u+	uu+				
78%	STADLER RAIL	SRAIL.S	46.26	na	+	+	see chart	20.09.2019	45.25	2.23%
17%	STARRAG N	STGN.S	46.80	o	-	uo				
100%	STRAUMANN HLD N	STMN.S	858.80	+	+	+	Broke 845 and signaled 865 / 880, a break of which will signal 910 / 935.	14.10.2019	846.00	1.51%
61%	SULZER N	SUN.S	97.00	o	u+	uu+	Must rise above 101.50 to signal 107 / 111 or 118 or 125.			
100%	SUNRISE N	SRCG.S	80.25	+	+	uu+	ADD to the position if 82 is broken. Resistance is 83, 85, 91.	20.08.2019	78.25	2.56%
22%	SWATCH GROUP I	UHR.S	261.10	o	-	u+				
22%	SWATCH GROUP N	UHRN.S	49.14	o	-	u+				
33%	SWISS FIN&PROP	SFPN.S	94.00	+	-	-				
83%	SWISS LIFE HLDG	SLHN.S	481.30	uu+	uu+	uu+	Triple upgrade must be confirmed by a rise >490. Major sell signal if 457 is broken.			
83%	SWISS PRIME SITE	SPSN.S	99.90	+	+	+	TOOK PROFIT of 16%.			
50%	SWISS RE N	SRENH.S	102.10	+	do	dd-	Forming a Head and Shoulder Top. Sell signal if 101 is broken. Supports 98.50, 97.			
100%	SWISSCOM N	SCMN.S	504.20	+	+	+				
39%	SWISSQUOTE GRP N	SQN.S	41.40	+	d-	uo				
11%	TAMEDIA N	TAMN.S	95.50	o	-	d-				
11%	TECAN HLD N	TECN.S	229.60	o	-	-				
100%	TEMENOS N	TEMN.S	172.15	uu+	uu+	uu+	BUY if the resistances at 176 and 178 are broken. Targets are 185 or 203.			
0%	THURGAUER KB PS	TKBP.S	107.50	dd-	dd-	dd-				
78%	TITL BN BERG N	TIBN.S	345.00	+	+	o				
17%	TORNOS HOLDING N	TOHN.S	6.96	o	-	uo				
61%	U-BLOX N	UBXN.S	74.45	o	u+	uu+	BUY signal to be triggered if 76.50/77 is broken. ADD to position >81. Support is 68.			
78%	UBS GROUP N	UBSG.S	11.10	uo	u+	uu+	BUY only if 11.25 is broken. ADD if 11.60 is cleared. Targets are 12.20 or 13.30.			
0%	VALARTIS GROUP	VLRT.S	10.00	-	-	-				
17%	VALIANT N	VATN.S	99.40	-	-	u+				
100%	VALORA N	VALN.S	285.50	+	+	+				
94%	VARIA US PROP	VARN.S	37.70	+	+	+				
78%	VAT GROUP N	VACN.S	127.85	+	+	uu+				
89%	VAUDOISE VERS N	VAHN.S	546.00	+	+	do	Buy only if the long-term resistance at 555 is broken. Target 580 or 610 / 630.			
100%	VETROPACK I	VET.S	2'620.00	+	+	+	Hold.	29.08.2019	2485.00	5.43%
33%	VIFOR PHARMA	VIFN.S	156.75	+	dd-	dd-	TAKE PROFIT of 9.5%. The uptrend from December is topping.	11.06.2019	143.10	9.54%
0%	VILLARS N	VILN.S	740.00	-	-	-				
50%	VON ROLL I	ROL.S	0.91	-	u+	uu+				
100%	VONTOBEL N	VONN.S	55.65	uu+	uu+	uu+	BUY only if 57.50 is broken. Traget is 61.50 or 68.50.			
33%	VP BANK AG	VPBN.S	156.20	+	-	+	BUY only if 159 is broken. Next resistance is 164 and 174.			
17%	VZ HOLDING N	VZN.S	275.50	-	o	-				
33%	WALLISER KTBK	WKB.S	115.00	-	do	+				
83%	WARTECK N	WARN.S	2'020.00	+	+	+				
28%	WISEKEY N	WIHN.S	2.45	o	o	-				
100%	YPSOMED HOLDING	YPSN.S	142.60	+	+	+	ADD to the position if 145 and 147 is broken. Targets are 153 and 164 / 170.	11.10.2019	139.50	2.22%
100%	ZEHNDER I	ZEHN.S	42.10	+	+	+	Must rise above 45 to signal 47, 50, 52 or 61.			
0%	ZUEBLIN N	ZUBN.S	25.60	d-	-	-				
89%	ZUG ESTATE HLD	ZUGN.S	2'020.00	+	+	do				
44%	ZUGER KB I	ZG.S	6'100.00	uo	uo	+				
17%	ZUR ROSE GROUP N	ROSEG.S	86.70	o	-	uo	Must rise above 88 to signal 90.50 or 93.50 or 99.			
100%	ZURICH INSURANCE	ZURN.S	387.60	+	+	+	Likely to rise to 410 or 440.	10.09.2019	374.00	3.64%
17%	ZWAHLEN & MAYR	ZWM.S	250.00	-	uo	-				

ABB – daily chart

Last week I stated: „Two Fibonacci support levels are clustered at 17.50, a break of which would signal a decline to 16 or 12.50.“
ABB is bouncing off the support, which I had located at 17.50.
No new recommendation at this point.

ABB LTD N



ALCON – hourly chart

Last week I stated that „three Fibonacci supports are clustered at 55. A rebound could start from this level.“

Alcon entered the rebound just above 55.

I would BUY if 57.20 / 57.60 is broken. I would ADD to the position if 58.80 and 59.20 is broken.

The new upleg from 55 could be labeled Wave C of a Horizontal Triangle, which began at the low in April 2019.

Obviously, a bullish outlook would be negated if 55 / 54.50 is broken.

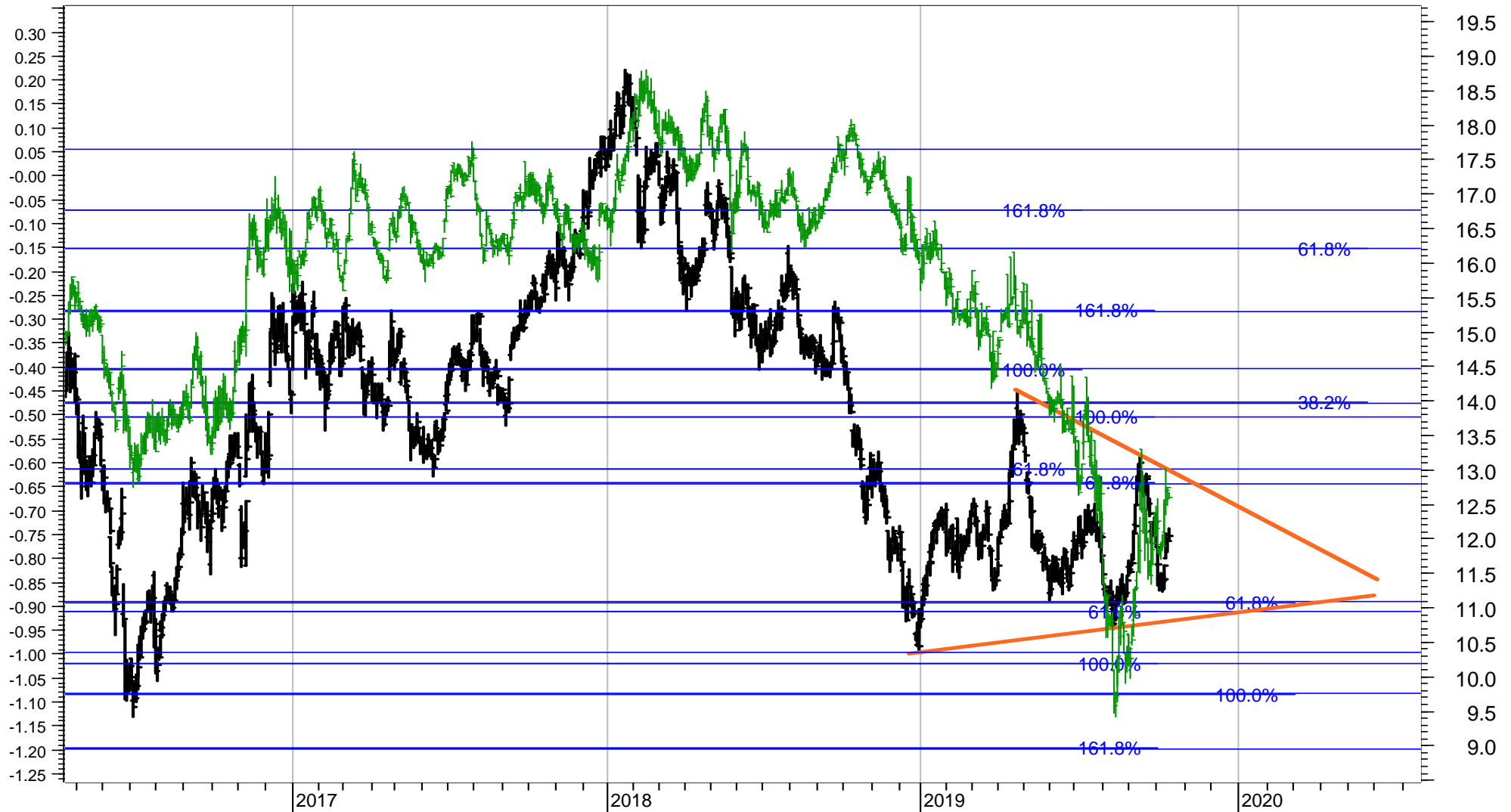


CS GROUP and Swiss 10-year Bond Yield (green) – daily chart

It is not entirely clear if this year's Triangle is a base-formation or a trend-continuation pattern.

Much depends on the interest rate outlook. If the Swiss 10-year Yield breaks above $-0.45 / -0.40\%$ I will expect the yield cycle and the bank stocks to enter a medium-term uptrend, if not even a long-term uptrend.

CSG has key resistance at $12.80 / 13.10$ and $13.80 / 14 / 14.50$. Supports are at $11.10 / 10.90$, $10.30 / 10.20$ and 9.80 to 8.90 .

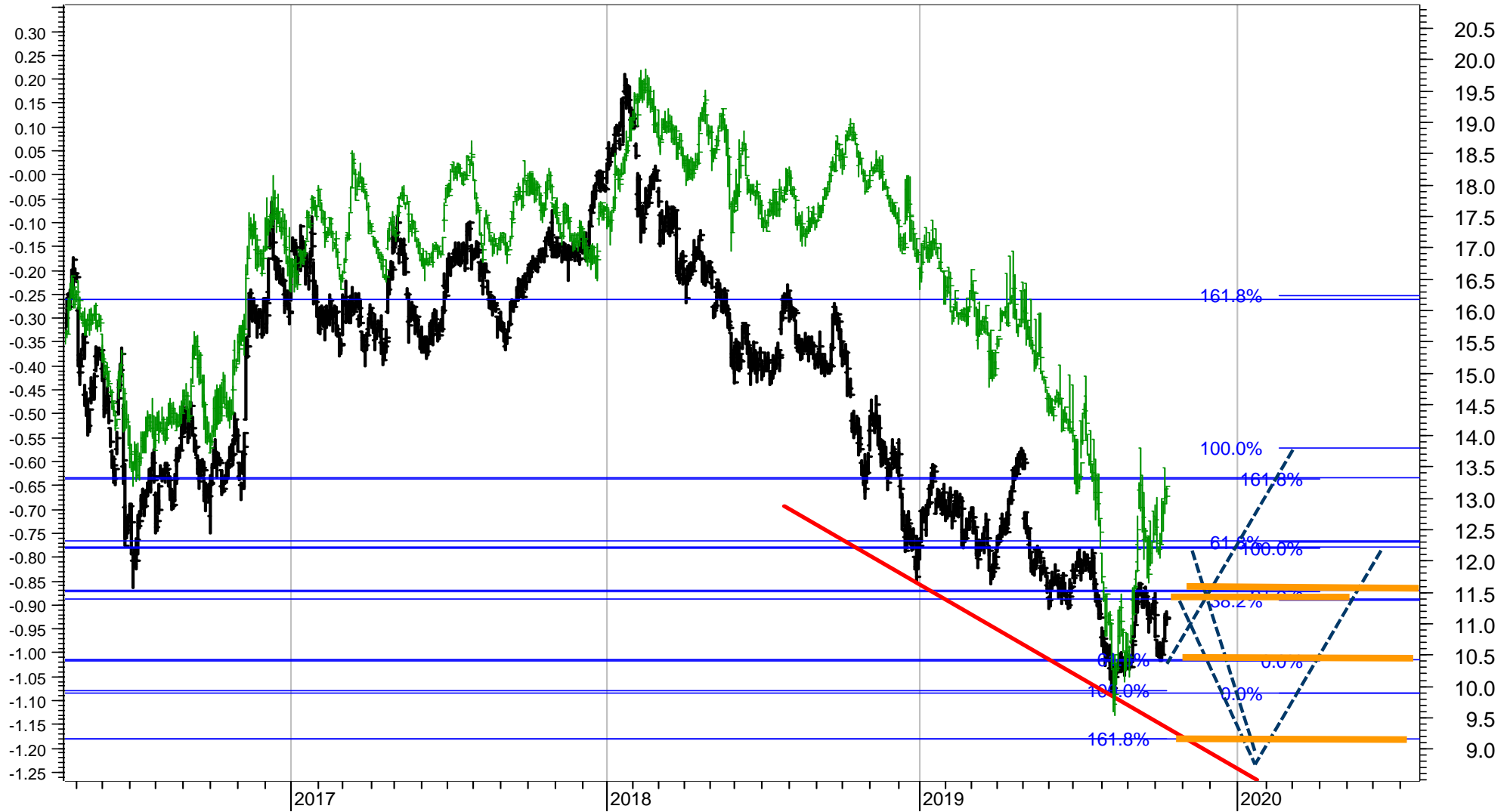


UBS and Swiss 10-year Bond Yield (green) – daily chart

UBS must rise above 11.60 to signal a test of 12.40, a break of which could signal a major turnaround with targets at 13.40 / 13.80 or 16.30. A break of 12.40 would trigger a medium-term uptrend signal.

Supports are 10.40, 9.90 and 9.20.

A break of 11.25 and 11.60 would trigger buy signal.



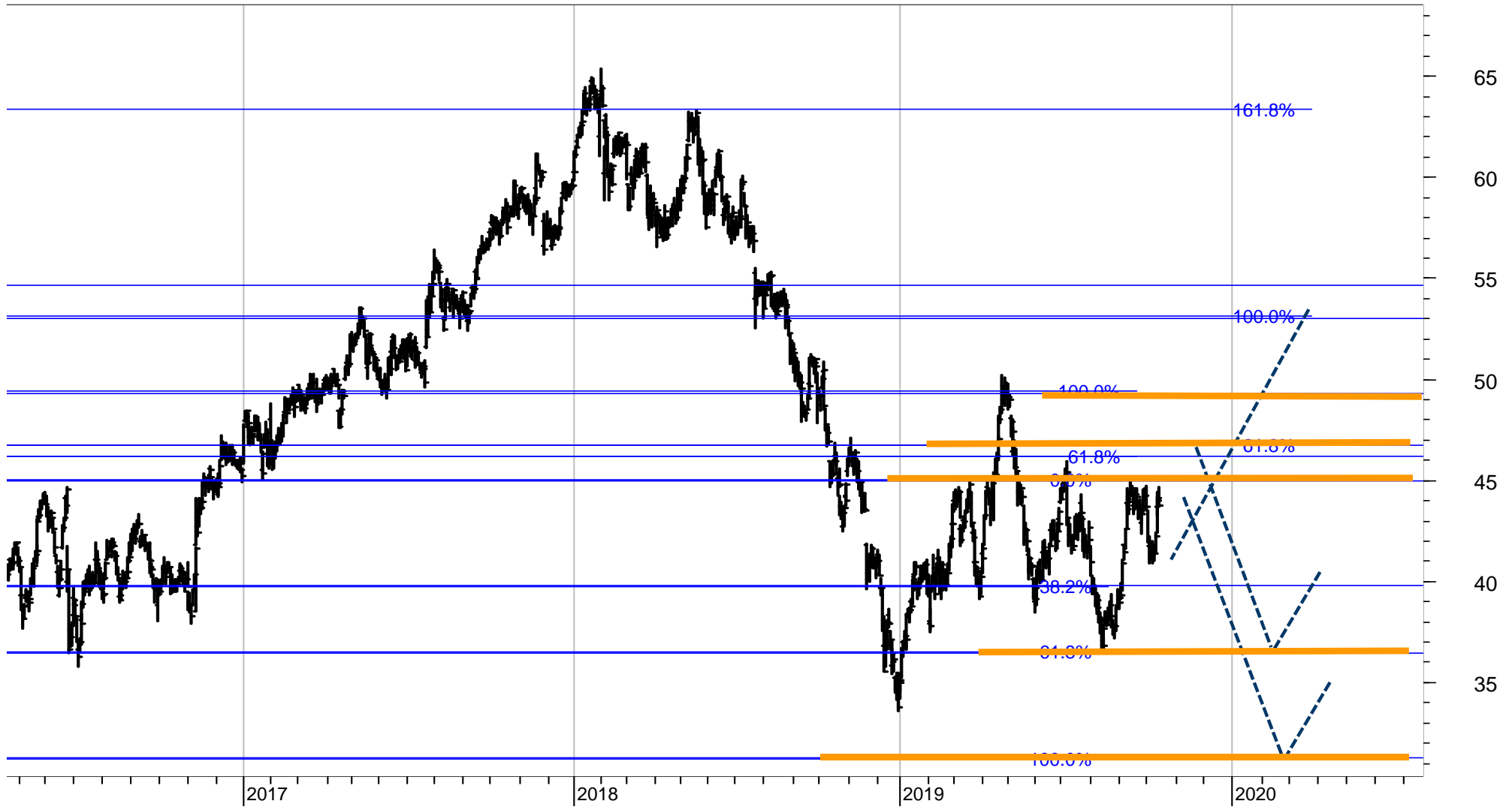
JULIUS BAER – daily chart

Bär is trading just below the major resistance at 45 to 47. Next higher resistance is at 49.50 and 53 / 55.

The supports are at 39.50, 36.50 and 31.

A break of 44.80 / 45 and 47 would signal a bullish medium-term or even long-term upturn.

I am still long from 10.9.2019 at 43.30. I would add to the position if 44.80 and 47 is broken.



HELVETIA – weekly chart

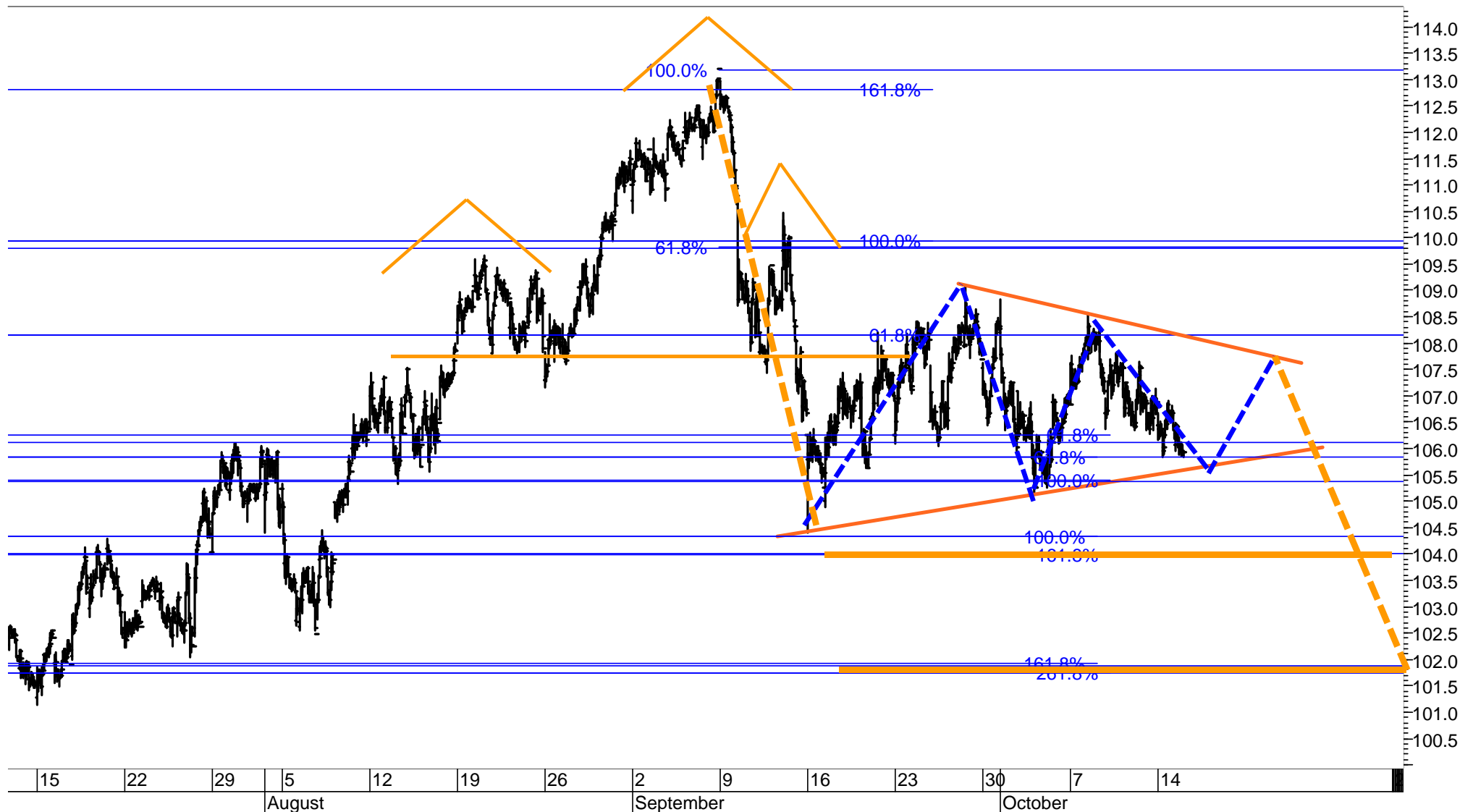
The structure of the uptrend from 2009 indicates a major resistance cluster between 140 and 150.



NESTLE – 30-minute chart

Nestlé failed to reach the resistance of the Inverse Flat, which I had located at 110. It was turned down by the triangle-resistance at 108.50.

Clearly, a break of the supports at 105.50 / 105 and 104.50 / 104 is likely to signal the next major downleg.



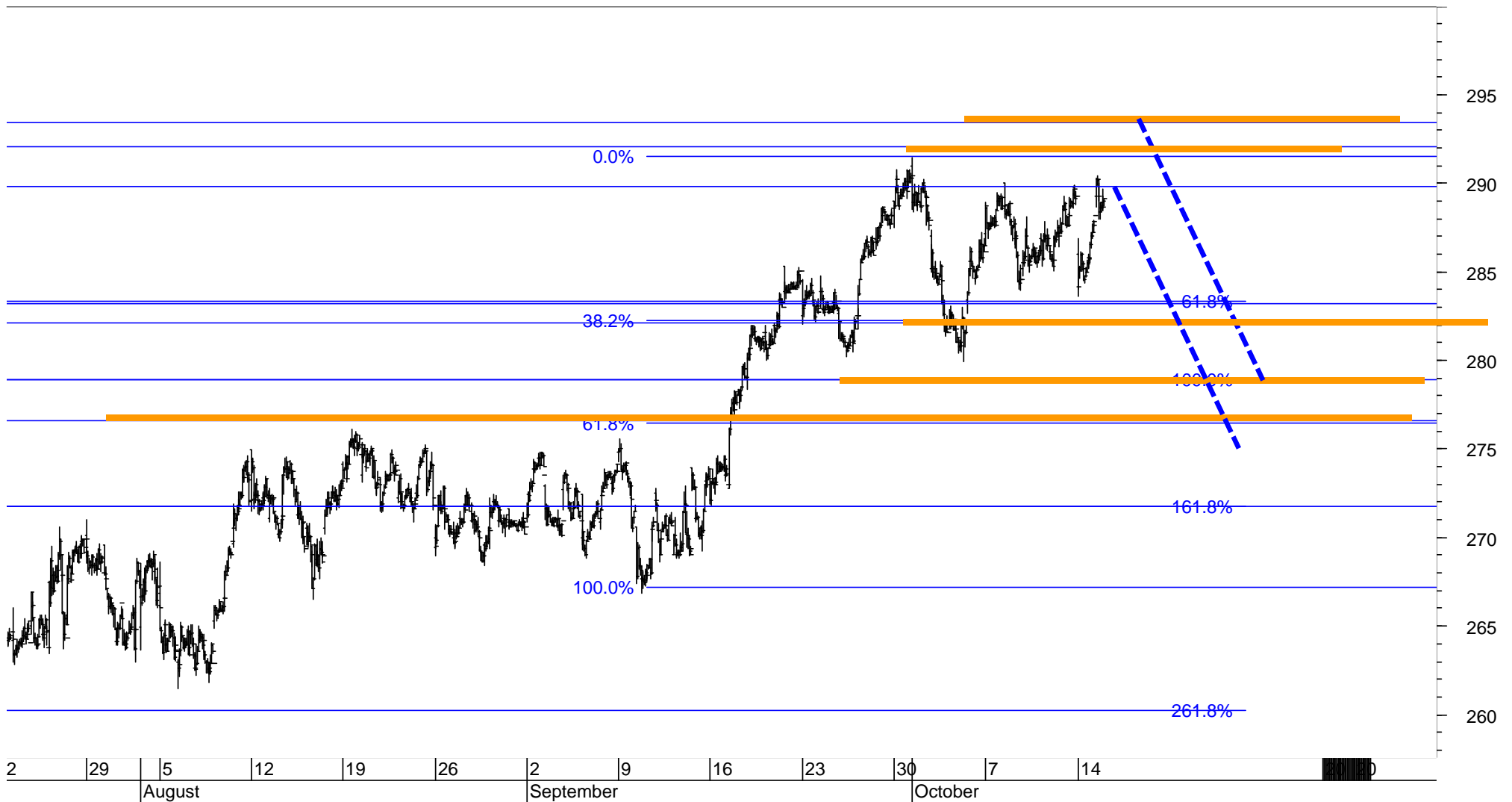
NOVARTIS – 240-minute chart

Novartis is working hard to defend the major support at 84.20 and 83.30. A break of 83 would signal a deeper correction or downleg to 81.50 / 80.50. As long as 80 is not broken the alternate count, which calls for Wave 5 of the Expanding Wedge, can still become effective. I would sell / reduce if 83 is broken and sell again if 80 is broken.



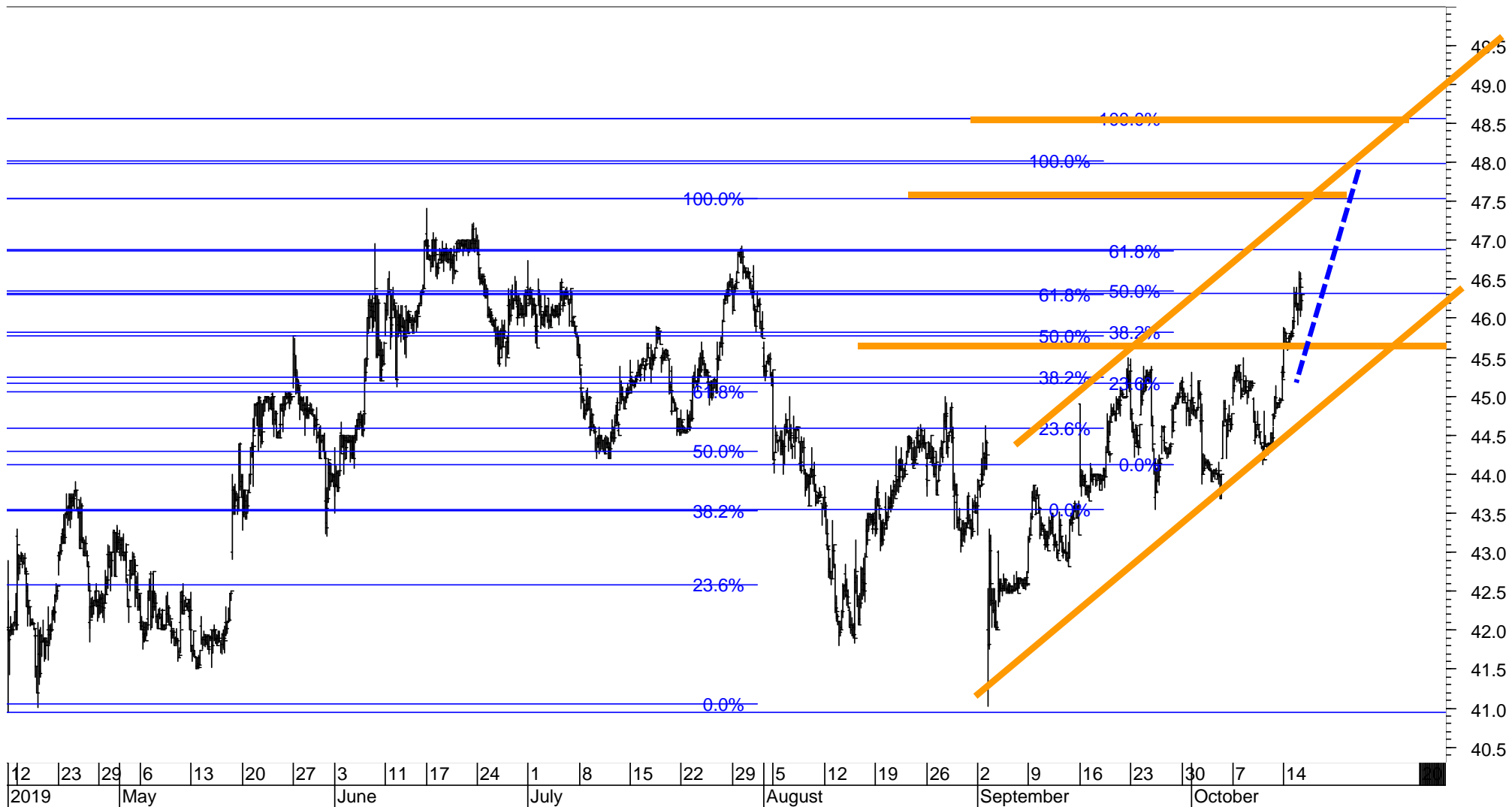
ROCHE GS – 30-minute chart

Roche remains in the consolidation which it entered on 1.10.2019.
Clearly, a break of 282, 219 and 271 would signal a major correction or downleg.
I am still long Roche from 24.5.2019 at 272.10. I would take the profit in my present position if 282 is broken.



STADLER RAIL – hourly chart

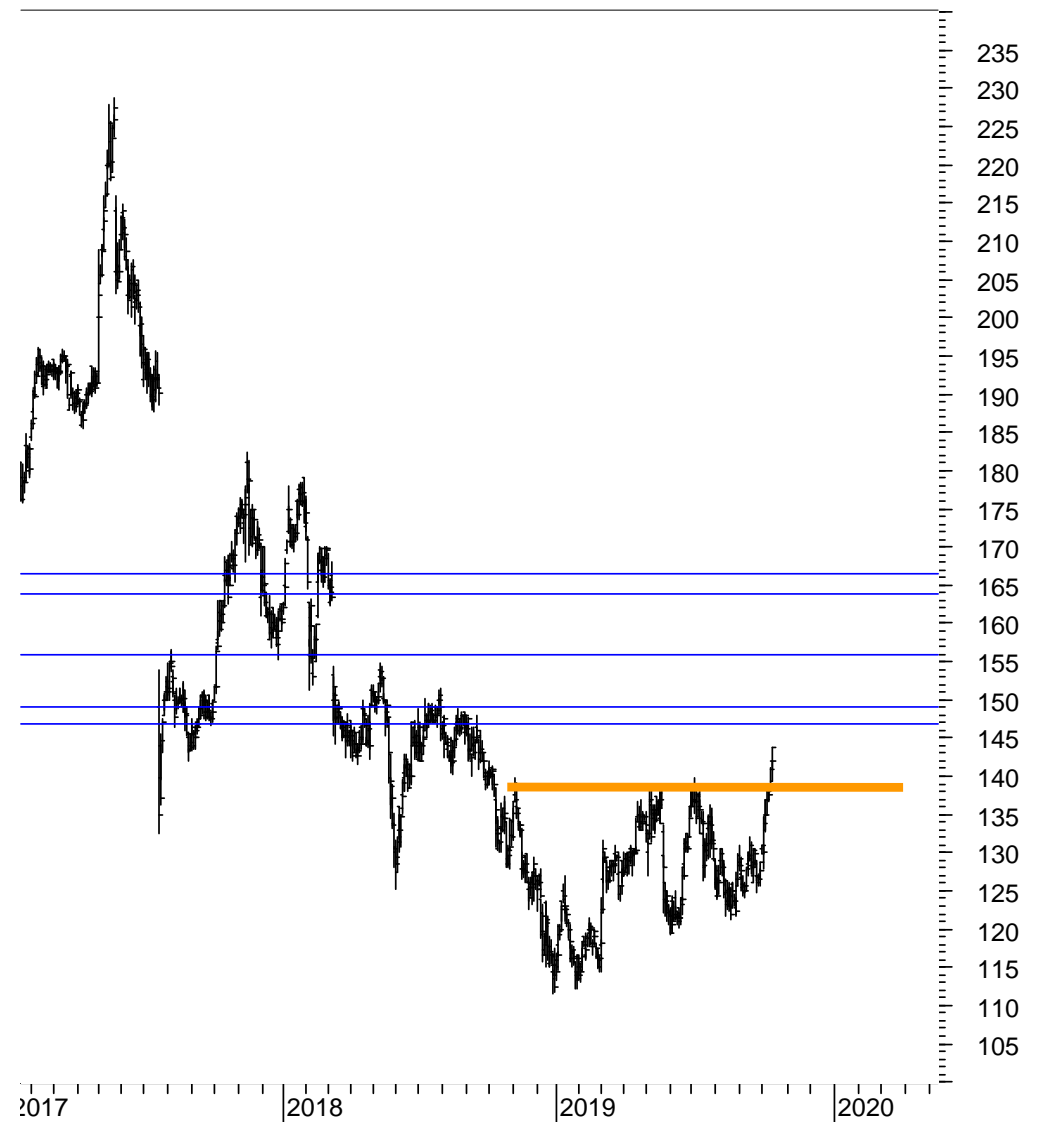
Given that the low on 3.9.2019 at 42.56 was at the same level as the low on 12.4.2019, Wave-equality between the upleg from April to June reveals a target at 47.40. This is where Stadler is rising to. A break of which would signal 50.50 to 51.50. I am still long Stadler from 20.9.2019 at 45.25.



YPSOMED – weekly chart (left) and daily chart

Ypsomed is following my forecast closely.

Following the breakout above 139.50 it is rising to the next resistance levels at 147, 149 or 156 to 164 / 167.



STOXX 200 stocks – listed according to the Score (range from 100% to 0%, 40%-60% is neutral)

The Total Score of all 200 stocks has increased from 44% to 59%. This is slightly POSITIVE.

Stocks marked blue are the Eurostoxx 50 Index constituents

100%	A P MOLLER MAERSK B	MAERSKb.CO
100%	ASML HOLDING	ASML.AS
100%	AXA	AXAF.PA
100%	BARCLAYS	BARC.L
100%	BASF (XET)	BASFn.DE
100%	BNP PARIBAS	BNPP.PA
100%	BOLIDEN ORD SHS	BOL.ST
100%	COVESTRO (XET)	tCOV.DE
100%	CRH (DUB)	CRH.I
100%	DASSAULT SYSTEMES	DAST.PA
100%	DEUTSCHE BOERSE (XET)	DBtGn.DE
100%	DEUTSCHE TELEKOM (XET)	DTEGn.DE
100%	ELECTROLUX B	ELUXb.ST
100%	HEXPOL B	HPOLb.ST
100%	INTESA SANPAOLO	ISP.MI
100%	KBC GROUP	KBC.BR
100%	LLOYDS BANKING GROUP	LLOY.L
100%	LOOMIS B	LOOMb.ST
100%	NORDEA BANK (OME)	NDASE.ST
100%	ORANGE	ORAN.PA
100%	PERNOD-RICARD	PERP.PA
100%	PEUGEOT	PEUP.PA
100%	REPSOL YPF	REP.MC
100%	SAP (XET)	SAPGn.DE
100%	SCHNEIDER ELECTRIC	SCHN.PA
100%	SKANDINAVISKA ENSKILDA B	SEBa.ST
100%	SKANSKA B	SKAb.ST
100%	SKF B	SKFb.ST
100%	SOCIETE GENERALE	SOGN.PA
100%	SVENSKA CELLULOZA AKTIEB	SCAb.ST
100%	TRELLEBORG B	TRELB.ST
100%	VINCI	SGEF.PA
100%	VOLKSWAGEN PREF. (XET)	VOVG_p.DE
94%	ASSICURAZIONI GENERALI	GASI.MI
94%	ENGIE	ENGIE.PA
94%	FASTIGHETS BALDER B	BALDb.ST
94%	GJENSIDIGE FORSIKRING	GJFS.OL
94%	HEINEKEN	HEIN.AS
94%	MERCK KGAA (XET)	MRCG.DE
94%	MUENCHENER RUCK. (XET)	MUVGn.DE
94%	NATIONAL GRID	NG.L
94%	NOVO NORDISK 'B'	NOVOb.CO
94%	TESCO	TSCO.L
94%	THYSSENKRUPP (XET)	TKAG.DE
89%	ALFA LAVAL	ALFA.ST
89%	BMW (XET)	BMWG.DE
89%	BT GROUP	BT.L
89%	DAIMLER (XET)	DAIGn.DE
89%	ING GROEP	INGA.AS
89%	JYSKE BANK	JYSK.CO

89%	MICHELIN	MICP.PA
89%	NOVOZYMES B	NZYMb.CO
89%	ORKLA	ORK.OL
89%	ROYAL BANK OF SCTL.GP.	RBS.L
89%	SANDVIK	SAND.ST
89%	SIEMENS (XET)	SIEGn.DE
89%	SWEDBANK A	SWEDa.ST
89%	WFD UNIBAIL RODAMCO STA	URW.AS
83%	AENA SME	AENA.MC
83%	AIR LIQUIDE	AIRP.PA
83%	ALLIANZ (XET)	ALVG.DE
83%	ESSILORLUXOTTICA	ESLX.PA
83%	HENKEL PREF. (XET)	HNKG.DE
83%	HERMES INTL.	HRMS.PA
83%	INVESTOR B	INVEb.ST
83%	KINNEVIK B	KINvb.ST
83%	KONE 'B'	KNEBV.HE
83%	KONINKLIJKE AHOLD DELHA	AD.AS
83%	LINDE (XET)	LINI.DE
83%	LVMH	LVMH.PA
83%	PLKNC.NAFTOWY ORLEN	PKN.WA
83%	SAFRAN	SAF.PA
83%	TELEFONICA	TEF.MC
83%	TGS-NOPEC GEOPHS.	TGS.OL
78%	ADIDAS (XET)	ADSGn.DE
78%	ANGLO AMERICAN	AAL.L
78%	BANCO SANTANDER	SAN.MC
78%	BANK POLSKA KASA OPIEKI	PEO.WA
78%	CASTELLUM	CAST.ST
78%	DANSKE BANK	DANSKE.CO
78%	DEUTSCHE LUFTHANSA (XET)	LHAG.DE
78%	DNB	DNB.OL
78%	ENEL	ENEI.MI
78%	EPIROC A	EPIRa.ST
78%	INDITEX	ITX.MC
78%	KERING	PRTP.PA
78%	SVENSKA HANDELSBANKEN A	SHBa.ST
78%	TELIA COMPANY	TELIA.ST
78%	VODAFONE GROUP	VOD.L
78%	VONOVIA (XET)	VNA.n.DE
72%	BBV.ARGENTARIA	BBVA.MC
72%	CHRISTIAN DIOR	DIOR.PA
72%	LUNDIN PETROLEUM	LUPE.ST
72%	NATURGY ENERGY	NTGY.MC
72%	SANOFI	SASY.PA
67%	BAYER (XET)	BAYGn.DE
67%	CD PROJECT RED	CDR.WA
67%	DANONE	DANO.PA
67%	DEUTSCHE BANK (XET)	DBGn.DE
67%	DEUTSCHE POST (XET)	DPWGn.DE

67%	ERICSSON B	ERICb.ST
67%	FABEGE	FABG.ST
67%	KINDRED GROUP SDR	KINDsdB.ST
67%	RWE (XET)	RWEG.DE
67%	SECURITAS B	SECub.ST
67%	STOREBRAND	STB.OL
61%	ADYEN	ADYEN.AS
61%	ATLAS COPCO A	ATCOa.ST
61%	NORSK HYDRO	NHY.OL
61%	PRUDENTIAL	PRU.L
61%	ROYAL DUTCH SHELL A	RDSa.AS
61%	VOLVO B	VOLVb.ST
56%	CARLSBERG B	CARLb.CO
56%	CONTINENTAL (XET)	CONG.DE
56%	ENDESA	ELE.MC
56%	FERRARI (MIL)	RACE.MI
56%	HEIDELBERGCEMENT (XET)	HEIG.DE
50%	AMBU B	AMBub.CO
50%	E ON N (XET)	EONGn.DE
50%	IBERDROLA	IBE.MC
50%	INFINEON TECHS. (XET)	IFXGn.DE
50%	SIMCORP	SIM.CO
50%	VESTAS WINDSYSTEMS	VWS.CO
44%	DOMETIC GROUP	DOMETIC.ST
44%	EQUINOR	EQRN.L
44%	FIAT CHRYSLER AUTOS.	FCHA.MI
44%	INNOGY (XET)	IGY.DE
44%	ORSTED	ORSTED.CO
44%	PANDORA	PNDORA.CO
39%	ICA GRUPPEN	ICAA.ST
39%	STANDARD CHARTERED	STAN.L
33%	AAK	AAK.ST
33%	ACCOR	ACCP.PA
33%	ARCELORMITTAL	MT.AS
33%	ASSA ABLOY B	ASSAb.ST
33%	ASTRAZENECA	AZN.L
33%	DSV PANALPINA	DSV.CO
33%	GENMAB	GEN.CO
33%	GLAXOSMITHKLINE	GSK.L
33%	HEINEKEN HOLDING	HEIO.AS
33%	HEXAGON B	HEXAb.ST
33%	KGHM	KGH.WA
33%	SWEDISH MATCH	SWMA.ST
33%	SWEDISH ORPHAN BIOVITRU	SOBIV.ST
28%	AKER BP	AKERBP.OL
28%	ENI	ENI.MI
28%	NOKIA	NOKIA.HE
28%	SANTANDER BANK POLSKA	SPL1.WA
22%	AIRBUS	AIR.PA
22%	ANHEUSER-BUSCH INBEV	ABI.BR

22%	BEIERSDORF (XET)	BEIG.DE
22%	COMPASS GROUP	CPG.L
22%	FRESENIUS (XET)	FREG.DE
22%	FRESENIUS MED.CARE (XET)	FMEG.DE
22%	PHILIPS ELTN.KONINKLIJKE	PHG.AS
22%	RIO TINTO	RIO.L
22%	SCHIBSTED A	SBSTA.OL
22%	TELE2 B	TEL2b.ST
22%	TELENOR	TEL.OL
22%	TOTAL	TOTF.PA
17%	AMADEUS IT GROUP	AMA.MC
17%	CHRISTIAN HANSEN HOLDING	CHRH.CO
17%	GLENCORE	GLEN.L
17%	HUSQVARNA B	HUSQb.ST
17%	L'OREAL	OREP.PA
17%	NESTE	NESTE.HE
17%	SALMAR	SALM.OL
17%	SUBSEA 7	SUBC.OL
17%	VIVENDI	VIV.PA
17%	YARA INTERNATIONAL	YAR.OL
11%	ABN AMRO BANK	ABNd.AS
11%	ASSOCIATED BRIT.FOODS	ABF.L
11%	BRITISH AMERICAN TOBACCO	BATS.L
11%	COLOPLAST B	COLOB.CO
11%	ESSITY B	ESSITYb.ST
11%	GETTING B	GETTb.ST
11%	HSBC HOLDINGS	HSBA.L
11%	IMPERIAL BRANDS	IMB.L
11%	INDUSTRIAL BRANDS A	INDUa.ST
11%	POLISH OIL AND GAS	PGN.WA
11%	PZU GROUP	PZU.WA
11%	RELX	REL.L
11%	SAAB B	SAABb.ST
11%	SAMPO 'A'	SAMPO.HE
11%	UNILEVER	UNA.AS
6%	BHP GROUP	BHPB.L
6%	GN STORE NORD	GN.CO
6%	ISS	ISS.CO
6%	NIBE INDUSTRIER B	NIBEb.ST
0%	BP	BP.L
0%	DIAGEO	DGE.L
0%	EDF	EDF.PA
0%	ELEKTA B	EKTAb.ST
0%	PKO BANK	PKO.WA
0%	RECKITT BENCKISER GROUP	RB.L
0%	SIEMENS (XET) HEALTHINEER	SHLG.DE
0%	THALES	TCFP.PA
0%	TRYG	TRYG.CO
0%	UNILEVER (UK)	ULVR.L
0%	WIRECARD (XET)	WDIG.DE

STOXX 200 stocks – listed alphabetically (A-Infineon)

SCORE	COMPANY	RIC	PRICE	LT	MT	ST
100%	A P MOLLER MAERSK B	MAERSKb.CO	7'874.00	uu+	uu+	uu+
33%	AAK	AAK.ST	188.30	+	dd-	dd-
11%	ABN AMRO BANK	ABNd.AS	16.30	-	-	uu+
33%	ACCOR	ACCP.PA	38.08	u+	-	uu+
78%	ADIDAS (XET)	ADSGn.DE	280.90	+	+	uu+
61%	ADYEN	ADYEN.AS	638.40	uo	uu+	u+
83%	AENA SME	AENA.MC	167.95	u+	+	+
83%	AIR LIQUIDE	AIRP.PA	118.50	+	+	u+
22%	AIRBUS	AIR.PA	118.30	uo	-	u+
28%	AKER BP	AKERBP.OL	243.40	d-	do	uu+
89%	ALFA LAVAL	ALFA.ST	197.45	u+	+	u+
83%	ALLIANZ (XET)	ALVG.DE	210.70	+	+	uu+
17%	AMADEUS IT GROUP	AMA.MC	65.94	-	-	uu+
50%	AMBU B	AMBUb.CO	111.50	o	+	o
78%	ANGLO AMERICAN	AAL.L	1'935.00	uo	u+	uu+
22%	ANHEUSER-BUSCH INBEV	ABI.BR	83.13	+	-	-
33%	ARCELORMITTAL	MT.AS	13.11	-	uo	uu+
100%	ASML HOLDING	ASML.AS	236.10	+	+	+
33%	ASSA ABLOY B	ASSAb.ST	213.40	+	dd-	dd-
94%	ASSICURAZIONI GENERALI	GASI.MI	17.97	+	+	u+
11%	ASSOCIATED BRIT.FOODS	ABF.L	2'187.00	uo	-	-
33%	ASTRAZENECA	AZN.L	6'979.00	+	-	-
61%	ATLAS COPCO A	ATCOa.ST	301.10	+	o	uu+
100%	AXA	AXAF.PA	23.50	+	+	uu+
78%	BANCO SANTANDER	SAN.MC	3.75	o	uu+	uu+
78%	BANK POLSKA KASA OPIEKI	PEO.WA	103.50	uo	+	uu+
100%	BARCLAYS	BARC.L	157.60	u+	u+	uu+
100%	BASF (XET)	BASFn.DE	64.59	+	+	uu+
67%	BAYER (XET)	BAYGn.DE	65.61	+	uo	uu+
72%	BBV.ARGENTARIA	BBVA.MC	4.63	o	+	uu+
22%	BEIERSDORF (XET)	BEIG.DE	104.45	do	-	d-
6%	BHP GROUP	BHPB.L	1'675.00	-	-	uo
89%	BMW (XET)	BMWG.DE	64.91	uu+	u+	uu+
100%	BNP PARIBAS	BNPP.PA	45.39	+	+	uu+
100%	BOLIDEN ORD SHS	BOL.ST	246.90	+	+	uu+
0%	BP	BP.L	492.75	-	d-	-
11%	BRITISH AMERICAN TOBACCO	BATS.L	2'717.00	o	-	-
89%	BT GROUP	BT.L	197.26	uu+	+	+
56%	CARLSBERG B	CARLb.CO	1'001.50	+	do	do
78%	CASTELLUM	CAST.ST	209.70	+	+	+
67%	CD PROJECT RED	CDR.WA	243.00	+	uo	uu+
72%	CHRISTIAN DIOR	DIOR.PA	447.60	uo	uu+	u+
17%	CHRISTIAN HANSEN HOLDING	CHRH.CO	543.80	-	do	-
11%	COLOPLAST B	COLOb.CO	794.00	do	dd-	d-
22%	COMPASS GROUP	CPG.L	2'002.00	+	dd-	dd-
56%	CONTINENTAL (XET)	CONG.DE	115.78	o	uu+	uu+
100%	COVESTRO (XET)	1COV.DE	45.10	+	+	uu+
100%	CRH (DUB)	CRH.I	31.18	+	uu+	uu+
89%	DAIMLER (XET)	DAIGn.DE	47.07	u+	u+	uu+
67%	DANONE	DANO.PA	79.52	+	uo	uu+

SCORE	COMPANY	RIC	PRICE	LT	MT	ST
78%	DANSKE BANK	DANSKE.CO	95.98	o	u+	uu+
100%	DASSAULT SYSTEMES	DAST.PA	137.70	uu+	+	+
67%	DEUTSCHE BANK (XET)	DBKGn.DE	6.85	u+	uo	uu+
100%	DEUTSCHE BOERSE (XET)	DB1Gn.DE	143.85	+	+	u+
67%	DEUTSCHE POST (XET)	DPWGn.DE	29.76	u+	uo	uu+
100%	DEUTSCHE TELEKOM (XET)	DTEGn.DE	15.50	+	+	u+
0%	DIAGEO	DGE.L	3'230.50	d-	-	dd-
78%	DNB	DNB.OL	157.35	u+	+	uu+
44%	DOMETIC GROUP	DOMETIC.ST	80.58	o	uo	uu+
33%	DSV PANALPINA	DSV.CO	637.00	u+	-	u+
50%	E ON N (XET)	EONGn.DE	8.86	-	+	dd-
0%	EDF	EDF.PA	9.42	-	d-	-
100%	ELECTROLUX B	ELUXb.ST	246.90	+	+	+
0%	ELEKTA B	EKTab.ST	122.70	-	-	-
56%	ENDESA	ELE.MC	23.39	do	+	dd-
78%	ENEL	ENEL.MI	6.78	+	+	+
94%	ENGIE	ENGIE.PA	15.10	+	+	+
28%	ENI	ENI.MI	13.74	-	uo	uu+
78%	EPIROC A	EPIRa.ST	106.55	+	+	do
44%	EQUINOR	EQNR.OL	167.00	o	+	-
67%	ERICSSON B	ERICb.ST	82.00	-	+	+
83%	ESSILORLUXOTTICA	ESLX.PA	134.35	+	u+	uu+
11%	ESSITY B	ESSITYb.ST	283.10	do	dd-	dd-
67%	FABEGE	FABG.ST	160.35	+	+	+
94%	FASTIGHETS BALDER B	BALDb.ST	376.00	+	+	+
56%	FERRARI (MIL)	RACE.MI	140.25	+	uo	u+
44%	FIAT CHRYSLER AUTOS.	FCHA.MI	11.94	o	uo	uu+
22%	FRESENIUS (XET)	FREG.DE	42.21	o	-	uu+
22%	FRESENIUS MED.CARE (XET)	FMEG.DE	59.82	uo	-	uo
33%	GENMAB	GEN.CO	1'346.00	+	d-	-
11%	GETINGE B	GETIb.ST	134.00	do	-	-
94%	GJENSIDIGE FORSIKRING	GJFS.OL	181.65	+	+	do
33%	GLAXOSMITHKLINE	GSK.L	1'684.20	+	dd-	dd-
17%	GLENORE	GLEN.L	230.85	uo	-	uo
6%	GN STORE NORD	GN.CO	274.10	-	-	uo
56%	HEIDELBERGCEMENT (XET)	HEIG.DE	63.58	o	uu+	uu+
94%	HEINEKEN	HEIN.AS	97.54	+	+	do
33%	HEINEKEN HOLDING	HEIO.AS	89.60	o	uo	uo
83%	HENKEL PREF. (XET)	HNKG.DE	93.48	+	+	+
83%	HERMES INTL.	HRMS.PA	634.20	u+	uu+	u+
33%	HEXAGON B	HEXAb.ST	452.00	uo	uo	uo
100%	HXPOL B	HPOLb.ST	80.45	u+	+	u+
11%	HSBC HOLDINGS	HSBA.L	607.30	uo	-	-
17%	HUSQVARNA B	HUSQb.ST	73.34	o	-	uo
50%	IBERDROLA	IBE.MC	9.25	+	do	dd-
39%	ICA GRUPPEN	ICAA.ST	445.30	+	-	uo
11%	IMPERIAL BRANDS	IMB.L	1'841.00	-	-	uu+
78%	INDITEX	ITX.MC	28.41	+	+	+
11%	INDUSTRIVARDEN A	INDUa.ST	205.80	o	-	-
50%	INFINEON TECHS. (XET)	IFXGn.DE	16.64	+	uo	uu+

STOXX 200 stocks – listed alphabetically (ING-Z)

SCORE	COMPANY	RIC	PRICE	LT	MT	ST
89%	ING GROEP	INGA.AS	9.83	u+	+	uu+
44%	INNOGY (XET)	IGY.DE	44.50	+	o	do
100%	INTESA SANPAOLO	ISP.MI	2.18	+	+	uu+
83%	INVESTOR B	INVEb.ST	476.50	+	+	uu+
6%	ISS	ISS.CO	162.85	-	-	uo
89%	JYSKE BANK	JYSK.CO	224.00	u+	+	u+
100%	KBC GROUP	KBC.BR	60.84	+	+	uu+
78%	KERING	PRTP.PA	471.70	uo	uu+	uu+
33%	KGHM	KGH.WA	78.58	-	uo	uu+
67%	KINDRED GROUP SDR	KINDsdb.ST	58.70	-	u+	uu+
83%	KINNEVIK B	KINVb.ST	261.60	u+	u+	u+
83%	KONE 'B'	KNEBV.HE	52.42	+	o	+
83%	KONINKLIJKE AHOLD DELHA	AD.AS	22.77	+	+	o
83%	LINDE (XET)	LINI.DE	176.00	+	+	uu+
100%	LLOYDS BANKING GROUP	LLOY.L	57.79	uu+	u+	uu+
100%	LOOMIS B	LOOMB.ST	363.60	+	+	+
17%	L'OREAL	OREP.PA	243.80	dd-	do	dd-
78%	DEUTSCHE LUFTHANSA (XET)	LHAG.DE	14.81	uo	+	+
72%	LUNDIN PETROLEUM	LUPE.ST	301.40	uu+	uo	uu+
83%	LVMH	LVMH.PA	379.25	u+	uu+	u+
89%	MICHELIN	MICP.PA	102.95	u+	uu+	uu+
94%	MERCK KGAA (XET)	MRCG.DE	104.15	+	+	u+
94%	MUENCHENER RUCK. (XET)	MUVGn.DE	240.20	+	+	+
94%	NATIONAL GRID	NG.L	883.80	+	+	+
72%	NATURGY ENERGY	NTGY.MC	24.13	o	+	u+
17%	NESTE	NESTE.HE	28.80	-	o	d-
6%	NIBE INDUSTRIER B	NIBEb.ST	121.10	-	-	uo
28%	NOKIA	NOKIA.HE	4.56	-	uo	uu+
100%	NORDEA BANK (OME)	NDASE.ST	69.50	u+	+	uu+
61%	NORSK HYDRO	NHY.OL	31.25	+	+	uo
94%	NOVO NORDISK 'B'	NOVOb.CO	354.45	+	+	+
89%	NOVOZYMES B	NZYMb.CO	298.40	uo	uu+	uu+
100%	ORANGE	ORAN.PA	14.70	+	+	+
89%	ORKLA	ORK.OL	83.92	+	+	do
44%	ORSTED	ORSTED.CO	628.40	+	-	o
44%	PANDORA	PNDORA.CO	275.70	+	-	u+
100%	PERNOD-RICARD	PERP.PA	168.65	+	+	+
100%	PEUGEOT	PEUP.PA	22.83	u+	u+	uu+
22%	PHILIPS ELTN.KONINKLIJKE	PHG.AS	39.35	do	-	-
0%	PKO BANK	PKO.WA	36.70	-	-	-
83%	PLKNC.NAFTOWY ORLEN	PKN.WA	101.10	+	+	+
11%	POLISH OIL AND GAS	PGN.WA	4.66	-	-	uu+
61%	PRUDENTIAL	PRU.L	1'467.50	uo	uu+	uu+
11%	PZU GROUP	PZU.WA	37.11	-	-	uu+
0%	RECKITT BENCKISER GROUP	RB.L	6'093.00	-	-	d-
11%	RELX	REL.L	1'816.50	o	-	d-
100%	REPSOL YPF	REP.MC	14.53	+	+	u+
22%	RIO TINTO	RIO.L	4'115.00	uo	-	uu+
89%	ROYAL BANK OF SCTL.GP.	RBS.L	215.20	uu+	uu+	uu+
61%	ROYAL DUTCH SHELL A	RDSa.AS	26.16	uo	+	-

SCORE	COMPANY	RIC	PRICE	LT	MT	ST
67%	RWE (XET)	RWEG.DE	27.23	+	+	d-
11%	SAAB B	SAABb.ST	274.70	-	-	uu+
83%	SAFRAN	SAF.PA	141.45	+	+	-
17%	SALMAR	SALM.OL	404.60	dd-	d-	+
11%	SAMPO 'A'	SAMPO.HE	35.83	-	-	uu+
89%	SANDVIK	SAND.ST	153.25	u+	u+	uu+
72%	SANOFI	SASY.PA	81.41	+	+	d-
28%	SANTANDER BANK POLSKA	SPL1.WA	300.00	-	uo	uu+
100%	SAP (XET)	SAPG.DE	114.76	uu+	uu+	uu+
22%	SCHIBSTED A	SBSTA.OL	259.00	+	dd-	dd-
100%	SCHNEIDER ELECTRIC	SCHN.PA	80.32	+	u+	uu+
67%	SECURITAS B	SECUB.ST	149.60	-	uu+	uu+
89%	SIEMENS (XET)	SIEGn.DE	99.18	u+	+	+
0%	SIEMENS (XET) HEALTHINEER	SHLG.DE	35.34	d-	dd-	dd-
50%	SIMCORP	SIM.CO	604.00	-	uu+	uu+
100%	SKANDINAVISKA ENSKILDA B	SEBa.ST	91.96	u+	+	uu+
100%	SKANSKA B	SKAb.ST	203.30	+	+	+
100%	SKF B	SKFb.ST	168.45	u+	uu+	uu+
100%	SOCIETE GENERALE	SOGN.PA	25.22	+	u+	uu+
39%	STANDARD CHARTERED	STAN.L	654.80	o	uo	uu+
67%	STOREBRAND	STB.OL	56.60	-	+	uu+
17%	SUBSEA 7	SUBC.OL	88.90	o	dd-	uo
100%	SVENSKA CELLULOZA AKTIEB	SCAb.ST	93.04	+	+	+
78%	SVENSKA HANDELSBANKEN A	SHBa.ST	92.36	uo	+	uu+
89%	SWEDBANK A	SWEDa.ST	139.50	u+	+	uu+
33%	SWEDISH MATCH	SWMA.ST	393.70	d-	+	d-
33%	SWEDISH ORPHAN BIOVITRU	SOBIV.ST	162.95	-	uo	uu+
22%	TELE2 B	TEL2b.ST	137.80	+	dd-	d-
83%	TELEFONICA	TEF.MC	6.99	uu+	+	u+
22%	TELENOR	TEL.OL	180.35	do	dd-	dd-
78%	TELIA COMPANY	TELIA.ST	44.23	+	+	u+
94%	TESCO	TSCO.L	239.10	+	+	uo
83%	TGS-NOPEC GEOPHS.	TGS.OL	233.10	+	+	+
0%	THALES	TCFP.PA	96.72	-	-	-
94%	THYSSENKRUPP (XET)	TKAG.DE	12.56	+	+	uu+
22%	TOTAL	TOTF.PA	45.84	-	uo	uo
100%	TRELLEBORG B	TRELB.ST	142.40	u+	uu+	uu+
0%	TRYG	TRYG.CO	187.40	-	-	-
89%	WFD UNIBAIL RODAMCO STA	URW.AS	127.00	+	+	+
0%	UNILEVER (UK)	ULVR.L	4'645.00	dd-	-	d-
11%	UNILEVER	UNA.AS	53.40	do	dd-	dd-
50%	VESTAS WINDSYSTEMS	VWS.CO	540.60	-	uu+	uu+
100%	VINCI	SGEF.PA	99.16	+	u+	u+
17%	VIVENDI	VIV.PA	24.91	uo	-	o
78%	VODAFONE GROUP	VOD.L	161.00	+	+	do
100%	VOLKSWAGEN PREF. (XET)	VOWG_p.DE	161.84	u+	uu+	uu+
61%	VOLVO B	VOLVb.ST	138.30	o	uo	uu+
78%	VONOVIA (XET)	VNAn.DE	46.56	+	+	do
0%	WIRECARD (XET)	WDIG.DE	140.00	d-	-	d-
17%	YARA INTERNATIONAL	YAR.OL	383.60	o	-	do

Eurostoxx 50 constituent stocks - listed to Score (left) and alphabetically (right)

SCORE	COMPANY	RIC	PRICE	LT	MT	ST	COMMENT	DATE BOUGHT	PRICE BOUGHT	PROFIT or LOSS
100%	ASML HOLDING									
100%	AXA									
100%	BASF (XET)									
100%	BNP PARIBAS									
100%	CRH (DUB)									
100%	DEUTSCHE BOERSE (XET)									
100%	DEUTSCHE TELEKOM (XET)									
100%	INTESA SANPAOLO									
100%	ORANGE									
100%	SAP (XET)									
100%	SCHNEIDER ELECTRIC									
100%	SOCIETE GENERALE									
100%	VINCI									
100%	VOLKSWAGEN PREF. (XET)									
94%	ENGIE									
94%	MUENCHENER RUCK. (XET)									
89%	BMW (XET)									
89%	DAIMLER (XET)									
89%	ING GROEP									
89%	SIEMENS (XET)									
83%	AIR LIQUIDE									
83%	ALLIANZ (XET)									
83%	ESSILORLUXOTTICA									
83%	KONINKLIJKE AHOLD DELHA									
83%	LINDE (XET)									
83%	LVMH									
83%	SAFRAN									
83%	TELEFONICA									
78%	ADIDAS (XET)									
78%	BANCO SANTANDER									
78%	ENEL									
78%	INDITEX									
78%	KERING									
72%	BBV.ARGENTARIA									
72%	SANOFI									
67%	BAYER (XET)									
67%	DANONE									
67%	DEUTSCHE POST (XET)									
50%	IBERDROLA									
28%	ENI									
28%	NOKIA									
22%	AIRBUS									
22%	ANHEUSER-BUSCH INBEV									
22%	FRESENIUS (XET)									
22%	PHILIPS EL.TN.KONINKLIJKE									
22%	TOTAL									
17%	AMADEUS IT GROUP									
17%	L'OREAL									
17%	VIVENDI									
11%	UNILEVER									
78%	ADIDAS (XET)	ADSGn.DE	280.90	+	+	uu+	Sell signals to be triggered if 261 and 245 are broken.			
22%	AIRBUS	AIR.PA	118.30	uo	-	u+	Sell signals if the supports at 114 and 112 are broken.			
83%	AIR LIQUIDE	AIRP.PA	118.50	+	+	u+	Sell if 112 is broken. Support is 108.50.			
83%	ALLIANZ (XET)	ALVG.DE	210.70	+	+	uu+	Next sell signal will be triggered if 204.50 and 199 are broken.			
17%	AMADEUS IT GROUP	AMA.MC	65.94	-	-	uu+				
22%	ANHEUSER-BUSCH INBEV	ABI.BR	83.13	+	-	-	Sell signal will be triggered if 79 is broken.			
100%	ASML HOLDING	ASML.AS	236.10	+	+	+				
100%	AXA	AXAF.PA	23.50	+	+	uu+	BUY only if 24 is broken. Next target is 25,5026 and 27.			
78%	BANCO SANTANDER	SAN.MC	3.75	o	uu+	uu+				
100%	BASF (XET)	BASFn.DE	64.59	+	+	uu+	Must rise above 68 to signal a turnaround.			
67%	BAYER (XET)	BAYGn.DE	65.61	+	uo	uu+				
72%	BBV.ARGENTARIA	BBVA.MC	4.63	o	+	uu+				
89%	BMW (XET)	BMWG.DE	64.91	uu+	u+	uu+	Must rise above 66,50 to signal 69 or 74.			
100%	BNP PARIBAS	BNPP.PA	45.39	+	+	uu+	BUY only if 46,30 is broken. Next target is 48,50 and 50.			
100%	CRH (DUB)	CRH.I	31.18	+	uu+	uu+				
89%	DAIMLER (XET)	DAIGn.DE	47.07	u+	u+	uu+	BUY only if the resistance at 48,50 is broken. Targets are 51,50, 56,50.			
67%	DANONE	DANO.PA	79.52	+	uo	uu+	Sell signals if the supports at 77, 76,20, 74,80 are broken.			
100%	DEUTSCHE BOERSE (XET)	DB1Gn.DE	143.85	+	+	u+				
67%	DEUTSCHE POST (XET)	DPWGn.DE	29.76	u+	uo	uu+				
100%	DEUTSCHE TELEKOM (XET)	DTEGn.DE	15.50	+	+	u+				
78%	ENEL	ENEI.MI	6.78	+	+	+				
94%	ENGIE	ENGIE.PA	15.10	+	+	+				
28%	ENI	ENI.MI	13.74	-	uo	uu+				
83%	ESSILORLUXOTTICA	ESLX.PA	134.35	+	u+	uu+				
22%	FRESENIUS (XET)	FREG.DE	42.21	o	-	uu+				
50%	IBERDROLA	IBE.MC	9.25	+	do	dd-	Sell signals to be triggered if 9,25 and 9,05 is broken.			
78%	INDITEX	ITX.MC	28.41	+	+	+				
89%	ING GROEP	INGA.AS	9.83	u+	+	uu+				
100%	INTESA SANPAOLO	ISP.MI	2.18	+	+	uu+	Sell signals were triggered at 2,1150, 2,1070 and 2,0950.			
78%	KERING	PRTP.PA	471.70	uo	uu+	uu+				
83%	KONINKLIJKE AHOLD DELHA	AD.AS	22.77	+	+	o				
83%	LINDE (XET)	LINI.DE	176.00	+	+	uu+	Sell signals will be triggered if 165 and 157 is broken.			
17%	L'OREAL	OREP.PA	243.80	dd-	do	dd-				
83%	LVMH	LVMH.PA	379.25	u+	uu+	u+				
94%	MUENCHENER RUCK. (XET)	MUVGn.DE	240.20	+	+	+	Next resistance is 245 / 248.			
28%	NOKIA	NOKIA.HE	4.56	-	uo	uu+				
100%	ORANGE	ORAN.PA	14.70	+	+	+				
22%	PHILIPS EL.TN.KONINKLIJKE	PHG.AS	39.35	do	-	-				
83%	SAFRAN	SAF.PA	141.45	+	+	-	Correcting below medium-term resistance at 145.			
72%	SANOFI	SASY.PA	81.41	+	+	d-				
100%	SAP (XET)	SAPG.DE	114.76	uu+	uu+	uu+	Resistance is 117 and 125.			
100%	SCHNEIDER ELECTRIC	SCHN.PA	80.32	+	u+	uu+				
89%	SIEMENS (XET)	SIEGn.DE	99.18	u+	+	+	Hold.	29.08.2019	90.00	10.20%
100%	SOCIETE GENERALE	SOGN.PA	25.22	+	u+	uu+	Sell signal was triggered with the break of 25.			
83%	TELEFONICA	TEF.MC	6.99	uu+	+	u+	TOOK PROFIT of 11,5%.			
22%	TOTAL	TOTF.PA	45.84	-	uo	uo				
11%	UNILEVER	UNA.AS	53.40	do	dd-	dd-	Forming a Head and Shoulder Top with sell signal if 53 is broken.			
100%	VINCI	SGEF.PA	99.16	+	u+	u+	Sell signals if 95 and 93 is broken.			
17%	VIVENDI	VIV.PA	24.91	uo	-	o				
100%	VOLKSWAGEN PREF. (XET)	VOWG_p.DE	161.84	u+	uu+	uu+	Must rise >173 to signal 185 / 190 or 197 / 210.			

AXA – daily chart

AXA must rise above 24 to trigger a medium-term uptrend signal.

Next resistance is 25, 26 and 27.

Supports are at 21.50 and 20.20.



SIEMENS – daily chart

Siemens will have to break 101 to signal 109 or 124.
I am still long Siemens from 29.8.2019 at 90.



S&P 200 stocks – listed according to the Score (range from 100% to 0%, 40%-60% is neutral)

The Total Score of all 200 stocks has increased from 40% to 52%. This is NEUTRAL.

100%	ACTIVISION BLIZZARD	ATVI.O
100%	AMGEN	AMGN.O
100%	AMPHENOL 'A'	APH
100%	APPLE	AAPL.O
100%	BRISTOL MYERS SQUIB	BMY
100%	CELGENE	CELG.O
100%	CHARTER COMMS.CL.A	CHTR.O
100%	CITIGROUP	C
100%	EMERSON ELECTRIC	EMR
100%	ILLINOIS TOOL WORKS	ITW
100%	JP MORGAN CHASE & C	JPM
100%	LAM RESEARCH	LRCX.O
100%	LYONDELLBASELL IND	LYB
100%	NIKE 'B'	NKE
100%	NVIDIA	NVDA.O
100%	PEPSICO	PEP.O
100%	PNC FINL.SVS.GP.	PNC
100%	RAYTHEON 'B'	RTN
100%	TARGET	TGT
100%	TJX	TJX
100%	UNITED TECHNOLOGIE	UTX
100%	V F	VFC
100%	VALERO ENERGY	VLO
94%	BB&T	BBT
94%	DOLLAR GENERAL	DG
94%	DOMINION ENERGY	D
94%	MARATHON PETROLEU	MPC
94%	SOUTHWEST AIRLINES	LUV
94%	SYSCO	SY
94%	WELLS FARGO & CO	WFC
89%	ABBVIE	ABBV.K
89%	AFLAC	AFL
89%	CATERPILLAR	CAT
89%	CVS HEALTH	CVS
89%	O REILLY AUTOMOTIVE	ORLY.O
89%	PAYCHEX	PAYX.O
83%	ALLERGAN	AGN
83%	ALLSTATE ORD SHS	ALL
83%	AMERICAN TOWER	AMT
83%	APPLIED MATS.	AMAT.O
83%	AT&T	T
83%	BANK OF AMERICA	BAC
83%	BAXTER INTL.	BAX
83%	COSTCO WHOLESALE	COST.O
83%	DEERE	DE
83%	EDWARDS LIFESCIENCE	EW
83%	EQUINIX REIT	EQIX.O
83%	FISERV	FISV.O
83%	HOME DEPOT	HD
83%	INTEL	INTC.O

83%	INTERCONTINENTAL E	ICE
83%	MASTERCARD	MA
83%	MICROSOFT	MSFT.O
83%	MOODY'S	MCO
83%	ORACLE	ORCL.K
83%	PHILLIPS 66	PSX
83%	PROLOGIS	PLD
83%	PUB.SER.ENTER.GP.	PEG
83%	ROSS STORES	ROST.O
83%	TEXAS INSTRUMENTS	TXN.O
83%	VISA 'A'	V
78%	ALPHABET 'C'	GOOG.O
78%	PRUDENTIAL FINL.	PRU
78%	REGENCY CENTERS	REG.O
78%	REGENERON PHARMS.	REGN.O
78%	SHERWIN-WILLIAMS	SHW
78%	WALMART	WMT
78%	ZOETIS	ZTS
72%	BERKSHIRE HATHAWAY	BRKb
72%	DUKE ENERGY	DUK
72%	INTERNATIONAL BUS.M	IBM
72%	LINDE	LIN
72%	MERCK & COMPANY	MRK
72%	NEXTERA ENERGY	NEE
72%	SEMPRA EN.	SRE
72%	VERIZON COMMUNICAT	VZ
67%	AUTODESK	ADSK.O
67%	BOEING	BA
67%	CSX	CSX.O
67%	DOW CHEMICAL	DOW
67%	ILLUMINA	ILMN.O
67%	JOHNSON & JOHNSON	JNJ
67%	LOWE'S COMPANIES	LOW
67%	NORFOLK SOUTHERN	NSC
67%	PFIZER	PFE
67%	SOUTHERN	SO
67%	WALGREENS BOOTS AL	WBA.O
67%	WELLTOWER	WELL.K
61%	ADVANCED MICRO DEV	AMD.O
61%	BOOKING HOLDINGS	BKNG.O
61%	COMCAST A	CMCSA.O
61%	CONOCOPHILLIPS	COP
61%	EATON	ETN
61%	GILEAD SCIENCES	GILD.O
61%	MEDTRONIC	MDT
61%	PHILIP MORRIS INTL.	PM
61%	QUALCOMM	QCOM.O
56%	BLACKROCK	BLK
56%	LOCKHEED MARTIN	LMT
56%	WASTE MANAGEMENT	WM

50%	CAMECO (NYS)	CCJ
50%	CME GROUP	CME.O
50%	FIDELITY NAT.INFO.SV	FIS
50%	NETFLIX	NFLX.O
50%	NORTHROP GRUMMAN	NOC
50%	S&P GLOBAL	SPGI.K
44%	MICRON TECHNOLOGY	MU.O
44%	MORGAN STANLEY	MS
39%	AMER.ELEC.PWR.	AEP
39%	AON CLASS A	AON
39%	INTUITIVE SURGICAL	ISRG.O
39%	JOHNSON CONTROLS I	JCI
39%	STRYKER	SYK
39%	UNITED PARCEL SER.'B'	UPS
33%	ALEXION PHARMS.	ALXN.O
33%	ALTRIA GROUP	MO
33%	BROADCOM	AVGO.O
33%	CHUBB	CB
33%	COCA COLA	KO
33%	DOVER	DOV
33%	ELECTRONIC ARTS	EA.O
33%	ESTEE LAUDER COS.'A'	EL
33%	EXELON	EXC
33%	FORTIVE	FTV
33%	GENERAL DYNAMICS	GD
33%	GENERAL MILLS	GIS
33%	GOLDMAN SACHS GP.	GS
33%	PROCTER & GAMBLE	PG
33%	STARBUCKS	SBUX.O
28%	AMERICAN INTL.GP.	AIG
28%	FACEBOOK CLASS A	FB.O
28%	INTUIT	INTU.O
28%	PUBLIC STORAGE	PSA
28%	SALESFORCE.COM	CRM
28%	TRANSOCEAN	RIG
28%	US BANCORP	USB
22%	ANALOG DEVICES	ADI.O
22%	BANK OF NEW YORK M	BK
22%	BECTON DICKINSON	BDX
22%	CHARLES SCHWAB	SCHW.K
22%	CHEVRON	CVX
22%	DANAHER	DHR
22%	EBAY	EBAY.O
22%	FORD MOTOR	F
22%	GENERAL ELECTRIC	GE
22%	MCDONALDS	MCD
22%	METLIFE	MET
22%	MONDELEZ INTERNATI	MDLZ.O
22%	SCHLUMBERGER	SLB
22%	TE CONNECTIVITY	TEL

22%	WILLIAMS	WMB
22%	YUM! BRANDS	YUM
17%	ACCENTURE CLASS A	ACN
17%	ADOBE (NAS)	ADBE.O
17%	AUTOMATIC DATA PRO	ADP.O
17%	ECOLAB	ECL
17%	ELI LILLY	LLY
17%	GENERAL MOTORS	GM
17%	MARRIOTT INTL.'A'	MAR.O
17%	SIMON PROPERTY GRO	SPG
17%	VERTEX PHARMS.	VRTX.O
11%	3M	MMM
11%	AIR PRDS.& CHEMS.	APD
11%	AMAZON.COM	AMZN.O
11%	AMERICAN EXPRESS	AXP
11%	BIOGEN	BIIB.O
11%	CIGNA	CI
11%	COGNIZANT TECH.SLT	CTSH.O
11%	COLGATE-PALM.	CL
11%	CONSTELLATION BRAN	STZ
11%	CROWN CASTLE INTL.	CCI
11%	EXXON MOBIL	XOM
11%	FEDEX	FDX
11%	HCA HEALTHCARE	HCA
11%	HUMANA	HUM
11%	KIMBERLY-CLARK	KMB
11%	KINDER MORGAN	KMI
11%	KRAFT HEINZ	KHC.O
11%	MONSTER BEVERAGE	MNST.O
11%	ONEOK	OKE
11%	PAYPAL HOLDINGS	PYPL.O
11%	TRAVELERS COS.	TRV
11%	UNION PACIFIC	UNP
11%	UNITEDHEALTH GROU	UNH
11%	XILINX	XLNX.O
6%	ABBOTT LABORATORIE	ABT
6%	ALLIANCE DATA SYSTE	ADS
6%	ANTHEM	ANTM.K
6%	EOG RES.	EOG
6%	HONEYWELL INTL.	HON
6%	IQVIA HOLDINGS	IQV
6%	MARSH & MCLENNAN	MMC
6%	PROGRESSIVE OHIO	PGR
6%	WALT DISNEY	DIS
0%	BOSTON SCIENTIFIC	BSX
0%	CISCO SYSTEMS	CSCO.O
0%	DELTA AIR LINES	DAL
0%	HP	HPQ
0%	OCCIDENTAL PTL.	OXY
0%	ROPER TECHNOLOGIES	ROP

S&P 200 stocks – listed alphabetically (A-HP)

SCORE	COMPANY	RIC	PRICE	LT	MT	ST
11%	3M	MMM	160.51	-	-	uu+
6%	ABBOTT LABORATORIE	ABT	79.82	-	-	uo
89%	ABBVIE	ABBV.K	73.76	+	+	do
17%	ACCENTURE CLASS A	ACN	185.50	do	-	uo
100%	ACTIVISION BLIZZARD	ATVI.O	55.01	+	+	+
17%	ADOBE (NAS)	ADBE.O	277.78	-	-	+
61%	ADVANCED MICRO DEV	AMD.O	30.53	uo	uu+	uu+
89%	AFLAC	AFL	52.51	uo	+	+
11%	AIR PRDS.& CHEMS.	APD	213.86	o	-	-
33%	ALEXION PHARMS.	ALXN.O	101.34	-	uo	uu+
83%	ALLERGAN	AGN	168.94	+	+	+
6%	ALLIANCE DATA SYSTE	ADS	122.54	-	-	uo
83%	ALLSTATE ORD SHS	ALL	108.23	+	+	u+
78%	ALPHABET 'C'	GOOG.O	1'217.14	+	+	uo
33%	ALTRIA GROUP	MO	42.72	-	uo	+
11%	AMAZON.COM	AMZN.O	1'736.43	-	-	u+
39%	AMER.ELEC.PWR.	AEP	92.03	+	do	dd-
11%	AMERICAN EXPRESS	AXP	116.39	-	-	uo
28%	AMERICAN INTL.GP.	AIG	54.21	+	-	uo
83%	AMERICAN TOWER	AMT	225.64	+	+	+
100%	AMGEN	AMGN.O	202.89	+	u+	+
100%	AMPHENOL 'A'	APH	96.91	+	+	+
22%	ANALOG DEVICES	ADI.O	110.34	do	-	uu+
6%	ANTHEM	ANTM.K	234.82	-	-	uo
39%	AON CLASS A	AON	191.28	o	uo	uo
100%	APPLE	AAPL.O	235.87	+	+	+
83%	APPLIED MATS.	AMAT.O	51.94	+	+	uu+
83%	AT&T	T	37.47	+	+	+
67%	AUTODESK	ADSK.O	150.27	-	uu+	uu+
17%	AUTOMATIC DATA PRO	ADP.O	162.46	-	-	u+
83%	BANK OF AMERICA	BAC	29.14	u+	uu+	uu+
22%	BANK OF NEW YORK M	BK	43.91	uo	-	uu+
83%	BAXTER INTL.	BAX	87.20	+	uo	uu+
94%	BB&T	BBT	51.98	+	+	uo
22%	BECTON DICKINSON	BDX	250.72	o	-	u+
72%	BERKSHIRE HATHAWAY	BRKb	207.91	+	+	u+
11%	BIOGEN	BIIB.O	225.76	-	-	uo
56%	BLACKROCK	BLK	434.21	o	uu+	uu+
67%	BOEING	BA	373.18	+	+	-
61%	BOOKING HOLDINGS	BKNG.O	1'988.75	+	uo	uu+
0%	BOSTON SCIENTIFIC	BSX	37.97	d-	-	-
100%	BRISTOL MYERS SQUIB	BMY	51.56	+	+	+
33%	BROADCOM	AVGO.O	281.66	-	uo	u+
50%	CAMECO (NYS)	CCJ	9.29	-	+	-
89%	CATERPILLAR	CAT	128.38	uu+	uu+	uu+
100%	CELGENE	CELG.O	100.39	+	+	+
22%	CHARLES SCHWAB	SCHW.K	37.72	uo	-	uu+
100%	CHARTER COMMS.CL.A	CHTR.O	422.96	+	+	+
22%	CHEVRON	CVX	116.18	uo	-	uu+
33%	CHUBB	CB	155.44	+	dd-	dd-

SCORE	COMPANY	RIC	PRICE	LT	MT	ST
11%	CIGNA	CI	151.58	-	-	uu+
0%	CISCO SYSTEMS	CSCO.O	46.05	-	-	-
100%	CITIGROUP	C	70.24	+	+	uu+
50%	CME GROUP	CME.O	212.35	+	do	dd-
33%	COCA COLA	KO	53.30	+	-	d-
11%	COGNIZANT TECH.SLTI	CTSH.O	60.38	-	-	u+
11%	COLGATE-PALM.	CL	69.41	do	-	d-
61%	COMCAST A	CMCSA.O	45.23	+	o	uu+
61%	CONOCOPHILLIPS	COP	56.13	-	uu+	uu+
11%	CONSTELLATION BRAN	STZ	192.97	o	-	-
83%	COSTCO WHOLESALE	COST.O	297.52	+	+	+
11%	CROWN CASTLE INTL.	CCI	136.13	do	-	-
67%	CSX	CSX.O	68.56	-	u+	uu+
89%	CVS HEALTH	CVS	62.99	+	+	uu+
22%	DANAHER	DHR	138.80	do	-	-
83%	DEERE	DE	168.93	+	+	+
0%	DELTA AIR LINES	DAL	52.99	-	-	-
94%	DOLLAR GENERAL	DG	161.21	+	+	+
94%	DOMINION ENERGY	D	81.24	+	+	+
33%	DOVER	DOV	95.91	uo	uo	uo
67%	DOW CHEMICAL	DOW	46.82	-	+	uu+
72%	DUKE ENERGY	DUK	95.13	+	+	dd-
61%	EATON	ETN	80.86	uu+	uo	uu+
22%	EBAY	EBAY.O	38.36	o	-	uu+
17%	ECOLAB	ECL	194.01	uo	-	uo
83%	EDWARDS LIFESCIENCE	EW	226.61	+	+	+
33%	ELECTRONIC ARTS	EA.O	93.88	o	uo	uo
17%	ELI LILLY	LLY	107.90	-	o	-
100%	EMERSON ELECTRIC	EMR	67.21	u+	+	uu+
6%	EOG RES.	EOG	68.19	-	-	uo
83%	EQUINIX REIT	EQIX.O	567.50	+	+	dd-
33%	ESTEE LAUDER COS.'A'	EL	192.83	+	d-	dd-
33%	EXELON	EXC	47.11	dd-	+	dd-
11%	EXXON MOBIL	XOM	69.18	-	-	uu+
28%	FACEBOOK CLASS A	FB.O	183.28	o	-	uu+
11%	FEDEX	FDX	146.78	-	-	u+
50%	FIDELITY NAT.INFO.SV	FIS	132.74	+	-	uu+
83%	FISERV	FISV.O	106.02	+	u+	+
22%	FORD MOTOR	F	8.82	o	-	uu+
33%	FORTIVE	FTV	67.96	-	uo	uu+
33%	GENERAL DYNAMICS	GD	179.12	u+	-	uu+
22%	GENERAL ELECTRIC	GE	8.72	o	-	uu+
33%	GENERAL MILLS	GIS	54.01	+	dd-	dd-
17%	GENERAL MOTORS	GM	35.50	uo	-	uo
61%	GILEAD SCIENCES	GILD.O	64.51	uo	uu+	uu+
33%	GOLDMAN SACHS GP.	GS	205.82	u+	-	uu+
11%	HCA HEALTHCARE	HCA	119.43	-	-	u+
83%	HOME DEPOT	HD	234.18	+	u+	u+
6%	HONEYWELL INTL.	HON	162.98	-	-	uo
0%	HP	HPQ	16.54	-	-	-

S&P 200 stocks – listed alphabetically (Humana-Z)

SCORE	COMPANY	RIC	PRICE	LT	MT	ST
11%	HUMANA	HUM	264.00	-	-	uu+
100%	ILLINOIS TOOL WORKS	ITW	153.94	u+	uu+	uu+
67%	ILLUMINA	ILMN.O	310.31	-	+	+
83%	INTEL	INTC.O	51.64	+	+	u+
83%	INTERCONTINENTAL EX	ICE	93.50	+	+	+
72%	INTERNATIONAL BUS.M	IBM	142.04	+	+	uo
28%	INTUIT	INTU.O	269.06	o	-	+
39%	INTUITIVE SURGICAL	ISRG.O	518.88	do	do	-
6%	IQVIA HOLDINGS	IQV	146.36	d-	-	uo
67%	JOHNSON & JOHNSON	JNJ	130.72	-	+	+
39%	JOHNSON CONTROLS I	JCI	42.24	+	-	uo
100%	JP MORGAN CHASE & C	JPM	116.45	+	+	uu+
11%	KIMBERLY-CLARK	KMB	135.10	do	dd-	dd-
11%	KINDER MORGAN	KMI	20.14	o	-	-
11%	KRAFT HEINZ	KHC.O	27.32	-	-	uu+
100%	LAM RESEARCH	LRCX.O	236.28	+	+	uu+
72%	LINDE	LIN	192.53	u+	uu+	uu+
56%	LOCKHEED MARTIN	LMT	382.61	+	o	uo
67%	LOWE'S COMPANIES	LOW	110.67	+	do	u+
100%	LYONDELLBASELL IND	LYB	87.37	+	+	uu+
94%	MARATHON PETROLEU	MPC	63.14	+	+	+
17%	MARRIOTT INTL.'A'	MAR.O	120.10	uo	-	uo
6%	MARSH & MCLENNAN	MMC	97.12	d-	-	uo
83%	MASTERCARD	MA	276.38	u+	uu+	+
22%	MCDONALDS	MCD	208.38	do	-	dd-
61%	MEDTRONIC	MDT	107.57	+	o	uo
72%	MERCK & COMPANY	MRK	84.69	+	u+	+
22%	METLIFE	MET	45.75	uo	-	uo
44%	MICRON TECHNOLOGY	MU.O	44.86	+	-	uu+
83%	MICROSOFT	MSFT.O	139.55	+	uu+	uu+
22%	MONDELEZ INTERNATI	MDLZ.O	54.22	do	dd-	dd-
11%	MONSTER BEVERAGE	MNST.O	56.55	-	-	uo
83%	MOODY'S	MCO	214.47	+	uu+	+
44%	MORGAN STANLEY	MS	42.25	o	uo	uu+
50%	NETFLIX	NFLX.O	285.53	-	uu+	+
72%	NEXTERA ENERGY	NEE	228.90	+	+	do
100%	NIKE 'B'	NKE	94.88	+	+	+
67%	NORFOLK SOUTHERN	NSC	178.54	-	uu+	uu+
50%	NORTHROP GRUMMAN	NOC	366.42	+	o	-
100%	NVIDIA	NVDA.O	186.53	+	+	+
89%	O REILLY AUTOMOTIVE	ORLY.O	401.39	+	u+	uu+
0%	OCCIDENTAL PTL.	OXY	40.51	-	-	-
11%	ONEOK	OKE	69.14	do	-	-
83%	ORACLE	ORCL.K	56.46	u+	+	+
89%	PAYCHEX	PAYX.O	84.70	uu+	+	+
11%	PAYPAL HOLDINGS	PYPL.O	101.75	-	-	uu+
100%	PEPSICO	PEP.O	137.45	+	+	+
67%	PFIZER	PFE	36.30	-	uu+	u+
61%	PHILIP MORRIS INTL.	PM	78.03	o	u+	+
83%	PHILLIPS 66	PSX	106.65	+	+	uu+

SCORE	COMPANY	RIC	PRICE	LT	MT	ST
100%	PNC FINL.SVS.GP.	PNC	140.52	+	+	+
33%	PROCTER & GAMBLE	PG	120.05	+	dd-	d-
6%	PROGRESSIVE OHIO	PGR	75.71	-	-	uo
83%	PROLOGIS	PLD	86.26	+	+	+
78%	PRUDENTIAL FINL.	PRU	89.34	uo	u+	uu+
83%	PUB.SER.ENTER.GP.	PEG	61.85	+	+	do
28%	PUBLIC STORAGE	PSA	245.33	+	-	do
61%	QUALCOMM	QCOM.O	76.30	+	o	u+
100%	RAYTHEON 'B'	RTN	199.38	+	+	uu+
78%	REGENCY CENTERS	REG.O	68.14	+	+	do
78%	REGENERON PHARMS.	REGN.O	305.44	uo	uu+	+
0%	ROPER TECHNOLOGIES	ROP	338.70	-	-	-
83%	ROSS STORES	ROST.O	111.40	+	+	+
50%	S&P GLOBAL	SPGI.K	251.37	+	-	u+
28%	SALESFORCE.COM	CRM	149.37	-	uo	uu+
22%	SCHLUMBERGER	SLB	32.57	uo	-	uu+
72%	SEMPRA EN.	SRE	145.43	+	+	do
78%	SHERWIN-WILLIAMS	SHW	550.35	+	+	+
17%	SIMON PROPERTY GRO	SPG	148.65	-	o	-
67%	SOUTHERN	SO	60.92	+	+	dd-
94%	SOUTHWEST AIRLINES	LUV	54.03	+	+	uu+
33%	STARBUCKS	SBUX.O	86.62	o	-	uu+
39%	STRYKER	SYK	212.66	+	-	uo
94%	SYSCO	SYT	78.99	+	+	uu+
100%	TARGET	TGT	111.15	+	+	+
22%	TE CONNECTIVITY	TEL	90.42	o	-	uu+
83%	TEXAS INSTRUMENTS	TXN.O	129.75	+	+	+
11%	TRAVELERS COS.	TRV	143.11	o	-	-
100%	TJX	TJX	58.12	+	+	+
28%	TRANSOCEAN	RIG	4.64	-	uo	uu+
11%	UNION PACIFIC	UNP	159.55	-	-	uu+
39%	UNITED PARCEL SER.'B'	UPS	115.87	+	-	uo
100%	UNITED TECHNOLOGIE	UTX	135.92	+	+	uu+
11%	UNITEDHEALTH GROU	UNH	220.59	-	-	u+
28%	US BANCORP	USB	53.26	do	-	uo
100%	V F	VFC	90.94	+	+	+
100%	VALERO ENERGY	VLO	88.53	+	+	uu+
72%	VERIZON COMMUNICA'	VZ	59.60	+	+	dd-
17%	VERTEX PHARMS.	VRTX.O	173.59	-	-	+
83%	VISA 'A'	V	177.36	u+	uu+	+
67%	WALGREENS BOOTS AL	WBA.O	53.67	uo	uu+	uu+
78%	WALMART	WMT	119.17	+	+	u+
6%	WALT DISNEY	DIS	129.70	-	-	o
56%	WASTE MANAGEMENT	WM	116.15	u+	uo	+
94%	WELLS FARGO & CO	WFC	49.27	+	+	uu+
67%	WELLTOWER	WELL.K	91.79	+	+	+
22%	WILLIAMS	WMB	23.12	-	uo	uo
11%	XILINX	XLNX.O	95.93	-	-	u+
22%	YUM! BRANDS	YUM	112.82	+	-	dd-
78%	ZOETIS	ZTS	126.59	+	+	+

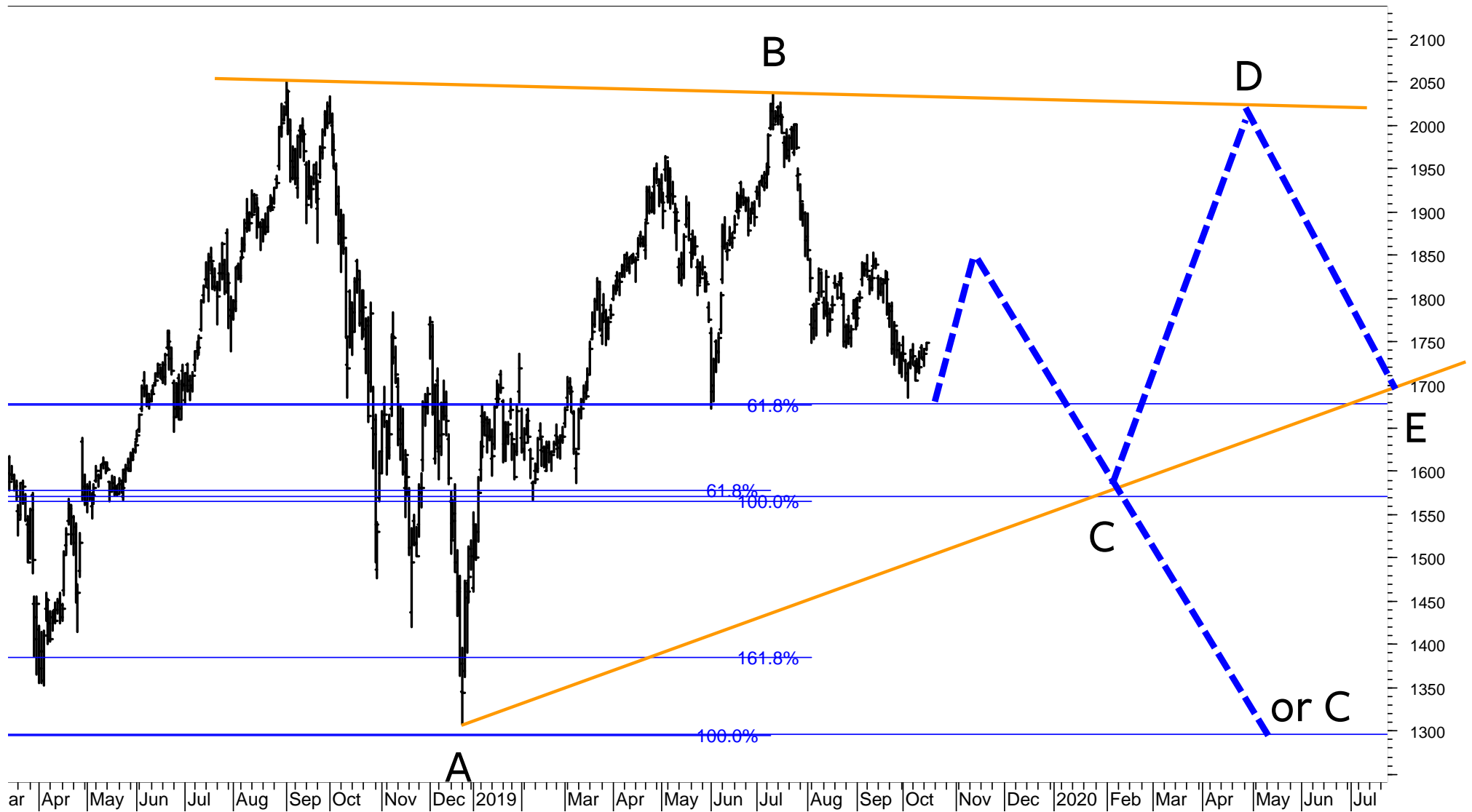
Dow Jones 30 Industrial Index constituent stocks

SCORE	COMPANY	RIC	PRICE	LT	MT	ST	COMMENT	DATE BOUGHT	PRICE BOUGHT	PROFIT or LOSS
11%	3M	MMM	160.51	-	-	uu+	Must clear 173 to signal 187 or 209.			
11%	AMERICAN EXPRESS	AXP	116.39	-	-	uo	Next support is 109. Resistance is at 118 and 121.50.			
100%	APPLE	AAPL.O	235.87	+	+	+	Uptrend re-accelerating with resistance at 244 / 251.			
67%	BOEING	BA	373.18	+	+	-	Sell signal to be triggered if 367 and 361 is broken.	10.09.2019	358.80	4.01%
89%	CATERPILLAR	CAT	128.38	uu+	uu+	uu+	Will have to break above 132 and 137 / 140 to signal 153 or 175.			
22%	CHEVRON	CVX	116.18	uo	-	uu+				
0%	CISCO SYSTEMS	CSCO.O	46.05	-	-	-				
33%	COCA COLA	KO	53.30	+	-	d-	Sell signal to be triggered if 52.50 is broken.			
67%	DOW CHEMICAL	DOW	46.82	-	+	uu+	Resistance is at 48 and 50.			
11%	EXXON MOBIL	XOM	69.18	-	-	uu+	Must rise above 70 to signal 72 or 75.			
33%	GOLDMAN SACHS GP.	GS	205.82	u+	-	uu+	Must rise above 212 to signal 220 / 222 or 235 / 240.			
83%	HOME DEPOT	HD	234.18	+	u+	u+	Next sell signal to be triggered if 222 is broken.			
83%	INTEL	INTC.O	51.64	+	+	u+				
72%	INTERNATIONAL BUS.M	IBM	142.04	+	+	uo	Sell signals to be triggered if the supports at 137 and 132 / 129 are broken.			
67%	JOHNSON & JOHNSON	JNJ	130.72	-	+	+	Major resistance is at 135.50.			
100%	JP MORGAN CHASE & C	JPM	116.45	+	+	uu+	ADD to the position if 120 is broken.	10.09.2019	115.40	0.91%
22%	MCDONALDS	MCD	208.38	do	-	dd-	Sell signals were triggered with the break of 215.50 and 212.50. Sell again <205, 199.			
72%	MERCK & COMPANY	MRK	84.69	+	u+	+				
83%	MICROSOFT	MSFT.O	139.55	+	uu+	uu+	Will have to rise above 141 to signal 144 or 149. Sell if 135 and 131 is broken.			
100%	NIKE 'B'	NKE	94.88	+	+	+	Next resistance levels are 96.50 and 98.			
67%	PFIZER	PFE	36.30	-	uu+	u+	Must rise above 37 to signal 38.50 or 41.			
33%	PROCTER & GAMBLE	PG	120.05	+	dd-	d-	Next sell signal to be triggered if 118.50 is broken. Lower support is at 115.50 and 110.50.			
11%	TRAVELERS COS.	TRV	143.11	o	-	-	Next sell signal to be triggered if 139 is broken.			
100%	UNITED TECHNOLOGIE	UTX	135.92	+	+	uu+	Would have to break long-term resistance at 139.50 to signal 144 / 146 or 152 / 156.			
11%	UNITEDHEALTH GROU	UNH	220.59	-	-	u+				
72%	VERIZON COMMUNICA	VZ	59.60	+	+	dd-				
83%	VISA 'A'	V	177.36	u+	uu+	+	Next sell signal if 168 is broken.			
67%	WALGREENS BOOTS AL	WBA.O	53.67	uo	uu+	uu+				
78%	WALMART	WMT	119.17	+	+	u+	Sell signals to be triggered if 117, 114, 110.50 and 104 are broken.			
6%	WALT DISNEY	DIS	129.70	-	-	o	Major support is at 127 and 122.			
55.00%	Average Score for all 30 stocks									

The Total Score for all 30 constituent stocks in the Dow Jones Industrial Index has recovered from 38% to 55%. This means the Total Score for the Dow Jones Industrial Index has shifted from negative to NEUTRAL.

AMAZON – daily chart

Amazon managed to hold above support at 1680.
The rebound, which I was looking for last week, is likely to have started.



APPLE – daily chart

Apple is reaching the major resistance at 245.
A break through this key level would signal more strength to 290.



PROCTER & GAMBLE – hourly chart (re-printed from 8.10.2019)

Last week I forecast that P&G has completed a Wedge.
A failure to break 124 and a fall below 121 would signal more weakness to 119.



PROCTER & GAMBLE – hourly chart

Procter & Gamble has followed my bearish forecast and broke below 121. Clearly, the major downtrend would be signaled / confirmed if 121 / 119 and 116.50 is broken. As long as 119 is not broken, I see a 30% chance of Wave 5 still taking the stock to another new high at 126.



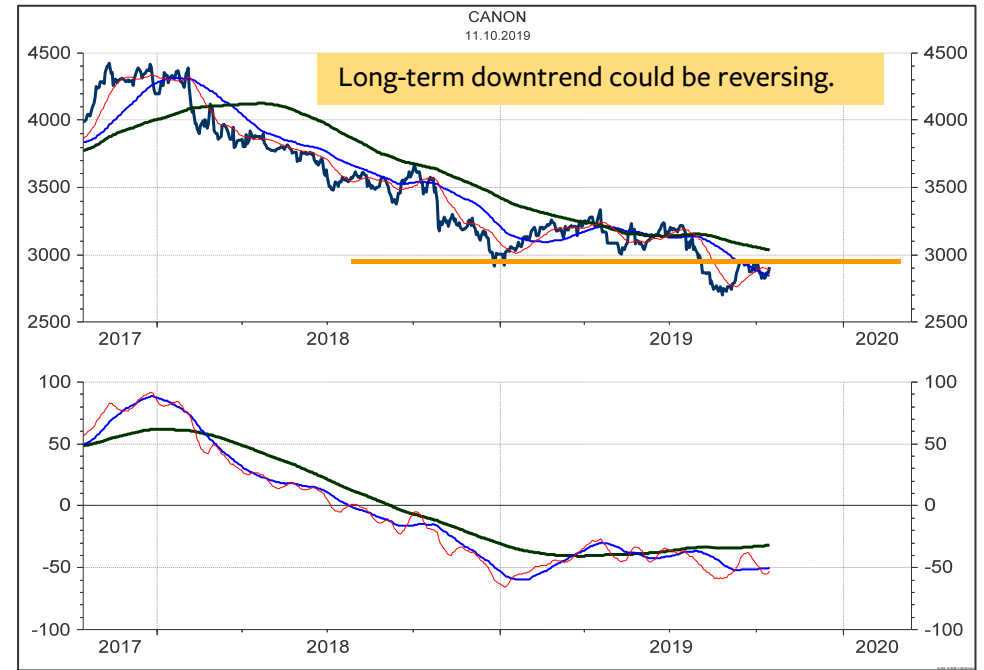
JAPAC 100 stocks – listed according to the Score (range from 100% to 0%, 40%-60% is neutral)

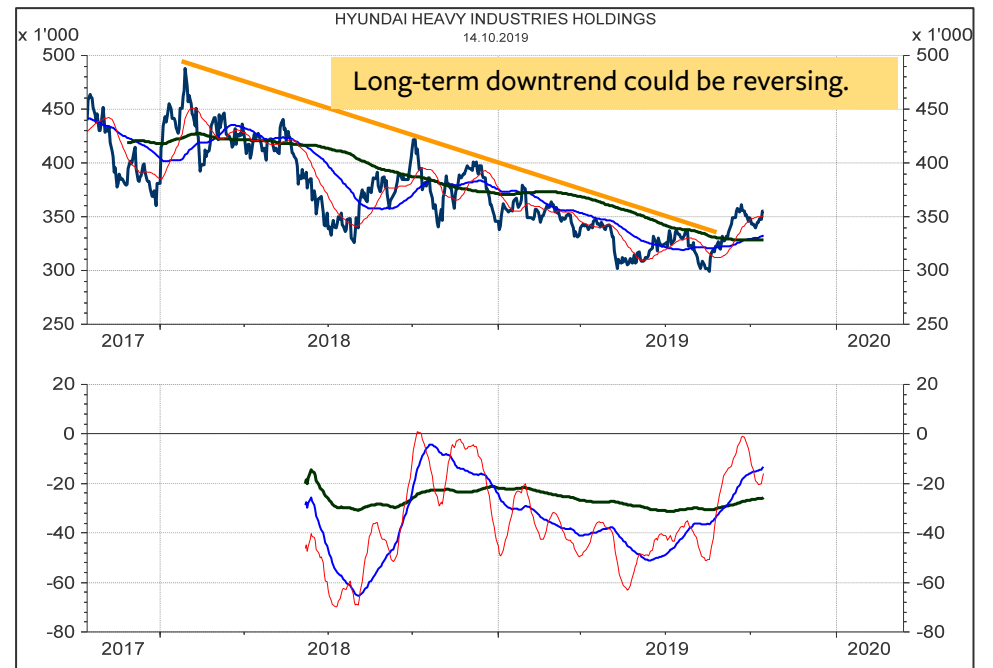
The Total Score for all 100 stocks is at 56%. This is within the **NEUTRAL** range. 12 stocks have the maximum score of 100%, which means they are above all 6 moving averages and their short-term, medium-term and long-term momentum indicators are rising. These are stocks to hold or to add to positions.

On the next 2 pages I am looking at 8 stocks, which have a wide following or which have bottomed and could signal a new uptrend.

SCORE	COMPANY	RIC	PRICE	LT	MT	ST
100%	BHARTI AIRTEL/d	BRTI.NS	393.55	+	uu+	uu+
100%	GS HOLDINGS/d	078930.KS	50'600.00	u+	+	uu+
100%	HYUNDAI HEAVY /d	267250.KS	355'500.00	+	u+	uu+
100%	KALBE FARMA TB/d	KLBF.JK	1'645.00	+	u+	uu+
100%	KDDI/d	9433.T	2'970.00	+	+	+
100%	NTT DOCOMO/d	9437.T	2'865.50	+	+	+
100%	NTT/d	9432.T	5'418.00	+	+	+
100%	SAMSUNG BIOLOG/d	207940.KS	327'000.00	+	+	+
100%	SAMSUNG ELEC-/d	005935.KS	40'550.00	+	+	uu+
100%	SAMSUNG ELECTR/d	005930.KS	50'100.00	+	+	uu+
100%	S-OIL/d	010950.KS	99'100.00	+	+	u+
100%	TAIWAN SEMICON/d	2330.TW	293.50	+	+	+
94%	HONDA MOTOR/d	7267.T	2'899.50	+	+	uu+
94%	SAMSUNG EL-MEC/d	009150.KS	110'500.00	+	+	+
89%	AMOREPACIFIC/d	090430.KS	151'000.00	u+	+	+
89%	BANK OF CHINA/d	3988.HK	3.1500	u+	u+	uu+
89%	HANA FINANCIAL/d	086790.KS	35'150.00	u+	+	uu+
89%	KAO CORPORATIO/d	4452.T	8'324.00	uu+	+	uu+
89%	KB FGI/d	105560.KS	42'600.00	u+	uu+	uu+
89%	KOREA SHIPBUIL/d	009540.KS	127'000.00	+	+	uu+
89%	KOREA ZINC/d	010130.KS	442'500.00	uo	uu+	uu+
89%	LG ELECTRONICS/d	066570.KS	69'400.00	+	+	+
89%	LOTTE CHEMICAL/d	011170.KS	243'500.00	u+	u+	uu+
89%	POSCO/d	005490.KS	227'500.00	u+	uu+	uu+
89%	RECRUIT HOLDIN/d	6098.T	3'465.00	u+	+	+
89%	SAMSUNG C&T/d	028260.KS	92'100.00	uo	u+	uu+
89%	SAMSUNG HEAVY/d	010140.KS	8'060.00	u+	+	uu+
89%	SK INNOVATION/d	096770.KS	163'500.00	u+	uu+	uu+
83%	CENTRAL JAPAN /d	9022.T	22'810.00	+	+	+
83%	RELIANCE/d	RELI.NS	1'366.45	+	+	+
83%	SHIN-ETSU CHEM/d	4063.T	12'000.00	+	u+	uu+
83%	TOYOTA MOTOR C/d	7203.T	7'385.00	+	uu+	uu+
78%	CELLTRION/d	068270.KS	183'000.00	o	+	+
78%	DB INSURANCE/d	005830.KS	53'700.00	uo	u+	uu+
78%	KANGWON LAND/d	035250.KS	30'150.00	uo	u+	uu+
78%	LG DISPLAY/d	034220.KS	14'200.00	uo	uu+	uu+
78%	LG UPLUS/d	032640.KS	14'000.00	uo	+	uu+
78%	SAMSUNG LIFE/d	032830.KS	70'500.00	o	uu+	uu+
78%	SHINHAN FINANC/d	055550.KS	42'500.00	o	uu+	uu+
78%	SK HOLDINGS/d	034730.KS	235'000.00	o	+	+
72%	CELLTRION HEAL/d	091990.KQ	54'600.00	do	+	+
72%	CHAROEN POKPHA/d	CPIN.JK	5'600.00	u+	+	uu+
72%	FANUC LTD/d	6954.T	20'025.00	+	u+	-
72%	JAPAN TOBACCO/d	2914.T	2'395.50	uo	+	u+
72%	MIRAE ASSET DW/d	006800.KS	7'350.00	o	uu+	uu+
72%	NAVER/d	035420.KS	151'000.00	+	+	uo
72%	TAKEDA PHARM/d	4502.T	3'786.00	o	u+	uo
67%	CANON INC/d	7751.T	2'908.50	o	uu+	uo
67%	HANMI PHARM/d	128940.KS	292'000.00	-	+	+
67%	MIZUHO FINANCI/d	8411.T	162.10	+	do	-

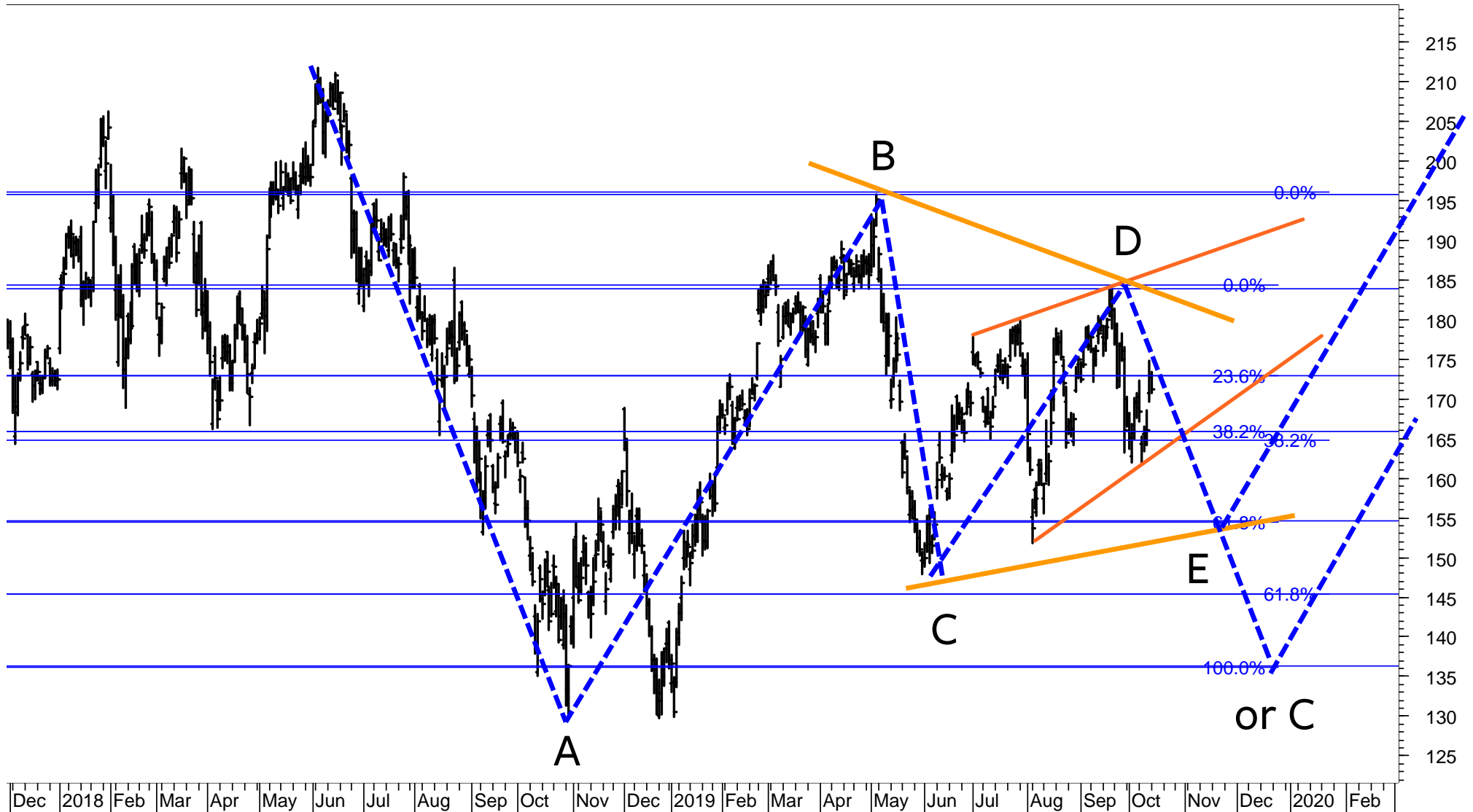
SCORE	COMPANY	RIC	PRICE	LT	MT	ST
61%	CNOOC/d	0883.HK	11.80	-	uu+	uu+
61%	HYUNDAI ENG&CO/d	000720.KS	45'200.00	-	+	uo
56%	KT G/d	033780.KS	103'000.00	+	+	-
56%	LG HOUSEHOLD/d	051900.KS	1'289'000.00	do	+	-
56%	mitsub UFJ FG/d	8306.T	543.20	+	o	uo
56%	SONY CORP/d	6758.T	6'230.00	+	o	uo
50%	ALIBABA GRP AD/d	BABA.K	172.94	u+	uo	uu+
50%	E-MART/d	139480.KS	115'000.00	-	u+	uu+
50%	HANKOOK TIR TE/d	161390.KS	31'750.00	-	+	-
50%	IBK/d	024110.KS	12'650.00	uo	+	uo
50%	KAKAO/d	035720.KS	133'500.00	+	o	-
50%	SAMSUNG SDS/d	018260.KS	193'000.00	-	uu+	uu+
50%	SK HYNIX/d	000660.KS	81'200.00	+	do	-
50%	SMFG/d	8316.T	3'721.00	uo	uo	uo
33%	HYUNDAI MOBIS/d	012330.KS	243'500.00	+	-	-
28%	HANON SYSTEMS/d	018880.KS	11'950.00	uo	uo	-
28%	INFOSYS LTD/d	INFY.NS	771.30	+	-	o
28%	NCISOFT/d	036570.KS	517'000.00	+	-	o
28%	NETMARBLE/d	251270.KS	92'300.00	uo	o	-
28%	SAMSUNG FIRE I/d	000810.KS	219'500.00	-	uo	uu+
22%	HYUNDAI STEEL/d	004020.KS	36'800.00	-	uo	uo
22%	JAPAN POST HLD/d	6178.T	994.00	-	o	uo
22%	LG CORP/d	003550.KS	69'200.00	uo	-	uu+
22%	LOTTE SHOPPING/d	023530.KS	126'500.00	-	o	uo
22%	NISSAN MOTOR C/d	7201.T	680.50	-	uo	uo
22%	SK TELECOM/d	017670.KS	237'500.00	-	uo	uo
22%	TELKOM INDONES/d	TLKM.JK	4'170.00	+	-	-
22%	TENCENT/d	0700.HK	329.20	o	-	uu+
22%	WOONGJIN COWAY/d	021240.KS	85'200.00	do	dd-	dd-
17%	GUDANG GARAM T/d	GGRM.JK	54'125.00	-	-	u+
17%	H M SAMPOERNA/d	HMSP.JK	2'280.00	-	-	u+
17%	KOREA ELEC POW/d	015760.KS	25'800.00	-	uo	-
17%	SEMEN INDONESIA/d	SMGR.JK	12'350.00	-	-	uu+
11%	FAST RETAILING/d	9983.T	65'450.00	-	-	uu+
11%	HYUNDAI GLOVIS/d	086280.KS	150'000.00	o	-	-
11%	HYUNDAI MOTOR/d	005380.KS	122'500.00	o	-	-
11%	INDAH KIAT PUL/d	INKP.JK	6'675.00	-	-	uu+
11%	INDOCEMENT T P/d	INTP.JK	19'500.00	-	-	uu+
11%	LG CHEM/d	051910.KS	304'000.00	-	-	uu+
11%	mitsubishi COR/d	8058.T	2'694.50	-	-	uu+
11%	SAMSUNG SDI/d	006400.KS	220'500.00	-	-	uu+
11%	UNITED TRACTOR/d	UNTR.JK	20'925.00	-	-	uu+
6%	ASTRA INTL TBK/d	ASII.JK	6'375.00	-	-	uo
6%	BANK BNI TBK/d	BBNI.JK	6'925.00	-	-	uo
6%	BANK MANDIRI T/d	BMRI.JK	6'525.00	-	-	uo
6%	BANK RAKYAT IN/d	BBRI.JK	3'910.00	-	-	uo
6%	SOFTBANK GROUP/d	9984.T	4'258.00	-	-	uo
6%	TATA CONSULT/d	TCS.NS	2'041.00	-	-	o
0%	KIA MOTORS/d	000270.KS	40'700.00	dd-	-	-
0%	UNILEVER INDON/d	UNVR.JK	44'700.00	-	-	-





ALIBABA

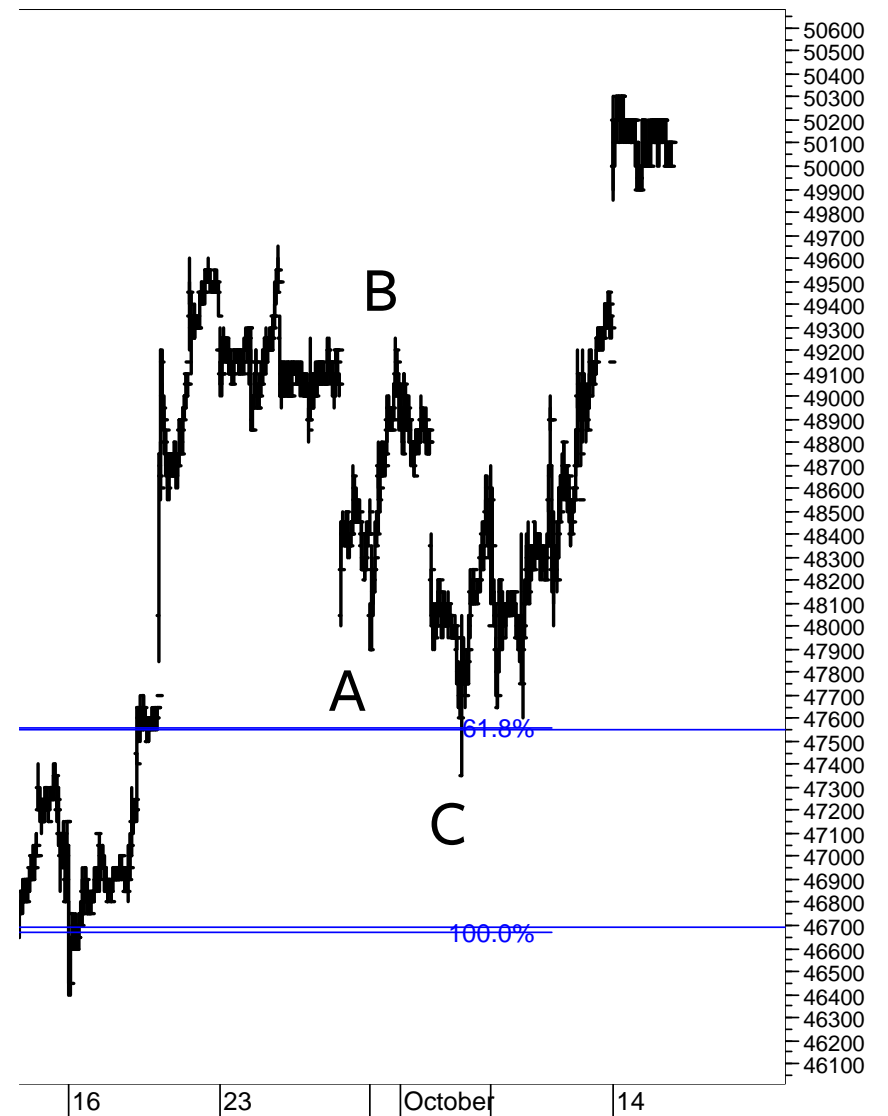
Alibaba has recovered to 175. It remains in Wave E of the Horizontal Triangle, which originated in June 2018. It is likely to trace out the final Wave E down to supports at 165 or 155. The present Triangle would be negated if supports at 145 and 135 are broken. Presently, I do not have a recommendation for Alibaba.



SAMSUNG ELECTRONICS - daily chart (left) and 30-minute chart (right)

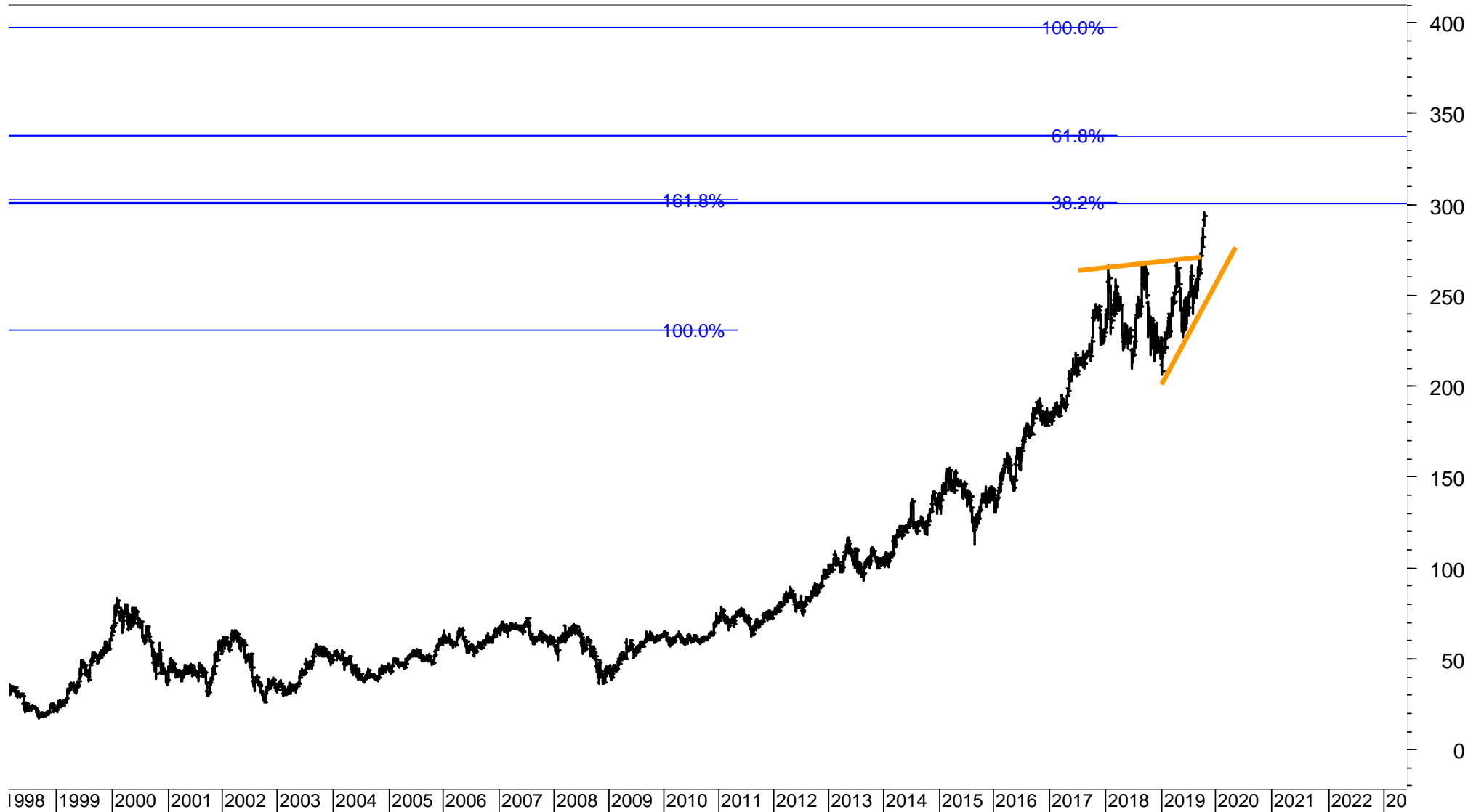
Last week I stated: „This consolidation appears as a corrective A-B-C (at right). This structure implies that Samsung could soon break the next resistance range 49k to 50.5k and rise towards 54k.“

Samsung has resumed the uptrend to test resistance at 50.25k, a break of which could activate the next target at 54k. I am still long Samsung from its BUY signal, which it triggered with the break of the resistance at 47.2k / 47.8k.



TAIWAN SEMICONDUCTOR –weekly chart

Given the length and the size of the TRIANGLE, I believe the stock has more upside potential once 300 / 305 is broken. It could rise to 340 or 400.



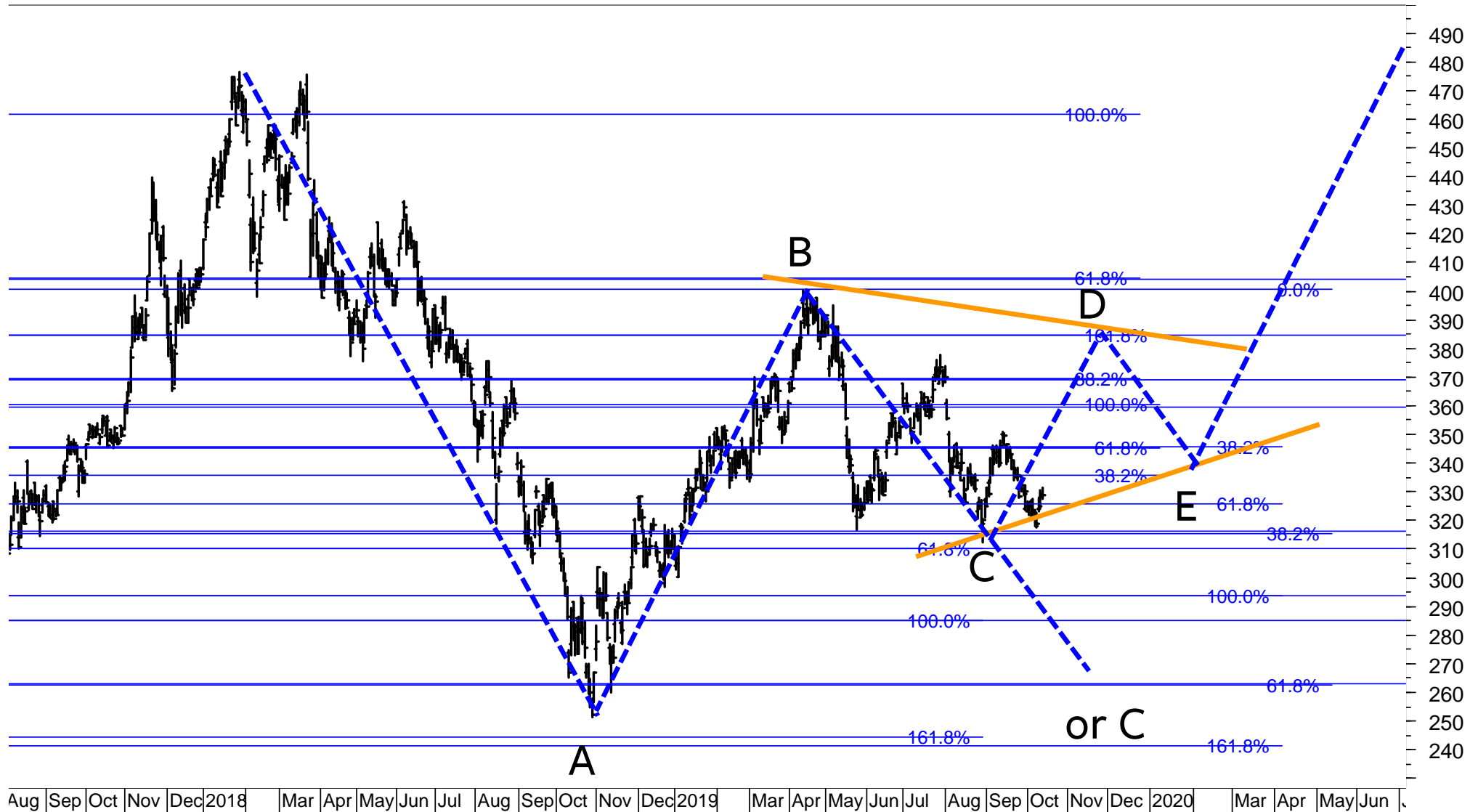
TENCENT

Tencent is bouncing off the major support at 315.

It is likely to continue forming the Horizontal Triangle, which originated in January 2018.

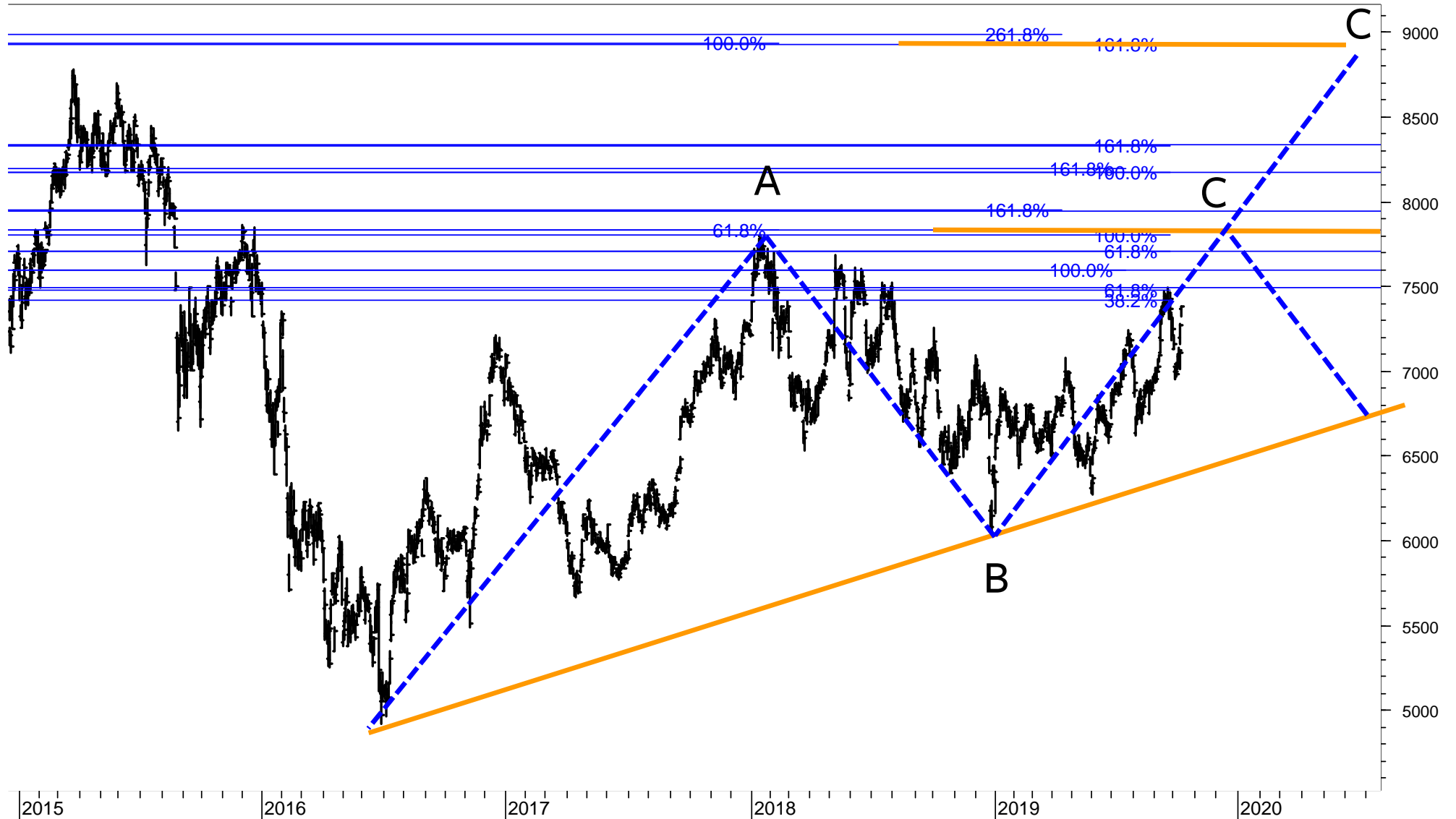
The Triangle would be negated if 315 / 310 is clearly broken. Then, Tencent could fall to 295 / 285 or 265 / 260.

Presently, I do not have a position in Tencent.



TOYOTA

Toyota has turned up again. It did not follow my projected downleg, which I labeled as Wave E of the triangle from 2015. This is causing an adjustment of the wave labeling. I expect Toyota to rise to 7800. At this level the rise from December 2018 is 0.618 times the length of Wave A. A break of 7850 would signal higher targets with wave equality of C equals A at 8900.



Disclaimer

Copyright © 2018 and 2019; FinChartOutlook GmbH, Rolf Bertschi, all rights reserved.

This Publication is designed for sophisticated money managers who are aware of the risk in securities investments and market forecasting. The analysis herein is based both on technical and cyclic readings and the recommendations represent the opinion of the Publisher, FinChartOutlook GmbH. Past performance does not imply or guarantee profitable results in the future. Before making specific investments, further investigation is recommended. Although the information contained in this Publication has been derived from sources which are believed to be reliable, they are not always necessarily complete and cannot be guaranteed. Neither the Publisher, FinChartOutlook GmbH, nor any of its employees, affiliates or subsidiaries shall have any liability for any loss, harm or other detriment which has been sustained by any natural person or entity that has relied on the information contained in this Publication. Any person or entity who does rely on any information contained in this Publication does so at his/her own risk and by doing so assumes all liability for any such loss, harm or other detriment. Employees of the Publisher may at times have positions in the securities referred to in this Publication and may make purchases or sales of these securities while the Publication is in circulation. An advisor / client relationship is not created by the distribution or delivery of this publication.

The information published and opinions expressed are provided by FinChartOutlook GmbH for personal use and for informational purposes only. The information is not intended to provide specific financial, investment, tax, legal or accounting advice for you, and is not intended to be relied upon in that regards. You should not act or rely on the information without professional assistance. Non information published in this Publication constitutes an offer or recommendation, to buy or sell any investment instruments, to effect any transactions, or to conclude any legal act of any kind whatsoever. FinChartOutlook GmbH disclaims, without intention, all liability for any loss or damage of any kind, including any direct, indirect or consequential damages, which might be incurred through the use of any information in this presentation. The entire content of this paper is subject to copyright with all rights reserved. You may save or print out a hard copy, provided that you do not remove any copyright or other proprietary notices. All property rights shall remain with FinChartOutlook GmbH. The content of this Publication may not be reproduced (in whole or in part), transmitted (by electronic means or otherwise), modified, linked into or used for any public or commercial purpose without the prior written permission of Rolf P. Bertschi, FinChartOutlook GmbH.

Sources

The charts in this publication are from Metastock and Datastream from Thomson Reuters Equis. All indicators and analyses are by Rolf Bertschi.

Explanations

For a more detailed explanation of the Trend and Momentum Models applied in this Chart Outlook, please see

www.chartoutlook.com

www.rolfbertschi.ch

E-Mail

rolf.bertschi@chartoutlook.ch

FinChartOutlook GmbH, Rolf P. Bertschi, Dörflistrasse 17, 8903 Birmensdorf ZH, Switzerland

Disclaimer

Copyright © 2018 and 2019; FinChartOutlook GmbH, Rolf Bertschi, all rights reserved.

This Publication is designed for sophisticated money managers who are aware of the risk in securities investments and market forecasting. The analysis herein is based both on technical and cyclic readings and the recommendations represent the opinion of the Publisher, FinChartOutlook GmbH. Past performance does not imply or guarantee profitable results in the future. Before making specific investments, further investigation is recommended. Although the information contained in this Publication has been derived from sources which are believed to be reliable, they are not always necessarily complete and cannot be guaranteed. Neither the Publisher, FinChartOutlook GmbH, nor any of its employees, affiliates or subsidiaries shall have any liability for any loss, harm or other detriment which has been sustained by any natural person or entity that has relied on the information contained in this Publication. Any person or entity who does rely on any information contained in this Publication does so at his/her own risk and by doing so assumes all liability for any such loss, harm or other detriment. Employees of the Publisher may at times have positions in the securities referred to in this Publication and may make purchases or sales of these securities while the Publication is in circulation. An advisor / client relationship is not created by the distribution or delivery of this publication.

The information published and opinions expressed are provided by FinChartOutlook GmbH for personal use and for informational purposes only. The information is not intended to provide specific financial, investment, tax, legal or accounting advice for you, and is not intended to be relied upon in that regards. You should not act or rely on the information without professional assistance. Non information published in this Publication constitutes an offer or recommendation, to buy or sell any investment instruments, to effect any transactions, or to conclude any legal act of any kind whatsoever. FinChartOutlook GmbH disclaims, without intention, all liability for any loss or damage of any kind, including any direct, indirect or consequential damages, which might be incurred through the use of any information in this presentation. The entire content of this paper is subject to copyright with all rights reserved. You may save or print out a hard copy, provided that you do not remove any copyright or other proprietary notices. All property rights shall remain with FinChartOutlook GmbH. The content of this Publication may not be reproduced (in whole or in part), transmitted (by electronic means or otherwise), modified, linked into or used for any public or commercial purpose without the prior written permission of Rolf P. Bertschi, FinChartOutlook GmbH.

Sources

The charts in this publication are from Metastock and Datastream from Thomson Reuters Equis. All indicators and analyses are by Rolf Bertschi.

Explanations

For a more detailed explanation of the Trend and Momentum Models applied in this Chart Outlook, please see

www.chartoutlook.com

www.rolfbertschi.ch

E-Mail

rolf.bertschi@chartoutlook.ch

FinChartOutlook GmbH, Rolf P. Bertschi, Dörflistrasse 17, 8903 Birmensdorf ZH, Switzerland