



GLOBAL CHART OUTLOOK

9th December 2019
Global Equities

Swiss SPI 200 constituent stocks – listed according to the Score (range from 100% to 0%, 40%-60% is neutral)

SCORE	COMPANY	RIC
100%	ABB LTD N	ABBN.S
100%	ADDEX THERAPEUTICS	ADDXN.S
100%	ALSO HLD AG	ALSN.S
100%	AMS	AMS.S
100%	AUTONEUM N	AUTON.S
100%	BOSSARD N	BOS.S
100%	BUCHER N	BUCN.S
100%	CALIDA HLD N	CALN.S
100%	CEMBRA MONEY BAN	CMBN.S
100%	DUFREY AG	DUFN.S
100%	EFG INT N	EFGN.S
100%	EMS-CHEMIE N	EMSN.S
100%	FISCHER N	FIN.S
100%	GEBERIT N1	GEBN.S
100%	HYPO BK LENZB N	HBLN.S
100%	IDORSIA N	IDIA.S
100%	INTERROLL N	INRN.S
100%	INTERSHOP N	ISN.S
100%	INVESTIS N	IREN.S
100%	KOMAX N	KOMN.S
100%	KUEHNE & NAGEL	KNIN.S
100%	LAFARGEHOLCIM	LHN.S
100%	LANDIS GYR	LANDI.S
100%	LASTMINUTE ORD	LMN.S
100%	METALL ZUG	METN.S
100%	O FUESSLI N	OFN.S
100%	PANALPINA WELT	PWTN.S
100%	PARGESA I	PARG.S
100%	PARTNERS GROUPAG	PGHN.S
100%	PEACH PROP	PEAN.S
100%	PHOENIX I	PM.S
100%	PLAZZA AG	PLANZ.S
100%	SCHINDLER N	SCHN.S
100%	SFS GROUP	SFSN.S
100%	SGS N	SGSN.S
100%	SIKA	SIKA.S
100%	SULZER N	SUN.S
100%	SWISS FIN&PROP	SFPN.S
100%	SWISS RE N	SRENH.S
100%	SWISSCOM N	SCMN.S
100%	SWISSQUOTE GRP N	SQN.S
100%	U-BLOX N	UBXN.S
100%	VALARTIS GROUP	VLRT.S
100%	VARIA US PROP	VARN.S
100%	VAT GROUP N	VACN.S
100%	VILLARS N	VILN.S
100%	VONTOBEL N	VONN.S
100%	WARTECK N	WARN.S
100%	ZUEBLIN N	ZUBN.S
100%	ZUR ROSE GROUP N	ROSEG.S
94%	ADECCO N	ADEN.S
94%	BELLEVUE GRP N	BBN.S
94%	CASSIOPEA N	SKIN.S

SCORE	COMPANY	RIC
94%	CICOR TECH	CICN.S
94%	CIE FIN TR I	CFT.S
94%	COLTENE N	CLTN.S
94%	COMET HOLDING	COTNE.S
94%	CONZZETA HLDNG I	CONC.S
94%	DORMAKABA HOLD	DOKA.S
94%	FORBO N	FORN.S
94%	GIVAUDAN N	GIVN.S
94%	INFICON N	IFCN.S
94%	KARDEX I	KARN.S
94%	LEM HOLDING N	LEHN.S
94%	LINDT & SP N	LISN.S
94%	LOGITECH	LOGN.S
94%	NEWRON PHARMA N	NWRN.S
94%	OC OERLIKON CORP	OERL.S
94%	SCHINDLER PS	SCHP.S
94%	SCHWEITER I	SWTQ.S
94%	STRAUMANN HLD N	STMN.S
94%	SWATCH GROUP I	UHR.S
94%	TECAN HLD N	TECN.S
94%	VIFOR PHARMA	VIFN.S
89%	AEVIS HOLDING SA	AEVS.S
89%	APG SGA	APGN.S
89%	BB BIOTECH ORD	BION.S
89%	BELIMO HOLDING N	BEAN.S
89%	ELMA N	ELMN.S
89%	FEINTOOL N	FTON.S
89%	HUBER & S N	HUBN.S
89%	JULIUS BAER N	BAER.S
89%	LINDT & SP PS	LISP.S
89%	ORIOR N	ORON.S
89%	PERFECT HOLDING	PRFN.S
89%	SWISS LIFE HLDG	SLHN.S
83%	ARYZTA AG	ARYN.S
83%	BACHEM HOLD N	BANB.S
83%	BOBST GRP N	BOBNN.S
83%	CI COM SA I	CIE.S
83%	CLARIANT N	CLN.S
83%	DAETWYL I	DAE.S
83%	GLARNER KB N	GLKBN.S
83%	HIGHL EVNT & ENT	HLEE.S
83%	MOBILEZONE HLD I	MOZN.S
83%	NOVARTIS N	NOVN.S
83%	PSP CH PRPTY N	PSPN.S
83%	RIETER N	RIEN.S
83%	ROCHE HOLDING AG	ROG.S
83%	SIG COMB GRP N	SIGNC.S
83%	ST GALLER KB N	SGKN.S
83%	WISEKEY N	WIHN.S
83%	ZUG ESTATE HLD	ZUGN.S
83%	ZURICH INSURANCE	ZURN.S
78%	ARBONIA AG	ARBNO.S
78%	BASLER KTBK PS	BSKP.S

SCORE	COMPANY	RIC
78%	EMMI N	EMMN.S
78%	EVOLVA HOLD AG	EVE.S
78%	GALENICA	GALE.S
78%	GR KTBK PS	GRKP.S
78%	JUNGFRAUBAHN N	JFN.S
78%	MEDARTIS	MEDA.S
78%	MOBIMO HLDG	MOBN.S
78%	SANTHERA PHARMA	SANN.S
78%	SIEGFRIED N	SFZN.S
78%	SWISS PRIME SITE	SPSN.S
78%	VAUDOISE VERS N	VAHN.S
78%	VETROPACK I	VET.S
72%	BASILEA PHARMA	BSLN.S
72%	BCV N	BCVN.S
72%	CREALOGIX HLDG	CLXN.S
72%	IMPLENIA N	IMPEN.S
72%	ORASCOM DEV H	ODHN.S
72%	POENINA	PNHO.S
72%	UBS GROUP N	UBSG.S
72%	ZUGER KB I	ZG.S
67%	BFW LIEGENSCH N	BLIN.S
67%	CS GROUP AG	CSGN.S
67%	MCH GROUP AG	MCHN.S
67%	ROMANDE ENERGIE	HREN.S
67%	TEMENOS N	TEMN.S
67%	ZEHNDER I	ZEHN.S
61%	ALLREAL HLD N	ALLN.S
61%	ARUNDEL AG	ARONL.S
61%	COSMO PHARM N	COPN.S
61%	DKSH N	DKSH.S
61%	GURIT I	GUR.S
61%	KUROS BIOSCIENCE	KURN.S
61%	LEONTEQ	LEON.S
61%	RICHEMONT N	CFR.S
61%	VP BANK AG	VPBN.S
56%	ADVAL TECH N	ADVN.S
56%	BURCKHARDT	BCHN.S
56%	BURKHALTER AG	BRKN.S
56%	POLYPHOR N	POLN.S
50%	BARRY CALLEBAUT	BARN.S
44%	BELL FOOD GROUP	BELL.S
44%	LONZA GRP AG N	LONN.S
44%	YPSOMED HOLDING	YPSN.S
39%	BKW N	BKWB.S
39%	GAVAZZI CARLO I	GAV.S
39%	HELVETIA HLDG	HELN.S
39%	HOCHELDORF N	HOCN.S
39%	MEIER TOBLER GRO	METG.S
39%	MOLECULAR PARTNE	MOLN.S
39%	PRIVATE EQUITY N	PEHN.S
33%	ASCAN N	ASCN.S
33%	BQ CANT DU JURA	BCJ.S
33%	BVZ HOLDING AG	BVZN.S

SCORE	COMPANY	RIC
33%	HIAG IMMOBILIEN	HIAG.S
33%	LECLANCHE N	LECN.S
33%	PERROT DUVAL H	PEDU.S
33%	RELIEF THERAPEUT	RLFB.S
33%	SENSIRION N	SENSI.S
33%	SUNRISE N	SRCG.S
28%	GAM N	GAMH.S
28%	KUDELSKI	KUD.S
28%	TAMEDIA N	TAMN.S
28%	TORNOS HOLDING N	TOHN.S
22%	ASMALLWORLD N	ASWN.S
22%	BALOISE HLD N	BALN.S
22%	BC GENEVE P	BCGE.S
22%	CHAM GROUP AG	CHAMA.S
22%	LUZERNER KB N	LUKN.S
22%	STADLER RAIL	SRAIL.S
22%	ZWAHLEN & MAYR	ZWM.S
17%	BERNER KB N	BEKN.S
17%	BLACKSTONE RES	BLS.S
17%	CPH CHEM&PAPER	CPHN.S
17%	FLUGHAFEN ZURICH	FHZN.S
17%	LALIQUE	LLQ.S
17%	MIKRON N	MIKN.S
17%	NESTLE SA	NESN.S
17%	OBSEVA SA/d	OBSV.O
17%	SCHMOLZ+BICKENB	STLN.S
17%	SOFTWAREONE N	SWON.S
17%	STARRAG N	STGN.S
17%	VALORA N	VALN.S
17%	VON ROLL I	ROL.S
17%	VZ HOLDING N	VZN.S
17%	WALLISER KTBK	WKB.S
11%	BK LINTH LLB AG	LINN.S
11%	IVF HARTMANN	VBSN.S
11%	MEYER BURGER N	MBTN.S
11%	SCHAFFNER N	SAHN.S
11%	SNB N	SNBN.S
11%	SONOVA H AG	SOON.S
11%	SPICE PRIV AG	SPCE.S
6%	ALCON N	ALCC.S
6%	KLINGELNBERG N	KLIN.S
6%	TITL BN BERG N	TIBN.S
0%	AIREIS SA	AIRE.S
0%	ALUFLEXPACK	AFPD.S
0%	BASELLAND KTBK	BLKB.S
0%	EDISUN POWER	ESUN.S
0%	GRP MINOTERIES	GMI.S
0%	LIECH LANDBK	LLBN.S
0%	MEDACTA GROUP	MOVE.S
0%	SCHLATTER N	STRN.S
0%	THURGAUER KB PS	TKBP.S
0%	VALIANT N	VATN.S

Stocks marked blue are the SMI 20 Index constituents

Swiss Performance Index 200 stocks – listed alphabetically (ABB-Bellevue)

SCORE	COMPANY	RIC	PRICE	LT	MT	ST	COMMENT	DATE BOUGHT	PRICE BOUGHT	PROFIT or LOSS
100%	ABB LTD N	ABBN.S	22.33	+	+	u+	The rise from 7th August 2019 is an irregular FLAT in which wave c is 1.618 times the length of wave a at 11.60. Long-term resistance is at 23.60. Thus, the present rally is limited to 22.60.			
100%	ADDEX THERAPEUTICS	ADXN.S	1.77	u+	uu+	uu+	BUY signal would be triggered if 1.85 is broken. Target 2.01 or 2.28.			
94%	ADECCO N	ADEN.S	62.24	+	+	+	Hold.	24.10.2019	58.10	7.13%
56%	ADVAL TECH N	ADVN.S	167.00	do	do	dd-				
89%	AEVIS HOLDING SA	AEVS.S	14.20	+	+	do				
0%	AIRESES SA	AIRE.S	1.22	d-	-	dd-				
6%	ALCON N	ALCC.S	54.95	na	-	uo	BUY signals will be triggered if 55.10 and 55.60 are broken. Target is 56.50, 58.			
61%	ALLREAL HLD N	ALLN.S	191.80	+	o	o				
100%	ALSO HLD AG	ALSN.S	162.60	+	+	+				
0%	ALUFLEXPACK	AFPD.S	20.30	na	-	d-				
100%	AMS	AMS.S	48.40	+	+	+				
89%	APG SGA	APGN.S	287.50	+	+	do	Hold.	11.09.2019	273.20	5.23%
78%	ARBONIA AG	ARBNO.S	12.32	+	do	uu+				
61%	ARUNDEL AG	ARONL.S	2.14	u+	uo	uu+				
83%	ARYZTA AG	ARYN.S	1.05	+	+	d-				
33%	ASCOM N	ASCN.S	9.97	o	o	uo				
22%	ASMALLWORLD N	ASWN.S	2.77	+	-	-				
100%	AUTONEUM N	AUTON.S	119.70	+	+	u+	Must hold above 116.50 / 114.50 or the turnaround will be aborted. Supports are 110.50, 104.50. I would sell the position if 114 is broken.	5.11.2019	118.30	1.18%
83%	BACHEM HOLD N	BANB.S	150.00	+	o	uu+	The uptrend from early October is likely to reach another new high above 155.	20.08.2019	134.60	11.44%
22%	BALOISE HLD N	BALN.S	173.90	-	uo	o	The uptrend from December 2018 appear as Expanding Wedge. A break of the support at 170 would signal 165 or a decline to 152.			
50%	BARRY CALLEBAUT	BARN.S	2'018.00	u+	-	+				
0%	BASELLAND KTBK	BLKB.S	908.00	d-	d-	dd-				
72%	BASILEA PHARMA	BSLN.S	50.65	+	+	do	Reached the long-term resistance in the long-term turnaround at 56 and entered a correction. Supports are 50.40, 47.50. Resistance is 55.30 and 56.80.			
78%	BASLER KTBK PS	BSKP.S	73.20	o	+	uo				
89%	BB BIOTECH ORD	BION.S	67.95	+	+	do	Supports are at 67.10 and 66.10.	4.11.2019	62.90	8.03%
22%	BC GENEVE P	BCGE.S	196.00	-	o	o				
72%	BCV N	BCVN.S	774.00	o	o	+				
89%	BELIMO HOLDING N	BEAN.S	6'530.00	+	+	do				
44%	BELL FOOD GROUP	BELL.S	271.00	o	+	d-	Must hold above 267 / 264 or it would signal 260 and trigger a sell signal.	20.11.2019	278.00	-2.52%
94%	BELLEVUE GRP N	BBN.S	24.50	+	+	+				

SPI Index 200 constituent stocks - alphabetically (Berner-Dorma)

SCORE	COMPANY	RIC	PRICE	LT	MT	ST	COMMENT	DATE BOUGHT	PRICE BOUGHT	PROFIT or LOSS
17%	BERNER KB N	BEKN.S	214.00	-	do	d-				
67%	BFW LIEGENSCH N	BLIN.S	44.30	+	do	d-	Must hold above 43.80 and 43.10 or the major uptrend could break.	20.11.2019	44.55	-0.56%
11%	BK LINTH LLB AG	LINN.S	476.00	do	dd-	dd-				
39%	BKW N	BKWB.S	71.20	do	-	u+				
17%	BLACKSTONE RES	BLS.S	0.95	o	-	uo				
83%	BOBST GRP N	BOBN.S	55.50	+	+	o	Must hold above 54.40 / 53.20 or a Head and Shoulder Top will be signaled.	05.11.2019	54.00	2.78%
100%	BOSSARD N	BOS.S	168.50	+	+	u+	Hold.	28.10.2019	153.15	10.02%
33%	BQ CANT DU JURA	BCJ.S	55.50	o	o	do				
100%	BUCHER N	BUCN.S	325.00	+	+	uu+	Sold with the break of 319 / 315. Watching for fresh momentum.			
56%	BURCKHARDT	BCHN.S	246.00	+	do	-	Must rise above 251 to signal 260, a break of which would signal 276 or 300.			
56%	BURKHALTER AG	BRKN.S	75.50	uo	uo	uu+	Could be turning upwards long term if 76.90 / 78.20 is broken. But, must hold above 74.70 and 73.40 or it will signal 71.30 or 68.	23.10.2019	74.00	2.03%
33%	BVZ HOLDING AG	BVZN.S	1'130.00	+	d-	d-				
100%	CALIDA HLD N	CALN.S	35.50	+	+	+	Added to the position with the break of 33.50. Resistance is at 36 and 41.	12.11.2019	32.50	9.23%
94%	CASSIOPEA N	SKIN.S	42.40	u+	+	+	BUY. Likely to test 44.70 to confirm the long-term upgrade.	09.12.2019	42.40	
100%	CEMBRA MONEY BAN	CMBN.S	111.10	+	u+	+	Must rise above 112.70 to signal 116 / 117.50 or 126.			
22%	CHAM GROUP AG	CHAMA.S	414.00	d-	uo	uo				
83%	CI COM SA I	CIE.S	2.40	u+	uu+	uu+				
94%	CICOR TECH	CICN.S	58.20	+	+	+	Uptrend remains intact unless 56.80, 54.70 is broken. Lower support 51.30.	22.11.2019	54.20	7.38%
94%	CIE FIN TR I	CFT.S	105.50	u+	u+	o				
83%	CLARIANT N	CLN.S	20.69	+	o	u+				
94%	COLTENE N	CLTN.S	87.00	+	+	+	ADD to the position if 87.10 is broken.	29.10.2019	80.40	8.21%
94%	COMET HOLDING	COTNE.S	122.10	+	+	+	The uptrend remains intact unless 118, 115.50 is broken. Lower support 111.50.	05.11.2019	98.00	24.59%
94%	CONZZETA HLDNG I	CONC.S	980.00	+	+	+	ADD to the position. The uptrend is likely to test 1005 to 1025.	4.11.2019	886.00	10.61%
61%	COSMO PHARM N	COPN.S	73.50	o	+	+				
17%	CPH CHEM&PAPER	CPHN.S	78.40	-	o	d-	BUY. Has just terminated a FLAT a-b-c at 76. Likely to resume the major uptrend.	09.12.2019	78.40	
72%	CREALOGIX HLDG	CLXN.S	95.60	+	do	+				
67%	CS GROUP AG	CSGN.S	12.99	+	+	d-	See chart.			
83%	DAETWYL I	DAE.S	178.80	+	u+	u+	Hold.	11.09.2019	165.50	8.04%
61%	DKSH N	DKSH.S	50.50	o	+	d-				
94%	DORMAKABA HOLD	DOKA.S	692.50	u+	+	u+				

SPI Index 200 constituent stocks - alphabetically (Dufry-Interroll)

SCORE	COMPANY	RIC	PRICE	LT	MT	ST	COMMENT	DATE BOUGHT	PRICE BOUGHT	PROFIT or LOSS
100%	DUFRY AG	DUFN.S	97.20	+	+	+	Hold.	15.10.2019	84.50	15.03%
0%	EDISUN POWER	ESUN.S	121.00	dd-	-	-	Sold with the break of 121.			
100%	EFG INT N	EFGN.S	6.55	u+	u+	u+	BUY. Likely to test 6.70, a break of which will signal 7.05 / 7.30 next.	09.12.2019	6.55	
89%	ELMA N	ELMN.S	440.00	+	+	o				
78%	EMMI N	EMMN.S	831.00	o	+	u+				
100%	EMS-CHEMIE N	EMSN.S	623.00	+	u+	u+	BUY. Trading range from April is likely to break upwards. Key supports 590, 580.	09.12.2019	623.00	
78%	EVOLVA HOLD AG	EVE.S	0.18	o	+	do	Hold.	14.11.2019	0.16	10.88%
89%	FEINTOOL N	FTON.S	59.80	u+	u+	uu+				
100%	FISCHER N	FIN.S	984.00	+	+	u+	Must rise above 987 to signal 998 or 1015 / 1045.	17.10.2019	917.00	7.31%
17%	FLUGHAFEN ZURICH	FHZN.S	175.20	o	d-	do	Must rise above 177 to signal 182 and, possibly, to signal 188 / 190 or 200.	12.11.2019	169.00	3.67%
94%	FORBO N	FORN.S	1'630.00	+	+	+				
78%	GALENICA	GALE.S	60.80	+	+	+				
28%	GAM N	GAMH.S	2.90	o	-	u+	Fell close to my long-term support, which I had projected at 2.65. BUY signal to be triggered if 2.99 us broken. Target 3.02 or 3.15 / 3.20.			
39%	GAVAZZI CARLO I	GAV.S	258.00	o	o	uu+				
100%	GEBERIT N1	GEBN.S	546.80	+	+	+	Hold.	29.10.2019	496.00	10.24%
94%	GIVAUDAN N	GIVN.S	2'915.00	+	+	do	Rebounding from lower support range at 2863. Could extend the wedge to 3000.	11.09.2019	2782	4.78%
83%	GLARNER KB N	GLKBN.S	32.30	+	uo	uu+				
78%	GR KTBK PS	GRKP.S	1'480.00	u+	uo	uo				
0%	GRP MINOTERIES	GMI.S	350.00	-	-	d-				
61%	GURIT I	GUR.S	1'352.00	+	uo	uu+	Could form a Head and Shoulder Top and trigger sell signals if the supports at 1290 / 1240 are broken. BUY with uptrend resumption expected if 1410 / 1425 is broken.			
39%	HELVETIA HLDG	HELN.S	136.90	+	-	uo	Hold.	08.10.2019	137.10	-0.15%
33%	HIAG IMMOBILIEN	HIAG.S	107.00	-	uo	uu+				
83%	HIGHL EVNT & ENT	HLEE.S	19.90	+	u+	+				
39%	HOCHDORF N	HOCN.S	79.10	+	do	-				
89%	HUBER & S N	HUBN.S	72.40	u+	+	uu+				
100%	HYP0 BK LENZB N	HBLN.S	4'520.00	u+	+	+				
100%	IDORSIA N	IDIA.S	30.12	+	+	+	Likely to consolidate around 30.50. A break of 31 would signal 35 or 43.			
72%	IMPLENIA N	IMPN.S	39.26	+	o	o				
94%	INFICON N	IFCN.S	730.50	+	+	+	Hold.	10.09.2019	645.40	13.19%
100%	INTERROLL N	INRN.S	2'225.00	+	+	+				

SPI Index 200 constituent stocks - alphabetically (Intershop-Meyer)

SCORE	COMPANY	RIC	PRICE	LT	MT	ST	COMMENT	DATE BOUGHT	PRICE BOUGHT	PROFIT or LOSS
100%	INTERSHOP N	ISN.S	572.00	+	+	+				
100%	INVESTIS N	IREN.S	77.80	+	u+	uu+				
11%	IVF HARTMANN	VBSN.S	151.00	o	-	d-				
89%	JULIUS BAER N	BAER.S	46.46	+	+	o	Sell the position if 44.70 is broken.	10.09.2019	43.30	7.30%
78%	JUNGFRAUBAHN N	JFN.S	159.80	+	u+	u+				
94%	KARDEX I	KARN.S	165.60	+	+	+	Hold.	08.11.2019	151.50	9.31%
6%	KLINGELNBERG N	KLIN.S	24.75	-	-	uo				
100%	KOMAX N	KOMN.S	231.60	+	u+	u+	Hold.	10.09.2019	204.40	13.31%
28%	KUDELSKI	KUD.S	5.80	do	do	dd-				
100%	KUEHNE & NAGEL	KNIN.S	163.65	+	+	+	BUY. Must rise above 165 to signal 168, 174 or 183.	09.12.2019	163.65	
61%	KUROS BIOSCIENCE	KURN.S	2.45	+	o	uu+				
100%	LAFARGEHOLCIM	LHN.S	51.72	+	+	uu+	The uptrend from October has entered a short-term consolidation. But, LHN could rise to 54, a break of which would signal 59 / 60. Supports 51.35, 50.85.	29.10.2019	51.20	1.02%
17%	LALIQUE	LLQ.S	38.00	d-	do	dd-				
100%	LANDIS GYR	LANDI.S	102.60	+	+	+				
100%	LASTMINUTE ORD	LMN.S	42.60	+	+	+				
33%	LECLANCHE N	LECN.S	1.34	-	uo	uu+				
94%	LEM HOLDING N	LEHN.S	1'350.00	+	+	+				
61%	LEONTEQ	LEON.S	31.80	o	u+	+				
0%	LIECH LANDBK	LLBN.S	62.40	d-	d-	-				
94%	LINDT & SP N	LISN.S	83'800.00	+	+	do				
89%	LINDT & SP PS	LISP.S	7'450.00	+	+	do		05.11.2019	7360	1.22%
94%	LOGITECH	LOGN.S	43.34	+	+	+				
44%	LONZA GRP AG N	LONN.S	340.50	o	o	+	Sell the position if 332 is broken.	4.11.2019	360.50	-5.55%
22%	LUZERNER KB N	LUKN.S	408.00	-	o	uo				
67%	MCH GROUP AG	MCHN.S	27.30	+	+	dd-	Sold with the break of 28.			
0%	MEDACTA GROUP	MOVE.S	69.10	d-	dd-	dd-				
78%	MEDARTIS	MEDA.S	46.00	uo	+	+				
39%	MEIER TOBLER GRO	METG.S	14.10	o	uo	uu+				
100%	METALL ZUG	METN.S	2'170.00	+	+	+				
11%	MEYER BURGER N	MBTN.S	0.41	do	dd-	-				

SPI Index 200 constituent stocks - alphabetically (Mikron-Santhera)

SCORE	COMPANY	RIC	PRICE	LT	MT	ST	COMMENT	DATE BOUGHT	PRICE BOUGHT	PROFIT or LOSS
17%	MIKRON N	MIKN.S	6.70	-	o	-				
83%	MOBILEZONE HLD I	MOZN.S	10.56	+	do	+				
78%	MOBIMO HLDG	MOBN.S	291.00	+	u+	+				
39%	MOLECULAR PARTNE	MOLN.S	16.34	+	-	uo	Sell signal if 15.50 is broken.	12.11.2019	16.88	-3.20%
17%	NESTLE SA	NESN.S	103.90	-	-	u+	See chart.			
94%	NEWRON PHARMA N	NWRN.S	7.40	+	+	+				
83%	NOVARTIS N	NOVN.S	91.28	+	+	+	See chart.			
100%	O FUSSLIN	OFN.S	99.00	+	+	+	Hold.	24.05.2019	85.55	15.72%
17%	OBSEVA SA/d	OBSV.O	4.57	-	-	+				
94%	OC OERLIKON CORP	OERL.S	11.17	+	+	+	Hold.	4.11.2019	10.58	5.58%
72%	ORASCOM DEV H	ODHN.S	15.28	o	o	uu+				
89%	ORIOR N	ORON.S	89.60	+	+	do				
100%	PANALPINA WELT	PWTN.S	264.60	+	+	+				
100%	PARGESA I	PARG.S	79.65	+	+	uu+				
100%	PARTNERS GROUPAG	PGHN.S	856.40	+	+	+	Hold.	20.11.2019	811.00	5.60%
100%	PEACH PROP	PEAN.S	37.70	+	+	+				
89%	PERFECT HOLDING	PRFN.S	0.02	U+	U+	u+				
33%	PERROT DUVAL I1	PEDU.S	124.00	o	uo	uo				
100%	PHOENIX I	PM.S	456.50	+	+	u+	Hold.	30.10.2019	426.00	7.16%
100%	PLAZZA AG	PLANZ.S	266.00	+	+	u+				
72%	POENINA	PNHO.S	46.20	+	+	uo	Must hold above 45 or the inverse Head & Shoulder bottom could be negated.	07.11.2019	46.60	-0.86%
56%	POLYPHOR N	POLN.S	7.85	+	do	o				
39%	PRIVATE EQUITY N	PEHN.S	58.00	o	o	-				
83%	PSP CH PRPTY N	PSPN.S	130.80	+	o	uu+				
33%	RELIEF THERAPEUT	RLFB.S	0.0012	-	uo	uu+				
61%	RICHEMONT N	CFR.S	75.26	+	+	do	Sell signals if 71.50 / 68 is broken.	05.11.2019	79.50	-5.33%
83%	RIETER N	RIEN.S	140.60	+	uo	uu+				
83%	ROCHE HOLDING AG	ROG.S	305.35	+	+	+	see chart	24.05.2019	272.10	12.22%
67%	ROMANDE ENERGIE	HREN.S	1'210.00	o	uu+	uo				
78%	SANTHERA PHARMA	SANN.S	12.30	o	+	+				

SPI Index 200 constituent stocks - alphabetically (Schaffner-Tamedia)

SCORE	COMPANY	RIC	PRICE	LT	MT	ST	COMMENT	DATE BOUGHT	PRICE BOUGHT	PROFIT or LOSS
11%	SCHAFFNER N	SAHN.S	205.00	do	dd-	dd-				
100%	SCHINDLER N	SCHN.S	240.00	+	+	+				
94%	SCHINDLER PS	SCHP.S	249.40	+	+	+	Likely to have peaked at least short term at 151.50. Sell signal if 244 and 237 is broken. Lower supports are 2460 and 2425.	30.10.2019	238.30	4.66%
0%	SCHLATTER N	STRN.S	35.60	-	d-	-				
17%	SCHMOLZ+BICKENB	STLN.S	0.23	-	o	-				
94%	SCHWEITER I	SWTQ.S	1'162.00	+	+	+	Hold.	05.11.2019	1041.0	11.62%
33%	SENSIRION N	SENSI.S	41.10	+	d-	dd-	TOOK PROFIT of 9% with the break of 40.50.			
100%	SFS GROUP	SFSN.S	94.40	+	+	uu+	Hold.	28.10.2019	89.10	5.95%
100%	SGS N	SGSN.S	2'621.00	+	+	+				
78%	SIEGFRIED N	SFZN.S	441.00	+	+	+	Supports are 426 and 415.			
83%	SIG COMB GRP N	SIGNC.S	14.46	+	u+	+	TOOK PROFITS OF 28%.			
100%	SIKA	SIKA.S	173.70	+	+	+				
11%	SNB N	SNBN.S	5'120.00	o	-	d-				
17%	SOFTWAREONE N	SWON.S	20.35	-	-	+				
11%	SONOVA H AG	SOON.S	222.30	do	dd-	d-				
11%	SPICE PRIV AG	SPCE.S	19.80	o	-	d-				
83%	ST GALLER KB N	SGKN.S	443.50	+	do	+				
22%	STADLER RAIL	SRAIL.S	46.72	na	dd-	d-	Supports are 45.50 and 44.50.			
17%	STARRAG N	STGN.S	44.20	o	-	uo				
94%	STRAUMANN HLD N	STMN.S	951.60	+	+	+	Could well have topped at 973. Sell to be signaled if 935 is broken. Support 910.	14.10.2019	846.00	12.48%
100%	SULZER N	SUN.S	109.00	+	+	u+	Hold.	4.11.2019	103.20	5.62%
33%	SUNRISE N	SRCG.S	77.65	+	d-	-				
94%	SWATCH GROUP I	UHR.S	277.30	+	+	+	BUY signal to be triggered if 288 / 291 is broken. Could reverse and activate the next resistance at 305 / 301 or 330 to 350.	1.11.2019	276.30	0.36%
100%	SWISS FIN&PROP	SFPN.S	98.00	+	+	u+				
89%	SWISS LIFE HLDG	SLHN.S	496.50	o	+	+				
78%	SWISS PRIME SITE	SPSN.S	106.40	+	+	+	Upgrade to be negated if 107 is broken.			
100%	SWISS RE N	SRENH.S	109.00	+	+	+	Could extend the uptrend to 110.50 / 111.			
100%	SWISSCOM N	SCMN.S	519.60	+	+	+				
100%	SWISSQUOTE GRP N	SQN.S	47.16	+	+	+				
28%	TAMEDIA N	TAMN.S	91.40	o	o	-				

SPI Index 200 constituent stocks - alphabetically (Tecan-Zwahlen)

SCORE	COMPANY	RIC	PRICE	LT	MT	ST	COMMENT	DATE BOUGHT	PRICE BOUGHT	PROFIT or LOSS
94%	TECAN HLD N	TECN.S	273.00	+	+	+	Hold.	20.11.2019	245.50	11.20%
67%	TEMENOS N	TEMN.S	152.45	-	+	+				
0%	THURGAUER KB PS	TKBP.S	106.50	d-	dd-	dd-				
6%	TITL BN BERG N	TIBN.S	330.00	-	-	uo				
28%	TORNOS HOLDING N	TOHN.S	6.78	O	O	-				
100%	U-BLOX N	UBXN.S	94.10	+	+	+	Hold.	1.11.2019	81.20	15.89%
72%	UBS GROUP N	UBSG.S	11.95	+	+	o	Sell if 11.60 is broken.	16.10.2019	11.30	5.71%
100%	VALARTIS GROUP	VLRT.S	10.30	+	+	u+				
0%	VALIANT N	VATN.S	94.80	-	-	-				
17%	VALORA N	VALN.S	265.00	O	-	uo				
100%	VARIA US PROP	VARN.S	40.80	+	+	+				
100%	VAT GROUP N	VACN.S	151.70	+	+	+				
78%	VAUDOISE VERS N	VAHN.S	558.00	+	O	o				
78%	VETROPACK I	VET.S	3'015.00	+	U+	uu+	Hold.	29.08.2019	2485	21.33%
94%	VIFOR PHARMA	VIFN.S	176.35	+	+	+	Hold.	25.11.2019	164.00	7.53%
100%	VILLARS N	VILN.S	810.00	+	+	u+				
17%	VON ROLL I	ROLS	0.86	-	O	-				
100%	VONTOBEL N	VONN.S	64.55	+	+	+	Next resistance is 67 / 68.50.			
61%	VP BANK AG	VPBN.S	153.60	O	UO	+				
17%	VZ HOLDING N	VZN.S	298.00	-	O	-				
17%	WALLISER KTBK	WKB.S	113.00	-	do	d-				
100%	WARTECK N	WARN.S	2'060.00	+	U+	+				
83%	WISEKEY N	WIHN.S	2.45	U+	U+	+				
44%	YPSOMED HOLDING	YPSN.S	136.60	+	-	+				
67%	ZEHNDER I	ZEHN.S	44.30	+	+	dd-				
100%	ZUEBLIN N	ZUBN.S	27.00	+	+	uu+				
83%	ZUG ESTATE HLD	ZUGN.S	2'150.00	+	U+	u+				
72%	ZUGER KB I	ZG.S	6'140.00	do	+	dd-				
100%	ZUR ROSE GROUP N	ROSEG.S	96.00	+	+	u+	Hold.	29.10.2019	96.30	-0.31%
83%	ZURICH INSURANCE	ZURN.S	396.40	+	O	+	Hold.	10.09.2019	374.00	5.99%
22%	ZWAHLEN & MAYR	ZWM.S	250.00	-	O	o				

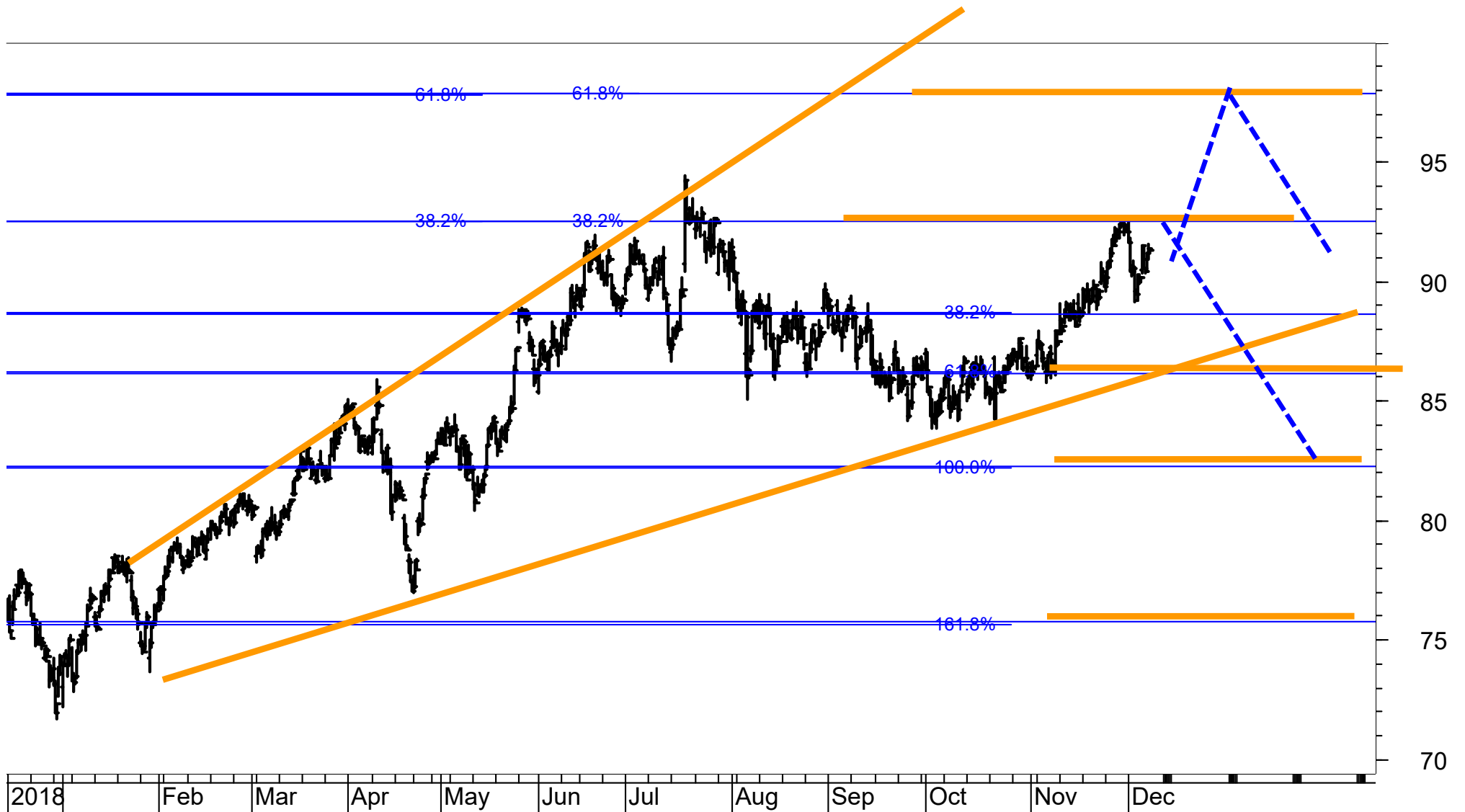
NESTLE – daily chart

Wave 4 is likely to be forming with support at 100.50 / 99.50
Lower supports are at 96 and 91.



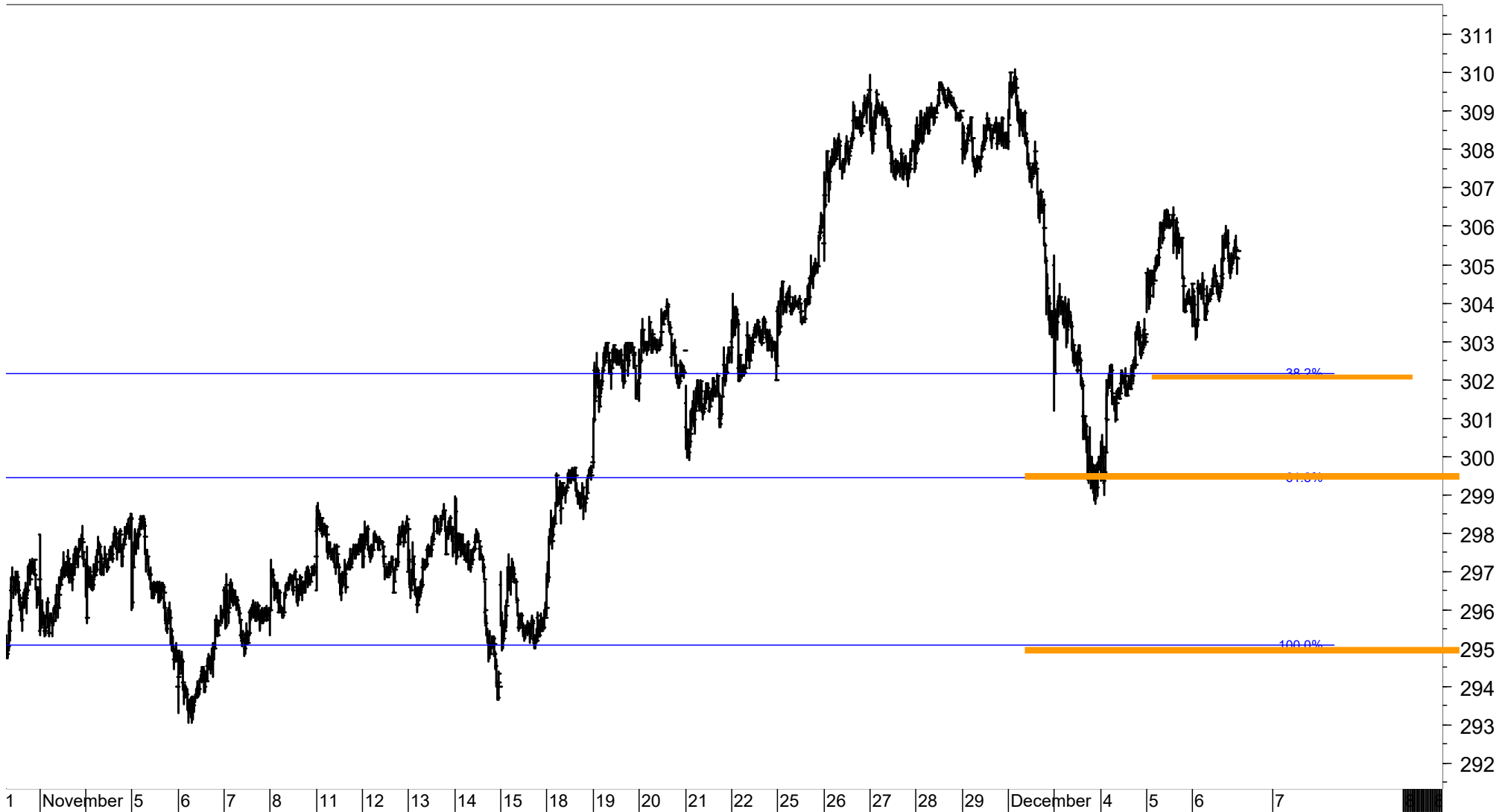
NOVARTIS – 240-minute chart

Novartis remains below the key resistance at 92.50, a break of which is required to signal 98.
Supports are 86 and 82.



ROCHE GS – 10-minute chart

Roche will trigger major sell signals if the supports at 302, 299 and 295 are broken.



STOXX 200 stocks – listed according to the Score (range from 100% to 0%, 40%-60% is neutral)

SCORE	COMPANY	RIC
100%	A P MOLLER MAERSK B	MAERSk.B.CO
100%	ADIDAS (XET)	ADSGn.DE
100%	AMADEUS IT GROUP	AMA.MC
100%	ARCELORMITTAL	MT.AS
100%	ASSA ABLOY B	ASSAb.ST
100%	ATLAS COPCO A	ATCOa.ST
100%	BMW (XET)	BMWG.DE
100%	CRH (DUB)	CRH.I
100%	DASSAULT SYSTEMES	DAST.PA
100%	DOMETIC GROUP	DOMETIC.ST
100%	DSV PANALPINA	DSV.CO
100%	ELECTROLUX B	ELUXb.ST
100%	GENMAB	GEN.CO
100%	GETINGE B	GETib.ST
100%	HEXAGON B	HEXAb.ST
100%	HEXPOL B	HPOLb.ST
100%	INDITEX	ITX.MC
100%	INFINEON TECHS. (XET)	IFXGn.DE
100%	KONE 'B'	KNEBV.HE
100%	LOOMIS B	LOOMb.ST
100%	LVMH	LVMH.PA
100%	NIBE INDUSTRIER B	NIBEb.ST
100%	NOVOZYMES B	NZYMb.CO
100%	PHILIPS ELTN.KONINKLIJKE	PHG.AS
100%	SANDVIK	SAND.ST
100%	SCHNEIDER ELECTRIC	SCHN.PA
100%	SECURITAS B	SECUB.ST
100%	SKF B	SKFb.ST
100%	SOCIETE GENERALE	SOGN.PA
100%	STOREBRAND	STB.OL
100%	TGS-NOPEC GEOPHS.	TGS.OL
100%	TRELLEBORG B	TRELB.ST
94%	ASSOCIATED BRIT.FOODS	ABF.L
94%	AXA	AXAF.PA
94%	BNP PARIBAS	BNPP.PA
94%	DEUTSCHE POST (XET)	DPWGn.DE
94%	FASTIGHETS BALDER B	BALDb.ST
94%	FRESENIUS (XET)	FREG.DE
94%	HEIDELBERGCEMENT (XET)	HEIG.DE
94%	HERMES INTL.	HRMS.PA
94%	KERING	PRTP.PA
94%	KINNEVIK B	KINVB.ST
94%	LLOYDS BANKING GROUP	LLOY.L
94%	MUENCHENER RUCK. (XET)	MUVGn.DE
94%	ROYAL BANK OF SCTL.GP.	RBS.L
94%	SAP (XET)	SAPG.DE
94%	SIEMENS (XET)	SIEGn.DE
94%	SIMCORP	SIM.CO
94%	SUBSEA 7	SUBC.OL
94%	WFD UNIBAIL RODAMCO ST	URW.AS

SCORE	COMPANY	RIC
89%	ADYEN	ADYEN.AS
89%	ALFA LAVAL	ALFA.ST
89%	ANGLO AMERICAN	AAL.L
89%	BRITISH AMERICAN TOBACC	BATS.L
89%	DANSKE BANK	DANSKE.CO
89%	ERICSSON B	ERICb.ST
89%	FERRARI (MIL)	RACE.MI
89%	GN STORE NORD	GN.CO
89%	HEINEKEN	HEIN.AS
89%	HEINEKEN HOLDING	HEIO.AS
89%	KGHM	KGH.WA
89%	SALMAR	SALM.OL
89%	VESTAS WINDSYSTEMS	VWS.CO
83%	ASML HOLDING	ASML.AS
83%	CARLSBERG B	CARLb.CO
83%	DEUTSCHE LUFTHANSA (XET)	LHAG.DE
83%	E ON N (XET)	EONGn.DE
83%	EPIROC A	EPIRa.ST
83%	GLAXOSMITHKLINE	GSK.L
83%	INDUSTRIVARDEN A	INDUa.ST
83%	INVESTOR B	INVEb.ST
83%	KBC GROUP	KBC.BR
83%	NOVO NORDISK 'B'	NOVOB.CO
83%	ORKLA	ORK.OL
83%	SAAB B	SAABb.ST
83%	SIEMENS (XET) HEALTHINEER	SHLG.DE
83%	SWEDISH MATCH	SWMA.ST
83%	UNILEVER	UNA.AS
78%	AIR LIQUIDE	AIRP.PA
78%	ALLIANZ (XET)	ALVG.DE
78%	AMBU B	AMBUb.CO
78%	BAYER (XET)	BAYGn.DE
78%	BBV.ARGENTARIA	BBVA.MC
78%	ESSILORLUXOTTICA	ESLX.PA
78%	HENKEL PREF. (XET)	HNKG.DE
78%	ING GROEP	INGA.AS
78%	LINDE (XET)	LINI.DE
78%	L'OREAL	OREP.PA
78%	RIO TINTO	RIO.L
78%	SAFRAN	SAF.PA
78%	TRYG	TRYG.CO
78%	VOLKSWAGEN PREF. (XET)	VOWG_p.DE
72%	FIAT CHRYSLER AUTOS.	FCHA.MI
72%	GJENSIDIGE FORSIKRING	GJFS.OL
72%	INTESA SANPAOLO	ISP.MI
72%	MICHELIN	MICP.PA
72%	ORSTED	ORSTED.CO
72%	VOLVO B	VOLVb.ST
67%	AIRBUS	AIR.PA
67%	BARCLAYS	BARCL

SCORE	COMPANY	RIC
67%	CASTELLUM	CAST.ST
67%	CD PROJECT RED	CDR.WA
67%	ENDESA	ELE.MC
67%	ENGIE	ENGIE.PA
67%	FRESENIUS MED.CARE (XET)	FMEG.DE
67%	KONINKLIJKE AHOLD DELHA	AD.AS
67%	REPSOL YPF	REP.MC
61%	BHP GROUP	BHPB.L
61%	PRUDENTIAL	PRU.L
61%	SVENSKA CELLULOSA AKTIE	SCAb.ST
61%	TELEFONICA	TEF.MC
56%	AKER BP	AKERBP.OL
56%	BASF (XET)	BASFn.DE
56%	BT GROUP	BT.L
56%	JYSKE BANK	JYSK.CO
56%	SANOFI	SASY.PA
56%	TOTAL	TOTF.PA
50%	ACCOR	ACCP.PA
50%	ASTRAZENECA	AZN.L
50%	CHRISTIAN HANSEN HOLDIN	CHRH.CO
50%	ESSITY B	ESSITYb.ST
50%	NATIONAL GRID	NG.L
50%	SKANSKA B	SKAb.ST
44%	BANCO SANTANDER	SAN.MC
44%	CHRISTIAN DIOR	DIOR.PA
44%	DANONE	DANO.PA
44%	NORDEA BANK (OME)	NDASE.ST
44%	SAMPO 'A'	SAMPO.HE
44%	SCHIBSTED A	SBSTA.OL
44%	TESCO	TSCO.L
39%	AENA SME	AENA.MC
39%	BOLIDEN ORD SHS	BOL.ST
39%	DAIMLER (XET)	DAIGn.DE
39%	DEUTSCHE BOERSE (XET)	DBrGn.DE
39%	ENEL	ENEI.MI
39%	EQUINOR	EQNR.OL
39%	RECKITT BENCKISER GROUP	RB.L
39%	SVENSKA HANDELSBANKEN	SHBa.ST
33%	ASSICURAZIONI GENERALI	GASI.MI
33%	CONTINENTAL (XET)	CONG.DE
33%	EDF	EDF.PA
33%	HUSQVARNA B	HUSQb.ST
33%	ISS	ISS.CO
33%	VINCI	SGEF.PA
28%	ANHEUSER-BUSCH INBEV	ABI.BR
28%	FABEGE	FABG.ST
28%	STANDARD CHARTERED	STAN.L
22%	BEIERSDORF (XET)	BEIG.DE
22%	COLOPLAST B	COLOb.CO
22%	MERCK KGAA (XET)	MRCG.DE

SCORE	COMPANY	RIC
22%	ROYAL DUTCH SHELL A	RDSa.AS
22%	RWE (XET)	RWEG.DE
22%	SANTANDER BANK POLSKA	SPLt.WA
22%	TELE2 B	TEL2b.ST
22%	VONOVIA (XET)	VNAh.DE
17%	COVESTRO (XET)	iCOV.DE
17%	DEUTSCHE BANK (XET)	DBKGn.DE
17%	ICA GRUPPEN	ICAA.ST
17%	KINDRED GROUP SDR	KINDSdb.ST
17%	LUNDIN PETROLEUM	LUPE.ST
17%	NOKIA	NOKIA.HE
17%	NORSK HYDRO	NHY.OL
17%	PANDORA	PNDORA.CO
17%	PZU GROUP	PZU.WA
17%	RELX	REL.L
17%	SWEDISH ORPHAN BIOVITRU	SOBIV.ST
17%	THYSSENKRUPP (XET)	TKAG.DE
11%	AAK	AAK.ST
11%	IMPERIAL BRANDS	IMB.L
11%	INNOGY (XET)	IGY.DE
11%	PERNOD-RICARD	PERP.PA
11%	SKANDINAVISKA ENSKILDA B	SEBa.ST
11%	UNILEVER (UK)	ULVR.L
11%	VODAFONE GROUP	VOD.L
11%	YARA INTERNATIONAL	YAR.OL
6%	ABN AMRO BANK	ABNd.AS
6%	DEUTSCHE TELEKOM (XET)	DTEGn.DE
6%	ELEKTA B	EKTab.ST
6%	ENI	ENI.MI
6%	HSBC HOLDINGS	HSBAL
6%	PEUGEOT	PEUP.PA
6%	SWEDBANK A	SWEDa.ST
6%	TELIA COMPANY	TELIA.ST
0%	BANK POLSKA KASA OPIEKI	PEO.WA
0%	BP	BP.L
0%	COMPASS GROUP	CPG.L
0%	DIAGEO	DGE.L
0%	DNB	DNB.OL
0%	GLENORE	GLEN.L
0%	IBERDROLA	IBE.MC
0%	NATURGY ENERGY	NTGY.MC
0%	NESTE	NESTE.HE
0%	ORANGE	ORAN.PA
0%	PKO BANK	PKO.WA
0%	PLKNC.NAFTOWY ORLEN	PKN.WA
0%	POLISH OIL AND GAS	PGN.WA
0%	TELENOR	TEL.OL
0%	THALES	TCFP.PA
0%	VIVENDI	VIV.PA
0%	WIRECARD (XET)	WDIG.DE

Stocks marked blue are the Eurostoxx 50 Index constituents

STOXX 200 stocks – listed alphabetically (A-Infineon)

SCORE	COMPANY	RIC	PRICE	LT	MT	ST
100%	A P MOLLER MAERSK B	MAERSKb.CO	10'075.00	+	+	+
11%	AAK	AAK.ST	172.80	O	-	-
6%	ABN AMRO BANK	ABNd.AS	15.24	-	-	uo
50%	ACCOR	ACCP.PA	38.76	+	do	d-
100%	ADIDAS (XET)	ADSGn.DE	279.20	+	+	+
89%	ADYEN	ADYEN.AS	701.80	+	+	+
39%	AENA SME	AENA.MC	165.60	O	do	dd-
78%	AIR LIQUIDE	AIRP.PA	122.40	+	+	+
67%	AIRBUS	AIR.PA	127.04	+	+	-
56%	AKER BP	AKERBP.OL	260.00	+	do	uo
89%	ALFA LAVAL	ALFA.ST	232.00	+	+	do
78%	ALLIANZ (XET)	ALVG.DE	217.10	+	O	u+
100%	AMADEUS IT GROUP	AMA.MC	72.76	+	+	+
78%	AMBU B	AMBUb.CO	116.85	+	+	u+
89%	ANGLO AMERICAN	AAL.L	2'068.00	+	+	u+
28%	ANHEUSER-BUSCH INBEV	ABI.BR	71.80	O	-	+
100%	ARCELORMITTAL	MT.AS	16.10	+	+	+
83%	ASML HOLDING	ASML.AS	252.60	+	+	+
100%	ASSA ABLOY B	ASSAb.ST	228.90	+	+	u+
33%	ASSICURAZIONI GENERALI	GASI.MI	18.21	+	d-	-
94%	ASSOCIATED BRIT.FOODS	ABF.L	2'538.00	+	+	+
50%	ASTRAZENECA	AZN.L	7'258.00	+	do	dd-
100%	ATLAS COPCO A	ATCOa.ST	359.50	+	+	uu+
94%	AXA	AXAF.PA	24.85	+	+	uo
44%	BANCO SANTANDER	SAN.MC	3.59	uo	O	u+
0%	BANK POLSKA KASA OPIEKI	PEO.WA	95.52	d-	d-	dd-
67%	BARCLAYS	BARC.L	169.40	+	+	dd-
56%	BASF (XET)	BASFn.DE	68.29	+	O	uo
78%	BAYER (XET)	BAYGn.DE	69.18	+	u+	uu+
78%	BBV.ARGENTARIA	BBVA.MC	4.78	+	O	+
22%	BEIERSDORF (XET)	BEIG.DE	104.80	O	d-	do
61%	BHP GROUP	BHPB.L	1'703.80	-	+	+
100%	BMW (XET)	BMWG.DE	73.79	+	+	uu+
94%	BNP PARIBAS	BNPP.PA	50.94	+	+	do
39%	BOLIDEN ORD SHS	BOL.ST	247.40	+	-	uo
0%	BP	BP.L	473.10	-	d-	-
89%	BRITISH AMERICAN TOBACC	BATS.L	2'998.00	+	+	do
56%	BT GROUP	BT.L	191.16	O	do	u+
83%	CARLSBERG B	CARLb.CO	994.80	u+	u+	+
67%	CASTELLUM	CAST.ST	208.30	+	+	+
67%	CD PROJECT RED	CDR.WA	261.30	+	+	-
44%	CHRISTIAN DIOR	DIOR.PA	448.20	do	+	dd-
50%	CHRISTIAN HANSEN HOLDIN	CHRH.CO	530.80	-	u+	+
22%	COLOPLAST B	COLOb.CO	793.40	O	d-	dd-
0%	COMPASS GROUP	CPG.L	1'854.00	d-	-	-
33%	CONTINENTAL (XET)	CONG.DE	117.38	do	O	uo
17%	COVESTRO (XET)	1COV.DE	41.83	O	-	uo
100%	CRH (DUB)	CRH.I	35.09	+	+	+
39%	DAIMLER (XET)	DAIGn.DE	49.46	+	dd-	O
44%	DANONE	DANO.PA	74.48	O	O	u+

SCORE	COMPANY	RIC	PRICE	LT	MT	ST
89%	DANSKE BANK	DANSKE.CO	94.36	u+	uu+	+
100%	DASSAULT SYSTEMES	DAST.PA	145.30	+	+	+
17%	DEUTSCHE BANK (XET)	DBKGn.DE	6.53	O	-	O
39%	DEUTSCHE BOERSE (XET)	DB1Gn.DE	137.40	+	d-	do
94%	DEUTSCHE POST (XET)	DPWGn.DE	34.08	+	+	u+
6%	DEUTSCHE TELEKOM (XET)	DTEGn.DE	15.06	d-	-	do
0%	DIAGEO	DGE.L	3'100.50	-	d-	dd-
0%	DNB	DNB.OL	155.40	-	-	-
100%	DOMETIC GROUP	DOMETIC.ST	95.50	+	+	+
100%	DSV PANALPINA	DSV.CO	762.00	+	+	u+
83%	E ON N (XET)	EONGn.DE	9.22	do	+	+
33%	EDF	EDF.PA	9.42	-	do	+
100%	ELECTROLUX B	ELUXb.ST	258.20	+	u+	u+
6%	ELEKTA B	EKTab.ST	116.35	-	-	uo
67%	ENDESA	ELE.MC	24.34	do	do	+
39%	ENEL	ENEI.MI	6.77	+	d-	do
67%	ENGIE	ENGIE.PA	14.60	+	uo	+
6%	ENI	ENI.MI	13.78	-	d-	uo
83%	EPIROC A	EPIRa.ST	113.80	+	+	+
39%	EQUINOR	EQNR.OL	170.00	u+	-	uo
89%	ERICSSON B	ERICb.ST	87.62	u+	+	uu+
78%	ESSILORLUXOTTICA	ESLX.PA	138.75	+	+	do
50%	ESSITY B	ESSITYb.ST	295.00	+	do	-
28%	FABEGE	FABG.ST	148.95	-	O	+
94%	FASTIGHETS BALDER B	BALDb.ST	409.00	+	+	+
89%	FERRARI (MIL)	RACE.MI	150.85	+	+	do
72%	FIAT CHRYSLER AUTOS.	FCHA.MI	13.26	+	+	uo
94%	FRESENIUS (XET)	FREG.DE	49.42	+	+	do
67%	FRESENIUS MED.CARE (XET)	FMEG.DE	64.68	+	+	dd-
100%	GENMAB	GEN.CO	1'615.00	+	+	+
100%	GETINGE B	GETIb.ST	172.90	+	+	uu+
72%	GJENSIDIGE FORSIKRING	GJFS.OL	179.30	uo	u+	+
83%	GLAXOSMITHKLINE	GSK.L	1'729.40	+	do	+
0%	GLENORE	GLEN.L	220.15	d-	dd-	dd-
89%	GN STORE NORD	GN.CO	315.70	+	+	+
94%	HEIDELBERGCEMENT (XET)	HEIG.DE	67.50	+	+	+
89%	HEINEKEN	HEIN.AS	95.68	O	u+	+
89%	HEINEKEN HOLDING	HEIO.AS	88.30	O	u+	u+
78%	HENKEL PREF. (XET)	HNKG.DE	94.80	+	do	do
94%	HERMES INTL.	HRMS.PA	665.80	+	+	+
100%	HEXAGON B	HEXAb.ST	546.80	+	+	+
100%	HEXPOL B	HPOLb.ST	91.90	+	+	uu+
6%	HSBC HOLDINGS	HSBA.L	561.90	-	d-	O
33%	HUSQVARNA B	HUSQb.ST	74.86	O	O	uo
0%	IBERDROLA	IBE.MC	8.77	d-	-	dd-
17%	ICA GRUPPEN	ICAA.ST	421.30	-	-	u+
11%	IMPERIAL BRANDS	IMB.L	1'713.40	-	-	uu+
100%	INDITEX	ITX.MC	28.92	+	+	+
83%	INDUSTRIVARDEN A	INDUa.ST	224.20	+	+	d-
100%	INFINEON TECHS. (XET)	IFXGn.DE	20.04	+	+	u+

STOXX 200 stocks – listed alphabetically (ING-Z)

SCORE	COMPANY	RIC	PRICE	LT	MT	ST
78%	ING GROEP	INGA.AS	10.43	+	+	uu+
11%	INNOGY (XET)	IGY.DE	44.41	O	-	-
72%	INTESA SANPAOLO	ISP.MI	2.31	+	u+	uo
83%	INVESTOR B	INVEb.ST	510.40	+	+	u+
33%	ISS	ISS.CO	158.50	-	O	+
56%	JYSKE BANK	JYSK.CO	224.90	+	O	uo
83%	KBC GROUP	KBC.BR	66.34	+	+	-
94%	KERING	PRTP.PA	549.10	+	+	+
89%	KGHM	KGH.WA	92.90	+	+	uu+
17%	KINDRED GROUP SDR	KINDsdb.ST	57.22	d-	O	d-
94%	KINNEVIK B	KINVb.ST	224.40	+	+	+
100%	KONE 'B'	KNEBV.HE	56.88	+	+	u+
67%	KONINKLIJKE AHOLD DELHA	AD.AS	23.74	+	u+	uo
78%	LINDE (XET)	LINI.DE	185.55	+	+	O
94%	LLOYDS BANKING GROUP	LLOY.L	61.47	+	+	+
100%	LOOMIS B	LOOMb.ST	403.20	+	+	+
78%	L'OREAL	OREP.PA	256.70	+	do	uu+
83%	DEUTSCHE LUFTHANSA (XET)	LHAG.DE	17.02	+	+	d-
17%	LUNDIN PETROLEUM	LUPE.ST	295.90	O	-	uo
100%	LVMH	LVMH.PA	401.35	+	+	+
72%	MICHELIN	MICP.PA	108.80	+	+	uo
22%	MERCK KGAA (XET)	MRCG.DE	104.35	+	d-	-
94%	MUENCHENER RUCK. (XET)	MUVGn.DE	259.40	+	+	+
50%	NATIONAL GRID	NG.L	892.60	+	O	-
0%	NATURGY ENERGY	NTGY.MC	22.97	-	-	d-
0%	NESTE	NESTE.HE	29.51	d-	dd-	d-
100%	NIBE INDUSTRIER B	NIBEb.ST	153.10	+	+	+
17%	NOKIA	NOKIA.HE	3.15	-	-	+
44%	NORDEA BANK (OME)	NDASE.ST	68.70	+	-	uu+
17%	NORSK HYDRO	NHY.OL	31.28	do	-	uo
83%	NOVO NORDISK 'B'	NOVOb.CO	383.95	+	+	u+
100%	NOVOZYMES B	NZYMb.CO	329.90	+	+	+
0%	ORANGE	ORAN.PA	13.59	dd-	dd-	dd-
83%	ORKLA	ORK.OL	90.70	+	+	+
72%	ORSTED	ORSTED.CO	625.20	O	+	+
17%	PANDORA	PNDORA.CO	267.90	do	-	O
11%	PERNOD-RICARD	PERP.PA	163.20	do	d-	-
6%	PEUGEOT	PEUP.PA	21.51	d-	-	uo
100%	PHILIPS ELTN.KONINKLIJKE	PHG.AS	42.61	+	+	+
0%	PKO BANK	PKO.WA	34.03	-	-	-
0%	PLKNC.NAFTOWY ORLEN	PKN.WA	82.12	-	-	-
0%	POLISH OIL AND GAS	PGN.WA	4.30	-	d-	-
61%	PRUDENTIAL	PRU.L	1'319.00	do	+	do
17%	PZU GROUP	PZU.WA	37.38	d-	do	dd-
39%	RECKITT BENCKISER GROUP	RB.L	6'001.00	O	do	+
17%	RELX	RELL	1'828.50	d-	do	dd-
67%	REPSOL YPF	REP.MC	14.64	+	O	uu+
78%	RIO TINTO	RIO.L	4'216.50	O	+	+
94%	ROYAL BANK OF SCTL.GP.	RBS.L	228.00	+	+	+
22%	ROYAL DUTCH SHELL A	RDSa.AS	25.96	d-	O	uo

SCORE	COMPANY	RIC	PRICE	LT	MT	ST
22%	RWE (XET)	RWEG.DE	26.19	do	-	dd-
83%	SAAB B	SAABb.ST	315.80	+	+	-
78%	SAFRAN	SAF.PA	148.40	+	+	O
89%	SALMAR	SALM.OL	449.10	+	+	+
44%	SAMPO 'A'	SAMPO.HE	36.73	uo	+	-
100%	SANDVIK	SAND.ST	178.15	+	+	uu+
56%	SANOFI	SASY.PA	83.56	+	O	dd-
22%	SANTANDER BANK POLSKA	SPL1.WA	283.40	-	uo	uo
94%	SAP (XET)	SAPG.DE	122.20	+	+	do
44%	SCHIBSTED A	SBSTA.OL	261.10	O	uo	uu+
100%	SCHNEIDER ELECTRIC	SCHN.PA	90.58	+	+	+
100%	SECURITAS B	SECUB.ST	161.25	+	+	uu+
94%	SIEMENS (XET)	SIEGn.DE	116.80	+	+	+
83%	SIEMENS (XET) HEALTHINEE	SHLG.DE	42.95	+	+	dd-
94%	SIMCORP	SIM.CO	746.00	+	+	+
11%	SKANDINAVISKA ENSKILDA B	SEBa.ST	83.12	-	-	u+
50%	SKANSKA B	SKAb.ST	210.30	+	do	-
100%	SKF B	SKFb.ST	186.25	+	+	+
100%	SOCIETE GENERALE	SOGN.PA	29.36	+	+	+
28%	STANDARD CHARTERED	STAN.L	675.80	+	dd-	O
100%	STOREBRAND	STB.OL	66.06	+	+	u+
94%	SUBSEA 7	SUBC.OL	97.80	+	+	O
61%	SVENSKA CELLULOZA AKTIE	SCAb.ST	97.50	+	O	uu+
39%	SVENSKA HANDELSBANKEN	SHBa.ST	92.50	+	d-	O
6%	SWEDBANK A	SWEDa.ST	123.65	-	-	uo
83%	SWEDISH MATCH	SWMA.ST	453.60	+	+	dd-
17%	SWEDISH ORPHAN BIOVITRU	SOBIV.ST	153.95	-	do	d-
22%	TELE2 B	TEL2b.ST	138.55	do	dd-	dd-
61%	TELEFONICA	TEF.MC	6.87	O	+	+
0%	TELENOR	TEL.OL	165.15	-	-	dd-
6%	TELIA COMPANY	TELIA.ST	40.90	d-	-	uo
44%	TESCO	TSCO.L	232.30	u+	-	uu+
100%	TGS-NOPEC GEOPHS.	TGS.OL	270.10	+	+	+
0%	THALES	TCFP.PA	87.96	-	-	d-
17%	THYSSENKRUPP (XET)	TKAG.DE	11.57	O	-	uo
56%	TOTAL	TOTF.PA	47.96	+	O	uo
100%	TRELLEBORG B	TRELB.ST	170.75	+	+	uu+
78%	TRYG	TRYG.CO	196.00	uo	+	+
94%	WFD UNIBAIL RODAMCO ST	URW.AS	127.00	+	+	uu+
11%	UNILEVER (UK)	ULVR.L	4'551.00	-	-	+
83%	UNILEVER	UNA.AS	54.38	u+	u+	+
89%	VESTAS WINDSYSTEMS	VWS.CO	668.60	+	+	+
33%	VINCI	SGEF.PA	98.24	+	-	-
0%	VIVENDI	VIV.PA	24.70	d-	-	dd-
11%	VODAFONE GROUP	VOD.L	144.38	do	-	-
78%	VOLKSWAGEN PREF. (XET)	VOWG_p.DE	176.60	+	+	uu+
72%	VOLVO B	VOLVb.ST	145.50	+	do	uo
22%	VONOVIA (XET)	VNAn.DE	46.42	do	dd-	dd-
0%	WIRECARD (XET)	WDIG.DE	115.15	-	d-	d-
11%	YARA INTERNATIONAL	YAR.OL	349.10	-	-	u+

S&P 200 stocks – listed according to the Score (range from 100% to 0%, 40%-60% is neutral)

SCORE	COMPANY	RIC
100%	ALPHABET 'C'	GOOG.O
100%	AMPHENOL 'A'	APH
100%	ANALOG DEVICES	ADI.O
100%	APPLE	AAPL.O
100%	BANK OF AMERICA	BAC
100%	BANK OF NEW YORK M	BK
100%	BECTON DICKINSON	BDX
100%	BERKSHIRE HATHAWA	BRKb
100%	BIOGEN	BIIB.O
100%	BLACKROCK	BLK
100%	BRISTOL MYERS SQUIB	BYM
100%	BROADCOM	AVGO.O
100%	CITIGROUP	C
100%	CONOCOPHILLIPS	COP
100%	DOVER	DOV
100%	EATON	ETN
100%	ELECTRONIC ARTS	EA.O
100%	EMERSON ELECTRIC	EMR
100%	GILEAD SCIENCES	GILD.O
100%	GOLDMAN SACHS G	GS
100%	HP	HPQ
100%	ILLINOIS TOOL WORKS	ITW
100%	JP MORGAN CHASE &	JPM
100%	KIMBERLY-CLARK	KMB
100%	MARRIOTT INTL.'A'	MAR.O
100%	METLIFE	MET
100%	MOODY'S	MCO
100%	MORGAN STANLEY	MS
100%	NIKE 'B'	NKE
100%	PNC FINL.SVS.GP.	PNC
100%	S&P GLOBAL	SPGI.K
100%	SCHLUMBERGER	SLB
100%	TRANSOCEAN	RIG
100%	V F	VFC
100%	WELLS FARGO & CO	WFC
94%	ACCENTURE CLASS A	ACN
94%	ADOBE (NAS)	ADBE.O
94%	ALLERGAN	AGN
94%	ALLSTATE ORD SHS	ALL
94%	ALTRIA GROUP	MO
94%	AMGEN	AMGN.O
94%	AUTODESK	ADSK.O
94%	CHARLES SCHWAB	SCHW.K
94%	CVS HEALTH	CVS
94%	DANAHER	DHR
94%	ESTEE LAUDER COS.'A'	EL
94%	FACEBOOK CLASS A	FB.O
94%	FIDELITY NAT.INFO.SV	FIS
94%	HUMANA	HUM
94%	ILLUMINA	ILMN.O

SCORE	COMPANY	RIC
94%	INTUITIVE SURGICAL	ISRG.O
94%	KRAFT HEINZ	KHC.O
94%	LINDE	LIN
94%	MARSH & MCLENNAN	MMC
94%	MASTERCARD	MA
94%	MICROSOFT	MSFT.O
94%	PHILIP MORRIS INTL.	PM
94%	PROLOGIS REIT	PLD
94%	RAYTHEON 'B'	RTN
94%	REGENERON PHARMS.	REGN.O
94%	UNITED TECHNOLOG	UTX
94%	UNITEDHEALTH GROU	UNH
94%	US BANCORP	USB
94%	VERTEX PHARMS.	VRTX.O
94%	VISA 'A'	V
89%	3M	MMM
89%	ABBOTT LABORATORI	ABT
89%	ALEXION PHARMS.	ALXN.O
89%	AON CLASS A	AON
89%	BOSTON SCIENTIFIC	BSX
89%	CAMECO (NYS)	CCJ
89%	CIGNA	CI
89%	ELI LILLY	LLY
89%	FISERV	FISV.O
89%	FORD MOTOR	F
89%	HCA HEALTHCARE	HCA
89%	MERCK & COMPANY	MRK
89%	NVIDIA	NVDA.O
89%	O REILLY AUTOMOTIV	ORLY.O
89%	WALT DISNEY	DIS
83%	ABBVIE	ABBV.K
83%	ACTIVISION BLIZZARD	ATVI.O
83%	ADVANCED MICRO DE	AMD.O
83%	AIR PRDS.& CHEMS.	APD
83%	AUTOMATIC DATA PR	ADP.O
83%	COGNIZANT TECH.SLT	CTSH.O
83%	GENERAL DYNAMICS	GD
83%	GENERAL ELECTRIC	GE
83%	GENERAL MILLS	GIS
83%	JOHNSON & JOHNSC	JNJ
83%	MICRON TECHNOLOG	MU.O
83%	PEPSICO	PEP.O
83%	SYSCO	SY
83%	WALMART	WMT
78%	AMERICAN EXPRESS	AXP
78%	DOW CHEMICAL	DOW
78%	EOG RES.	EOG
78%	FORTIVE	FTV
78%	LAM RESEARCH	LRCX.O
78%	MEDTRONIC	MDT

SCORE	COMPANY	RIC
78%	NEXTERA ENERGY	NEE
78%	ONEOK	OKE
78%	PAYCHEX	PAYX.O
78%	ROSS STORES	ROST.O
78%	SHERWIN-WILLIAMS	SHW
78%	TJX	TJX
72%	AMER.ELEC.PWR.	AEP
72%	ANTHEM	ANTM.K
72%	CATERPILLAR	CAT
72%	CELGENE DEAD - DELI	CELG.O
72%	COCA COLA	KO
72%	HONEYWELL INTL.	HON
72%	INTERCONTINENTAL E	ICE
72%	LOWE'S COMPANIES	LOW
72%	MONSTER BEVERAGE	MNST.O
72%	NORFOLK SOUTHERN	NSC
72%	PFIZER	PFE
72%	PROCTER & GAMBLE	PG
72%	SOUTHERN	SO
72%	TARGET	TGT
72%	VERIZON COMMUNIC	VZ
67%	BAXTER INTL.	BAX
67%	EXXON MOBIL	XOM
67%	INTEL	INTC.O
67%	IQVIA HOLDINGS	IQV
67%	LOCKHEED MARTIN	LMT
67%	MONDELEZ INTERNAT	MDLZ.O
67%	NETFLIX	NFLX.O
67%	PROGRESSIVE OHIO	PGR
67%	SEMPRA EN.	SRE
67%	STARBUCKS	SBUX.O
67%	VALERO ENERGY	VLO
61%	AT&T	T
61%	FEDEX	FDX
61%	TE CONNECTIVITY	TEL
56%	CSX	CSX.O
56%	EQUINIX REIT	EQIX.O
56%	LYONDELLBASELL IND	LYB
56%	PRUDENTIAL FINL.	PRU
56%	QUALCOMM	QCOM.O
56%	TEXAS INSTRUMENTS	TXN.O
56%	UNION PACIFIC	UNP
56%	WALGREENS BOOTS	WBA.O
56%	ZOETIS A	ZTS
50%	APPLIED MATS.	AMAT.O
50%	CHARTER COMMS.CLA	CHTR.O
50%	DELTA AIR LINES	DAL
50%	EDWARDS LIFESCIENC	EW
50%	PAYPAL HOLDINGS	PYPL.O
50%	PHILLIPS 66	PSX

SCORE	COMPANY	RIC
50%	ROPER TECHNOLOGIE	ROP
50%	SOUTHWEST AIRLINES	LUV
44%	CHEVRON	CVX
44%	CHUBB	CB
44%	TRAVELERS COS.	TRV
39%	BOOKING HOLDINGS	BKNG.O
39%	CME GROUP	CME.O
39%	MARATHON PETROLE	MPC
39%	SALESFORCE.COM	CRM
33%	COLGATE-PALM.	CL
33%	COSTCO WHOLESALE	COST.O
33%	DOMINION ENERGY	D
33%	MCDONALDS	MCD
33%	OCCIDENTAL PTL.	OXY
28%	AFLAC	AFL
28%	ALLIANCE DATA SYST	ADS
28%	CROWN CASTLE INTL.	CCI
28%	ORACLE	ORCL.K
28%	UNITED PARCEL SER.'E	UPS
28%	XILINX	XLNX.O
22%	CISCO SYSTEMS	CSCO.O
22%	COMCAST A	CMCSA.O
22%	DEERE	DE
22%	GENERAL MOTORS	GM
22%	JOHNSON CONTROLS	JCI
22%	SIMON PROPERTY GR	SPG
17%	AMAZON.COM	AMZN.O
17%	AMERICAN INTL.GP.	AIG
17%	CONSTELLATION BRAN	STZ
17%	DUKE ENERGY	DUK
17%	EXELON	EXC.O
17%	HOME DEPOT	HD
17%	INTERNATIONAL BU	IBM
17%	PUBLIC STORAGE	PSA
17%	WILLIAMS	WMB
11%	DOLLAR GENERAL	DG
11%	ECOLAB	ECL
11%	KINDER MORGAN	KMI
11%	NORTHROP GRUMMAN	NOC
11%	STRYKER	SYK
6%	AMERICAN TOWER	AMT
6%	REGENCY CENTERS	REG.O
0%	BOEING	BA
0%	EBAY	EBAY.O
0%	INTUIT	INTU.O
0%	NA	BBT
0%	PUB.SER.ENTER.GP.	PEG
0%	WASTE MANAGEMENT	WM
0%	WELLTOWER	WELL.K
0%	YUM! BRANDS	YUM

Stocks marked blue are the Dow Jones 30 Index constituents

S&P 200 stocks – listed alphabetically (A-HP)

SCORE	COMPANY	RIC	PRICE	LT	MT	ST
89%	3M	MMM	171.47	do	+	+
89%	ABBOTT LABORATORIES	ABT	85.48	o	+	+
83%	ABBVIE	ABBV.K	86.98	+	+	dd-
94%	ACCENTURE CLASS A	ACN	202.55	+	+	+
83%	ACTIVISION BLIZZARD	ATVI.O	55.21	+	o	+
94%	ADOBE (NAS)	ADBE.O	306.23	+	+	+
83%	ADVANCED MICRO DEVICES	AMD.O	39.63	+	+	u+
28%	AFLAC	AFL	52.99	do	do	dd-
83%	AIR PRDS.& CHEMS.	APD	232.03	+	+	d-
89%	ALEXION PHARMS.	ALXN.O	113.89	+	+	+
94%	ALLERGAN	AGN	186.37	+	+	+
28%	ALLIANCE DATA SYSTEMS	ADS	105.26	-	o	+
94%	ALLSTATE ORD SHS	ALL	111.10	+	+	do
100%	ALPHABET 'C'	GOOG.O	1'340.62	+	+	u+
94%	ALTRIA GROUP	MO	50.41	+	+	+
17%	AMAZON.COM	AMZN.O	1'751.60	d-	do	dd-
72%	AMER.ELEC.PWR.	AEP	92.39	o	uo	+
78%	AMERICAN EXPRESS	AXP	120.61	o	+	u+
17%	AMERICAN INTL.GP.	AIG	51.86	o	-	uo
6%	AMERICAN TOWER	AMT	212.20	-	-	do
94%	AMGEN	AMGN.O	233.77	+	+	+
100%	AMPHENOL 'A'	APH	104.03	+	+	+
100%	ANALOG DEVICES	ADI.O	115.89	+	+	u+
72%	ANTHEM	ANTM.K	285.27	+	+	d-
89%	AON CLASS A	AON	205.99	+	+	+
100%	APPLE	AAPL.O	270.71	+	+	+
50%	APPLIED MATS.	AMAT.O	56.60	+	do	d-
61%	AT&T	T	38.20	+	uo	uu+
94%	AUTODESK	ADSK.O	179.32	+	+	+
83%	AUTOMATIC DATA PRODUCTS	ADP.O	169.98	do	+	do
100%	BANK OF AMERICA	BAC	33.67	+	+	+
100%	BANK OF NEW YORK MELLON	BK	49.64	+	+	u+
67%	BAXTER INTL.	BAX	83.17	o	u+	+
0%	NA	BBT	NA	dd-	dd-	dd-
100%	BECTON DICKINSON	BDX	260.69	+	+	+
100%	BERKSHIRE HATHAWAY	BRKb	222.61	+	+	+
100%	BIOGEN	BIIB.O	300.26	+	+	+
100%	BLACKROCK	BLK	495.76	+	+	+
0%	BOEING	BA	354.09	d-	dd-	d-
39%	BOOKING HOLDINGS	BKNG.O	1'930.27	o	-	+
89%	BOSTON SCIENTIFIC	BSX	44.08	u+	+	+
100%	BRISTOL MYERS SQUIBB	BMJ	59.95	+	+	uu+
100%	BROADCOM	AVGO.O	316.05	+	+	u+
89%	CAMECO (NYS)	CCJ	9.77	u+	u+	uu+
72%	CATERPILLAR	CAT	142.72	+	+	o
72%	CELGENE DEAD - DELIVERABLE	CELG.O	108.24	+	do	uo
94%	CHARLES SCHWAB	SCHW.K	48.95	+	+	+
50%	CHARTER COMMS.CL.A	CHTR.O	467.85	+	do	-
44%	CHEVRON	CVX	118.01	d-	o	uu+
44%	CHUBB	CB	152.20	o	o	u+

SCORE	COMPANY	RIC	PRICE	LT	MT	ST
89%	CIGNA	CI	198.93	+	+	do
22%	CISCO SYSTEMS	CSCO.O	43.84	-	o	o
100%	CITIGROUP	C	75.81	+	+	+
39%	CME GROUP	CME.O	205.96	uo	uo	o
72%	COCA COLA	KO	54.42	o	u+	+
83%	COGNIZANT TECH.SLT	CTSH.O	62.66	+	+	dd-
33%	COLGATE-PALM.	CL	68.24	d-	o	+
22%	COMCAST A	CMCSA.O	44.24	o	-	uu+
100%	CONOCOPHILLIPS	COP	61.97	+	+	u+
17%	CONSTELLATION BRAND	STZ	183.65	o	-	do
33%	COSTCO WHOLESALE	COST.O	294.95	+	d-	-
28%	CROWN CASTLE INTL.	CCI	135.46	-	uo	+
56%	CSX	CSX.O	71.27	o	+	+
94%	CVS HEALTH	CVS	75.36	+	+	+
94%	DANAHER	DHR	148.22	+	+	+
22%	DEERE	DE	165.21	do	-	-
50%	DELTA AIR LINES	DAL	56.14	do	do	do
11%	DOLLAR GENERAL	DG	154.72	do	-	-
33%	DOMINION ENERGY	D	81.00	+	dd-	dd-
100%	DOVER	DOV	112.59	+	+	+
78%	DOW CHEMICAL	DOW	53.22	+	+	uo
17%	DUKE ENERGY	DUK	89.76	-	-	+
100%	EATON	ETN	93.08	+	+	+
0%	EBAY	EBAY.O	34.86	d-	-	dd-
11%	ECOLAB	ECL	186.41	-	-	u+
50%	EDWARDS LIFESCIENCES	EW	238.98	+	do	dd-
100%	APPLIED ELECTRONIC ARTS	EA.O	103.23	+	+	+
89%	ELI LILLY	LLY	119.64	u+	+	+
100%	EMERSON ELECTRIC	EMR	75.09	+	+	u+
78%	EOG RES.	EOG	73.96	uo	u+	uu+
56%	EQUINIX REIT	EQIX.O	559.19	+	o	do
94%	ESTEE LAUDER COS.A	EL	197.92	+	+	+
17%	EXELON	EXC.O	44.86	-	-	u+
67%	EXXON MOBIL	XOM	69.51	-	u+	u+
94%	FACEBOOK CLASS A	FB.O	201.05	+	+	+
61%	FEDEX	FDX	156.61	+	+	do
94%	FIDELITY NAT.INFO.SV	FIS	138.58	+	+	+
89%	FISERV	FISV.O	114.49	+	+	do
89%	FORD MOTOR	F	9.02	o	+	+
78%	FORTIVE	FTV	72.87	o	+	u+
83%	GENERAL DYNAMICS	GD	183.55	+	o	uu+
83%	GENERAL ELECTRIC	GE	11.10	+	+	-
83%	GENERAL MILLS	GIS	53.31	o	+	do
22%	GENERAL MOTORS	GM	35.54	-	o	o
100%	GILEAD SCIENCES	GILD.O	67.08	+	+	+
100%	GOLDMAN SACHS GROUP	GS	224.61	+	+	+
89%	HCA HEALTHCARE	HCA	144.61	+	+	u+
17%	HOME DEPOT	HD	214.28	do	-	uo
72%	HONEYWELL INTL.	HON	175.46	+	+	uo
100%	HP	HPQ	20.50	+	+	+

S&P 200 stocks – listed alphabetically (Humana-Z)

SCORE	COMPANY	RIC	PRICE	LT	MT	ST
94%	HUMANA	HUM	348.14	+	+	+
100%	ILLINOIS TOOL WORKS	ITW	174.19	+	+	u+
94%	ILLUMINA	ILMN.O	326.47	+	+	+
67%	INTEL	INTC.O	56.81	+	+	d-
72%	INTERCONTINENTAL E	ICE	93.80	+	do	do
17%	INTERNATIONAL BU	IBM	133.22	o	d-	do
0%	INTUIT	INTU.O	256.18	-	-	-
94%	INTUITIVE SURGICAL	ISRG.O	585.57	+	+	+
67%	IQVIA HOLDINGS	IQV	148.49	-	u+	+
83%	JOHNSON & JOHNSO	JNJ	140.38	u+	+	+
22%	JOHNSON CONTROLS	JCI	42.09	+	d-	dd-
100%	JP MORGAN CHASE &	JPM	135.04	+	+	+
100%	KIMBERLY-CLARK	KMB	136.98	+	+	u+
11%	KINDER MORGAN	KMI	19.75	-	-	uu+
94%	KRAFT HEINZ	KHC.O	31.09	+	+	uu+
78%	LAM RESEARCH	LRCX.O	269.86	+	+	uu+
94%	LINDE	LIN	205.53	+	+	o
67%	LOCKHEED MARTIN	LMT	386.86	+	o	d-
72%	LOWE'S COMPANIES	LOW	116.28	+	do	do
56%	LYONDELLBASELL IND	LYB	92.90	+	do	uo
39%	MARATHON PETROLE	MPC	60.20	+	d-	uo
100%	MARRIOTT INTL.'A'	MAR.O	142.29	+	+	+
94%	MARSH & MCLENNAN	MMC	108.25	+	+	+
94%	MASTERCARD	MA	290.40	+	+	+
33%	MCDONALDS	MCD	195.35	-	uo	+
78%	MEDTRONIC	MDT	113.09	+	+	+
89%	MERCK & COMPANY	MRK	88.85	o	+	+
100%	METLIFE	MET	49.50	+	+	+
83%	MICRON TECHNOLOG	MU.O	47.93	+	u+	+
94%	MICROSOFT	MSFT.O	151.75	+	+	+
67%	MONDELEZ INTERNAT	MDLZ.O	53.84	-	uu+	u+
72%	MONSTER BEVERAGE	MNST.O	60.04	o	+	+
100%	MOODY'S	MCO	231.77	+	+	+
100%	MORGAN STANLEY	MS	49.80	+	+	u+
67%	NETFLIX	NFLX.O	307.35	o	+	do
78%	NEXTERA ENERGY	NEE	234.39	+	o	+
100%	NIKE 'B'	NKE	97.00	+	+	+
72%	NORFOLK SOUTHERN	NSC	190.93	+	+	d-
11%	NORTHROP GRUMMAN	NOC	344.76	do	d-	d-
89%	NVIDIA	NVDA.O	212.17	+	+	do
89%	O REILLY AUTOMOTIV	ORLY.O	445.57	+	+	u+
33%	OCCIDENTAL PTL.	OXY	39.01	-	o	u+
78%	ONEOK	OKE	71.59	+	o	+
28%	ORACLE	ORCL.K	54.83	o	do	-
78%	PAYCHEX	PAYX.O	85.13	do	+	do
50%	PAYPAL HOLDINGS	PYPL.O	104.34	d-	+	dd-
83%	PEPSICO	PEP.O	137.36	+	o	+
72%	PFIZER	PFE	38.29	o	+	+
94%	PHILIP MORRIS INTL.	PM	83.25	+	+	uu+
50%	PHILLIPS 66	PSX	113.56	+	do	-

SCORE	COMPANY	RIC	PRICE	LT	MT	ST
100%	PNC FINL.SVS.GP.	PNC	153.81	+	+	+
72%	PROCTER & GAMBLE	PG	124.19	o	o	+
67%	PROGRESSIVE OHIO	PGR	72.98	-	+	+
94%	PROLOGIS REIT	PLD	91.43	+	+	+
56%	PRUDENTIAL FINL.	PRU	92.29	do	+	d-
0%	PUB.SER.ENTER.GP.	PEG	58.61	-	-	d-
17%	PUBLIC STORAGE	PSA	213.85	-	-	u+
56%	QUALCOMM	QCOM.O	83.82	+	o	uo
94%	RAYTHEON 'B'	RTN	217.21	+	+	o
6%	REGENCY CENTERS	REG.O	68.14	-	-	do
94%	REGENERON PHARMS.	REGN.O	372.26	+	+	+
50%	ROPER TECHNOLOGIE	ROP	346.22	dd-	+	dd-
78%	ROSS STORES	ROST.O	113.91	+	+	do
100%	S&P GLOBAL	SPGI.K	274.38	+	+	+
39%	SALESFORCE.COM	CRM	158.01	do	do	d-
100%	SCHLUMBERGER	SLB	36.89	+	+	+
67%	SEMPRA EN.	SRE	145.84	+	do	dd-
78%	SHERWIN-WILLIAMS	SHW	578.54	+	o	u+
22%	SIMON PROPERTY GR	SPG	148.24	-	o	do
72%	SOUTHERN	SO	62.14	+	o	o
50%	SOUTHWEST AIRLINES	LUV	55.94	+	do	d-
67%	STARBUCKS	SBUX.O	86.32	-	u+	+
11%	STRYKER	SYK	203.99	d-	-	do
83%	SYSCO	SY	82.77	+	u+	u+
72%	TARGET	TGT	125.03	+	+	do
61%	TE CONNECTIVITY	TEL	92.15	+	o	+
56%	TEXAS INSTRUMENTS	TXN.O	122.37	u+	uo	+
44%	TRAVELERS COS.	TRV	135.72	-	o	do
78%	TJX	TJX	59.84	+	+	do
100%	TRANSOCEAN	RIG	5.63	u+	+	+
56%	UNION PACIFIC	UNP	172.00	o	+	-
28%	UNITED PARCEL SER.'E	UPS	117.53	+	d-	uo
94%	UNITED TECHNOLOG	UTX	146.99	+	+	u+
94%	UNITEDHEALTH GRO	UNH	280.19	+	+	+
94%	US BANCORP	USB	60.14	+	+	+
100%	V F	VFC	90.42	+	+	+
67%	VALERO ENERGY	VLO	93.61	+	o	-
72%	VERIZON COMMUNIC	VZ	61.19	o	u+	+
94%	VERTEX PHARMS.	VRTX.O	223.25	+	+	+
94%	VISA 'A'	V	182.17	+	+	do
56%	WALGREENS BOOTS	WBA.O	58.63	+	do	-
83%	WALMART	WMT	119.78	+	o	uu+
89%	WALT DISNEY	DIS	147.66	+	+	do
0%	WASTE MANAGEMENT	WM	111.62	-	d-	dd-
100%	WELLS FARGO & CO	WFC	54.37	+	+	+
0%	WELLTOWER	WELL.K	83.77	-	-	dd-
17%	WILLIAMS	WMB	22.39	-	do	dd-
28%	XILINX	XLNX.O	91.86	-	o	+
0%	YUM! BRANDS	YUM	98.77	-	-	dd-
56%	ZOETIS A	ZTS	121.72	o	uo	+

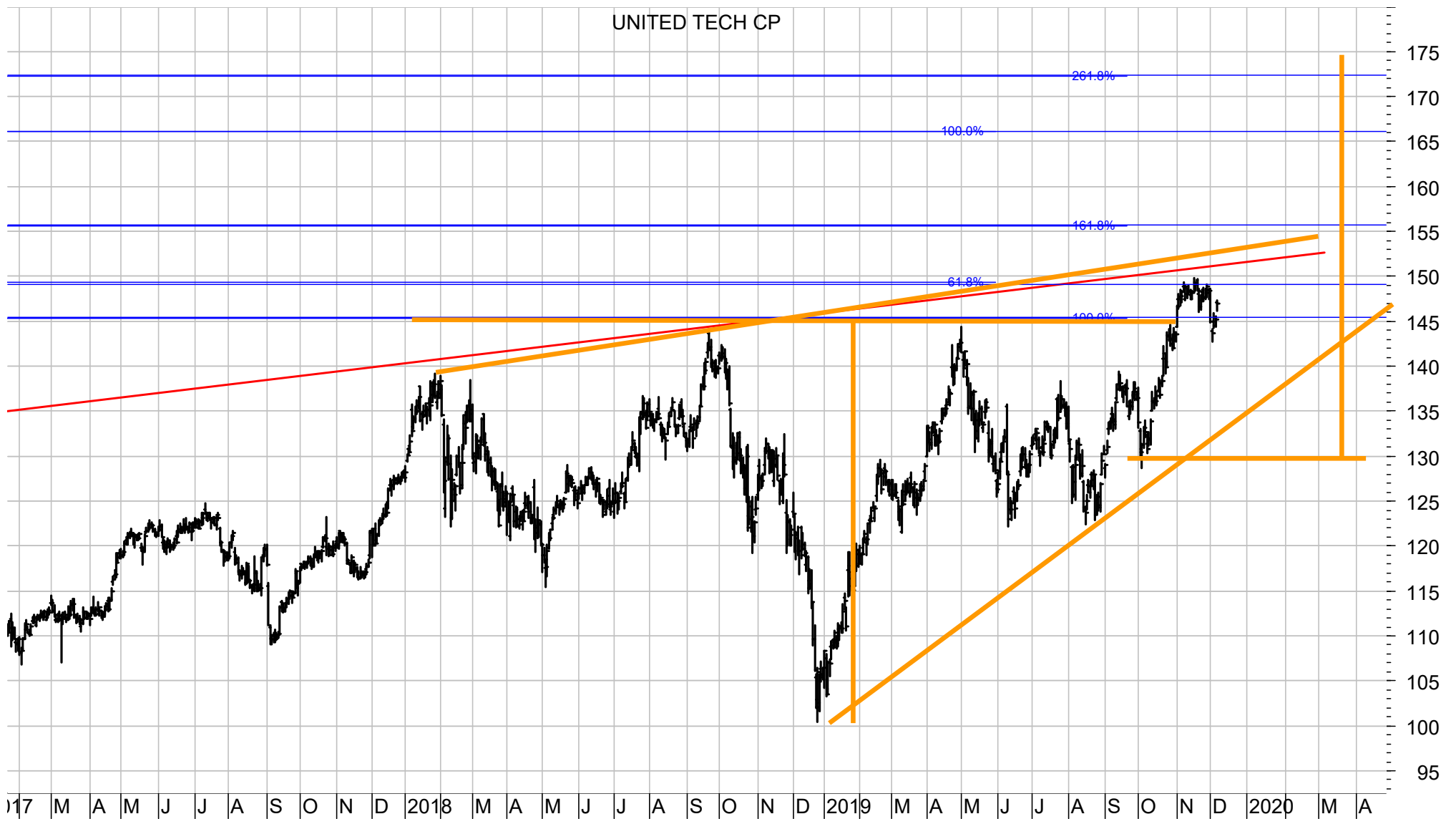
APPLE – daily chart

Apple is likely to extend the uptrend to the mega resistance between 275 and 290.



UNITED TECHNOLOGIES – daily chart

UTX is testing the resistance at 150 / 156, a break of which would signal a big breakout with next resistance at 166 or 173.



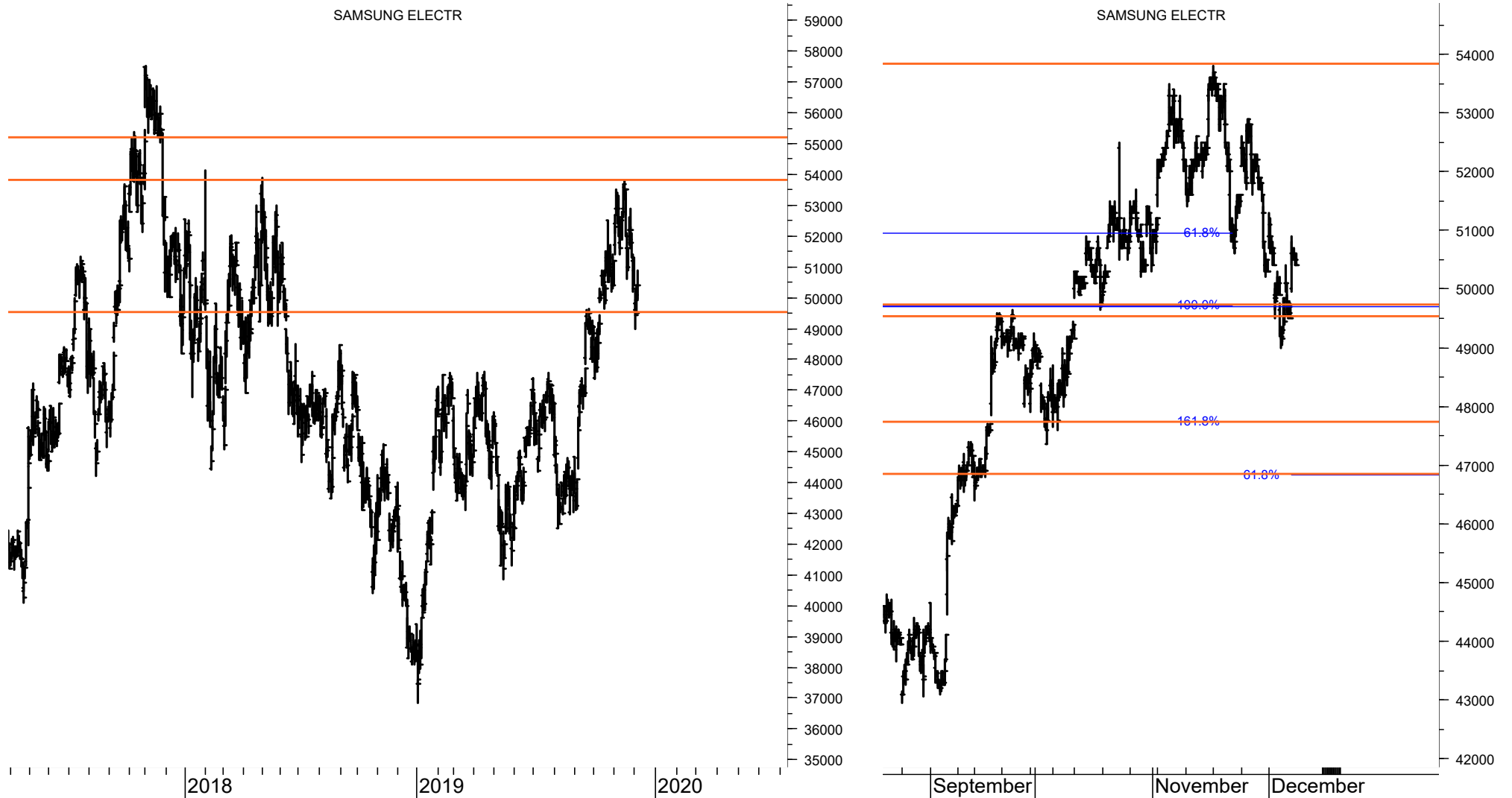
JAPAC 100 stocks – listed according to the Score (range from 100% to 0%, 40%-60% is neutral)

SCORE	COMPANY	RIC	PRICE	LT	MT	ST
100%	ALIBABA GRP AD/d	BABA.K	200.00	+	+	+
100%	AMOREPACIFIC/d	090430.KS	188'500.00	+	+	+
100%	CANON INC/d	7751.T	3'070.00	+	+	+
100%	HONDA MOTOR/d	7267.T	3'144.00	+	+	uu+
100%	INDAH KIAT PUL/d	INKP.JK	7'950.00	uu+	u+	uu+
100%	KAO CORPORATIO/d	4452.T	8'696.00	+	+	+
100%	KOREA ELEC POW/d	015760.KS	28'850.00	+	+	+
100%	LG HOUSEHOLD/d	051900.KS	1'267'000	+	+	+
100%	MITSUBISHI COR/d	8058.T	2'922.00	+	+	+
100%	SAMSUNG BIOLOG/d	207940.KS	395'000.00	+	+	uu+
100%	SAMSUNG EL-MEC/d	009150.KS	115'500.00	+	u+	+
100%	SONY CORP/d	6758.T	7'088.00	+	+	+
100%	TAIWAN SEMICON/d	2330.TW	313.00	+	+	uu+
94%	BHARTI AIRTEL/d	BRTI.NS	447.35	+	+	+
94%	JAPAN TOBACCO/d	2914.T	2'500.50	+	+	+
94%	KB FGI/d	105560.KS	47'000.00	+	+	+
94%	KIA MOTORS/d	000270.KS	43'800.00	+	+	uu+
94%	LG CORP/d	003550.KS	70'800.00	u+	+	uu+
94%	NTT/d	9432.T	5'589.00	+	+	+
94%	POSCO/d	005490.KS	230'500.00	+	+	+
94%	RECRUIT HOLDIN/d	6098.T	3'980.00	+	+	+
94%	SMFG/d	8316.T	3'994.00	+	+	o
89%	INDOCEMENT T P/d	INTP.JK	20'700.00	uo	u+	uu+
89%	KDDI/d	9433.T	3'160.00	+	+	uo
89%	LG DISPLAY/d	034220.KS	14'700.00	+	+	+
89%	RELIANCE/d	RELI.NS	1'554.90	+	+	do
89%	TENCENT/d	0700.HK	335.60	u+	+	+
89%	WOONGJIN COWAY/d	021240.KS	92'800.00	+	+	uo
83%	CHAROEN POKPHA/d	CPIN.JK	6'900.00	+	+	uu+
83%	DB INSURANCE/d	005830.KS	55'900.00	+	+	+
83%	E-MART/d	139480.KS	126'000.00	+	+	dd-
83%	FANUC LTD/d	6954.T	21'090.00	+	o	+
83%	HANA FINANCIAL/d	086790.KS	35'800.00	+	+	-
83%	KAKAO/d	035720.KS	153'500.00	+	+	d-
83%	LG ELECTRONICS/d	066570.KS	70'200.00	+	+	d-
83%	MITSUB UFJ FG/d	8306.T	584.70	+	+	uu+
83%	MIZUHO FINANCI/d	8411.T	170.10	+	o	uu+
83%	SAMSUNG C&T/d	028260.KS	101'000.00	+	+	-
83%	SHINHAN FINANC/d	055550.KS	43'750.00	+	+	-
83%	TAKEDA PHARM/d	4502.T	4'385.00	+	+	d-
78%	ASTRA INTL TBK/d	ASII.JK	6'775.00	uo	u+	u+
78%	BANK BNI TBK/d	BBNI.JK	7'450.00	uo	+	u+
78%	BANK MANDIRI T/d	BMRI.JK	7'175.00	uo	+	u+
78%	JAPAN POST HLD/d	6178.T	1'046.00	o	+	+
78%	NAVER/d	035420.KS	174'000.00	+	+	+
78%	TOYOTA MOTOR C/d	7203.T	7'727.00	+	u+	uo
72%	BANK RAKYAT IN/d	BBRI.JK	4'170.00	uo	u+	u+
72%	LG UPLUS/d	032640.KS	13'850.00	uo	uo	uu+
72%	NCSOFT/d	036570.KS	539'000.00	uu+	uu+	uu+
72%	NTT DOCOMO/d	9437.T	3'000.00	+	+	o

SCORE	COMPANY	RIC	PRICE	LT	MT	ST
67%	HANKOOK TIR TE/d	161390.KS	33'100.00	+	+	-
67%	HYUNDAI MOBIS/d	012330.KS	246'500.00	+	uo	-
67%	SAMSUNG FIRE I/d	000810.KS	234'500.00	o	+	o
67%	SK HOLDINGS/d	034730.KS	257'000.00	+	+	-
67%	SOFTBANK GROUP/d	9984.T	4'257.00	-	+	u+
61%	SAMSUNG ELEC-I/d	005935.KS	41'750.00	+	uo	uu+
61%	SAMSUNG LIFE/d	032830.KS	72'300.00	o	u+	uo
56%	KOREA SHIPBUIL/d	009540.KS	121'500.00	u+	uo	+
50%	GUDANG GARAM T/d	GGRM.JK	52'800.00	-	uu+	uu+
50%	H M SAMPOERNA/d	HMSP.JK	2'080.00	-	uu+	uu+
50%	HYUNDAI HEAVY /d	267250.KS	341'000.00	+	d-	+
50%	TATA CONSULT/d	TCS.NS	2'123.60	-	uu+	uu+
44%	BANK OF CHINA/d	3988.HK	3.1500	o	o	o
44%	HANMI PHARM/d	128940.KS	324'000.00	o	+	d-
44%	KALBE FARMA TB/d	KLBF.JK	1'570.00	uo	uo	+
44%	SEMEN INDONESIA/d	SMGR.JK	12'425.00	uo	uo	uu+
39%	SAMSUNG ELECTR/d	005930.KS	50'400.00	+	-	uo
39%	SHIN-ETSU CHEM/d	4063.T	11'760.00	+	-	o
39%	SK HYNIX/d	000660.KS	80'600.00	+	-	uo
33%	INFOSYS LTD/d	INFY.NS	715.10	-	uo	uu+
33%	TELKOM INDONESIA/d	TLKM.JK	4'100.00	-	uo	u+
22%	GS HOLDINGS/d	078930.KS	49'100.00	o	-	uu+
22%	NISSAN MOTOR C/d	7201.T	675.10	-	o	o
22%	UNITED TRACTOR/d	UNTR.JK	21'325.00	-	o	uo
17%	LOTTE SHOPPING/d	023530.KS	127'000.00	d-	do	dd-
17%	MIRAE ASSET DW/d	006800.KS	7'240.00	o	d-	uo
17%	SAMSUNG HEAVY/d	010140.KS	6'930.00	-	-	+
17%	SAMSUNG SDS/d	018260.KS	192'000.00	-	o	-
17%	SK TELECOM/d	017670.KS	238'500.00	d-	do	dd-
11%	CELLTRION HEAL/d	091990.KQ	47'050.00	o	-	d-
11%	CELLTRION/d	068270.KS	170'000.00	do	d-	d-
11%	CENTRAL JAPAN /d	9022.T	21'995.00	o	-	-
11%	HANON SYSTEMS/d	018880.KS	11'000.00	-	-	u+
11%	HYUNDAI MOTOR/d	005380.KS	118'500.00	o	-	-
11%	IBK/d	024110.KS	11'900.00	-	-	uu+
11%	UNILEVER INDON/d	UNVR.JK	42'250.00	-	-	u+
6%	CNOOC/d	0883.HK	11.30	-	d-	uo
6%	KOREA ZINC/d	010130.KS	407'000.00	-	-	uo
6%	NETMARBLE/d	251270.KS	87'900.00	-	-	o
6%	S-OIL/d	010950.KS	88'400.00	d-	-	uo
0%	FAST RETAILING/d	9983.T	63'920.00	d-	dd-	d-
0%	HYUNDAI ENG&CO/d	000720.KS	40'700.00	-	-	-
0%	HYUNDAI GLOVIS/d	086280.KS	145'500.00	d-	-	d-
0%	HYUNDAI STEEL/d	004020.KS	30'450.00	-	-	d-
0%	KANGWON LAND/d	035250.KS	29'350.00	-	-	-
0%	KT G/d	033780.KS	95'200.00	-	-	d-
0%	LG CHEM/d	051910.KS	293'500.00	-	d-	-
0%	LOTTE CHEMICAL/d	011170.KS	211'500.00	-	-	-
0%	SAMSUNG SDI/d	006400.KS	225'500.00	-	d-	-
0%	SK INNOVATION/d	096770.KS	141'500.00	-	-	-

SAMSUNG ELECTRONICS - daily chart (left) and hourly chart (right)

Samsung has corrected to the major support cluster around 49.5k, a break of which would signal 47.8k / 46.9k.



Disclaimer

Copyright © 2018 and 2019; FinChartOutlook GmbH, Rolf Bertschi, all rights reserved.

This Publication is designed for sophisticated money managers who are aware of the risk in securities investments and market forecasting. The analysis herein is based both on technical and cyclic readings and the recommendations represent the opinion of the Publisher, FinChartOutlook GmbH. Past performance does not imply or guarantee profitable results in the future. Before making specific investments, further investigation is recommended. Although the information contained in this Publication has been derived from sources which are believed to be reliable, they are not always necessarily complete and cannot be guaranteed. Neither the Publisher, FinChartOutlook GmbH, nor any of its employees, affiliates or subsidiaries shall have any liability for any loss, harm or other detriment which has been sustained by any natural person or entity that has relied on the information contained in this Publication. Any person or entity who does rely on any information contained in this Publication does so at his/her own risk and by doing so assumes all liability for any such loss, harm or other detriment. Employees of the Publisher may at times have positions in the securities referred to in this Publication and may make purchases or sales of these securities while the Publication is in circulation. An advisor / client relationship is not created by the distribution or delivery of this publication.

The information published and opinions expressed are provided by FinChartOutlook GmbH for personal use and for informational purposes only. The information is not intended to provide specific financial, investment, tax, legal or accounting advice for you, and is not intended to be relied upon in that regards. You should not act or rely on the information without professional assistance. Non information published in this Publication constitutes an offer or recommendation, to buy or sell any investment instruments, to effect any transactions, or to conclude any legal act of any kind whatsoever. FinChartOutlook GmbH disclaims, without intention, all liability for any loss or damage of any kind, including any direct, indirect or consequential damages, which might be incurred through the use of any information in this presentation. The entire content of this paper is subject to copyright with all rights reserved. You may save or print out a hard copy, provided that you do not remove any copyright or other proprietary notices. All property rights shall remain with FinChartOutlook GmbH. The content of this Publication may not be reproduced (in whole or in part), transmitted (by electronic means or otherwise), modified, linked into or used for any public or commercial purpose without the prior written permission of Rolf P. Bertschi, FinChartOutlook GmbH.

Sources

The charts in this publication are from Metastock and Datastream from Thomson Reuters Equis. All indicators and analyses are by Rolf Bertschi.

Explanations

For a more detailed explanation of the Trend and Momentum Models applied in this Chart Outlook, please see

www.chartoutlook.com

www.rolfbertschi.ch

E-Mail

rolf.bertschi@chartoutlook.ch

FinChartOutlook GmbH, Rolf P. Bertschi, Dörflistrasse 17, 8903 Birmensdorf ZH, Switzerland